



FURMAN WOMEN'S LACROSSE

2026 GAME NOTES

ATHLETIC COMMUNICATIONS: 3300 Poinsett Highway | Timmons Arena | Greenville, S.C. | WLAX Contact: Wesley Herring (wesley.herring@furman.edu)

2026 SCHEDULE/RESULTS

FEBRUARY

10	at #9 Clemson (ACCNX)	6:00 p.m.
20	Austin Peay (ESPN+)	6:00 p.m.
25	at Queens (N.C.)	6:00 p.m.

MARCH

2	Campbell	6:00 p.m.
4	St. Bonaventure	5:00 p.m.
6	at Old Dominion	7:00 p.m.
12	UMass Lowell (ESPN+)	6:00 p.m.
15	Quinnipiac	12:00 p.m.
17	Manhattan (ESPN+)	6:00 p.m.
25	at Presbyterian*	7:00 p.m.
28	Radford*	2:00 p.m.

APRIL

1	Wofford* (ESPN+)	7:00 p.m.
4	at Longwood*	1:00 p.m.
8	Mercer* (ESPN+)	7:00 p.m.
11	High Point* (ESPN+)	2:00 p.m.
18	at Winthrop*	1:00 p.m.
25	at Gardner-Webb*	1:00 p.m.
28	Big South First Round ¹	TBA

MAY

1	Big South Semifinals ²	TBA
3	Big South Finals ²	TBA

All Game Times Are EST and Subject to Change

* - Big South Conference Game

1 - at Higher Seeds

2 - at No. 1 seed



BIG SOUTH STANDINGS

	Big South			Overall		
	W	L	Pct.	W	L	Pct.
Furman	0	0	.000	0	0	.000
Presbyterian	0	0	.000	0	0	.000
Radford	0	0	.000	0	0	.000
Winthrop	0	0	.000	0	0	.000
Gardner-Webb	0	0	.000	0	1	.000
High Point	0	0	.000	0	1	.000
Longwood	0	0	.000	0	1	.000
Mercer	0	0	.000	0	1	.000
Wofford	0	0	.000	0	1	.000



FURMAN
PALADINS

Record: 0-0

Head Coach: Gail Wallach
Career: 121-47 (11th season)
Furman: 14-4 (2nd season)

VS



#9 CLEMSON
TIGERS

Record: 1-0

Head Coach: Allison Kwolek
Career: 103-36 (14th season)
CU: 38-20 (4th season)

GAME INFORMATION

Date:	Tuesday, February 10, 2025 // 6:00 p.m.
Location:	Clemson, S.C.
Stadium:	Clemson Lacrosse Complex
Series vs. Clemson:	Clemson leads 2-0
In Greenville:	Clemson leads 1-0
In Clemson:	Clemson leads 1-0
Last Meeting:	Clemson won 11-5 (2024)
First Meeting:	Clemson won 19-3 (2023)
Longest FUR Win Streak:	N/A
Website:	www.furmanpaladins.com

SETTING THE SCENE

OPENING DRAW

- Furman opens up the 2026 season on Tuesday evening when it travels to Clemson to face the Tigers at 6 p.m.
- The previous two matchups have been the Paladins' season openers with the Tigers having won both contests. The teams last met in 2024 when Clemson won by an 11-5 score in Greenville.
- Furman was picked third in the Big South Preseason Coaches Poll with Lily Toole and Skylar Hilmer both earning preseason All-Big South honors.
- The Paladins won a school record 14 games in 2025 and clinched a share of the program's first-ever Big South Regular Season Championship.
- Furman is under the direction of second-year head coach Gail Wallach.

RETURNING STATISTICAL LEADERS



POINTS

85

LILY TOOLE



GOALS

64

LILY TOOLE



ASSISTS

21

LILY TOOLE



GROUND
BALLS

25

LILLY DYER



DRAWS

78

SKYLAR HILMER



CAUSED
TURNOVERS

9

SKYLAR HILMER



SAVES

72

MADIGAN BREWER

STATS COMPARISON (CLEM 2026; FUR 2025)



566	299	148	.528	10.90	270	308	36-68	.821	248	131
SHOTS	GOALS	ASSISTS	SHOT %	GAA	GB	DRAWS	FPG-FPA	CLEARs	TO	CT
33	20	14	.606	5.00	10	15	1-1	1.000	10	9

ALL ABOUT FURMAN...

• Among America's Best Colleges; **U.S. NEWS AND WORLD REPORT** ranks Furman University the No. 1 college in South Carolina, Top 5 in the Southeast, and 51st nationally. **FORBES** recognizes Furman 21st on its list of "Top 25 Colleges in the South." Furman consistently appears among the nation's elite for campus beauty, including a recent No. 9 ranking on the **TIMES HIGHER EDUCATION** list of "Ten Most Beautiful Universities in the U.S."

DID YOU KNOW...

• Among Furman's most notable graduates are **CHARLES TOWNES**, Nobel Prize-winning inventor of the laser; **JOHN WATSON**, the "father of behavioral psychology"; **KEITH LOCKHART**, conductor of the Boston Pops; **ALEXANDER STUBB**, former prime minister of Finland; **RICHARD RILEY**, former governor of South Carolina and U.S. Department of Education Secretary; **MIKE MCCONNELL**, former vice admiral, Director of the National Security Agency, and Director of National Intelligence; **BETSY KING** and **BETH DANIEL**, Ladies Professional Golf Association Hall-of-Famers; **CLINT DEMPSEY**, member of the 2006, '10, & '14 (captain) U.S. World Cup Teams and 2022 National Soccer Hall of Fame inductee; **BRAD FAXON**, nine-time winner on the PGA & Champions Tours; **SAM WYCHE**, former head coach of the NFL's Cincinnati Bengals; **BEAR RINEHART**, lead singer/songwriter of the popular band NeedToBreathe.

2026 QUICK FACTS

GENERAL INFORMATION

School	Furman University
Location	Greenville, S.C.
Enrollment	2,500
Founded	1826
Colors	Purple & White
Nickname	Paladins
Mascot	Knight On A White Horse
Conference (Affiliation)	Big South (NCAA Division I)
Stadium (Capacity)	Paladin Stadium (14,518)
President	Dr. Elizabeth Davis
Faculty Athletics Representative	Dr. Danielle Vinson
Vice President for Intercollegiate Athletics	Jason Donnelly

WOMEN'S LACROSSE INFORMATION

Head Coach	Gail Wallach
Overall Record	121-47 (11th season)
Record at Furman	14-4 (2nd season)
Assistant Coach	Sarah Farley (Alabama-Huntsville, 2022)
Assistant Coach	Sydney McClure (Coastal Carolina, 2024)
2026 Record	0-0
2026 Big South Conference Record	0-0
Letterwinners Returning/Lost	24/8
Starters Returning/Lost	7/5
Newcomers	18

ATHLETIC COMMUNICATIONS

Director of Athletic Communications/WLAX Contact	Wesley Herring
Email	Wesley.Herring@Furman.edu
Office Phone	(864) 294-3062
Cell	(843) 845-2817
Twitter	@WHerring_SID

ORIGIN OF THE PALADIN

Furman University athletic teams were known by different names until the 1961 school year. The baseball team was "Hornets," the football team "Hurricane," and the basketball team "Paladins."

The basketball team was dubbed "Paladins" by a Greenville sportswriter in the 1930s. By vote of the student body, all Furman athletic teams became the "Paladins" on September 15, 1961. A Paladin is a knight on a horse and the recognized mascot of Furman University's athletic teams.

LAST TIME OUT

- Furman saw its 2025 season end in the semifinals of the Big South Women's Lacrosse Championship, falling to High Point, 18-14, at Mercer's Five Star Stadium in Macon, Ga.
- Former Paladin Paige Harman, who became the program's single-season points leader in the contest, led Furman with six points on two goals and four assists.
- Lily Toole provided five points on three goals and two assists while Marin Hodor scored a career high three goals.
- Former Paladins Sofija Buzelis (two goals, one assist), who had a team high seven draws, and Anna Roser (three goals) both finished with three points.
- Former Furman player Andrea Fisher tied her career high of five ground balls and was one of three players to have one caused turnover.
- In goal, Madigan Brewer totaled nine saves.
- The Paladins concluded the contest with 29 shots, 15 draws, and 12 ground balls.

THE SERIES

SCOUTING THE TIGERS

- Clemson finished last season with a 14-7 overall record and went 6-3 in the ACC.
- The Tigers entered the 2026 season ranked 9th by USA Lacrosse and 12th by the IWFLCA.
- Natalie Shurtleff and Paris Masaracchia were both named preseason All-Americans by USA Lacrosse. Shurtleff earned second team honors while Masaracchia garnered honorable mention accolades.
- Clemson is picked fifth in the ACC Preseason Coaches Poll with Shurtleff and Kayla MacLeod earning preseason All-ACC honors.
- The Tigers opened their season last Saturday leading wire-to-wire for a 20-5 victory over Vanderbilt in Clemson.
- Brooke Goldstein paced Clemson with five goals, two assists and two ground balls, while Mikaela Mooney added three goals, an assist and a ground ball.
- Aubrie Eisfeld recorded a hat trick and Alexa Spallina posted two goals and five assists, tying the program's single-game assists record.
- As a team, Clemson tied the program's second-most assists in a game (14) and fifth-most points in a game (34).
- The Tigers are under the direction of fourth-year head coach Allison Kwolek.

ALL-TIME SERIES

- Furman and Clemson are meeting for the third time in program history.
- The Tigers have won each of the previous two matchups in the series.
- In the last meeting, Clemson picked up an 11-5 win over the Paladins in the 2024 season opener at Paladin Stadium.
- The first-ever meeting in 2023 saw the Tigers defeat Furman by a 19-3 score.
- Tuesday's contest marks the second meeting in Clemson and first at the Clemson Lacrosse Complex. The 2023 meeting was played at Historic Riggs Field.

A LOOK BACK

- Furman opened the 2024 season with an 11-5 loss to then-No. 24 ranked Clemson at Paladin Stadium.
- The Paladins held a 19-17 advantage over the Tigers in ground balls while forcing 21 turnovers and attempting 18 shots.
- Former Paladin Anna Roser paced the Furman offense with two goals, while Reynolds Hester and former Paladins Paige Harman and Sofija Buzelis each had one.
- Former Furman players Sophie Shaw and Casey Richbourg both dished out one assist and Shaw led the team with four draws.
- Former Paladin Katelyn Sousa picked up four ground balls while four different players caused two turnovers apiece.
- Former goalie Lily Rathbun registered five saves and tied Sousa with four ground balls.

2026 FURMAN WOMEN'S LACROSSE NOTES

- Claire Bockstie had a game high four points for the Tigers after being one of four players that scored twice and led the team with two assists.
- Kayla Macleod contributed three points on two goals and an assist.
- Clemson goalie Emily Lamparter totaled eight saves and two ground balls.

NOTING THE PALADINS

A WIN WOULD...

- Be head coach Gail Wallach's 122nd career win.
- Be Wallach's 15th win at Furman.

KEY MILESTONES TO WATCH

- There are several career milestones to watch for this season.

Sailor Henderson

- Currently ranks fifth all-time with 87 saves. She is 77 away from surpassing Meghan Deehan (2020-21) for fourth place. Maggie Friel (2015-18) is the program's all-time saves leader with 416.
- Henderson is fifth all-time at Furman with a .339 save percentage. Lily Rathbun (2022-24) ranks fourth at .359. Courtney Baker (2016-19) is the all-time leader at .443.
- She ranks fifth all-time with a 13.09 goals against average. Meghan Deehan (2020-21) is fourth in front of Henderson with a 11.50 GAA. Teammate Madigan Brewer is the current leader at 9.83.

Madigan Brewer

- Brewer presently is the all-time leader at Furman in goals against average at 9.83.
- She ranks fifth all-time with 11 victories in goal. Meghan Deehan (2020-21) is fourth with 15 wins. Maggie Friel (2015-18) is the all-time leader at 32.

FURMAN IN SEASON OPENERS

- The Paladins are playing in their 12th season opener in program history.
- Furman is 3-8 in season openers.
- The Paladins started the 2025 season with an 11-9 victory over Old Dominion at Paladin Stadium.
- Furman is aiming for its first season-opening road win since its first game in program history, a 14-4 triumph at Presbyterian on February 18, 2015.

FURMAN PICKED THIRD IN BIG SOUTH PRESEASON POLL

- The Paladins were picked to finish third by the league's head coaches in the Big South Preseason Poll.
- It is the third consecutive season that Furman has been projected to place third in the conference's preseason poll.
- The Paladins received a total of 62 points in the preseason poll for the third-place projection.
- Mercer is favored to win the Big South in 2026 followed by High Point.
- Wofford and Winthrop follow Furman in the standings in fourth and fifth places.
- A total of one point separates Gardner-Webb (and Radford in sixth and seventh places.
- Presbyterian and Longwood round out the preseason poll.

HILMER, TOOLE NAMED PRESEASON ALL-BIG SOUTH

- Skylar Hilmer and Lily Toole were both named preseason All-Big South.
- Both earn the first preseason accolade of their careers.
- Hilmer was a second team All-Big South pick in 2025 while Toole garnered Big South Freshman of the Year and second team All-Big South accolades.

2026 RECORD WHEN...

Home	0-0
Away	0-0
Neutral	0-0
Overtime	0-0
vs. Non-Big South Opponent	0-0
vs. Big South Opponent	0-0
vs. Ranked Opponent	0-0
vs. Unranked Opponent	0-0
Scoring First	0-0
Opponent Scores First	0-0
Leading at Half	0-0
Trailing at Half	0-0
Tied at Half	0-0
One-Goal Differential	0-0
Two-Goal Differential	0-0
Three+ Goal Differential	0-0
Outshooting Opponent	0-0
Outshot by Opponent	0-0
Taking 21-30 Shots	0-0
Taking >30 Shots	0-0
Allowing <20 Shots	0-0
Allowing 21-30 Shots	0-0
Allowing >30 Shots	0-0
Following a Win	0-0
Following a Loss	0-0

LAST TIME THE PALADINS...

Won in Overtime	at Mercer (18-17 OT), 4/23/25
Lost in Overtime	Mercer (15-14 OT), 5/4/19
Won Five+ Games in a Row	6: 4/12/25 to 4/29/25
Lost Three+ Games in a Row	5: 2/21/24 to 3/12/24
Scored 20 Goals	Winthrop (22-9), 4/26/25
Allowed 20 Goals	at #11 Florida (7-23), 3/19/24
Shutout an Opponent	Howard (22-0), 4/20/19
Beat a Ranked Team	Never Happened
Beat a Top-10 Team	Never Happened
Beat the No. 1 Ranked Team	Never Happened
Recorded Three Hat Tricks in a Game	Sofija Buzelis (5), Paige Harman (4), Anna Roser (4), Gardner-Webb, 4/29/25
Recorded Four Hat Tricks in a Game	Anna Roser (5), Lily Toole (5), Sofija Buzelis (3), Skylar Hilmer (3), Winthrop, 4/26/25
Recorded Five Hat Tricks in a Game	Anna Roser (7), Hannah Dintino (4), Paige Harman (4), Sophia Buzelis (3), Sophie Shaw (3), Radford, 4/24/24
Opponent Recorded Three Hat Tricks	at Mercer, 4/23/25
Opponent Recorded Four Hat Tricks	vs. High Point, 5/3/24
Opponent Recorded Five Hat Tricks	Never Happened
Held Opponent Under Five Goals	at Radford (21-4), 4/19/25
Were Held Under Five Goals	at Clemson (3-19), 2/15/23
Trailed at Half and Won	at Wofford (10-11, 20-18 F), 4/2/25
Led at Half and Lost	vs. High Point (10-9, 14-19 F), 5/3/24

Had A Player...

Record Five Goals	Sofija Buzelis vs. Gardner-Webb, 4/29/25
Record Six+ Goals	Paige Harman (7) at Mercer, 4/23/25
Record Four Assists	Lily Toole vs. Longwood, 4/12/25
Record Five Assists	Paige Harman at Radford, 4/19/25
Record Six+ Assists	Paige Harman (7) vs. Presbyterian, 4/16/25
Record Eight Points	Anna Roser vs. Winthrop, 4/26/25
Record Nine Points	Sofija Buzelis vs. Longwood, 4/12/25
Record 10+ Points	Paige Harman (10) at Radford, 4/19/25

MCCLURE RETURNS TO FURMAN

- Former Furman midfielder Sydney McClure was announced as the program's new assistant coach on December 18, 2025.
- Will work primarily with the Paladin attackers.
- McClure spent the 2025 fall season on the coaching staff at Central Michigan.
- Played at Furman in 2021 under former head coach Rachel Shuck Whitten, helping the Paladins to a then-school record 12 wins and earn the program's second SoCon regular season championship.
- Finished the year fifth on the team with 36 points on 23 goals and 13 assists.
- Transferred to Coastal Carolina and was a four-year letterwinner for the Chanticleers.
- Concluded her career at CCU with 201 points on 120 goals and 81 assists.
- Was a first team All-ASUN selection twice and played on the the 2024 ASUN championship team.

TOOLE LOOKS TO BUILD ON 2025 CAMPAIGN

- Lily Toole turned in not only the best season by a Furman freshman in program history in 2025, but also by any Paladin player.
- The sophomore was the 2025 Big South Freshman of the Year and second team All-Big South selection.
- Her 85 points and 64 goals rank third-most for a single-season in program history.
- Tied for second in the conference in goals, fourth in points, and sixth in assists.
- Nationally, ranked in the top-25 in goals, goals per game, points, and points per game.
- Tied a school record with 12 points on eight goals, tied for second-most in a single game, and four assists in Furman's 20-18 road win at Wofford.
- Voted Big South Freshman of the Week six times and Big South Offensive Player of the Week once.

18 NEWCOMERS TO THE SQUAD

- Along with 24 returning players to a veteran roster in 2026, Furman will welcome a total of 18 newcomers providing depth and experience.
- The Paladins' 18 newcomers consist of 14 freshmen and four transfers.
- The newcomers are: Avery Adeli, Gabby Bergstrom, Melissa Dardanella, Maura Faul, Maddy Hartnett, Shae Insinga, Riley Knakmuhs, Cassie Larsen, Ayla Moffitt, Lily Mosser, Emily Muir, Cate Noone, Juliette Ogren, Blaine Randolph, Bella Raynish, Isa Robinson, Meredith Rubenstein, Mariella Tomasello.

CSC ACADEMIC ALL-DISTRICT

- Furman had 10 student-athletes receive College Sports Communicators (CSC) At-Large Academic All-District Team, it was announced back in June.
- The women's lacrosse team earned four of those spots, being recognized for their performances both on the field and in the classroom.
- The four student-athletes were: Andrea Fisher, Paige Harman, Skylar Hilmer, and Anna Roser.



2024-25 BIG SOUTH PRESIDENTIAL HONOR ROLL

- The Paladins had 30 of its student-athletes named to the 2024-25 Big South Presidential Honor Roll in June.
- To be named to the Presidential Honor Roll, student-athletes must maintain a grade point average of 3.0 (on a 4.0 scale) or better for the recently-completed academic year.

IWLCA ACADEMIC HONOR SQUAD

- Furman was named an Academic Honor Squad for 2024-25 by the Intercollegiate Women's Lacrosse Coaches Association (IWLCA) in July.
- The Paladins were one of 383 schools across Division I, II, III, and NAIA as IWLCA Honor Squads.
- To qualify, the women's lacrosse team must have posted a 3.2 or higher team GPA for the academic year.
- Additionally, seven Furman players were selected to the 2025 Division I Academic Honor Roll.
- The seven student-athletes were: Andrea Fisher, Grace Gibson, Paige Harman, Reynolds Hester, Skylar Hilmer, Anna Roser, and Abby Shearer.
- To be eligible, student-athletes must be a junior, senior, or graduate and have earned a cumulative academic GPA of 3.50 or greater.

PALADINS IN THE BIG SOUTH

- Furman is in its fourth season as a member of the Big South Conference.
- The Big South is the Paladins' third conference affiliate since the program began in 2015.
- Furman was a member of the ASUN Conference from 2015-17 and Southern Conference from 2018-21.

UP NEXT

- Furman opens up its home schedule next Friday, February 20, hosting Austin Peay for the first time in program history at 6 p.m. from Paladin Stadium.

STAY IN THE KNOW

- Stay up-to-date on all Furman women's lacrosse information by following the Paladins on X (@FUWlax) and Instagram (@FUWlax).

2026 PALADIN HONORS

Team

- Picked third in Big South Preseason Poll

Individual

Skylar Hilmer

- Preseason All-Big South

Lily Toole

- Preseason All-Big South

ROSTER BREAKDOWN

BY CLASS

Graduates (3): Shae Insinga, Audrey Smith, Blaine Randolph

Seniors (5): Madigan Brewer, Grace Gibson, Reynolds Hester, Skylar Hilmer, Abby Shearer

Juniors (7): Taylor Bank, Lilly Dyer, Sailor Henderson, Allie Kandel, Ally Moore, Rachel Sbei, Rachel Ward

Sophomores (13): Lexi Elkin, Reeve Goldstein, Sophia Marcus, Marin Hodor, Anna Kelly, Charlotte Kent, Sam Melville, Zoe Milmoie, Lily Mosser, Bella Raynish, Caroline Rudy, Caroline Smith, Lily Toole

Freshmen (14): Avery Adeli, Gabby Bergstrom, Melissa Dardanello, Maura Faul, Maddy Hartnett, Riley Knakmuhs, Cassie Larsen, Ayla Moffitt, Emily Muir, Cate Noone, Juliette Ogren, Isa Robinson, Meredith Rubenstein, Mariella Tomasello

BY POSITION

Attack (15): Avery Adeli, Taylor Bank, Lexi Elkin, Reeve Goldstein, Reynolds Hester, Marin Hodor, Allie Kandel, Ally Moore, Lily Mosser, Emily Muir, Cate Noone, Blaine Randolph, Bella Raynish, Mariella Tomasello, Lily Toole

Midfield (10): Gabby Bergstrom, Melissa Dardanello, Maura Faul, Shae Insinga, Anna Kelly, Riley Knakmuhs, Ayla Moffitt, Isa Robinson, Caroline Smith, Rachel Ward

Defense (14): Lilly Dyer, Grace Gibson, Sophia Marcus, Maddy Hartnett, Skylar Hilmer, Charlotte Kent, Cassie Larsen, Zoe Milmoie, Juliette Ogren, Meredith Rubenstein, Caroline Rudy, Rachel Sbei, Abby Shearer, Audrey Smith

Goalie (3): Madigan Brewer, Sailor Henderson, Sam Melville

PRONUNCIATION GUIDE

Avery **ADELI**ah-DEH-lee
 Gabby **BERGSTROM**BURG-strum
 Melissa **DARDANELLO** .dar-dah-NEL-oh
 Lilly **DYER**Die-ur
MAURA FAUL MOR-uh Fall
 Reeve **GOLDSTEIN** Gold-STEEN
 Maddy **HARTNETT** HAART-net
 Marin **HODOR** HO-door
SHAE Insinga..... Shay
 Allie **KANDEL** Kan-dl
 Riley **KNAKMUHS** Knock-muhs
ZOE MilmoieZoh-EE
AYLA MOFFITTAY-lah MOF-it
 Lily **MOSSE**MOSS-er
 Emily **MUIR** Myur (like "pure")
 Cate **NOONE** Noon
 Juliette **OGREN** OH-grin
 Bella **RAYNISH**RAY-nish
 Meredith **RUBENSTEIN** . ROO-bin-styne
 Rachel **SBEI** Spay
MARIELLA Tomasello... mah-ree-EH-lah

2026 ROSTER

No.	Name	Yr.	Pos.	Ht.	Hometown/High School (Previous School)
0	Blaine Randolph	Gr.	A	5-5	Charlotte, N.C./Weddington (Anderson (S.C.))
1	Cassie Larsen	Fr.	D	5-9	Cincinnati, Ohio/Indian Hill
2	Riley Knakmuhs	Fr.	M	5-9	Washington, D.C./St. Andrew's Episcopal School
3	Reeve Goldstein	So.	A	5-7	Charlottesville, Va./Western Albemarle
4	Grace Gibson*	Sr.	D	5-7	Orlando, Fla./Lake Highland Prep
5	Sophia Marcus	So.	D	5-5	Lake Zurich, Ill./Lake Zurich
6	Maura Faul	Fr.	M	5-5	Bradenton, Fla./Culver Academies
7	Marin Hodor	So.	A	5-3	Annapolis, Md./St. Mary's
8	Lexi Elkin	So.	A	5-7	Bethesda, Md./Walt Whitman
9	Lily Mosser	So.	A	5-3	Ponte Vedra, Fla./Ponte Vedra (South Florida)
10	Lilly Dyer*	Jr.	D	5-4	Baldwin, Md./St. Paul's School for Girls
11	Abby Shearer	Sr.	D	5-7	Latrobe, Pa./IMG Academy
12	Avery Adeli	Fr.	A	5-8	Moorestown, N.J./Moorestown
13	Allie Kandel	Jr.	A	5-7	Wilbraham, Mass./Groton School
14	Reynolds Hester*	Sr.	A	5-10	Richmond, Va./Collegiate School
15	Zoe Milmoie	So.	D	5-8	Boxford, Mass./Brooks School
16	Rachel Sbei	Jr.	D	5-6	Phoenixville, Pa./Owen J. Roberts
17	Meredith Rubenstein	Fr.	D	5-6	Lake Oswego, Ore./Lake Oswego
18	Lily Toole	So.	A	5-4	Ponte Vedra Beach, Fla./Ponte Vedra
19	Anna Kelly	So.	M	5-5	Mamaroneck, N.Y./School of the Holy Child
20	Cate Noone	Fr.	A	5-6	Foxboro, Mass./Foxboro
21	Caroline Smith	So.	M	5-3	Auburn, N.Y./Auburn
23	Gabby Bergstrom	Fr.	M	5-6	Dayton, Md./River Hill
24	Charlotte Kent	So.	D	5-5	Medford, N.J./Shawnee
25	Caroline Rudy	So.	D	5-8	Halethorpe, Md./Notre Dame Prep
26	Audrey Smith*	Gr.	D	5-7	Granville, Ohio/IMG Academy (UAlbany)
27	Ally Moore	Jr.	A	5-8	Annandale, N.J./North Hunterdon (Eastern Michigan)
28	Sailor Henderson	Jr.	GK	5-7	Greenville, S.C./J.L. Mann
29	Rachel Ward	Jr.	M	5-8	Prior Lake, Minn./Prior Lake (American University)
30	Taylor Bank	Jr.	A	5-7	Parkland, Fla./St. Thomas Aquinas (George Washington)
31	Maddy Hartnett	Fr.	D	5-6	New Canaan, Conn./Convent of the Sacred Heart Greenwich
32	Isabella Robinson	Fr.	M	5-3	North Andover, Mass./North Andover
33	Ayla Moffitt	Fr.	M	5-8	Winter Park, Fla./Lake Highland Prep
35	Melissa Dardanello	Fr.	M	5-3	Basking Ridge, N.J./Oak Knoll School of the Holy Child
36	Skylar Hilmer*	Sr.	D	5-6	San Diego, Calif./Patrick Henry (Eastern Michigan)
37	Mariella Tomasello	Fr.	A	5-4	Salem, N.H./Bishop Guertin
40	Emily Muir	Fr.	A	5-4	Linthicum, Md./Archbishop Spalding
41	Bella Raynish	So.	A	5-7	Orchard Lake, Mich./St. Mary's (Central Michigan)
43	Shae Insinga	Gr.	M	5-5	Wantagh, N.Y./Wantagh (Sacred Heart)
45	Juliette Ogren	Fr.	D	5-2	Hollis, N.H./Hollis Brookline
55	Madigan Brewer	Sr.	GK	5-5	Davidsonville, Md./St. Mary's (UMBC)
88	Sam Melville	So.	GK	5-6	North Andover, Mass./North Andover

* - Captain

Coaching Staff

Head Coach: Gail Wallach (2nd season)

Assistant Coaches: Sarah Farley (2nd season), Sydney McClure (1st season)

GAIL WALLACH

Head Coach
2nd Year • Kean, 1998



The Paladins also boasted one of the top offensive attacks in the country during her first season. Furman led the nation in shot percentage (.528) and ranked in the top-10 in assists per game, draws per game, points per game, free position percentage, scoring margin, and scoring offense.

Gail Wallach, the 2025 Big South Coach of the Year, is in her second season as head coach of the Furman women's lacrosse program. She was announced as the fourth head coach in program history on May 6, 2024.

In 11 seasons as a head coach, Wallach has amassed a 128-54 overall record paced by seven 10-win campaigns including a 14-4 mark in her first season leading the Paladins in 2025.

Wallach guided Furman to its best season in school history last year, leading the program to a school record 14 victories and a share of the Big South Regular Season Championship for the first time in school history. The Paladins set program records for points (447), goals (299), assists (148), and draws (308) in a season while leading the Big South in points, assists, draws, shot percentage, and goals against average. Furman would rank second in the conference in goals.

Seven players earned All-Big South recognition in 2025 highlighted by Big South Co-Offensive Player of the Year Anna Roser, Big South Midfielder of the Year Paige Harman, and Big South Freshman of the Year Lily Toole. Roser, Harman, and Sofija Buzelis were first team picks, while Andrea Fisher and Skylar Hilmer were selected to the second team.

Roser led the Big South in goals, school record 79, and was fourth nationally in goals per game and fifth in goals. Harman, who totaled single season-records of 106 points and 54 assists, topped the league in points and assists and ranked 11th or better nationally in assists, assists per game, and points. Buzelis finished with a program single-season record of 115 draws, which tied for first in the Big South.

Wallach came to Greenville after spending two seasons as



head coach at Anderson (S.C.) University in Anderson, S.C. She guided the Trojans to a 24-11 record over her two seasons, including a 15-3 mark in 2024, an appearance in the South Atlantic Conference Tournament semifinals, and the program's first-ever Intercollegiate Women's Lacrosse Coaches Association (IWLCA) Poll Top-25 ranking. She was hired as the program's first-ever head coach in 2021 and promptly guided Anderson to a 9-8 record in 2023.

The Trojans had the league's top scoring offense in 2024 with 302 goals and sported seven all-conference performers, including the SAC Attacker of the Year, Alicia Cannon, and the SAC Freshman of the Year, Rayne Dobson. Anderson scored over 20 goals in a game seven times highlighted by a 24-1 victory over Mars Hill.

In 2023, Wallach led Anderson to a 9-8 record in its first year as a program that was highlighted a 7-3 mark at home. She coached three all-conference selections in Cannon, who was also voted the SAC Freshman of the Year, Hannah Thomas, and Jackie Tiongco. As a team, the Trojans ranked second in the SAC in clears and ninth nationally in NCAA Division II.

Wallach was hired at Anderson after also starting the University of Alabama in Huntsville program from scratch and leading the Chargers for six seasons. Under her leadership, Huntsville posted a 74-22 (.771) overall record and made an appearance in the Gulf South Conference tournament championship five times. UAH claimed the league's regular season title in 2017 and won back-to-back GSC Tournament championships in 2019 and 2021. The team posted a program-best 16-3 record in 2019 and captured its first-ever GSC Championship.

During her time at Huntsville, Wallach's teams led the nation in scoring in 2016, 2017, and 2018. She coached one Alabama Sports Writers Association Small College Athlete of the Year, three Gulf South Players of the Year, a trio of GSC Freshmen of the Year, a GSC Defensive Player of the Year, one GSC Top Ten Award winner, and 22 All-GSC performers.

Wallach began her coaching career at Emmanuel (Ga.)



College and led the Lions for two seasons. She coached four all-conference selections and one All-American in 2014 after leading to the team to a 9-10 record and semifinal appearance in the National Women's Lacrosse League (NWLL) tournament.

She has also made stops in her career as head women's basketball coach at Rutgers University-Camden, Drew University, and Washington College. Wallach mentored 17 all-conference selections during her basketball coaching career.

Before taking over head coaching duties at Washington, Wallach served as an assistant coach for the women's basketball and lacrosse programs.

Wallach graduated with a Bachelor of Arts from Kean University and earned her MBA from the University of Phoenix.

She was a three-sport performer at Kean and is a member of the Cougars' Hall of Fame. Wallach served as team captain on the women's lacrosse squad while earning All-NJAC honors. She was a two-time All-NJAC and ECAC selection on the hardwood and was also selected a Kodak/WBCA D-III All-American following the 1996-97 season. She is tied atop the Cougars' record book for single season scoring average and owns the school record for most made free throws in a season. Wallach also lettered in field hockey.

2026 FURMAN WOMEN'S LACROSSE NOTES

2025 Furman Women's Lacrosse Furman Combined Team Statistics All games (as of Dec 30, 2025)

RECORD:	OVERALL	HOME	AWAY	NEUTRAL
ALL GAMES	14-4	10-0	4-4	0-0
CONFERENCE	7-1	4-0	3-1	0-0
NON-CONFERENCE	7-3	6-0	1-3	0-0

Date	Opponent		Score	Att.	##	PLAYER	GP	G	A	Pts	Sh	Gw	Up	Dn	GB	DC	TO	CT
Feb 14	OLD DOMINION	w	11-9	114	17	HARMAN, Paige	18	52	54	106	93	1	3	1	14	65	38	7
Feb 22	at Kennesaw State	w	15-11	126	20	ROSER, Anna	18	79	19	98	152	5	5	1	17	8	21	12
Feb 28	DELAWARE STATE	w	15-3	117	18	TOOLE, Lily	18	64	21	85	120	6	3	2	21	1	31	7
Mar 02	MERCYHURST	w	20-4	177	1	BUZELIS, Sofija	18	57	15	72	106	2	4	0	22	115	32	7
Mar 05	DETROIT MERCY	w	18-12	71	9	PONS, Lilly	18	13	11	24	21	0	2	0	2	0	9	1
Mar 08	at UMBC	L	11-13	410	14	HESTER, Reynolds	17	4	9	13	7	0	1	0	2	0	8	0
Mar 15	at Arizona State	L	11-18	512	13	KANDEL, Allie	16	6	4	10	13	0	0	0	7	0	8	1
Mar 22	QUEENS (N.C.)	w	13-12	95	7	HODOR, Marin	9	8	1	9	12	0	0	0	0	0	0	0
* Mar 26	GARDNER-WEBB	w	15-5	67	36	HILMER, Skylar	18	6	3	9	16	0	0	0	16	78	8	9
* Apr 02	at Wofford	w	20-18	114	29	WARD, Rachel	15	1	4	5	6	0	0	0	1	0	6	0
* Apr 04	at High Point	L	11-18	327	33	GALIANO, Nadine	14	4	0	4	6	0	0	0	2	0	9	0
* Apr 12	LONGWOOD	w	23-10	117	21	SMITH, Caroline	15	2	2	4	5	0	0	0	0	26	3	0
* Apr 16	PRESBYTERIAN	w	22-11	93	30	BANK, Taylor	11	1	2	3	4	0	0	0	3	0	4	1
* Apr 19	at Radford	w	21-4	105	3	GOLDSTEIN, Reev	9	1	1	2	4	0	0	0	1	0	1	0
* Apr 23	at Mercer	wot	18-17	139	27	MOORE, Ally	15	1	1	2	1	0	0	0	1	5	0	1
* Apr 26	WINTHROP	w	22-9	117	6	FAUL, Molly	18	0	1	1	0	0	0	0	16	3	7	9
Apr 29	GARDNER-WEBB	w	19-5	89	88	MELVILLE, Sam	2	0	0	0	0	0	0	0	0	0	0	0
May 02	at High Point	L	14-18	203	55	BREWER, Madigan	16	0	0	0	0	0	0	0	14	0	7	3
					45	FISHER, Andrea	18	0	0	0	0	0	0	0	29	0	5	26
					28	HENDERSON, Sail	14	0	0	0	0	0	0	0	16	0	7	4
					26	SMITH, Audrey	18	0	0	0	0	0	0	0	13	0	2	4

TEAM STATISTICS	FUR	OPP
SHOT STATISTICS		
Goals-Shot attempts	299-566	197-442
Goals scored per game	16.61	10.94
Shot pct.	.528	.446
Shots on goal-Attempts	418-566	323-442
SOG pct.	.739	.731
Shots/Game	31.4	24.6
Assists	148	55
Free position Made-Att	36-68	41-80
Free position pct.	.529	.512
MAN-UP OPPORTUNITIES		
Goals-Opportunities	18-0	11-0
Conversion Percent	.000	.000
GOAL BREAKDOWN		
Total Goals	299	197
Man-up	18	11
Man-down	4	2
Free-position	36	41
Unassisted	151	142
Overtime	1	0
Goals scored average	16.54	10.90
GROUND BALLS	270	257
DRAW CONTROLS	308	243
TURNOVERS	248	252
CAUSED TURNOVERS	131	138
CLEARs	243-296	230-289
Clear Pct.	.821	.796
PENALTIES		
Number	0	0
Minutes	0:00	0:00
SHOT CLOCK VIOLATIONS	8	7
ATTENDANCE		
Total	1057	1936
Dates/Avg Per Date	10/106	8/242
Neutral Site #/Avg	0/0	

##	PLAYER	GP	G	A	Pts	Sh	Gw	Up	Dn	GB	DC	TO	CT
17	HARMAN, Paige	18	52	54	106	93	1	3	1	14	65	38	7
20	ROSER, Anna	18	79	19	98	152	5	5	1	17	8	21	12
18	TOOLE, Lily	18	64	21	85	120	6	3	2	21	1	31	7
1	BUZELIS, Sofija	18	57	15	72	106	2	4	0	22	115	32	7
9	PONS, Lilly	18	13	11	24	21	0	2	0	2	0	9	1
14	HESTER, Reynolds	17	4	9	13	7	0	1	0	2	0	8	0
13	KANDEL, Allie	16	6	4	10	13	0	0	0	7	0	8	1
7	HODOR, Marin	9	8	1	9	12	0	0	0	0	0	0	0
36	HILMER, Skylar	18	6	3	9	16	0	0	0	16	78	8	9
29	WARD, Rachel	15	1	4	5	6	0	0	0	1	0	6	0
33	GALIANO, Nadine	14	4	0	4	6	0	0	0	2	0	9	0
21	SMITH, Caroline	15	2	2	4	5	0	0	0	0	26	3	0
30	BANK, Taylor	11	1	2	3	4	0	0	0	3	0	4	1
3	GOLDSTEIN, Reev	9	1	1	2	4	0	0	0	1	0	1	0
27	MOORE, Ally	15	1	1	2	1	0	0	0	1	5	0	1
6	FAUL, Molly	18	0	1	1	0	0	0	0	16	3	7	9
88	MELVILLE, Sam	2	0	0	0	0	0	0	0	0	0	0	0
55	BREWER, Madigan	16	0	0	0	0	0	0	0	14	0	7	3
45	FISHER, Andrea	18	0	0	0	0	0	0	0	29	0	5	26
28	HENDERSON, Sail	14	0	0	0	0	0	0	0	16	0	7	4
26	SMITH, Audrey	18	0	0	0	0	0	0	0	12	0	2	9
25	RUDY, Caroline	4	0	0	0	0	0	0	0	1	0	1	1
24	KENT, Charlotte	17	0	0	0	0	0	0	0	13	0	1	5
19	KELLY, Anna	3	0	0	0	0	0	0	0	0	0	0	0
16	SBEI, Rachel	18	0	0	0	0	0	0	0	15	2	9	4
15	MILMOE, Zoe	11	0	0	0	0	0	0	0	4	0	4	1
11	SHEARER, Abby	10	0	0	0	0	0	0	0	1	1	0	3
10	DYER, Lilly	17	0	0	0	0	0	0	0	25	0	6	9
8	ELKIN, Lexi	3	0	0	0	0	0	0	0	1	0	1	0
5	HARCUS, Sophia	5	0	0	0	0	0	0	0	0	0	0	1
4	GIBSON, Grace	18	0	0	0	0	0	0	0	14	2	7	9
Total		18	299	148	447	566	14	18	4	270	308	248	131
Opponents		18	197	55	252	442	4	11	2	257	243	252	138

##	Goalie	GP	Min.	GA	GAAvg	Save	Pct	W-L-T
88	MELVILLE, Sam	2	30:00	3	6.00	2	.400	0-0-0
55	BREWER, Madigan	16	604:11	99	9.83	72	.421	11-1-0
28	HENDERSON, Sail	14	450:28	95	12.65	52	.354	3-3-0
Total		18	1084:39	197	10.90	126	.390	14-4-0
Opponents		18	1084:39	299	16.54	119	.285	4-14-0

Goals by Period	1st	2nd	3rd	4th	OT	Total
Furman	71	76	76	75	1	299
Opponents	56	59	45	37	0	197

Saves by Period	1st	2nd	3rd	4th	OT	Total
Furman	21	33	34	38	0	126
Opponents	31	27	34	27	0	119

Shots by Period	1st	2nd	3rd	4th	OT	Total
Furman	143	145	142	135	1	566
Opponents	112	119	113	94	4	442

Shots on Goal	1st	2nd	3rd	4th	OT	Total
Furman	102	103	110	102	1	418
Opponents	77	92	79	75	0	323



BLAINE RANDOLPH 0

GRADUATE STUDENT • ATTACK

5-5 • CHARLOTTE, N.C. / WEDDINGTON (ANDERSON (S.C.))

CAREER STATISTICS

YEAR	GP-GS	G	A	Pts	Sh	UP	GB	TO	CT	DC	RC-YC-GC
2021 (at RU)	0-0	0	0	0	0	0	0	0	0	0	0-0-0
2022 (at RU)	3-1	0	0	0	0	0	2	3	0	0	0-0-0
2023 (at RU)	1-0	0	0	0	0	0	0	1	0	0	0-0-0
2024 (at AU)	0-0	0	0	0	0	0	0	0	0	0	0-0-0
2025 (at AU)	17-5	8	6	14	18	1	5	9	3	1	0-0-0
2026	0-0	0	0	0	0	0	0	0	0	0	0-0-0
Total	21-6	8	6	14	18	1	7	13	3	1	0-0-0

CAREER HIGHS

Points: 4, Mars Hill, 4/19/25

Goals: 3, Mars Hill, 4/19/25

Assists: 2, at Emory & Henry, 4/16/25

Shots: 6, Coker, 3/28/25

Ground Balls: 2, at Palm Beach Atlantic, 3/11/25

Draw Controls: 1, at Emory & Henry, 4/16/25

Caused Turnovers: 1, at Emory & Henry, 4/16/25

SEASON HIGHS

Points:

Goals:

Assists:

Shots:

Ground Balls:

Draw Controls:

Caused Turnovers:



RILEY KNAKMUHS 2

FRESHMAN • MIDFIELD

5-9 • WASHINGTON, D.C. / ST. ANDREW'S EPISCOPAL SCHOOL

CAREER STATISTICS

YEAR	GP-GS	G	A	Pts	Sh	UP	GB	TO	CT	DC	RC-YC-GC
2026	0-0	0	0	0	0	0	0	0	0	0	0-0-0
Total	0-0	0	0	0	0	0	0	0	0	0	0-0-0

CAREER HIGHS

Points:

Goals:

Assists:

Shots:

Ground Balls:

Draw Controls:

Caused Turnovers:

SEASON HIGHS

Points:

Goals:

Assists:

Shots:

Ground Balls:

Draw Controls:

Caused Turnovers:



CASSIE LARSEN 1

FRESHMAN • DEFENSE

5-9 • CINCINNATI, OHIO / INDIAN HILL

CAREER STATISTICS

YEAR	GP-GS	G	A	Pts	Sh	UP	GB	TO	CT	DC	RC-YC-GC
2026	0-0	0	0	0	0	0	0	0	0	0	0-0-0
Total	0-0	0	0	0	0	0	0	0	0	0	0-0-0

CAREER HIGHS

Points:

Goals:

Assists:

Shots:

Ground Balls:

Draw Controls:

Caused Turnovers:

SEASON HIGHS

Points:

Goals:

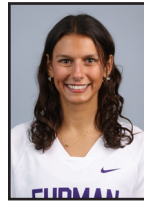
Assists:

Shots:

Ground Balls:

Draw Controls:

Caused Turnovers:



REEVE GOLDSTEIN 3

FRESHMAN • ATTACK

5-7 • CHARLOTTESVILLE, VA. / WESTERN ALBEMARLE

CAREER STATISTICS

YEAR	GP-GS	G	A	Pts	Sh	UP	GB	TO	CT	DC	RC-YC-GC
2025	9-0	1	1	2	4	0	1	1	0	0	0-0-0
Total	9-0	1	1	2	4	0	1	1	0	0	0-0-2

CAREER HIGHS

Points: 1, twice

Goals: 1, Winthrop, 4/26/25

Assists: 1, Delaware State, 2/28/25

Shots: 2, twice

Ground Balls: 1, Detroit Mercy, 3/5/25

Draw Controls: N/A

Caused Turnovers: N/A

SEASON HIGHS

Points:

Goals:

Assists:

Shots:

Ground Balls:

Draw Controls:

Caused Turnovers:



GRACE GIBSON

4

JUNIOR • DEFENSE

5-7 • ORLANDO, FLA. / LAKE HIGHLAND PREP

CAREER STATISTICS

YEAR	GP-GS	G	A	Pts	Sh	UP	GB	TO	CT	DC	RC-YC-GC
2023	18-18	0	0	0	0	0	31	10	13	1	0-2-0
2024	18-18	0	0	0	0	0	18	9	15	2	0-3-1
2025	18-18	0	0	0	0	0	14	7	9	2	0-2-1
2026	0-0	0	0	0	0	0	0	0	0	0	0-0-0
Total	54-54	0	0	0	0	0	63	26	37	5	0-7-2

CAREER HIGHS

Points: N/A

Goals: N/A

Assists: N/A

Shots: N/A

Ground Balls: 4, at Mercer, 4/15/23

Draw Controls: 1, 5 times

Caused Turnovers: 5, High Point, 4/20/24

SEASON HIGHS

Points:

Goals:

Assists:

Shots:

Ground Balls:

Draw Controls:

Caused Turnovers:



MAURA FAUL

6

FRESHMAN • MIDFIELD

5-5 • BRADENTON, FLA. / CULVER ACADEMIES

CAREER STATISTICS

YEAR	GP-GS	G	A	Pts	Sh	UP	GB	TO	CT	DC	RC-YC-GC
2026	0-0	0	0	0	0	0	0	0	0	0	0-0-0
Total	0-0	0	0	0	0	0	0	0	0	0	0-0-0

CAREER HIGHS

Points:

Goals:

Assists:

Shots:

Ground Balls:

Draw Controls:

Caused Turnovers:

SEASON HIGHS

Points:

Goals:

Assists:

Shots:

Ground Balls:

Draw Controls:

Caused Turnovers:



SOPHIA HARCUS

5

FRESHMAN • DEFENSE

5-5 • LAKE ZURICH, ILL. / LAKE ZURICH

CAREER STATISTICS

YEAR	GP-GS	G	A	Pts	Sh	UP	GB	TO	CT	DC	RC-YC-GC
2025	5-0	0	0	0	0	0	0	0	1	0	0-0-0
2026	0-0	0	0	0	0	0	0	0	0	0	0-0-0
Total	5-0	0	0	0	0	0	0	0	1	0	0-0-0

CAREER HIGHS

Points: N/A

Goals: N/A

Assists: N/A

Shots: N/A

Ground Balls: N/A

Draw Controls: N/A

Caused Turnovers: 1, Delaware State, 2/28/25

SEASON HIGHS

Points:

Goals:

Assists:

Shots:

Ground Balls:

Draw Controls:

Caused Turnovers:



MARIN HODOR

7

FRESHMAN • ATTACK

5-3 • ANNAPOLIS, MD. / ST. MARY'S

CAREER STATISTICS

YEAR	GP-GS	G	A	Pts	Sh	UP	GB	TO	CT	DC	RC-YC-GC
2025	9-0	8	1	9	12	0	0	0	0	0	0-0-0
2026	0-0	0	0	0	0	0	0	0	0	0	0-0-0
Total	9-0	8	1	9	12	0	0	0	0	0	0-0-0

CAREER HIGHS

Points: 3, vs. High Point, 5/2/25

Goals: 3, vs. High Point, 5/2/25

Assists: 1, at Radford, 4/19/25

Shots: 4, vs. High Point, 5/2/25

Ground Balls: N/A

Draw Controls: N/A

Caused Turnovers: N/A

SEASON HIGHS

Points:

Goals:

Assists:

Shots:

Ground Balls:

Draw Controls:

Caused Turnovers:

2026 FURMAN WOMEN'S LACROSSE NOTES



LEXI ELKIN

8

FRESHMAN • ATTACK

5-7 • BETHESDA, MD. / WALT WHITMAN

CAREER STATISTICS

YEAR	GP-GS	G	A	Pts	Sh	UP	GB	TO	CT	DC	RC-YC-GC
2025	3-0	0	0	0	0	0	1	1	0	0	0-0-0
Total	3-0	0	0	0	0	0	1	1	0	0	0-0-0

CAREER HIGHS

Points: N/A
Goals: N/A
Assists: N/A
Shots: N/A
Ground Balls: 1, at UMBC, 3/9/25
Draw Controls: N/A
Caused Turnovers: N/A

SEASON HIGHS

Points:
Goals:
Assists:
Shots:
Ground Balls:
Draw Controls:
Caused Turnovers:



LILLY DYER

10

SOPHOMORE • DEFENSE

5-5 • BALDWIN, MD. / ST. PAUL'S SCHOOL FOR GIRLS

CAREER STATISTICS

YEAR	GP-GS	G	A	Pts	Sh	UP	GB	TO	CT	DC	RC-YC-GC
2024	18-18	0	0	0	0	0	15	7	11	5	0-2-1
2025	17-17	0	0	0	0	0	25	6	9	0	0-0-0
2026	0-0	0	0	0	0	0	0	0	0	0	0-0-0
Total	35-35	0	0	0	0	0	40	13	20	5	0-2-1

CAREER HIGHS

Points: N/A
Goals: N/A
Assists: N/A
Shots: N/A
Ground Balls: 4, twice
Draw Controls: 2, Radford, 4/24/24
Caused Turnovers: 2, 3 times

SEASON HIGHS

Points:
Goals:
Assists:
Shots:
Ground Balls:
Draw Controls:
Caused Turnovers:



LILY MOSSER

9

SOPHOMORE • ATTACK

5-3 • PONTE VEDRA, FLA. / PONTE VEDRA (SOUTH FLORIDA)

CAREER STATISTICS

YEAR	GP-GS	G	A	Pts	Sh	UP	GB	TO	CT	DC	RC-YC-GC
2025 (at USF)	12-0	3	1	4	6	0	1	4	0	0	0-0-0
2026	0-0	0	0	0	0	0	0	0	0	0	0-0-0
Total	12-0	3	1	4	6	0	1	4	0	0	0-0-0

CAREER HIGHS

Points: 1, 4 times
Goals: 1, 3 times
Assists: 1, at Charlotte, 4/4/25
Shots: 1, 6 times
Ground Balls: 1, at James Madison, 4/19/25
Draw Controls: N/A
Caused Turnovers: N/A

SEASON HIGHS

Points:
Goals:
Assists:
Shots:
Ground Balls:
Draw Controls:
Caused Turnovers:



ABBY SHEARER

11

JUNIOR • DEFENSE

5-7 • LATROBE, PA. / IMG ACADEMY

CAREER STATISTICS

YEAR	GP-GS	G	A	Pts	Sh	UP	GB	TO	CT	DC	RC-YC-GC
2023	18-3	0	1	1	0	0	13	2	13	1	0-1-0
2024	14-0	0	0	0	0	0	8	2	5	0	0-0-0
2025	10-1	0	0	0	0	0	1	0	3	1	0-0-0
2026	0-0	0	0	0	0	0	0	0	0	0	0-0-0
Total	42-4	0	1	1	0	0	22	4	20	1	0-1-0

CAREER HIGHS

Points: 1, at Presbyterian, 4/29/23
Goals: N/A
Assists: 1, at Presbyterian, 4/29/23
Shots: N/A
Ground Balls: 3, Stonehill, 3/7/23
Draw Controls: 1, twice
Caused Turnovers: 2, 4 times

SEASON HIGHS

Points:
Goals:
Assists:
Shots:
Ground Balls:
Draw Controls:
Caused Turnovers:



AVERY ADELI

12

FRESHMAN • ATTACK

5-8 • MOORESTOWN, N.J. / MOORESTOWN

CAREER STATISTICS

YEAR	GP-GS	G	A	Pts	Sh	UP	GB	TO	CT	DC	RC-YC-GC
2026	0-0	0	0	0	0	0	0	0	0	0	0-0-0
Total	0-0	0	0	0	0	0	0	0	0	0	0-0-0

CAREER HIGHS

Points:
Goals:
Assists:
Shots:
Ground Balls:
Draw Controls:
Caused Turnovers:

SEASON HIGHS

Points:
Goals:
Assists:
Shots:
Ground Balls:
Draw Controls:
Caused Turnovers:



REYNOLDS HESTER

14

JUNIOR • ATTACK

5-10 • RICHMOND, VA. / COLLEGIATE SCHOOL

CAREER STATISTICS

YEAR	GP-GS	G	A	Pts	Sh	UP	GB	TO	CT	DC	RC-YC-GC
2023	5-4	2	6	8	6	0	2	8	0	0	0-0-0
2024	17-16	10	15	25	18	0	6	32	0	0	0-0-3
2025	17-0	4	9	13	7	1	2	8	0	0	0-0-1
2026	0-0	0	0	0	0	0	0	0	0	0	0-0-0
Total	39-20	16	30	46	31	1	10	48	0	0	0-0-4

CAREER HIGHS

Points: 4, at Longwood, 4/17/24
Goals: 4, at Longwood, 4/17/24
Assists: 3, vs. High Point, 5/3/24
Shots: 5, at Longwood, 4/17/24
Ground Balls: 2, at Kennesaw State, 2/22/25
Draw Controls: N/A
Caused Turnovers: N/A

SEASON HIGHS

Points:
Goals:
Assists:
Shots:
Ground Balls:
Draw Controls:
Caused Turnovers:



ALLIE KANDEL

13

SOPHOMORE • ATTACK

5-7 • WILBRAHAM, MASS. / GROTON SCHOOL

CAREER STATISTICS

YEAR	GP-GS	G	A	Pts	Sh	UP	GB	TO	CT	DC	RC-YC-GC
2024	10-0	0	0	0	2	0	0	3	0	0	0-0-0
2025	16-7	6	4	10	13	0	7	8	1	0	0-0-1
2026	0-0	0	0	0	0	0	0	0	0	0	0-0-0
Total	26-7	6	4	10	15	0	7	11	1	0	0-0-1

CAREER HIGHS

Points: 2, 3 times
Goals: 2, at Wofford, 4/2/25
Assists: 2, Winthrop, 4/26/25
Shots: 3, Longwood, 4/12/25
Ground Balls: 2, twice
Draw Controls: N/A
Caused Turnovers: 1, at Mercer, 4/23/25

SEASON HIGHS

Points:
Goals:
Assists:
Shots:
Ground Balls:
Draw Controls:
Caused Turnovers:



ZOE MILMOE

15

FRESHMAN • DEFENSE

5-8 • BOXFORD, MASS. / BROOKS SCHOOL

CAREER STATISTICS

YEAR	GP-GS	G	A	Pts	Sh	UP	GB	TO	CT	DC	RC-YC-GC
2025	11-0	0	0	0	0	0	4	4	1	0	0-1-0
2026	0-0	0	0	0	0	0	0	0	0	0	0-0-0
Total	11-0	0	0	0	0	0	4	4	1	0	0-1-0

CAREER HIGHS

Points: N/A
Goals: N/A
Assists: N/A
Shots: N/A
Ground Balls: 2, at Mercer, 4/23/25
Draw Controls: N/A
Caused Turnovers: 1, at Mercer, 4/23/25

SEASON HIGHS

Points:
Goals:
Assists:
Shots:
Ground Balls:
Draw Controls:
Caused Turnovers:

2026 FURMAN WOMEN'S LACROSSE NOTES



RACHEL SBEI

16

SOPHOMORE • DEFENSE

5-6 • PHOENIXVILLE, PA. / OWEN J. ROBERTS

CAREER STATISTICS

YEAR	GP-GS	G	A	Pts	Sh	UP	GB	TO	CT	DC	RC-YC-GC
2024	18-17	0	0	0	0	0	16	4	6	3	0-2-0
2025	18-17	0	0	0	0	0	15	9	4	2	0-1-1
2026	0-0	0	0	0	0	0	0	0	0	0	0-0-0
Total	36-34	0	0	0	0	0	31	13	10	5	0-3-1

CAREER HIGHS

Points: N/A

Goals: N/A

Assists: N/A

Shots: 1, at Longwood, 4/17/24

Ground Balls: 3, Wofford, 3/27/24

Draw Controls: 1, 5 times

Caused Turnovers: 3, Winthrop, 4/26/25

SEASON HIGHS

Points:

Goals:

Assists:

Shots:

Ground Balls:

Draw Controls:

Caused Turnovers:



LILY TOOLE

18

FRESHMAN • ATTACK

5-4 • PONTE VEDRA BEACH, FLA. / PONTE VEDRA

CAREER STATISTICS

YEAR	GP-GS	G	A	Pts	Sh	UP	GB	TO	CT	DC	RC-YC-GC
2025	18-18	64	21	85	120	3	21	31	7	1	0-1-2
2026	0-0	0	0	0	0	0	0	0	0	0	0-0-0
Total	18-18	64	21	85	120	3	21	31	7	1	0-1-2

CAREER HIGHS

Points: 12, at Wofford, 4/2/25

Goals: 8, at Wofford, 4/2/25

Assists: 4, twice

Shots: 11, Presbyterian, 4/16/25

Ground Balls: 3, twice

Draw Controls: 1, Gardner-Webb, 3/26/25

Caused Turnovers: 1, 7 times

SEASON HIGHS

Points:

Goals:

Assists:

Shots:

Ground Balls:

Draw Controls:

Caused Turnovers:



MEREDITH RUBENSTEIN

17

FRESHMAN • DEFENSE

5-6 • LAKE OSWEGO, ORE. / LAKE OSWEGO

CAREER STATISTICS

YEAR	GP-GS	G	A	Pts	Sh	UP	GB	TO	CT	DC	RC-YC-GC
2026	0-0	0	0	0	0	0	0	0	0	0	0-0-0
Total	0-0	0	0	0	0	0	0	0	0	0	0-0-0

CAREER HIGHS

Points:

Goals:

Assists:

Shots:

Ground Balls:

Draw Controls:

Caused Turnovers:

SEASON HIGHS

Points:

Goals:

Assists:

Shots:

Ground Balls:

Draw Controls:

Caused Turnovers:



ANNA KELLY

19

FRESHMAN • MIDFIELD

5-5 • MAMARONECK, FLA. / SCHOOL OF THE HOLY CHILD

CAREER STATISTICS

YEAR	GP-GS	G	A	Pts	Sh	UP	GB	TO	CT	DC	RC-YC-GC
2025	3-0	0	0	0	0	0	0	0	0	0	0-0-0
2026	0-0	0	0	0	0	0	0	0	0	0	0-0-0
Total	3-0	0	0	0	0	0	0	0	0	0	0-0-0

CAREER HIGHS

Points: N/A

Goals: N/A

Assists: N/A

Shots: N/A

Ground Balls: N/A

Draw Controls: N/A

Caused Turnovers: N/A

SEASON HIGHS

Points:

Goals:

Assists:

Shots:

Ground Balls:

Draw Controls:

Caused Turnovers:



CATE NOONE

20

FRESHMAN • ATTACK
5-6 • FOXBORO, MASS. / FOXBORO

CAREER STATISTICS

YEAR	GP-GS	G	A	Pts	Sh	UP	GB	TO	CT	DC	RC-YC-GC
2026	0-0	0	0	0	0	0	0	0	0	0	0-0-0
Total	0-0	0	0	0	0	0	0	0	0	0	0-0-0

CAREER HIGHS

Points:
Goals:
Assists:
Shots:
Ground Balls:
Draw Controls:
Caused Turnovers:

SEASON HIGHS

Points:
Goals:
Assists:
Shots:
Ground Balls:
Draw Controls:
Caused Turnovers:



GABBY BERGSTROM

23

FRESHMAN • MIDFIELD
5-6 • DAYTON, MD. / RIVER HILL

CAREER STATISTICS

YEAR	GP-GS	G	A	Pts	Sh	UP	GB	TO	CT	DC	RC-YC-GC
2026	0-0	0	0	0	0	0	0	0	0	0	0-0-0
Total	0-0	0	0	0	0	0	0	0	0	0	0-0-0

CAREER HIGHS

Points:
Goals:
Assists:
Shots:
Ground Balls:
Draw Controls:
Caused Turnovers:

SEASON HIGHS

Points:
Goals:
Assists:
Shots:
Ground Balls:
Draw Controls:
Caused Turnovers:



CAROLINE SMITH

21

FRESHMAN • MIDFIELD
5-3 • AUBURN, N.Y. / AUBURN

CAREER STATISTICS

YEAR	GP-GS	G	A	Pts	Sh	UP	GB	TO	CT	DC	RC-YC-GC
2025	15-2	2	2	4	5	0	0	3	0	26	0-1-3
2026	0-0	0	0	0	0	0	0	0	0	0	0-0-0
Total	15-2	2	2	4	5	0	0	3	0	26	0-1-3

CAREER HIGHS

Points: 2, Delaware State, 2/28/25
Goals: 2, Delaware State, 2/28/25
Assists: 1, twice
Shots: 4, Delaware State, 2/28/25
Ground Balls: N/A
Draw Controls: 8, Longwood, 4/12/25
Caused Turnovers: N/A

SEASON HIGHS

Points:
Goals:
Assists:
Shots:
Ground Balls:
Draw Controls:
Caused Turnovers:



CHARLOTTE KENT

24

FRESHMAN • DEFENSE
5-5 • MEDFORD, N.J. / SHAWNEE

CAREER STATISTICS

YEAR	GP-GS	G	A	Pts	Sh	UP	GB	TO	CT	DC	RC-YC-GC
2025	17-0	0	0	0	0	0	13	1	5	0	0-1-2
2026	0-0	0	0	0	0	0	0	0	0	0	0-0-0
Total	17-0	0	0	0	0	0	13	1	5	0	0-1-2

CAREER HIGHS

Points: 1, at Radford, 4/19/25
Goals: N/A
Assists: 1, at Radford, 4/19/25
Shots: N/A
Ground Balls: 2, twice
Draw Controls: N/A
Caused Turnovers: 2, Winthrop, 4/26/25

SEASON HIGHS

Points:
Goals:
Assists:
Shots:
Ground Balls:
Draw Controls:
Caused Turnovers:



CAROLINE RUDY

25

FRESHMAN • DEFENSE

5-8 • HALETHORPE, MD. / NOTRE DAME PREP

CAREER STATISTICS

YEAR	GP-GS	G	A	Pts	Sh	UP	GB	TO	CT	DC	RC-YC-GC
2025	4-0	0	0	0	0	0	1	1	1	0	0-0-0
2026	0-0	0	0	0	0	0	0	0	0	0	0-0-0
Total	4-0	0	0	0	0	0	1	1	1	0	0-0-0

CAREER HIGHS

Points: N/A

Goals: N/A

Assists: N/A

Shots: N/A

Ground Balls: 1, Longwood, 4/12/25

Draw Controls: N/A

Caused Turnovers: 1, Delaware State, 2/28/25

SEASON HIGHS

Points:

Goals:

Assists:

Shots:

Ground Balls:

Draw Controls:

Caused Turnovers:



ALLY MOORE

27

SOPHOMORE • ATTACK

5-8 • ANNANDALE, N.J. / NORTH HUNTERDON / EASTERN MICHIGAN

CAREER STATISTICS

YEAR	GP-GS	G	A	Pts	Sh	UP	GB	TO	CT	DC	RC-YC-GC
2024 (at EMU)	12-3	2	4	6	11	1	6	8	0	0	0-0-1
2025	15-0	1	1	2	1	0	1	0	1	5	0-0-0
2026	0-0	0	0	0	0	0	0	0	0	0	0-0-0
Total	27-3	3	5	8	12	1	7	8	1	5	0-0-1

CAREER HIGHS

Points: 2, twice

Goals: 1, at Detroit Mercy, 4/7/24

Assists: 2, at Akron, 3/24/24

Shots: 4, at Detroit Mercy, 4/7/24

Ground Balls: 1, twice

Draw Controls: 2, Mercyhurst, 3/2/25

Caused Turnovers: N/A

SEASON HIGHS

Points:

Goals:

Assists:

Shots:

Ground Balls:

Draw Controls:

Caused Turnovers:



AUDREY SMITH

26

GRADUATE STUDENT • DEFENSE

5-7 • GRANVILLE, OHIO / IMG ACADEMY (UALBANY)

CAREER STATISTICS

YEAR	GP-GS	G	A	Pts	Sh	UP	GB	TO	CT	DC	RC-YC-GC
2022 (at UA)	0-0	0	0	0	0	0	0	0	0	0	0-0-0
2023	15-1	2	1	3	6	0	7	4	1	0	0-0-0
2024	17-0	5	1	6	10	0	0	4	0	0	0-0-0
2025	18-9	0	0	0	0	0	12	2	9	0	0-0-2
2026	0-0	0	0	0	0	0	0	0	0	0	0-0-0
Total	50-10	7	2	9	16	0	19	10	10	0	0-0-2

CAREER HIGHS

Points: 2, at Gardner-Webb, 3/30/24

Goals: 2, at Gardner-Webb, 3/30/24

Assists: 1, twice

Shots: 3, at Liberty, 3/25/23

Ground Balls: 3, twice

Draw Controls: N/A

Caused Turnovers: 2, twice

SEASON HIGHS

Points:

Goals:

Assists:

Shots:

Ground Balls:

Draw Controls:

Caused Turnovers:



SAILOR HENDERSON

28

SOPHOMORE • GOALIE

5-7 • GREENVILLE, S.C. / J.L. MANN

CAREER STATISTICS

YEAR	GP-GS	G	A	Pts	Sh	UP	GB	TO	CT	DC	RC-YC-GC
2024	11-1	0	0	0	0	0	14	4	1	0	0-0-0
2025	14-6	0	0	0	0	0	16	7	4	0	0-0-0
2026	0-0	0	0	0	0	0	0	0	0	0	0-0-0
Total	25-7	0	0	0	0	0	30	11	5	0	0-0-0

CAREER GOALKEEPING STATISTICS

YEAR	GP-GS	Minutes	GA	GAA	Saves	Save%	W	L	T	Sho
2024	11-1	299:23	75	13.23	35	.318	1	2	0	0
2025	14-6	450:28	95	12.65	52	.354	3	3	0	0
2026	0-0	0:00	0	0.00	0	.000	0	0	0	0
Total	25-7	778:59	170	13.09	87	.339	4	5	0	0

CAREER HIGHS

Saves: 10, Old Dominion, 2/14/25

Ground Balls: 5, at Wofford, 4/2/25

Caused Turnovers: 2, at Wofford, 4/2/25

SEASON HIGHS

Saves:

Ground Balls:

Caused Turnovers:



RACHEL WARD

29

SOPHOMORE • MIDFIELD

5-8 • PRIOR LAKE, MINN. / PRIOR LAKE / AMERICAN

CAREER STATISTICS

YEAR	GP-GS	G	A	Pts	Sh	UP	GB	TO	CT	DC	RC-YC-GC
2024 (at AU)	1-0	1	0	1	1	0	2	1	0	0	0-0-0
2025	15-0	1	4	5	6	0	1	6	0	0	0-1-0
2026	0-0	0	0	0	0	0	0	0	0	0	0-0-0
Total	16-0	2	4	6	7	0	3	7	0	0	0-1-0

CAREER HIGHS

Points: 2, Detroit Mercy, 3/5/25

Goals: 1, twice

Assists: 2, Detroit Mercy, 3/5/25

Shots: 3, Mercyhurst, 3/2/25

Ground Balls: 2, Howard, 2/13/24

Draw Controls: N/A

Caused Turnovers: N/A

SEASON HIGHS

Points:

Goals:

Assists:

Shots:

Ground Balls:

Draw Controls:

Caused Turnovers:



MADDY HARTNETT

31

FRESHMAN • DEFENSE

5-6 • NEW CANAAN, CONN. / CONVENT OF THE SACRED HEART GREENWICH

CAREER STATISTICS

YEAR	GP-GS	G	A	Pts	Sh	UP	GB	TO	CT	DC	RC-YC-GC
2026	0-0	0	0	0	0	0	0	0	0	0	0-0-0
Total	0-0	0	0	0	0	0	0	0	0	0	0-0-0

CAREER HIGHS

Points:

Goals:

Assists:

Shots:

Ground Balls:

Draw Controls:

Caused Turnovers:

SEASON HIGHS

Points:

Goals:

Assists:

Shots:

Ground Balls:

Draw Controls:

Caused Turnovers:



TAYLOR BANK

30

SOPHOMORE • ATTACK

5-7 • PARKLAND, FLA. / ST. THOMAS AQUINAS / GEORGE WASHINGTON

CAREER STATISTICS

YEAR	GP-GS	G	A	Pts	Sh	UP	GB	TO	CT	DC	RC-YC-GC
2024 (at GWU)	0-0	0	0	0	0	0	0	0	0	0	0-0-0
2025	11-0	1	2	3	4	0	3	4	1	0	0-0-0
2026	0-0	0	0	0	0	0	0	0	0	0	0-0-0
Total	11-0	1	2	3	4	0	3	4	1	0	0-0-0

CAREER HIGHS

Points: 1, 3 times

Goals: 1, Winthrop, 4/26/25

Assists: 1, twice

Shots: 1, 4 times

Ground Balls: 1, 3 times

Draw Controls: N/A

Caused Turnovers: 1, Gardner-Webb, 3/26/25

SEASON HIGHS

Points:

Goals:

Assists:

Shots:

Ground Balls:

Draw Controls:

Caused Turnovers:



ISA ROBINSON

32

FRESHMAN • MIDFIELD

5-3 • NORTH ANDOVER, MASS. / NORTH ANDOVER

CAREER STATISTICS

YEAR	GP-GS	G	A	Pts	Sh	UP	GB	TO	CT	DC	RC-YC-GC
2026	0-0	0	0	0	0	0	0	0	0	0	0-0-0
Total	0-0	0	0	0	0	0	0	0	0	0	0-0-0

CAREER HIGHS

Points:

Goals:

Assists:

Shots:

Ground Balls:

Draw Controls:

Caused Turnovers:

SEASON HIGHS

Points:

Goals:

Assists:

Shots:

Ground Balls:

Draw Controls:

Caused Turnovers:

2026 FURMAN WOMEN'S LACROSSE NOTES



AYLA MOFFITT

33

FRESHMAN • MIDFIELD

5-8 • WINTER PARK, FLA. / LAKE HIGHLAND PREP

CAREER STATISTICS

YEAR	GP-GS	G	A	Pts	Sh	UP	GB	TO	CT	DC	RC-YC-GC
2026	0-0	0	0	0	0	0	0	0	0	0	0-0-0
Total	0-0	0	0	0	0	0	0	0	0	0	0-0-0

CAREER HIGHS

Points:
Goals:
Assists:
Shots:
Ground Balls:
Draw Controls:
Caused Turnovers:

SEASON HIGHS

Points:
Goals:
Assists:
Shots:
Ground Balls:
Draw Controls:
Caused Turnovers:



SKYLAR HILMER

36

JUNIOR • DEFENSE

5-6 • SAN DIEGO, CALIF. / PATRICK HENRY / EASTERN MICHIGAN

CAREER STATISTICS

YEAR	GP-GS	G	A	Pts	Sh	UP	GB	TO	CT	DC	RC-YC-GC
2023 (at EMU)	15-8	12	3	15	30	1	18	11	7	22	0-1-0
2024 (at EMU)	15-3	9	1	10	23	0	8	10	4	8	0-1-0
2025	18-18	6	3	9	16	0	16	8	9	78	0-2-1
2026	0-0	0	0	0	0	0	0	0	0	0	0-0-0
Total	48-29	27	7	34	69	1	42	29	20	109	0-5-1

CAREER HIGHS

Points: 5, Detroit Mercy, 4/29/23
Goals: 3, 3 times
Assists: 2, Detroit Mercy, 4/29/23
Shots: 7, at Youngstown State, 4/21/24
Ground Balls: 5, at Xavier, 3/12/23
Draw Controls: 9, twice
Caused Turnovers: 2, 4 times

SEASON HIGHS

Points:
Goals:
Assists:
Shots:
Ground Balls:
Draw Controls:
Caused Turnovers:



MELISSA DARDANELLO

35

FRESHMAN • MIDFIELD

5-3 • BASKING RIDGE, N.J. / OAK KNOLL SCHOOL OF THE HOLY CHILD

CAREER STATISTICS

YEAR	GP-GS	G	A	Pts	Sh	UP	GB	TO	CT	DC	RC-YC-GC
2026	0-0	0	0	0	0	0	0	0	0	0	0-0-0
Total	0-0	0	0	0	0	0	0	0	0	0	0-0-0

CAREER HIGHS

Points:
Goals:
Assists:
Shots:
Ground Balls:
Draw Controls:
Caused Turnovers:

SEASON HIGHS

Points:
Goals:
Assists:
Shots:
Ground Balls:
Draw Controls:
Caused Turnovers:



MARIELLA TOMASELLO

37

FRESHMAN • ATTACK

5-4 • SALEM, N.H. / BISHOP GUERTIN

CAREER STATISTICS

YEAR	GP-GS	G	A	Pts	Sh	UP	GB	TO	CT	DC	RC-YC-GC
2026	0-0	0	0	0	0	0	0	0	0	0	0-0-0
Total	0-0	0	0	0	0	0	0	0	0	0	0-0-0

CAREER HIGHS

Points:
Goals:
Assists:
Shots:
Ground Balls:
Draw Controls:
Caused Turnovers:

SEASON HIGHS

Points:
Goals:
Assists:
Shots:
Ground Balls:
Draw Controls:
Caused Turnovers:



EMILY MUIR

40

FRESHMAN • ATTACK

5-4 • LINTHICUM, MD. / ARCHBISHOP SPALDING

CAREER STATISTICS

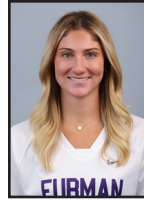
YEAR	GP-GS	G	A	Pts	Sh	UP	GB	TO	CT	DC	RC-YC-GC
2026	0-0	0	0	0	0	0	0	0	0	0	0-0-0
Total	0-0	0	0	0	0	0	0	0	0	0	0-0-0

CAREER HIGHS

Points:
Goals:
Assists:
Shots:
Ground Balls:
Draw Controls:
Caused Turnovers:

SEASON HIGHS

Points:
Goals:
Assists:
Shots:
Ground Balls:
Draw Controls:
Caused Turnovers:



SHAE INSINGA

43

GRADUATE STUDENT • MIDFIELD

5-5 • WANTAGH, N.Y. / WANTAGH (SACRED HEART)

CAREER STATISTICS

YEAR	GP-GS	G	A	Pts	Sh	UP	GB	TO	CT	DC	RC-YC-GC
2022 (at SHU)	4-0	0	0	0	0	0	0	0	0	3	0-0-0
2023 (at SHU)	18-0	8	1	9	18	0	3	11	0	0	0-2-0
2024 (at SHU)	17-17	26	5	31	51	5	14	20	3	45	0-4-6
2025 (at SHU)	16-15	28	5	33	80	1	5	29	5	45	0-3-9
2026	0-0	0	0	0	0	0	0	0	0	0	0-0-0
Total	55-32	62	11	73	149	6	22	60	8	93	0-9-15

CAREER HIGHS

Points:
Goals:
Assists:
Shots:
Ground Balls:
Draw Controls:
Caused Turnovers:

SEASON HIGHS

Points:
Goals:
Assists:
Shots:
Ground Balls:
Draw Controls:
Caused Turnovers:



BELLA RAYNISH

41

SOPHOMORE • ATTACK

5-7 • ORCHARD LAKE, MICH. / ST. MARY'S (CENTRAL MICHIGAN)

CAREER STATISTICS

YEAR	GP-GS	G	A	Pts	Sh	UP	GB	TO	CT	DC	RC-YC-GC
2025 (at CMU)	0-0	0	0	0	0	0	0	0	0	0	0-0-0
2026	0-0	0	0	0	0	0	0	0	0	0	0-0-0
Total	0-0	0	0	0	0	0	0	0	0	0	0-0-0

CAREER HIGHS

Points:
Goals:
Assists:
Shots:
Ground Balls:
Draw Controls:
Caused Turnovers:

SEASON HIGHS

Points:
Goals:
Assists:
Shots:
Ground Balls:
Draw Controls:
Caused Turnovers:



JULIETTE OGREN

45

FRESHMAN • DEFENSE

5-2 • HOLLIS, N.H. / HOLLIS BROOKLINE

CAREER STATISTICS

YEAR	GP-GS	G	A	Pts	Sh	UP	GB	TO	CT	DC	RC-YC-GC
2026	0-0	0	0	0	0	0	0	0	0	0	0-0-0
Total	0-0	0	0	0	0	0	0	0	0	0	0-0-0

CAREER HIGHS

Points:
Goals:
Assists:
Shots:
Ground Balls:
Draw Controls:
Caused Turnovers:

SEASON HIGHS

Points:
Goals:
Assists:
Shots:
Ground Balls:
Draw Controls:
Caused Turnovers:



MADIGAN BREWER

55

JUNIOR • GOALIE

5-5 • DAVIDSONVILLE, MD. / ST. MARY'S / UMBC

CAREER STATISTICS

YEAR	GP-GS	G	A	Pts	Sh	UP	GB	TO	CT	DC	RC-YC-GC
2023 (at UMBC)	0-0	0	0	0	0	0	0	0	0	0	0-0-0
2024 (at UMBC)	0-0	0	0	0	0	0	0	0	0	0	0-0-0
2025	16-12	0	0	0	0	0	14	7	3	0	0-0-0
2026	0-0	0	0	0	0	0	0	0	0	0	0-0-0
Total	16-12	0	0	0	0	0	14	7	3	0	0-0-0

CAREER GOALKEEPING STATISTICS

YEAR	GP-GS	Minutes	GA	GAA	Saves	Save%	W	L	T	Sho
2023 (at UMBC)	0-0	0:00	0	0.00	0	.000	0	0	0	0
2024 (at UMBC)	0-0	0:00	0	0.00	0	.000	0	0	0	0
2025	16-12	604:11	99	9.83	72	.421	11	1	0	0
2026	0-0	0:00	0	0.00	0	.000	0	0	0	0
Total	16-12	604:11	99	9.83	72	.421	11	1	0	0

CAREER HIGHS

Saves: 11, at Kennesaw State, 2/22/25

Ground Balls: 3, at High Point, 4/4/25

Caused Turnovers: 1, 3 times

SEASON HIGHS

Saves:

Ground Balls:

Caused Turnovers:



SAM MELVILLE

88

FRESHMAN • GOALIE

5-6 • NORTH ANDOVER, MASS. / NORTH ANDOVER

CAREER STATISTICS

YEAR	GP-GS	G	A	Pts	Sh	UP	GB	TO	CT	DC	RC-YC-GC
2025	2-0	0	0	0	0	0	0	0	0	0	0-0-0
Total	2-0	0	0	0	0	0	0	0	0	0	0-0-0

CAREER GOALKEEPING STATISTICS

YEAR	GP-GS	Minutes	GA	GAA	Saves	Save%	W	L	T	Sho
2025	2-0	30:00	3	6.00	2	.400	0	0	0	0
Total	2-0	30:00	3	6.00	2	.400	0	0	0	0

CAREER HIGHS

Saves: N/A

Ground Balls: N/A

Caused Turnovers: N/A

SEASON HIGHS

Saves:

Ground Balls:

Caused Turnovers: