



MATCH NOTES

CLEMSON VOLLEYBALL

#OWNTODAY

Match 31-32: Clemson vs. Syracuse & Florida State
November 25-28, 2025 • Clemson, S.C. • Tallahassee, Fla.

2025 SCHEDULE & RESULTS

Date	Opponent	WATCH	Time/Result
Fri., Aug. 29	# vs. Campbell	N/A	W, 3-0
Sat., Aug. 30	# vs. East Tennessee State	N/A	W, 3-0
Sun., Aug. 31	# at South Carolina	SEC+	W, 3-2
Thu., Sept. 4	North Carolina A&T	ACCNX	W, 3-1
Fri., Sept. 5	North Carolina A&T	ACCNX	W, 3-1
Tue., Sept. 9	& Georgia	ACCNX	W, 3-1
Thu., Sept. 11	\$ Elon	ACCNX	W, 3-0
Fri., Sept. 12	\$ USC Upstate	ACCNX	W, 3-1
Sat., Sept. 13	\$ Wofford	ACCNX	W, 3-2
Thu., Sept. 18	^ Georgetown	ACCNX	W, 3-2
Fri., Sept. 19	^ Norfolk State	ACCNX	W, 3-1
Fri., Sept. 19	^ Charleston Southern	ACCNX	W, 3-1
Fri., Sept. 26	* Florida State	ACCNX	L, 1-3
Sun., Sept. 28	* No. 24 Miami (Fla.)	ACCNX	L, 0-3
Fri., Oct. 3	* at No. 5 Pitt	ACCNX	L, 0-3
Sun., Oct. 5	* at No. 11 SMU	ACCNX	L, 0-3
Fri., Oct. 10	* No. 23 North Carolina	ACCNX	L, 0-3
Sun., Oct. 12	* Duke	ACCNX	L, 0-3
Fri., Oct. 17	* at NC State	ACCNX	L, 1-3
Sun., Oct. 19	* at Wake Forest	ACCNX	L, 0-3
Fri., Oct. 24	* No. 5 Stanford	ACCNX	L, 1-3
Sun., Oct. 26	* California	ACCNX	W, 3-0
Fri., Oct. 31	* at Virginia Tech	ACCNX	L, 1-3
Sun., Nov. 2	* at Virginia	ACCNX	W, 3-1
Fri., Nov. 7	* at Syracuse	ACCNX	W, 3-1
Sun., Nov. 9	* at Boston College	ACCNX	W, 3-0
Wed., Nov. 12	* Georgia Tech	ACC Network	L, 0-3
Fri., Nov. 14	* at Georgia Tech	ACCNX	L, 0-3
Fri., Nov. 21	* Notre Dame	ACCNX	L, 2-3
Sun., Nov. 23	* No. 7 Louisville	ACC Network	L, 0-3
Tue., Nov. 25	* Syracuse	ACCNX	2 p.m.
Fri., Nov. 28	* at Florida State	ACCNX	2 p.m.

Bold indicates home match at Jervy Gym

- Columbia, S.C. - South Carolina Tournament, & - SEC/ACC Challenge, \$ - Clemson/Wofford Tournament,

^ - Big Orange Bash, * - ACC match

PROGRAM HISTORY

PROGRAM HISTORY

First Year of Volleyball	1977
All-Time Record	936-732
All-Time Record in Jervy Gym	440-239
All-Time ACC Record (34 Years)	298-367
Last NCAA Tournament Appearance	2009
NCAA Tournament Appearances	8 (1993, 1994, 1997, 1998, 1999, 2007, 2008, 2009)
Last NIVC Tournament Appearance	2023
NIVC Tournament Appearances	3 (2018, 2022, 2023)
ACC Regular-Season Championships	2 (1997, 2007)
ACC Tournament Championships	1 (1997)

STATISTICAL LEADERS

CATEGORY	NAMES	No.
Points	Mia McGrath	356.5
Attacks	Mia McGrath	1062
Kills	Mia McGrath	306
Kills per Set	Mia McGrath	2.83
Hitting Percentage	Kate Hansen	.326
Assists	Katherine Sandt	1015
Assists Per Set	Katherine Sandt	9.49
Service Aces	Katherine Sandt	29
Service Aces Per Set	Katherine Sandt	0.27
Digs	McKenna Gildon	425
Digs Per Set	McKenna Gildon	3.90
Blocks	Nil Okur	87
Blocks Per Set	Nil Okur	0.88

*Minimum 50% of teams set played required

CLEMSON

Record:	16-14
Home:	10-8
Away:	3-6
Neutral:	2-0
Non-Conf.:	12-0
ACC:	4-14

Head Coach: Jackie Simpson Kirr || 5th season

at Clemson: 71-84

Total (7th season): 88-123

Assoc. HC: Taylor Unroe || 5th season

Asst. Coach: Moneshia McKenney || 1st season

Asst. Coach: Haley Bilbruck || 5th season

Dir. of Ops: Nicole Willis || 1st season

SYRACUSE SERIES

CU Record	6-13
Last Meeting	11/7/25
	W, 3-1
at Home	11/17/24
	W, 3-0
Trend	W3

FSU SERIES

CU Record	20-45
Last Meeting	9/26/25
	L, 1-3
on the Road	11/24/24
	L, 2-3
Trend	L20

SYRACUSE

Record:	13-15
Away:	4-7
ACC:	5-13
Head Coach:	Bakeer Ganesharatnam
at Syracuse:	41-75
Total:	214-219

FLORIDA STATE

Record:	16-11
Home:	8-3
ACC:	10-8
Head Coach:	Chris Poole
at FSU:	405-146
Total:	955-376

NEED TO KNOW

MAC ATTACK

- Senior pin attacker Mia McGrath became the first Clemson player since 2022 to surpass 1,000 career points as a Tiger during their collegiate tenure
- Entering the Stanford match on Oct. 24 needing only three points, she reached the milestone following two solo blocks and one kill before ending the night with 16.5 total points
- Heading into the final weekend of 2025, McGrath has 1,116 career points (2.50 per set) behind 949 kills, 98 aces and 109 total blocks (29 solo, 80 assisted)
- Nearing the 1,000 mark in multiple categories, she also is on pace to reach become the first Tiger since Devan Taylor and McKenna Slavik to surpass 1,000 career digs as she sits with 983 heading into the weekend
- In 2025, she leads the team in total attacks (1062), is second in aces (24) and third in both digs (259) and blocks (42)
- Excelling on and off the field, McGrath is one of two new cohosts on Beyond the Paw, a Clemson Plus podcast dedicated to sharing the stories of athletes away from the field of play, and an On-Air Intern with the Tiger Pregame Show on Saturday's before Clemson football games with Kennedy Wagner. She has aspirations of becoming a sports broadcaster once her playing career concludes

MIDDLE HITTERS

- Clemson brings power in the middle of the court with its four middle hitters: Kate Hansen, Bianca Martinez, Nil Okur and Kate Simington
- The group of four have appeared in at least 20 sets each with Hansen and Okur leading the way with 99 each
- A dynamic group offensively, Hansen averages 2.20 kills per set while Martinez (1.60), Simington (1.50) and Okur (1.28) follow
- Providing height at the net, the group has combined for 196 blocks (29 solo, 167 assisted)
- Okur leads the way with 87 blocks (0.88 per set) that includes 10 solo and 77 assisted. Hansen follows with 78 (0.79 per set) with 13 solo and 65 assisted
- On their careers, Hansen maintains a 0.93 per set pace with 270 total blocks (52 solo, 218 assisted), and Okur follows with a 0.87 pace (233 total - 23 solo, 210 assisted)

SETTING THINGS UP

- Redshirt sophomore Katherine Sandt has found her groove in her second year as the starting setter
- Training at the same club as former Clemson five-year setter McKenna Slavik (2019-23), Sandt took over the 'quarterback' reigns for the Tigers in 2024
- Averaging only 7.74 assists per set last season, Sandt has bumped her pace to 9.49 a/s in 2025
- She surpassed 1,000 career assists early in 2025 during the USC Upstate match and now sits 303 assists away from cracking Clemson's career Top 10 list for the category (10. Courtney Lawrence, 2004-07 - 2,053)
- Not only has she been able to dish out assists, Sandt is second on the team in digs (298) while also contributing 37 blocks, 59 kills and a team-high 29 aces
- The redshirt sophomore has clocked over 40+ assists in 10 matches this season and a double-double in 15

CAN YOU DIG IT?

- For the fourth-straight season, Clemson sits among the top third of the ACC in both total digs and digs per set
- Entering the final week of matches, Clemson leads the conference with 1,672 total digs and a 15.34 per set pace, both of which rank within the top 75 on the NCAA list (74th total digs; 65th in digs per set)
- Leading the way for the Tigers is junior libero McKenna Gildon with a 3.90 per set pace (425 total) in her first year as the starting libero. Gildon is in the top five in the ACC in total digs and digs per set
- Joining her on the back line include sophomores Addi Rains (2.03 per set) and Claire Luoma (1.83)
- Helping to keep the pace are six-rotation players Katherine Sandt (2.79 per set) and Mia McGrath (2.40) who have 298 and 259 total digs on the year, respectively
- The defensive efforts are led by Associate Head Coach Taylor Unroe, a former SEC Libero of the Year and AVCA All-America Honorable Mention in 2013 at Florida

PLAYERS

2



KENNEDY WAGNER

Jr. • PIN • 6-0 • Valparaiso, Ind. • Valparaiso HS

	SP	Kills	K/Set	Digs	Blocks	PTS
2025	54	208	3.85	46	26	232.5
Career	196	558	2.85	212	69	648.5

Season Highs: 22 kills, 2 aces, 7 digs (2x), 5 blocks

- Finished with a career-high 22 kills vs. Florida State
- Tallied 20 kills vs. NC A&T
- Led team with 16 kills and 5 blocks vs. Georgia
- Clocked 2 solo blocks and 1 assisted with 11 kills vs. NC A&T in home opener
- Recorded 19 kills at South Carolina & vs. Wofford
- Had double-digit kills in 12 matches this season
- Gamecock Classic All-Tournament Team

6



KATHERINE SANDT

RSO. • S • 6-0 • Western Springs, Ill. • Nazareth Academy

	SP	Assists	A/Set	Kills	Digs	PTS
2025	107	1015	9.49	59	298	109
Career	202	1750	8.66	100	508	186.5

Season Highs: 52 assists, 6 kills, 22 digs, 4 aces

- Recorded 52 assists, 10 digs and 3 blocks against Georgetown
- Had a season-high 22 digs & 49 assists vs. Wofford
- Clocked 40 assists and 18 digs with 2 aces vs. USC Upstate
- Finished with 47 assists at South Carolina & vs. Florida State
- Has 15 double-doubles this season
- Big Orange Bash All-Tourney Team and Setter of the Tournament
- Recorded a career-high 63 assists and 12 digs at Georgia Tech (2024)

8



KYAHA GORDON

Jr. • PIN • 6-0 • Belize City, Belize • Navarro College

	SP	Kills	K/Set	Digs	Blocks	PTS
2025	42	98	2.33	22	15	107.5
Career	42	98	2.33	22	15	107.5

Season Highs: 18 kills, 4 digs, 1 ace, 3 blocks (2x)

- Made Clemson debut vs. NC A&T
- Had 4 kills, 2 digs and 1 blocks vs. Norfolk State
- Recorded 16 kills and two blocks at Virginia
- Finished with 18 kills at Syracuse
- Notched nine kills, three blocks and one dig at Boston College
- Transferred from Navarro College - joined team in January 2025
- Four-time medalist with the Belize National Team

9



KATIE HURTA

RJr. • PIN • 6-1 • Palos Hills, Ill. • Penn State

	SP	Kills	K/Set	Digs	Blocks	PTS
2025	24	37	1.54	23	11	43
Career	107	192	1.79	72	34	212

Season Highs: 10 kills, 4 blocks, 7 digs (2x), 11 assists

- Recorded four blocks against Florida State
- Finished with 11 assists and 7 digs vs. UNC
- Clocked 10 kills, 5 assists, 7 digs and 1 block vs. Duke
- Tallied 8 kills and 1 block at NC State
- Appeared in 4 matches in 2024 - missed rest of season due to injury
- Gators Invitational & Tulane Invitational All-Tournament Team (2023)
- Led Tigers with 19 kills against Sacramento State (2023)

10



NIL OKUR

Sr. • MH • 6-0 • Istanbul, Turkiye • Michigan State

	SP	Kills	K/Set	Blocks	Blk/Set	PTS
2025	99	127	1.28	87	0.88	175.5
Career	267	356	1.33	233	0.87	512

Season Highs: 14 kills, 5 digs, 6 blocks (3x), 17.5 points

- Tallied career-high 14 kills at Syracuse & added 6 blocks
- Recorded 6 blocks and 5 kills vs. North Carolina
- Finished with 9 kills and 4 blocks against USC Upstate
- Notched 5 blocks and 3 kills at Wake Forest
- Transferred from Michigan State - joined team in January 2025
- Tallied a career-high 8 blocks at Navy
- Recorded 13 kills at Indiana to contribute to 17.5 total points

11



ADDI RAINS

So. • L • 5-5 • Yorktown, Ind. • Yorktown HS

	SP	Digs	D/Set	Assists	Aces	PTS
2025	106	215	2.03	28	20	20
Career	200	376	1.88	43	23	25

Season Highs: 3 assists (2x), 18 digs, 6 aces

- Joined Clemson's Top 10 list with 6 aces vs. Elon
- Tallied a career-high 18 digs vs. Georgia
- Clocked 11 digs and 1 ace vs. Duke & at Virginia
- Notched 12 digs at Wake Forest & at Virginia Tech
- Has double-digit digs in 9 matches in 2025
- Recorded 10 digs at Georgia Tech and vs. Wake Forest (2024)
- Finished her freshman campaign with 161 digs

12



CLAIRE LUOMA

So. • L • 5-7 • Franklin, Wis. • Franklin HS

	SP	Digs	D/Set	Assists	Aces	PTS
2025	103	189	1.83	18	21	21
Career	154	267	1.73	27	29	29

Season Highs: 3 assists (2x), 2 aces (4x), 13 digs

- Finished with a season-high 13 digs at Virginia Tech
- Recorded 11 digs against Charleston Southern & Wofford
- Tallied 2 aces and 10 digs against Campbell
- Notched 10 digs and 1 ace at South Carolina
- Tallied 12 digs at Georgia Southern (2024)
- Recorded 11 digs and 2 aces vs. Kennesaw State (2024)
- Opened the season with 4 aces and 4 digs vs. Loyola Chicago (2024)

14



AUDREY ARMBRUSTER

Jr. • S • 5-11 • Cincinnati, Ohio • Mount Notre Dame

	SP	Assists	A/Set	Kills	Digs	PTS
2025	7	34	4.86	1	12	1
Career	73	396	5.42	11	124	24

Season Highs: 14 assists, 1 kill, 3 digs

- Had 9 assists and 3 digs vs. Elon
- Recorded 14 assists and 2 digs in the second game vs. NC A&T
- Tallied 1 assist in 1 set of action vs. ETSU
- Finished with a career-high 51 assists vs. Wofford (2024)
- Had four double-doubles during the 2024 season
- Recorded a season-high 15 digs against Kennesaw State (2024)
- Finished with 10 digs and 9 assists at Notre Dame (2024)

PLAYERS

15



KATE SIMINGTON

Jr. • MH • 6-4 • Excelsior, Minn. • Minnetonka, HS

	SP	Kills	K/Set	Blocks	Blk/Set	PTS
2025	24	36	1.50	19	0.79	49
Career	142	202	1.42	100	0.70	262

Season Highs: 6 kills (2x), 3 digs, 4 blocks

- Clocked 3 blocks in matches against UNC and Duke
- Recorded 4 blocks and two kills at Pitt
- Had 6 kills and 3 blocks against Florida State
- Finished with 3 kills and 1 block vs. Elon & Norfolk State
- Tallied 6 kills in first game against NC A&T
- Appeared in 5 matches, starting 1 in 2024 after returning from injury
- Clocked at least 1 block in 29 matches during the 2023 season

16



ECEM AKSOY

Fr. • PIN • 5-11 • Izmir, Turkiye • Doga Koleji

	SP	Kills	K/Set	Digs	Blocks	PTS
2025	20	47	2.35	7	7	51.5
Career	20	47	2.35	7	7	51.5

Season Highs: 10 kills, 1 assist (2x), 2 dig, 2 blocks (3x)

- Finished with 10 kills and 1 solo block vs. Stanford
- Had 8 kills, 2 blocks and 1 dig vs. Elon
- Clocked 8 kills, 2 digs and 2 blocks vs. California
- Made Clemson debut in first game against NC A&T
- 2024 U-19 Turkish National Team Training Invitee
- Second place at 2024 Junior Turkish National Championships
- 2024 High School Turkish National Champions

19



KATE HANSEN

Jr. • MH • 6-3 • Weatherford, Texas • Texas Tech

	SP	Kills	K/Set	Blocks	Blk/Set	PTS
2025	99	218	2.20	78	0.79	278.5
Career	289	446	1.54	270	0.93	649

Season Highs: 14 kills, 2 aces (2x), 7 digs, 7 blocks

- Finished with a career high against Georgetown with 14 kills, 7 blocks & 2 aces
- Had 11 kills, 5 digs, 2 blocks and 1 ace vs. Wofford
- Recorded 9 kills, 3 digs and 6 blocks vs. California
- Had 11 kills vs. ETSU & Wofford
- Finished with 5 blocks, 8 kills and 6 digs at South Carolina
- Gamecock Classic All-Tournament Team & Big Orange Bash MVP
- Led the team with 93 blocks (19 solo, 74 assisted) for a 0.83 blk/set avg. (2024)

22



MIA MOORE

Sr. • PIN • 6-0 • Frisco, Texas • Frisco Heritage HS

	SP	Kills	K/Set	Digs	Blocks	PTS
2025	87	220	2.53	48	38	239.5
Career	141	307	2.18	79	60	339

Season Highs: 17 kills, 5 digs (2x), 5 blocks

- Recorded 17 kills and 5 blocks at Syracuse
- Had 7 kills, 5 digs and 2 blocks vs. Wofford
- Notched 15 kills and 5 digs vs. Georgia
- Finished with 7 kills and 3 digs in the first game against NC A&T
- Recorded 12 kills at South Carolina with 2 blocks
- Tallied 10 kills with 6 digs & 3 blocks vs. No. 25 North Carolina (2024)
- 2024-25 Member of POWER - Clemson's women's empowerment organization

23



MIA McGRATH

Sr. • PIN • 5-11 • Deerfield, Ill. • Loyola Academy

	SP	Kills	K/Set	Digs	Blocks	PTS
2025	108	306	2.83	259	42	356.5
Career	447	949	2.12	983	109	1116

Season Highs: 21 kills, 4 aces, 19 digs, 4 blocks (3x)

- Surpassed 1,000 career points vs. Stanford
- Had 21 kills, 9 digs, 3 blocks and 1 ace vs. Wofford
- Notched 19 digs and 14 kills with 4 aces vs. Georgia
- Gamecock Classic All-Tournament MVP & Big Orange Bash All-Tourney Team
- Clocked a career-high 23 kills and added 3 aces against Wofford (2024)
- Finished with a career-high 20 digs, 14 kills and 3 solo blocks at WMU (2024)
- ACC Student Athlete Advisory Committee & Co-host of Beyond the Paw Podcast

24



BIANCA MARTINEZ

Sr. • MH • 6-2 • Omaha, Neb. • Cal State Fullerton

	SP	Kills	K/Set	Blocks	Blk/Set	PTS
2025	20	32	1.60	12	0.60	41.5
Career	322	520	1.61	265	0.82	678

Season Highs: 5 kills (2x), 2 digs, 3 blocks

- Recorded 3 blocks and 4 kills vs. Duke
- Had 4 kills and 1 solo block vs. USC Upstate
- Finished with 5 kills and 1 solo block in second game vs. NC A&T
- Transferred from Cal State Fullerton - joined team in January 2025
- 2022 Big West All-Freshman Team
- Clocked 645 points to average 2.11 per set in 3 years at Cal State Fullerton
- Finished with 257 total blocks, including 45 solo blocks

28



McKENNA GILDON

Jr. • L • 5-10 • Plano, Texas • Liberty HS

	SP	Digs	D/Set	Assists	Aces	PTS
2025	109	425	3.90	132	16	17
Career	293	722	2.46	175	51	53

Season Highs: 11 assists, 2 aces, 26 digs

- Big Orange Bash All-Tournament Team
- Recorded a career-high 26 digs against Charleston Southern
- Had 24 digs and 9 assists vs. Wofford
- Tallied 23 digs vs. NC A&T & 25 vs. Florida State
- Recorded 20 digs against Stanford
- Clocked double-digit digs in 22 matches this season
- Finished with 10 digs vs. Wake Forest, NC State and BC (2024)

PROGRAM FACTS

Nickname	Tigers
Location	Clemson, S.C.
Colors	Tiger Orange & Regalia
Founded	1889
Enrollment	29,077
President	Dr. James P. Clements (UMBC '85)
Director of Athletics	Graham Neff (Georgia Tech '06)
Facility/Capacity	Jervy Gym (1,500)

OWN TODAY • Tomorrow's success is built on how we show up today.

GRATITUDE • GRIT • GRACE

GRATITUDE recognizes and appreciates the good, even in hard moments. It's a mindset that fuels positivity, respects the process, and keeps us grounded as we pursue excellence.

GRIT is the drive to keep going through adversity, the resilience to push forward when you feel stuck, and the toughness to never back down.

GRACE leads with purpose, lifts others up, and strengthens our connection. It helps us hold ourselves accountable with humility and respect. Grace isn't soft, it's high standards with heart.

QUICK FACTS

MEDIA SERVICES

CLEMSON ATHLETIC COMMUNICATIONS

Volleyball Contact	Andrew Fostvelt (Texas Tech '23)
Email	rfostve@clemson.edu
Phone	512-426-2948
Volleyball Oversight	Valerie Johnson (Central Michigan '18)
Email	vjohns4@clemson.edu
Phone	712-269-4149
Assoc. AD - Communications	Jeff Kallin (Clemson '06)
Email	kallin@clemson.edu

CLEMSON ATHLETICS

Website	ClemsonTigers.com
IPTAY Office Phone	1-800-CLEMSON
Social Media	@ClemsonVB (X)
	@ClemsonVB (Instagram)
	@ClemsonVolleyball (Facebook)
	@ClemsonTigers (Main Athletics)

ACC MEDIA RELATIONS

Bailey Grossetti is the volleyball athletic communications contact at the ACC office. She can be reached via email at bgrossetti@theacc.org.

INTERVIEW

Interviews are available by request with select players and **Head Coach Jackie Simpson Kirr**. Contact **Andrew Fostvelt** via phone or email to coordinate all interview requests. Players are available at the discretion of the women's volleyball staff upon request.

MORE INFORMATION



2025 ACC STANDINGS

SCHOOL	CONF	CPCT.	OVERALL	PCT.	STREAK
Stanford	16-2	.889	25-4	.862	W2
Louisville	16-2	.889	24-4	.857	W10
Pitt	16-2	.889	24-4	.857	W3
SMU	15-3	.833	23-5	.821	W7
Miami	14-4	.778	24-5	.828	W2
North Carolina	13-5	.722	20-7	.741	L2
Georgia Tech	11-7	.611	16-11	.593	W1
Florida State	10-8	.556	16-11	.593	W3
NC State	8-10	.444	15-13	.536	W4
Wake Forest	8-10	.444	14-15	.483	L1
Notre Dame	7-11	.389	10-16	.385	L1
Boston College	5-13	.278	16-14	.533	L5
Syracuse	5-13	.278	13-15	.464	L9
Virginia	5-13	.278	12-16	.429	W1
Clemson	4-14	.222	16-14	.533	L4
California	4-14	.222	7-21	.250	L5
Virginia Tech	3-15	.167	11-18	.379	L3
Duke	2-16	.111	5-24	.172	L12

MILESTONES

UPCOMING MILESTONES	HAS	NEEDS
McKenna Gildon 800 digs	722	78
Khaya Gordon 100 kills	98	2
Kate Hansen 300 blocks	270	30
Katie Hurta 200 kills	192	8
Claire Luoma 300 digs	267	33
Bianca Martinez 700 points	678	22
Mia McGrath 1000 kills	949	51
Mia McGrath 100 aces	98	2
Mia McGrath 1,000 digs	983	17
Mia Moore 400 kills	307	93
Nil Okur 250 blocks	233	17
Nil Okur 400 kills	356	44
Addi Rains 400 digs	376	24
Katherine Sandt 2,000 assists	1,750	250
Katherine Sandt 600 digs	508	92
Katherine Sandt 200 points	186.5	13.5

CLEMSON ON PAPER

Statistics: As of Nov. 24

	National Rank	Conference Rank	Value
Aces Per Set (343 ranked)	293	16	1.24
Assists Per Set (343 ranked)	130	9	11.97
Blocks Per Set (342 ranked)	204	16	2.00
Digs Per Set (343 ranked)	65	1	15.34
Hitting Percentage (343 ranked)	176	11	.211
Kills Per Set (343 ranked)	156	10	12.75
Match W-L Pctg. (342 ranked)	158	10	.533
Opp Hitting Percentage (343 ranked)			
Team Assists (343 ranked)	115	6	1,305
Team Attacks Per Set (343 ranked)	91	4	35.62
Team Digs (343 ranked)	74	1	1,672
Team Kills (343 ranked)	133	7	1,390
Team Service Aces (343 ranked)	261	16	135
Team Total Attacks (343 ranked)	101	2	3,883
Team Total Blocks (343 ranked)	193	16	218

CLEMSON'S 2025 RECORD WHEN...

LOCATION	Overall	ACC
Home	10-8	1-8
Away	4-6	3-6
Neutral	2-0	0-0
RANKING		
vs. Ranked Opponent	0-6	0-6
MATCH LENGTH		
3-Set Matches	6-9	2-9
4-Set Matches	6-4	2-4
5-Set Matches	4-1	0-1
STATISTICAL LEADERS		
CU hits .250 or better	12-0	3-0
CU hits below .250	4-14	1-14
Opp. hits .250 or better	0-10	0-10
Opp. hits below .250	16-4	4-4
CU has higher attack %	16-1	4-1
CU has lower attack %	0-13	0-13
Teams have same attack %	0-0	0-0
CU has more kills	15-0	4-0
CU has fewer kills	1-14	0-14
Same number of kills	0-0	0-0
3 players with 10+ kills	10-1	3-1
3 players hit .300+ (min. 10 attempts)	8-0	2-0
CU hits 30+ kills	16-9	4-9
CU allows 30+ kills	14-12	4-12
CU has more aces	12-4	3-4
CU has fewer aces	2-8	1-8
Same number of aces	2-2	0-2
CU has more digs	13-0	2-0
CU has fewer digs	3-13	2-13
Same number of digs	0-1	0-1
CU has more blocks	9-1	3-1
CU has fewer blocks	6-10	1-10
Same number of blocks	1-3	0-3

HEAD COACH JACKIE SIMPSON KIRR



SIMPSON KIRR FILE

Education: Wisconsin (UG - 2008) || East Carolina (Masters - 2013)
Years at Clemson: Total - 9
 - 5 as Head Coach (2021-Pres.)
 - 4 as Associate Head Coach/Recruiting Coordinator (2017-20)
 - Joined Clemson staff in 2017
Record as a Head Coach: 88-123 (seventh season as HC)
 - Clemson: 71-84
 - George Mason: 17-39
Family:
 - Jordy Kirr (Wife)
 - Jackson (Son)
 - Besser (Daughter)

JERVEY GYM FILE

AGAINST ALL OPPONENTS IN JERVEY TEAM RECORDS (ALL TIME)

Category	No.	Opponent	Date
Kills	93	Florida State	10/11/1996
	93	Maryland	11/17/2006
Attacks	282	Maryland	11/08/1986
Hitting %	.563	Charleston Southern	09/20/1996
Service Aces	26	Augusta College	09/05/1989
Block Solos	18	Middle Tennessee	09/21/1991
Block Assists	34	Duke	09/25/2010
Assists	94	Florida State	10/11/1996
Digs	149	Maryland	11/08/1986

INDIVIDUAL RECORDS (ALL TIME)

Category	No.	Name	Opponent	Date
Kills	32	Robin Kibben	Auburn	09/11/93
	32	Julie Rodriguez	Florida State	10/11/96
	32	Brittany Ross	Georgia Tech	11/15/05
Attacks	84	Leah Perri	Wake Forest	11/06/15
Hitting %	.923	Kristin Swanson	Wofford	09/18/02
(Minimum of 10 Total Attempts)				
Service Aces	10	Joy Fleming	Virginia	10/18/85
Block Solos	7	Wendy Anderson	North Carolina	10/17/86
	7	Joy Fleming	Charlotte	11/11/86
Block Assists	13	Alexa Rand	Duke	09/25/10
Assists	86	Michelle Thieke	Florida State	10/11/96
Digs	35	Anna Vallinch	North Carolina	09/25/04

TOP 10 JERVEY ATTENDANCE RECORDS UNDER SIMPSON KIRR

Rank	No.	Opponent	Result	Score	Date
1.	1,500	* Louisville	L	0-3	11/24/25
	1,500	* Florida State	L	1-3	9/26/25
	1,500	South Carolina	L	0-3	9/24/24
4.	1,393+	* NC State	L	0-3	9/22/23
5.	1,360+	* Louisville	L	1-3	11/5/23
6.	1,320	* Miami (Fla.)	L	0-3	9/28/25
7.	1,314	* North Carolina	L	0-3	10/10/25
8.	1,295	NC A&T	W	3-1	9/5/25
9.	1,294+	Middle Tennessee	W	3-1	8/25/23
10.	1,242+	* Notre Dame	W	3-1	11/3/23

Note: Attendance figures are estimates

* - Denotes ACC match; + - Denotes Jervy Gym prior to renovations

2025 COACHING STAFF

TAYLOR UNROE

Associate Head Coach || Defensive Coordinator

Years at Clemson: 5 - joined staff in 2021

Education: Florida (2014)

Notes:

- Lead coach for first contact, Clemson's defensive efforts and serve-receive
- Guided Devan Taylor (2021-24) to second-most digs in Clemson program history
- SEC Libero of the Year & AVCA All-America Honorable Mention (2013)
- Two-time SEC Champion & four NCAA appearances at Florida
- Previously worked with Simpson Kirr at George Mason (2015-16) where she was the defensive coordinator



MO McKENNEY

Assistant Coach || Recruiting Coordinator

Years at Clemson: 1 - joined staff in 2025

Education: Clemson (2014)

Notes:

- Serves as the offensive analyst & lead coach for attacking
- Builds Clemson VB on Simpson Kirr's "Own Today" vision & is the connection between Clemson VB IPTAY to grown alumni and ACEs Club network
- AVCA All-American & First Team All-ACC selection as a Tiger
- One of five athletes in Clemson's records with over 500 kills, 1,000 digs and 200 blocks



HALEY BILBRUCK

Assistant Coach || Player Development

Years at Clemson: 5 - joined staff in 2021; First season as an assistant coach (DOVO 2021-24)

Education: Southeast Missouri State (2019)

Notes:

- Lead coach for blocking efforts & works alongside Unroe on defensive efforts
- Manages player development & serves as technical coordinator
- Focus on developing comprehensive reports for individual player improvement
- Second Team All-Ohio Valley selection



NICOLE WILLIS

Director of Volleyball Operations

Years at Clemson: 1 - joined staff in 2025

Education: East Carolina (2014)

Notes:

- Manages team travel & equipment
- All-Conference right side for the Pirates
- Was a player for Simpson Kirr at ECU during Simpson Kirr's first D1 coaching role



2025 ROSTER

NUMERICAL

#	Player	Pos.	Yr.	Ht.	Hometown	Previous School / High School
2	Kennedy Wagner	PIN	Jr.	6-0	Valparaiso, Ind.	Valparaiso HS
6	Katherine Sandt	S	*So.	6-0	Western Springs, Ill.	Nazareth Academy
8	Khaya Gordon	PIN	Jr.	6-0	Belize City, Belize	Navarro College / Saint Catherine Academy
9	Katie Hurta	PIN	*Jr.	6-1	Palos Hills, Ill.	Penn State / Nazareth Academy
10	Nil Okur	MH	Gr.	6-0	Istanbul, Turkiye	Michigan State / Ozel Sezin Okullari
11	Addi Rains	L	So.	5-5	Yorktown, Ind.	Yorktown HS
12	Claire Luoma	L	So.	5-7	Franklin, Wis.	Franklin HS
14	Audrey Armbruster	S	Jr.	5-11	Cincinnati, Ohio	Mount Notre Dame
15	Kate Simington	MH	Jr.	6-4	Excelsior, Minn.	Minnetonka HS
16	Ecem Aksoy	PIN	Fr.	5-11	Izmir, Turkiye	Doga Koleji
19	Kate Hansen	MH	Jr.	6-3	Weatherford, Texas	Texas Tech / Weatherford HS
22	Mia Moore	PIN	Sr.	6-0	Frisco, Texas	Frisco Heritage HS
23	Mia McGrath	PIN	Sr.	5-11	Deerfield, Ill.	Loyola Academy
24	Bianca Martinez	MH	Sr.	6-2	Omaha, Neb.	Cal State Fullerton / Omaha Central HS
28	McKenna Gildon	L	Jr.	5-10	Plano, Texas	Liberty HS

* - one redshirt

Head Coach:

Associate Head Coach:

Assistant Coach:

Assistant Coach:

Director of Operations:

Jackie Simpson Kirr (5th season • Wisconsin '08)

Taylor Unroe (5th season • Florida '14)

Mo McKenney (1st season • Clemson '14)

Haley Bilbruck (5th season • Southeast Missouri State '19)

Nicole Willis (1st season • East Carolina '14)

PRONUNCIATIONS

#	Name	Pronunciation
6	Katherine Sandt	SANT
8	Khaya Gordon	KIE-uh
10	Nil Okur	nill OH-kerr
12	Claire Luoma	LOO-muh
14	Audrey Armbruster	ARM-broo-ster
15	Kate Simington	SIGH-ming-tin
16	Ecem Aksoy	eh-JEM AHK-soy
28	McKenna Gildon	gill - DON

Jackie Simpson **Kirr** KEER

To hear pronunciations, visit the roster page on ClemsonTigers.com or use the QR code below



2

KENNEDY WAGNER
Jr. | PIN | 6-0



6

KATHERINE SANDT
RSo. | S | 6-0



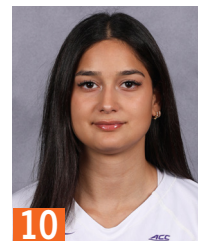
8

KHAYA GORDON
Jr. | PIN | 6-0



9

KATIE HURTA
RJR. | PIN | 6-1



10

NIL OKUR
Sr. | MH | 6-0



11

ADDI RAINS
So. | L | 5-5



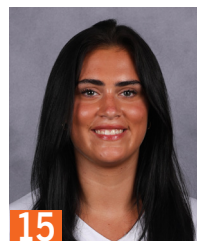
12

CLAIRE LUOMA
So. | L | 5-7



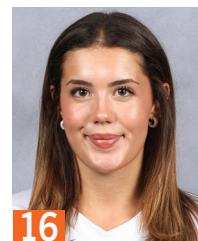
14

AUDREY ARMBRUSTER
Jr. | S | 5-11



15

KATE SIMINGTON
Jr. | MH | 6-4



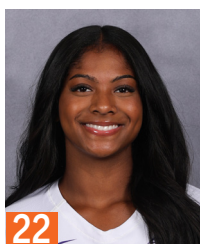
16

ECEM AKSOY
Fr. | PIN | 5-11



19

KATE HANSEN
Jr. | MH | 6-3



22

MIA MOORE
Sr. | PIN | 6-0



23

MIA MCGRATH
Sr. | PIN | 5-11



24

BIANCA MARTINEZ
Sr. | MH | 6-2



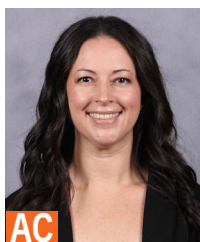
28

McKENNA GILDON
Jr. | L | 5-10



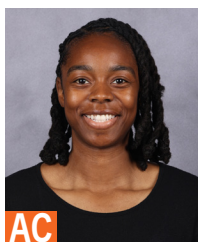
HC

JACKIE SIMPSON KIRR
Head Coach



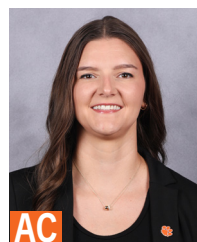
AC

TAYLOR UNROE
Associate Head Coach



AC

MO MCKENNEY
Assistant Coach



AC

HALEY BILBRUCK
Assistant Coach



DO

NICOLE WILLIS
Director of Operations

STATISTICS



2025-26 Clemson Women's Volleyball Combined Team Statistics All games

Page 1/1
as of Nov 24, 2025

Game Records

Overall	Conference	Home	Away	Neutral
16 - 14	4 - 14	10 - 8	4 - 6	2 - 0

Team Box Score

Team Box Score			Attack					Set		Serve				Dig			Blocking						
##	Player	SP	K	K/S	E	TA	PCT	A	A/S	SA	SE	SA/S	RE	DIG	DIG/S	BS	BA	TOT/S	BLK/S	BE	BHE	PTS	
2	Wagner, Kennedy	54	208	3.85	70	497	.278	0	0.00	5	19	0.09	4	46	0.85	13	13	26	0.48	5	0	232.5	
6	Sandt, Katherine	107	59	0.55	10	156	.314	1015	9.49	29	36	0.27	0	298	2.79	5	32	37	0.35	8	0	109.0	
8	Gordon, Khaya	42	98	2.33	65	302	.109	1	0.02	1	5	0.02	1	22	0.52	2	13	15	0.36	3	0	107.5	
9	Hurta, Katie	24	37	1.54	28	118	.076	17	0.71	0	3	0.00	0	23	0.96	1	10	11	0.46	0	0	43.0	
10	Okur, Nil	99	127	1.28	34	320	.291	5	0.05	0	0	0.00	0	32	0.32	10	77	87	0.88	7	0	175.5	
11	Rains, Addi	106	0	0.00	1	4	-.250	28	0.26	20	26	0.19	20	215	2.03	0	0	0	0.00	0	0	20.0	
12	Luoma, Claire	103	0	0.00	1	4	-.250	18	0.17	21	40	0.20	20	189	1.83	0	0	0	0.00	0	0	21.0	
14	Armbruster, Audrey	7	1	0.14	1	2	.000	34	4.86	0	3	0.00	0	12	1.71	0	0	0	0.00	1	0	1.0	
15	Simington, Kate	24	36	1.50	17	98	.194	0	0.00	2	0	0.08	1	10	0.42	3	16	19	0.79	1	0	49.0	
16	Aksoy, Ecem	20	47	2.35	23	140	.171	2	0.10	0	1	0.00	2	7	0.35	2	5	7	0.35	0	0	51.5	
19	Hansen, Kate	99	218	2.20	40	546	.326	8	0.08	15	18	0.15	1	81	0.82	13	65	78	0.79	6	0	278.5	
22	Moore, Mia	87	220	2.53	127	540	.172	3	0.03	0	0	0.00	1	48	0.55	1	37	38	0.44	11	0	239.5	
23	McGrath, Mia	108	306	2.83	139	1062	.157	41	0.38	24	57	0.22	18	259	2.40	11	31	42	0.39	8	0	356.5	
24	Martinez, Bianca	20	32	1.60	15	88	.193	1	0.05	2	3	0.10	0	5	0.25	3	9	12	0.60	2	0	41.5	
28	Gildon, McKenna	109	1	0.01	1	6	.000	132	1.21	16	42	0.15	26	425	3.90	0	0	0	0.00	0	0	17.0	
CLEMSON		109	1390	12.75	572	3883	.211	1305	11.97	135	253	1.24	119	1672	15.34	64	308	218	2.00	52	0	1,743.0	
Opponents		109	1350	12.39	553	3844	.207	1260	11.56	119	262	1.09	135	1626	14.92	57	380	247	2.27	48	4	1,716.0	

Team statistics

	CU	OPP
ATTACK		
Kills	1390	1350
Errors	572	553
Total Attacks	3883	3844
Attack Pct	.211	.207
Kills/Set	12.75	12.39
SET		
Assists	1305	1260
Attempts	3893	3864
Assist Pct	.335	.326
Assists/Set	11.97	11.56
SERVE		
Aces	135	119
Errors	253	262
Attempts	2381	2337
Serve Pct	.894	.888
Aces/Set	1.24	1.09
SERVE RECEPTIONS		
Errors	119	135
Errors/Set	1.09	1.24
Attempts	2075	2128
Reception Pct	.943	.999
DEFENSE		
Digs	1672	1626
Digs/Set	15.34	14.92
BLOCKING		
Block solo	64	57
Block Assist	308	380
Total Blocks	218	247
Blocks/Set	2.00	2.27
Block Errors	52	48
Ball handling errors	0	4
ATTENDANCE		
Total	16844	13157
Dates/Avg Per Date	18/936	10/1316
Neutral Site #/Avg	2/85	-
Current win streak	0	-
Home win streak	0	-

Team Results

Date	Opponent	Score	Score-by-set	Att.
08/29/2025	vs Campbell	W 3-0	25-19,25-15,25-23	102
08/30/2025	vs ETSU	W 3-0	25-13,25-23,25-20	67
08/31/2025	at South Carolina	W 3-2	14-25,25-22,25-17,23-25,15-11	3405
09/04/2025	N.C. A&T	W 3-0	25-22,25-19,25-22	634
09/05/2025	N.C. A&T	W 3-1	25-16,25-13,24-26,25-18	1295
09/09/2025	Georgia	W 3-1	25-21,22-25,27-25,25-23	843
09/11/2025	Elon	W 3-0	25-13,25-14,25-10	302
09/12/2025	USC Upstate	W 3-1	25-11,24-26,25-18,25-23	830
09/13/2025	Wofford	W 3-2	25-15,25-13,20-25,24-26,16-14	851
09/18/2025	Georgetown	W 3-2	23-25,25-22,25-15,21-25,15-7	735
09/19/2025	Norfolk St.	W 3-1	25-19,23-25,25-17,25-11	213
09/19/2025	Charleston So.	W 3-1	23-25,25-13,25-13,25-18	1120
* 09/26/2025	Florida St.	L 1-3	20-25,13-25,25-21,20-25	1500
* 09/28/2025	Miami (FL)	L 0-3	19-25,18-25,18-25	1320
* 10/03/2025	at Pittsburgh	L 0-3	17-25,10-25,21-25	2864
* 10/05/2025	at SMU	L 0-3	16-25,18-25,15-25	2575
* 10/10/2025	North Carolina	L 0-3	21-25,13-25,20-25	1314
* 10/12/2025	Duke	L 0-3	23-25,19-25,22-25	831
* 10/17/2025	at NC State	L 1-3	25-21,12-25,17-25,17-25	1491
* 10/19/2025	at Wake Forest	L 0-3	19-25,22-25,16-25	548
* 10/24/2025	Stanford	L 1-3	27-25,18-25,26-28,15-25	1103
* 10/26/2025	California	W 3-0	25-21,25-19,25-18	602
* 10/31/2025	at Virginia Tech	L 1-3	21-25,22-25,25-16,24-26	185
* 11/02/2025	at Virginia	W 3-1	22-25,25-20,25-19,28-26	412
* 11/07/2025	at Syracuse	W 3-1	25-15,23-25,26-24,25-16	277
* 11/09/2025	at Boston College	W 3-0	25-19,25-14,25-18	200
* 11/12/2025	Georgia Tech	L 0-3	23-25,17-25,18-25	546
* 11/14/2025	at Georgia Tech	L 0-3	19-25,21-25,24-26	1200
* 11/21/2025	Notre Dame	L 2-3	25-20,21-25,20-25,25-16,10-15	1305
* 11/23/2025	Louisville	L 0-3	16-25,12-25,21-25	1500