



MATCH NOTES

CLEMSON VOLLEYBALL

#OWNTODAY

Match 19-20: Clemson at NC State & Wake Forest
October 17-19, 2025 • Raleigh, N.C. • Winston-Salem, N.C.

2025 SCHEDULE & RESULTS

| Date | Opponent | WATCH | Time/Result |
|----------------|----------------------------|-------------|-------------|
| Fri., Aug. 29 | # vs. Campbell | N/A | W, 3-0 |
| Sat., Aug. 30 | # vs. East Tennessee State | N/A | W, 3-0 |
| Sun., Aug. 31 | # at South Carolina | SEC+ | W, 3-2 |
| Thu., Sept. 4 | North Carolina A&T | ACCNX | W, 3-0 |
| Fri., Sept. 5 | North Carolina A&T | ACCNX | W, 3-1 |
| Tue., Sept. 9 | & Georgia | ACCNX | W, 3-1 |
| Thu., Sept. 11 | \$ Elon | ACCNX | W, 3-0 |
| Fri., Sept. 12 | \$ USC Upstate | ACCNX | W, 3-1 |
| Sat., Sept. 13 | \$ Wofford | ACCNX | W, 3-2 |
| Thu., Sept. 18 | ^ Georgetown | ACCNX | W, 3-2 |
| Fri., Sept. 19 | ^ Norfolk State | ACCNX | W, 3-1 |
| Fri., Sept. 19 | ^ Charleston Southern | ACCNX | W, 3-1 |
| Fri., Sept. 26 | * Florida State | ACCNX | L, 1-3 |
| Sun., Sept. 28 | * No. 24 Miami (Fla.) | ACCNX | L, 0-3 |
| Fri., Oct. 3 | * at No. 5 Pitt | ACCNX | L, 0-3 |
| Sun., Oct. 5 | * at No. 11 SMU | ACCNX | L, 0-3 |
| Fri., Oct. 10 | * No. 23 North Carolina | ACCNX | L, 0-3 |
| Sun., Oct. 12 | * Duke | ACCNX | L, 0-3 |
| Fri., Oct. 17 | * at NC State | ACCNX | 7 p.m. |
| Sun., Oct. 19 | * at Wake Forest | ACCNX | 1 p.m. |
| Fri., Oct. 24 | * Stanford | ACCNX | 6 p.m. |
| Sun., Oct. 26 | * California | ACCNX | 1 p.m. |
| Fri., Oct. 31 | * at Virginia Tech | ACCNX | 6 p.m. |
| Sun., Nov. 2 | * at Virginia | ACCNX | 1 p.m. |
| Fri., Nov. 7 | * at Syracuse | ACCNX | 7 p.m. |
| Sun., Nov. 9 | * at Boston College | ACCNX | 1 p.m. |
| Wed., Nov. 12 | * Georgia Tech | ACC Network | 7 p.m. |
| Fri., Nov. 14 | * at Georgia Tech | ACCNX | 7 p.m. |
| Fri., Nov. 21 | * Notre Dame | ACCNX | 6 p.m. |
| Sun., Nov. 23 | * Louisville | ACC Network | 1 p.m. |
| Tue., Nov. 25 | * Syracuse | ACCNX | 2 p.m. |
| Fri., Nov. 28 | * at Florida State | ACCNX | 2 p.m. |

Bold indicates home match at Jervy Gym

- Columbia, S.C. - South Carolina Tournament, & - SEC/ACC Challenge, \$ - Clemson/Wofford Tournament, ^ - Big Orange Bash, * - ACC match

PROGRAM HISTORY

PROGRAM HISTORY

| | |
|----------------------------------|--|
| First Year of Volleyball | 1977 |
| All-Time Record | 932-724 |
| All-Time Record in Jervy Gym | 439-235 |
| All-Time ACC Record (34 Years) | 294-359 |
| Last NCAA Tournament Appearance | 2009 |
| NCAA Tournament Appearances | 8 (1993, 1994, 1997, 1998, 1999, 2007, 2008, 2009) |
| Last NIVC Tournament Appearance | 2023 |
| NIVC Tournament Appearances | 3 (2018, 2022, 2023) |
| ACC Regular-Season Championships | 2 (1997, 2007) |
| ACC Tournament Championships | 1 (1997) |

STATISTICAL LEADERS

| CATEGORY | NAMES | No. |
|----------------------|-----------------|-------|
| Points | Kennedy Wagner | 232.5 |
| Attacks | Mia McGrath | 566 |
| Kills | Kennedy Wagner | 208 |
| Kills per Set | Kennedy Wagner | 3.85 |
| Hitting Percentage | Nil Okur | .330 |
| Assists | Katherine Sandt | 608 |
| Assists Per Set | Katherine Sandt | 9.50 |
| Service Aces | Katherine Sandt | 21 |
| Service Aces Per Set | Katherine Sandt | 0.33 |
| Digs | McKenna Gildon | 259 |
| Digs Per Set | McKenna Gildon | 3.92 |
| Blocks | Kate Hansen | 42 |
| Blocks Per Set | Kate Hansen | 0.74 |

*Minimum 50% of teams set played required

CLEMSON

| | |
|------------|------|
| Record: | 12-6 |
| Home: | 9-4 |
| Away: | 1-2 |
| Neutral: | 2-0 |
| Non-Conf.: | 12-0 |
| ACC: | 0-6 |

Head Coach: Jackie Simpson Kirr || 5th season

at Clemson: 67-76
Total (7th season) 84-115

Assoc. HC: Taylor Unroe || 5th season

Asst. Coach: Moneshia McKenney || 1st season

Asst. Coach: Haley Bilbruck || 5th season

Dir. of Ops: Nicole Willis || 1st season

NC STATE SERIES

| | |
|--------------|----------|
| CU Record | 41-34 |
| Last Meeting | 10/27/24 |
| on the Road | L, 0-3 |
| Trend | L3 |

NC STATE

| | |
|--------------|---------------------|
| Record: | 9-7 |
| Home: | 7-2 |
| ACC: | 2-4 |
| Head Coach: | Megan Wargo-Kearney |
| at NC State: | 9-7 |
| Total: | 9-7 |

WAKE FOREST SERIES

| | |
|--------------|----------|
| CU Record | 36-21 |
| Last Meeting | 10/25/24 |
| on the Road | L, 1-3 |
| Trend | L4 |

WAKE FOREST

| | |
|-------------|----------------|
| Record: | 8-9 |
| Home: | 4-2 |
| ACC: | 2-4 |
| Head Coach: | Jeff Hulsmeyer |
| at WF: | 8-9 |
| Total: | 286-171 |

NEED TO KNOW

TIGER TRIO

- The Tigers shifted to a 6-2 for Friday's matchup against North Carolina that featured redshirt sophomore Katherine Sandt and redshirt junior Katie Hurta splitting the setter role
- The duo has a special connection, as both are graduates from Nazareth Academy and led the Rocky Roadrunners to an Illinois State Title in 2021, which was the first state title for any girls' sport in school history
- Hurta, who originally signed with Penn State out of college, was a setter before transitioning to a pin attacker with the Tigers in 2023
- Joining the duo with a unique connection to one another is senior Mia McGrath, who played club ball with Hurta
- On her high school team with Sandt and club team with McGrath, Hurta ran a 6-2 where she would hit on the front line and set on the back line
- The trio of Tigers played together briefly in club ball during their 17s season at nationals. Sandt, who was on the 16s team of a different club, joined Hurta and McGrath because her other club was already done competing
- Hurta led the Tigers against UNC with 11 assists in her first match back setting
- On Sunday against Duke, the Tigers briefly ran a 6-2 that included Hurta hitting on the front line
- On the year, Sandt leads the team with 608 assists (9.50 a/s) and has contributed 175 digs with a team-high 21 aces
- McGrath has 175 kills during her senior campaign and surpassed 800 career kills on Friday vs. UNC

CAN YOU DIG IT?

- The Tigers continue to find ways to elevate the ball defensively, especially behind junior libero McKenna Gildon
- Gildon (Gil to her teammates) leads the team with 259 digs (3.92 d/s) to power Clemson to 1,038 as a program - this number leads the ACC and sits 60th nationally
- Gil's 259 sits third among ACC players, while her 3.92 per set is fifth
- As the starting libero, Gildon has nearly doubled her career dig count after posting 197 during her first two seasons with the Tigers
- Joining her on the back line are sophomores Addi Rains (129) and Claire Luoma (114), while setter Katherine Sandt (175) and pin attacker Mia McGrath (165) contribute as six-rotation players
- Rains, a Yorktown, Ind. native, played club volleyball for Munciana Volleyball, the same club that associate head coach Taylor Unroe played for
- All 15 players on the 2025 roster have contributed at least three digs to the Tigers 1,038 dig total

MIDDLE HITTERS

- Clemson brings power in the middle of the court with its four middle hitters: Kate Hansen, Bianca Martinez, Nil Okur and Kate Simington
- The group of four have a .243 hitting percentage or higher after all appearing in at least 10 matches
- A dynamic group offensively, Hansen averages 2.23 kills per set while Martinez (1.81), Simington (1.61) and Okur (1.34) follow
- Starting on Friday, Oct. 10 against North Carolina, the Tigers played all four of their middles with Hansen and Martinez serving as the middles while Okur and Simington were in rotation as pin attackers
- Providing height at the net, the group has combined for 107 blocks (17 solo, 90 assisted)
- Hansen leads the group with 42 blocks (six solo, 36 assisted) for 0.74 per set. Okur trails her with 40 total blocks (five solo, 35 assisted) for 0.71 per set
- Simington is averaging 0.83 blocks per set (15 total - three solo, 12 assisted) and Martinez paces herself at 0.63 per set (10 total - three solo, seven assisted)
- On their careers, Hansen maintains a 0.95 block per set pace with 234 total blocks (45 solo, 189 assisted), Martinez sits at 0.83 per set (263 total - 47 solo, 216 assisted), Okur holds a 0.83 per set pace (186 total - 18 solo, 168 assisted) and Simington sits with 0.71 blocks per set (96 total - 16 solo, 80 assisted)

PLAYERS

2



KENNEDY WAGNER

Jr. • PIN • 6-0 • Valparaíso, Ind. • Valparaíso HS

| | SP | Kills | K/Set | Digs | Blocks | PTS |
|--------|-----|-------|-------|------|--------|-------|
| 2025 | 54 | 208 | 3.85 | 46 | 26 | 232.5 |
| Career | 196 | 558 | 2.85 | 212 | 69 | 648.5 |

Season Highs: 22 kills, 2 aces, 7 digs (2x), 5 blocks

- Finished with a career-high 22 kills vs. Florida State
- Tallied 20 kills vs. NC A&T
- Led team with 16 kills and 5 blocks vs. Georgia
- Clocks 2 solo blocks and 1 assisted with 11 kills vs. NC A&T in home opener
- Recorded 19 kills at South Carolina & vs. Wofford
- Had double-digit kills in 12 matches this season
- Gamecock Classic All-Tournament Team

6



KATHERINE SANDT

RSO. • S • 6-0 • Western Springs, Ill. • Nazareth Academy

| | SP | Assists | A/Set | Kills | Digs | PTS |
|--------|-----|---------|-------|-------|------|------|
| 2025 | 64 | 608 | 9.50 | 33 | 175 | 65.5 |
| Career | 159 | 1343 | 8.45 | 74 | 385 | 143 |

Season Highs: 52 assists, 6 kills, 22 digs, 4 aces

- Recorded 52 assists, 10 digs and 3 blocks against Georgetown
- Had a season-high 22 digs & 49 assists vs. Wofford
- Clocks 40 assists and 18 digs with 2 aces vs. USC Upstate
- Finished with 47 assists at South Carolina & vs. Florida State
- Has 6 double-doubles this season
- Big Orange Bash All-Tourney Team and Setter of the Tournament
- Recorded a career-high 63 assists and 12 digs at Georgia Tech (2024)

8



KYAHA GORDON

Jr. • PIN • 6-0 • Belize City, Belize • Navarro College

| | SP | Kills | K/Set | Digs | Blocks | PTS |
|--------|----|-------|-------|------|--------|------|
| 2025 | 17 | 25 | 1.47 | 10 | 4 | 28.5 |
| Career | 17 | 25 | 1.47 | 10 | 4 | 28.5 |

Season Highs: 7 kills (2x), 3 digs, 1 ace, 1 block (4x)

- Made Clemson debut vs. NC A&T
- Had 4 kills, 2 digs and 1 blocks vs. Norfolk State
- Tallied a dig and an ace vs. Elon
- Notched 7 kills, 3 digs and 1 block at SMU
- Clocks 7 kills, 2 digs and 1 block vs. UNC
- Transferred from Navarro College - joined team in January 2025
- Four-time medalist with the Belize National Team

9



KATIE HURTA

RJr. • PIN • 6-1 • Palos Hills, Ill. • Penn State

| | SP | Kills | Assists | Digs | Blocks | PTS |
|--------|-----|-------|---------|------|--------|-----|
| 2025 | 19 | 27 | 17 | 20 | 10 | 32 |
| Career | 102 | 182 | 24 | 69 | 33 | 201 |

Season Highs: 10 kills, 4 blocks, 7 digs (2x), 11 assists

- Recorded four blocks against Florida State
- Finished with 11 assists and 7 digs vs. UNC
- Clocks 10 kills, 5 assists, 7 digs and 1 block vs. Duke
- Tallied 7 kills and 2 blocks vs. NC A&T
- Appeared in 4 matches in 2024 - missed rest of season due to injury
- Gators Invitational & Tulane Invitational All-Tournament Team (2023)
- Led Tigers with 19 kills against Sacramento State (2023)

10



NIL OKUR

Sr. • MH • 6-0 • Istanbul, Türkiye • Michigan State

| | SP | Kills | K/Set | Blocks | Blk/Set | PTS |
|--------|-----|-------|-------|--------|---------|------|
| 2025 | 56 | 75 | 1.34 | 40 | 0.71 | 97.5 |
| Career | 224 | 304 | 1.36 | 186 | 0.83 | 434 |

Season Highs: 10 kills, 3 digs (2x), 6 blocks, 12.5 points

- Recorded 6 blocks and 5 kills vs. North Carolina
- Tallied season-high 10 kills and added 4 blocks vs. Charleston Southern
- Finished with 9 kills and 4 blocks against USC Upstate
- Notched 4 blocks at South Carolina
- Transferred from Michigan State - joined team in January 2025
- Tallied a career-high 8 blocks at Navy
- Recorded a career-high 13 kills at Indiana to contribute to 17.5 total points

11



ADDI RAINS

So. • L • 5-5 • Yorktown, Ind. • Yorktown HS

| | SP | Digs | D/Set | Assists | Aces | PTS |
|--------|-----|------|-------|---------|------|-----|
| 2025 | 63 | 129 | 2.05 | 14 | 16 | 16 |
| Career | 157 | 290 | 1.85 | 29 | 19 | 21 |

Season Highs: 3 assists, 18 digs, 6 aces

- Joined Clemson's Top 10 list with 6 aces vs. Elon
- Tallied a career-high 18 digs vs. Georgia
- Clocks 11 digs and 1 ace vs. Duke
- Has double-digit digs in 4 matches in 2025
- Recorded 10 digs at Georgia Tech and vs. Wake Forest (2024)
- Finished with 9 digs at Georgia Southern and against Pitt (2024)
- Finished her freshman campaign with 161 digs

12



CLAIRE LUOMA

So. • L • 5-7 • Franklin, Wis. • Franklin HS

| | SP | Digs | D/Set | Assists | Aces | PTS |
|--------|-----|------|-------|---------|------|-----|
| 2025 | 61 | 192 | 1.71 | 11 | 11 | 11 |
| Career | 112 | 192 | 1.71 | 20 | 19 | 19 |

Season Highs: 3 assists (2x), 2 aces, 11 digs (2x)

- Finished with a season-high 11 digs vs. Wofford & Charleston Southern
- Recorded 10 digs in the second game vs. NC A&T
- Tallied 2 aces and 10 digs against Campbell
- Notched 10 digs and 1 ace at South Carolina
- Tallied a career-high 12 digs at Georgia Southern (2024)
- Recorded 11 digs and 2 aces vs. Kennesaw State (2024)
- Opened the season with 4 aces and 4 digs vs. Loyola Chicago (2024)

14



AUDREY ARMBRUSTER

Jr. • S • 5-11 • Cincinnati, Ohio • Mount Notre Dame

| | SP | Assists | A/Set | Kills | Digs | PTS |
|--------|----|---------|-------|-------|------|-----|
| 2025 | 5 | 30 | 6.00 | 1 | 8 | 1 |
| Career | 71 | 392 | 5.52 | 11 | 120 | 24 |

Season Highs: 14 assists, 1 kill, 3 digs

- Had 9 assists and 3 digs vs. Elon
- Recorded 14 assists and 2 digs in the second game vs. NC A&T
- Tallied 1 assist in 1 set of action vs. ETSU
- Finished with a career-high 51 assists vs. Wofford (2024)
- Had four double-doubles during the 2024 season
- Recorded a season-high 15 digs against Kennesaw State (2024)
- Finished with 10 digs and 9 assists at Notre Dame (2024)

PLAYERS

15



KATE SIMINGTON

Jr. • MH • 6-4 • Excelsior, Minn. • Minnetonka, HS

| | SP | Kills | K/Set | Blocks | Blk/Set | PTS |
|--------|-----|-------|-------|--------|---------|-----|
| 2025 | 18 | 29 | 1.61 | 15 | 0.83 | 39 |
| Career | 136 | 195 | 1.43 | 96 | 0.71 | 252 |

Season Highs: 6 kills (2x), 3 digs, 4 blocks

- Clocked 3 blocks in matches against UNC and Duke
- Recorded 4 blocks and two kills at Pitt
- Had 6 kills and 3 blocks against Florida State
- Finished with 3 kills and 1 block vs. Elon & Norfolk State
- Tallied 6 kills in first game against NC A&T
- Appeared in 5 matches, starting 1 in 2024 after returning from injury
- Clocked at least 1 block in 29 matches during the 2023 season

16



ECEM AKSOY

Fr. • PIN • 5-11 • Izmir, Turkiye • Doga Koleji

| | SP | Kills | K/Set | Digs | Blocks | PTS |
|--------|----|-------|-------|------|--------|-----|
| 2025 | 6 | 16 | 2.67 | 3 | 2 | 17 |
| Career | 6 | 16 | 2.67 | 3 | 2 | 17 |

Season Highs: 8 kills, 1 assist, 1 dig (3x), 2 blocks

- Had 8 kills, 2 blocks and 1 dig vs. Elon
- Made Clemson debut in first game against NC A&T
- Clocked 3 kills in second game vs. NC A&T
- Competed with Vakifbank Sports Club & Rota Koleji Sports Club
- 2024 U-19 Turkish National Team Training Invitee
- Second place at 2024 Junior Turkish National Championships
- 2024 High School Turkish National Champions

19



KATE HANSEN

Jr. • MH • 6-3 • Weatherford, Texas • Texas Tech

| | SP | Kills | K/Set | Blocks | Blk/Set | PTS |
|--------|-----|-------|-------|--------|---------|-------|
| 2025 | 57 | 127 | 2.23 | 42 | 0.74 | 162 |
| Career | 247 | 355 | 1.44 | 234 | 0.95 | 532.5 |

Season Highs: 14 kills, 2 aces, 7 digs, 7 blocks

- Finished with a career high against Georgetown with 14 kills, 7 blocks & 2 aces
- Had 11 kills, 5 digs, 2 blocks and 1 ace vs. Wofford
- Recorded 8 kills and 5 blocks in the second game vs. NC A&T
- Had 11 kills vs. ETSU & Wofford
- Finished with 5 blocks, 8 kills and 6 digs at South Carolina
- Gamecock Classic All-Tournament Team & Big Orange Bash MVP
- Led the team with 93 blocks (19 solo, 74 assisted) for a 0.83 blk/set avg. (2024)

22



MIA MOORE

Sr. • PIN • 6-0 • Frisco, Texas • Frisco Heritage HS

| | SP | Kills | K/Set | Digs | Blocks | PTS |
|--------|-----|-------|-------|------|--------|-------|
| 2025 | 50 | 109 | 2.18 | 28 | 18 | 118 |
| Career | 104 | 196 | 1.88 | 59 | 40 | 217.5 |

Season Highs: 15 kills, 5 digs (2x), 4 blocks

- Clocked double-digit kills in all 3 matches of the Big Orange Bash
- Had 7 kills, 5 digs and 2 blocks vs. Wofford
- Notched a career-high 15 kills and 5 digs vs. Georgia
- Finished with 7 kills and 3 digs in the first game against NC A&T
- Recorded 12 kills at South Carolina with 2 blocks
- Tallied 10 kills with 6 digs & 3 blocks vs. No. 25 North Carolina (2024)
- 2024-25 Member of POWER - Clemson's women's empowerment organization

23



MIA McGRATH

Sr. • PIN • 5-11 • Deerfield, Ill. • Loyola Academy

| | SP | Kills | K/Set | Digs | Blocks | PTS |
|--------|-----|-------|-------|------|--------|-------|
| 2025 | 65 | 175 | 2.69 | 165 | 20 | 206.5 |
| Career | 404 | 818 | 2.02 | 889 | 87 | 966 |

Season Highs: 21 kills, 4 aces, 19 digs, 3 blocks (2x)

- Had 21 kills, 9 digs, 3 blocks and 1 ace vs. Wofford
- Notched 19 digs and 14 kills with 4 aces vs. Georgia
- Gamecock Classic All-Tournament MVP & Big Orange Bash All-Tourney Team
- Clocked a career-high 23 kills and added 3 aces against Wofford (2024)
- Finished with a career-high 20 digs, 14 kills and 3 solo blocks at WMU (2024)
- ACC Student Athlete Advisory Committee
- Co-host of Beyond the Paw Podcast at Clemson

24



BIANCA MARTINEZ

Sr. • MH • 6-2 • Omaha, Neb. • Cal State Fullerton

| | SP | Kills | K/Set | Blocks | Blk/Set | PTS |
|--------|-----|-------|-------|--------|---------|------|
| 2025 | 16 | 29 | 1.81 | 10 | 0.63 | 37.5 |
| Career | 318 | 517 | 1.63 | 263 | 0.83 | 674 |

Season Highs: 5 kills (2x), 2 digs, 3 blocks

- Recorded 3 blocks and 4 kills vs. Duke
- Had 4 kills and 1 solo block vs. USC Upstate
- Finished with 5 kills and 1 solo block in second game vs. NC A&T
- Transferred from Cal State Fullerton - joined team in January 2025
- 2022 Big West All-Freshman Team
- Clocked 645 points to average 2.11 per set in 3 years at Cal State Fullerton
- Finished with 257 total blocks, including 45 solo blocks

28



McKENNA GILDON

Jr. • L • 5-10 • Plano, Texas • Liberty HS

| | SP | Digs | D/Set | Assists | Aces | PTS |
|--------|-----|------|-------|---------|------|-----|
| 2025 | 66 | 259 | 3.92 | 88 | 9 | 10 |
| Career | 250 | 556 | 2.22 | 131 | 44 | 46 |

Season Highs: 11 assists, 1 ace (9x), 26 digs

- Big Orange Bash All-Tournament Team
- Recorded a career-high 26 digs against Charleston Southern
- Had 24 digs and 9 assists vs. Wofford
- Tallied 23 digs vs. NC A&T & 25 vs. Florida State
- Recorded 16 digs at South Carolina
- Clocked double-digit digs in 12 matches this season
- Finished with 10 digs vs. Wake Forest, NC State and BC (2024)

PROGRAM FACTS

| | |
|-----------------------|----------------------------------|
| Nickname | Tigers |
| Location | Clemson, S.C. |
| Colors | Tiger Orange & Regalia |
| Founded | 1889 |
| Enrollment | 29,077 |
| President | Dr. James P. Clements (UMBC '85) |
| Director of Athletics | Graham Neff (Georgia Tech '06) |
| Facility/Capacity | Jervy Gym (1,500) |

OWN TODAY • Tomorrow's success is built on how we show up today.

GRATITUDE • GRIT • GRACE

GRATITUDE recognizes and appreciates the good, even in hard moments. It's a mindset that fuels positivity, respects the process, and keeps us grounded as we pursue excellence.

GRIT is the drive to keep going through adversity, the resilience to push forward when you feel stuck, and the toughness to never back down.

GRACE leads with purpose, lifts others up, and strengthens our connection. It helps us hold ourselves accountable with humility and respect. Grace isn't soft, it's high standards with heart.

QUICK FACTS

MEDIA SERVICES

CLEMSON ATHLETIC COMMUNICATIONS

| | |
|-----------------------------------|---|
| Volleyball Contact | Andrew Fostvelt (Texas Tech '23) |
| Email | rfostve@clemson.edu |
| Phone | 512-426-2948 |
| Volleyball Oversight | Valerie Johnson (Central Michigan '18) |
| Email | vjohns4@clemson.edu |
| Phone | 712-269-4149 |
| Assoc. AD - Communications | Jeff Kallin (Clemson '06) |
| Email | kallin@clemson.edu |

CLEMSON ATHLETICS

| | |
|----------------------------|---------------------------------|
| Website | ClemsonTigers.com |
| IPATAY Office Phone | 1-800-CLEMSON |
| Social Media | @ClemsonVB (X) |
| | @ClemsonVB (Instagram) |
| | @ClemsonVolleyball (Facebook) |
| | @ClemsonTigers (Main Athletics) |

ACC MEDIA RELATIONS

Bailey Grossetti is the volleyball athletic communications contact at the ACC office. She can be reached via email at bgrossetti@theacc.org.

INTERVIEW

Interviews are available by request with select players and **Head Coach Jackie Simpson Kirr**. Contact **Andrew Fostvelt** via phone or email to coordinate all interview requests. Players are available at the discretion of the women's volleyball staff upon request.

MORE INFORMATION



2025 ACC STANDINGS

| SCHOOL | CONF | CPCT. | OVERALL | PCT. | STREAK |
|----------------|------|-------|---------|------|--------|
| Louisville | 6-0 | 1.000 | 14-2 | .875 | W7 |
| North Carolina | 6-0 | 1.000 | 13-2 | .867 | W7 |
| Miami | 5-1 | .833 | 15-2 | .882 | L1 |
| Stanford | 5-1 | .833 | 14-3 | .824 | W2 |
| Pitt | 5-1 | .833 | 13-3 | .812 | W1 |
| SMU | 4-2 | .667 | 12-4 | .750 | W4 |
| Notre Dame | 4-2 | .667 | 7-7 | .500 | W3 |
| Syracuse | 3-3 | .500 | 11-5 | .688 | L1 |
| California | 2-3 | .400 | 5-10 | .333 | L3 |
| Boston College | 2-4 | .333 | 13-5 | .722 | W1 |
| NC State | 2-4 | .333 | 9-7 | .562 | W1 |
| Florida State | 2-4 | .333 | 8-7 | .533 | L3 |
| Wake Forest | 2-4 | .333 | 8-9 | .471 | L1 |
| Georgia Tech | 2-4 | .333 | 7-8 | .467 | L1 |
| Duke | 2-4 | .333 | 5-12 | .294 | W1 |
| Virginia Tech | 1-5 | .167 | 9-8 | .529 | L2 |
| Virginia | 1-5 | .167 | 8-8 | .500 | L2 |
| Clemson | 0-6 | .000 | 12-6 | .667 | L6 |

MILESTONES

| UPCOMING MILESTONES | HAS | NEEDS |
|-------------------------------|-------|-------|
| McKenna Gildon 600 digs | 556 | 44 |
| Kate Hansen 250 blocks | 234 | 16 |
| Kate Hansen 600 points | 532.5 | 67.5 |
| Katie Hurta 200 kills | 182 | 18 |
| Claire Luoma 200 digs | 192 | 8 |
| Bianca Martinez 700 points | 674 | 26 |
| Mia McGrath 900 kills | 818 | 82 |
| Mia McGrath 100 aces | 92 | 8 |
| Mia McGrath 900 digs | 889 | 11 |
| Mia McGrath 1,000 points | 966 | 34 |
| Mia Moore 200 kills | 196 | 4 |
| Nil Okur 200 blocks | 186 | 14 |
| Addi Rains 300 digs | 290 | 10 |
| Katherine Sandt 1,500 assists | 1,343 | 157 |
| Katherine Sandt 400 digs | 385 | 15 |
| Kate Simington 100 blocks | 96 | 4 |

CLEMSON ON PAPER

Statistics: As of Oct. 13

| | National Rank | Conference Rank | Value |
|-------------------------------------|---------------|-----------------|-------|
| Aces Per Set (343 ranked) | 204 | 11 | 1.44 |
| Assists Per Set (343 ranked) | 80 | 7 | 12.24 |
| Blocks Per Set (342 ranked) | 233 | 18 | 1.88 |
| Digs Per Set (343 ranked) | 37 | 1 | 15.73 |
| Hitting Percentage (343 ranked) | 117 | 9 | .229 |
| Kills Per Set (343 ranked) | 112 | 8 | 12.95 |
| Match W-L Pctg. (341 ranked) | 83 | 9 | .667 |
| Opp Hitting Percentage (343 ranked) | 120 | 9 | .195 |
| Team Assists (343 ranked) | 73 | 1 | 808 |
| Team Attacks Per Set (343 ranked) | 118 | 5 | 34.86 |
| Team Digs (343 ranked) | 60 | 1 | 1,038 |
| Team Kills (343 ranked) | 91 | 2 | 855 |
| Team Service Aces (343 ranked) | 171 | 7 | 95 |
| Team Total Attacks (343 ranked) | 124 | 2 | 2,301 |
| Team Total Blocks (343 ranked) | 219 | 18 | 124 |

CLEMSON'S 2025 RECORD WHEN...

| LOCATION | Overall | ACC |
|--|---------|-----|
| Home | 9-4 | 0-4 |
| Away | 1-2 | 0-2 |
| Neutral | 2-0 | 0-0 |
| RANKING | | |
| vs. Ranked Opponent | 0-4 | 0-4 |
| MATCH LENGTH | | |
| 3-Set Matches | 4-5 | 0-5 |
| 4-Set Matches | 5-1 | 0-1 |
| 5-Set Matches | 4-0 | 0-0 |
| STATISTICAL LEADERS | | |
| CU hits .250 or better | 9-0 | 0-0 |
| CU hits below .250 | 3-6 | 0-6 |
| Opp. hits .250 or better | 0-5 | 0-5 |
| Opp. hits below .250 | 12-1 | 0-1 |
| CU has higher attack % | 12-0 | 0-0 |
| CU has lower attack % | 0-6 | 0-6 |
| Teams have same attack % | 0-0 | 0-0 |
| CU has more kills | 11-0 | 0-0 |
| CU has fewer kills | 1-6 | 0-6 |
| Same number of kills | 0-0 | 0-0 |
| 3 players with 10+ kills | 7-0 | 0-0 |
| 3 players hit .300+ (min. 10 attempts) | 6-0 | 0-0 |
| CU hits 30+ kills | 12-3 | 0-3 |
| CU allows 30+ kills | 10-6 | 0-6 |
| CU has more aces | 9-1 | 0-1 |
| CU has fewer aces | 1-4 | 0-4 |
| Same number of aces | 2-1 | 0-1 |
| CU has more digs | 11-0 | 0-0 |
| CU has fewer digs | 1-5 | 0-5 |
| Same number of digs | 0-1 | 0-1 |
| CU has more blocks | 6-0 | 0-0 |
| CU has fewer blocks | 5-6 | 0-6 |
| Same number of blocks | 1-0 | 0-0 |

HEAD COACH JACKIE SIMPSON KIRR



SIMPSON KIRR FILE

Education: Wisconsin (UG - 2008) || East Carolina (Masters - 2013)
Years at Clemson: Total - 9
 - 5 as Head Coach (2021-Pres.)
 - 4 as Associate Head Coach/Recruiting Coordinator (2017-20)
 - Joined Clemson staff in 2017
Record as a Head Coach: 84-115 (seventh season as HC)
 - Clemson: 67-76
 - George Mason: 17-39
Family:
 - Jordy Kirr (Wife)
 - Jackson (Son)
 - Besser (Daughter)

JERVEY GYM FILE

AGAINST ALL OPPONENTS IN JERVEY TEAM RECORDS (ALL TIME)

| Category | No. | Opponent | Date |
|---------------|------|---------------------|------------|
| Kills | 93 | Florida State | 10/11/1996 |
| | 93 | Maryland | 11/17/2006 |
| Attacks | 282 | Maryland | 11/08/1986 |
| Hitting % | .563 | Charleston Southern | 09/20/1996 |
| Service Aces | 26 | Augusta College | 09/05/1989 |
| Block Solos | 18 | Middle Tennessee | 09/21/1991 |
| Block Assists | 34 | Duke | 09/25/2010 |
| Assists | 94 | Florida State | 10/11/1996 |
| Digs | 149 | Maryland | 11/08/1986 |

INDIVIDUAL RECORDS (ALL TIME)

| Category | No. | Name | Opponent | Date |
|--------------------------------|------|-----------------|----------------|----------|
| Kills | 32 | Robin Kibben | Auburn | 09/11/93 |
| | 32 | Julie Rodriguez | Florida State | 10/11/96 |
| | 32 | Brittany Ross | Georgia Tech | 11/15/05 |
| Attacks | 84 | Leah Perri | Wake Forest | 11/06/15 |
| Hitting % | .923 | Kristin Swanson | Wofford | 09/18/02 |
| (Minimum of 10 Total Attempts) | | | | |
| Service Aces | 10 | Joy Fleming | Virginia | 10/18/85 |
| Block Solos | 7 | Wendy Anderson | North Carolina | 10/17/86 |
| | 7 | Joy Fleming | Charlotte | 11/11/86 |
| Block Assists | 13 | Alexa Rand | Duke | 09/25/10 |
| Assists | 86 | Michelle Thieke | Florida State | 10/11/96 |
| Digs | 35 | Anna Vallinch | North Carolina | 09/25/04 |

TOP 10 JERVEY ATTENDANCE RECORDS UNDER SIMPSON KIRR

| Rank | No. | Opponent | Result | Score | Date |
|------|--------|------------------|--------|-------|----------|
| 1. | 1,500 | * Florida State | L | 1-3 | 9/26/25 |
| | 1,500 | South Carolina | L | 0-3 | 9/24/24 |
| 3. | 1,393+ | * NC State | L | 0-3 | 9/22/23 |
| 4. | 1,360+ | * Louisville | L | 1-3 | 11/5/23 |
| 5. | 1,320 | * Miami (Fla.) | L | 0-3 | 9/28/25 |
| 6. | 1,314 | * North Carolina | L | 0-3 | 10/10/25 |
| 7. | 1,295 | NC A&T | W | 3-1 | 9/5/25 |
| 8. | 1,294+ | Middle Tennessee | W | 3-1 | 8/25/23 |
| 9. | 1,242+ | * Notre Dame | W | 3-1 | 11/3/23 |
| 10. | 1,235 | * Pittsburgh | L | 0-3 | 9/27/24 |

Note: Attendance figures are estimates

* - Denotes ACC match; + - Denotes Jervy Gym prior to renovations

2025 COACHING STAFF

TAYLOR UNROE

Associate Head Coach || Defensive Coordinator

Years at Clemson: 5 - joined staff in 2021

Education: Florida (2014)

Notes:

- Lead coach for first contact, Clemson's defensive efforts and serve-receive
- Guided Devan Taylor (2021-24) to second-most digs in Clemson program history
- SEC Libero of the Year & AVCA All-America Honorable Mention (2013)
- Two-time SEC Champion & four NCAA appearances at Florida
- Previously worked with Simpson Kirr at George Mason (2015-16) where she was the defensive coordinator



MO MCKENNEY

Assistant Coach || Recruiting Coordinator

Years at Clemson: 1 - joined staff in 2025

Education: Clemson (2014)

Notes:

- Serves as the offensive analyst & lead coach for attacking
- Builds Clemson VB on Simpson Kirr's "Own To-day" vision & is the connection between Clemson VB IPTAY to grown alumni and ACEs Club network
- AVCA All-American & First Team All-ACC selection as a Tiger
- One of five athletes in Clemson's records with over 500 kills, 1,000 digs and 200 blocks



HALEY BILBRUCK

Assistant Coach || Player Development

Years at Clemson: 5 - joined staff in 2021; First season as an assistant coach (DOVO 2021-24)

Education: Southeast Missouri State (2019)

Notes:

- Lead coach for blocking efforts & works alongside Unroe on defensive efforts
- Manages player development & serves as technical coordinator
- Focus on developing comprehensive reports for individual player improvement
- Second Team All-Ohio Valley selection



NICOLE WILLIS

Director of Volleyball Operations

Years at Clemson: 1 - joined staff in 2025

Education: East Carolina (2014)

Notes:

- Manages team travel & equipment
- All-Conference right side for the Pirates
- Was a player for Simpson Kirr at ECU during Simpson Kirr's first D1 coaching role



2025 ROSTER

NUMERICAL

| # | Player | Pos. | Yr. | Ht. | Hometown | Previous School / High School |
|----|-------------------|------|------|------|-----------------------|---|
| 2 | Kennedy Wagner | PIN | Jr. | 6-0 | Valparaiso, Ind. | Valparaiso HS |
| 6 | Katherine Sandt | S | *So. | 6-0 | Western Springs, Ill. | Nazareth Academy |
| 8 | Khaya Gordon | PIN | Jr. | 6-0 | Belize City, Belize | Navarro College / Saint Catherine Academy |
| 9 | Katie Hurta | PIN | *Jr. | 6-1 | Palos Hills, Ill. | Penn State / Nazareth Academy |
| 10 | Nil Okur | MH | Gr. | 6-0 | Istanbul, Turkiye | Michigan State / Ozel Sezin Okullari |
| 11 | Addi Rains | L | So. | 5-5 | Yorktown, Ind. | Yorktown HS |
| 12 | Claire Luoma | L | So. | 5-7 | Franklin, Wis. | Franklin HS |
| 14 | Audrey Armbruster | S | Jr. | 5-11 | Cincinnati, Ohio | Mount Notre Dame |
| 15 | Kate Simington | MH | Jr. | 6-4 | Excelsior, Minn. | Minnetonka HS |
| 16 | Ecem Aksoy | PIN | Fr. | 5-11 | Izmir, Turkiye | Doga Koleji |
| 19 | Kate Hansen | MH | Jr. | 6-3 | Weatherford, Texas | Texas Tech / Weatherford HS |
| 22 | Mia Moore | PIN | Sr. | 6-0 | Frisco, Texas | Frisco Heritage HS |
| 23 | Mia McGrath | PIN | Sr. | 5-11 | Deerfield, Ill. | Loyola Academy |
| 24 | Bianca Martinez | MH | Sr. | 6-2 | Omaha, Neb. | Cal State Fullerton / Omaha Central HS |
| 28 | McKenna Gildon | L | Jr. | 5-10 | Plano, Texas | Liberty HS |

* - one redshirt

Head Coach:

Associate Head Coach:

Assistant Coach:

Assistant Coach:

Director of Operations:

Jackie Simpson Kirr (5th season • Wisconsin '08)

Taylor Unroe (5th season • Florida '14)

Mo McKenney (1st season • Clemson '14)

Haley Bilbruck (5th season • Southeast Missouri State '19)

Nicole Willis (1st season • East Carolina '14)

PRONUNCIATIONS

| # | Name | Pronunciation |
|----|--------------------------|----------------|
| 6 | Katherine Sandt | SANT |
| 8 | Khaya Gordon | KIE-uh |
| 10 | Nil Okur | nill OH-kerr |
| 12 | Claire Luoma | LOO-muh |
| 14 | Audrey Armbruster | ARM-broo-ster |
| 15 | Kate Simington | SIGH-ming-tin |
| 16 | Ecem Aksoy | eh-JEM AHK-soy |
| 28 | McKenna Gildon | gill - DON |

Jackie Simpson **Kirr** KEER

To hear pronunciations, visit the roster page on ClemsonTigers.com or use the QR code below



2

KENNEDY WAGNER
Jr. | PIN | 6-0



6

KATHERINE SANDT
RSo. | S | 6-0



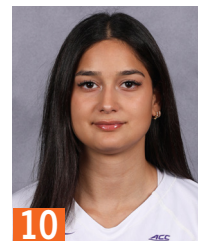
8

KHAYA GORDON
Jr. | PIN | 6-0



9

KATIE HURTA
RJR. | PIN | 6-1



10

NIL OKUR
Sr. | MH | 6-0



11

ADDI RAINS
So. | L | 5-5



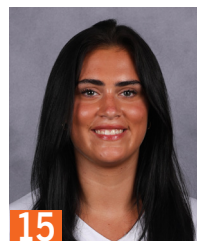
12

CLAIRE LUOMA
So. | L | 5-7



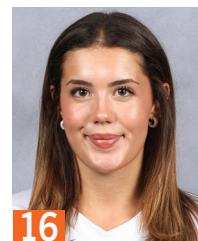
14

AUDREY ARMBRUSTER
Jr. | S | 5-11



15

KATE SIMINGTON
Jr. | MH | 6-4



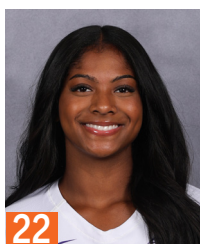
16

ECEM AKSOY
Fr. | PIN | 5-11



19

KATE HANSEN
Jr. | MH | 6-3



22

MIA MOORE
Sr. | PIN | 6-0



23

MIA MCGRATH
Sr. | PIN | 5-11



24

BIANCA MARTINEZ
Sr. | MH | 6-2



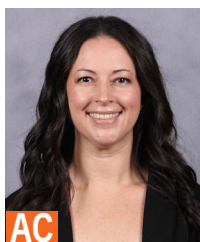
28

McKENNA GILDON
Jr. | L | 5-10



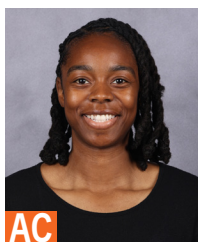
HC

JACKIE SIMPSON KIRR
Head Coach



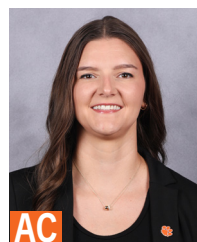
AC

TAYLOR UNROE
Associate Head Coach



AC

MO MCKENNEY
Assistant Coach



AC

HALEY BILBRUCK
Assistant Coach



DO

NICOLE WILLIS
Director of Operations

STATISTICS



2025-26 Clemson Women's Volleyball Combined Team Statistics All games

Page 1/1
as of Oct 12, 2025

Game Records

| Overall | Conference | Home | Away | Neutral |
|---------|------------|-------|-------|---------|
| 12 - 6 | 0 - 6 | 9 - 4 | 1 - 2 | 2 - 0 |

Team Box Score

| | | | Attack | | | | | Set | | Serve | | | | Dig | | Blocking | | | | | | |
|-----------|--------------------|----|--------|-------|-----|------|-------|-----|-------|-------|-----|------|----|------|-------|----------|-----|-------|-------|----|-----|---------|
| ## | Player | SP | K | K/S | E | TA | PCT | A | A/S | SA | SE | SA/S | RE | DIG | DIG/S | BS | BA | TOT/S | BLK/S | BE | BHE | PTS |
| 2 | Wagner, Kennedy | 54 | 208 | 3.85 | 70 | 497 | .278 | 0 | 0.00 | 5 | 19 | 0.09 | 4 | 46 | 0.85 | 13 | 13 | 26 | 0.48 | 5 | 0 | 232.5 |
| 6 | Sandt, Katherine | 64 | 33 | 0.52 | 4 | 92 | .315 | 608 | 9.50 | 21 | 19 | 0.33 | 0 | 175 | 2.73 | 3 | 17 | 20 | 0.31 | 4 | 0 | 65.5 |
| 8 | Gordon, Khaya | 17 | 25 | 1.47 | 19 | 85 | .071 | 1 | 0.06 | 1 | 5 | 0.06 | 1 | 10 | 0.59 | 1 | 3 | 4 | 0.24 | 1 | 0 | 28.5 |
| 9 | Hurta, Katie | 19 | 27 | 1.42 | 16 | 82 | .134 | 17 | 0.89 | 0 | 3 | 0.00 | 0 | 20 | 1.05 | 0 | 10 | 10 | 0.53 | 0 | 0 | 32.0 |
| 10 | Okur, Nil | 56 | 75 | 1.34 | 17 | 176 | .330 | 3 | 0.05 | 0 | 0 | 0.00 | 0 | 17 | 0.30 | 5 | 35 | 40 | 0.71 | 2 | 0 | 97.5 |
| 11 | Rains, Addi | 63 | 0 | 0.00 | 1 | 3 | -.333 | 14 | 0.22 | 16 | 17 | 0.25 | 14 | 129 | 2.05 | 0 | 0 | 0 | 0.00 | 0 | 0 | 16.0 |
| 12 | Luoma, Claire | 61 | 0 | 0.00 | 0 | 3 | .000 | 11 | 0.18 | 11 | 25 | 0.18 | 14 | 114 | 1.87 | 0 | 0 | 0 | 0.00 | 0 | 0 | 11.0 |
| 14 | Armbruster, Audrey | 5 | 1 | 0.20 | 1 | 2 | .000 | 30 | 6.00 | 0 | 2 | 0.00 | 0 | 8 | 1.60 | 0 | 0 | 0 | 0.00 | 1 | 0 | 1.0 |
| 15 | Simington, Kate | 18 | 29 | 1.61 | 11 | 74 | .243 | 0 | 0.00 | 1 | 0 | 0.06 | 0 | 9 | 0.50 | 3 | 12 | 15 | 0.83 | 1 | 0 | 39.0 |
| 16 | Aksoy, Ecem | 6 | 16 | 2.67 | 5 | 43 | .256 | 1 | 0.17 | 0 | 1 | 0.00 | 1 | 3 | 0.50 | 0 | 2 | 2 | 0.33 | 0 | 0 | 17.0 |
| 19 | Hansen, Kate | 57 | 127 | 2.23 | 23 | 319 | .326 | 5 | 0.09 | 11 | 8 | 0.19 | 0 | 50 | 0.88 | 6 | 36 | 42 | 0.74 | 3 | 0 | 162.0 |
| 22 | Moore, Mia | 50 | 109 | 2.18 | 69 | 280 | .143 | 2 | 0.04 | 0 | 0 | 0.00 | 1 | 28 | 0.56 | 0 | 18 | 18 | 0.36 | 7 | 0 | 118.0 |
| 23 | McGrath, Mia | 65 | 175 | 2.69 | 80 | 566 | .168 | 27 | 0.42 | 18 | 38 | 0.28 | 8 | 165 | 2.54 | 7 | 13 | 20 | 0.31 | 4 | 0 | 206.5 |
| 24 | Martinez, Bianca | 16 | 29 | 1.81 | 11 | 73 | .247 | 1 | 0.06 | 2 | 2 | 0.13 | 0 | 5 | 0.31 | 3 | 7 | 10 | 0.63 | 2 | 0 | 37.5 |
| 28 | Gildon, McKenna | 66 | 1 | 0.02 | 1 | 6 | .000 | 88 | 1.33 | 9 | 28 | 0.14 | 21 | 259 | 3.92 | 0 | 0 | 0 | 0.00 | 0 | 0 | 10.0 |
| CLEMSON | | 66 | 855 | 12.95 | 328 | 2301 | .229 | 808 | 12.24 | 95 | 167 | 1.44 | 76 | 1038 | 15.73 | 41 | 166 | 124 | 1.88 | 30 | 0 | 1,074.0 |
| Opponents | | 66 | 767 | 11.62 | 320 | 2288 | .195 | 718 | 10.88 | 76 | 168 | 1.15 | 95 | 945 | 14.32 | 32 | 220 | 142 | 2.15 | 30 | 1 | 985.0 |

Team statistics

| | CU | OPP |
|----------------------|--------|--------|
| ATTACK | | |
| Kills | 855 | 767 |
| Errors | 328 | 320 |
| Total Attacks | 2301 | 2288 |
| Attack Pct | .229 | .195 |
| Kills/Set | 12.95 | 11.62 |
| SET | | |
| Assists | 808 | 718 |
| Attempts | 2313 | 2292 |
| Assist Pct | .349 | .313 |
| Assists/Set | 12.24 | 10.88 |
| SERVE | | |
| Aces | 95 | 76 |
| Errors | 167 | 168 |
| Attempts | 1453 | 1366 |
| Serve Pct | .885 | .877 |
| Aces/Set | 1.44 | 1.15 |
| SERVE RECEPTIONS | | |
| Errors | 76 | 95 |
| Errors/Set | 1.15 | 1.44 |
| Attempts | 1198 | 1286 |
| Reception Pct | .937 | .999 |
| DEFENSE | | |
| Digs | 1038 | 945 |
| Digs/Set | 15.73 | 14.32 |
| BLOCKING | | |
| Block solo | 41 | 32 |
| Block Assist | 166 | 220 |
| Total Blocks | 124 | 142 |
| Blocks/Set | 1.88 | 2.15 |
| Block Errors | 30 | 30 |
| Ball handling errors | 0 | 1 |
| ATTENDANCE | | |
| Total | 11788 | 8844 |
| Dates/Avg Per Date | 13/907 | 3/2948 |
| Neutral Site #/Avg | 2/85 | - |
| Current win streak | 0 | - |
| Home win streak | 0 | - |

Team Results

| Date | Opponent | | Score | Score-by-set | Att. |
|--------------|-------------------|---|-------|-------------------------------|------|
| 08/29/2025 | vs Campbell | W | 3-0 | 25-19,25-15,25-23 | 102 |
| 08/30/2025 | vs ETSU | W | 3-0 | 25-13,25-23,25-20 | 67 |
| 08/31/2025 | at South Carolina | W | 3-2 | 14-25,25-22,25-17,23-25,15-11 | 3405 |
| 09/04/2025 | N.C. A&T | W | 3-0 | 25-22,25-19,25-22 | 634 |
| 09/05/2025 | N.C. A&T | W | 3-1 | 25-16,25-13,24-26,25-18 | 1295 |
| 09/09/2025 | Georgia | W | 3-1 | 25-21,22-25,27-25,25-23 | 843 |
| 09/11/2025 | Elon | W | 3-0 | 25-13,25-14,25-10 | 302 |
| 09/12/2025 | USC Upstate | W | 3-1 | 25-11,24-26,25-18,25-23 | 830 |
| 09/13/2025 | Wofford | W | 3-2 | 25-15,25-13,20-25,24-26,16-14 | 851 |
| 09/18/2025 | Georgetown | W | 3-2 | 23-25,25-22,25-15,21-25,15-7 | 735 |
| 09/19/2025 | Norfolk St. | W | 3-1 | 25-19,23-25,25-17,25-11 | 213 |
| 09/19/2025 | Charleston So. | W | 3-1 | 23-25,25-13,25-13,25-18 | 1120 |
| * 09/26/2025 | Florida St. | L | 1-3 | 20-25,13-25,25-21,20-25 | 1500 |
| * 09/28/2025 | Miami (FL) | L | 0-3 | 19-25,18-25,18-25 | 1320 |
| * 10/03/2025 | at Pittsburgh | L | 0-3 | 17-25,10-25,21-25 | 2864 |
| * 10/05/2025 | at SMU | L | 0-3 | 16-25,18-25,15-25 | 2575 |
| * 10/10/2025 | North Carolina | L | 0-3 | 21-25,13-25,20-25 | 1314 |
| * 10/12/2025 | Duke | L | 0-3 | 23-25,19-25,22-25 | 831 |