

2025 CLEMSON GYMNASTICS

MEET-BY-MEET BREAKDOWN

DATE	MEET	TEAM	VAULT	BARs	BEAM	FLOOR	TOTAL	
1.10	Sprouts Collegiate Quad	CLEMSON	48.800	49.025	48.775	48.750	195.350	
		Michigan	48.950	48.975	48.775	49.225	195.925	
		Arizona	49.025	49.075	49.225	48.500	195.825	
		NC State	48.875	48.850	48.600	48.675	195.000	
1.17	at Pitt*	CLEMSON	49.025	48.825	48.950	48.700	195.500	
		Pittsburgh	48.875	48.650	48.850	48.750	195.100	
1.26	at Cal*	CLEMSON	48.900	49.125	49.025	49.175	196.225	
		California	49.175	49.400	48.875	49.475	196.925	
1.31	vs. Pitt*	CLEMSON	48.875	48.475	48.775	49.225	195.350	
		Pittsburgh	48.850	48.725	48.950	48.750	195.275	
2.9	at North Carolina*	CLEMSON	48.750	49.250	48.725	49.075	195.800	
		North Carolina	48.850	49.200	49.100	49.425	196.575	
2.14	vs. NC State*	CLEMSON	48.850	49.000	48.975	49.125	195.950	
		NC State	49.000	49.075	48.800	49.175	196.050	
2.23	vs. Stanford*	CLEMSON	49.050	49.250	48.975	49.300	196.575	
		Stanford	49.000	49.350	49.175	49.400	196.925	
2.28	vs. NH / TWU	CLEMSON	49.150	49.125	48.475	49.075	195.825	
		Texas Woman's	48.975	48.325	47.500	49.175	193.975	
		New Hampshire	48.750	48.100	47.750	47.725	192.325	
3.9	at GWU/Penn State	CLEMSON	49.225	48.825	49.050	49.375	196.475	
		Penn State	49.275	49.325	49.000	49.075	196.675	
		GWU	48.975	49.050	47.800	49.425	195.250	
3.14	vs. Penn State	CLEMSON	48.975	49.050	49.075	49.350	196.450	
		Penn State	48.850	49.100	49.225	48.975	196.150	
3.22	ACC Championship	CLEMSON	49.000	49.000	48.875	49.300	196.175	
		Pittsburgh	48.975	49.175	48.725	48.925	195.800	
		(Quad 2)	Stanford	49.375	49.650	49.175	49.575	197.775
		California	49.300	49.625	49.250	49.475	197.650	
		North Carolina	49.425	49.475	48.975	49.350	197.225	
NC State	49.150	49.350	48.775	49.225	196.500			
4.3	NCAA Regional (I)	CLEMSON	49.000	49.000	48.875	49.300	196.175	
		Rutgers	48.725	48.675	47.425	49.05	193.875	
4.4	NCAA Regional (II)	CLEMSON	48.575	48.900	49.325	49.075	195.875	
		Florida	49.500	49.575	49.575	49.575	198.225	
		Oregon State	48.975	49.175	49.375	49.525	197.050	
		NC State	49.100	48.850	49.200	49.125	196.275	
SEASON HIGHS		CLEMSON	49.225	49.250	49.325	49.375	196.575	
		OPPONENT	49.500	49.650	49.575	49.575	198.225	
SEASON AVERAGES		CLEMSON	48.906	48.967	48.908	49.138	195.919	
		OPPONENT	49.041	49.076	48.787	49.112	196.015	

202 CLEMSON GYMNASTICS



MOLLY ARNOLD

R-Junior • Bloomington, Minn.

CAREER HIGHS *at Utah State

Vault	Bars	Beam	Floor	All-Around
9.975	9.825*	---	9.950	---

SEASON HIGHS

Vault	Bars	Beam	Floor	All-Around
9.800	---	---	9.900	---

DATE	MEET	VAULT	BAR	BEAM	FLOOR	AA
1.10	at Sprouts Quad	9.625	---	---	9.775	---
1.17	at Pitt*	---	---	---	9.700	---
1.26	at Cal*	---	---	---	9.825	---
1.31	Pitt*	---	---	---	9.600	---
2.9	at UNC*	---	---	---	9.675	---
2.14	NC State*	---	---	---	9.800	---
2.23	Stanford*	---	---	---	9.900	---
2.28	UNH/TWU	9.725	---	---	9.700	---
3.9	at GWU/PSU	---	---	---	9.875	---
3.14	Penn State	9.800	---	---	9.875	---
3.22	ACC Championship	9.150	---	---	9.825	---
4.3	NCAA Regionas (I)	---	---	---	9.800	---
4.4	NCAA Regionals (II)	---	---	---	---	---

^ event winner

PLAYER NOTES

Yurchenko Half (9.95 SV at Sprouts)

Yurchenko 1.5 (10.0 SV vs UNH/TWU)

- 2024 WCGA Scholastic All-American (4.0); 2024 CSC Academic All-District
- 2024 All-ACC Selection (vault, floor); 2024 ACC All-Championship Team selection (vault, floor)
- 2024 NCAA Individual Selection (vault, floor)
- Has two career event wins (1 floor, 1 vault)
- ACC Specialist of the Week (Mar.18, 2024)
- Recorded a career-high 9.975 on vault at UCLA (2024)
- Transfer from Utah State



TAKODA BERRY

Sophomore • Newport Beach, Calif.

CAREER HIGHS

Vault	Bars	Beam	Floor	All-Around
---	9.875	---	9.675	---

SEASON HIGHS

Vault	Bars	Beam	Floor	All-Around
---	9.875	---	9.675	---

DATE	MEET	VAULT	BAR	BEAM	FLOOR	AA
1.10	at Sprouts Quad	---	9.800	---	---	---
1.17	at Pitt*	---	9.825^	---	---	---
1.26	at Cal*	---	9.725	---	---	---
1.31	Pitt*	---	9.775	---	---	---
2.9	at UNC*	---	9.800	---	---	---
2.14	NC State*	---	---	---	---	---
2.23	Stanford*	---	9.875	---	---	---
2.28	UNH/TWU	---	9.725	---	---	---
3.9	at GWU/PSU	---	9.700	---	---	---
3.14	Penn State	---	9.750	---	---	---
3.22	ACC Championship	---	9.700	---	---	---
4.3	NCAA Regionas (I)	---	9.650	---	---	---
4.4	NCAA Regionals (II)	---	9.825	---	9.675	---

^ event winner

PLAYER NOTES

- Earned first-career event win at Pitt (bars)



TRINITY BROWN

R-Junior • Upper Marlboro, Md.

CAREER HIGHS *at Utah State

Vault	Bars	Beam	Floor	All-Around
9.900	9.875	---	9.925*	---

SEASON HIGHS

Vault	Bars	Beam	Floor	All-Around
9.825	---	---	9.750	---

DATE	MEET	VAULT	BAR	BEAM	FLOOR	AA
1.10	at Sprouts Quad	9.825	---	---	---	---
1.17	at Pitt*	9.825^	---	---	9.750	---
1.26	at Cal*	9.800	---	---	---	---
1.31	Pitt*	9.825	---	---	---	---
2.9	at UNC*	---	---	---	---	---
2.14	NC State*	---	---	---	---	---
2.23	Stanford*	---	---	---	---	---
2.28	UNH/TWU	---	---	---	---	---
3.9	at GWU/PSU	---	---	---	---	---
3.14	Penn State	---	---	---	---	---
3.22	ACC Championship	---	---	---	---	---
4.3	NCAA Regionas (I)	---	---	---	---	---
4.4	NCAA Regionals (II)	---	---	---	---	---

^ event winner

PLAYER NOTES

Will miss remainder of 2025 following achilles injury vs Pitt

- Transfer from Utah State
- Has three event wins (vault)
- Set a career-high on vault (9.900) in Clemson's win over Pitt; won event
- 2022 Academic All-Mountain Rim Gymnastics Conference



KATE BRYANT

Sophomore • Littleton, Colo.

CAREER HIGHS

Vault	Bars	Beam	Floor	All-Around
9.800	9.575	---	---	---

SEASON HIGHS

Vault	Bars	Beam	Floor	All-Around
9.800	9.575	---	---	---

DATE	MEET	VAULT	BAR	BEAM	FLOOR	AA
1.10	at Sprouts Quad	---	---	---	---	---
1.17	at Pitt*	---	---	---	---	---
1.26	at Cal*	---	---	---	---	---
1.31	Pitt*	---	---	---	---	---
2.9	at UNC*	9.750	---	---	---	---
2.14	NC State*	9.600	---	---	---	---
2.23	Stanford*	9.700	---	---	---	---
2.28	UNH/TWU	---	---	---	---	---
3.9	at GWU/PSU	9.800	---	---	---	---
3.14	Penn State	---	---	---	---	---
3.22	ACC Championship	---	5.075	---	---	---
4.3	NCAA Regionas (I)	9.625	8.850	---	---	---
4.4	NCAA Regionals (II)	9.725	9.575	---	---	---

^ event winner

PLAYER NOTES

- Recorded a career-high 9.8 on vault at George Washington
- Competed on bars for the first time at ACCs; completed a routine for the first time at NCAAs

2024 CLEMSON GYMNASTICS



SIERRA CHURCH

Sophomore • Lincolnton, N.C.

CAREER HIGHS

Vault	Bars	Beam	Floor	All-Around
---	---	9.925	---	---

SEASON HIGHS

Vault	Bars	Beam	Floor	All-Around
---	---	9.900	---	---

DATE	MEET	VAULT	BAR	BEAM	FLOOR	AA
1.10	at Sprouts Quad	---	---	9.750	---	---
1.17	at Pitt*	---	---	9.850	---	---
1.26	at Cal*	---	---	9.150	---	---
1.31	Pitt*	---	---	9.775	---	---
2.9	at UNC*	---	---	9.775	---	---
2.14	NC State*	---	---	9.900^	---	---
2.23	Stanford*	---	---	9.725	---	---
2.28	UNH/TWU	---	---	9.425	---	---
3.9	at GWU/PSU	---	---	9.875^	---	---
3.14	Penn State	---	---	9.700	---	---
3.22	ACC Championship	---	---	9.775	---	---
4.3	NCAA Regionals (I)	---	---	9.825^	---	---
4.4	NCAA Regionals (II)	---	---	9.900	---	---

^ event winner

PLAYER NOTES

- Earned a \$10,000 surprise scholarship from Walk-Ons Sports Bistreaux in the offseason
- Has four event wins (beam)
- Earned her first event win in the pink meet against North Carolina on Feb. 23, 2024 with a career-high 9.925 on beam.
- Earned her second-career event win in the 2025 pink meet, against NC State with a 9.900 on beam.



BRIE CLARK

R-Junior • Daphne, Ala.

CAREER HIGHS

Vault	Bars	Beam	Floor	All-Around
9.825*	---	9.925	9.950	---

SEASON HIGHS

Vault	Bars	Beam	Floor	All-Around
---	---	9.900	9.950	---

DATE	MEET	VAULT	BAR	BEAM	FLOOR	AA
1.10	at Sprouts Quad	---	---	9.800	9.300	---
1.17	at Pitt*	---	---	9.225	9.625	---
1.26	at Cal*	---	---	9.800	9.900^	---
1.31	Pitt*	---	---	9.900^	9.925^	---
2.9	at UNC*	---	---	9.825	9.950^	---
2.14	NC State*	---	---	9.675	9.925^	---
2.23	Stanford*	---	---	9.825	9.925	---
2.28	UNH/TWU	---	---	9.875^	9.800	---
3.9	at GWU/PSU	---	---	9.800	9.925	---
3.14	Penn State	---	---	9.825	9.925^	---
3.22	ACC Championship	---	---	9.750	9.900	---
4.3	NCAA Regionals (I)	---	---	9.750	9.900^	---
4.4	NCAA Regionals (II)	---	---	9.875	9.900	---

^ event winner

PLAYER NOTES

- 2025 All-ACC Honoree (floor); 2025 ACC All-Tournament Honoree (floor)
- First gymnast to **successfully complete** the Biles 1 in a collegiate meet (Feb. 28, 2025)
- 2025 NCAA Individual Selection (floor)
- 2024 WCGA Scholastic All-American
- 2024 All-ACC Selection (floor); 2024 NCAA Individual Selection (floor)
- 2x ACC Specialist of the week (2024)
- Has 13 event wins in her Clemson career (10 floor, 3 beam)
- Transfer from Utah State



HANNAH CLARK

Freshman • Huntington Beach, Calif.

CAREER HIGHS

Vault	Bars	Beam	Floor	All-Around
---	9.900	9.825	---	---

SEASON HIGHS

Vault	Bars	Beam	Floor	All-Around
---	9.900	9.825	---	---

DATE	MEET	VAULT	BAR	BEAM	FLOOR	AA
1.10	at Sprouts Quad	---	9.250	---	---	---
1.17	at Pitt*	---	9.800	---	---	---
1.26	at Cal*	---	9.875	---	---	---
1.31	Pitt*	---	9.275	---	---	---
2.9	at UNC*	---	9.875^	---	---	---
2.14	NC State*	---	9.825	---	---	---
2.23	Stanford*	---	9.875	---	---	---
2.28	UNH/TWU	---	9.875^	---	---	---
3.9	at GWU/PSU	---	9.750	9.750	---	---
3.14	Penn State	---	9.825	9.775	---	---
3.22	ACC Championship	---	9.825	8.850	---	---
4.3	NCAA Regionals (I)	---	9.825^	9.750	---	---
4.4	NCAA Regionals (II)	---	9.900	9.825	---	---

^ event winner

PLAYER NOTES

- 2025 ACC Newcomer Watch List
- Earned first-career event win at North Carolina
- Has three event wins (bars)
- ACC All-Tournament Team (bars)
- 2025 NCAA Individual Selection (bars)
- Earned Clemson's only score of 9.9 or higher on bars in 2025



MAGGIE HOLMAN

Sophomore • Raleigh, N.C.

CAREER HIGHS

Vault	Bars	Beam	Floor	All-Around
9.850	---	9.775	9.900	---

SEASON HIGHS

Vault	Bars	Beam	Floor	All-Around
9.850	---	9.775	9.850	---

DATE	MEET	VAULT	BAR	BEAM	FLOOR	AA
1.10	at Sprouts Quad	9.525	---	---	9.650	---
1.17	at Pitt*	9.825^	---	---	---	---
1.26	at Cal*	9.775	---	---	9.625	---
1.31	Pitt*	9.850^	---	---	9.850	---
2.9	at UNC*	9.725	---	---	9.825	---
2.14	NC State*	9.750	---	---	8.775	---
2.23	Stanford*	9.850	---	---	9.625	---
2.28	UNH/TWU	9.850	---	---	9.825	---
3.9	at GWU/PSU	9.875	---	9.775	9.800	---
3.14	Penn State	9.800	---	---	9.850	---
3.22	ACC Championship	9.750	---	---	9.850	---
4.3	NCAA Regionals (I)	9.750	---	---	9.850	---
4.4	NCAA Regionals (II)	9.725	---	---	9.800	---

^ event winner

PLAYER NOTES

- **Front Handspring Pike Half (10.0)**
- 2024 All ACC-Tournament (vault)
- Named ACC Newcomer of the Week on Feb. 5, 2024
- Tied for her first-career event win at Pitt (vault)
- Earned her second-career event win vs Pitt (vault)

2024 CLEMSON GYMNASTICS



EVE JACKSON

R-Senior • Los Angeles, Calif.

CAREER HIGHS

Vault	Bars	Beam	Floor	All-Around
9.900	9.900	9.775	9.950	39.200

SEASON HIGHS

Vault	Bars	Beam	Floor	All-Around
9.825	9.875	---	9.950	---

DATE	MEET	VAULT	BAR	BEAM	FLOOR	AA
1.10	at Sprouts Quad	---	9.875	---	9.750	---
1.17	at Pitt*	9.825^	9.750	---	9.775	---
1.26	at Cal*	9.625	9.800	---	9.825	---
1.31	Pitt*	9.700	9.775	---	9.825	---
2.9	at UNC*	9.725	9.825	---	9.175	---
2.14	NC State*	9.825	9.825	---	9.800	---
2.23	Stanford*	9.800	9.775	---	9.950^	---
2.28	UNH/TWU	9.825	9.825	---	9.875^	---
3.9	at GWU/PSU	9.775	9.775	---	9.900	---
3.14	Penn State	9.825	9.850^	---	9.875	---
3.22	ACC Championship	9.700	9.800	---	9.825	---
4.3	NCAA Regionas (I)	9.625	9.725	---	9.900^	---
4.4	NCAA Regionals (II)	9.075	9.750	---	9.850	---

^ event winner

PLAYER NOTES

Yurchenko 1.5 (10.0 SV)

- Has six event wins at Clemson (3 bars, 1 vault, 2 floor)
- Earned a career-high 9.95 on floor vs Stanford (2/23)
- 2024 WCGA Scholastic All-American; Transfer from Utah State
- Recorded a career-high on vault and then career-high on floor at UCLA (9.900; 9.925) (2024)
- Father, Byron, played in the NFL, CFL and World League
- Niece of DeSean Jackson



QUINN KUHL

Sophomore • Holly Springs, N.C.

CAREER HIGHS

Vault	Bars	Beam	Floor	All-Around
9.875	9.875	9.875	---	---

SEASON HIGHS

Vault	Bars	Beam	Floor	All-Around
9.875	9.875	9.875	---	---

DATE	MEET	VAULT	BAR	BEAM	FLOOR	AA
1.10	at Sprouts Quad	9.775	9.775	9.750	---	---
1.17	at Pitt*	9.800	9.750	9.825	---	---
1.26	at Cal*	9.775	9.875	9.825	---	---
1.31	Pitt*	9.725	8.975	8.900	---	---
2.9	at UNC*	9.700	9.850	9.500	---	---
2.14	NC State*	9.700	9.800	9.450	---	---
2.23	Stanford*	9.725	---	9.875	---	---
2.28	UNH/TWU	9.725	---	9.775	---	---
3.9	at GWU/PSU	9.875	9.800	9.850	---	---
3.14	Penn State	9.725	9.825	9.825	---	---
3.22	ACC Championship	9.775	9.850	9.700	---	---
4.3	NCAA Regionas (I)	9.650	9.750	9.675	---	---
4.4	NCAA Regionals (II)	9.750	9.225	9.825	---	---

^ event winner

PLAYER NOTES

Yurchenko Full (9.95 SV)

- Earned a spot in the vault, bars, and beam lineups this season
- 2024 WCGA Scholastic All-American
- Set a career-high on beam vs Stanford (2025)
- Set a career-high on vault at GWU Tri-Meet (2025)



LILY KURRACK

Sophomore • Tampa, Fla.

CAREER HIGHS

Vault	Bars	Beam	Floor	All-Around
---	---	---	---	---

SEASON HIGHS

Vault	Bars	Beam	Floor	All-Around
---	---	---	---	---

DATE	MEET	VAULT	BAR	BEAM	FLOOR	AA
1.10	at Sprouts Quad	---	---	---	---	---
1.17	at Pitt*	---	---	---	---	---
1.26	at Cal*	---	---	---	---	---
1.31	Pitt*	---	---	---	---	---
2.9	at UNC*	---	---	---	---	---
2.14	NC State*	---	---	---	---	---
2.23	Stanford*	---	---	---	---	---
2.28	UNH/TWU	---	---	---	---	---
3.9	at GWU/PSU	---	---	---	---	---
3.14	Penn State	---	---	---	---	---
3.22	ACC Championship	---	---	---	---	---
4.3	NCAA Regionas (I)	---	---	---	---	---
4.4	NCAA Regionals (II)	---	---	---	---	---

^ event winner

PLAYER NOTES

- 2024 WCGA Scholastic All-American (4.0)



GRACE LACROSSE

Sophomore • Lake Zurich, Ill.

CAREER HIGHS

Vault	Bars	Beam	Floor	All-Around
---	---	---	---	---

SEASON HIGHS

Vault	Bars	Beam	Floor	All-Around
---	---	---	---	---

DATE	MEET	VAULT	BAR	BEAM	FLOOR	AA
1.10	at Sprouts Quad	---	---	---	---	---
1.17	at Pitt*	---	---	---	---	---
1.26	at Cal*	---	---	---	---	---
1.31	Pitt*	---	---	---	---	---
2.9	at UNC*	---	---	---	---	---
2.14	NC State*	---	---	---	---	---
2.23	Stanford*	---	---	---	---	---
2.28	UNH/TWU	---	---	---	---	---
3.9	at GWU/PSU	---	---	---	---	---
3.14	Penn State	---	---	---	---	---
3.22	ACC Championship	---	---	---	---	---
4.3	NCAA Regionas (I)	---	---	---	---	---
4.4	NCAA Regionals (II)	---	---	---	---	---

^ event winner

PLAYER NOTES

- 2024 WCGA Scholastic All-American (4.0)

2024 CLEMSON GYMNASTICS



LILLY LIPPEATT

R-Sophomore • Mason, Ohio

CAREER HIGHS

Vault	Bars	Beam	Floor	All-Around
---	9.900	9.900	9.925	---

SEASON HIGHS

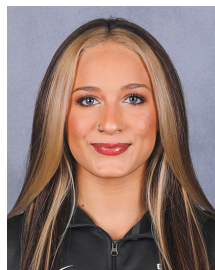
Vault	Bars	Beam	Floor	All-Around
---	9.850	9.825	9.825	---

DATE	MEET	VAULT	BAR	BEAM	FLOOR	AA
1.10	at Sprouts Quad	---	9.825	9.775	9.825	---
1.17	at Pitt*	---	9.575	9.750	9.725	---
1.26	at Cal*	---	9.700	9.750	9.775	---
1.31	Pitt*	---	9.850^	9.825	9.800	---
2.9	at UNC*	---	9.850	9.825	9.825	---
2.14	NC State*	---	9.775	9.700	9.800	---
2.23	Stanford*	---	9.800	9.800	9.675	---
2.28	UNH/TWU	---	9.850	9.800	9.750	---
3.9	at GWU/PSU	---	---	---	---	---
3.14	Penn State	---	---	9.800	9.825	---
3.22	ACC Championship	---	---	---	---	---
4.3	NCAA Regionals (I)	---	---	---	---	---
4.4	NCAA Regionals (II)	---	---	---	---	---

^ event winner

PLAYER NOTES

- Earned first-career event win vs Pitt (bars)
- First-ever recipient of Clemson's "Lance Corporal Noah Lippeatt Esprit de Corps Award"
- 2024 ACC Newcomer of the Year
- 2024 All-ACC Selection (bars)
- 2024 ACC All-Championship Team (bars, beam)
- ACC Newcomer of the Week (Jan. 15; Jan. 22; Mar. 18, 2024)
- 2024 CSC Academic All-District
- 2024 WCGA Scholastic All-American
- First high school signee in program history (enrolled in fall 2022)



KIELYN McCRIGHT

R-Junior • Parkland, Fla.

CAREER HIGHS

Vault	Bars	Beam	Floor	All-Around
---	---	9.925	---	---

SEASON HIGHS

Vault	Bars	Beam	Floor	All-Around
---	---	9.875	---	---

DATE	MEET	VAULT	BAR	BEAM	FLOOR	AA
1.10	at Sprouts Quad	---	---	9.650	---	---
1.17	at Pitt*	---	---	9.725	---	---
1.26	at Cal*	---	---	9.850	---	---
1.31	Pitt*	---	---	---	---	---
2.9	at UNC*	---	---	9.350	---	---
2.14	NC State*	---	---	---	---	---
2.23	Stanford*	---	---	---	---	---
2.28	UNH/TWU	---	---	---	---	---
3.9	at GWU/PSU	---	---	---	---	---
3.14	Penn State	---	---	---	---	---
3.22	ACC Championship	---	---	9.875	---	---
4.3	NCAA Regionals (I)	---	---	9.025	---	---
4.4	NCAA Regionals (II)	---	---	9.875	---	---

^ event winner

PLAYER NOTES

- 2025 ACC All-Tournament (beam)
- 2024 All-ACC Selection (beam)
- 2024 ACC All-Championship Team (beam)
- 2024 NCAA Individual Selection (beam)
- Tied a career-high with a 9.925 on beam at UCLA (2024)
- Earned her first event win as a Tiger vs Pitt with a 9.900 on beam (2024)
- Transfer from Utah State



MADISON MINNER

R-Junior • Anderson, S.C.

CAREER HIGHS

Vault	Bars	Beam	Floor	All-Around
9.900	---	---	9.900	---

SEASON HIGHS

Vault	Bars	Beam	Floor	All-Around
9.875	---	---	9.900	---

DATE	MEET	VAULT	BAR	BEAM	FLOOR	AA
1.10	at Sprouts Quad	9.775	---	---	9.750	---
1.17	at Pitt*	9.750	---	---	9.750	---
1.26	at Cal*	9.800	---	---	9.850	---
1.31	Pitt*	9.775	---	---	9.825	---
2.9	at UNC*	9.850^	---	---	9.800	---
2.14	NC State*	9.825	---	---	9.800	---
2.23	Stanford*	9.825	---	---	9.850	---
2.28	UNH/TWU	9.875^	---	---	9.825	---
3.9	at GWU/PSU	9.850	---	---	9.875	---
3.14	Penn State	9.750	---	---	9.800	---
3.22	ACC Championship	9.875	---	---	9.900	---
4.3	NCAA Regionals (I)	9.775	---	---	9.825	---
4.4	NCAA Regionals (II)	9.675	---	---	9.825	---

^ event winner

PLAYER NOTES

Tucked Yurchenko 1.5 (10.0 SV)

- 2025 NCAA Individual selection (vault)
- 2025 ACC All-Tournament Team (floor)
- 2024 WCGA Scholastic All-American
- 2024 ACC All-Championship Team (vault)
- Walk-on from nearby Anderson, S.C.
- Set a career-high on vault, 9.900, at the TWU Quad meet (2024)
- Set a career-high on floor, 9.900, vs Air Force (2024)
- Earned first-career event win vs UNC
- Has two event wins (vault)



DANIKA NIELSEN

Freshman • Gilbert, Ariz.

CAREER HIGHS

Vault	Bars	Beam	Floor	All-Around
---	---	9.825	---	---

SEASON HIGHS

Vault	Bars	Beam	Floor	All-Around
---	---	9.825	---	---

DATE	MEET	VAULT	BAR	BEAM	FLOOR	AA
1.10	at Sprouts Quad	---	---	9.700	---	---
1.17	at Pitt*	---	---	9.800	---	---
1.26	at Cal*	---	---	9.800	---	---
1.31	Pitt*	---	---	9.800	---	---
2.9	at UNC*	---	---	9.800	---	---
2.14	NC State*	---	---	9.825	---	---
2.23	Stanford*	---	---	8.925	---	---
2.28	UNH/TWU	---	---	8.950	---	---
3.9	at GWU/PSU	---	---	---	---	---
3.14	Penn State	---	---	---	---	---
3.22	ACC Championship	---	---	---	---	---
4.3	NCAA Regionals (I)	---	---	---	---	---
4.4	NCAA Regionals (II)	---	---	---	---	---

^ event winner

PLAYER NOTES

- Earned a season-high 9.825 on beam vs NC State

2024 CLEMSON GYMNASTICS



LAUREN RUTHERFORD

Senior • Roswell, Ga.

CAREER HIGHS ^{*at NC State}

Vault	Bars	Beam	Floor	All-Around
9.925	9.925*	---	9.950	---

SEASON HIGHS

Vault	Bars	Beam	Floor	All-Around
---	9.850	---	---	---

DATE	MEET	VAULT	BAR	BEAM	FLOOR	AA
1.10	at Sprouts Quad	---	---	---	---	---
1.17	at Pitt*	---	---	---	---	---
1.26	at Cal*	---	---	---	---	---
1.31	Pitt*	---	---	---	---	---
2.9	at UNC*	---	9.850	---	---	---
2.14	NC State*	---	9.725	---	---	---
2.23	Stanford*	---	9.825	---	---	---
2.28	UNH/TWU	---	9.825	---	---	---
3.9	at GWU/PSU	---	9.800	---	---	---
3.14	Penn State	---	9.650	---	---	---
3.22	ACC Championship	---	9.825	---	---	---
4.3	NCAA Regionas (I)	---	9.775	---	---	---
4.4	NCAA Regionals (II)	---	9.850	---	---	---

^ event winner

PLAYER NOTES

- 2024 WCGA Scholastic All-American; Has five event wins at Clemson (four vault, one floor)
- 2024 ACC All-Championship Team (floor)
- Set a career-high on vault with a 9.925 at North Carolina, tied it at home vs UNC (2024)
- Earned her first event win as a Tiger vs William & Mary with a 9.825 on vault; Clemson's first-ever event winner (vault, vs William & Mary)
- Tied a career-high with a 9.950 (tied for Clemson's highest floor score of the season) to win floor vs NC State (tie with Molly Arnold)



TARA WALSH

Graduate • Waterford, Mich.

CAREER HIGHS ^{*at Michigan State // **at Auburn}

Vault	Bars	Beam	Floor	All-Around
9.875	---	9.875	9.725	---

SEASON HIGHS

Vault	Bars	Beam	Floor	All-Around
9.875	---	9.875	9.725	---

DATE	MEET	VAULT	BAR	BEAM	FLOOR	AA
1.10	at Sprouts Quad	9.800	---	---	---	---
1.17	at Pitt*	9.750	---	---	---	---
1.26	at Cal*	9.750	---	---	---	---
1.31	Pitt*	9.700	---	9.475	---	---
2.9	at UNC*	9.700	---	---	---	---
2.14	NC State*	9.750	---	9.875	---	---
2.23	Stanford*	9.850	---	9.750	---	---
2.28	UNH/TWU	9.875^	---	9.600	---	---
3.9	at GWU/PSU	9.825	---	9.600	9.725	---
3.14	Penn State	9.800	---	9.850	---	---
3.22	ACC Championship	9.900	---	9.775	9.825	---
4.3	NCAA Regionas (I)	9.800^	---	9.800	---	---
4.4	NCAA Regionals (II)	9.700	---	9.850	9.700	---

^ event winner

PLAYER NOTES

Yurchenko Full (9.95 SV) (at Sprouts / at Pitt)
Yurchenko 1.5 (10.0 SV)

- 2025 ACC All-Tournament Team (vault)
- 2024 WCGA Scholastic All-American
- Transfer from Michigan State (23/24)
- Started career at Auburn (21/22)
- Earned a career-high 9.875 on beam vs NC State (2/14)
- Has two event wins (vault)



TRINITY WEBB

Sophomore • Smithville, Mo.

CAREER HIGHS

Vault	Bars	Beam	Floor	All-Around
---	9.900	---	---	---

SEASON HIGHS

Vault	Bars	Beam	Floor	All-Around
---	---	---	---	---

DATE	MEET	VAULT	BAR	BEAM	FLOOR	AA
1.10	at Sprouts Quad	---	---	---	---	---
1.17	at Pitt*	---	---	---	---	---
1.26	at Cal*	---	---	---	---	---
1.31	Pitt*	---	---	---	---	---
2.9	at UNC*	---	---	---	---	---
2.14	NC State*	---	---	---	---	---
2.23	Stanford*	---	---	---	---	---
2.28	UNH/TWU	---	---	---	---	---
3.9	at GWU/PSU	---	---	---	---	---
3.14	Penn State	---	---	---	---	---
3.22	ACC Championship	---	---	---	---	---
4.3	NCAA Regionas (I)	---	---	---	---	---
4.4	NCAA Regionals (II)	---	---	---	---	---

^ event winner

PLAYER NOTES

- Out for the season (shoulder)
- January 2024 enrollee
- Set a career-high with a 9.900 on bars vs Air Force (2024)



REBECCA WELLS

Graduate • Smyrna, Tenn.

CAREER HIGHS ^{*at Utah State}

Vault	Bars	Beam	Floor	All-Around
9.900	9.875	9.950	9.950	39.550

SEASON HIGHS

Vault	Bars	Beam	Floor	All-Around
---	9.875	---	---	---

DATE	MEET	VAULT	BAR	BEAM	FLOOR	AA
1.10	at Sprouts Quad	---	9.750	---	---	---
1.17	at Pitt*	---	9.700	---	---	---
1.26	at Cal*	---	9.850	---	---	---
1.31	Pitt*	---	9.800	---	---	---
2.9	at UNC*	---	---	---	---	---
2.14	NC State*	---	9.775	---	---	---
2.23	Stanford*	---	9.875	---	---	---
2.28	UNH/TWU	---	9.750	---	---	---
3.9	at GWU/PSU	---	9.650	---	---	---
3.14	Penn State	---	9.800	---	---	---
3.22	ACC Championship	---	---	---	---	---
4.3	NCAA Regionas (I)	---	---	---	---	---
4.4	NCAA Regionals (II)	---	---	---	---	---

^ event winner

PLAYER NOTES

- 2024, 2025 AAI Award Nominee
- Has 9 individual event titles at Clemson (6 beam, 1 vault, 2 floor)
- Clemson's first-ever all-around winner (vs William & Mary) and currently the only all-around winner in program history (7)
- 2025 ACC Preseason Watch List
- 2024 All-ACC Selection (all-around, vault, beam)
- 2024 ACC All-Championship Team (all-around, floor, vault)
- 2024 NCAA Individual Selection (All-Around)
- 2024 CSC Academic All-District
- 2024 WCGA Scholastic All-American
- Set a career-high with a 9.950 on floor vs North Carolina (event win) (2024)
- Set a career-high with a 9.950 on beam at NC State, tied a career-high with a 9.900 on vault during the same meet (2024)
- Set a career-high with a 39.550 all-around score at NC State (Feb. 17, 2024)