



2024 MATCH NOTES

CLEMSON WOMEN'S SOCCER

1 COLLEGE CUP • 2 ACC CHAMPIONSHIPS • 6 NCAA QUARTERFINALS • 9 SWEET SIXTEENS • 24 NCAA TOURNAMENTS • 20 ALL-AMERICANS

Game 4: Clemson Tigers (2-1) vs Furman Paladins (1-3)

August 29, 2024 • Greenville, S.C. • Stone Stadium

2024 Schedule

Date	Day	Network	(Rk.)	Opponent	Result/Time (ET)
8/4	Sun.	---		Georgia (exhibition)	-
8/10	Sat.	---		UNCW (exhibition)	-
8/15	Thurs.	SEC	at	Auburn	L, 0-4
8/18	Sun.	ACCNX		High Point	W, 2-0
8/23	Fri.	ACCNX		West Virginia	W, 3-0
8/29	Thurs.	ESPN+	at	Furman	7:00 p.m.
9/1	Sun.	--	at	Campbell	4:00 p.m.
9/5	Thurs.		at	South Carolina	6:00pm
9/8	Sun.		at	Charlotte	6:00 p.m.
9/12	Thurs.		*	Virginia Tech	7:00 p.m.
9/19	Thurs.		*	Duke	7:00 p.m.
9/27	Fri.		*at	Florida State	7:00 p.m.
10/3	Thurs.		*at	Pitt	7:00 p.m.
10/6	Sun.		*	Boston College	1:00 p.m.
10/12	Sat.		*	Miami	7:00 p.m.
10/17	Thurs.		*at	North Carolina	7:00 p.m.
10/20	Sun.		*at	NC State	1:00 p.m.
10/25	Fri.		*at	Virginia	7:00 p.m.
10/31	Thurs.		*	Louisville	7:00 p.m.

* - ACC Match

Home matches in **BOLD**

PROGRAM FACTS

Clemson University	
Nickname	Tigers
Location	Clemson, S.C.
Colors	Tiger Orange & Regalia
Founded	1889
Enrollment	25,822
President	Dr. James P. Clements (Maryland-Baltimore County '85)
Director of Athletics	Graham Neff (Georgia Tech '06)
Facility/Year (Capacity)	Historic Riggs Field/1915 (6,500)
All-Time Stats	
Overall Record	347-217-56 30th Season
ACC Record	117-133-25 30th Season
Goals	1,252 43.03/year avg

NCAA TOURNAMENT APPEARANCES

24 Total: 1994-2007, 2014-2023

SWEET SIXTEEN APPEARANCES

9 Total: 1997-2001, 2006, 2016, 2020, 2023

ELITE EIGHT APPEARANCES

6 Total: 1997, 1999, 2000, 2006, 2020, 2023

COLLEGE CUP APPEARANCES

1 Total: 2023

2023 SEASON STAT LEADERS

Season Stat Leaders

GOALS	10 - Makenna Morris
ASSISTS	8 - Jenna Tobia, Dani Davis
POINTS	26 - Makenna Morris
SHOTS	59 - Caroline Conti
SAVES	64 - Halle Mackiewicz
MINUTES	2231 - Halle Mackiewicz

Single Game Leaders

GOALS	3 - Sami Meredith
ASSISTS	3 - Megan Bornkamp, Jenna Tobia (2x), Makenna Morris
POINTS	6 - Sami Meredith
SHOTS	10 - Renee Lyles
SAVES	5 - Halle Mackiewicz (4x)

Individual Single-Season Records

GOALS	24 - Carmie Landeen	1994
ASSISTS	13 - Sheri Bueter, Renee Guion	1994; 2021
POINTS	57 - Carmie Landeen	1994
SAVES	119 - Ashley Phillips	2006

Clemson

Record:	2-1-0
Home:	2-0-0
Away:	0-1-0
Neutral:	0-0-0
Non-Conf.:	2-1-0
ACC Record:	0-0-0

2023 Record: 18-4-4 (7-2-1 ACC)

Head Coach: Eddie Radwanski // 14th season

Assoc. HC: Jeff Robbins // 14th season

Asst. Coach: Siri Mullinix // 14th season

Asst. Coach: Allison Wetherington // 2nd season

The Series

CU Record	15-4-1
Last Meeting	2023
Trend	CU W3
Last match:	CU, 4-1

Furman

Record:	1-3-0
Home:	0-2-0
Away:	1-1-0

2023 Record: 7-5-7 (3-1-5)

Head Coach: Andrew Burr

Assoc. Head Coach: April Raymer

Asst. Coach: Brendan Smith

Need to Know

Program set to celebrate 30 Years of Women's Soccer at Clemson

• The 2024 season will be one for the history books as the program is celebrating 30 Years of women's soccer at Clemson. The 30th anniversary also comes as the athletic department is honoring 50 Years of women's sports at Clemson.

Freshman Kendall Bodak Scores First Collegiate Goal Against West Virginia

• In the match against West Virginia, newcomer Kendall Bodak was first to score as she netted her first collegiate goal around the 12th minute mark of the first-half. Bodak was also accredited with an assist on Jenna Tobia's goal so the freshman finished the match with three total points as she now leads the team in points with four.

Tigers secure a 3-0 home win over Mountaineers

• In their second home match of the season, the Tigers secured a massive 3-0 victory over West Virginia to pick up their second shutout of the year. Scoring for Clemson was Kendall Bodak, Jenna Tobia and Mackenzie Duff. Goalkeeper, Nona Reason was tabbed with the clean sheet.

Clemson ranked No. 13 by Top Drawer Soccer

• Following their performance against West Virginia, the Tigers have been tabbed No. 13 in the Top Drawer Soccer weekly rankings for week two. Clemson moved up from their previous No. 16 ranking from week one.

TIGERS IN THE PROS

Active NWSL/Professional Players

Mariana Speckmaier	Wellington Phoenix FC
Sam Staab	Chicago Red Stars
Kailen Sheridan	San Diego Wave
Sandy MacIver	Manchester City
Tabitha Nyberg	IK Vifjan Strågnäs
Hensley Hancuff	North Carolina Courage
Renee Guion	Fortuna Hjørring
Maliah Morris	Western Sydney Wanderers FC
Makenna Morris	Washington Spirit
Hal Hershfeldt	Washington Spirit
Caroline Conti	Bay FC
Halle Mackiewicz	Kansas City Current

Active National Players

Kailen Sheridan	Canada WNT
Sandy MacIver	England WNT
Mariana Speckmaier	Venezuela WNT
Hal Hershfeldt	USA WNT

QUICK FACTS

MEDIA SERVICES

CLEMSON ATHLETIC COMMUNICATIONS

Women's Soccer Contact	Autumn Froitland
Email	afroitl@clemsontigers.com
Phone	623-628-706
Women's Soccer Secondary	Chandler Simpson
Email	mcsimp2@g.clemson.edu
Assoc. AD - Communications	Jeff Kallin
Email	kallin@clemsontigers.com

CLEMSON ATHLETICS

Website	ClemsonTigers.com
Ticket Office Phone	1-800-CLEMSON
Social Media	@ClemsonWSoccer (Twitter)
	@ClemsonWSoccer (Instagram)
	@ClemsonTigers (Main Athletics)

ACC MEDIA RELATIONS

Brandon McGinnis is the women's soccer athletic communications contact at the ACC office. He can be reached at 336-369-4642(office) or via email at bmcginnis@theacc.org.

CREDENTIALS

Members of the working press can request media credentials on a season, or match-by-match, basis. All requests must be sent to **Autumn Froitland** via email. Season credentials may be requested at any point throughout the season. Those interested in a single-match credential must communicate the request at least one day prior to the match.

INTERVIEW

Interviews are available at any point throughout the week with select players and **Head Coach Eddie Radwanski**. Contact **Autumn Froitland** via phone or email to coordinate all interview requests. Players are available at the discretion of the women's soccer staff upon request.

THE LAST TIME THE TIGERS...

EVENT	DATE	OPP. (Results, Score)
Scored 0 goals	08/15/24	vs. Auburn (L, 0-4)
Scored 1 goal or more	08/18/24	vs. High Point (W, 2-0)
Scored 2 goals or more	11/25/23	vs. Penn State (W, 2-1)
Scored 3 goals or more	08/23/24	vs. West Virginia (W, 3-0)
Scored 4 goals or more	09/30/23	vs. Syracuse (W, 5-1)
Scored 5 goals or more	09/30/23	vs. Syracuse (W, 5-1)
Scored 6 goals or more	08/20/23	vs. Gardner-Webb (W, 9-0)
Scored 7 goals or more	08/20/23	vs. Gardner-Webb (W, 9-0)
Scored 8 goals or more	08/20/23	vs. Gardner-Webb (W, 9-0)
Scored 9 goals or more	08/20/23	vs. Gardner-Webb (W, 9-0)
Scored 10 goals or more	09/22/13	vs. Alabama A&M (W, 14-0)
Allowed 0 goals	08/23/24	vs. West Virginia (W, 3-0)
Allowed 1 goal	11/25/23	vs. Penn State (W, 2-1)
Allowed 2 goals	12/01/23	vs. Florida State (L, 0-2)
Allowed 3 goals	09/15/23	vs. Florida State (L, 4-2)
Allowed 4 goals	08/15/24	vs. Auburn (L, 0-4)
Allowed 5 goals	11/22/19	vs. UCLA (L, 0-5)
Scored a goal 10:00 or earlier	09/21/23	vs. Miami (W, 5-0)
Scored a goal 80:00 or later	11/19/23	vs. Georgia (T-1-1 (CU advances 5-3 on PKs))
Margin is 1 goal	09/08/22	vs. West Virginia (W, 1-0)
Margin is 2 goals	12/01/23	vs. Florida State (L, 0-2)
Margin is 3+ goals	09/22/22	vs. Wake Forest (L, 4-1)
3 or more Clemson players scored	08/23/24	vs. West Virginia (W, 3-0) 3 players
Attempted 0-9 shots or more	09/15/22	vs. Notre Dame (W, 2-0) 14 shots
Attempted 10-19 shots or more	8/18/24	vs. High Point (W, 2-0) 16 shots
Attempted 20-29 shots or more	10/05/23	vs. Virginia (T, 1-1) 20 shots
Attempted 30+ shots	08/20/23	vs. Gardner-Webb (W, 9-0)- 40 shots
Allowed 0-9 shots	09/22/22	vs. Wake Forest (L, 4-1) 10 shots
Allowed 10-19 shots	12/01/23	vs. Florida State (L, 0-2) 11 shots
Allowed 20-29 shots	08/28/22	vs. Alabama (L, 3-0) - 20 shots
Allowed 30+ shots	09/27/12	vs. Duke (L, 0-3) - 31 shots
Won in OT/2OT	04/03/21	vs. Alabama (W, 1-0 [OT])
Lost in OT/2OT	10/10/21	vs. Notre Dame (L, 1-2 [2OT])
Tied in OT/2OT	11/19/23	vs. Georgia (T-1-1 (CU advances 5-3 on PKs))
Competed in a PK Shootout	11/19/23	vs. Georgia (T-1-1 (CU advances 5-3 on PKs))
Won a PK Shootout	11/19/23	vs. Georgia (T-1-1 (CU advances 5-3 on PKs))
Played 13+ players	09/22/22	vs. Wake Forest (L, 4-1) 14 players
Played 16+ players	09/08/22	vs. West Virginia (W, 1-0)- 16 players
Played 18+ players	12/01/23	vs. Florida State (L, 0-2) - 19 players
Beat a United Soccer Coach No. 1 team	09/13/00	vs. North Carolina (W, 2-1)
Beat a United Soccer Coach Top 5 team	11/25/23	vs. Penn State (W, 2-1) #5
Beat a United Soccer Coach Top 10 team	09/07/23	vs. Arkansas (W, 1-0) #7
Beat a United Soccer Coach Top 25 team	10/22/23	vs. Pitt (W, 1-0) - #18

ACC PRESEASON COACHES POLL

Team	Points (First-Place Votes)
1. Florida State	255 (15)
2. Stanford	235 (2)
3. Notre Dame	211
4. North Carolina	187
5. Clemson	186
6. Virginia	177
7. Duke	175
8. Pitt	168
9. Wake Forest	160
10. Virginia Tech	116
11. Cal	111
12. NC State	85
13. Louisville	80
14(t). Boston College	50
14(t). SMU	50
16. Miami	44
17. Syracuse	22

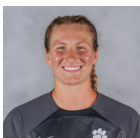
TIGERS IN THE POLLS

Week	USC	TDS	RPI
Preseason	#5	-	-
Week One	NR	#16	-
Week Two	NR	#13	-



2024 CLEMSON TIGERS WOMEN'S SOCCER

1



NONA REASON (REE-zin)

R-So. • Goalkeeper • 5-10 • Noblesville, Ind. • North Carolina

	GMS	STARTS	SAVES	GA	SAVE %	SHUTOOTS	W/L/T
2024	3	3	8	2	.800	2	2/1/0
Career (CU-UNC)	5	4	9	3	.750	3	3/1/0

Season Highs: Saves (5) *shutouts are solo

- Played in first match for Clemson against Auburn
- Transfer from North Carolina
- Member of the 2021 U.S. Soccer Women's Youth National U20 training camp roster
- Played on the 2020 U.S. U16 national team
- Received the Golden Glove award as the best goalkeeper during the 2019 U15 U.S. Soccer Development Academy playoffs for San Diego Surf

2



KENDALL BODAK

Fr. • Midfield • 5-2 • Monson, Mass.

	GMS	STARTS	GOALS	ASSISTS	POINTS	SOG
2024	3	3	1	2	4	1
Career	3	3	1	2	4	1

Season Highs: Goals (1), Assists (2), Points (4), Shots on Goal (1)

- Earned first collegiate start against Auburn
- Scored her first collegiate against West Virginia

3



LAYNE ST. GEORGE ("LANE")

Sr. • Defender • 5-5 • Seattle, Wash.

	GMS	STARTS	GOALS	ASSISTS	POINTS	SOG
2023	14	4	0	0	0	1
Career	39	21	0	2	2	4

Season Highs: Goals (0), Assists (0), Points (0), Shots on Goal (0)

- 2x All-ACC Academic Team
- 2021 Gatorade Washington Girls Soccer Player of the Year
- Member of the U.S. U-17 WNT player pool (UEFA Development Tournament in Prague, Czech Republic) that was crowned 2019 Champions
- Part of the program's first-ever College Cup appearance in the 2023 season

5



EMILY BROUGH (BRUFF)

Jr. • Midfield • 5-8 • Liverpool, England

	GMS	STARTS	GOALS	ASSISTS	POINTS	SOG
2024	3	3	--	1	1	1
Career	46	19	4	5	13	18

Season Highs: Goals (0), Assists (1), Points (1), Shots on Goal (1)

- 2x All-ACC Academic Team
- Liverpool Sport Woman of the Year (prior to Clemson)
- Made her professional debut for Liverpool FC and is the second youngest player to play for the club
- Part of the program's first-ever College Cup appearance in the 2023 season

6



ELEANOR HAYS

So. • Defender • 5-9 • Lewisville, Texas

	GMS	STARTS	GOALS	ASSISTS	POINTS	SOG
2024	2	1	--	--	--	--
Career	3	1	0	0	0	0

Season Highs: Goals (0), Assists (0), Points (0), Shots on Goal (0)

- Earned first collegiate start against Auburn
- Part of the program's first-ever College Cup appearance in the 2023 season

7



DANI DAVIS

So. • Midfield • 5-9 • Port Washington, N.Y.

	GMS	STARTS	GOALS	ASSISTS	POINTS	SOG
2024	3	3	--	1	1	1
Career	29	29	1	9	11	12

Season Highs: Goals (0), Assists (0), Points (0), Shots on Goal (0)

- ACC All Tournament Team Selection
- ACC All-Freshman Team Selection
- All-ACC Academic Team Selection
- Top Drawer Soccer Freshman Best XI First Team
- Midseason Top 100 Freshman (4)
- Member of Tiger Leadership Academy
- Part of the program's first-ever College Cup appearance in the 2023 season

8



JENNA TOBIA (TOE-bee-uh)

So. • Forward • 5-5 • Warren, N.J.

	GMS	STARTS	GOALS	ASSISTS	POINTS	SOG
2024	3	3	1	--	2	4
Career	29	26	5	8	18	20

Season Highs: Goals (1), Assists (0), Points (2), Shots on Goal (4)

- ACC All-Freshman Team Selection
- All-ACC Academic Team Selection
- Top Drawer Soccer Freshman Best XI Freshman First Team Selection
- Midseason Top 100 Freshman (7)
- Part of the program's first-ever College Cup appearance in the 2023 season

9



MACKENZIE DUFF

Sr. • Defender • 5-11 • St. Louis, Mo.

	GMS	STARTS	GOALS	ASSISTS	POINTS	SOG
2024	3	2	1	--	2	2
Career	46	27	7	1	15	8

Season Highs: Goals (1), Assists (0), Points (2), Shots on Goal (2)

- 2x All-ACC Academic Team
- ACC All-Tournament Team Selection
- ACC Player of the Week (9/26/23)
- Part of the program's first-ever College Cup appearance in the 2023 season

10



RENEE LYLES (Rhymes with "Miles")

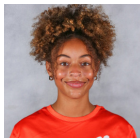
Sr. • Forward • 5-5 • Atlanta, Ga.

	GMS	STARTS	GOALS	ASSISTS	POINTS	SOG
2023	26	16	6	5	17	21
Career	62	51	17	13	47	59

Season Highs: Goals (0), Assists (0), Points (0), Shots on Goal (0)

- 3x All-ACC Academic Team
- ACC Player of the Week (10/24/23)
- ACC All-Freshman Team (2021)
- Part of the program's first-ever College Cup appearance in the 2023 season

11



TATUM SHORT

So. • Forward • 5-5 • Las Vegas, Nev.

	GMS	STARTS	GOALS	ASSISTS	POINTS	SOG
2024	3	2	--	--	--	--
Career	29	24	3	4	10	--

Season Highs: Goals (0), Assists (0), Points (0), Shots on Goal (0)

- ACC All-Freshman Team Selection
- Top Drawer Soccer Midseason Top 100 Freshman Selection (22)
- Member of Tiger Leadership Academy
- Part of the program's first-ever College Cup appearance in the 2023 season

12



SYDNEY MINARIK (min-AIR-ick)

So. • Forward • 5-5 • Las Vegas, Nev.

	GMS	STARTS	GOALS	ASSISTS	POINTS	SOG
2024	3	3	--	--	--	--
Career	60	20	5	4	14	18

Season Highs: Goals (0), Assists (0), Points (0), Shots on Goal (0)

- 2x All-ACC Academic Team Selection
- Part of the 2023-24 POWER Women's Leadership Academy
- Member of Paw Pals
- Member of Student Athlete Advisory Committee (SAAC)
- Part of the program's first-ever College Cup appearance in the 2023 season

2024 CLEMSON TIGERS WOMEN'S SOCCER

13



KAM PICKETT

Gr. • Defender • 5-0 • Santa Barbara, Calif. • Pepperdine

	GMS	STARTS	GOALS	ASSISTS	POINTS	SOG
2024	3	3	--	--	--	--
Career (CU-PEP)	52	51	1	2	4	6

Season Highs: Goals (0), Assists (0), Points (0), Shots on Goal (0)

- Played in first match for Clemson against Auburn
- Transfer from Pepperdine
- 2022 All-WCC Honorable Mention
- 2021 WCC All-Freshman Team
- Pepperdine Scholar-Athlete

15



ELLA JOHNSON

Fr. • Forward • 5-5 • Wrightsville Beach, N.C.

	GMS	STARTS	GOALS	ASSISTS	POINTS	SOG
2024	3	1	--	--	--	--
Career	3	1	--	--	--	--

Season Highs: Goals (0), Assists (0), Points (0), Shots on Goal (0)

- Played in first match for Clemson against Auburn

16



ELLA HAUSER (WHO-zer)

Sr. • Defender • 5-5 • Seattle, Wash.

	GMS	STARTS	GOALS	ASSISTS	POINTS	SOG
2024	3	--	--	--	--	--
Career	27	2	0	0	0	0

Season Highs: Goals (0), Assists (0), Points (0), Shots on Goal (0)

- Mother Sheri (Bueter) was an All-American for Clemson women's soccer and the program's all-time assists leader
- Father Scott played on the baseball team at Clemson
- Brother Nolan is a freshman kicker for the Clemson football team
- Part of the program's first-ever College Cup appearance in the 2023 season

17



ANNA CASTENFELT (Cast-IN-felt)

Fr. • Midfield • 5-7 • Paradise Valley, Ariz.

	GMS	STARTS	GOALS	ASSISTS	POINTS	SOG
2024	3	1	--	2	2	3
Career	3	1	--	2	2	3

Season Highs: Goals (0), Assists (0), Points (0), Shots on Goal (0)

- Played in first match for Clemson against Auburn
- Had her first collegiate start against West Virginia

18



MARIA MANOUSOS (Ma-NEW-sos)

Jr. • Forward • 5-6 • Weddington, N.C.

	GMS	STARTS	GOALS	ASSISTS	POINTS	SOG
2024	3	3	--	1	1	--
Career	42	7	4	3	11	8

Season Highs: Goals (1), Assists (1), Points (1), Shots on Goal (1)

- Part of the program's first-ever College Cup appearance in the 2023 season

19



ANNA RYDIN (RIE-din)

Fr. • Defender • 6-0 • Chapel Hill, N.C.

	GMS	STARTS	GOALS	ASSISTS	POINTS	SOG
2024	1	--	--	--	--	--
Career	1	--	--	--	--	--

Season Highs: Goals (0), Assists (0), Points (0), Shots on Goal (0)

21



EMILIA ERIKSEN

Fr. • Defender • 5-7 • Los Gatos, Calif.

	GMS	STARTS	GOALS	ASSISTS	POINTS	SOG
2024	2	--	--	--	--	--
Career	2	--	--	--	--	--

Season Highs: Goals (0), Assists (0), Points (0), Shots on Goal (0)

- Played in first match for Clemson against Auburn

22



GABBY GAMBINO (Gam-BEE-no)

Jr. • Midfield • 5-5 • Lewiston, N.Y.

	GMS	STARTS	GOALS	ASSISTS	POINTS	SOG
2023	8	2	0	2	2	1
Career	15	2	0	2	2	4

Season Highs: Goals (0), Assists (0), Points (0), Shots on Goal (0)

- Part of the program's first-ever College Cup appearance in the 2023 season

23



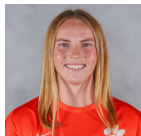
ALLIE SERLENGA (SIR-ling-uh)

Fr. • Forward • 5-7 • Mount Laurel, N.J.

	GMS	STARTS	GOALS	ASSISTS	POINTS	SOG
2024	2	--	--	--	--	--
Career	2	--	--	--	--	--

Season Highs: Goals (0), Assists (0), Points (0), Shots on Goal (0)

24



MEGAN BORNKAMP

Gr. • Forward • 5-9 • Mooresville, N.C.

	GMS	STARTS	GOALS	ASSISTS	POINTS	SOG
2024	3	1	--	--	--	--
Career	84	81	24	20	68	64

Season Highs: Goals (1), Assists (0), Points (0), Shots on Goal (0)

- 4x All-ACC (Third Team in 2023)
- ACC Postgraduate Scholar
- Third Team All-America (2021)
- 4x All-ACC Academic Team
- Part of the program's first-ever College Cup appearance in the 2023 season
- Part of the 2022-23 POWER Women's Leadership Academy

25



DANI LYNCH

So. • Defender • 5-7 • Los Angeles, Calif.

	GMS	STARTS	GOALS	ASSISTS	POINTS	SOG
2023	5	0	0	1	1	0
Career	5	0	0	1	1	0

Season Highs: Goals (0), Assists (0), Points (0), Shots on Goal (0)

- Sister, Ally, also plays for the Tigers
- Part of the program's first-ever College Cup appearance in the 2023 season

2024 CLEMSON TIGERS WOMEN'S SOCCER

26



ADDY HOLGORSE

Jr. • Goalkeeper • 5-6 • Charlotte, N.C.

	GMS	STARTS	SAVES	GA	SAVE %	SHUTOUTS	W/L/T
2023	3	1	0	1	.000	1	1/0/0
Career	3	1	0	1	.000	1	1/0/0

Season Highs: Saves (), Goals (), Assists () *shutouts are solo

• Part of the program's first-ever College Cup appearance in the 2023 season

27



ERIN SHERDAN (SURE-din)

So. • Forward • 5-3 • Melbourne, Fla.

	GMS	STARTS	GOALS	ASSISTS	POINTS	SOG
2024	2	--	--	--	--	--
Career	2	--	--	--	--	--

Season Highs: Goals (), Assists (), Points (), Shots on Goal ()

• Played in first match for Clemson against Auburn
• Part of the program's first-ever College Cup appearance in the 2023 season

29



JORDAN THOMPSON

Gr. • Forward • 5-6 • Lee, N.H. • College of Charleston

	GMS	STARTS	GOALS	ASSISTS	POINTS	SOG
2024	2	--	1	--	2	2
Career (CU+CoFC)	23	3	2	0	4	8

Season Highs: Goals (1), Assists (), Points (2), Shots on Goal (2)

• Transfer from College of Charleston

30



CHRISTIAN BRATHWAITE (Br-ATH-wait)

So. • Midfield • 5-6 • Charlotte, N.C. • Georgia

	GMS	STARTS	GOALS	ASSISTS	POINTS	SOG
2024	2	1	--	--	--	--
Career (CU+UGA)	22	10	1	1	3	3

Season Highs: Goals (), Assists (), Points (), Shots on Goal ()

• Played in first match for Clemson against Auburn
• Transfer from Georgia
• Ranked No. 70 on Top Drawer Soccer Top 100 Midseason Freshman List
• Named to SEC Academic Honor Roll, Dean's List, and J. Reid Parker Director of Athletics Honor Roll

34



ALLY LYNCH

Sr. • Goalkeeper • 5-8 • Los Angeles, Calif.

	GMS	STARTS	SAVES	GA	SAVE %	SHUTOUTS	W/L/T
2024	1	0	0	2	.000	0	0/0/0
Career	6	0	1	2	.333	0	0/0/0

Season Highs: Goals (), Assists (), Points (), Shots on Goal ()

• Sister, Dani, also plays for the Tigers
• Part of the program's first-ever College Cup appearance in the 2023 season
• Part of the 2023-24 POWER Women's Leadership Academy

COACHES AND STAFF



EDDIE RADWANSKI (Rad-wan-skee)

Head Coach
14th season
2016 ACC Coach of the Year
Clemson Record: 145-85-33
Overall Record: 284-150-46



JEFF ROBBINS

Associate Head Coach
14th season



SIRI MULLINIX

Assistant/Goalkeeper Coach
14th season



ALLISON WETHERINGTON

Assistant Coach
2nd season



**2024-25 Clemson Women's Soccer
Individual Statistics
All games**

Game Records

Overall	Conference	Home	Away	Neutral
2 - 1 - 0	0 - 0 - 0	2 - 0 - 0	0 - 1 - 0	0 - 0 - 0

Team Box Score

No.	Player	GP-GS	MIN	G	A	PTS	SH	SH%	SOG	SOG%	YC	RC	GWG	PK-ATT	FG	OT	HAT	GTG	FOUL
2	Bodak, Kendall	3-3	220	1	2	4	2	.500	2	1.000	0	0	1	0-0	1	0	0	0	1
8	Tobia, Jenna	3-3	209	1	0	2	9	.111	4	.444	0	0	0	0-0	0	0	0	0	0
9	Duff, Mackenzie	3-2	224	1	0	2	3	.333	2	.667	0	0	0	0-0	0	0	0	0	0
29	Thompson, Jordan	2-0	44	1	0	2	2	.500	2	1.000	0	0	0	0-0	0	0	0	0	0
17	Castenfelt, Anna	3-1	140	0	2	2	5	.000	3	.600	0	0	0	0-0	0	0	0	0	1
7	Davis, Dani	3-3	270	0	1	1	5	.000	1	.200	1	0	0	0-0	0	0	0	0	0
5	Brough, Emily	3-3	221	0	1	1	3	.000	1	.333	0	0	0	0-0	0	0	0	0	1
18	Manousos, Maria	3-3	209	0	1	1	1	.000	0	.000	0	0	0	0-0	0	0	0	0	2
24	Bornkamp, Megan	3-1	135	0	0	0	3	.000	0	.000	0	0	0	0-0	0	0	0	0	3
11	Short, Tatum	3-2	195	0	0	0	2	.000	0	.000	0	0	0	0-0	0	0	0	0	1
13	Pickett, Kam	3-3	177	0	0	0	1	.000	0	.000	0	0	0	0-0	0	0	0	0	2
23	Serlenga, Allie	2-0	30	0	0	0	1	.000	0	.000	0	0	0	0-0	0	0	0	0	0
16	Hauser, Ella	3-0	52	0	0	0	1	.000	0	.000	0	0	0	0-0	0	0	0	0	1
6	Hays, Eleanor	2-1	47	0	0	0	0	.000	0	.000	0	0	0	0-0	0	0	0	0	0
30	Brathwaite, Christian	2-1	99	0	0	0	0	.000	0	.000	0	0	0	0-0	0	0	0	0	1
1	Reason, Nona	3-3	225	0	0	0	0	.000	0	.000	0	0	0	0-0	0	0	0	0	0
15	Johnson, Ella	3-1	104	0	0	0	0	.000	0	.000	0	0	0	0-0	0	0	0	0	2
34	Lynch, Ally	1-0	45	0	0	0	0	.000	0	.000	0	0	0	0-0	0	0	0	0	0
21	Erikson, Emilia	2-0	89	0	0	0	0	.000	0	.000	0	0	0	0-0	0	0	0	0	0
27	Sherden, Erin	2-0	25	0	0	0	0	.000	0	.000	0	0	0	0-0	0	0	0	0	0
12	Minarik, Sydney	3-3	204	0	0	0	0	.000	0	.000	1	0	0	0-0	0	0	0	0	0
19	Rydin, Anna	1-0	14	0	0	0	0	.000	0	.000	0	0	0	0-0	0	0	0	0	0
Total		3	-	5	7	17	38	.132	15	.395	2	0	-	0-0	2	0	0	-	15
Opponents		3	-	4	2	10	22	.182	11	.500	0	0	-	0-0	1	0	0	-	30

No.	Goalie	GP-GS	Goal Average			Saves		Record			
			MINS	GA	GA AVG	SAVES	PCT	W	L	T	SHO/CBO
1	Reason, Nona	3-3	225:00	2	0.80	8	.800	2	1	0	2/0
34	Lynch, Ally	1-0	45:00	2	4.00	0	.000	0	0	0	0/0
TM	TEAM	-	00:00	0	0.00	0	.000	0	0	0	0/0
Total		3	270:00	4	1.33	8	.667	2	1	0	2
Opponents		3	270:00	5	1.67	11	.688	1	2	0	1

Goals by Periods

Team	1st	2nd	OT1	OT2	TOTAL
CU	4	1	0	0	5
Opponents	2	2	0	0	4

Corners by Periods

Team	1st	2nd	OT1	OT2	TOTAL
CU	11	5	0	0	16
Opponents	4	5	0	0	9

Shots by Periods

Team	1st	2nd	OT1	OT2	TOTAL
CU	21	17	0	0	38
Opponents	12	10	0	0	22

Fouls by Periods

Team	1st	2nd	OT1	OT2	TOTAL
CU	8	7	0	0	15
Opponents	17	13	0	0	30



2024 CLEMSON TIGERS WOMEN'S SOCCER



#1 NONA REASON
GK • 5-10 • R-So.



#2 KENDALL BODAK
M • 5-2 • Fr.



#3 LAYNE ST. GEORGE
D • 5-5 • Sr.



#5 EMILY BROUGH
M • 5-8 • Jr.



#6 ELEANOR HAYS
D • 5-9 • So.



#7 DANI DAVIS
M • 5-9 • So.



#8 JENNA TOBIA
F • 5-5 • So.



#9 MACKENZIE DUFF
D • 5-11 • Sr.



#10 RENEE LYLES
F • 5-5 • Sr.



#11 TATUM SHORT
F • 5-5 • So.



#12 SYDNEY MINARIK
F • 5-4 • Sr.



#13 KAM PICKETT
D • 5-0 • Gr.



#15 ELLA JOHNSON
F • 5-5 • Fr.



#16 ELLA HAUSER
M • 5-6 • Sr.



#17 ANNA CASTENFELT
M • 5-7 • Fr.



#18 MARIA MANOUSOS
F • 5-6 • Jr.



#19 ANNA RYDIN
D • 6-0 • Fr.



#21 EMILIA ERIKSEN
D • 5-7 • Fr.



#22 GABBY GAMBINO
M • 5-5 • Jr.



#23 ALLIE SERLENGA
F • 5-7 • Fr.



#24 MEGAN BORNKAMP
F • 5-9 • Gr.



#25 DANI LYNCH
D • 5-8 • So.



#26 ADDY HOLGORSON
GK • 5-6 • Jr.



#27 ERIN SHERDEN
F • 5-3 • So.



#29 JORDAN THOMPSON
F • 5-6 • Gr.



#30 CHRISTIAN BRATHWAITE
M • 5-6 • So.



#34 ALLY LYNCH
GK • 5-8 • Sr.



EDDIE RADWANSKI
Head Coach • 14th Season