

2024 CLEMSON GYMNASTICS

MEET-BY-MEET BREAKDOWN

DATE	MEET	TEAM	VAULT	BARS	BEAM	FLOOR	TOTAL
1.12	vs. William & Mary	CLEMSON	48.875	49.225	48.950	49.275	196.325
		William & Mary	47.800	47.600	48.225	46.425	190.050
1.21	vs. Pitt*	CLEMSON	49.150	48.925	48.750	49.375	196.200
		Pitt	48.750	48.625	48.300	49.100	194.775
1.26	at North Carolina*	CLEMSON	48.950	49.150	49.200	49.250	196.550
		North Carolina	48.750	47.675	48.675	49.150	194.250
2.2	vs. NC State*	CLEMSON	49.050	49.150	47.875	49.525	195.600
		NC State	49.050	49.050	48.850	49.350	196.300
2.9	at Pitt*	CLEMSON	49.050	48.925	49.125	49.275	196.375
		Pitt	49.000	48.875	48.850	49.175	195.900
2.17	at NC State*	CLEMSON	48.800	49.375	48.625	49.200	196.000
		NC State	49.250	49.450	49.375	49.500	197.575
2.23	vs. North Carolina*	CLEMSON	49.200	49.250	49.300	49.600	197.350
		North Carolina	49.150	49.150	48.750	48.450	195.500
3.3	TWU Quad Meet	CLEMSON	49.225	49.200	48.575	49.350	196.350
		Oklahoma	49.525	49.625	49.675	49.475	198.300
		Texas Women's University	49.150	49.125	49.100	48.900	196.275
		Penn	48.875	48.600	48.525	48.825	194.825
3.8	vs. Air Force	CLEMSON	49.175	49.400	49.450	49.575	197.600
		Air Force	48.500	49.025	48.200	48.925	194.650
3.16	at UCLA	CLEMSON	49.450	48.700	49.300	49.375	196.825
		UCLA	49.475	49.625	49.675	49.775	198.550
3.23	ACC Championship	CLEMSON	49.200	49.225	48.475	49.525	196.425
		Pitt	48.650	49.250	49.050	49.350	196.300
		North Carolina	48.875	49.225	48.975	49.225	196.300
		NC State	49.150	49.400	49.450	49.550	197.550
SEASON HIGHS		CLEMSON	49.450	49.400	49.450	49.600	197.600
		OPPONENT	49.525	49.625	49.675	49.775	198.550
SEASON AVERAGES		CLEMSON	49.102	49.139	48.875	49.393	196.509
		OPPONENT	48.930	48.953	48.912	49.012	195.807

2024 CLEMSON GYMNASTICS



MOLLY ARNOLD

R-Sophomore • Bloomington, Minn.

CAREER HIGHS

Vault	Bars	Beam	Floor	All-Around
9.975	9.825*	---	9.950	---

SEASON HIGHS

Vault	Bars	Beam	Floor	All-Around
9.975	---	---	9.950	---

DATE	MEET	VAULT	BAR	BEAM	FLOOR	AA
1.12	William & Mary	9.775	---	---	9.875	---
1.21	Pitt*	9.800	---	---	9.875	---
1.26	at UNC*	9.775	---	---	9.875	---
2.2	NC State*	9.850	---	---	9.950^	---
2.9	at Pitt*	9.775	---	---	9.825	---
2.17	at NC State*	9.925^	---	---	9.875	---
2.23	UNC*	9.800	---	---	9.925	---
3.3	at TWU/Oklahoma/Penn	9.850	---	---	9.875	---
3.8	Air Force	9.875	---	---	9.925	---
3.16	at UCLA	9.975	---	---	9.875	---
3.24	ACC Championship	9.850	---	---	9.950	---

^event winner

PLAYER NOTES

- All-ACC Selection on vault and floor
- ACC All-Championship Team selection on vault and floor
- NCAA Individual Competitor Selection on vault and floor
- ACC Specialist of the Week (9.18)
- Tied a career-high with a 9.95 on floor at ACCs
- Recorded a career-high 9.975 on vault at UCLT
- Earned her first event win (tie with Lauren Rutherford) on vault vs NC State
- Tallied a career-high 9.925 on vault at NC State for her second event win of the year
- Transfer from Utah State
- 2022 Academic All-Mountain Rim Gymnastics Conference



TAKODA BERRY

Freshman • Newport Beach, Calif.

CAREER HIGHS

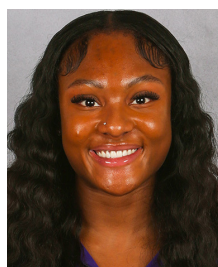
Vault	Bars	Beam	Floor	All-Around
---	---	---	---	---

SEASON HIGHS

Vault	Bars	Beam	Floor	All-Around
---	---	---	---	---

DATE	MEET	VAULT	BAR	BEAM	FLOOR	AA
1.12	William & Mary	---	---	---	---	---
1.21	Pitt*	---	---	---	---	---
1.26	at UNC*	---	---	---	---	---
2.2	NC State*	---	---	---	---	---
2.9	at Pitt*	---	---	---	---	---
2.17	at NC State*	---	---	---	---	---
2.23	UNC*	---	---	---	---	---
3.3	at TWU/Oklahoma/Penn	---	---	---	---	---
3.8	Air Force	---	---	---	---	---
3.16	at UCLA	---	---	---	---	---
3.24	ACC Championship	---	---	---	---	---

PLAYER NOTES



TRINITY BROWN

R-Sophomore • Upper Marlboro, Md.

CAREER HIGHS

Vault	Bars	Beam	Floor	All-Around
9.900	9.875	---	9.925*	---

SEASON HIGHS

Vault	Bars	Beam	Floor	All-Around
9.900	9.875	---	9.825	---

DATE	MEET	VAULT	BAR	BEAM	FLOOR	AA
1.12	William & Mary	9.800	9.800	---	---	---
1.21	Pitt*	9.900^	9.650	---	9.800	---
1.26	at UNC*	9.750	9.650	---	---	---
2.2	NC State*	9.775	---	---	9.800	---
2.9	at Pitt*	9.875	9.775	---	9.825	---
2.17	at NC State*	9.800	9.875	---	9.050	---
2.23	UNC*	9.875	9.850	---	---	---
3.3	at TWU/Oklahoma/Penn	9.800	---	---	---	---
3.8	Air Force	---	---	---	---	---
3.16	at UCLA	---	---	---	---	---
3.24	ACC Championship	---	---	---	---	---

^event winner

PLAYER NOTES

- Transfer from Utah State
- 2022 Academic All-Mountain Rim Gymnastics Conference
- Recorded a then-career-high 9.800 on bars in Clemson's inaugural meet vs. William & Mary
- Set a career-high on vault (9.900) in Clemson's win over Pitt; won event
- Recorded a career-high 9.875 on bars at NC State on Feb. 17



KATE BRYANT

Freshman • Littleton, Colo.

CAREER HIGHS

Vault	Bars	Beam	Floor	All-Around
9.775	---	---	---	---

SEASON HIGHS

Vault	Bars	Beam	Floor	All-Around
9.775	---	---	---	---

DATE	MEET	VAULT	BAR	BEAM	FLOOR	AA
1.12	William & Mary	---	---	---	---	---
1.21	Pitt*	---	---	---	---	---
1.26	at UNC*	---	---	---	---	---
2.2	NC State*	---	---	---	---	---
2.9	at Pitt*	9.700	---	---	---	---
2.17	at NC State*	---	---	---	---	---
2.23	UNC*	9.750	---	---	---	---
3.3	at TWU/Oklahoma/Penn	---	---	---	---	---
3.8	Air Force	9.775	---	---	---	---
3.16	at UCLA	---	---	---	---	---
3.24	ACC Championship	---	---	---	---	---

PLAYER NOTES

- Recorded a season-high 9.775 on vault vs Air Force

2024 CLEMSON GYMNASTICS



SIERRA CHURCH

Freshman • Lincolnton, N.C.

CAREER HIGHS

Vault	Bars	Beam	Floor	All-Around
---	---	9.925	---	---

SEASON HIGHS

Vault	Bars	Beam	Floor	All-Around
---	---	9.925	---	---

DATE	MEET	VAULT	BAR	BEAM	FLOOR	AA
1.12	William & Mary	---	---	---	---	---
1.21	Pitt*	---	---	---	---	---
1.26	at UNC*	---	---	---	---	---
2.2	NC State*	---	---	9.650	---	---
2.9	at Pitt*	---	---	9.800	---	---
2.17	at NC State*	---	---	9.825	---	---
2.23	UNC*	---	---	9.925^	---	---
3.3	at TWU/Oklahoma/Penn	---	---	9.675	---	---
3.8	Air Force	---	---	9.875	---	---
3.16	at UCLA	---	---	9.875	---	---
3.24	ACC Championship	---	---	9.200	---	---

^event winner

PLAYER NOTES

- Set a then-career-high with 9.825 on beam at NC State
- Earned her first event win against North Carolina on February 23 with a career-high 9.925.



BRIE CLARK

R-Sophomore • Daphne, Ala.

CAREER HIGHS

Vault	Bars	Beam	Floor	All-Around
9.825*	---	9.925	9.950	---

SEASON HIGHS

Vault	Bars	Beam	Floor	All-Around
---	---	9.925	9.950	---

DATE	MEET	VAULT	BAR	BEAM	FLOOR	AA
1.12	William & Mary	---	---	9.850	9.900^	---
1.21	Pitt*	---	---	9.200	9.925^	---
1.26	at UNC*	---	---	9.900^	9.925^	---
2.2	NC State*	---	---	---	---	---
2.9	at Pitt*	---	---	9.300	9.900^	---
2.17	at NC State*	---	---	9.875	9.875	---
2.23	UNC*	---	---	9.775	9.925	---
3.3	at TWU/Oklahoma/Penn	---	---	9.700	9.900	---
3.8	Air Force	---	---	9.925	9.950^	---
3.16	at UCLA	---	---	9.700	9.750	---
3.24	ACC Championship	---	---	9.225	9.800	---

^event winner

PLAYER NOTES

- All-ACC Selection (floor)
- NCAA Individual Competitor Selection on floor
- 2x ACC Specialist of the week
- Missed NC State meet due to illness
- Has won 5 floor events and one beam event for Clemson
- Tied a career-high on beam and floor vs Air Force
- Transfer from Utah State
- Women's Collegiate Gymnastics Association Regular Season Second Team All-American (2022)
- Mountain Rim Gymnastics Conference Floor Specialist of the Year (2022)



KAITLIN DEGUZMAN

Graduate • Dallas, Texas

CAREER HIGHS

Vault	Bars	Beam	Floor	All-Around
---	9.925	9.800*	9.800*	---

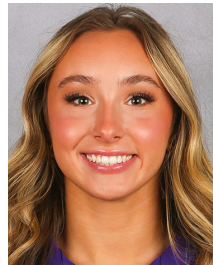
SEASON HIGHS

Vault	Bars	Beam	Floor	All-Around
---	9.925	---	---	---

DATE	MEET	VAULT	BAR	BEAM	FLOOR	AA
1.12	William & Mary	---	9.875	---	---	---
1.21	Pitt*	---	9.800	---	---	---
1.26	at UNC*	---	9.875	---	---	---
2.2	NC State*	---	9.850^	---	---	---
2.9	at Pitt*	---	9.800	---	---	---
2.17	at NC State*	---	9.850	---	---	---
2.23	UNC*	---	9.725	---	---	---
3.3	at TWU/Oklahoma/Penn	---	9.900	---	---	---
3.8	Air Force	---	9.925^	---	---	---
3.16	at UCLA	---	9.800	---	---	---
3.24	ACC Championship	---	9.825	---	---	---

PLAYER NOTES

- All-ACC Selection (bars)
- Tied a career-high with a 9.925 and an event win on bars on Senior Night vs Air Force
- Won first event as a Tiger vs NC State (three-way tie for bars)
- Set a season high on bars at the TWU Quad meet (9.900)
- Transfer from Kentucky
- Dual citizen of the United States and Philippines
- Two-time WGA Scholastic All-American



MAGGIE HOLMAN

Freshman • Raleigh, N.C.

CAREER HIGHS

Vault	Bars	Beam	Floor	All-Around
9.850	---	9.100	9.900	---

SEASON HIGHS

Vault	Bars	Beam	Floor	All-Around
9.850	---	9.100	9.900	---

DATE	MEET	VAULT	BAR	BEAM	FLOOR	AA
1.12	William & Mary	---	---	---	9.825	---
1.21	Pitt*	---	---	---	---	---
1.26	at UNC*	---	---	9.100	9.825	---
2.2	NC State*	9.850	---	---	9.900	---
2.9	at Pitt*	9.750	---	---	9.750	---
2.17	at NC State*	9.250	---	---	9.675	---
2.23	UNC*	---	---	---	---	---
3.3	at TWU/Oklahoma/Penn	9.775	---	---	9.650	---
3.8	Air Force	9.850	---	---	---	---
3.16	at UCLA	9.850	---	---	---	---
3.24	ACC Championship	9.825	---	---	---	---

PLAYER NOTES

- Tied a season-high with a 9.850 on vault at UCLA
- Tied a season high with a 9.850 on vault vs Air Force
- Stepped into the lineup for the Tigers due to holes left by injury and sickness vs. NC State and came in second on vault by 0.025
- Named ACC Newcomer of the Week on Feb. 5
- Led off the floor exercise for Clemson vs NC State and earned a season-high 9.900

2024 CLEMSON GYMNASTICS



EVE JACKSON

R-Junior • Los Angeles, Calif.

CAREER HIGHS

Vault	Bars	Beam	Floor	All-Around
9.900	9.900	9.775	9.925	39.200

SEASON HIGHS

Vault	Bars	Beam	Floor	All-Around
9.900	9.900	9.775	9.925	39.200

DATE	MEET	VAULT	BAR	BEAM	FLOOR	AA
1.12	William & Mary	9.750	9.825	9.775	---	---
1.21	Pitt*	9.800	9.825^	9.675	---	---
1.26	at UNC*	9.725	9.775	9.725	8.500	37.725
2.2	NC State*	9.700	9.850^	9.700	9.850	39.100
2.9	at Pitt*	---	9.800	---	---	---
2.17	at NC State*	9.825	9.875	---	9.875	---
2.23	UNC*	9.800	9.900	9.200	9.900	38.800
3.3	at TWU/Oklahoma/Penn	9.825	9.800	9.675	9.900	39.200
3.8	Air Force	9.775	9.900	9.675	9.850	39.200
3.16	at UCLA	9.900	9.800	8.975	9.925	38.600
3.24	ACC Championship	9.325	9.850	---	9.875	---

^event winner

PLAYER NOTES

- Transfer from Utah State
- Recorded a career-high on vault and floor at UCLA (9.900; 9.925)
- Tied then-season/career highs on vault and floor at the TWU Quad, while setting a career-high all-around score (39.200)
- Tied a career-high with a 9.900 on bars vs UNC (2.23); set a career-high (9.900) on floor vs UNC (2.23)
- Won bars event vs Pitt (9.825); won bars event vs NC State (9.850; three-way tie)
- Tied a career-high with a 9.825 on vault at NC State
- Mountain Rim Gymnastics Conference Bars Specialist of the Week (1/17/22)
- 2021 Academic All-Mountain Rim Gymnastics Conference
- Father, Byron, played in the NFL, CFL and World League
- Niece of DeSean Jackson



QUINN KUHL

Freshman • Holly Springs, N.C.

CAREER HIGHS

Vault	Bars	Beam	Floor	All-Around
---	---	9.800	---	---

SEASON HIGHS

Vault	Bars	Beam	Floor	All-Around
---	---	9.800	---	---

DATE	MEET	VAULT	BAR	BEAM	FLOOR	AA
1.12	William & Mary	---	---	9.700	---	---
1.21	Pitt*	---	---	9.475	---	---
1.26	at UNC*	---	---	9.800	---	---
2.2	NC State*	---	---	8.875	---	---
2.9	at Pitt*	---	---	9.750	---	---
2.17	at NC State*	---	---	9.075	---	---
2.23	UNC*	---	---	---	---	---
3.3	at TWU/Oklahoma/Penn	---	---	---	---	---
3.8	Air Force	---	---	---	---	---
3.16	at UCLA	---	---	---	---	---
3.24	ACC Championship	---	---	9.800	---	---

PLAYER NOTES



LILY KURRACK

Freshman • Tampa, Fla.

CAREER HIGHS

Vault	Bars	Beam	Floor	All-Around
---	---	---	---	---

SEASON HIGHS

Vault	Bars	Beam	Floor	All-Around
---	---	---	---	---

DATE	MEET	VAULT	BAR	BEAM	FLOOR	AA
1.12	William & Mary	---	---	---	---	---
1.21	Pitt*	---	---	---	---	---
1.26	at UNC*	---	---	---	---	---
2.2	NC State*	---	---	---	---	---
2.9	at Pitt*	---	---	---	---	---
2.17	at NC State*	---	---	---	---	---
2.23	UNC*	---	---	---	---	---
3.3	at TWU/Oklahoma/Penn	---	---	---	---	---
3.8	Air Force	---	---	---	---	---
3.16	at UCLA	---	---	---	---	---
3.24	ACC Championship	---	---	---	---	---

PLAYER NOTES



GRACE LACROSSE

Freshman • Lake Zurich, Ill.

CAREER HIGHS

Vault	Bars	Beam	Floor	All-Around
---	---	---	---	---

SEASON HIGHS

Vault	Bars	Beam	Floor	All-Around
---	---	---	---	---

DATE	MEET	VAULT	BAR	BEAM	FLOOR	AA
1.12	William & Mary	---	---	---	---	---
1.21	Pitt*	---	---	---	---	---
1.26	at UNC*	---	---	---	---	---
2.2	NC State*	---	---	---	---	---
2.9	at Pitt*	---	---	---	---	---
2.17	at NC State*	---	---	---	---	---
2.23	UNC*	---	---	---	---	---
3.3	at TWU/Oklahoma/Penn	---	---	---	---	---
3.8	Air Force	---	---	---	---	---
3.16	at UCLA	---	---	---	---	---
3.24	ACC Championship	---	---	---	---	---

PLAYER NOTES

2024 CLEMSON GYMNASTICS



LILLY LIPPEATT

R-Freshman • Mason, Ohio

CAREER HIGHS

Vault	Bars	Beam	Floor	All-Around
---	9.900	9.900	9.925	---

SEASON HIGHS

Vault	Bars	Beam	Floor	All-Around
---	9.900	9.900	9.925	---

DATE	MEET	VAULT	BAR	BEAM	FLOOR	AA
1.12	William & Mary	---	9.900^	9.750	9.825	---
1.21	Pitt*	---	9.800	9.850	9.875	---
1.26	at UNC*	---	9.825	---	---	---
2.2	NC State*	---	9.825	9.775	---	---
2.9	at Pitt*	---	9.125	9.825	---	---
2.17	at NC State*	---	9.900	9.900	---	---
2.23	UNC*	---	9.825	9.850	---	---
3.3	at TWU/Oklahoma/Penn	---	9.825	9.725	---	---
3.8	Air Force	---	9.850	9.850	9.925	---
3.16	at UCLA	---	9.875	9.875	9.900	---
3.24	ACC Championship	---	9.900	9.875	9.875	---

^event winner

PLAYER NOTES

- ACC Newcomer of the Year
- All-ACC Selection (bars)
- ACC All-Championship Team (bars, beam)
- Recorded the first 9.900 in school history vs William & Mary (bars)
- Tied a season-high with a 9.900 on bars at NC State and set a season-high with a 9.900 on beam.
- ACC Newcomer of the Week (Jan. 15; Jan. 22; Mar. 18)
- Set a career-high on floor with a 9.925 vs Air Force
- First high school signee in program history (enrolled in fall 2022)



KIELYN McCRIGHT

R-Sophomore • Parkland, Fla.

CAREER HIGHS

Vault	Bars	Beam	Floor	All-Around
---	---	9.925 ^{*at Utah State}	---	---

SEASON HIGHS

Vault	Bars	Beam	Floor	All-Around
---	---	9.925	---	---

DATE	MEET	VAULT	BAR	BEAM	FLOOR	AA
1.12	William & Mary	---	---	9.675	---	---
1.21	Pitt*	---	---	9.900^	---	---
1.26	at UNC*	---	---	9.900^	---	---
2.2	NC State*	---	---	8.900	---	---
2.9	at Pitt*	---	---	9.825	---	---
2.17	at NC State*	---	---	8.975	---	---
2.23	UNC*	---	---	9.900	---	---
3.3	at TWU/Oklahoma/Penn	---	---	9.500	---	---
3.8	Air Force	---	---	9.850	---	---
3.16	at UCLA	---	---	9.925	---	---
3.24	ACC Championship	---	---	9.875	---	---

^event winner

PLAYER NOTES

- All-ACC Selection (beam)
- ACC All-Championship Team (beam)
- NCAA Individual Competitor Selection on beam
- Tied a career-high with a 9.925 on beam at UCLA
- Earned her first event win as a Tiger vs Pitt with a 9.900 on beam
- Earned second-consecutive beam win vs UNC (9.900)
- Transfer from Utah State
- 2022 WCGA Scholastic All-American



MADISON MINNER

R-Sophomore • Anderson, S.C.

CAREER HIGHS

Vault	Bars	Beam	Floor	All-Around
9.900	---	---	9.900	---

SEASON HIGHS

Vault	Bars	Beam	Floor	All-Around
9.900	---	---	9.900	---

DATE	MEET	VAULT	BAR	BEAM	FLOOR	AA
1.12	William & Mary	9.600	---	---	---	---
1.21	Pitt*	9.800	---	---	---	---
1.26	at UNC*	9.775	---	---	---	---
2.2	NC State*	9.750	---	---	9.875	---
2.9	at Pitt*	9.800	---	---	9.825	---
2.17	at NC State*	9.350	---	---	---	---
2.23	UNC*	---	---	---	---	---
3.3	at TWU/Oklahoma/Penn	9.900	---	---	9.800	---
3.8	Air Force	9.750	---	---	9.900	---
3.16	at UCLA	9.850	---	---	---	---
3.24	ACC Championship	9.875	---	---	---	---

PLAYER NOTES

- ACC All-Championship Team (vault)
- Walk-on from nearby Anderson, S.C.
- Set a career-high on vault, 9.900, at the TWU Quad meet
- Set a career-high on floor, 9.900, vs Air Force



LAUREN RUTHERFORD

Junior • Roswell, Ga.

CAREER HIGHS

Vault	Bars	Beam	Floor	All-Around
9.925	9.925*	---	9.950 ^{*at NC State}	---

SEASON HIGHS

Vault	Bars	Beam	Floor	All-Around
9.925	9.875	---	9.950	---

DATE	MEET	VAULT	BAR	BEAM	FLOOR	AA
1.12	William & Mary	9.825^	9.825	---	9.850	---
1.21	Pitt*	9.850	9.750	---	9.900	---
1.26	at UNC*	9.925^	9.825	---	9.850	---
2.2	NC State*	9.825	9.800	---	9.950^	---
2.9	at Pitt*	---	9.875	---	---	---
2.17	at NC State*	---	---	---	---	---
2.23	UNC*	9.925^	9.825	---	9.900	---
3.3	at TWU/Oklahoma/Penn	---	9.800	---	---	---
3.8	Air Force	---	9.825	---	---	---
3.16	at UCLA	9.825	9.150	---	9.850	---
3.24	ACC Championship	9.800	9.000	---	9.925	---

^event winner

PLAYER NOTES

- ACC All-Championship Team (floor)
- Set a season-high with 9.875 on bars at NC State
- Missed Pitt meet due to illness
- Set a career-high on vault with a 9.925 at North Carolina, tied it at home vs UNC
- Earned her first event win as a Tiger vs William & Mary with a 9.825 on vault; Clemson's first-ever event winner (vault, vs William & Mary)
- Recorded the first 9.90 of her Clemson career on floor vs Pitt
- Set a career-high on vault with a 9.925 at North Carolina
- Tied a career-high with a 9.950 (Clemson's highest floor score of the season) to win floor vs. NC State (tie with Molly Arnold)
- Transfer from NC State
- 2023 EAGL Second Team (floor); 2022 EAGL First Team (bars/floor)
- 6x EAGL All-Tournament Honoree; 2x All-EAGL Scholarstic Team (2022, 2023); 2x WCGA Academci All-American (2022, 2023)

2024 CLEMSON GYMNASTICS



TRINITY WEBB

Freshman • Smithville, Mo.

CAREER HIGHS

Vault	Bars	Beam	Floor	All-Around
---	9.900	---	---	---

SEASON HIGHS

Vault	Bars	Beam	Floor	All-Around
---	9.900	---	---	---

DATE	MEET	VAULT	BAR	BEAM	FLOOR	AA
1.12	William & Mary	---	---	---	---	---
1.21	Pitt*	---	---	---	---	---
1.26	at UNC*	---	---	---	---	---
2.2	NC State*	---	9.825	---	---	---
2.9	at Pitt*	---	9.775	---	---	---
2.17	at NC State*	---	---	---	---	---
2.23	UNC*	---	---	---	---	---
3.3	at TWU/Oklahoma/Penn	---	9.800	---	---	---
3.8	Air Force	---	9.900	---	---	---
3.16	at UCLA	---	9.825	---	---	---
3.24	ACC Championship	---	9.775	---	---	---

PLAYER NOTES

- January 2024 enrollee
- Set a season-high with a 9.900 on bars vs Air Force



REBECCA WELLS

R-Senior • Smyrna, Tenn.

CAREER HIGHS

Vault	Bars	Beam	Floor	All-Around
9.900	9.875	9.950	9.950	39.550

SEASON HIGHS

Vault	Bars	Beam	Floor	All-Around
9.900	9.875	9.950	9.950	39.550

DATE	MEET	VAULT	BAR	BEAM	FLOOR	AA
1.12	William & Mary	9.725	9.800^	9.875	9.150	38.550^
1.21	Pitt*	9.725	9.750	9.850	9.800	39.125^
1.26	at UNC*	9.725	9.850	9.875	9.775	39.225^
2.2	NC State*	---	9.775	9.850^	---	---
2.9	at Pitt*	9.850	9.775	9.925^	9.900^	39.450^
2.17	at NC State*	9.900	9.800	9.950^	9.900	39.550
2.23	UNC*	9.800	9.850	9.850	9.950^	39.450^
3.3	at TWU/Oklahoma/Penn	9.850	9.875	9.800	9.875	39.400
3.8	Air Force	9.900^	9.775	9.950^	9.875	39.500^
3.16	at UCLA	9.875	9.400	9.925	9.825	39.025
3.24	ACC Championship	9.850	9.875	9.700	9.900	39.325

^event winner

PLAYER NOTES

- All-ACC Selection (all-around, vault, beam)
- ACC All-Championship Team (all-around, floor, vault)
- NCAA Individual Selection (All-Around)
- 2024 AAI Award Nominee
- Clemson's first-ever all-around winner (vs William & Mary) and currently the only all-around winner in program history (6)
- Tied her season/career-high with a 9.900 on vault and 9.950 on beam vs Air Force
- Tied a career-high with a 9.875 on bars at the TWU Quad meet (3.3)
- Set a career-high with a 9.950 on floor vs North Carolina (event win)
- Set a career-high with a 9.950 on beam at NC State, tied a career-high with a 9.900 on vault during the same meet and tied a season-high with a 9.900 on floor.
- Set a career-high with a 39.550 all-around score at NC State (2.17)
- Tied a career-high on floor and beam at Pitt (2.9); won both events
- Utah State record-holder for best all-around score at an NCAA Championship meet (39.350)
- 2022 Mountain Rim Gymnastics Conference All-Around Champion
- First-Team All-Mountain Rim Gymnastics Conference: All-Around (2022), Vault (2022)
- Second-Team All-MRGC: Beam (2022)
- MRGC Vault Specialist of the Week (3/8/21; 1/31/22; 2/21/22)