



# 2023-2024 GAME NOTES

## CLEMSON WOMEN'S BASKETBALL

1 ELITE EIGHT APPEARANCE • 4 SWEET SIXTEEN APPEARANCES • 2 ACC TOURNAMENT CHAMPIONSHIPS • 42 ALL-AMERICA HONORS

### GAME 28

## Clemson Tigers (11-16) vs. Miami Hurricanes (16-10)

February 25, 2024 • Littlejohn Coliseum (9,000) • Clemson, S.C.

### 2023-24 SCHEDULE & RESULTS

#### OVERALL 11-16

ACC	4-11
NON-CONFERENCE	7-5
HOME	9-6
AWAY	1-8
NEUTRAL	1-2

#### REGULAR SEASON

DATE	DAY	TV	(RK.) OPPONENT	RESULT/TIME (ET)
11/6	Mon.	ACCNX	Winthrop	W 71-41
11/10	Fri.	ACCNX	Charleston Southern	W 85-55
11/12	Sun.	ACCNX	Mercer	W 90-66
11/16	Thu.	SECN	at #1 South Carolina	L 40-109
11/19	Sun.	ACCNX	Longwood	W 102-63
11/24	Fri.	ESPN+	vs. # 25 Mississippi St.	L 78-81
11/25	Sat.	ESPN+	vs. Tulsa	L 64-74
11/26	Sun.	ESPN+	vs. Arkansas Pine-Bluff	W 92-66
11/30	Thu.	ESPN-Net	at Auburn#	L 53-83
12/7	Thu.	ACCN	Duke*	W 80-64
12/16	Sat.	ACCNX	Georgia State	L 72-78
12/19	Tue.	ACCNX	Air Force	W 70-54
12/22	Fri.	ACCNX	East Tennessee State	W 73-50
12/31	Sun.	CW	at #24 North Carolina*	L 76-82
1/7	Sun.	ACCN	#22 Florida State*	L 72-78
1/11	Thu.	ACCNX	at Georgia Tech*	L 62-70
1/14	Sun.	ACCNX	at Syracuse*	L 82-83
1/18	Thu.	ACCNX	#13 Louisville*	L 64-81
1/21	Sun.	CW	at #14 Virginia Tech*	L 62-74
1/25	Thu.	ACCNX	#7 NC State*	L 49-71
1/28	Sun.	ACCN	Wake Forest*	W 73-59
2/1	Thu.	ACCNX	Boston College*	W 65-55
2/4	Sun.	ACCN	at Virginia*	W 75-69
2/8	Thu.	ACCNX	at Miami*	L (OT) 72-75
2/15	Thu.	ACCNX	Georgia Tech*	L 63-64
2/18	Sun.	ACCN	Pittsburgh*	L 57-72
2/22	Thu.	ACCNX	at #19 Notre Dame*	L 47-74
2/25	Sun.	ACCNX	Miami*	2 PM
2/29	Thu.	ACCN	at Wake Forest*	6 PM
3/3	Sun.	ACCN	at Florida State*	4 PM

#### ACC TOURNAMENT

DATE	DAY	TV	(RK.) OPPONENT	RESULT/TIME (ET)
------	-----	----	----------------	------------------

\* - ACC game; **Bold** - Home game; # - SEC/ACC Challenge;

### BROADCAST INFORMATION

#### TV/STREAMING

Network	ACCNX
Play-by-Play	Fred Cunningham
Analyst	Jim Davis

#### RADIO

Station	Clemson Athletic Network (105.5 FM locally)
Play-by-Play	William Qualkinbush
Analyst	Tori Niemann

**MEDIA RELATIONS CONTACT:** Austin Christensen, Associate Director - Athletics Comm, achri22@clemson.edu, (801)-792-0270

### THE MATCHUP

#### CLEMSON

Head Coach: Amanda Butler (6th Season)  
 Career Record: 310-262 (18th Season)  
 Record at Clemson: 80-103  
 vs. Miami: 2-10

#### MIAMI

Head Coach: Katie Meier  
 Career Record: 435-279  
 Record at Miami: 359-234  
 vs. Clemson: 19-6

#### MATCHUP NOTES

- Series History: Clemson has an 8-20 all-time record against Miami
- Last Meeting: The Tigers lost 72-75 in overtime in Coral Gables earlier this month
- Amanda Butler-led teams have a 3-10 overall record against the Hurricanes

### PROBABLE STARTERS

POS.	#	NAME	HT.	YR.	HOMETOWN	PPG	RPG	OTHER
G	1	Dayshyanette Harris	5-7	Gr.	Youngstown, Ohio	13.6	3.6	5.0 apg
G	30	Madi Ott	5-10	Jr.	Frisco, Texas	2.7	1.7	.290 3fg%
G	22	Ruby Whitehorn	6-0	So.	Detroit, Mich.	11.9	5.3	.457 fg%
F	5	Amari Robinson	6-0	Gr.	Douglasville, Ga.	17.3	6.7	.544 fg%
C	21	Eno Inyang	6-2	Jr.	St. Cloud, Fla.	3.1	2.1	.341 fg%

### OPENING TIP

#### A BUNCH OF BUCKETS

- This year's ultra-experienced Clemson squad has scored a total of 8,664 career points in division one - the highest amount of career points on any active roster in the ACC, and it's the eighth most career points in the entire country
- Clemson scored 102 points in its win against Longwood. It was the first time the Tigers have scored 100+ points since 2009. It was Clemson's largest Margin of victory since a 43-point win against Radford on Dec. 20, 2022
- The Tigers set a record for highest-scoring quarter in program history with a 33-point first quarter against Longwood. The Tigers also tied a program record for most three pointers in a single game (14)
- Clemson has scored 90+ points on three different occasions this season. Prior to this season they had only reached the 90-point plateau two times since 2018

#### ELITE AMARI

- Amari Robinson is having a career year and has become one of the most efficient scorers in the nation, leading the ACC in true shooting (.632) and effective field goal percentage (.584)
- Robinson is one of just three players in the ACC to be ranked in the top ten in the conference in field goal percentage (.544, third), points (466, sixth), field goals (168, sixth), points per game (17.3, seventh), offensive rebounds (79, ninth), and rebounds per game (6.7, tenth)
- Amari's 37 points against Syracuse set a new career high and she now has 1,815 career points which surpassed Janet Knight for third-most in Tiger history.
- Robinson's 923 career rebounds rank as the fourth-most in program history. She needs 10 more to surpass Lele Hardy for third-most in Tiger history

#### TOUGH SCHEDULE TIGERS

- Clemson's first eight ACC games were against teams who were at or above .500 in ACC play at the time of the game.
- The Tigers' first eight games in conference play featured six teams who have been ranked in the AP Top 25 at some point during this season
- CU has 13 games on its schedule against teams who are currently in the top 50 in the NET rankings
- The Tigers schedule features two games against teams who are currently in the top ten in NET, and six games against opponents in the NET top 25

#### 1,000-POINT TIGERS

- Per Stats Perform, Clemson is one of just three teams in division one with four 1,000-point scorers on the active roster
- Clemson's 1,000-point scorers are Robinson (1,829), Harris (1,452), Mackenzie Kramer (1,307), and Nya Valentine (1,068)

# QUICK FACTS

## TEAM FACTS

### 2022-23 RESULTS

Overall Record: 19-16  
 ACC Record/Finish: 7-11 / 10th  
 WNIT Third Round  
 Home Record: 13-6  
 Away Record: 4-7  
 Neutral Record: 2-3

### ROSTER INFORMATION

Letterwinners Returning/Lost: 5/7  
 Starters Returning/Lost: 2/3  
 Newcomers: 9

## GENERAL INFORMATION

### THE BASICS

School: Clemson University  
 Location: Clemson, S.C.  
 Founded: 1889  
 Enrollment: 22,566  
 President: Dr. James Clements  
 Athletic Director: Graham Neff  
 Faculty Representative: Dr. Antonis Katsiyanis  
 W. Basketball Administrator: Stephanie Ellison-Johnson  
 Nickname: Tigers  
 Colors: Clemson Orange and Regalia  
 Conference: Atlantic Coast Conference

### COURT FACTS

Arena: Littlejohn Coliseum  
 Capacity: 9,000  
 Attendance Record: 9,000 | Jan. 9, 1980 vs. Duke

## MEDIA INFORMATION

Assoc. Director of Comm.: Austin Christensen  
 Office Phone: 864-656-1924  
 Cell Phone: 801-792-0270  
 Email: achri22@clemson.edu

Athletic Comm. Assistant: Maurice Williams  
 Contact Info: 803-842-1279  
 Email: mauric2@clemson.edu  
 Address: Jervy Athletic Center, PO Box 31  
 Clemson, S.C. 29633

### HOME CREDENTIALS

The press seating area at Littlejohn Coliseum as well as media parking will operate at a normal capacity in 2023-24. For women's basketball credentials, please email **Austin Christensen** (achri22@clemson.edu) and **Maurice Williams** (mauric2@clemson.edu). Credentialing will be on a single-game basis and must be submitted at least 24 hours prior to the game.

Season credentials will not be issued in 2023-24. All media members are required to apply for credentials on a game-by-game basis.

## 2023-24 ROSTER INFORMATION



### NUMERICAL

#	NAME	YR.	POS.	HT.	HOMETOWN (HS/PREVIOUS)
0	Mackenzie Kramer	Sr.	G	5-9	St. Michael, MN (Lehigh)
1	Dayshyanette Harris	Gr.	G	5-7	Youngstown, OH (Pittsburgh)
2	Nya Valentine	Jr.	G	5-3	Mobile, AL (Shelton State CC)
3	MaKayla Elmore	Jr.	F	6-3	Fostoria, OH (Hopewell Loudon)
5	Amari Robinson	Gr.	F	6-0	Douglasville, GA (Douglas County HS)
10	Kylee Kellermann	Fr.	G	5-6	Charleston, SC (Phillip Simmons HS)
11	Maddi Cluse	Jr.	G	5-10	Sagamore Hills, OH (Miami (OH))
13	Bella Ranallo	Fr.	G	5-6	Lake Forest, IL (Lake Forest HS)
21	Eno Inyang	Jr.	C	6-2	St. Cloud, FL (St. Cloud HS)
22	Ruby Whitehorn	So.	G	5-11	Detroit, MI (Detroit Edison HS)
30	Madi Ott	Jr.	G	5-10	Frisco, TX (Frisco Centennial HS)
33	Danielle Rauch	Gr.	G	5-8	Syracuse, NY (Michigan)
34	Amani Freeman	Gr.	F	6-2	Avon, IN (Miami (OH))

### ALPHABETICAL

#	NAME	YR.	POS.	HT.	HOMETOWN (HS/PREVIOUS)
11	Maddi Cluse	Jr.	G	5-10	Sagamore Hills, OH (Miami (OH))
3	MaKayla Elmore	Jr.	F	6-3	Fostoria, OH (Hopewell Loudon)
34	Amani Freeman	Gr.	F	6-0	Avon, IN (Miami (OH))
1	Dayshyanette Harris	Gr.	G	5-7	Youngstown, OH (Pittsburgh)
21	Eno Inyang	Jr.	C	6-2	St. Cloud, FL (St. Cloud HS)
10	Kylee Kellermann	Fr.	G	5-6	Charleston, SC (Phillip Simmons HS)
0	Mackenzie Kramer	Sr.	G	5-9	St. Michael, MN (Lehigh)
30	Madi Ott	Jr.	G	5-10	Frisco, TX (Frisco Centennial HS)
13	Bella Ranallo	Fr.	G	5-6	Lake Forest, IL (Lake Forest HS)
33	Danielle Rauch	Gr.	G	5-8	Syracuse, NY (Michigan)
5	Amari Robinson	Gr.	F	6-0	Douglasville, GA (Douglas County HS)
2	Nya Valentine	Jr.	G	5-3	Mobile, AL (Shelton State CC)
22	Ruby Whitehorn	So.	G	5-11	Detroit, MI (Detroit Edison HS)

### STAFF

**Head Coach:** Amanda Butler (Florida, '95)  
**Assistant Coach:** Joy (Cheek) Smith (Duke, '10)  
**Assistant Coach:** Daniel Barber (Florida, '12)  
**Assistant Coach:** Darrick Gibbs (Wofford, '00)  
**Director of Opts:** Shellie Greenman (Virginia Tech, '90)  
**Athletic Trainer:** Candace Wright  
**Strength and Conditioning Coach:** Jena Ready

### PRONUNCIATION GUIDE

Nya Valentine - NY-uh  
 Bella Ranallo - ruh-NAH-lo  
 Eno Inyang - EH-noh IN-yang  
 Danielle Rauch - ROWSH

# TEAM NOTES



0

## MACKENZIE KRAMER

Sr. • G • 5-9 • St. Michael, Minn. (Lehigh)

	GP/GS	PPG	RPG	APG	FG%	3FG%	FT%
20-21	16/2	8.7	2.9	1.4	.362	.342	.947
21-22	30/30	15.9	2.9	2.2	.449	.403	.760
22-23	29/28	17.2	3.3	3.2	.442	.427	.781
23-24	23/10	8.3	1.5	1.0	.403	.364	.923
Career	98/70	13.3	2.7	2.1	.429	.394	.815

- Was the Patriot League's second highest scorer (17.2 ppg) in 2022-23 and was named to the First Team All-Patriot League
- Led the Patriot League in made three pointers (76) and three point percentage (.427) in 2022-23
- Was named the Patriot League's Scholar Athlete of the Year for the second consecutive year in 2022-23. Also received CSC Academic All-American honors
- Scored her 1,000th career point on 2/15/23 against Navy
- Graduated in three years with a cumulative 4.0 GPA in Population Health



1

## DAYSHANETTE HARRIS

Gr. • G • 5-7 • Youngstown, Ohio (Pittsburgh)

	GP/GS	PPG	RPG	APG	FG%	3FG%	FT%
19-20	30/24	12.7	4.5	2.6	.348	.267	.651
20-21	15/15	12.4	4.3	4.7	.376	.105	.772
21-22	27/19	9.6	2.9	2.9	.335	.340	.756
22-23	30/16	8.7	2.9	1.7	.399	.308	.692
23/24	27/27	13.6	3.6	5.0	.462	.327	.674
Career	129/101	11.3	3.6	3.2	.380	.291	.696

- Spent four seasons at Pittsburgh where she had career averages of 10.6 ppg, 3.6 rpg, and 2.7 apg
- She was the fastest Panther in program history to reach 700 points, 250 rebounds, and 175 assists (60 games)
- Harris was a two-year captain and a three time selection to the ACC All-Academic team during her time in Pittsburgh
- Scored her 1,000th career point on 1/29/23 against Boston College
- Was named to the ACC All-Freshman Team in 2020
- Set a career high with six steals in Clemson's game against Virginia Tech



2

## NYIA VALENTINE

Jr. • G • 5-3 • Mobile, Ala. (Shelton State CC)

	GP/GS	PPG	RPG	APG	FG%	3FG%	FT%
21-22	31/29	14.1	2.8	5.7	.419	.417	.828
22-23	35/35	16.0	2.8	5.9	.411	.391	.774
23/24	27/0	2.6	0.6	0.7	.320	.333	.667
Career	93/64	15.1	2.8	5.8	.414	.402	.802

- Was a two-time NJCAA All-American at Shelton State Community College
- In 66 games at Shelton State, Valentine averaged 15.1 ppg, 5.8 apg, 2.78 rpg, and shot .402 from outside
- Scored in double figures 30 times in the 2022-23 season, including 12 games with over 20 points
- Was named the 2022-23 Alabama Community College Conference Player of the Year



3

## MAKAYLA ELMORE

Jr. • F • 6-3 • Fostoria, Ohio (Hopewell Loudon)

	GP/GS	PPG	RPG	APG	FG%	3FG%	FT%
21-22	27/0	0.8	1.1	0.1	.189	.167	.800
22-23	35/0	2.5	2.9	0.5	.384	.298	.538
23-24	27/25	4.0	5.9	1.3	.342	.288	.571
Career	89/25	2.4	3.2	0.6	.333	.269	.594

- Scored a career high of 9 points on 11/12/23 against Mercer
- Corralled 11 rebounds against Arkansas - Pine Bluff on November 26 to set a new career high
- Scored over 2,000 points in her high school career
- Ranked the #18 forward by ESPN
- Three-time First Team All-Ohio and Three-time 1st team District 6
- All-Ohio Player of the Year as a Junior
- Graduated in the fall semester with a 3.7 GPA in Sports Communications



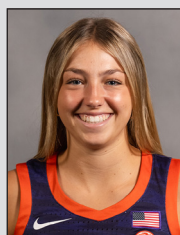
5

## AMARI ROBINSON

Gr. • F • 6-0 • Douglasville, Ga. (Douglas County)

	GP/GS	PPG	RPG	APG	FG%	3FG%	FT%
19-20	30/29	10.7	6.0	1.4	.457	.271	.760
20-21	26/26	8.8	6.1	0.8	.447	.324	.704
21-22	30/30	11.0	6.1	0.9	.418	.143	.806
22-23	35/35	13.9	6.4	1.6	.492	.356	.813
23/24	27/27	17.3	6.7	1.4	.544	.397	.833
Career	148/147	12.4	6.2	1.3	.476	.312	.789

- Was named to the 2022-23 Second Team All-ACC and 2022-23 Second Team All-ACC Tournament Team
- Received CSC Academic All-District honors and was named to the ACC All-Academic team last season
- Led the Tigers and ranked in the top ten in the ACC in scoring (13.9 ppg), and was in the top 15 in the conference for rebounding (6.4 rpg) last season
- Moved to third place all time in career points scored in Clemson history with her 20-point effort against Georgia Tech.
- Set a new career high with 37 points in Clemson's game against Syracuse earlier this season



10

## KYLEE KELLERMANN

Fr. • G • 5-6 • Charleston, S.C. (Phillip Simmons HS)

	GP/GS	PPG	RPG	APG	FG%	3FG%	FT%
23-24	7/0	-	0.3	-	.000	.000	-
Career	7/0	-	0.3	-	.000	.000	-

- Is the only member of this year's team that is from South Carolina
- Was the fastest player in Phillip Simmons High School history to reach 1,000 career points
- Averaged 17.2 ppg and 4.3 rpg in her final high school season
- Was a South Carolina all-state selection in basketball and soccer in her prep career
- Finished her high school career with 1,215 career points
- Graduated fourth in her class and was a member of National Honors Society



11

## MADDI CLUSE

Jr. • G • 5-10 • Sagamore Hills, Ohio (Miami (OH))

	GP/GS	PPG	RPG	APG	FG%	3FG%	FT%
21-22	26/16	6.5	4.4	1.3	.412	.318	.636
22-23	31/31	14.9	8.1	3.1	.423	.322	.721
23/24	13/13	7.5	4.2	1.1	.435	.333	.472
Career	70/60	10.4	6.0	2.1	.422	.322	.663

- Spent the last two seasons at Miami (OH)
- Ranked in the top 15 in the MAC in scoring (14.9 ppg), shooting (.423 fg%), rebounding (8.1 rpg), and assists (3.1 apg) in 2022-23
- Tallied 11 double-doubles last season
- Scored a career high of 30 points against Vermont
- Recorded the second triple-double in Miami (OH) history with 18 points, 11 rebounds, and 10 assists in a win over Bradley

# ROSTER NOTES



**13**

## BELLA RANALLO

Fr. • G • 5-6 • Lake Forest, Ill. (Lake Forest HS)

	GP/GS	PPG	RPG	APG	FG%	3FG%	FT%
23-24	7/0	0.4	0.1	0.3	.250	.333	-
Career	7/0	0.4	0.1	0.3	.250	.333	-

- Played basketball, softball, and volleyball at Lake Forest High School
- Averaged 12.3 ppg, 3.9 rpg, 2.6 apg, 2.3 spg in her senior season in high school
- Surpassed the 1,000-point mark in her senior season



**21**

## ENO INYANG

Jr. • C • 6-2 • St. Cloud, Fla. (St. Cloud HS)

	GP/GS	PPG	RPG	APG	FG%	3FG%	FT%
21-22	27/0	4.4	3.8	0.1	.458	-	.712
22-23	31/0	6.4	3.7	0.2	.556	-	.758
23-24	24/2	3.1	2.1	0.3	.341	-	.789
Career	82/2	4.8	3.2	0.2	.467	-	.743

- Recorded a career-high 20 points against Mt. St. Mary's on 11/28/21
- Led the Tigers by shooting 55.6% from the field in 2022-23.
- Saw action in 31 games last season and provided a spark off the bench by averaging 6.4 ppg and 3.7 rpg
- Scored in double figures on seven different occasions last season
- Tallied double-doubles against Florida State (10 points, 11 rebounds) and High Point (12 points, 10 rebounds) in 2022-23



**22**

## RUBY WHITEHORN

So. • G • 5-11 • Detroit, Mich. (Detroit Edison HS)

	GP/GS	PPG	RPG	APG	FG%	3FG%	FT%
22-23	35/33	9.5	4.8	1.8	.420	.250	.643
23-24	27/25	11.9	5.3	1.6	.457	.278	.694
Career	62/58	10.5	5.0	1.7	.437	.268	.667

- Highest-rated recruit in Clemson history at the time of her signing (#15 in the country, #2 guard, #1 in the state of Michigan [ESPN]).
- She was Clemson's first-ever McDonald's All-American signee
- Was named to the ACC All-Freshman team after averaging 9.5 ppg and 4.8 rpg in her true-freshman season
- Appeared in all 35 games in 2022-23, and started in 33 of them
- Notched two 20+-point games last season, including a 29-point outburst against Northern Arizona



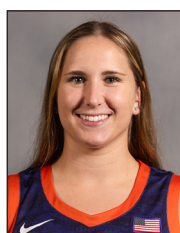
**30**

## MADI OTT

Jr. • G • 5-10 • Frisco, Texas (Frisco Centennial)

	GP/GS	PPG	RPG	APG	FG%	3FG%	FT%
21-22	30/19	3.0	1.1	0.5	.312	.257	.882
22-23	34/1	2.6	0.4	0.5	.326	.291	.833
23/24	26/4	2.7	1.7	1.0	.282	.290	.600
Career	90/24	2.8	1.0	0.7	.307	.280	.821

- Saw action in 34 games in 2022-23
- Tallied season highs in points (16), field goals made (6), and rebounds (3) in Clemson's win against Wofford last season.
- Has started in 20 games through her first two seasons at Clemson



**33**

## DANIELLE RAUCH

Gr. • G • 5-8 • Syracuse, N.Y. (Michigan)

	GP/GS	PPG	RPG	APG	FG%	3FG%	FT%
18-19	22/0	0.4	0.3	0.6	.231	.167	1.000
19-20	24/3	1.5	1.0	0.8	.406	.350	.500
20-21	19/5	2.3	1.7	1.5	.302	.281	.727
21-22	32/32	5.4	4.0	2.7	.333	.284	.700
23-24	19/2	2.3	1.5	1.6	.250	.262	.800
Career	116/42	2.6	1.9	1.5	.318	.282	.712

- Played four seasons at Michigan prior to accepting a role as a graduate assistant at Clemson last season.
- Clemson's game last week against Mercer was Rauch's 100th career game played
- Won Michigan's Big Ten Outstanding Sportsmanship Award in 2021-22
- Three-time Academic All-Big Ten honoree
- Was a captain on the 2021-22 Michigan team that advanced to the elite eight
- Scored in double figures in seven different games for the Wolverines in her senior season



**34**

## AMANI FREEMAN

Gr. • F • 6-2 • Avon, Ind. (Miami (OH))

	GP/GS	PPG	RPG	APG	FG%	3FG%	FT%
19-20	17/0	1.7	1.2	0.0	.455	-	.500
20-21	21/1	2.2	1.3	0.1	.655	-	.692
21-22	12/11	4.8	3.5	0.3	.615	-	.526
22-23	31/31	8.4	5.1	0.7	.594	-	.671
23-24	25/0	3.0	1.6	0.5	.569	-	.600
Career	106/43	4.4	2.7	0.4	.589	-	.623

- Played and started all 31 games for Miami (OH) last season
- Two-time Academic All-MAC selection
- Averaged career highs in points per game (8.4) and rebounds (5.1) last year
- Scored a career high of 17 points last season against Akron
- Tallied double figures in points on 12 different occasions last season

# GAME LEADERS & STARTERS

## SCHEDULE & RESULTS

### LED TEAM IN ....

**POINTS:** ROBINSON (13), HARRIS (9), WHITEHORN (5), CLUSE (1)

**REBOUNDS:** ROBINSON (13), ELMORE (9), WHITEHORN (8), CLUSE (1), HARRIS (1)

**ASSISTS:** HARRIS (19), RAUCH (4), ELMORE (3), WHITEHORN (2), CLUSE (1), ROBINSON (1)

DATE	DAY	H/A/N	(RK.) OPPONENT	RESULT/TIME (ET)	POINTS	REBOUNDS	ASSISTS
11/6	Mon.	H	Winthrop	W 71-41	Robinson (22)	Cluse, Elmore, Harris (7)	Rauch (4)
11/10	Fri.	H	Charleston Southern	W 85-55	Robinson (21)	Robinson (9)	Harris (10)
11/12	Sun.	H	Mercer	W 90-66	Robinson (21)	Elmore, Robinson (7)	Harris (5)
11/16	Thu.	A	#1 South Carolina	L 40-109	Cluse (11)	Elmore, Robinson (6)	Rauch, Whitehorn (2)
11/19	Sun.	H	Longwood	W 102-63	Harris (20)	Elmore (7)	Robinson (8)
11/24	Fri.	N	#25 Mississippi State%	L 78-81	Robinson (21)	Whitehorn (6)	Harris (9)
11/25	Sat.	N	Tulsa%	L 64-74	Robinson (29)	Elmore (9)	Cluse (5)
11/26	Sun.	N	Arkansas - Pine Bluff%	W 92-66	Harris, Robinson (15)	Elmore (11)	Harris (6)
11/30	Thu.	A	Auburn&	L 53-83	Harris (14)	Elmore (10)	Rauch (3)
12/7	Thu.	H	Duke*	W 80-64	Robinson (22)	Robinson (7)	Harris (5)
12/16	Sat.	H	Georgia State	L 72-78	Robinson (35)	Robinson (7)	Harris (5)
12/19	Tue.	H	Air Force	W 70-54	Whitehorn (17)	Robinson (8)	Elmore (3)
12/22	Fri.	H	East Tennessee State	W 73-50	Whitehorn (18)	Robinson (8)	Rauch (6)
12/31	Sun.	A	#24 North Carolina*	L 76-82	Robinson (21)	Elmore (11)	Harris (5)
1/7	Sun.	H	#22 Florida State*	L 72-78	Harris (20)	Robinson (8)	Harris (4)
1/11	Thu.	A	Georgia Tech*	L 62-70	Robinson (19)	Robinson (10)	Harris (5)
1/14	Sun.	A	Syracuse*	L 82-83	Robinson (37)	Elmore (9)	Harris (10)
1/18	Thu.	H	#13 Louisville*	L 64-81	Harris (25)	Robinson (8)	Harris (7)
1/21	Sun.	A	#14 Virginia Tech*	L 62-74	Harris (25)	Robinson (9)	Harris (8)
1/25	Thu.	H	#7 North Carolina State*	L 49-71	Whitehorn (11)	Robinson (9)	Whitehorn (3)
1/28	Sun.	H	Wake Forest	W 73-59	Robinson (21)	Whitehorn (9)	Elmore, Harris (4)
2/1	Thu.	H	Boston College*	W 65-55	Whitehorn (19)	Whitehorn (8)	Elmore, Harris (3)
2/4	Sun.	A	Virginia*	W 75-69	Harris (23)	Whitehorn (9)	Harris (9)
2/8	Thu.	A	Miami*	L (OT) 72-75	Robinson (24)	Robinson, Whitehorn (7)	Harris (6)
2/15	Thu.	H	Georgia Tech*	L 63-64	Harris (24)	Whitehorn (9)	Harris (7)
2/18	Sun.	H	Pittsburgh*	L 57-72	Harris (18)	Whitehorn (7)	Harris (4)
2/22	Thu.	A	#19 Notre Dame*	L 47-74	Whitehorn (17)	Whitehorn (10)	Harris (9)
2/25	Sun.	H	Miami*	2 PM			
2/29	Thu.	A	Wake Forest*	6 PM			
3/3	Sun.	A	Florida State*	4 PM			

## GAME-BY-GAME STARTERS

Opponent	G	G	G	F	C
Winthrop	Harris	Rauch	Cluse	Robinson	Elmore
Charleston S.	Harris	Rauch	Cluse	Robinson	Elmore
Mercer	Harris	Cluse	Whitehorn	Robinson	Elmore
S. Carolina	Harris	Cluse	Whitehorn	Robinson	Elmore
Longwood	Harris	Cluse	Whitehorn	Robinson	Elmore
Mississippi St.%	Harris	Cluse	Whitehorn	Robinson	Elmore
Tulsa&	Harris	Cluse	Whitehorn	Robinson	Elmore
Arkansas - PB%	Harris	Cluse	Whitehorn	Robinson	Elmore
Auburn&	Harris	Cluse	Whitehorn	Robinson	Elmore
Duke*	Harris	Cluse	Whitehorn	Robinson	Elmore
Georgia St.	Harris	Cluse	Whitehorn	Robinson	Elmore
Air Force	Harris	Cluse	Whitehorn	Robinson	Elmore
ETSU	Harris	Cluse	Whitehorn	Robinson	Elmore
North Carolina*	Harris	Kramer	Whitehorn	Robinson	Elmore
Florida State*	Harris	Kramer	Whitehorn	Robinson	Elmore
Georgia Tech*	Harris	Kramer	Whitehorn	Robinson	Elmore
Syracuse*	Harris	Kramer	Whitehorn	Robinson	Elmore
Louisville*	Harris	Kramer	Whitehorn	Robinson	Elmore
Virginia Tech*	Harris	Kramer	Whitehorn	Robinson	Elmore
NC State*	Harris	Kramer	Whitehorn	Robinson	Elmore
Wake Forest*	Harris	Kramer	Whitehorn	Robinson	Elmore
Boston Coll.*	Harris	Kramer	Whitehorn	Robinson	Elmore
Virginia*	Harris	Kramer	Whitehorn	Robinson	Elmore
Miami*	Harris	Ott	Whitehorn	Robinson	Elmore
Georgia Tech*	Harris	Ott	Whitehorn	Robinson	Elmore
Pittsburgh*	Harris	Ott	Whitehorn	Robinson	Inyang
Notre Dame*	Harris	Ott	Whitehorn	Robinson	Inyang
Miami*					
Wake Forest*					
Florida State*					



## ACC STANDINGS (AS OF 2/23/24)

SCHOOL	ACC	PCT.	HOME	AWAY	OVR.	PCT.	HOME	AWAY	NEUTRAL	STREAK
Virginia Tech	13-2	.867	8-0	5-2	22-4	.846	14-0	6-3	2-1	W9
Syracuse	12-4	.750	6-2	6-2	22-5	.815	13-2	7-3	2-0	L1
NC State	11-4	.733	6-1	5-3	23-4	.852	13-1	7-3	3-0	L1
Louisville	11-4	.733	6-1	5-3	22-6	.786	13-1	7-4	2-1	W1
Florida State	11-5	.688	6-2	5-3	20-8	.714	12-3	7-3	1-2	W3
Notre Dame	10-5	.667	4-3	6-2	20-6	.769	9-3	10-2	1-1	W2
North Carolina	10-5	.667	7-1	3-4	18-9	.667	13-2	3-4	2-3	W3
Duke	9-6	.600	6-1	3-5	17-9	.654	12-3	5-6	0-0	W1
Miami	6-9	.400	4-3	2-6	16-10	.615	13-3	3-6	0-1	L3
Georgia Tech	6-10	.375	3-5	3-5	15-13	.536	9-6	5-6	1-1	L2
Virginia	5-10	.333	2-6	3-4	13-13	.500	8-8	4-4	1-1	W1
Clemson	4-11	.267	3-5	1-6	11-16	.407	9-6	1-8	1-2	L4
Boston College	3-12	.200	3-4	0-8	11-17	.393	10-5	1-10	0-2	L9
Pitt	2-13	.133	0-8	2-5	8-20	.286	5-10	2-7	1-3	L1
Wake Forest	1-14	.067	0-8	1-6	5-22	.185	3-12	1-9	1-1	W1

# ROSTER & W-L RECORD

## ROSTER BREAKDOWN

### BY CLASS

#### GRAD: 4

Amani Freeman  
Dayshyanette Harris  
Danielle Rauch  
Amari Robinson

#### SENIORS:

Mackenzie Kramer

#### JUNIORS: 5

Maddi Cluse  
MaKayla Elmore  
Eno Inyang  
Madi Ott  
Nya Valentine

#### SOPHOMORES: 1

Ruby Whitehorn

#### FRESHMEN: 2

Kylee Kellermann  
Bella Ranallo

### BY POSITION

#### CENTER: 1

Eno Inyang

#### FORWARD: 3

MaKayla Elmore  
Amani Freeman  
Amari Robinson

#### GUARD: 9

Maddi Cluse  
Dayshyanette Harris  
Kylee Kellermann  
Mackenzie Kramer  
Madi Ott  
Bella Ranallo  
Danielle Rauch  
Nya Valentine  
Ruby Whitehorn

### BY STATE

#### ALABAMA: 1

Nya Valentine

#### FLORIDA: 1

Eno Inyang

#### GEORGIA: 1

Amari Robinson

#### ILLINOIS: 1

Bella Ranallo

#### INDIANA: 1

Amani Freeman

#### MICHIGAN: 1

Ruby Whitehorn

#### MINNESOTA: 1

Mackenzie Kramer

#### NEW YORK: 1

Danielle Rauch

#### OHIO: 3

Maddi Cluse  
MaKayla Elmore  
Dayshyanette Harris

#### SOUTH CAROLINA: 1

Kylee Kellermann

#### TEXAS: 1

Madi Ott

## CLEMSON RECORD WHEN ...

### CLEMSON POINTS SCORED

Scoring 39 points or less	0-0
Scoring 40-49 points	0-2
Scoring 50-59 points	0-2
Scoring 60-69 points	1-5
Scoring 70-79 points	5-5
Scoring 80-89 points	2-1
Scoring 90 points or more	3-0

### OPPONENT POINTS SCORED

Scoring 39 points or less	0-0
Scoring 40-49 points	1-0
Scoring 50-59 points	5-0
Scoring 60-69 points	5-1
Scoring 70-79 points	0-8
Scoring 80-89 points	0-5
Scoring 90 points or more	0-1

### SHOOTING PCT.

Shooting 40% or better (FG)	11-8
Shooting less than 40% (FG)	0-7
Shooting 35% or better (3FG)	8-4
Shooting less than 35% (3FG)	3-11
Shooting 70% or better (FT)	5-8
Shooting less than 70% (FT)	6-7

### OPPONENT SHOOTING PCT.

Shooting 40% or better (FG)	6-15
Shooting less than 40% (FG)	5-0
Shooting 35% or better (3FG)	6-7
Shooting less than 35% (3FG)	5-8
Shooting 70% or better (FT)	5-6
Shooting less than 70% (FT)	6-8

### TURNOVERS

Commit more turnovers	5-12
Opponent commits more turnovers	6-3
Tied	0-0

### 3-POINT FIELD GOAL ATTEMPTS

Attempt more 3-point field goals	7-8
Opponent attempts more 3-point field goals	4-7
Tied	0-0

### POINTS IN THE PAINT

Scoring More	8-6
Opponent Scores more	3-9
Tied	0-0

### FREE THROW ATTEMPTS

Attempt more free throws	11-6
Opponent attempt more free throws	0-9
Tied	0-0

### POINTS OFF TURNOVERS

More points off turnovers	10-2
Opponent more points off turnovers	1-12
Tied	0-1

### REBOUNDS

Out-rebound opponent	11-4
Opponent has more rebounds	0-10
Tied	0-1

### SECOND CHANCE POINTS

More second chance points	9-4
Opponent more second chance points	2-10
Tied	0-1

### STEALS/ASSISTS

At least 10 steals	7-3
At least 10 assists	11-12

### FAST BREAK POINTS

More fast break points	8-5
Opponent more fast break points	2-8
Tied	2-2

### FIELD GOAL ATTEMPTS

Attempt more field goals	4-3
Opponent attempts more field goals	7-12
Tied	0-0



## TOP-SCORING QUARTERS

### THIS SEASON

1ST	2ND	3RD	4TH	OPPONENT/SCORE	DATE
-	-	28	-	Mercer (90-66)	11/12/23
33	-	-	-	Longwood (102-63)	11/19/23
-	-	-	27	North Carolina (76-82)	12/31/23
-	29	-	-	Wake Forest (73-59)	1/28/24

### ALL-TIME\*

1ST	2ND	3RD	4TH	OPPONENT/SCORE	DATE
33	-	-	-	Longwood (102-63)	11/19/23
--	31	--	--	Columbia (78-82)	11/14/21
--	--	--	30	Jacksonville St. (69-63)	12/21/16
--	--	--	30	Miami (76-67)	1/10/19
29	--	--	--	Boston College (91-58)	2/16/19
29	--	--	--	Syracuse (86-77)	1/24/21
29	--	--	--	Syracuse (82-83)	1/14/24
--	29	--	--	Wake Forest (73-59)	1/28/24
--	--	28	--	Mercer (90-66)	11/12/23
--	--	28	--	Boston College (68-70)	2/9/20
--	28	--	--	Wright State (75-51)	11/25/16
28	--	--	--	Rhode Island (80-67)	12/8/18
28	--	--	--	William & Mary (41-58)	12/5/15
--	27	--	--	NC A&T (74-82)	12/20/19
--	27	--	--	Furman (77-71)	11/6/19
--	--	--	27	FSU (88-95)	1/21/20

# NOTES & RANKINGS

## THE OPPONENT

### NOTING THE HURRICANES



### 2023-24 STAT LEADERS

SCORING	G	PTS.	PPG
Shayean Day-Wilson	26	312	12.0
Jasmyne Roberts	26	278	10.7

REBOUNDING	G	REBS	RPG
Lazaria Spearman	26	147	5.9
Jasmyne Roberts	26	127	4.9

ASSISTS	G	ASTS.	APG
Shayean Day-Wilson	26	93	3.5
Ja'Leah Williams	25	70	2.8

STEALS	G	STLS.	SPG
Jasmyne Roberts	26	42	1.6
Lashae Dwyer	26	39	1.5

BLOCKS	G	BLKS.	BPG
Latasha Lattimore	22	30	1.3
Kyla Oldacre	26	25	0.9

## NCAA & ACC RANKINGS

AS OF JAN. 24

### INDIVIDUAL RANKINGS

NAME	CATEGORY	STAT	ACC	NCAA
Amari Robinson	Field Goal %	.555	2	36
Amari Robinson	Field Goals	132	6	50
Amari Robinson	Points	370	6	37
Amari Robinson	Points Per Game	17.6	6	64
Amari Robinson	Free Throws	88	4	31
Day Harris	Assists	98	6	50

**SCAN TO READ ABOUT AMARI ROBINSON'S HISTORIC GAME AGAINST SYRACUSE**



## TEAM NOTES

### ALL-CONFERENCE AMARI

- Amari Robinson became the ninth Tiger in program history to reach the 1,500-career point mark earlier this season.
- With her first rebound in the Tigers' game against Duke, Robinson became just the fourth Tiger in CU history to join the elite 1,500-point/800-rebound club
- All-Conference Amari is having the best year of her storied career. She leads the Tigers in scoring at 17.3 points per game and rebounding (6.7 rpg), is shooting 54% from the floor and 40% from beyond the arc.
- Robinson has set three new career highs in points this season. The first, against Arkansas - Pine Bluff, was 29 points. She then set another scoring career high with 35 points in Clemson's game against Georgia State. In Clemson's game against Syracuse, Robinson had one of the best games of her career with a 37-point outburst.

### ALL DAY

- Harris is currently the ACC leader and ranks fourth in the nation in assist rate at 45%
- In Clemson's eight games prior to this week, Harris led the Tigers in points per game (18.5), assists per game (5.6), and steals per game (2.1). Over that same stretch, she has tallied at least 20 points on five occasions (25 vs Louisville, 25 vs Virginia Tech, 23 vs Virginia, 22 vs Miami, and 24 against Georgia Tech)
- In Clemson's win against Virginia, Harris nearly recorded a triple-double as she led the Tigers with 23 points, nine assists, eight rebounds, made a career high of 11 free throws, and drew 15 fouls.
- Harris is scoring a career-best 13.5 points per game, and is one of the best distributors in the ACC with 4.9 assists per game - sixth best in the conference.
- Harris is currently shooting a career high of 46.2% from the field
- Harris has set and tied her season high in scoring (25) in Clemson's games against No. 13 Louisville and No. 14 Virginia Tech. She also dished out a combined 15 assists in those two games
- In the Tigers' contest against Virginia Tech, Harris set a new career high with six steals. Her previous career high was four steals which she did on two different occasions.
- With 136 assists this season, Harris, a four-year impact player at Pitt, has demolished her previous record for most assists in a single season (79).

### AMANDA BUTLER'S 300 WINS

- Coach Butler notched the 300th win of her coaching career in the Tigers' 71-41 win over Winthrop in the season opener.
- With the victory against Winthrop, Butler, who is just entering her sixth season in charge of the Tigers, also recorded her 70th win at Clemson.

### TIGER TRANSFERS

- The 2023-24 Tigers feature four student-athletes who were at different schools last season
- Clemson signed four players from the transfer portal last offseason. Maddi Cluse and Amani Freeman joined the Tigers from Miami (OH), Mackenzie Kramer came to upstate South Carolina from Lehigh, and Dayshanette Harris joined Clemson after playing four seasons at Pitt.
- The Tigers also signed a two-time junior college All-American, Nya Valentine, who spent the previous two seasons at Shelton State Community College.

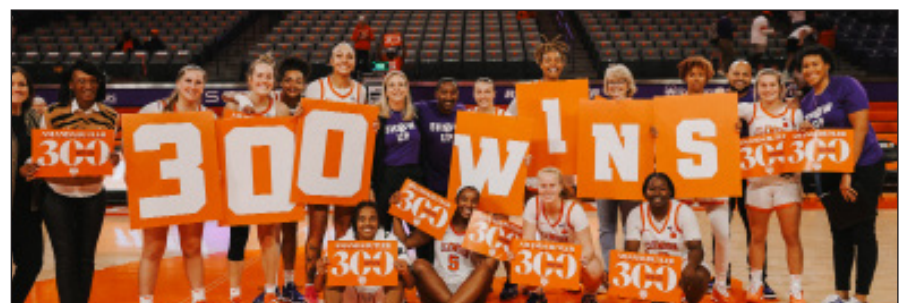
### SHARPSHOOTING TIGERS

- The Tigers offense has been setting school history so far this season, and has tied or broken several school records.
- In Clemson's 102-63 win over Longwood, the Tigers reached the 100-point plateau for the first time since 2009.
- CU dropped 33 points in the first quarter of the Longwood game, giving the Tigers their highest-scoring quarter in school history.
- The 14 three-point shots in Clemson's win against Longwood tied the school record for most threes made in a game.
- In Clemson's game against Arkansas - Pine Bluff - a 92-66 CU victory - the Tigers tied the record for most points scored against a division one opponent in the Amanda Butler era.
- With 12 three pointers made on 23 attempts against UAPB, Clemson had its best shooting performance with at least 15 attempts since 2013 when the Tigers went 12/22 from beyond the arc.
- Clemson ranks third in the ACC with 162 made three pointers, and sixth in three-point percentage

### MS. TIGER

- In Clemson's game against Tulsa earlier this season, Robinson saw action in her 128th career game which made her "Ms. Tiger" - setting the program record for most games played.
- With her start against Mercer on November 12 - the 124th start of her career - Robinson set the program record for most games started.
- Robinson has played in 148 career games and started 147. The one she didn't start (at Syracuse on 2/20/20) was due to injury and she still played 22 minutes of the game. She has started 119 consecutive games since then.

**SCAN TO SEE A DAY IN THE LIFE WITH AMARI ROBINSON**



# SEASON/CAREER BESTS

## #0 MACKENZIE KRAMER

Category	SEASON BEST	CAREER BEST
Pts	20 vs Charleston So. (11/10/23)	31 two times
3Pts	4 three times	7 two times
Assist	3 two times	11 vs Minnesota (11/13/22)
Blocks	-	1 three times
Rebounds	5 vs Wake Forest (1/28/24)	8 at Bucknell (1/30/21)
Free Throws	4 vs Charleston So. (11/10/23)	7 vs Colgate (2/8/23)
Steals	3 vs ETSU (12/22/23)	4 two times

## #1 DAYSHANETTE HARRIS

Category	SEASON BEST	CAREER BEST
Pts	25 two times	27 at Boston College (2/20/20)
3Pts	3 three times	4 vs Bryant ( 2/16/23)
Assist	10 two times	Same
Blocks	-	3 vs Wake Forest (1/30/20)
Rebounds	8 vs Virginia (2/4/24)	10 two times
Free Throws	11 vs Virginia (2/4/24)	Same
Steals	6 vs Virginia Tech (1/21/24)	Same

## #2 NYA VALENTINE

Category	SEASON BEST	CAREER BEST
Pts	11 vs Longwood (11/19/23)	-
3Pts	3 three times	-
Assist	4 vs Arkansas - PB (11/26/23)	-
Blocks	-	-
Rebounds	3 two times	-
Free Throws	2 vs Charleston So. (11/10/23)	-
Steals	2 vs NC State (1/25/24)	-

## #3 MAKAYLA ELMORE

Category	SEASON BEST	CAREER BEST
Pts	9 vs Charleston So. (11/12/23)	9 two times
3Pts	2 five times	Same
Assist	5 vs Syracuse (1/14/24)	Same
Blocks	2 three times	3 at Charleston So. (12/1/22)
Rebounds	11 two times	Same
Free Throws	3 vs North Carolina (12/31/23)	4 at Miami (2/27/22)
Steals	3 three times	3 five times

## #5 AMARI ROBINSON

Category	SEASON BEST	CAREER BEST
Pts	37 vs Syracuse (1/14/24)	Same
3Pts	3 two times	3 four times
Assist	8 vs Longwood (11/19/23)	Same
Blocks	2 vs Mississippi State (11/24/23)	2 11 times
Rebounds	10 vs Georgia Tech (1/11/24)	12 four times
Free Throws	10 vs Georgia St. (12/17/23)	12 vs Pitt (1/16/20)
Steals	3 two times	5 at Virginia (2/6/20)

## #10 KYLEE KELLERMANN

Category	SEASON BEST	CAREER BEST
Pts	-	-
3Pts	-	-
Assist	-	-
Blocks	-	-
Rebounds	1 two times	Same
Free Throws	-	-
Steals	-	-

## #11 MADDI CLUSE

Category	SEASON BEST	CAREER BEST
Pts	14 vs Winthrop (11/6/23)	30 vs Vermont (11/11/22)
3Pts	3 vs Arkansas - PB (11/26/23)	4 at Central Michigan (2/15/23)
Assist	5 vs Tulsa (11/25/23)	10 vs Bradley (12/16/22)
Blocks	-	2 two times
Rebounds	8 vs Charleston So. (11/10/23)	13 vs NIU (2/22/23)
Free Throws	4 two times	9 vs Vermont (11/11/22)
Steals	2 four times	5 vs Northern Illinois (1/19/22)

## #13 BELLA RANALLO

Category	SEASON BEST	CAREER BEST
Pts	3 vs Arkansas - PB (11/26/23)	-
3Pts	1 vs Arkansas - PB (11/26/23)	-
Assist	-	-
Blocks	-	-
Rebounds	1 vs Longwood (11/19/23)	Same
Free Throws	-	-
Steals	-	-

## #21 ENO INYANG

Category	SEASON BEST	CAREER BEST
Pts	10 vs North Carolina (12/31/23)	20 vs Mt. St. Mary's (11/28/21)
3Pts	-	-
Assist	1 four times	1 16 times
Blocks	3 vs ETSU (12/22/23)	4 two times
Rebounds	7 vs ETSU (12/22/23)	Same
Free Throws	3 vs Georgia St. (12/16/23)	8 vs Columbia (11/14/21)
Steals	3 vs Notre Dame (2/22/24)	3 four times

## #22 RUBY WHITEHORN

Category	SEASON BEST	CAREER BEST
Pts	20 vs Mississippi State (11/24/23)	29 vs Northern Arizona (11/26/22)
3Pts	3 vs Mississippi State (11/24/23)	Same
Assist	5 vs ETSU (12/22/23)	8 vs Western Carolina (12/10/22)
Blocks	3 vs Georgia Tech (1/11/24)	3 two times
Rebounds	10 vs Notre Dame (2/22/24)	Same
Free Throws	5 vs North Carolina (12/31/23)	Same
Steals	4 two times	4 three times

## #30 MADI OTT

Category	SEASON BEST	CAREER BEST
Pts	12 vs Longwood (11/19/23)	16 vs Wofford (11/10/22)
3Pts	4 vs Longwood (11/19/23)	4 four times
Assist	3 two times	3 five times
Blocks	-	1 vs Louisville (2/3/22)
Rebounds	8 vs Georgia Tech (2/15/24)	Same
Free Throws	2 vs Pitt (2/18/24)	3 vs Boston College (1/9/22)
Steals	4 vs Winthrop (11/6/23)	Same

## #33 DANIELLE RAUCH

Category	SEASON BEST	CAREER BEST
Pts	7 two times	18 at Wisconsin (12/9/21)
3Pts	2 three times	3 at Northwestern (2/13/22)
Assist	6 vs ETSU (12/22/23)	7 vs Iowa (2/6/22)
Blocks	-	1 two times
Rebounds	4 vs Winthrop (11/6/23)	8 vs Villanova (3/21/22)
Steals	3 two times	3 three times

## #34 AMANI FREEMAN

Category	SEASON BEST	CAREER BEST
Pts	13 vs Mercer (11/12/23)	17 at Akron (2/25/23)
3Pts	-	-
Assist	2 vs Mercer (11/12/23)	3 vs Loyola Chicago (11/28/22)
Blocks	-	4 at Purdue (12/19/21)
Rebounds	6 vs Air Force (12/19/23)	11 vs Tiffin (12/31/22)
Free Throws	6 vs Arkansas - PB (11/26/23)	Same
Steals	-	2 vs Oakland (12/17/22)



# HEAD COACH AMANDA BUTLER

SIXTH SEASON AT CLEMSON • 18TH YEAR OVERALL • FLORIDA '95



## CAREER HIGHLIGHTS

- 5 NCAA Tournament Appearances
- 11 Postseason berths
- A-10 Coach of the Year ('05-'06, Charlotte)
- USA U19 World Championship Team, Asst. Coach (2009)
- WBCA NCAA Division I National Coach of the Year Finalist ('15-'16, Florida) • WBCA District 2 Coach of the Year ('15-'16, Florida)
- ACC Coach of the Year ('18-'19, Clemson)
- Naismith Women's College Coach of the Year Semifinalist ('18-'19, Clemson)
- Recorded her 300th career game as a coach on 11/6/23 with Clemson's 71-41 win over Winthrop

## PERSONAL

**Born:** March 6, 1972

**Family:** Wife, Janna Magette, and children, Nehemiah and Lincoln

**Education:** Earned a bachelor's degree in exercise and sports science from Florida in 1995; earned a master's degree from Florida in 1997.

**Playing Experience:** Four-year starter at the University of Florida, leading the Gators to their first-ever NCAA tournament appearance in 1993.

**Assistant Coaching Experience:** Assistant Coach at Florida (1995-97), Assistant Coach at Austin Peay State (1997-2001), Assistant Coach at Charlotte (2001-2003), Associate Head Coach at Charlotte (2003-2005)

## CLEMSON COACHING STAFF



### JOY (CHEEK) SMITH

SIXTH SEASON AT CLEMSON • DUKE '10

**Born:** June 25, 1988

**Family:** Husband, Allen Smith and daughter, Harleigh

**Education:** Graduated from Duke in 2010

**Playing Experience:** On the court, she was a four-year letterwinner for the Blue Devils, scoring more than 1,000 career points. Smith was drafted by the WNBA's Indiana Fever with the 35th overall selection in the 2010 draft. She also played professionally in Leszno, Poland and had a brief stint with the WNBA's Washington Mystics. Smith was also a member of the ACC Honor Roll during her career at Duke.

**Assistant Coach Experience:** Assistant Coach at Duke, Assistant Coach Ohio State, Assistant Coach at Vanderbilt, Assistant Coach at Clemson (2018-Present)

**Coaching Philosophy:** "I coach to love, lead and serve the young women in our program. It gives me great pleasure to help guide, mentor and empower them in such an important stage of their lives. My goal is to help them be the best versions of themselves both on and off the court."

**Career Highlights:** 2018 WBCA Thirty Under 30



### DANIEL BARBER

SIXTH SEASON AT CLEMSON • FLORIDA '12

**Born:** West Palm Beach, FL

**Family:** Wife, Robyn and daughter, Mya Grace

**Education:** Earned a bachelor's degree in Nutrition with a Specialization in Dietetics from Florida in 2012; earned a master's degree in Leadership Development from Florida in 2014.

**Assistant Coach Experience:** Assistant Coach at UNC Asheville (2013-14), Assistant Coach at Stetson (2014-2018) and Assistant Coach at Clemson (2018-Present)

**Coaching Philosophy:** "My purpose in life is to inspire, empower, and make a difference in a young person's life. I strive each and every day to be an example of what it means to be a servant leader, and help create an environment for our young ladies where it is important to win both in the classroom and on the court. I am committed to developing our young ladies and equipping them with the necessary tools to become the best version of themselves."

**Career Highlights:** 2019 WBCA Thirty Under 30



### DARRICK GIBBS

1ST SEASON AT CLEMSON • WOFFORD '00

**Education:** Graduated from Wofford in '00

**Assistant Coach Experience:** Assistant Coach at College of Charleston (2001-03), Charlotte (2003-05) and Miami (2005-15)

**Head Coach Experience:** Head Coach at North Florida (2015-23)

**Personal Highlights:** Coached UNF's first-ever WNBA draft pick (Jazz Bond). During his time at UNF, the Ospreys set school records for points in a game and team assists with 126 points scored and 43 assists against Trinity Baptist.

# BUTLER VS. ALL COMPETITION

TEAM	CHARLOTTE		FLORIDA		CLEMSON		TOTAL
	W	L	W	L	W	L	
AIR FORCE					1	0	1-0
ALABAMA			10	3	0	2	10-5
ALABAMA A&M			1	0			1-0
ALABAMA ST			1	0	1	0	2-0
ALBANY			0	1			0-1
ALCORN ST					1	0	1-0
APPALACHIAN ST	1	0			1	0	2-0
ARIZONA ST			1	2			1-2
ARKANSAS			13	3	0	1	13-4
ARKANSAS - PB					1	0	1-0
ARKANSAS ST	1	0	2	0			3-0
AUBURN			8	6	1	1	9-7
BALL ST	0	1	1	0			1-1
BAYLOR			0	1			0-1
BELMONT			1	0	1	0	2-0
BETHUNE-COOKMAN	1	0					1-0
BOSTON COLLEGE					3	3	3-3
BROWN			0	1			0-1
CENTRAL MICH.			1	0			1-0
CHARLESTON SO.	1	0	2	0	2	0	5-0
CHARLOTTE			3	1	2	0	5-1
CHATTANOOGA			1	0			1-0
CLEMSON	1	0					1-0
COLL. OF CHARLESTON					1	0	1-0
COLORADO	0	1	1	0			1-1
COLUMBIA					0	1	0-1
CONNECTICUT			0	1			0-1
COPPIN ST			1	0			1-0
DAVIDSON	1	1			0	1	1-2
DAYTON	2	0	1	0	0	1	3-1
DELAWARE					0	1	0-1
DEPAUL			0	1			0-1
DREXEL			0	1			0-1
DUKE					2	3	2-3
DUQUESNE	2	1	1	0			3-1
E. WASHINGTON			0	1			0-1
ETSU					1	0	1-0
FAIRFIELD			1	0			1-0
FIU			3	0			3-0
FLORIDA	0	1			0	1	0-2
FLORIDA A&M			3	1			3-1
FLORIDA GULF COAST			3	1			3-1
FLORIDA ST			3	7	4	7	7-14
FORDHAM	2	0					2-0
FURMAN					2	0	2-0
GARDNER WEBB					1	0	1-0
GEORGE WASHINGTON	0	2					0-2
GEORGETOWN			2	0			2-0
GEORGIA			7	13			7-13
GEORGIA STATE			1	0	1	1	2-1
GEORGIA TECH					2	11	2-11
HAMPTON			1	1			1-1
HARVARD			1	0			1-0
HIGH POINT	1	0	0	1	2	0	3-1
HOLY CROSS			2	0			2-0
HOUSTON	2	0					2-0
ILLINOIS					1	0	1-0
ILLINOIS ST			0	1			0-1
INDIANA			0	1			0-1
IOWA					0	1	0-1
JACKSONVILLE			3	0			3-0
JAMES MADISON	1	0	1	0			2-0
KANSAS ST					0	1	0-1
KENNESAW ST			2	0			2-0
KENTUCKY			4	11			4-11
LA SALLE	1	1	2	0			3-1
LIPSCOMB					1	0	1-0
LONG BEACH ST			1	0			1-0
LONGWOOD			1	0	1	0	2-0
LOUISVILLE			0	1	0	7	0-8
LOYOLA MARYMOUNT	1	0					1-0
LSU			5	7	0	1	5-8
MARSHALL					1	0	1-0
MARYLAND					0	1	0-1
MASSACHUSETTS	2	0					2-0
MERCER					3	0	3-0
MIAMI (FL)			0	1	2	9	2-10
MIAMI (OH)			1	0			1-0
MICHIGAN			0	2			0-2

TEAM	CHARLOTTE		FLORIDA		CLEMSON		TOTAL
	W	L	W	L	W	L	
MINNESOTA	0	1					0-1
MISSISSIPPI ST			9	5	0	2	9-7
MISSOURI			0	6			0-6
MT. ST. MARY'S					1	0	1-0
MURRAY ST	1	0					1-0
NAVY			1	0	0	1	1-1
NC STATE			3	1	0	6	3-7
NEBRASKA			0	1			0-1
NORTH CAROLINA					0	7	0-7
NORTH CAROLINA A&T			1	0	0	1	1-1
NORTH FLORIDA			4	0	1	0	5-0
NORTHERN ARIZONA					1	0	1-0
NORTHERN IOWA			1	0			1-0
NORTHWESTERN			0	1	0	1	0-2
NOTRE DAME					3	4	3-4
OHIO			2	0	1	0	3-0
OHIO STATE			1	0			1-0
OKLAHOMA					1	0	1-0
OLD DOMINION	1	1	2	0			3-1
OLE MISS			7	4			7-4
OREGON STATE			1	0			1-0
PACIFIC			1	1			1-1
PENN STATE			0	1	1	1	1-2
PITTSBURGH			1	1	4	4	5-5
PRAIRIE VIEW A&M			1	0			1-0
PRESBYTERIAN					2	0	2-0
PROVIDENCE			1	0			1-0
RADFORD					1	0	1-0
RHODE ISLAND	1	1			1	0	2-1
RICHMOND	2	1			1	0	3-1
ROBERT MORRIS			3	0			3-0
RUTGERS			0	2			0-2
SAINT LOUIS	4	0	1	0			5-0
SAMFORD			1	0			1-0
SAN FRANCISCO			1	0			1-0
SAVANNAH ST			3	1			3-1
SOUTH ALABAMA			3	0			3-0
SOUTH CAROLINA			6	9	0	5	6-14
SOUTH DAKOTA					1	0	1-0
SOUTH FLORIDA			1	0			1-0
SOUTHEASTERN LA			1	0			1-0
SOUTHERN			2	0			2-0
SOUTHERN ILLINOIS			1	0			1-0
ST. BONAVENTURE	2	0					2-0
ST. FRANCIS (PA)	1	0	2	0			3-0
ST. JOSEPH'S	1	2					1-2
ST. JOHN'S			1	2			1-2
STETSON			5	0			5-0
SYRACUSE					2	5	2-5
TCU			1	0			1-0
TEMPLE	0	2	3	1			3-3
TENNESSEE			2	15	0	1	2-16
TENNESSEE ST			1	0			1-0
TEXAS A&M			1	6			1-6
TROY			2	0			2-0
TULSA	1	0			0	1	1-1
UAB			2	0			2-0
UCF			2	0			2-0
UCLA	0	1					0-1
UMBC			1	0			1-0
UNC WILMINGTON	1	0					1-0
UNCG	1	0					1-0
USC UPSTATE					1	0	1-0
VANDERBILT			5	8			5-8
VERMONT			1	0			1-0
VIRGINIA	0	1			5	1	5-2
VIRGINIA TECH	0	1	1	1	3	5	4-7
WAKE FOREST					6	4	6-4
WESTERN KENTUCKY	0	2					0-2
WINTHROP	2	0	1	0	1	0	4-0
WISCONSIN			1	1			1-1
WOFFORD			1	0	3	0	4-0
WYOMING	0	1					0-1
XAVIER	3	0	1	0			4-0
TOTALS	40	22	190	137	80	103	310-262

# 2023-24 COMBINED TEAM STATISTICS

## Game Records

Record	Overall	Home	Away	Neutral
ALL GAMES	11-16	9-6	1-8	1-2
CONFERENCE	4-11	3-5	1-6	0-0
NON-CONFERENCE	7-5	6-1	0-2	1-2

## Team Box Score

No.	Player				Total		3-Point		F-Throw		Rebounds											
		GP-GS	MIN	AVG	FG-FGA	FG%	3FG-3FGA	3FG%	FT-FTA	FT%	OFF	DEF	TOT	AVG	PF	DQ	A	TO	BLK	STL	PTS	AVG
5	ROBINSON, Amari	27-27	819:09	30.3	168-309	.544	25-63	.397	105-126	.833	79	101	180	6.7	55	2	39	76	3	28	466	17.3
1	HARRIS, Dayshanette	27-27	684:06	25.3	126-273	.462	18-55	.327	97-144	.674	24	73	97	3.6	65	2	136	88	2	47	367	13.6
22	WHITEHORN, Ruby	27-25	750:26	27.8	128-280	.457	22-79	.278	43-62	.694	40	102	142	5.3	56	3	42	87	10	40	321	11.9
0	KRAMER, Mackenzie	23-10	549:46	23.9	62-154	.403	44-121	.364	24-26	.923	2	32	34	1.5	14	0	22	19	0	11	192	8.3
11	CLUSE, Maddi	13-13	293:56	22.6	37-85	.435	6-18	.333	17-36	.472	15	39	54	4.2	23	1	15	17	0	12	97	7.5
3	ELMORE, MaKayla	27-25	678:02	25.1	41-120	.342	17-59	.288	8-14	.571	33	125	158	5.9	61	0	34	39	12	27	107	4.0
21	INYANG, Eno	24-2	342:35	14.3	30-88	.341	0-0	.000	15-19	.789	17	34	51	2.1	51	0	7	27	14	12	75	3.1
34	FREEMAN, Amani	25-0	272:51	10.9	29-51	.569	0-0	.000	18-30	.600	22	19	41	1.6	32	0	12	24	2	4	76	3.0
30	OTT, Madi	26-4	438:47	16.9	24-85	.282	20-69	.290	3-5	.600	7	37	44	1.7	27	0	27	17	0	10	71	2.7
2	VALENTINE, Nya	27-0	312:03	11.6	24-75	.320	21-63	.333	2-3	.667	3	14	17	0.6	11	0	20	25	0	6	71	2.6
33	RAUCH, Danielle	19-2	285:46	15.0	12-48	.250	11-42	.262	8-10	.800	0	28	28	1.5	13	0	31	28	0	15	43	2.3
13	RANALLO, Bella	7-0	08:39	1.2	1-4	.250	1-3	.333	0-0	.000	1	0	1	0.1	0	0	2	1	0	0	3	0.4
10	KELLERMANN, Kylee	7-0	08:39	1.2	0-2	.000	0-2	.000	0-0	.000	0	2	2	0.3	1	0	0	0	0	0	0	0.0
Team											63	68	131							12		
<b>Total</b>		<b>27</b>	<b>5445</b>		<b>682-1574</b>	<b>.433</b>	<b>185-574</b>	<b>.322</b>	<b>340-475</b>	<b>.716</b>	<b>306</b>	<b>674</b>	<b>980</b>	<b>36.3</b>	<b>409</b>	<b>8</b>	<b>387</b>	<b>460</b>	<b>43</b>	<b>212</b>	<b>1889</b>	<b>70.0</b>
<b>Opponents</b>		<b>27</b>	<b>5429</b>		<b>731-1688</b>	<b>.433</b>	<b>191-594</b>	<b>.322</b>	<b>238-346</b>	<b>.688</b>	<b>317</b>	<b>636</b>	<b>953</b>	<b>35.3</b>	<b>486</b>	<b>8</b>	<b>433</b>	<b>417</b>	<b>80</b>	<b>250</b>	<b>1891</b>	<b>70.0</b>

## Score by Periods

Team	1st	2nd	3rd	4th	OT	TOT
Clemson	486	433	482	477	11	1889
Opponents	441	441	474	521	14	1891

# BROADCAST CHEAT SHEET



**#0 Mackenzie Kramer**  
G • SR • 5-9  
St. Michael, Minn.



**#1 Dayshanette "Day" Harris**  
G • GR • 5-7  
Youngstown, Ohio



**#2 Nya Valentine**  
G • JR • 5-3  
Mobile, Ala.  
Nya - NY-uh



**#3 Makayla Elmore**  
F • JR • 6-3  
Fostoria, Ohio



**#5 Amari Robinson**  
F • GR • 6-0  
Douglasville, Ga.



**#10 Kylee Kellermann**  
G • FR • 5-6  
Charleston, S.C.



**#11 Maddi Cluse**  
G • JR • 5-10  
Sagamore Hills, Ohio



**#13 Bella Ranallo**  
G • FR • 5-6  
Lake Forest, Ill.



**#21 Eno Inyang**  
C • JR • 6-2  
St. Cloud, Fla.



**#22 Ruby Whitehorn**  
G • SO • 6-0  
Detroit, Mi.



**#30 Madi Ott**  
G • JR • 5-10  
Frisco, Texas



**#33 Danielle Rauch**  
G • GR • 5-8  
Syracuse, N.Y.



**#34 Amani Freeman**  
F • GR • 6-2  
Avon, Ind.



**Amanda Butler**  
Head Coach  
Florida, '95 | 6th Season

NOTE: Orange bar denotes projected starter.