



Officials: Jamie Luckie, AJ Desai, Tony Henderson

**Queens (NC) - 79**

**Record: 6-8**

NO.	Name	Min	FG		3P		FT		Rebounds			Fouls		TP	AS	TO	ST	Blocks		+/-
			M-A	M-A	M-A	OR	DR	TOT	PF	FD	BS	BA								
6	BJ McLaurin	F 28:06	6-10	4-8	2-4	1	3	4	3	3	18	4	0	0	0	0	0	0	0	-26
5	AJ McKee	G 29:46	6-17	3-11	3-3	1	1	2	1	2	18	1	4	1	0	0	0	0	-31	
10	Bryce Cash	G 25:58	3-8	0-0	1-1	0	3	3	1	1	7	0	0	2	0	2	0	2	-25	
11	Chris Ashby	G 30:24	5-11	3-9	1-1	0	0	0	1	1	14	0	0	0	0	0	0	0	-26	
13	Deyton Albury	G 24:58	4-10	1-3	1-2	1	4	5	0	1	10	0	1	1	0	3	0	3	-23	
3	Kalib Mathews	08:00	0-1	0-0	0-0	1	1	2	0	0	0	1	1	2	0	0	0	0	-11	
22	Jaxon Pollard	14:47	0-5	0-4	0-0	1	2	3	3	1	0	1	0	0	0	1	0	0	-1	
32	Malcolm Wilson	06:14	0-2	0-0	0-0	3	1	4	4	0	0	1	1	0	1	1	0	1	-6	
12	Logan Threatt	11:14	3-4	3-4	1-2	0	1	1	0	1	10	2	1	0	0	0	0	0	5	
0	Kobe George	09:10	0-2	0-1	0-0	0	1	1	0	0	0	1	0	0	0	0	0	0	-6	
1	Jacobi Sebock	09:09	1-3	0-1	0-0	0	1	1	1	0	2	1	1	0	0	0	0	0	-5	
8	Luke Krawczyk	02:14	0-1	0-1	0-0	0	1	1	1	0	0	0	1	0	0	0	0	0	5	
Team									4	2	6		0		0					
<b>Totals</b>			28-74	14-42	9-13	12	21	33	15	10	79	12	10	6	2	6			-30	

Shooting By Period		
1st FG%	13-37	35.1%
3PT%	6-17	35.3%
FT%	4-7	57.1%
2nd FG%	15-37	40.5%
3PT%	8-25	32.0%
FT%	5-6	83.3%
GMFG%	28-74	37.8%
3PT%	14-42	33.3%
FT%	9-13	69.2%

Dead Ball Rebounds: 2, 0

Technical Fouls: NONE

**Clemson - 109**

**Record: 10-1**

NO.	Name	Min	FG		3P		FT		Rebounds			Fouls		TP	AS	TO	ST	Blocks		+/-
			M-A	M-A	M-A	OR	DR	TOT	PF	FD	BS	BA								
4	Ian Schieffelin	F 19:06	2-4	0-0	0-0	0	6	6	2	0	4	4	1	0	1	1	14			
21	Chauncey Wiggins	F 23:00	5-9	1-3	2-2	1	5	6	3	1	13	1	2	1	0	0	28			
24	PJ Hall	F 18:35	11-13	2-2	3-3	0	4	4	2	5	27	1	1	1	4	0	20			
1	Chase Hunter	G 31:42	4-10	1-2	0-0	1	1	2	0	1	9	3	0	2	1	0	22			
11	Joseph Girard III	G 24:25	6-10	4-7	3-3	1	3	4	0	1	19	6	1	0	0	1	34			
10	RJ Godfrey	23:55	8-9	0-0	3-4	1	3	4	0	3	19	2	1	0	0	0	17			
0	Josh Beadle	23:01	3-3	1-1	1-3	0	2	2	1	3	8	3	0	1	0	0	9			
2	Dillon Hunter	23:18	3-5	1-2	0-0	1	3	4	2	0	7	3	1	0	0	0	24			
33	Bas Leyte	04:49	0-1	0-0	1-2	0	0	0	0	1	1	1	0	0	0	0	-6			
32	Daniel Nauseef	03:41	0-1	0-1	0-0	0	1	1	0	0	0	0	0	0	0	0	-2			
13	Andrew Latiff	02:14	1-2	0-1	0-0	1	1	2	0	0	2	0	0	0	0	0	-5			
20	Matt Kelly	02:14	0-1	0-0	0-0	0	0	0	0	0	0	0	0	1	0	0	-5			
Team									0	7	7		0		0					
<b>Totals</b>			43-68	10-19	13-17	6	36	42	10	15	109	24	7	6	6	2	30			

Shooting By Period		
1st FG%	27-38	71.1%
3PT%	6-9	66.7%
FT%	9-9	100%
2nd FG%	16-30	53.3%
3PT%	4-10	40.0%
FT%	4-8	50%
GMFG%	43-68	63.2%
3PT%	10-19	52.6%
FT%	13-17	76.5%

Dead Ball Rebounds: 2, 0

Technical Fouls: NONE

	QUE	CU
Biggest lead	0 (1 <sup>st</sup> 20:00)	37 (2 <sup>nd</sup> 2:31)
Best Scoring Run	6 (1 <sup>st</sup> 7:25)	14 (1 <sup>st</sup> 2:20)
Lead Changes	0	
Times Tied	1	
Time with Lead	00:00	39:27

Points from	QUE	CU
Turnovers	10	20
Paint	28	62
Second Chance	14	13
Fast Breaks	7	13
Bench	12	37

	Period by Period Scoring		
	1st	2nd	TOT
QUE	36	43	79
CU	69	40	109



**Period 1**

**Period Starters:**

<b>CU</b>	1 Hunter C	4 Schieffelin I	11 Girard III J	21 Wiggins C	24 Hall P
<b>QUE</b>	5 McKee A	6 McLaurin B	10 Cash B	11 Ashby C	13 Albury D

Game Time	CU	Score	Diff	QUE
20:00	24 HALL P jumpball won			6 MCLAURIN B jumpball lost
19:47	4 SCHIEFFELIN I 2pt FG in the paint, layup made (2)	<b>2-0</b>	<b>2</b>	
19:47	24 HALL P assist (1)			
19:17		<b>2-2</b>	<b>0</b>	13 ALBURY D 2pt FG in the paint, layup made (2)
18:57	24 HALL P 2pt FG in the paint, layup made (2)	<b>4-2</b>	<b>2</b>	
18:57	4 SCHIEFFELIN I assist (1)			
18:28				13 ALBURY D 2pt FG in the paint, layup missed
18:28	defensive rebound (1)			
18:10	24 HALL P 2pt FG outside the paint, jump shot made (4)	<b>6-2</b>	<b>4</b>	
17:41		<b>6-5</b>	<b>1</b>	11 ASHBY C 3pt FG , jump shot made (3)
17:41				6 MCLAURIN B assist (1)
17:25	1 HUNTER C 2pt FG in the paint, layup made (2)	<b>8-5</b>	<b>3</b>	
17:12				10 CASH B 2pt FG in the paint, layup blocked
17:12	4 SCHIEFFELIN I block (1)			
17:12				offensive rebound (1)
17:08				6 MCLAURIN B 3pt FG second chance, jump shot missed
17:06	11 GIRARD III J defensive rebound (1)			
16:53	10 GODFREY R 2pt FG in the paint, layup made (2)	<b>10-5</b>	<b>5</b>	
16:53	4 SCHIEFFELIN I assist (2)			
16:34				6 MCLAURIN B 3pt FG , jump shot missed
16:32	11 GIRARD III J defensive rebound (2)			
16:25	21 WIGGINS C 3pt FG , jump shot missed			
16:23	11 GIRARD III J offensive rebound (3)			
16:22	11 GIRARD III J 3pt FG second chance, jump shot made (3)	<b>13-5</b>	<b>8</b>	
16:11				13 ALBURY D 2pt FG in the paint, layup missed
16:09				13 ALBURY D offensive rebound (1)
16:07		<b>13-8</b>	<b>5</b>	5 MCKEE A 3pt FG second chance, jump shot made (3)
16:07				6 MCLAURIN B assist (2)
15:50	11 GIRARD III J 3pt FG , jump shot missed			
15:48				13 ALBURY D defensive rebound (2)
15:37				5 MCKEE A 3pt FG , jump shot missed
15:35	11 GIRARD III J defensive rebound (4)			
15:32	1 HUNTER C foul drawn (1)			11 ASHBY C foul personal (1 - 1)
15:32	Timeout media			
15:25	10 GODFREY R foul drawn (1)			32 WILSON M foul personal (1 - 2)
15:07	4 SCHIEFFELIN I 2pt FG in the paint, jump shot blocked			
15:07				32 WILSON M block (1)
15:04				defensive rebound (4)
14:40				5 MCKEE A 2pt FG in the paint, layup missed
14:35				32 WILSON M offensive rebound (1)
14:35				32 WILSON M 2pt FG second chance in the paint, layup missed
14:34	4 SCHIEFFELIN I defensive rebound (1)			



Official Basketball Play by Play - First Half  
**Queens (NC) at Clemson**  
 12/22/23 Littlejohn Coliseum, Clemson  
 2023-24 Clemson Men's Basketball

Game Time: 6:00 PM  
 Game Duration: 1:54  
 Attendance: 6,871

Officials: Jamie Luckie, AJ Desai, Tony Henderson

Game Time	CU	Score	Diff	QUE
14:31	11 GIRARD III J 2pt FG in the paint, layup made (5)	<b>15-8</b>	<b>7</b>	
14:02				3 MATHEWS K 2pt FG in the paint, layup missed
14:00	4 SCHIEFFELIN I defensive rebound (2)			
13:57	10 GODFREY R 2pt FG in the paint, layup missed			
13:55	10 GODFREY R offensive rebound (1)			
13:54	10 GODFREY R 2pt FG second chance in the paint, layup made (4)	<b>17-8</b>	<b>9</b>	
13:44		<b>17-11</b>	<b>6</b>	11 ASHBYC 3pt FG , jump shot made (6)
13:30	11 GIRARD III J 3pt FG , jump shot missed			
13:28				5 MCKEE A defensive rebound (1)
13:12				5 MCKEE A 3pt FG , jump shot missed
13:10				3 MATHEWS K offensive rebound (1)
13:07				11 ASHBYC 3pt FG second chance, jump shot missed
13:05	0 BEADLE J defensive rebound (1)			
12:59	10 GODFREY R foul drawn (2)			32 WILSON M foul shooting (2 - 3)
12:59	10 GODFREY R free throw 1 - 2 made (5)	<b>18-11</b>	<b>7</b>	
12:59	10 GODFREY R free throw 2 - 2 made (6)	<b>19-11</b>	<b>8</b>	
12:46				11 ASHBYC 3pt FG , jump shot missed
12:44	10 GODFREY R defensive rebound (2)			
12:37	11 GIRARD III J 2pt FG in the paint, layup blocked			
12:37				22 POLLARD J block (1)
12:33				22 POLLARD J defensive rebound (1)
12:30				22 POLLARD J 2pt FG in the paint, layup missed
12:28	10 GODFREY R defensive rebound (3)			
12:24	2 HUNTER D 2pt FG fast break in the paint, layup made (2)	<b>21-11</b>	<b>10</b>	
12:24	0 BEADLE J assist (1)			
12:10		<b>21-13</b>	<b>8</b>	6 MCLAURIN B 2pt FG in the paint, layup made (2)
11:55	24 HALL P 2pt FG in the paint, hook shot made (6)	<b>23-13</b>	<b>10</b>	
11:55	10 GODFREY R assist (1)			
11:40				13 ALBURY D 2pt FG in the paint, layup blocked
11:40	24 HALL P block (1)			
11:40				offensive rebound (9)
11:40	Timeout media			
11:27				5 MCKEE A 2pt FG second chance in the paint, layup missed
11:27				6 MCLAURIN B offensive rebound (1)
11:27	0 BEADLE J foul shooting (1 - 1)			6 MCLAURIN B foul drawn (1)
11:27				6 MCLAURIN B free throw 1 - 2 missed
11:27				offensive dead ball rebound (1)
11:27		<b>23-14</b>	<b>9</b>	6 MCLAURIN B free throw 2 - 2 made (3)
11:14	24 HALL P foul drawn (1)			6 MCLAURIN B foul shooting (1 - 4)
11:14	24 HALL P free throw 1 - 2 made (7)	<b>24-14</b>	<b>10</b>	
11:14	24 HALL P free throw 2 - 2 made (8)	<b>25-14</b>	<b>11</b>	
10:57	24 HALL P steal (1)			5 MCKEE A turnover bad pass (1)
10:52	24 HALL P 2pt FG fast break from turnover in the paint, dunk, made (10)	<b>27-14</b>	<b>13</b>	
10:41				13 ALBURY D 2pt FG in the paint, layup blocked
10:41	24 HALL P block (2)			
10:37	21 WIGGINS C defensive rebound (1)			



Official Basketball Play by Play - First Half  
**Queens (NC) at Clemson**  
 12/22/23 Littlejohn Coliseum, Clemson  
 2023-24 Clemson Men's Basketball

**Game Time:** 6:00 PM  
**Game Duration:** 1:54  
**Attendance:** 6,871

**Officials:** Jamie Luckie, AJ Desai, Tony Henderson

Game Time	CU	Score	Diff	QUE
10:37	10 GODFREY R 2pt FG fast break in the paint, dunk, made (8)	<b>29-14</b>	<b>15</b>	
10:37	2 HUNTER D assist (1)			
10:37				Timeout 30 Sec
10:15		<b>29-16</b>	<b>13</b>	6 MCLAURIN B 2pt FG in the paint, jump shot made (5)
09:57	24 HALL P foul drawn (2)			6 MCLAURIN B foul personal (2 - 5)
09:44	24 HALL P 2pt FG in the paint, jump shot made (12)	<b>31-16</b>	<b>15</b>	
09:44	0 BEADLE J assist (2)			
09:30	2 HUNTER D foul personal (1 - 2)			6 MCLAURIN B foul drawn (2)
09:13		<b>31-19</b>	<b>12</b>	5 MCKEE A 3pt FG , jump shot made (6)
09:13				12 THREATT L assist (1)
08:55	24 HALL P 2pt FG outside the paint, turnaround jump shot missed			
08:51				6 MCLAURIN B defensive rebound (2)
08:48		<b>31-21</b>	<b>10</b>	10 CASH B 2pt FG in the paint, layup made (2)
08:41	Timeout 30 Sec			
08:30	24 HALL P 2pt FG in the paint, dunk, made (14)	<b>33-21</b>	<b>12</b>	
08:30	4 SCHIEFFELIN I assist (3)			
08:19	21 WGGINS C steal (1)			5 MCKEE A turnover bad pass (2)
08:10	24 HALL P 3pt FG from turnover, jump shot made (17)	<b>36-21</b>	<b>15</b>	
08:10	1 HUNTER C assist (1)			
07:44		<b>36-24</b>	<b>12</b>	5 MCKEE A 3pt FG , jump shot made (9)
07:29	1 HUNTER C 2pt FG outside the paint, jump shot missed			
07:26				10 CASH B defensive rebound (1)
07:25		<b>36-26</b>	<b>10</b>	10 CASH B 2pt FG fast break in the paint, layup made (4)
07:25	21 WGGINS C foul shooting (1 - 3)			10 CASH B foul drawn (1)
07:25				Timeout media
07:25		<b>36-27</b>	<b>9</b>	10 CASH B free throw fast break 1 - 1 made (5)
07:07	10 GODFREY R 2pt FG in the paint, hook shot made (10)	<b>38-27</b>	<b>11</b>	
07:07	11 GIRARD III J assist (1)			
06:49				5 MCKEE A turnover travel (3)
06:35	10 GODFREY R 2pt FG from turnover in the paint, layup made (12)	<b>40-27</b>	<b>13</b>	
06:35	11 GIRARD III J assist (2)			
06:15		<b>40-29</b>	<b>11</b>	1 SEBOCK J 2pt FG in the paint, jump shot made (2)
05:46	0 BEADLE J 2pt FG outside the paint, jump shot made (2)	<b>42-29</b>	<b>13</b>	
05:25		<b>42-31</b>	<b>11</b>	11 ASHBY C 2pt FG in the paint, layup made (8)
05:11	4 SCHIEFFELIN I 2pt FG in the paint, jump shot missed			
05:08				13 ALBURY D defensive rebound (3)
04:59				22 POLLARD J 3pt FG , jump shot missed
04:57	4 SCHIEFFELIN I defensive rebound (3)			
04:47	24 HALL P 2pt FG in the paint, jump shot missed			
04:43				0 GEORGE K defensive rebound (1)
04:28				0 GEORGE K 3pt FG , jump shot missed
04:28	defensive rebound (14)			
04:14	11 GIRARD III J foul drawn (1)			5 MCKEE A foul shooting (1 - 6)
04:14	11 GIRARD III J free throw 1 - 3 made (6)	<b>43-31</b>	<b>12</b>	
04:14	11 GIRARD III J free throw 2 - 3 made (7)	<b>44-31</b>	<b>13</b>	
04:14	11 GIRARD III J free throw 3 - 3 made (8)	<b>45-31</b>	<b>14</b>	
04:03	1 HUNTER C steal (1)			13 ALBURY D turnover bad pass (1)



Official Basketball Play by Play - First Half  
**Queens (NC) at Clemson**  
 12/22/23 Littlejohn Coliseum, Clemson  
 2023-24 Clemson Men's Basketball

**Game Time:** 6:00 PM  
**Game Duration:** 1:54  
**Attendance:** 6,871

**Officials:** Jamie Luckie, AJ Desai, Tony Henderson

Game Time	CU	Score	Diff	QUE
03:56	24 HALL P 3pt FG from turnover, jump shot made (20)	<b>48-31</b>	<b>17</b>	
03:56	11 GIRARD III J assist (3)			
03:44				5 MCKEE A 3pt FG , jump shot missed
03:42	2 HUNTER D defensive rebound (1)			
03:37	11 GIRARD III J 3pt FG , jump shot made (11)	<b>51-31</b>	<b>20</b>	
03:25				1 SEBOCK J 3pt FG , jump shot missed
03:22	24 HALL P defensive rebound (1)			
03:13	21 WIGGINS C foul drawn (1)			1 SEBOCK J foul shooting (1 - 7)
03:13	Timeout media			
03:13	21 WIGGINS C free throw 1 - 2 made (1)	<b>52-31</b>	<b>21</b>	
03:13	21 WIGGINS C free throw 2 - 2 made (2)	<b>53-31</b>	<b>22</b>	
02:44				10 CASH B 2pt FG in the paint, layup missed
02:41	21 WIGGINS C defensive rebound (2)			
02:38	21 WIGGINS C turnover bad pass (1)			3 MATHEWS K steal (1)
02:37				10 CASH B 2pt FG from turnover in the paint, layup missed
02:37	defensive rebound (18)			
02:20	11 GIRARD III J 3pt FG , jump shot made (14)	<b>56-31</b>	<b>25</b>	
02:06		<b>56-34</b>	<b>22</b>	6 MCLAURIN B 3pt FG , jump shot made (8)
02:06				3 MATHEWS K assist (1)
01:55	21 WIGGINS C 2pt FG in the paint, dunk, made (4)	<b>58-34</b>	<b>24</b>	
01:55	4 SCHIEFFELIN I assist (4)			
01:32	4 SCHIEFFELIN I foul shooting (1 - 4)			6 MCLAURIN B foul drawn (3)
01:32		<b>58-35</b>	<b>23</b>	6 MCLAURIN B free throw 1 - 2 made (9)
01:32				6 MCLAURIN B free throw 2 - 2 missed
01:31	4 SCHIEFFELIN I defensive rebound (4)			
01:20	1 HUNTER C 2pt FG in the paint, jump shot missed			
01:19	2 HUNTER D offensive rebound (2)			
01:14	21 WIGGINS C 2pt FG second chance in the paint, jump shot made (6)	<b>60-35</b>	<b>25</b>	
01:14	11 GIRARD III J assist (4)			
01:06	1 HUNTER C steal (2)			5 MCKEE A turnover lost ball (4)
01:02	1 HUNTER C 2pt FG fast break from turnover in the paint, layup made (4)	<b>62-35</b>	<b>27</b>	
00:58				Timeout 30 Sec
00:45				32 WILSON M 2pt FG in the paint, layup blocked
00:45	1 HUNTER C block (1)			
00:41	21 WIGGINS C defensive rebound (3)			
00:38	4 SCHIEFFELIN I 2pt FG in the paint, dunk, made (4)	<b>64-35</b>	<b>29</b>	
00:38	21 WIGGINS C assist (1)			
00:26				11 ASHBY C 3pt FG , jump shot missed
00:24	4 SCHIEFFELIN I defensive rebound (5)			
00:20	11 GIRARD III J 2pt FG fast break in the paint, layup made (16)	<b>66-35</b>	<b>31</b>	
00:12	4 SCHIEFFELIN I foul shooting (2 - 5)			12 THREATT L foul drawn (1)
00:12				12 THREATT L free throw 1 - 2 missed
00:12				offensive dead ball rebound (2)
00:12		<b>66-36</b>	<b>30</b>	12 THREATT L free throw 2 - 2 made (1)
00:02	1 HUNTER C 3pt FG , jump shot made (7)	<b>69-36</b>	<b>33</b>	
00:02	2 HUNTER D assist (2)			
<b>END OF PERIOD</b>				



Official Basketball PlaybyPlay - First Half  
**Queens (NC) at Clemson**  
12/22/23 Littlejohn Coliseum, Clemson  
2023-24 Clemson Men's Basketball

**Game Time:** 6:00 PM  
**Game Duration:** 1:54  
**Attendance:** 6,871

**Officials:** Jamie Luckie, AJ Desai, Tony Henderson

Game Time	CU	Score	Diff	QUE
CU 69-36 QUE				



**Queens (NC) - 36**

NO.	Name	Min	FG		3P	Rebounds			Fouls		TP	AS	TO	ST	Blocks		+/-	
			M-A	M-A	M-A	OR	DR	TOT	PF	FD					BS	BA		
6	BJ McLaurin	F 13:32	3-5	1-3	2-4	1	1	2	2	3	9	2	0	0	0	0	0	-24
5	AJ McKee	G 16:50	3-8	3-6	0-0	0	1	1	1	0	9	0	4	0	0	0	0	-28
10	Bryce Cash	G 13:27	2-5	0-0	1-1	0	1	1	0	1	5	0	0	0	0	1	-21	
11	Chris Ashby	G 17:53	3-6	2-5	0-0	0	0	0	1	0	8	0	0	0	0	0	-22	
13	Deyton Albury	G 10:24	1-5	0-0	0-0	1	2	3	0	0	2	0	1	0	0	2	-21	
3	Kalib Mathews	04:48	0-1	0-0	0-0	1	0	1	0	0	0	1	0	1	0	0	-11	
22	Jaxon Pollard	06:49	0-2	0-1	0-0	0	1	1	0	0	0	0	0	0	1	0	-6	
32	Malcolm Wilson	03:31	0-2	0-0	0-0	1	0	1	2	0	0	0	0	0	1	1	-8	
12	Logan Threatt	04:10	0-0	0-0	1-2	0	0	0	0	1	1	1	0	0	0	0	-1	
0	Kobe George	04:24	0-1	0-1	0-0	0	1	1	0	0	0	0	0	0	0	0	-12	
1	Jacobi Sebock	04:12	1-2	0-1	0-0	0	0	0	1	0	2	0	0	0	0	0	-11	
Team						2	1	3			0		0					
<b>Totals</b>			13-37	6-17	4-7	6	8	14	7	5	36	4	5	1	2	4	-33	

Shooting By Period		
1st FG%	13-37	35.1%
3PT%	6-17	35.3%
FT%	4-7	57.1%
GMFG%	13-37	35.1%
3PT%	6-17	35.3%
FT%	4-7	57.1%

Dead Ball Rebounds: 2, 0

Technical Fouls: NONE

**Clemson - 69**

NO.	Name	Min	FG		3P	Rebounds			Fouls		TP	AS	TO	ST	Blocks		+/-
			M-A	M-A	M-A	OR	DR	TOT	PF	FD					BS	BA	
4	Ian Schieffelin	F 14:15	2-4	0-0	0-0	0	5	5	2	0	4	4	0	0	1	1	19
21	Chauncey Wiggins	F 13:11	2-3	0-1	2-2	0	3	3	1	1	6	1	1	1	0	0	27
24	PJ Hall	F 09:39	8-10	2-2	2-2	0	1	1	0	2	20	1	0	1	2	0	20
1	Chase Hunter	G 16:19	3-5	1-1	0-0	0	0	0	0	1	7	1	0	2	1	0	24
11	Joseph Girard III	G 17:01	5-8	3-5	3-3	1	3	4	0	1	16	4	0	0	0	1	33
10	RJ Godfrey	11:00	5-6	0-0	2-2	1	2	3	0	2	12	1	0	0	0	0	10
0	Josh Beadle	08:59	1-1	0-0	0-0	0	1	1	1	0	2	2	0	0	0	0	11
2	Dillon Hunter	08:58	1-1	0-0	0-0	1	1	2	1	0	2	2	0	0	0	0	26
33	Bas Leyte	00:38	0-0	0-0	0-0	0	0	0	0	0	0	0	0	0	0	0	-5
Team						0	3	3			0		0				
<b>Totals</b>			27-38	6-9	9-9	3	19	22	5	7	69	16	1	4	4	2	33

Shooting By Period		
1st FG%	27-38	71.1%
3PT%	6-9	66.7%
FT%	9-9	100%
GMFG%	27-38	71.1%
3PT%	6-9	66.7%
FT%	9-9	100.0%

Dead Ball Rebounds: 0, 0

Technical Fouls: NONE

	QUE	CU
Biggest lead	0 (1 <sup>st</sup> 20:00)	33 (1 <sup>st</sup> 0:02)
Best Scoring Run	6 (1 <sup>st</sup> 7:25)	14 (1 <sup>st</sup> 2:20)
Lead Changes	0	
Times Tied	1	
Time with Lead	00:00	19:27

Points from	QUE	CU
Turnovers	0	12
Paint	14	38
Second Chance	4	7
Fast Breaks	3	10
Bench	3	16

	Period by Period Scoring		
	1st	2nd	TOT
QUE	36	43	79
CU	69	40	109



**Period 2**

**Period Starters:**

<b>CU</b>	1 Hunter C	4 Schieffelin I	11 Girard III J	21 Wiggins C	24 Hall P
<b>QUE</b>	5 McKee A	6 McLaurin B	10 Cash B	11 Ashby C	13 Albury D

Game Time	CU	Score	Diff	QUE
19:35		<b>69-39</b>	<b>30</b>	13 ALBURY D 3pt FG , jump shot made (5)
19:35				6 MCLAURIN B assist (3)
19:21	21 WIGGINS C 3pt FG , jump shot made (9)	<b>72-39</b>	<b>33</b>	
19:21	11 GIRARD III J assist (5)			
19:04		<b>72-42</b>	<b>30</b>	11 ASHBY C 3pt FG , jump shot made (11)
19:04				6 MCLAURIN B assist (4)
18:54	11 GIRARD III J turnover bad pass (1)			10 CASH B steal (1)
18:51		<b>72-44</b>	<b>28</b>	10 CASH B 2pt FG fast break from turnover in the paint, dunk, made (7)
18:27	jump ball situation			
18:21	11 GIRARD III J 3pt FG , jump shot missed			
18:20				defensive rebound (15)
18:06				5 MCKEE A 3pt FG , jump shot missed
18:04	defensive rebound (23)			
17:48	21 WIGGINS C 2pt FG in the paint, jump shot missed			
17:44	21 WIGGINS C offensive rebound (4)			
17:44	21 WIGGINS C 2pt FG second chance in the paint, layup made (11)	<b>74-44</b>	<b>30</b>	
17:30				11 ASHBY C 3pt FG , jump shot missed
17:28	21 WIGGINS C defensive rebound (5)			
17:26	21 WIGGINS C turnover bad pass (2)			10 CASH B steal (2)
17:18				10 CASH B 2pt FG from turnover in the paint, layup blocked
17:18	24 HALL P block (3)			
17:18				offensive rebound (16)
17:15		<b>74-47</b>	<b>27</b>	6 MCLAURIN B 3pt FG from turnover second chance, jump shot made (12)
17:15				5 MCKEE A assist (1)
16:55	24 HALL P 2pt FG in the paint, layup made (22)	<b>76-47</b>	<b>29</b>	
16:53	Timeout 30 Sec			
16:45		<b>76-49</b>	<b>27</b>	13 ALBURY D 2pt FG in the paint, layup made (7)
16:31	11 GIRARD III J 3pt FG , jump shot made (19)	<b>79-49</b>	<b>30</b>	
16:31	10 GODFREY R assist (2)			
15:58				5 MCKEE A 3pt FG , jump shot missed
15:57	24 HALL P defensive rebound (2)			
15:46	10 GODFREY R foul drawn (3)			10 CASH B foul shooting (1 - 1)
15:46	Timeout media			
15:46	10 GODFREY R free throw 1 - 2 missed			
15:46	offensive dead ball rebound (1)			
15:46	10 GODFREY R free throw 2 - 2 made (13)	<b>80-49</b>	<b>31</b>	
15:33				13 ALBURY D 3pt FG , jump shot blocked
15:33	24 HALL P block (4)			
15:30				5 MCKEE A offensive rebound (2)
15:29		<b>80-51</b>	<b>29</b>	5 MCKEE A 2pt FG second chance in the paint, layup made (11)





Official Basketball Play by Play - Second Half  
**Queens (NC) at Clemson**  
 12/22/23 Littlejohn Coliseum, Clemson  
 2023-24 Clemson Men's Basketball

**Game Time:** 6:00 PM  
**Game Duration:** 1:54  
**Attendance:** 6,871

**Officials:** Jamie Luckie, AJ Desai, Tony Henderson

Game Time	CU	Score	Diff	QUE
15:08	10 GODFREY R 2pt FG in the paint, layup made (15)	<b>82-51</b>	<b>31</b>	
15:08	11 GIRARD III J assist (6)			
14:49				6 MCLAURIN B 3pt FG , jump shot missed
14:47	24 HALL P defensive rebound (3)			
14:38	10 GODFREY R 2pt FG in the paint, layup made (17)	<b>84-51</b>	<b>33</b>	
14:38	2 HUNTER D assist (3)			
14:25				11 ASHBY C 3pt FG , jump shot missed
14:24	24 HALL P defensive rebound (4)			
14:18	1 HUNTER C 2pt FG in the paint, jump shot missed			
14:16				10 CASH B defensive rebound (2)
14:09				5 MCKEE A 3pt FG , jump shot missed
14:06	2 HUNTER D defensive rebound (3)			
14:05	2 HUNTER D turnover bad pass (1)			5 MCKEE A steal (1)
14:02	24 HALL P foul shooting (1 - 1)			5 MCKEE A foul drawn (1)
14:02		<b>84-52</b>	<b>32</b>	5 MCKEE A free throw fast break 1 - 2 made (12)
14:02		<b>84-53</b>	<b>31</b>	5 MCKEE A free throw fast break 2 - 2 made (13)
13:40	21 WIGGINS C 2pt FG in the paint, jump shot missed			
13:37	1 HUNTER C offensive rebound (1)			
13:37	1 HUNTER C 2pt FG second chance in the paint, layup made (9)	<b>86-53</b>	<b>33</b>	
13:23		<b>86-55</b>	<b>31</b>	11 ASHBY C 2pt FG in the paint, jump shot made (13)
13:23	21 WIGGINS C foul shooting (2 - 2)			11 ASHBY C foul drawn (1)
13:23		<b>86-56</b>	<b>30</b>	11 ASHBY C free throw 1 - 1 made (14)
13:02	2 HUNTER D 3pt FG , jump shot missed			
13:01				10 CASH B defensive rebound (3)
13:01	jump ball situation			
12:43				3 MATHEWS K turnover lost ball (1)
12:25	2 HUNTER D 2pt FG from turnover in the paint, layup missed			
12:22				12 THREATT L defensive rebound (1)
12:15				10 CASH B 2pt FG in the paint, layup missed
12:14	0 BEADLE J defensive rebound (2)			
12:11	21 WIGGINS C 2pt FG fast break in the paint, dunk, made (13)	<b>88-56</b>	<b>32</b>	
12:11	0 BEADLE J assist (3)			
11:51				22 POLLARD J 3pt FG , jump shot missed
11:48	4 SCHIEFFELIN I defensive rebound (6)			
11:30	4 SCHIEFFELIN I turnover bad pass (1)			3 MATHEWS K steal (2)
11:23				12 THREATT L 3pt FG from turnover, jump shot missed
11:21	21 WIGGINS C defensive rebound (6)			
11:11	1 HUNTER C 3pt FG , jump shot missed			
11:10				3 MATHEWS K defensive rebound (2)
10:56	0 BEADLE J steal (1)			12 THREATT L turnover bad pass (1)
10:50	0 BEADLE J foul drawn (1)			22 POLLARD J foul shooting (1 - 2)
10:50	Timeout media			
10:50	0 BEADLE J free throw fast break 1 - 2 missed			
10:50	offensive dead ball rebound (2)			
10:50	0 BEADLE J free throw fast break 2 - 2 made (3)	<b>89-56</b>	<b>33</b>	
10:34				13 ALBURY D 3pt FG , jump shot missed
10:32				32 WILSON M offensive rebound (2)



Official Basketball Play by Play - Second Half  
**Queens (NC) at Clemson**  
 12/22/23 Littlejohn Coliseum, Clemson  
 2023-24 Clemson Men's Basketball

**Game Time:** 6:00 PM  
**Game Duration:** 1:54  
**Attendance:** 6,871

**Officials:** Jamie Luckie, AJ Desai, Tony Henderson

Game Time	CU	Score	Diff	QUE
10:33	0 BEADLE J foul drawn (2)			32 WILSON M foul offensive (3 - 3)
10:33				32 WILSON M turnover offensive (1)
10:21	24 HALL P 2pt FG from turnover in the paint, layup made (24)	<b>91-56</b>	<b>35</b>	
10:21	24 HALL P foul drawn (3)			32 WILSON M foul shooting (4 - 4)
10:21	24 HALL P free throw 1 - 1 made (25)	<b>92-56</b>	<b>36</b>	
10:08				5 MCKEE A 3pt FG , jump shot missed
10:08				offensive rebound (23)
09:46				0 GEORGE K 2pt FG second chance outside the paint, jump shot missed
09:44				22 POLLARD J offensive rebound (2)
09:41		<b>92-58</b>	<b>34</b>	13 ALBURY D 2pt FG second chance in the paint, layup made (9)
09:41				22 POLLARD J assist (1)
09:24	24 HALL P foul offensive (2 - 3)			22 POLLARD J foul drawn (1)
09:24	24 HALL P turnover offensive (1)			
09:09				6 MCLAURIN B 3pt FG from turnover, jump shot missed
09:09	defensive rebound (34)			
08:44	1 HUNTER C 2pt FG in the paint, jump shot missed			
08:42				22 POLLARD J defensive rebound (3)
08:31		<b>92-61</b>	<b>31</b>	6 MCLAURIN B 3pt FG , jump shot made (15)
08:31				0 GEORGE K assist (1)
08:18	24 HALL P foul drawn (4)			22 POLLARD J foul personal (2 - 5)
08:11	24 HALL P 2pt FG in the paint, layup made (27)	<b>94-61</b>	<b>33</b>	
07:59				22 POLLARD J 3pt FG , jump shot missed
07:57	1 HUNTER C defensive rebound (2)			
07:52	24 HALL P foul drawn (5)			22 POLLARD J foul personal (3 - 6)
07:52	Timeout media			
07:46	10 GODFREY R 2pt FG in the paint, jump shot made (19)	<b>96-61</b>	<b>35</b>	
07:46	1 HUNTER C assist (2)			
07:38	2 HUNTER D foul shooting (2 - 4)			13 ALBURY D foul drawn (1)
07:38		<b>96-62</b>	<b>34</b>	13 ALBURY D free throw 1 - 2 made (10)
07:38				13 ALBURY D free throw 2 - 2 missed
07:38	10 GODFREY R defensive rebound (4)			
07:36	10 GODFREY R turnover bad pass (1)			13 ALBURY D steal (1)
07:21		<b>96-65</b>	<b>31</b>	6 MCLAURIN B 3pt FG from turnover, jump shot made (18)
07:21				12 THREATT L assist (2)
06:54	1 HUNTER C 2pt FG outside the paint, jump shot missed			
06:52				6 MCLAURIN B defensive rebound (3)
06:36				1 SEBOCK J turnover out of bounds (1)
06:23	0 BEADLE J 2pt FG from turnover in the paint, layup made (5)	<b>98-65</b>	<b>33</b>	
06:23	33 LEYTE B assist (1)			
06:14		<b>98-68</b>	<b>30</b>	12 THREATT L 3pt FG , jump shot made (4)
06:14				1 SEBOCK J assist (1)
05:51	33 LEYTE B 2pt FG in the paint, jump shot missed			
05:49				13 ALBURY D defensive rebound (4)
05:36				22 POLLARD J 3pt FG , jump shot missed
05:35	defensive rebound (37)			
05:06	2 HUNTER D 3pt FG , jump shot made (5)	<b>101-68</b>	<b>33</b>	



Official Basketball Play by Play - Second Half  
**Queens (NC) at Clemson**  
 12/22/23 Littlejohn Coliseum, Clemson  
 2023-24 Clemson Men's Basketball

**Game Time:** 6:00 PM  
**Game Duration:** 1:54  
**Attendance:** 6,871

**Officials:** Jamie Luckie, AJ Desai, Tony Henderson

Game Time	CU	Score	Diff	QUE
05:06	1 HUNTER C assist (3)			
04:49		<b>101-70</b>	<b>31</b>	5 MCKEE A 2pt FG in the paint, jump shot made (15)
04:37	33 LEYTE B foul drawn (1)			6 MCLAURIN B foul personal (3 - 7)
04:37	33 LEYTE B 1&1 free throw 1 made (1)	<b>102-70</b>	<b>32</b>	
04:37	33 LEYTE B 1&1 free throw 2 missed			
04:36				6 MCLAURIN B defensive rebound (4)
04:21				11 ASHBY C 3pt FG , jump shot missed
04:21	defensive rebound (38)			
03:54	21 WGGINS C 3pt FG , jump shot missed			
03:52				13 ALBURY D defensive rebound (5)
03:41	Timeout media			
03:33				5 MCKEE A 3pt FG , jump shot missed
03:31	32 NAUSEEF D defensive rebound (1)			
03:03	0 BEADLE J 3pt FG , jump shot made (8)	<b>105-70</b>	<b>35</b>	
02:47				5 MCKEE A 2pt FG outside the paint, jump shot missed
02:45	2 HUNTER D defensive rebound (4)			
02:31	2 HUNTER D 2pt FG in the paint, layup made (7)	<b>107-70</b>	<b>37</b>	
02:14		<b>107-72</b>	<b>35</b>	5 MCKEE A 2pt FG in the paint, jump shot made (17)
02:14	21 WGGINS C foul shooting (3 - 5)			5 MCKEE A foul drawn (2)
02:14		<b>107-73</b>	<b>34</b>	5 MCKEE A free throw 1 - 1 made (18)
01:47	13 LATIFF A 3pt FG , jump shot missed			
01:44				1 SEBOCK J defensive rebound (1)
01:28				8 KRAWCZYK L 3pt FG , jump shot missed
01:25	13 LATIFF A defensive rebound (1)			
01:09	0 BEADLE J foul drawn (3)			8 KRAWCZYK L foul personal (1 - 8)
01:09	0 BEADLE J 1&1 free throw 1 missed			
01:08				32 WILSON M defensive rebound (3)
00:40				1 SEBOCK J 2pt FG outside the paint, jump shot missed
00:38				32 WILSON M offensive rebound (4)
00:37		<b>107-76</b>	<b>31</b>	12 THREATT L 3pt FG second chance, jump shot made (7)
00:37				32 WILSON M assist (1)
00:23	32 NAUSEEF D 3pt FG , jump shot missed			
00:20				8 KRAWCZYK L defensive rebound (1)
00:11	20 KELLY M steal (1)			8 KRAWCZYK L turnover bad pass (1)
00:04	20 KELLY M 2pt FG from turnover in the paint, layup missed			
00:00	13 LATIFF A offensive rebound (2)			
00:03	13 LATIFF A 2pt FG from turnover second chance in the paint, layup made (2)	<b>109-76</b>	<b>33</b>	
00:00		<b>109-79</b>	<b>30</b>	12 THREATT L 3pt FG , jump shot made (10)
<b>END OF GAME</b>				
<b>CU 109-79 QUE</b>				



Officials: Jamie Luckie, AJ Desai, Tony Henderson

**Queens (NC) - 43**

NO.	Name	Min	FG		3P		FT		Rebounds			Fouls		TP	AS	TO	ST	Blocks		+/-	
			M-A	M-A	M-A	OR	DR	TOT	PF	FD	BS	BA									
6	BJ McLaurin	F 14:34	3-5	3-5	0-0	0	2	2	1	0	9	2	0	0	0	0	0	0	0	0	-2
5	AJ McKee	G 12:56	3-9	0-5	3-3	1	0	1	0	2	9	1	0	1	0	0	0	0	0	0	-3
10	Bryce Cash	G 12:31	1-3	0-0	0-0	0	2	2	1	0	2	0	0	2	0	0	1	0	1	-4	
11	Chris Ashby	G 12:31	2-5	1-4	1-1	0	0	0	0	1	6	0	0	0	0	0	0	0	0	-4	
13	Deyton Albury	G 14:34	3-5	1-3	1-2	0	2	2	0	1	8	0	0	1	0	0	1	0	1	-2	
3	Kalib Mathews	03:12	0-0	0-0	0-0	0	1	1	0	0	0	0	1	1	1	0	0	0	0	0	
22	Jaxon Pollard	07:58	0-3	0-3	0-0	1	1	2	3	1	0	1	0	0	0	0	0	0	0	5	
12	Logan Threatt	07:04	3-4	3-4	0-0	0	1	1	0	0	9	1	1	0	0	0	0	0	0	6	
0	Kobe George	04:46	0-1	0-0	0-0	0	0	0	0	0	0	1	0	0	0	0	0	0	0	6	
32	Malcolm Wilson	02:43	0-0	0-0	0-0	2	1	3	2	0	0	1	1	0	0	0	0	0	0	2	
1	Jacobi Sebock	04:57	0-1	0-0	0-0	0	1	1	0	0	0	1	1	0	0	0	0	0	0	6	
8	Luke Krawczyk	02:14	0-1	0-1	0-0	0	1	1	1	0	0	0	1	0	0	0	0	0	0	5	
Team									2	1	3			0							
<b>Totals</b>			15-37	8-25	5-6	6	13	19	8	5	43	8	5	5	0	2	3				

Shooting By Period		
2 <sup>nd</sup> FG%	15-37	40.5%
3PT%	8-25	32.0%
FT%	5-6	83.3%
GMFG%	15-37	40.5%
3PT%	8-25	32.0%
FT%	5-6	83.3%

Dead Ball Rebounds: 0, 0

Technical Fouls: NONE

**Clemson - 40**

NO.	Name	Min	FG		3P		FT		Rebounds			Fouls		TP	AS	TO	ST	Blocks		+/-
			M-A	M-A	M-A	OR	DR	TOT	PF	FD	BS	BA								
4	Ian Schieffelin	F 04:51	0-0	0-0	0-0	0	1	1	0	0	0	0	0	1	0	0	0	0	0	-5
21	Chauncey Wiggins	F 09:49	3-6	1-2	0-0	1	2	3	2	0	7	0	1	0	0	0	0	0	0	1
24	PJ Hall	F 08:56	3-3	0-0	1-1	0	3	3	2	3	7	0	1	0	2	0	0	0	0	
1	Chase Hunter	G 15:23	1-5	0-1	0-0	1	1	2	0	0	2	2	0	0	0	0	0	0	-2	
11	Joseph Girard III	G 07:24	1-2	1-2	0-0	0	0	0	0	0	3	2	1	0	0	0	0	0	1	
10	RJ Godfrey	12:55	3-3	0-0	1-2	0	1	1	0	1	7	1	1	0	0	0	0	0	7	
2	Dillon Hunter	14:20	2-4	1-2	0-0	0	2	2	1	0	5	1	1	0	0	0	0	0	-2	
0	Josh Beadle	14:02	2-2	1-1	1-3	0	1	1	0	3	6	1	0	1	0	0	0	0	-2	
33	Bas Leyte	04:11	0-1	0-0	1-2	0	0	0	0	1	1	1	0	0	0	0	0	0	-1	
32	Daniel Nauseef	03:41	0-1	0-1	0-0	0	1	1	0	0	0	0	0	0	0	0	0	0	-2	
13	Andrew Latiff	02:14	1-2	0-1	0-0	1	1	2	0	0	2	0	0	0	0	0	0	0	-5	
20	Matt Kelly	02:14	0-1	0-0	0-0	0	0	0	0	0	0	0	0	1	0	0	0	0	-5	
Team									0	4	4			0						
<b>Totals</b>			16-30	4-10	4-8	3	17	20	5	8	40	8	6	2	2	0	-3			

Shooting By Period		
2 <sup>nd</sup> FG%	16-30	53.3%
3PT%	4-10	40.0%
FT%	4-8	50%
GMFG%	16-30	53.3%
3PT%	4-10	40.0%
FT%	4-8	50.0%

Dead Ball Rebounds: 2, 0

Technical Fouls: NONE

	QUE	CU
Biggest lead	0 (1 <sup>st</sup> 20:00)	37 (2 <sup>nd</sup> 2:31)
Best Scoring Run	6 (2 <sup>nd</sup> 0:37)	6 (2 <sup>nd</sup> 10:21)
Lead Changes	0	
Times Tied	0	
Time with Lead	00:00	19:35

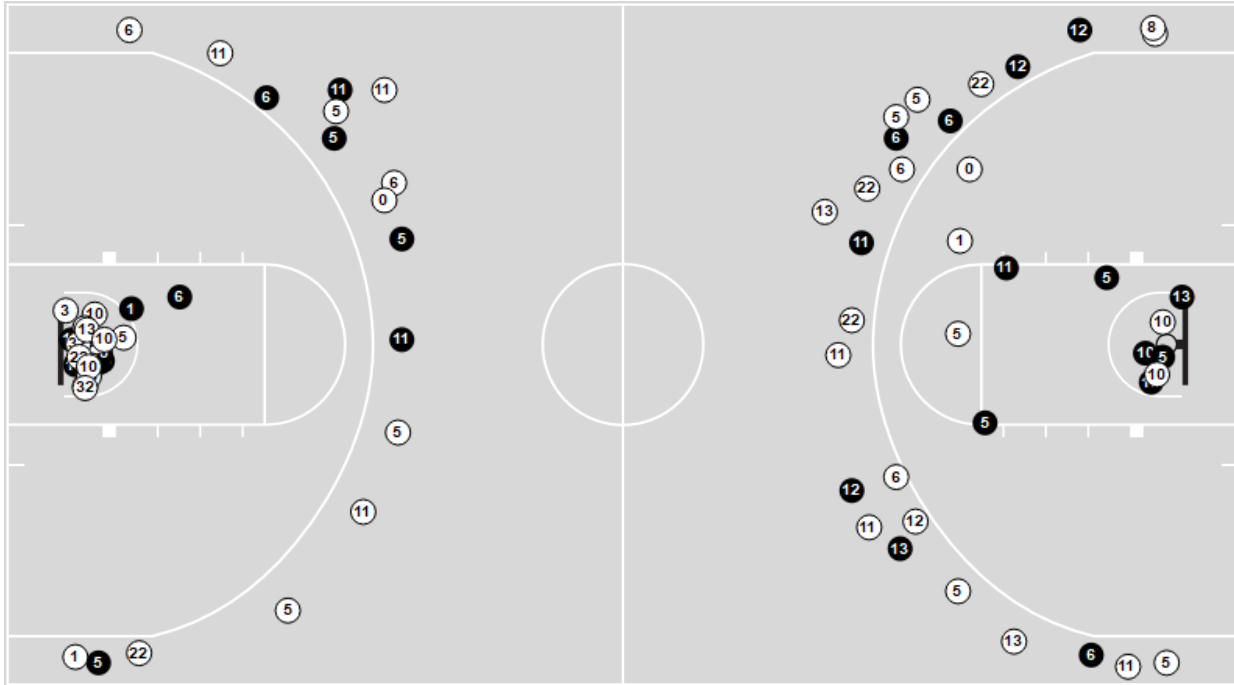
	QUE	CU
Points from		
Turnovers	10	8
Paint	14	24
Second Chance	10	6
Fast Breaks	4	3
Bench	9	21

	Period by Period Scoring		
	1st	2nd	TOT
QUE	36	43	79
CU	69	40	109

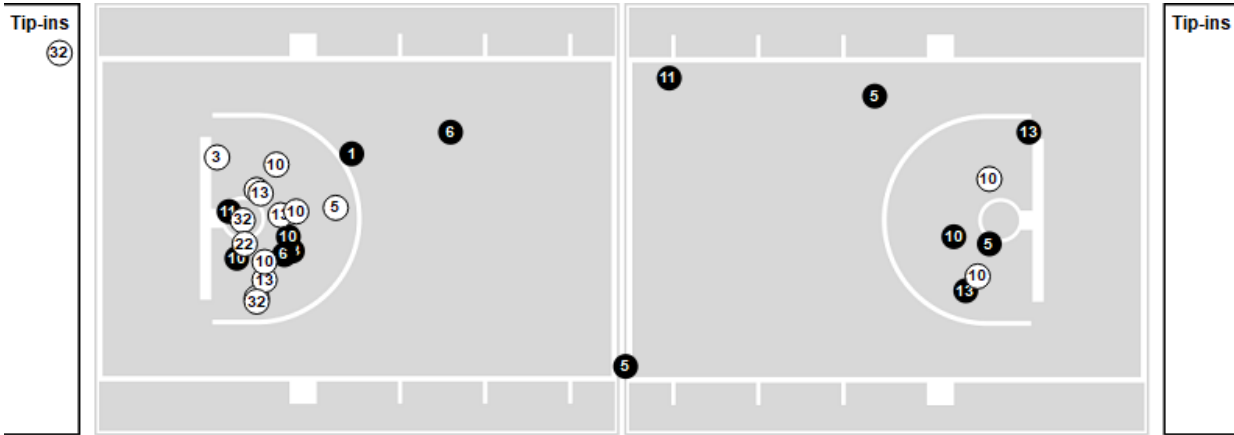


Players => All ; FG Types => All ; Results => All ;  
**Queens (NC)**

**All Field Goals**



**Shots in the Paint**



● Made   ● Missed   N - Player Number

Queens (NC)	M/A	%
Field Goals	28/74	38
2 Points	14/32	44
3 Points	14/42	33
Free Throws	9/13	69

Queens (NC)	M/A	%
Points in the Paint	28 (14/29)	48
Fast Break Points	7 (5/5)	100
Second Chance Points	14 (6/12)	50
Effective FG%	47	

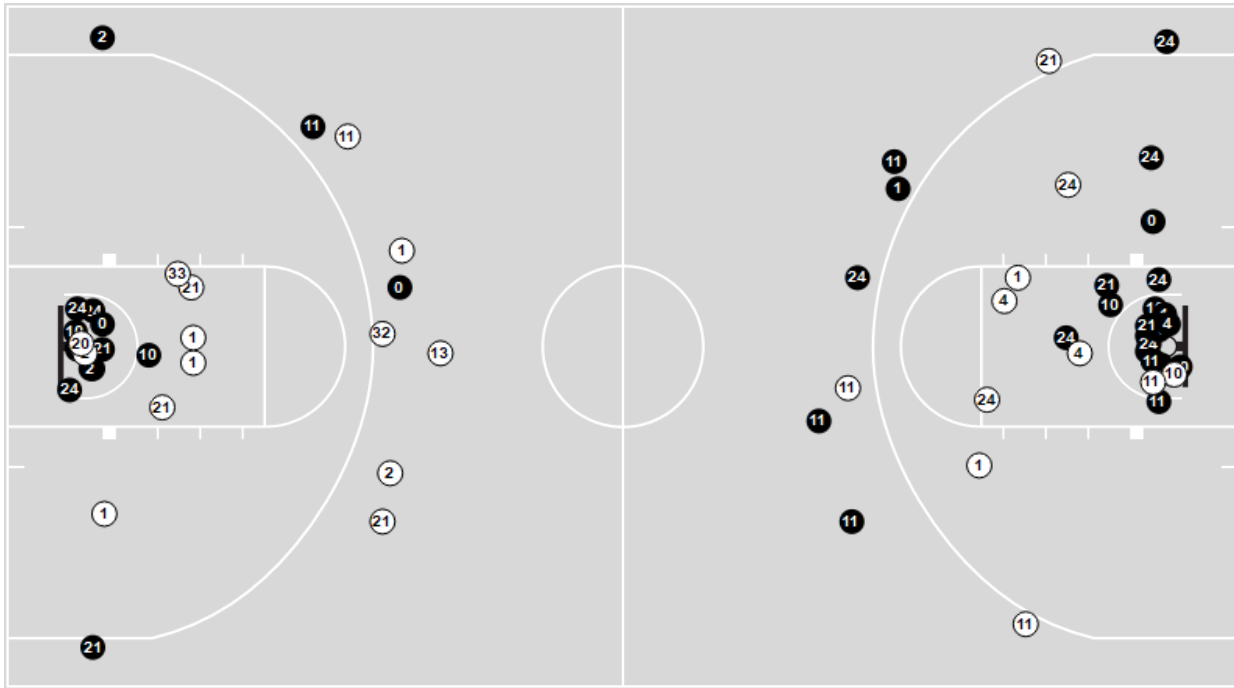


Officials: Jamie Luckie, AJ Desai, Tony Henderson

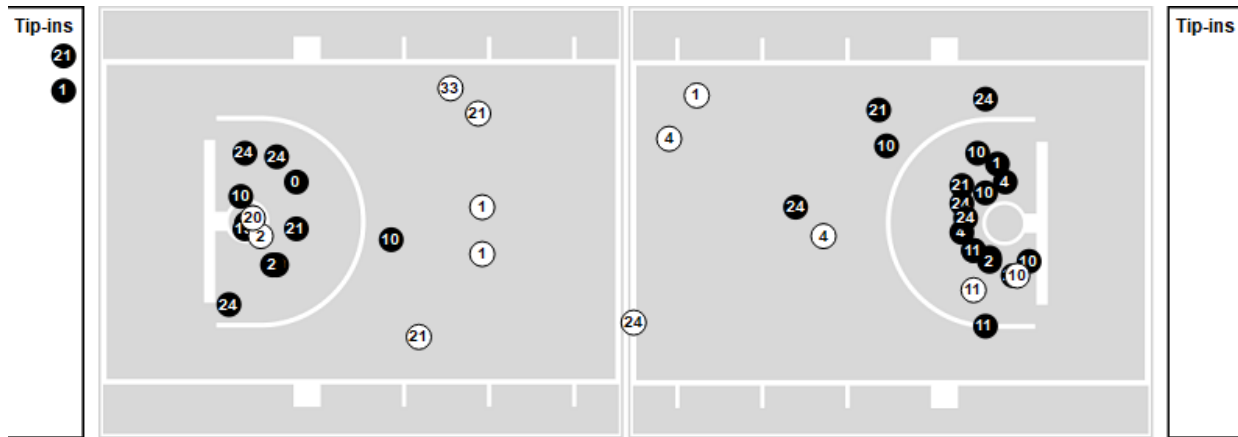
Players => All ; FG Types => All ; Results => All ;

**Clemson**

**All Field Goals**



**Shots in the Paint**



● Made    ○ Missed    N - Player Number

Clemson	M/A	%
Field Goals	43/68	63
2 Points	33/49	67
3 Points	10/19	53
Free Throws	13/17	76

Clemson	M/A	%
Points in the Paint	62 (31/44)	70
Fast Break Points	13 (7/8)	88
Second Chance Points	13 (6/6)	100
Effective FG%	71	