



# 2023 MATCH NOTES

# CLEMSON WOMEN'S SOCCER

2 ACC CHAMPIONSHIPS • 5 NCAA QUARTERFINALS • 8 SWEET SIXTEENS • 24 NCAA TOURNAMENTS • 18 ALL-AMERICANS

## Game 23: No. 7 Clemson Tigers (16-3-3) vs. Columbia Lions (11-4-3)

November 17, 2023 • Historic Riggs Field • Clemson, S.C. • NCAA Tournament Second Round

### 2023 Schedule

#### Fall 2023 Season

| Date  | Day    | Network | (Rk.) Opponent        | Result/Time (Est.) |
|-------|--------|---------|-----------------------|--------------------|
| 8/9   | Wed.   | ---     | Ole Miss (exhibition) | -                  |
| 8/14  | Sun.   | ---     | UNCW (exhibition)     | -                  |
| 8/17  | Thurs. | ACCNX   | #12 South Carolina    | T, 0-0             |
| 8/20  | Sun.   | ACCNX   | Gardner Webb          | W, 9-0             |
| 8/24  | Thurs. | ESPN+   | at Utah Valley        | W, 2-0             |
| 8/27  | Sun.   | Pac12   | at Utah               | W, 1-0             |
| 8/31  | Thurs. | ACCNX   | Furman                | W, 4-1             |
| 9/3   | Sun.   | ACCNX   | Western Carolina      | W, 5-0             |
| 9/7   | Thurs. | ACCNX   | # 7 Arkansas          | W, 1-0             |
| 9/10  | Sun.   | ACCN    | Georgia               | T, 1-1             |
| 9/15  | Fri.   | ACCNX   | * #4 Florida State    | L, 4-2             |
| 9/21  | Thurs. | ACCN    | * at Miami            | W, 5-0             |
| 9/24  | Sun.   | ACCN    | * at Boston College   | W, 2-0             |
| 9/30  | Sat.   | ACCNX   | * Syracuse            | W, 5-1             |
| 10/5  | Thurs. | ACCNX   | * Virginia            | T, 1-1             |
| 10/8  | Sun.   | ACCNX   | * at Virginia Tech    | W, 1-0             |
| 10/13 | Fri.   | ACCNX   | * at #23 Duke         | W, 1-0             |
| 10/19 | Thurs. | ACCNX   | * Louisville          | W, 3-0             |
| 10/22 | Sun.   | ACCN    | * #18 Pittsburgh      | W, 1-0             |
| 10/26 | Thurs. | ACCN    | * at Notre Dame       | L, 0-2             |
| 10/29 | Sun.   | ACCN    | ^ Wake Forest         | W, 1-0             |
| 11/2  | Thurs. | ACCN    | ^ vs Notre Dame       | W, 3-2             |
| 11/5  | Sun.   | ESPNU   | ^ vs Florida State    | L, 1-2             |
| 11/9  | Fri.   | ACCNX   | % Radford             | W, 2-0             |
| 11/17 | Fri.   | ACCNX   | % Columbia            | 5:30 p.m.          |

\* - ACC Conference Match

^ - ACC Championships / % NCAA Tournament

### #7 Clemson

|             |        |
|-------------|--------|
| Record:     | 16-3-3 |
| Home:       | 9-1-2  |
| Away:       | 6-1-1  |
| Neutral:    | 1-1-0  |
| Non-Conf.:  | 9-0-2  |
| ACC Record: | 7-2-1  |

2022 Record: 8-5-5 (4-3-3)

Head Coach: Eddie Radwanski // 13th season  
Assoc. HC: Jeff Robbins // 13th season  
Asst. Coach: Siri Mullinix // 13th season  
Asst. Coach: Allison Wetherington // 1st season

### The Series

|              |    |
|--------------|----|
| CU Record    | -- |
| Last Meeting | -- |
| Trend        | -- |
| Last match:  | -- |

\* This match marks the first time these two teams have faced-off against each other.

### Columbia

|             |        |
|-------------|--------|
| Record:     | 11-4-3 |
| Home:       | 6-2-0  |
| Away:       | 3-1-3  |
| Neutral:    | 2-1-0  |
| Conference: | 3-2-2  |

2022 Record: 7-5-3 (3-3-1)

Head Coach: Tracy Bartholomew // 9th season  
Assoc. HC: Amphone Keovongmansar // 9th season  
Asst. Coach: Jack Abelson // 2nd season  
Asst. Coach: Celia Balf // 1st season

### Need to Know

#### Clemson Tigers Earn One of Four No. 1 Seeds in NCAA Tournament Bracket

• For the first time in program history, the No. 7 Clemson Tigers secured a No. 1 seed in the bracket for the NCAA Tournament as the Tigers earned their highest seeding since the 2000 team earned the No. 3 overall seed in the previous bracket format, which included 48 teams. The Tigers secure one of four top seeds as Florida State, BYU and UCLA all earned No.1 seeds in their respective portions of the bracket.

#### Tigers Shutout Radford in First Round of NCAA Tournament

• In the first round of the NCAA Tournament, the Clemson Tigers shutout Radford, 2-0 at Historic Riggs Field to advance to the second round of the tournament. Upperclassmen, Makenna Morris and Caroline Conti netted the two goals of the night while sophomore goalkeeper Addy Holgorsen started her first-career match in goal for the Tigers. Clemson outshot Radford 26-0.

#### 2023 Regular Season Recap

• The Clemson Tigers wrapped up the regular season an impressive 13-2-3 overall record as she finished third in the ACC standings. Senior Makenna Morris has led the team in points and goals all season long as she has 22 points and eight goals on the year. Goalkeeper Halle Mackiewicz set a new single-season record for the program as she secured 13 total shutouts on the year. Mackiewicz became the first Clemson keeper to be named the ACC Goalkeeper of the Year as she is the second GK to earn the honor from the ACC.

#### Clemson Tigers Set To Play Host to Columbia in Second Round of NCAA Tournament

• After securing their place in the next round of the tournament, the No. 7 Tigers will play host to Columbia at Historic Riggs Field on Friday, November 17 at 5:30 p.m. as the inch closer to the College Cup. The Tigers will host the second round match between Iowa and Georgia at 2 p.m. before their match against the Lions.

### PROGRAM FACTS

|                          |   |
|--------------------------|---|
| Clemson University       |   |
| Nickname                 | Tigers  |
| Location                 | Clemson, S.C.   |
| Colors                   | Tiger Orange & Regalia                                |
| Founded                  | 1889  |
| Enrollment               | 25,822  |
| President                | Dr. James P. Clements (Maryland-Baltimore County '85) |
| Director of Athletics    | Graham Neff (Georgia Tech '06)                        |
| Facility/Year (Capacity) | Historic Riggs Field/1915 (6,500)                     |
| All-Time Stats           |   |
| Overall Record           | 342-215-55 30th Season                                |
| ACC Record               | 117-133-25 30th Season                                |
| Goals                    | 1,233   |

#### NCAA TOURNAMENT APPEARANCES

24 Total: 1994-2007, 2014-2023

#### SWEET SIXTEEN APPEARANCES

8 Total: 1997-2001, 2006, 2016, & 2020

#### ELITE EIGHT APPEARANCES

5 Total: 1997, 1999, 2000, 2006, & 2020

### ACC CHAMP. BRACKET

First Round | Sunday, Oct. 29

#3 Clemson 1, #6 Wake Forest 0

#5 Pitt 2, #4 North Carolina 1 (OT)

Semifinals | Thursday, Nov. 2 – WakeMed Soccer Park (Cary, N.C.)

#3 Clemson 3, #2 Notre Dame, 2

#5 Pitt 0, #1 Florida State 2

Final | Sunday, Nov. 5 – WakeMed Soccer Park (Cary, N.C.)

#1 Florida State 2, #3 Clemson 1

### 2023 SEASON STAT LEADERS

#### Season Stat Leaders

|           |                             |
|-----------|-----------------------------|
| GOALS     | 9 - Makenna Morris          |
| ASSISTS   | 8 - Jenna Tobia, Dani Davis |
| POINTS    | 24 - Makenna Morris         |
| SHOTS     | 50 - Caroline Conti         |
| SAVES     | 51 - Halle Mackiewicz       |
| SHOT PER. | .600 - Mackenzie Duff       |

#### Single Game Leaders

|         |   |
|---------|---|
| GOALS   | 3 - Sami Meredith (vs Gardner-Webb 8/20/23)     |
| ASSISTS | 3 - Megan Bornkamp, Jenna Tobia, Makenna Morris |
| POINTS  | 6 - Sami Meredith (vs Gardner-Webb 8/20/23)     |
| SHOTS   | 10 - Renee Lyles (vs Gardner-Webb 8/20/23)      |
| SAVES   | 5 - Halle Mackiewicz (vs Pittsburgh 10/22/23)   |

#### Individual Single-Season Records

|         |                 |     |
|---------|-----------------|-----|
| GOALS   | Carmie Landeen  | 24  |
| ASSISTS | 2 players tied  | 13  |
| POINTS  | Carmie Landeen  | 57  |
| SAVES   | Ashley Phillips | 119 |

### TIGERS IN THE PROS

#### Active NWSL/Professional Players

|                    |                        |
|--------------------|------------------------|
| Mariana Speckmaier | Washington Spirit      |
| Sam Staab          | Washington Spirit      |
| Kailen Sheridan    | San Diego Wave         |
| Sandy MacIver      | Manchester City        |
| Tabitha Nyberg     | IK Viljan Strågnås     |
| Hensley Hancuff    | North Carolina Courage |
| Renee Guion        | Fortuna Hjørring       |
| Maliah Morris      | Orlando Pride          |
| Caitlin Smith      | Reading FC             |

#### Active National Players

|                    |               |
|--------------------|---------------|
| Kailen Sheridan    | Canada WNT    |
| Sandy MacIver      | England WNT   |
| Mariana Speckmaier | Venezuela WNT |

# QUICK FACTS

## MEDIA SERVICES

### CLEMSON ATHLETIC COMMUNICATIONS

|                                   |                         |
|-----------------------------------|-------------------------|
| <b>Women's Soccer Contact</b>     | <b>Autumn Froitland</b> |
| Email                             | afroitl@clemson.edu     |
| Phone                             | 623-628-706             |
| <b>Women's Soccer Secondary</b>   | <b>Chandler Simpson</b> |
| Email                             | mcsimp2@g.clemson.edu   |
| <b>Assoc. AD - Communications</b> | <b>Jeff Kallin</b>      |
| Email                             | kallin@clemson.edu      |

### CLEMSON ATHLETICS

|                            |                                 |
|----------------------------|---------------------------------|
| <b>Website</b>             | ClemsonTigers.com               |
| <b>Ticket Office Phone</b> | 1-800-CLEMSON                   |
| <b>Social Media</b>        | @ClemsonWSoccer (Twitter)       |
|                            | @ClemsonWSoccer (Instagram)     |
|                            | @ClemsonWSoccer (Tik Tok)       |
|                            | @ClemsonTigers (Main Athletics) |

### ACC MEDIA RELATIONS

**Brandon McGinnis** is the women's soccer athletic communications contact at the ACC office. He can be reached at 336-369-4642(office) or via email at bmcginnis@theacc.org.

### CREDENTIALS

Members of the working press can request media credentials on a season, or match-by-match, basis. All requests must be sent to **Chandler Simpson** via email. Season credentials may be requested at any point throughout the season. Those interested in a single-match credential must communicate the request at least one day prior to the match.

### INTERVIEW

Interviews are available at any point throughout the week with select players and **Head Coach Eddie Radwanski**. Contact **Autumn Froitland** via phone or email to coordinate all interview requests. Players are available at the discretion of the women's soccer staff upon request.

## LAST TIME THE TIGERS

| EVENT   | DATE     | OPP. (Results, Score)                         |
|---|----------|---|
| Scored <b>0</b> goals                         | 10/26/23 | vs. Notre Dame (L, 0-2)                       |
| Scored <b>1</b> goal or more                  | 11/06/23 | vs. Radford (W, 2-0)                          |
| Scored <b>2</b> goals or more                 | 11/06/23 | vs. Radford (W, 2-0)                          |
| Scored <b>3</b> goals or more                 | 11/02/23 | vs. Notre Dame (W, 3-2)                       |
| Scored <b>4</b> goals or more                 | 09/30/23 | vs. Syracuse (W, 5-1)                         |
| Scored <b>5</b> goals or more                 | 09/30/23 | vs. Syracuse (W, 5-1)                         |
| Scored <b>6</b> goals or more                 | 08/20/23 | vs. Gardner-Webb (W, 9-0)                     |
| Scored <b>7</b> goals or more                 | 08/20/23 | vs. Gardner-Webb (W, 9-0)                     |
| Scored <b>8</b> goals or more                 | 08/20/23 | vs. Gardner-Webb (W, 9-0)                     |
| Scored <b>9</b> goals or more                 | 08/20/23 | vs. Gardner-Webb (W, 9-0)                     |
| Scored <b>10</b> goals or more                | 09/22/13 | vs. Alabama A&M (W, 14-0)                     |
| Allowed <b>0</b> goals                        | 11/06/23 | vs. Radford (W, 2-0)                          |
| Allowed <b>1</b> goal                         | 11/05/23 | vs. Florida State (L, 1-2)                    |
| Allowed <b>2</b> goals                        | 11/05/23 | vs. Florida State (L, 1-2)                    |
| Allowed <b>3</b> goals                        | 09/15/23 | vs. Florida State (L, 4-2)                    |
| Allowed <b>4</b> goals                        | 09/15/23 | vs. Florida State (L, 4-2)                    |
| Allowed <b>5</b> goals                        | 11/22/19 | vs. UCLA (L, 0-5)                             |
| Scored a goal <b>10:00</b> or earlier         | 09/21/23 | vs. Miami (W, 5-0)                            |
| Scored a goal <b>80:00</b> or later           | 08/21/22 | vs. Campbell (W, 5-1)                         |
| Margin is <b>1</b> goal                       | 09/08/22 | vs. West Virginia (W, 1-0)                    |
| Margin is <b>2</b> goals                      | 09/15/22 | vs. Notre Dame (W, 2-0)                       |
| Margin is <b>3+</b> goals                     | 09/22/22 | vs. Wake Forest (L, 4-1)                      |
| <b>3 or more</b> Clemson players scored       | 09/30/23 | vs. Syracuse (W, 5-1), 5 players              |
| Attempted <b>0-9</b> shots or more            | 09/15/22 | vs. Notre Dame (W, 2-0) 14 shots              |
| Attempted <b>10-19</b> shots or more          | 10/08/23 | vs. Virginia Tech (W, 1-0) 17shots            |
| Attempted <b>20-29</b> shots or more          | 10/05/23 | vs. Virginia (T, 1-1) 20 shots                |
| Attempted <b>30+</b> shots                    | 08/20/23 | vs. Gardner-Webb (W, 9-0)- 40 shots           |
| Allowed <b>0-9</b> shots                      | 09/22/22 | vs. Wake Forest (L, 4-1) 10 shots             |
| Allowed <b>10-19</b> shots                    | 09/22/22 | vs. Wake Forest (L, 4-1) 10 shots             |
| Allowed <b>20-29</b> shots                    | 08/28/22 | vs. Alabama (L, 3-0) - 20 shots               |
| Allowed <b>30+</b> shots                      | 09/27/12 | vs. Duke (L, 0-3) - 31 shots                  |
| Won in OT/2OT                                 | 04/3/21  | vs. Alabama (W, 1-0 [OT])                     |
| Lost in OT/2OT                                | 10/10/21 | vs. Notre Dame (L, 1-2 [2OT])                 |
| Tied in OT/2OT                                | 05/5/21  | VS. #3 UCLA (T, 1-1 [CU advances 6-5 on PKs]) |
| Completed in a <b>PK Shootout</b>             | 05/5/21  | VS. #3 UCLA (T, 1-1 [CU advances 6-5 on PKs]) |
| Won a <b>PK shootout</b>                      | 05/5/21  | VS. #3 UCLA (T, 1-1 [CU advances 6-5 on PKs]) |
| Played <b>13+</b> players                     | 09/22/22 | vs. Wake Forest (L, 4-1) 14 players           |
| Played <b>16+</b> players                     | 09/08/22 | vs. West Virginia (W, 1-0)- 16 players        |
| Played <b>18+</b> players                     | 09/04/22 | vs. App State (W, 3-0)- 22 players            |
| Beat a United Soccer Coach <b>No. 1</b> team  | 09/13/00 | vs. North Carolina (W, 2-1)                   |
| Beat a United Soccer Coach <b>Top 5</b> team  | 09/20/18 | vs. Virginia (W, 1-0) - #4                    |
| Beat a United Soccer Coach <b>Top 10</b> team | 09/07/23 | vs. Arkansas (W, 1-0) #7                      |
| Beat a United Soccer Coach <b>Top 25</b> team | 10/22/23 | vs. Pitt (W, 1-0) - #18                       |

## PREVIOUS GAME RECAP

**CLEMSON, S.C.** – Behind two second-half goals, No. 7 Clemson women's soccer downed Radford, 2-0, to advance to the second round of the NCAA Tournament. Seniors Makenna Morris and Caroline Conti netted both goals for the Tigers, who earned their 14th shutout of the season in front of 1,755 fans at Historic Riggs Field.

"We wanted to come out and dominate the game, Radford came in with a defensive plan and they were trying to keep the game close. The hardest thing to do in a game is score and then it's even harder when they put numbers back there," Head Coach Eddie Radwanski said. "We got two goals and the name of the game is to win so we got the win, we got the shutout and played well."

The Tigers came out strong in the first half with the defensive line allowing zero scoring opportunities for the Highlanders as Radford wrapped up the first 45 with no shots. Clemson tabbed 11 total shots, with five on target. The Tigers were also awarded six corner-kicks in comparison to Highlanders two corners.

In the second half, Morris helped the Tigers secure the 1-0 lead as she was able to knock one in at the '55 mark. Dani Davis found possession of the ball and was able to pass it to Conti, who was able to find Morris in scoring position. Conti crossed the ball to Morris who was able to sneak it past the Radford keeper.

In the '76, Conti showed her skills on the pitch as she was able to use her speed to maneuver past four Radford players and knock one into the net. The goal marked Conti's seventh of the season.

Sophomore goalkeeper Addy Holgorsen recorded her first-career start for the Tigers.

"There is a little bit of nervousness that comes with it but my teammates were all there for me and we stepped up and we got the donut which is all that matters," Holgorsen said. "We are moving on, next round."

Up next, the Tigers will face the winner of Sunday's Columbia/Rutgers game as the Tigers advance to the second round and will host their next opponent at Historic Riggs Field next weekend.

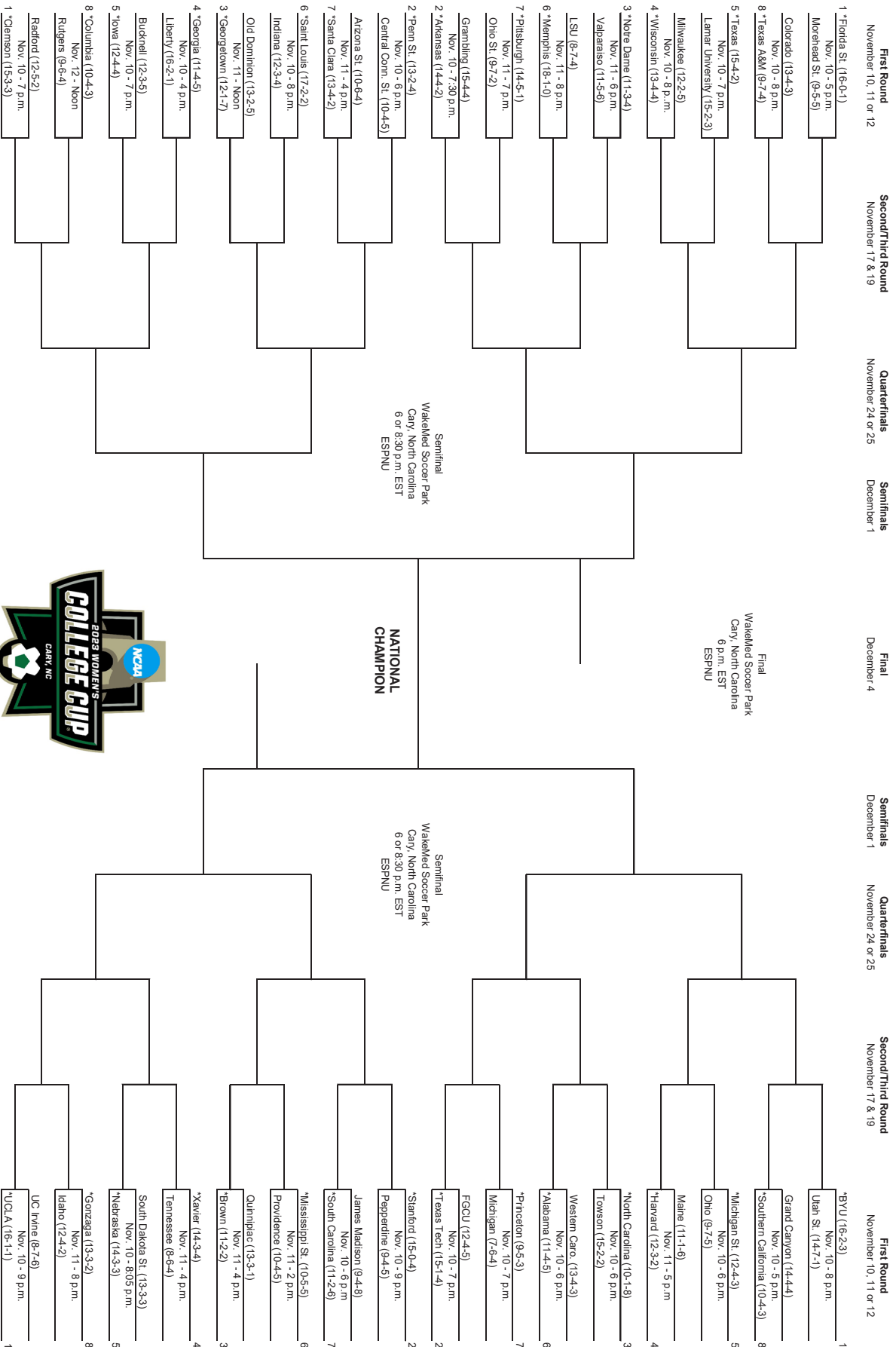
## ACC PRESEASON COACHES POLL

| Team               | Points (First-Place Votes) |
|--------------------|----------------------------|
| 1. North Carolina  | 166 Points (10)            |
| 2. Florida State   | 146 Points (2)             |
| 3. Virginia        | 139 Points (1)             |
| 4. Notre Dame      | 134 Points                 |
| 5. Duke            | 126 Points (1)             |
| <b>6. Clemson</b>  | <b>104 Points</b>          |
| 7. Pitt            | 103 Points                 |
| 8. Wake Forest     | 87 Points                  |
| 9. Virginia Tech   | 81 Points                  |
| 10. NC State       | 62 Points                  |
| 11. Louisville     | 47 Points                  |
| 12. Syracuse       | 35 Points                  |
| 13. Miami          | 24 Points                  |
| 14. Boston College | 20 Points                  |

## TIGERS IN THE POLLS

| Week      | USC | TDS | RPI |
|-----------|-----|-----|-----|
| Preseason | #25 | -   | -   |
| Week 1    | #19 | -   | -   |
| Week 2    | #11 | -   | -   |
| Week 3    | #9  | -   | -   |
| Week 4    | #8  | #14 | -   |
| Week 5    | #8  | #16 | -   |
| Week 6    | #8  | #9  | #13 |
| Week 7    | #9  | #8  | #15 |
| Week 8    | #7  | #12 | #13 |
| Week 9    | #8  | -   | -   |
| Week 10   | #8  | #6  | -   |
| Week 11   | #7  | -   | -   |

# 2023 DIVISION I WOMEN'S SOCCER CHAMPIONSHIP



\*Host institution for preliminary/round games  
All game times are Eastern standard time.  
Order of semifinal games determined after quarterfinal round games are completed.  
Second semifinal game will begin 45 minutes after conclusion of first game.

© 2023 National Collegiate Athletic Association. No commercial use without the NCAA's written permission.  
The NCAA opposes all forms of sports wagering.

# LAST MATCH STARTING XI

2



## MAKENNA MORRIS

Sr. • D • 5-5 • Germantown, Md. • St. John's College HS

|        | GMS | STARTS | GOALS | ASSISTS | POINTS | SOG |
|--------|-----|--------|-------|---------|--------|-----|
| 2023   | 22  | 22     | 9     | 6       | 24     | 24  |
| Career | 76  | 73     | 18    | 20      | 56     | 58  |

Season Highs: --

4



## HARPER WHITE

5th. • D • 5-8 • Franklin, Tenn. • Franklin HS

|        | GMS | STARTS | GOALS | ASSISTS | POINTS | SOG |
|--------|-----|--------|-------|---------|--------|-----|
| 2023   | 20  | 20     | -     | 2       | 2      | -   |
| Career | 96  | 75     | 3     | 9       | 15     | 12  |

Season Highs: --

7



## DANI DAVIS

Fr. • MF • 5-9 • Port Washington, N.Y. •

|        | GMS | STARTS | GOALS | ASSISTS | POINTS | SOG |
|--------|-----|--------|-------|---------|--------|-----|
| 2023   | 22  | 22     | 1     | 8       | 10     | 8   |
| Career | 22  | 22     | 1     | 8       | 10     | 8   |

Season Highs: --

8



## JENNA TOBIA

Fr. • F • 5-5 • Warren, N.J. •

|        | GMS | STARTS | GOALS | ASSISTS | POINTS | SOG |
|--------|-----|--------|-------|---------|--------|-----|
| 2023   | 22  | 20     | 4     | 8       | 16     | 14  |
| Career | 22  | 20     | 4     | 8       | 16     | 14  |

Season Highs: --

9



## MACKENZIE DUFF

Jr. • D • 5-11 • St. Louis, Mo. • Nerinx Hall

|        | GMS | STARTS | GOALS | ASSISTS | POINTS | SOG |
|--------|-----|--------|-------|---------|--------|-----|
| 2023   | 22  | 19     | 6     | 1       | 13     | 6   |
| Career | 39  | 21     | 6     | 1       | 13     | 6   |

Season Highs: --

10



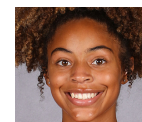
## RENEE LYLES (LY-els)

Jr. • F • 5-5 • Atlanta, Ga. • St. Pius X Catholic HS

|        | GMS | STARTS | GOALS | ASSISTS | POINTS | SOG |
|--------|-----|--------|-------|---------|--------|-----|
| 2023   | 22  | 12     | 5     | 4       | 13     | 16  |
| Career | 58  | 47     | 16    | 12      | 44     | 54  |

Season Highs: --

11



## TATUM SHORT

Fr. • Forward • 5-5 • Las Vegas, Nev. •

|        | GMS | STARTS | GOALS | ASSISTS | POINTS | SOG |
|--------|-----|--------|-------|---------|--------|-----|
| 2023   | 22  | 21     | 3     | 4       | 10     | 15  |
| Career | 22  | 21     | 3     | 4       | 10     | 15  |

Season Highs: --

15



## HAL HERSHFELT

Gr. • MF • 5-8 • Atlanta, Ga. •

|        | GMS | STARTS | GOALS | ASSISTS | POINTS | SOG |
|--------|-----|--------|-------|---------|--------|-----|
| 2023   | 20  | 19     | 1     | 4       | 6      | 7   |
| Career | 95  | 93     | 16    | 12      | 46     | 61  |

Season Highs: --

23



## CAROLINE CONTI

Gr. • F • 5-6 • Greenville, S.C. •

|        | GMS | STARTS | GOALS | ASSISTS | POINTS | SOG |
|--------|-----|--------|-------|---------|--------|-----|
| 2023   | 20  | 18     | 7     | 4       | 18     | 23  |
| Career | 96  | 92     | 26    | 20      | 72     | 91  |

Season Highs: --

24



## MEGAN BORNKAMP

Sr. • MF • 5-9 • Mooresville, N.C. •

|        | GMS | STARTS | GOALS | ASSISTS | POINTS | SOG |
|--------|-----|--------|-------|---------|--------|-----|
| 2023   | 21  | 20     | 3     | 6       | 12     | 18  |
| Career | 77  | 76     | 22    | 19      | 63     | 59  |

Season Highs: --

26



## ADDY HOLGERSON

So. • GK • 5-7 • Charlotte, N.C. • Providence Day

|        | GMS | STARTS | SAVES | GA | SAVE % |
|--------|-----|--------|-------|----|--------|
| 2023   | 3   | 1      | -     | 1  | .000   |
| Career | 3   | 1      | -     | 1  | .000   |

Season Highs: --

## COACHES



## EDDIE RADWANSKI (Rad-wan-skee)

Head Coach  
13th season  
2016 ACC Coach of the Year  
Clemson Record: 141-83-32  
Overall Record: 280-148-45



## JEFF ROBBINS

Associate Head Coach  
13th season



## SIRI MULLINIX

Assistant/Goalkeeper Coach  
13th season



## ALLISON WETHERINGTON

Assistant Coach  
1st season

# LAST MATCH RESERVES

1



## HALLE MACKIEWICZ (HAL-ee MACK-uh-witz)

Sr. • GK • 5-10 • Broomfield, Colo. • Legacy HS

|        | GMS | STARTS | SAVES | GA | SAVE % | SHUTOOTS | PTS |
|--------|-----|--------|-------|----|--------|----------|-----|
| 2023   | 21  | 21     | 51    | 13 | .797   | 13       | -   |
| Career | 51  | 48     | 135   | 43 | .758   | 23       | 2   |

Season Highs: --

3



## LAYNE ST. GEORGE (LANE)

Jr. • D • 5-5 • Seattle, Wash. • Holy Names Academy

|        | GMS | STARTS | GOALS | ASSISTS | POINTS | SOG |
|--------|-----|--------|-------|---------|--------|-----|
| 2023   | 12  | 4      | -     | -       | -      | 1   |
| Career | 29  | 13     | -     | 2       | 2      | 4   |

Season Highs: --

5



## EMILY BROUGH (BRUFF)

So. • MF • 5-8 • Liverpool, England •

|        | GMS | STARTS | GOALS | ASSISTS | POINTS | SOG |
|--------|-----|--------|-------|---------|--------|-----|
| 2023   | 22  | 6      | 1     | 3       | 5      | 13  |
| Career | 38  | 12     | 4     | 3       | 11     | 16  |

Season Highs: --

6



## ELEANOR HAYS

Fr.. • D • 5-9 • Lewisville, Texas •

|        | GMS | STARTS | GOALS | ASSISTS | POINTS | SOG |
|--------|-----|--------|-------|---------|--------|-----|
| 2023   | 1   | -      | -     | -       | -      | -   |
| Career | 1   | -      | -     | -       | -      | -   |

Season Highs: --

12



## SYDNEY MINARIK (Min-NAIR-ik)

Jr. • F • 5-4 • Huntersville, N.C. •

|        | GMS | STARTS | GOALS | ASSISTS | POINTS | SOG |
|--------|-----|--------|-------|---------|--------|-----|
| 2023   | 20  | 3      | -     | 1       | 1      | 4   |
| Career | 53  | 17     | 5     | 3       | 13     | 18  |

Season Highs: --

13



## EMMA WENNAR (WHEN-er)

So. • F • 5-4 • Milton, Vt. • Milton HS

|        | GMS | STARTS | GOALS | ASSISTS | POINTS | SOG |
|--------|-----|--------|-------|---------|--------|-----|
| 2023   | 22  | 2      | 3     | 2       | 8      | 13  |
| Career | 37  | 2      | 3     | 3       | 9      | 20  |

Season Highs: --

16



## ELLA HAUSER (HOO-zer)

Jr. • MF • 5-6 • Cornelius, N.C. • Hough HS

|        | GMS | STARTS | GOALS | ASSISTS | POINTS | SOG |
|--------|-----|--------|-------|---------|--------|-----|
| 2023   | 8   | -      | -     | -       | -      | -   |
| Career | 23  | 2      | -     | -       | -      | 1   |

Season Highs: --

17



## EMMA LERNER

Jr. • MF • 5-6 • Mentor, Ohio •

|        | GMS | STARTS | GOALS | ASSISTS | POINTS | SOG |
|--------|-----|--------|-------|---------|--------|-----|
| Career | 7   | -      | -     | -       | -      | 2   |

Season Highs: --

18



## MARIA MANOUSOS (Ma-NEW-sos)

So. • F • 5-6 • Weddington, N.C. •

|        | GMS | STARTS | GOALS | ASSISTS | POINTS | SOG |
|--------|-----|--------|-------|---------|--------|-----|
| 2023   | 19  | -      | 2     | -       | 4      | 2   |
| Career | 35  | 4      | 4     | 2       | 10     | 11  |

Season Highs: --

22



## GABBY GAMBINO (Gam-BEE-no)

So. • MF • 5-5 • Lewiston, N.Y. • St. Mary's

|        | GMS | STARTS | GOALS | ASSISTS | POINTS | SOG |
|--------|-----|--------|-------|---------|--------|-----|
| 2023   | 7   | 2      | -     | 2       | 2      | 1   |
| Career | 14  | 2      | -     | 2       | 2      | 4   |

Season Highs: --

25



## DANI LYNCH

Fr.. • D • 5-7 • Los Angeles, Calif. •

|        | GMS | STARTS | GOALS | ASSISTS | POINTS | SOG |
|--------|-----|--------|-------|---------|--------|-----|
| 2023   | 5   | -      | -     | 1       | 1      | -   |
| Career | 5   | -      | -     | 1       | 1      | -   |

Season Highs: --

29



## SAMI MEREDITH

Gr. • F • 6-0 • Charleston, S.C. •

|        | GMS | STARTS | GOALS | ASSISTS | POINTS | SOG |
|--------|-----|--------|-------|---------|--------|-----|
| 2023   | 22  | 10     | 6     | 2       | 14     | 17  |
| Career | 77  | 30     | 13    | 5       | 31     | 35  |

Season Highs: --

34



## ALLY LYNCH

Jr. • GK • 5-8 • Los Angeles, Calif. • Harvard-Westlake HS

|        | GMS | STARTS | SAVES | GA | SAVE % | SHUTOOTS | PTS |
|--------|-----|--------|-------|----|--------|----------|-----|
| 2022   | 3   | -      | -     | -  | -      | -        | -   |
| Career | 5   | -      | 1     | -  | 1.000  | -        | -   |

Season Highs: --

# 2023 TV ROSTER



**#1 HALLE MACKIEWICZ**  
GK • 5-10 • Sr.  
*HAL-ee MACK-uh-witz*



**#2 MAKENNA MORRIS**  
D • 5-5 • Sr.



**#3 LAYNE ST. GEORGE**  
D • 5-5 • Jr.



**#4 HARPER WHITE**  
D • 5-8 • 5th



**#5 EMILY BROUGH**  
MF • 5-8 • Sr.



**#6 ELEANOR HAYS**  
D • 5-9 • Fr.



**#7 DANI DAVIS**  
MF • 5-9 • Fr.



**#8 JENNA TOBIA**  
F • 5-5 • Fr.  
*Jenna TOE-be-A*



**#9 MACKENZIE DUFF**  
D • 5-11 • Jr.



**#10 RENEE LYLES**  
F • 5-5 • Jr.



**#11 TATUM SHORT**  
F • 5-5 • Fr.



**#12 SYDNEY MINARIK**  
F • 5-4 • Jr.  
*Sydney Min-NAIR-ik*



**#13 EMMA WENNAR**  
F • 5-4 • So.  
*Emma WHEN-er*



**#15 HAL HERSHFELT**  
MF • 5-8 • Gr.



**#16 ELLA HAUSER**  
MF • 5-6 • Jr.  
*Ella HOO-zer*



**#17 EMMA LERNER**  
MF • 5-6 • R-So.



**#18 MARIA MANOUSOS**  
F • 5-6 • So.  
*Maria Ma-NEW-sos*



**#22 GABBY GAMBINO**  
MF • 5-5 • So.  
*Gabby Gam-BEE-no*



**#23 CAROLINE CONTI**  
F • 5-6 • Gr.



**#24 MEGAN BORNKAMP**  
D • 5-9 • Sr.



**#25 DANI LYNCH**  
D • 5-7 • Fr.



**#26 ADDY HOLGORSEN**  
GK • 5-7 • So.



**#29 SAMI MEREDITH**  
F • 6-0 • Gr.



**#34 ALLY LYNCH**  
GK • 5-8 • Jr.



**EDDIE RADWANSKI**  
Head Coach • 13th Season  
*Rad-WAN-skee*



**JEFF ROBBINS**  
Associate Head Coach • 13th Season



**SIRI MULLINIX**  
Assistant Coach • 13th Season



**ALLISON WETHERINGTON**  
Assistant Coach • 1st Season



**MILES MAYNARD**  
Director of Operations • 1st Season

# 2023 SEASON PREVIEW



**CLEMSON, S.C.** – As the 2023 roster blends together a group of nationally regarded returners, highly skilled reserves and some talented new faces, a new era will begin for Clemson Women’s Soccer. Coming off a successful preseason run, these Tigers are ready to prove themselves at the national level.

“Our group is very much looking forward to the 2023 fall season. We have been working for this moment ever since the start of the spring semester of last year,” Head Coach Eddie Radwanski said. “Our group is dialed in, intense and looking forward to getting after it and competing in the ACC and NCAA. I think we have a little bit of something to prove this year, a little bit of a chip on our shoulder and I think we just need to continue our theme of ‘were just going to worry about us, were going to be the best version of us we can be and we will trust that our results will carry themselves.’”

Ranked No. 25 in the nation, the Tigers bring back a unique force of returners with Hal Hershfelt, Megan Bornkamp and Caroline Conti leading this team in the orange and purple. Both Bornkamp and Hershfelt were named to the Preseason All-ACC Team and were named players to watch by the United Soccer Coaches. Conti led the team in points in the 2022 season as she tallied 13 total points with five assists and four goals on the year.

“I’m excited to be back playing with the team I love and to play another season at Riggs. The atmosphere we have at home games is unreal,” Hershfelt said. “We have a lot of goals this season, and it being my last year it really is all or nothing. We have to do all we can to leave our mark.”

The Tigers wrapped up the 2022 season with an 8-5-5 overall record and a 4-3-3 record in conference play. For the ninth-straight season, the Tigers continued their run in the postseason as they earned a No. 5 seed and a bid to the NCAA tournament where they took on Vanderbilt in the first round to end the season.

Wearing the gloves for the Tigers this season will be Halle Mackiewicz, who was a key component for this team in the 2022 campaign. Mackiewicz started all 18 matches last season and ended the campaign with 59 saves and .759 save percentage.

Also returning to the roster for Clemson is senior Makenna Morris and junior Renee Lyles. Both players were in the top three for total points at the end of the 2022 season as they followed Conti with 11 (Lyles) and 10 (Morris) points.

Putting on the Tiger threads for the first time this season is Dani Davis, Jenna Tobia, Tatum Short, Eleanor Hays and Dani Lynch. Tobia and Short impressed all with their preseason performances and will look to continue that success in their freshman campaigns.

The coaching staff of 13 seasons is made up of Head Coach, Eddie Radwanski who will look to lead this team to the top. Radwanski is supported by Associate Head Coach Jeff Robbins and Assistant Coach Siri Mullinix. The trio also added Allison Wetherington to their staff as she takes on the role of an assistant coach and will add a professional perspective with her experience in the NWSL as a guiding light.



## 2023-24 Clemson Women's Soccer Combined Statistics All games

| Date         | Opponent          | Score | Att. |
|--------------|-------------------|-------|------|
| 08/17/2023   | South Carolina    | T 0-0 | 3917 |
| 08/20/2023   | Gardner-Webb      | W 9-0 | 634  |
| 08/24/2023   | at Utah Valley    | W 2-0 | 2678 |
| 08/27/2023   | at Utah           | W 1-0 | 918  |
| 08/31/2023   | Furman            | W 4-1 | 503  |
| 09/03/2023   | Western Caro.     | W 5-0 | 652  |
| 09/07/2023   | Arkansas          | W 1-0 | 507  |
| 09/10/2023   | at Georgia        | T 1-1 | 1368 |
| * 09/15/2023 | Florida St.       | L 2-4 | 1102 |
| * 09/21/2023 | at Miami (FL)     | W 5-0 | 184  |
| * 09/24/2023 | at Boston College | W 2-0 | 326  |
| * 09/30/2023 | Syracuse          | W 5-1 | 932  |
| * 10/05/2023 | Virginia          | T 1-1 | 583  |
| * 10/08/2023 | at Virginia Tech  | W 1-0 | 297  |
| * 10/13/2023 | at Duke           | W 1-0 | 1775 |
| * 10/19/2023 | Louisville        | W 3-0 | 362  |
| * 10/22/2023 | Pittsburgh        | W 1-0 | 867  |
| * 10/26/2023 | at Notre Dame     | L 0-2 | 496  |
| 10/29/2023   | Wake Forest       | W 1-0 | 795  |
| 11/02/2023   | vs Notre Dame     | W 3-2 | 678  |
| 11/05/2023   | vs Florida St.    | L 1-2 | 5745 |
| 11/10/2023   | Radford           | W 2-0 | 1775 |

| Record         | Overall | Home  | Away  | Neutral |
|----------------|---------|-------|-------|---------|
| All Games      | 16-3-3  | 9-1-2 | 6-1-1 | 1-1-0   |
| Conference     | 7-2-1   | 3-1-1 | 4-1-0 | 0-0-0   |
| Non-Conference | 9-1-2   | 6-0-1 | 2-0-1 | 1-1-0   |

| #                | Player             | GP        | G         | A         | PTS        | SH         | SH%         | SOG        | SOG%        | GWG      | PK-ATT     |
|------------------|--------------------|-----------|-----------|-----------|------------|------------|-------------|------------|-------------|----------|------------|
| 2                | Morris, Makenna    | 22        | 9         | 6         | 24         | 34         | .265        | 24         | .706        | 5        | 1-1        |
| 23               | Conti, Caroline    | 20        | 7         | 4         | 18         | 50         | .140        | 30         | .600        | 3        | 1-1        |
| 8                | Tobia, Jenna       | 22        | 4         | 8         | 16         | 37         | .108        | 14         | .378        | 1        | 0-0        |
| 29               | Meredith, Samantha | 22        | 6         | 2         | 14         | 27         | .222        | 19         | .704        | 0        | 0-0        |
| 10               | Lyles, Renee       | 22        | 5         | 4         | 14         | 32         | .156        | 16         | .500        | 1        | 1-1        |
| 9                | Duff, Mackenzie    | 22        | 6         | 1         | 13         | 10         | .600        | 6          | .600        | 3        | 0-0        |
| 24               | Bornkamp, Megan    | 21        | 3         | 6         | 12         | 38         | .079        | 18         | .474        | 0        | 0-0        |
| 11               | Short, Tatum       | 22        | 3         | 4         | 10         | 30         | .100        | 15         | .500        | 1        | 0-0        |
| 7                | Davis, Dani        | 22        | 1         | 8         | 10         | 29         | .034        | 9          | .310        | 1        | 0-0        |
| 13               | Wennar, Emma       | 22        | 3         | 2         | 8          | 28         | .107        | 13         | .464        | 0        | 0-0        |
| 15               | Hershfelt, Hal     | 20        | 1         | 4         | 6          | 19         | .053        | 7          | .368        | 0        | 0-0        |
| 5                | Brough, Emily      | 22        | 1         | 3         | 5          | 20         | .050        | 13         | .650        | 1        | 0-0        |
| 18               | Manousos, Maria    | 19        | 2         | 0         | 4          | 6          | .333        | 2          | .333        | 0        | 0-0        |
| 4                | White, Harper      | 20        | 0         | 2         | 2          | 5          | .000        | 1          | .200        | 0        | 0-0        |
| 22               | Gambino, Gabby     | 7         | 0         | 2         | 2          | 4          | .000        | 1          | .250        | 0        | 0-0        |
| 12               | Minarik, Sydney    | 20        | 0         | 1         | 1          | 10         | .000        | 4          | .400        | 0        | 0-0        |
| 25               | Lynch, Dani        | 5         | 0         | 1         | 1          | 0          | .000        | 0          | .000        | 0        | 0-0        |
| 3                | St. George, Layne  | 12        | 0         | 0         | 0          | 1          | .000        | 1          | 1.000       | 0        | 0-0        |
| 16               | Hauser, Ella       | 8         | 0         | 0         | 0          | 1          | .000        | 0          | .000        | 0        | 0-0        |
| 6                | Hays, Eleanor      | 1         | 0         | 0         | 0          | 0          | .000        | 0          | .000        | 0        | 0-0        |
| 26               | Holgorsen, Addy    | 3         | 0         | 0         | 0          | 0          | .000        | 0          | .000        | 0        | 0-0        |
| 1                | Mackiewicz, Halle  | 21        | 0         | 0         | 0          | 0          | .000        | 0          | .000        | 0        | 0-0        |
| <b>Total</b>     |                    | <b>22</b> | <b>51</b> | <b>58</b> | <b>160</b> | <b>381</b> | <b>.134</b> | <b>193</b> | <b>.507</b> | <b>-</b> | <b>3-3</b> |
| <b>Opponents</b> |                    | <b>22</b> | <b>14</b> | <b>11</b> | <b>39</b>  | <b>146</b> | <b>.096</b> | <b>66</b>  | <b>.452</b> | <b>-</b> | <b>0-1</b> |

### Team statistics

|                        | CU      | OPP    |
|------------------------|---------|--------|
| <b>SHOT STATISTICS</b> |         |        |
| Goals-Shot attempts    | 51-381  | 14-146 |
| Goals scored per game  | 2.32    | 0.64   |
| Shot pct.              | .134    | .096   |
| Shots on goal-Attempts | 193-381 | 66-146 |
| SOG pct.               | .507    | .452   |
| Shots/Game             | 17.3    | 6.6    |
| Assists                | 58      | 11     |
| <b>GOAL BREAKDOWN</b>  |         |        |
| Total Goals            | 51      | 14     |
| Penalty                | 3       | 0      |
| Unassisted             | -       | -      |
| Overtime               | 0       | 0      |
| Goals scored average   | 2.32    | 0.64   |
| CORNER KICKS           | 140     | 64     |
| PENALTY KICKS          | 3-3     | 0-1    |
| OFFSIDES               | 55      | 51     |
| <b>PENALTIES</b>       |         |        |
| Fouls                  | 180     | 158    |
| Yellow cards           | 19      | 21     |
| Red cards              | 0       | 1      |
| <b>ATTENDANCE</b>      |         |        |
| Total                  | 12629   | 8042   |
| Dates/Avg Per Date     | 12/1052 | 8/1005 |
| Neutral Site #/Avg     | 2/3212  | -      |

| #                | Goalie            | GP        | MIN.           | GA        | GA AVG      | SAVES      | PCT         | W-L-T         | SHO/CBO   |
|------------------|-------------------|-----------|----------------|-----------|-------------|------------|-------------|---------------|-----------|
| 26               | Holgorsen, Addy   | 3         | 128:54         | 1         | 0.70        | 0          | .000        | 1-0-0         | 1/0       |
| 1                | Mackiewicz, Halle | 21        | 1851:06        | 13        | 0.63        | 51         | .797        | 15-3-3        | 13/0      |
| TM               | TEAM              | -         | 00:00          | 0         | 0.00        | 1          | 1.000       | 0-0-0         | 0/0       |
| <b>Total</b>     |                   | <b>22</b> | <b>1980:00</b> | <b>14</b> | <b>0.64</b> | <b>52</b>  | <b>.788</b> | <b>16-3-3</b> | <b>14</b> |
| <b>Opponents</b> |                   | <b>22</b> | <b>1980:00</b> | <b>51</b> | <b>2.32</b> | <b>142</b> | <b>.736</b> | <b>3-16-3</b> | <b>2</b>  |

### Goals by Periods

| Team      | 1st | 2nd | OT1 | OT2 | TOTAL |
|-----------|-----|-----|-----|-----|-------|
| CU        | 25  | 26  | 0   | 0   | 51    |
| Opponents | 6   | 8   | 0   | 0   | 14    |

### Shots by Periods

| Team      | 1st | 2nd | OT1 | OT2 | TOTAL |
|-----------|-----|-----|-----|-----|-------|
| CU        | 179 | 202 | 0   | 0   | 381   |
| Opponents | 60  | 86  | 0   | 0   | 146   |

### Saves by Periods

| Team      | 1st | 2nd | OT1 | OT2 | TOTAL |
|-----------|-----|-----|-----|-----|-------|
| CU        | 19  | 33  | 0   | 0   | 52    |
| Opponents | 66  | 76  | 0   | 0   | 142   |

### Corners by Periods

| Team      | 1st | 2nd | OT1 | OT2 | TOTAL |
|-----------|-----|-----|-----|-----|-------|
| CU        | 73  | 67  | 0   | 0   | 140   |
| Opponents | 24  | 40  | 0   | 0   | 64    |

### Fouls by Periods

| Team      | 1st | 2nd | OT1 | OT2 | TOTAL |
|-----------|-----|-----|-----|-----|-------|
| CU        | 81  | 99  | 0   | 0   | 180   |
| Opponents | 70  | 88  | 0   | 0   | 158   |