



2023 MATCH NOTES

WOFFORD

VOLLEYBALL



@WoffordVB



@woffordvb



/WoffordAthletics



/WoffordTerriers

BIG ORANGE BASH



VS.



MATCHUP | AUG. 26 & 27

Wofford (0-0, 0-0 SoCon) vs. Middle Tennessee (0-0, 0-0 CUSA)

Wofford (0-0, 0-0 SoCon) at Clemson (0-0, 0-0 ACC)

HEAD COACHES

Wofford: Lynze Roos (Butler '01)

Middle Tennessee: Chuck Crawford (Miami Ohio '01)

Clemson: Jackie Simpson Kirr (Wisconsin '08)

SITE

Jervey Gym | Clemson, S.C.

LIVE COVERAGE

ACCNX (at Clemson only)

WOFFORD 2023 SCHEDULE | RECORD: 0-0, 0-0 SoCon

Date	Opponent	Location	Time/Result
Aug. 26	vs. Middle Tennessee	Clemson, S.C.	2:00 p.m.
Aug. 27	at Clemson	Clemson, S.C.	1:00 p.m.
Sept. 1	South Carolina State	Spartanburg, S.C.	9:30 a.m.
Sept. 1	Georgia State	Spartanburg, S.C.	7:00 p.m.
Sept. 2	Elon	Spartanburg, S.C.	1:00 p.m.
Sept. 5	High Point	Spartanburg, S.C.	6:00 p.m.
Sept. 8	Presbyterian	Spartanburg, S.C.	12:30 p.m.
Sept. 8	Saint Francis	Spartanburg, S.C.	7:30 p.m.
Sept. 9	Belmont	Spartanburg, S.C.	1:00 p.m.
Sept. 15	vs. George Washington	Charlottesville, Va.	4:30 p.m.
Sept. 16	vs. UVA/Norfolk State	Charlottesville, Va.	TBD
Sept. 22	at Mercer*	Macon, Ga.	6:00 p.m.
Sept. 23	at Chattanooga*	Chattanooga, Tenn.	4:00 p.m.
Sept. 28	Furman*	Spartanburg, S.C.	6:00 p.m.
Sept. 29	Samford*	Spartanburg, S.C.	6:00 p.m.
Oct. 6	at UNCG*	Greensboro, N.C.	6:00 p.m.
Oct. 7	at The Citadel*	Charleston, S.C.	7:00 p.m.
Oct. 12	at Western Carolina*	Cullowhee, N.C.	6:00 p.m.
Oct. 13	at ETSU*	Johnson City, Tenn.	6:00 p.m.
Oct. 20	Chattanooga*	Spartanburg, S.C.	6:00 p.m.
Oct. 21	Mercer*	Spartanburg, S.C.	6:00 p.m.
Oct. 27	at Samford*	Birmingham, Ala.	8:00 p.m.
Oct. 28	at Furman*	Greenville, S.C.	7:00 p.m.
Nov. 2	The Citadel*	Spartanburg, S.C.	6:00 p.m.
Nov. 3	UNCG*	Spartanburg, S.C.	6:00 p.m.
Nov. 10	Western Carolina*	Spartanburg, S.C.	6:00 p.m.
Nov. 11	ETSU*	Spartanburg, S.C.	6:00 p.m.
Nov. 17-19	SoCon Tournament #	Spartanburg, S.C.	

* Southern Conference | # SoCon Tournament
All times listed are EASTERN (ET)

WOFFORD VOLLEYBALL NOTES

LAST TIME OUT - THE 2022 SOUTHERN CONFERENCE TOURNAMENT:

- Wofford opened the 2022 Southern Conference Tournament with a match-up against Chattanooga, putting up a strong effort but ultimately falling in five sets to the Mocs.
- Three Terriers tallied double-doubles for Wofford: Mary Emily Morgan (14 kills, 18 digs), Kennedy Smith (13 kills, 22 digs) and Victoria Hensley (52 assists, 15 digs).
- Despite this and a better hitting clip (.195 to UTC's .181), the Mocs won the net (12-10) and dominated the service line with nine aces to just five for the Terriers.
- After winning the first two sets, Wofford dropped a thrilling third set 27-25. This sparked the Mocs, setting up a comeback that saw Chattanooga win sets four and five thereafter to win and advance to the semifinals.

2023 WOFFORD OUTLOOK:

- Wofford returns 13 players while welcoming six newcomers in 2023.
- Three starters return (Sarah Barham, Millie Loehr and Mary Emily Morgan) while three departed (Victoria Hensley, Kennedy Smith and Bella Zeman). Libero Abbey Richman also returns for this season.
- The roster features six seniors (Barham, Addison Foote, Emily Hodsdon, Loehr, Richman and Elise Schneider).
- Three juniors, four sophomores and six freshmen round out the roster.
- The Terriers will host two non-conference tournaments again in 2023 after doing so for the first time in 2022. The annual Wofford Invitational returns alongside the second-ever Terrier Invite. Wofford won the inaugural event last season.

MATCH-UP PREVIEW - BIG ORANGE BASH:

- Wofford and Middle Tennessee are playing for just the third time ever. The all-time series is split with each squad owning a win. MTSU won the first bout in four sets in

SERIES AT A GLANCE (vs. Middle Tennessee)

Overall Meetings	Third, Series tied 1-1
Series Streak	W1
Last Meeting	Sept. 15, 2018 (W, 3-0)

SERIES AT A GLANCE (vs. Clemson)

Overall Meetings	Seventh, Clemson leads 6-0
Series Streak	L6
Last Meeting	Aug. 31, 2019 (L, 0-3)

RETURNING TERRIER LEADERS

Attack Percentage	Millie Loehr (.391)
Kills	Sarah Barham (251, 2.26 K/S)
Assists	Emily Hodsdon (402, 5.22 A/S)
Service Aces	Abbey Richman (28, 0.27 SA/S)
Blocks	Sarah Barham (123.0, 1.11 B/S)
Digs	Abbey Richman (389, 3.81 D/S)

COACHING STAFF

Head Coach	Lynze Roos (Butler '01), Ninth Season
Record at School/Overall Record	127-110 (.536) / 291-229 (.560)
Associate Head Coach	Ladislav Lelkes (Barton '14), First Season
Assistant Coach	Shannah Carter (UW-Stevens Point '19), First Season
Assistant Coach	Allison Whitten (Morehead State '22), First Season

ATHLETIC COMMUNICATIONS

Assistant Director/VB Contact	Wyatt Streett (Clemson '19)
Office / Cell Phone	(864) 597-4098 / (843) 496-8030
E-mail	streettwd@wofford.edu
Twitter	@wyattstreett



WOFFORD
VOLLEYBALL

WOFFORD VOLLEYBALL NOTES

2000 on a neutral floor, but Wofford grabbed the second meeting in 2018 in straight sets at home.

- Both of those meetings took place on September 15 in their respective years, so this will be the first time the Terriers and Blue Raiders battle on a different calendar date.
- Wofford and Clemson will square off for the seventh time and for the first time since 2019. The Tigers have won all six of the previous meetings.
- Five of the six contests have ended in straight-set sweeps, with the lone exception being a five-set match in 2016.
- This will be Wofford's third time playing in Clemson's Big Orange Bash, with the two previous instances coming in 2016 and 2019.
- Wofford is 1-5 all-time in the event, with the lone win coming in 2016 over William & Mary in five sets.
- Four of the five losses have come in straight sets, with the exception being a five-set loss to Clemson in 2016.
- Each of the previous performances in the Big Orange Bash opened the season, and the trend continues with this year's foray also opening the campaign.

HOME SWEET HOME:

- The Terriers went 9-5 at home in 2022, but they were 7-8 away from home (4-6 away, 3-2 neutral).
- Wofford has posted a winning record at home in eight consecutive seasons, each year since 2015. The last home record below .500 was 2014's 5-8 mark.
- Since the Jerry Richardson Indoor Stadium opened in 2017, the Terriers are a staggering 47-14 overall in their home facilities. Wofford has never posted a losing home record in Jerry Richardson Indoor Stadium.

NEW KIDS ON THE BLOCK:

- Wofford welcomes six newcomers to the team for 2023, all freshmen. The fresh faces are MB/RS Natalie Arnold, L Laney Klika, OH Bri Mahoney, OH Emily Normand, S Taylor Pecht and RS Ella Schomer.
- Arnold tallied 640 kills in her high school career and hit .350 while leading her team to a state title in 2022.
- Klika owns 1,656 digs over her high school career and more than 220 aces.
- Mahoney was back-to-back region player of the year in 2021 and 2022.
- Normand was named to the AVCA Phenom Watch List in both 2021 and 2022.
- Pecht is a First-Team MaxPreps All-American and has accrued over 4,000 assists.
- Schomer is a four-time AVCA Phenom and has been named an AVCA All-American.

FRESH FACES ON THE COACHING STAFF:

- Head Coach Lynze Roose returns for her ninth season in Spartanburg, but she will be surrounded by a new-look staff this season.
- Former associate head coach Ali Skayhan was hired as the head coach at USC Upstate over the offseason, and Justin Sanders followed Skayhan across town.
- Ladislav Lelkes (Barton '14) will be the Terriers' new associate head coach this season. He joins Wofford after spending a season at Bradley and the prior three years with Alabama.
- Shannah Carter (UW-Stevens Point '19) joins as one of two other new assistant coaches. Carter had

been coaching at Lakeville South High School in her home state of Minnesota while also assisting with the prestigious club M1 Volleyball. She forayed into coaching after concluding her playing career at UW-Stevens Point, where she totaled 336 digs in 222 sets as a defensive specialist and libero.

- Allison Whitten (Morehead State '22) is the most recent addition to the staff. She just completed her playing career and her graduate certificate at Creighton after the first leg of her career ended with her graduation from Morehead State. A defensive specialist and libero, Whitten played every match over her five-year career. She owns over 2,000 digs and 120 service aces across her career.
- Whitten will continue her playing career at season's end. The Pro Volleyball Federation, a new professional volleyball league based in the US, begins play in February of 2024, and Whitten is set to play for the yet-to-be-named Atlanta team.

PRESEASON VOTING:

- Wofford was picked third in the SoCon preseason coaches poll. The Terriers earned two first-place votes and tallied 52 total points in the poll, five behind second-place Samford (57). ETSU (58) edged the Bulldogs and tallied five first-place votes to be named the league's favorite.
- The Terriers have been selected in the top three in each of the last three preseason polls, including a first-place pick last season.
- Under head coach Lynze Roos, Wofford has been picked worse than fifth only once, a seventh-place selection in 2015, her first year as coach. In each of the eight years since (including 2023), her squad has been picked no worse than fifth and owns four total top-three predictions.
- Sarah Barham was recognized on the Preseason All-SoCon Team for a second-straight season. She earns this honor after finishing last season as a Second-Team All-SoCon representative.
- Notably absent from the preseason honorees is fellow 2022 All-SoCon Second-Team selection Millie Loehr, who led the league in hitting percentage at .391, a new Wofford single-season program record and the 25th-best mark in the nation.

POSTSEASON HONORS:

- Three Terriers were recognized with postseason SoCon honors in 2022: Sarah Barham and Millie Loehr both on the All-SoCon Second Team and Victoria Hensley on the SoCon All-Freshman Team.
- This was the third-straight season Wofford has had a player on an all-conference team and on the second team specifically.
- This was also the third consecutive season with a Terrier on the all-freshman squad, and Hensley is the fourth Terrier in the last three seasons to earn the honor (Sarah Barham, Emily Hodsdon and Sarah MacLean).

TERRIERS IN GREECE:

- The Wofford volleyball team took a 10-day trip to Greece over the summer. The Terriers played three matches during their excursion in June and took multiple sightseeing trips in the nation.

Record Breakdown

Home:	0-0
Road:	0-0
Neutral:	0-0
Non-conference:	0-0
Conference:	0-0
Doubleheaders:	0-0
3 sets:	0-0
4 sets:	0-0
5 sets:	0-0
Winning first set:	0-0
Losing first set:	0-0
Recording more aces:	0-0
Opp. records more aces:	0-0
Aces are tied:	0-0
Recording more blocks:	0-0
Opp. records more blocks:	0-0
Blocks are tied:	0-0
Recording more assists:	0-0
Opp. records more assists:	0-0
Assists are tied:	0-0

Uniform:

-White:	0-0
-Black:	0-0

Month:

-August:	0-0
-September:	0-0
-October:	0-0
-November:	0-0

Day:

-Sunday:	0-0
-Monday:	0-0
-Tuesday:	0-0
-Wednesday:	0-0
-Thursday:	0-0
-Friday:	0-0
-Saturday:	0-0

Against Conferences:

-ACC:	0-0
-Atlantic 10:	0-0
-Big South:	0-0
-CAA:	0-0
-CUSA:	0-0
-MEAC:	0-0
-Missouri Valley:	0-0
-NEC:	0-0
-SoCon:	0-0
-Sun Belt:	0-0

Location:

-Alabama:	0-0
-Georgia:	0-0
-North Carolina:	0-0
-South Carolina:	0-0
-Tennessee:	0-0
-Virginia:	0-0



WOFFORD VOLLEYBALL NOTES

- Sightseeing featured trips to Athens, Aegina, Bourtz Castle, Palamidi Castle, Paros Island and the Temple of Poseidon.
- On the court, the Terriers played three matches against professional competition, going 2-1.
- Sarah Barham shined, tallying the most kills and a team-leading .487 hitting clip. She added 13 blocks.
- Millie Loehr joined her fellow senior middle with 13 swats at the net, and she also hit over .400 with a .464 mark.
- Mary Emily Morgan was also stout with a .289 hitting percentage, and Sarah MacLean added an attacking clip of .286.
- Of the freshmen, Ella Schomer showed out with the second-most kills on the squad while hitting .333.
- The team as a whole tallied eight solo blocks and 65 block assists.

BLOCK PARTY:

- Wofford is stout at the net, tallying 2.23 blocks per set to rank second in the conference in 2022. The 252.5 total team blocks also ranked third in the conference.
- Sarah Barham is the top blocking Terrier, second in the conference with 123 total blocks, just behind the 129 of Western Carolina's Eden Punch. Barham's 1.11 blocks per set topped the league. Those 123 blocks were good for 86th in the nation.

SETTING THE BAR(HAM):

- Sarah Barham has been an exceptional two-dimensional player for Wofford, as her offense is just as good as her blocking defense.
- Barham's 251 total kills were second on the squad in 2022 behind Bella Zeman's 314, and her 2.26 kills per set ranked 20th in the SoCon.
- But Barham does not just rack up the kills, she is efficient, too. Her .333 hitting percentage was second on the squad and in the conference, behind Millie Loehr's .391.

TOP DOGS:

- Wofford ranked top six in the Southern Conference in every statistical category. The Terriers were top five in all but four categories, all of which were sixth - aces per set (1.51), team attacks per set (35.67), team digs (1,768) and team total attacks (4,031).
- The squad was best in the league in opponent hitting percentage (.182).
- The Terriers were second in assists per set (11.92), blocks per set (2.23), hitting percentage (.226) and kills per set (13.01).

ON THE RIGHT FOOT:

- Starting a match off well was do or die for the Terriers last season, as the winner of the first set almost always won the match.
- Wofford was 15-4 when claiming set one, but it was only 1-9 when dropping the first set. The five-set win over Coastal Carolina was Wofford's only win after losing the first set.
- The only four Terrier losses when claiming set one were against App State, at ETSU, against Mercer and versus Chattanooga in the SoCon Tournament.

BREAK OUT THE BROOMS:

- Eleven of Wofford's 16 wins in the 2022 season were straight-set sweeps. The lone exceptions were five-set triumphs over Coastal Carolina and Furman (twice) and four-set wins over Presbyterian and Samford.
- The 11 sweeps are the most for the Terriers in a single season since posting 11 straight-setters in 2017.
- Wofford was just two sweeps shy of the Division I program record of 13 straight-set wins in 2009.
- The straight-set loss to Chattanooga in match 14 of the campaign is the latest Wofford has ever been swept in a season in its Division I era, topping the previous mark set in 2008 when The Citadel delivered a sweep in the 12th match of that season.
- The Terriers reached six sweeps just 11 matches into the campaign, surpassing the five of the prior season, which totaled 31 matches.

ONE IN A MILLIE:

- Millie Loehr has been the most efficient attacker not just in a Wofford uniform, but in the entire Southern Conference. Her team-leading .391 hitting percentage was best in the league in 2022, ahead of teammate Sarah Barham's second-place .333 clip. Loehr's mark also ranked 25th in the country.
- As a cherry on top, Loehr's hitting clip shattered the Wofford program single-season record, previously held by Arden Anderson, who hit .348 in 2011.
- With 2.37 kills per set, she ranked 18th in the conference and second on the team. With 242 kills, Loehr was one of six Terriers in triple figures and one of four over 200.
- She is the second-best net-minder on the team behind Barham, swatting 79 total blocks, 0.77 per set. Her seven swats at Furman tied her career best.

DOUBLE TROUBLE:

- Four Terriers recorded a double-double in 2022: Victoria Hensley, Emily Hodsdon, Mary Emily Morgan and Kennedy Smith.
- Victoria Hensley paced the team with seven double-doubles. Smith and Hodsdon each posted six to tie for second, and Morgan contributed three.
- Hodsdon is the returning leader with her six double-doubles last season.
- With back-to-back double-doubles against Furman and Western Carolina, Smith became the first Terrier on the season to record consecutive double-doubles. She is one of three Terriers to accomplish the feat, with Victoria Hensley and Emily Hodsdon also doing it.
- Though posting 22 double-doubles as a team, Wofford has not found consistent success when notching the accomplishment. The Terriers were 6-8 in matches in which at least one player tallied a double-double, and Wofford was 1-5 when multiple Terriers recorded a double-double. The win at Furman was the first for the Terriers with multiple double-doubles.

DYNAMIC DUO:

- Millie Loehr and Sarah Barham were a terrific tandem in 2022, as each finished top three in the Wofford record book for single-season hitting percentage.
- Loehr shattered the record with her .391 clip, topping Arden Anderson's mark of .348 in 2011.

Double-Doubles (0)



WOFFORD VOLLEYBALL NOTES

- Barham's .333 clip was not far behind, checking in at third all time.
- This marks the best single-season attack duo in program history. Only two other sets of teammates from the same season are in the current top 10. In 2016, Kara Shacklette hit .316, and Colleen Reilly hit .291. They currently rank sixth and 10th on the list. In 2017, the duo did it again, as Reilly hit .312 with Shacklette hitting .297 to clock in at seventh and ninth, respectively.
- But Loehr and Barham have far exceeded those paces to own two of the top three slots in the program's record book. The pair will look to run it back, just as Shacklette and Reilly did, during their senior season.

OPEN THE RECORD BOOKS:

- Sarah Barham is leaving her mark on the Wofford record books. Not only did she set a single-season record with 138 total blocks in 2021, but she's climbing the all-time career leaderboards, too.
- Barham is currently Wofford's career leader in hitting percentage (min. 1,000 attempts) with a .318 mark. Her 1.11 blocks per set rank second, just shy of Currie Gossett's 1.13, and her 3.15 points per set rank eighth. With 106 solo blocks, she is currently third, and her 324 total blocks are good for sixth place.
- With her second block at UNGC on Oct. 29, Barham became just the eighth Terrier all-time to join the 300-block club.
- Barham isn't the only one climbing the leaderboards. Fellow senior Emily Hodsdon has dished 2,193 assists, good for eighth place. Her 8.50 assists per set rank third, and her 0.32 aces per set are seventh.
- Rounding out a stellar senior trio is Millie Loehr, who shattered the program's single-season record for hitting percentage in 2022. Loehr's .391 mark far surpassed the previous record of .348 set by Arden Anderson in 2011.

CAN YOU DIG IT?:

- Abbey Richman stepped up into the libero role beginning with the match against Incarnate Word last season and thrived since, recording double-digit digs in each of the 21 matches. She also paced the squad in digs in each of those contests.
- With 389 digs, Richman led the team (3.81 per set). Of those digs, 287 came in SoCon play to pace the team.
- Richman finished seventh in the SoCon with her 389 digs.
- Her 22 digs at Mercer set a new single-match high for the Terriers in 2022, which she then topped one week later with 30 more against Chattanooga.

SERVING UP ACES:

- Abbey Richman was not far behind the team service lead with 28 aces at a rate of 0.27 per set. Emily Hodsdon was third on the squad with 20 aces, 0.26 per set.
- In SoCon play only, Richman led with 22 aces.
- Also returning are Mary Emily Morgan (19) and Caroline Przystup (17), both of whom fell just shy of 20 aces on the campaign.
- With so many key pieces returning, the Terrier service should look to thrive in 2023.

SOCON PLAY:

- Wofford is 4-22 all-time in SoCon openers and 1-7 in them under Head Coach Lynze Roos.
- Wofford is 8-18 all-time in home SoCon openers.
- Despite the tough starts to conference play, Wofford has posted a .500 or better SoCon record in four-straight seasons, including an 8-8 clip last season.
- Wofford is 149-294 all-time in SoCon action, but the Terriers own a 68-60 SoCon record under Lynze Roos.

IN THE CLASSROOM:

- Nine Terriers were honored on the 2022 Fall Academic All-Southern Conference Team: Sarah Barham, Kaitlyn Brown, Emily Hodsdon, Millie Loehr, Mary Emily Morgan, Chasidy Sharpe, Kennedy Smith, Emory Wyatt and Bella Zeman.
- In total, 18 Terriers were named to the 2022-23 SoCon Academic Honor Roll. All nine of the all-academic honorees were selected to the honor roll, with Alexa Bertsch, Addison Foote, Sarah MacLean, Caroline Przystup, Annemarie Rakoski, Abbey Richman, Elise Schneider, Mad Wilson and Meghan Yaffa also being recognized.
- A program-record four Terriers earned College Sports Communicators (CSC) Academic All-District honors last season: Millie Loehr, Mary Emily Morgan, Kennedy Smith and Bella Zeman.
- With a 3.5 team GPA for the 2022-23 academic year, the Wofford volleyball team once again was recognized with the USMC/AVCA Team Academic Award. The Terriers were one of over 1,332 collegiate and high school volleyball programs to be honored.

Match Streaks

Active

Double-digit digs

- Abbey Richman: 21 (9/10-11/18)

2022 Season Highs

Double-digit kills

- Sarah Barham: 5 (8/26-9/2)
- Millie Loehr: 2, 3x (last: 11/11-11/12)
- Kennedy Smith: 6 (9/24-10/14)*
- Bella Zeman: 6, twice (last: 10/14-10/28)*

Double-digit digs

- Kaitlyn Brown: 3 (9/2-9/9)*
- Mary Emily Morgan: 5 (9/2-9/10)
- Caroline Przystup: 2 (9/2-9/2)
- Abbey Richman: 21 (9/10-11/18)*
- Kennedy Smith: 4 (10/5-10/21)*

Double-digit assists

- Emily Hodsdon: 7 (8/26-9/9)
- Victoria Hensley: 25 (9/2-11/18)*

20+ assists

- Emily Hodsdon: 7 (8/26-9/9)
- Victoria Hensley: 9, twice (last: 10/21-11/18)*

5+ blocks

- Sarah Barham: 4 (10/22-10/29)
- Millie Loehr: 2 (10/26-10/28)

3+ aces:

- Emily Hodsdon: 2, twice (9/16-9/16)

Double-doubles

- Emily Hodsdon: 2 (10/15-10/21)
- Kennedy Smith: 2, twice (last: 10/5-10/14)

THE LAST TIME...



INDIVIDUAL

20+ kills:	Bella Zeman (20) vs. Georgia State (Sept. 16, 2022)
25+ kills:	Catie Cronister (31) at UNCG (Nov. 4, 2017)
30+ kills:	Catie Cronister (31) at UNCG (Nov. 4, 2017)
35+ kills:	Andrea Duke (35) vs. UNC Wilmington (Aug. 30, 2003)
Double-digit kills in 5-straight matches:	Bella Zeman, 6 matches, (Oct. 14-28, 2022)
4+ players with double-digit kills:	Barham, MacLean, Morgan & Smith vs. Chattanooga (Nov. 18, 2022)
Hit .750 or better (min. 10 att.):	Millie Loehr (.750, 16 kills, 20 att.) vs. Presbyterian (Sept. 17, 2022)
Hit 1.000 (min. 10 kills):	Sarah Barham (11 kills, 11 att.) vs. The Citadel (Feb. 28, 2021)
No attack errors (min. 10 att.)	Sarah Barham & Sarah MacLean vs. Samford (Nov. 11, 2022)
50+ attacks:	Kennedy Smith (56) at Furman (Oct. 26, 2022)
80+ attacks:	Shanna Hughes (88) at Chattanooga (Oct. 11, 2008)
100+ attacks:	Andrea Duke (106) vs. UNC Wilmington (Aug. 30, 2003)
20+ digs:	Abbey Richman (24) vs. Chattanooga (Nov. 18, 2022)
30+ digs:	Abbey Richman (30) vs. Chattanooga (Oct. 21, 2022)
40+ digs:	Brittany Thompson (44) vs. Elon (Nov. 8, 2008)
Double-digit digs in 10-straight matches:	Abbey Richman, 21 - active (Sept. 10 - Nov. 18, 2022)
Two or more players with 10+ digs:	Hensley, Morgan, Richman & Smith vs. Chattanooga (Nov. 18, 2022)
50+ assists:	Victoria Hensley (52) vs. Chattanooga (Nov. 18, 2022)
60+ assists:	Emily Hodsdon (63) vs. Stony Brook (Aug. 8, 2021)
70+ assists:	Rhea DeJesus (70) vs. Youngstown State (Nov. 18, 2004)
7+ blocks:	Sarah Barham (8) at UNCG (Oct. 29, 2022)
10+ blocks:	Sarah Barham (11) vs. Furman (Nov. 20, 2021)
Two or more players with 5+ blocks:	Mary Emily Morgan & Millie Loehr vs. The Citadel (Nov. 2, 2022)
5+ aces:	Robyn Krause (5) vs. Samford (Oct. 23, 2021)
10+ aces:	Erin Dixon (14) vs. Savannah State (Oct. 7, 2001)
Two players with 3+ aces:	Millie Loehr and Mary Emily Morgan vs. Samford (Nov. 11, 2022)
Recorded a double-double:	Hensley, Morgan & Smith vs. Chattanooga (Nov. 18, 2022)
Recorded back-to-back double-doubles:	Victoria Hensley, 3 straight (Oct. 14-21, 2022)
Two or more players recorded a double-double:	Hensley, Morgan & Smith vs. Chattanooga (Nov. 18, 2022)

TEAM

65+ kills:	65 vs. Chattanooga (Nov. 18, 2022)
75+ kills:	75 vs. Stony Brook (Aug. 27, 2021)
Hit .350 or better:	.351 vs. UNCG (Oct. 2, 2022)
Hit .400 or better:	.423 vs. South Carolina State (Sept. 16, 2022)
Hit .500 or better:	.500 vs. NC A&T (Nov. 13, 2011)
75+ digs:	94 vs. Chattanooga (Nov. 18, 2022)
100+ digs:	105 at Mercer (Nov. 2, 2016)
125+ digs:	129 at College of Charleston (Nov. 25, 1998)
60+ assists:	61 vs. Chattanooga (Nov. 18, 2022)
70+ assists:	71 at Mercer (Nov. 2, 2016)
80+ assists:	83 vs. Mercer (Nov. 24, 2016)
15+ blocks:	16 vs. Furman (Nov. 20, 2021)
20+ blocks:	20 at Mercer (March 7, 2021)
10+ aces:	10 at Mercer (Oct. 14, 2022)
20+ aces:	20 vs. Quinnipiac (Aug. 25, 2006)
30+ aces:	30 at Savannah State (Oct. 12, 2022)
Straight-set win:	at The Citadel (Nov. 2, 2022)
Straight-set loss:	at Chattanooga (Sept. 24, 2022)
Four-set win:	vs. Samford (Nov. 11, 2022)
Four-set loss:	at Western Carolina (Oct. 28, 2022)
Five-set win:	at Furman (Oct. 26, 2022)
Five-set loss:	vs. Chattanooga (Nov. 18, 2022)
Lost consecutive home matches:	Chattanooga & ETSU (Oct. 21 & 22, 2022)
Lost consecutive road matches:	ETSU, Chattanooga, Mercer & Samford (Sept. 23 - Oct. 15, 2022)
Won a non-conference tournament:	Terrier Invite (September 2022)
Won 10+ matches consecutively:	12 straight (Nov. 5-24, 2009)



HEAD-TO-HEAD COMPARISON (2022 STATS)

WOFFORD TERRIERS

Kills:	1,470
Kills/set:	13.01
Attack Percentage:	.226
Assists:	1,347
Assists/set:	11.92
Aces:	.171
Digs:	1,768
Digs/set:	15.65
Total blocks:	252.5
Blocks/set:	2.23



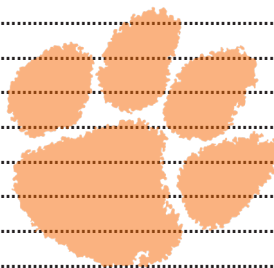
MIDDLE TENNESSEE BLUE RAIDERS

Kills:	1,308
Kills/set:	12.2
Attack Percentage:	.254
Assists:	1,197
Assists/set:	11.2
Aces:	.203
Digs:	1,350
Digs/set:	12.6
Total blocks:	214.5
Blocks/set:	2.0



CLEMSON TIGERS

Kills:	1,575
Kills/set:	12.91
Attack Percentage:	.209
Assists:	1,467
Assists/set:	12.02
Aces:	.186
Digs:	1,729
Digs/set:	14.17
Total blocks:	208
Blocks/set:	1.70



MATCH-UP PREVIEW VS. MIDDLE TENNESSEE

Last meeting:	9/15/18 - W, 3-0 (H)
Last win:	9/15/18 - W, 3-0 (H)
All-time record:	1-1
Record under Roos:	1-0
Record home (under Roos):	1-0 (1-0)
Record away (under Roos):	0-0 (0-0)
Record neutral (under Roos):	0-1 (0-0)
MTSU's last five matches (2022):	
.....	11/18 vs. #20 Western Kentucky - L, 0-3
.....	11/12 vs. #21 Rice - L, 0-3
.....	11/10 at Charlotte - L, 0-3
.....	11/6 at North Texas - L, 0-3
.....	11/4 at UTEP - L, 0-3

MATCH-UP PREVIEW VS. CLEMSON

Last meeting:	8/31/19 - L, 0-3 (A)
Last win:	N/A
All-time record:	0-6
Record under Roos:	0-2
Record home (under Roos):	0-0 (0-0)
Record away (under Roos):	0-5 (0-2)
Record neutral (under Roos):	0-1 (0-0)
Clemson's last five matches (2022):	
.....	12/3 vs. Toledo - L, 1-3
.....	11/15 at Wake Forest - L, 1-3
.....	10/18 vs. Georgia Tech - L, 0-3
.....	11/13 vs. NC State - W, 3-1
.....	11/11 vs. Miami - L, 1-3

SOUTHERN CONFERENCE STANDINGS

Team	Conference	Overall
ETSU	0-0	0-0
Samford	0-0	0-0
Western Carolina	0-0	0-0
Chattanooga	0-0	0-0
Wofford	0-0	0-0
Mercer	0-0	0-0
The Citadel	0-0	0-0
UNCG	0-0	0-0
Furman	0-0	0-0



Honors & Awards

Sarah Barham

- Preseason All-SoCon

TERRIERS IN THE RANKINGS (2022 FINAL STATS)



SoCon RANKINGS

BLOCKS PER SET

1.	1.11	Sarah Barham	WOF
2.	1.08	Lundyn Coffman	ETSU
3.	1.06	Eden Punch	WCU

HITTING PERCENTAGE

1.	.391	Millie Loehr	WOF
2.	.333	Sarah Barham	WOF

KILLS PER SET

1.	3.90	Ali Ruffin	CIT
...			
7.	2.91	Gracie Lynn Butler	SAM
8.	2.91	Bella Zeman	WOF
...			
17.	2.42	Halle Olson	UTC
18.	2.37	Millie Loehr	WOF
19.	2.37	Jenna Forster	ETSU
20.	2.26	Sarah Barham	WOF

TOTAL BLOCKS

1.	129	Eden Punch	WCU
2.	123	Sarah Barham	WOF
3.	122	Johnna Robinson	WCU

TOTAL DIGS

1.	596	Paige Gallentine	UTC
...			
6.	405	Andrea Aceveda	FUR
7.	389	Abbey Richman	WOF

NCAA RANKINGS

HITTING PERCENTAGE

1.	.447	Claudia Dillon	UCF
...			
24.	.391	Mallory Talbert	BAY
25.	.391	Millie Loehr	WOF

WOFFORD CAREER RANKINGS

ATTACK PCT. (MIN. 1,000 ATTEMPTS)

1.	.318	Sarah Barham	2020-Pres.
2.	.303	Kara Shacklette	2016-19

ASSISTS

1.	4,271	Molly Bushong	1999-02
2.	3,935	Joanna Suddath	2006-09
3.	3,752	Rhea DeJesus	2002-05
4.	3,723	Lorissa King	2016-19
5.	3,634	Bekah Dorsey	2010-13
6.	2,657	Jennifer Nodine	1990-93
7.	2,606	Molly Mayo	2014-15
8.	2,193	Emily Hodsdon	2020-Pres.

ASSISTS PER SET (MIN. 200 SETS)

1.	9.43	Molly Bushong	1999-02
2.	8.92	Joanna Suddath	2006-09
3.	8.50	Emily Hodsdon	2020-Pres.
4.	8.27	Lorissa King	2016-19

ACES PER SET (MIN. 200 SETS)

1.	0.64	Jennifer Nodine	1990-93
2.	0.62	Andrea Duke	2001, 03-04
3.	0.43	LeAnne Oliver	1992-95
4.	0.41	Catie Cronister	2016-19
5.	0.35	Lisa Lindemenn	2004-06
6.	0.33	Jessica Johnson	2000-02
7.	0.32	Emily Hodsdon	2020-Pres.
8.	0.32	Judy Nwajiaku	1986-89

TOTAL BLOCKS

1.	514	Currie Gossett	1999-02
2.	421	Cindy Vinyard	1990-93
3.	398	Arden Anderson	2009-12
4.	331	Wendy Burnett	2010-13
5.	329	Colleen Reilly	2015-18
6.	324	Sarah Barham	2020-Pres.
7.	314	Riley Coonan	2017-20

BLOCK SOLOS

1.	209	Currie Gossett	1999-02
2.	171	Cindy Vinyard	1990-93
3.	106	Sarah Barham	2020-Pres.

BLOCK ASSISTS

1.	342	Arden Anderson	2009-12
2.	305	Currie Gossett	1999-02
3.	289	Colleen Reilly	2015-18
4.	283	Wendy Burnett	2010-13
5.	250	Cindy Vinyard	1990-93
6.	227	Riley Coonan	2017-20
7.	225	Liz Sheets	2005-08
8.	224	Catelyn Amende	2007-10
9.	218	Sarah Barham	2020-Pres.

BLOCKS PER SET (MIN. 200 SETS)

1.	1.13	Currie Gossett	1999-02
----	------	----------------	---------

2.	1.11	Sarah Barham	2020-Pres.
3.	0.97	Cindy Vinyard	1990-93

POINTS PER SET* (MIN. 200 SETS)

1.	4.63	Andrea Duke	2001, 03-04
2.	4.39	Catie Cronister	2016-19
3.	3.64	Cindy Vinyard	1990-93
4.	3.49	Bella Santoro	2014-17
5.	3.43	Currie Gossett	1999-02
6.	3.25	Katie Laser	2001-04
7.	3.18	Colleen Reilly	2015-18
8.	3.15	Sarah Barham	2020-Pres.
9.	3.13	Katie Adams	1997-98

*Points were not officially recognized by the NCAA until 2003. The record book includes seasons prior to '03.



SARAH BARHAM IS WOFFORD'S ALL-TIME LEADER IN HITTING PERCENTAGE AND BECAME THE MOST RECENT MEMBER OF THE 300-BLOCK CLUB.



EMILY HODSDON IS THIRD ALL-TIME IN ASSISTS PER SET AT WOFFORD WHILE CONTINUING TO RISE IN TOTAL ASSISTS.





HEAD COACH

LYNZE ROOS



SEASON: 16th overall; eighth at Wofford
RECORD AT WOF: 127-109 (68-60 SoCon)
CAREER: 291-228
PERSONAL: Matt (husband); Loren (son); Lyle (daughter)

Lynze Roos enters her ninth season as head coach of the Wofford volleyball team in 2023. She was named the seventh head coach of the program on July 8, 2015 after spending the previous nine seasons (2006-14) as the head coach at Lynn University.

In the 2022 Season, Wofford finished 16-13 with an 8-8 Southern Conference record. The Terriers entered the SoCon Tournament as the No. 5 seed but fell in the first round. Wofford was again tough at home, going 9-5 in the Jerry Richardson Indoor Stadium. Wofford hosted two non-conference tournaments for the first time, the Wofford Invitational and the inaugural Terrier Invite. Roos led her squad to win a pair of non-conference tournaments, the CoFC Classic hosted by College of Charleston and Wofford's own Terrier Invite. For a second-straight season, three Terriers garnered All-Southern

Conference recognition, with Sarah Barham and Millie Loehr being named to the second team and Victoria Hensley earning an All-Freshman Team nod. Barham led the league in blocks per set (1.11), and Loehr topped the conference in hitting percentage (.391), which set a new single-season Wofford program record. The Terriers led the SoCon in opponent hitting percentage (.182) and finished second in the league in assists per set (11.92), blocks per set (2.23), hitting percentage (.226) and kills per set (13.01).

In the 2021 season, Roos' squad continued to climb. Wofford finished 17-14 overall and 9-7 in Southern Conference play. As the No. 4 seed, the Terriers reached the Southern Conference Championship for the first time since 2017, finishing as the runners-up. The 17 overall wins are the most since that 2017 campaign. The fourth seed tied for the best in program history, and the Terriers finished tied for third in the standings, the highest regular-season finished in program history under Roos. Wofford remained stout at home, posting a 9-2 clip in the Jerry Richardson Indoor Stadium. Three Terriers garnered All-Southern Conference recognition, with Sarah Barham and Emily Hodsdon being selected to the Second Team and Sarah MacLean earning an All-Freshman nod. MacLean led the league in hitting percentage at .320. Barham set a single-season program record for blocks with 138 in the campaign. Hodsdon was the team's assist leader, finishing with 1,149. As a team, Wofford ranked second in the conference in blocks per set (2.23), hitting percentage (.214), assists (1,313), kills (1,443) and blocks (259).

In the 2020-21 adjusted season, due to result of the COVID-19 pandemic, Wofford finished 10-7 overall and 10-6 in the Southern Conference, matching a program record for conference wins (10) set by Roos' 2017 squad. Despite the challenges of COVID-19 postponing and/or canceling matches around the league and country, the Terriers continued its dominance in Jerry Richardson indoor Stadium, compiling a 7-1 mark at home in competing a conference-only schedule. Additionally, the Terriers matched its highest seeding for the Southern Conference Championships, slotted as the No. 4 seed, though, coming up just short to top-seeded Samford in the semifinals at the Pete Hanna Center in Birmingham, Ala. - the site of the 2020-21 SoCon Championships. Under Roos' guidance, Wofford tallied four All-SoCon honors for the first time since 2016, as Riley Coonan (First Team), Sarah Barham (Second Team, All-Freshman) and Emily Hodsdon (All-Freshman) nabbed all-conference recognition for the 2020-21 season. Barham led the league with a .357 hitting percentage, as Coonan finished third in the conference for the category (.313) while Hodsdon also finished third in the SoCon for assists (9.88/s). Additionally, Coonan, who finished her Wofford career fifth all-time in program history for blocks (314) and led the team in kills (181), marked the first Terrier to garner AVCA East Coast All-Region Honorable Mention accolades, in addition to being named to the All-SoCon Tournament Team. As a team, Roos led the Terriers to lead the SoCon in blocks (2.42/s), while finishing second in the conference for opponent hitting percentage (.173).

In 2019, Wofford was 15-16 overall, going 8-8 in a competitive Southern Conference. The Terriers were dominant at home, going 10-2 at Jerry Richardson Indoor Stadium, the site of the 2019 SoCon Championship. Wofford earned the No. 4 seed for the SoCon Championship, falling in the quarterfinals. Roos and her staff coached three all-conference players in Riley Coonan, Catie Cronister and Megan Yaffa. Cronister, the program's all-time leader in kills with 1,735, sent home 390 to go with a career-high 49 assists en route to All-SoCon Second Team Honors. Coonan, also a member of the All-SoCon Second Team, led the league in hitting percentage (.360) and blocks per set (1.18) while sending home 269 kills. Yaffa, a redshirt freshman, ranked third on the team with 250 kills, 39.0 blocks and 37 aces, being named to the All-Freshman squad.

WOFFORD YEAR-BY-YEAR		OVERALL		CONF.		OVERALL
YEAR	SCHOOL	W	L	W	L	W/L%
2015	Wofford	16	18	7	9	.471
2016	Wofford	17	15	9	7	.531
2017	Wofford*	22	11	10	6	.667
2018	Wofford	14	16	7	9	.467
2019	Wofford	15	16	8	8	.484
2020-21	Wofford%	10	7	10	6	.588
2021	Wofford*	17	14	9	7	.548
2022	Wofford	16	13	8	8	.552
TOTAL		127	110	68	60	.536

* - SoCon Tournament Runner-Up % - COVID-19 Season

In 2018, the Terriers grabbed the No. 5 seed in the Southern Conference tournament, finishing the regular season 14-16 overall, going 7-9 in conference play. Wofford was extremely tough at home, posting a record of 8-2 overall, going 6-2 in conference play. Roos' fourth season marked the inaugural Wofford Invitational on the main court in Jerry Richardson Indoor Stadium in which the Terriers defeated Gardner-Webb and Middle Tennessee State. Wofford ranked second in the SoCon in blocks (216) and



HEAD COACH

LYNZE ROOS



service aces per set (1.34), ranking in the top five in digs, kills, assists and hitting percentage. Roos guided a pair of players to milestones in 2018, as Catie Cronister became the program's all-time kills leader (1,345) and Taylor Gill surpassed 1,000 digs in just two seasons at Wofford, totaling 1,176.

In 2017, Roos' third season, Wofford reached unprecedented heights. Roos guided the Terriers, who entered the season having never advanced out of the quarterfinals, to the Southern Conference championship. The team finished the season with a 22-11 record, Wofford's most win in the Division I era, and a 10-6 conference record, also a best in Wofford's DI era. Roos also saw outside hitter Catie Cronister named Co-Player of the Year, while Colleen Reilly joined her on the First-Team for the second straight year and Riley Coonan was honored as an All-Freshman selection.

In her second season, Roos led the Terriers to a 17-15 mark and a 9-7 ledger in Southern Conference play. The nine conference wins were the most by a Wofford team in program history and the 9-7 mark was the first time the Terriers finished conference play with a winning record. Wofford earned a 3-0 sweep over Furman, handing the Paladins their first loss in Alley Gym in two years.

Roos' players also earned many individual accomplishments. For the first time in program history, Wofford had a player named First-Team All-SoCon (Colleen Reilly) and a player named Freshman of the Year (Catie Cronister). Cronister was also a Second Team selection while Kara Shacklette was chosen to the All-Freshman Team, giving Wofford three conference honors for the first time.

In her first season, Roos guided the Terriers to 16 wins – the team's most since 2009 – and a sixth-place finish in the Southern Conference standings – the team's best in its 18 years in the conference. Wofford rolled off five consecutive victories for the first time since 2012, which included a perfect 4-0 record to win the JSU Gamecock Invitational. The Terriers earned 3-0 sweeps over defending Southern Conference Tournament champion Samford and defending regular season champion Furman. The 2015 campaign also witnessed Wofford come back from two sets down to win twice, something the Terriers had not accomplished once since 2009. Wofford put together an 8-2 record through a 10-game stretch in October and finished the season with a 6-3 (.667) record at home, its highest home winning percentage since going 10-4 (.714) in 1992.

Roos' first season also saw some great individual accomplishments. Setter Molly Mayo broke the program's single-season assists record with 1,334, surpassing Rhea DeJesus's previous mark of 1,332 from 2004. Senior libero Jessica Graham posted 605 digs – second-most in program history – and broke the school record for career digs by nearly 300, finishing with 1,921. Freshman Colleen Reilly etched her name in the record books in total blocks (123), block assists (107) and blocks per set (1.05), taking the No. 3 spot in both total blocks and blocks per set, while claiming a new single-season record in block assists. Outside hitter Bella Santoro posted 364 kills to enter Wofford's top-10 for a single season and middle Danni Densford hit .320 to record the second-highest attack percentage in program history. Densford's season also included a match in which she hit .846 (11-0-13) against Alcorn State, which went down as the highest single-match attack percentage in team history (min. 10 kills).

Roos left Lynn University as the most accomplished and winningest coach in program history. Prior to her arrival, Lynn's volleyball program had won only 89 games in 10 years with only one winning season. Roos transformed the program and left with a 164-119 overall mark, 66-78 record in Sunshine State Conference play, eight winning seasons and four NCAA Tournament appearances in nine years.

Lynn had its breakout season in 2007, Roos' second year on the job. The Fighting Knights reached the postseason for the first time in program history, tying what was then the program record with 22 wins. Lynn advanced to the semifinals of the NCAA South Region Tournament with a 3-1 victory over Eckerd before falling 3-2 to top-seeded and second-ranked defending national champions, Tampa, in five sets.

The Blue & White would go on to claim 20 wins in each of the next three seasons while making trips to the NCAA Tournament along the way. Roos' 2008 squad set a record for wins in a season with 24 while the 2010 team, the last to qualify for the postseason, tallied a program-best 11 victories in SSC competition. Roos also owns 66 of the school's 81 conference wins.

Roos has also demonstrated a commitment to academic excellence. For eight straight seasons, the Lynn volleyball team earned American Volleyball Coaches Association Team Academic Award. In 2013-14, the volleyball team posted the highest team GPA out of Lynn's 14 athletic teams with a 3.81 cumulative grade point average.

Prior to Lynn, Roos served as the assistant volleyball coach on the staff of fellow Southern Conference member Samford University for two years. She arrived at Samford after a three-year tenure with Pike High School in Indianapolis, Indiana. At Pike, she was the head volleyball coach and led her team to three top-four finishes in the conference, as well as a sectional final. She also worked with the Pike Youth League, the Pike Fire Volleyball Club, and the Indy Select Volleyball Club from 2001-04 and started the Central Indiana Summer Volleyball League for high school programs.

As a collegian, Roos was an exemplary student-athlete. While an undergraduate student at Butler University, she was named to the dean's list for eight consecutive semesters, was a four-time NCAA District 12 All-Academic Team member and was a member of the Student-Athlete Advisory Board. Roos was named the 2001 Future Educator of the Year by the Butler Secondary Education Department and was selected as one of Butler's Top 100 Seniors.

On the court, Roos was equally impressive. As a freshman, Roos was named to the Midwestern Collegiate Conference All-Newcomer Team. She was also named a second-team all-conference performer in 1998 and 2000 and was picked to the MCC All-Tournament Team in 2000. She ended her playing career in Butler's top 10 in five categories and was named to Butler's Top 25 players in the first 25 years of the program.

Roos graduated from Butler University in 2001 as a double-major in English and education. She married Matt Roos on December 18, 2004. The couple has two children - a son, Loren, and a daughter, Lyle.



2023 ROSTER



NUMERICAL

NO.	PLAYER	POS	HT	CL	HOMETOWN/H.S./PREVIOUS SCHOOL
1	Mary Emily Morgan	OH	6-0	Jr.	Atlanta, Ga. / Westminster HS
2	Emily Normand	OH	5-10	Fr.	Greer, S.C. / St. Joseph's Catholic
3	Sarah MacLean	RS	6-0	Jr.	Simpsonville, S.C. / Hillcrest HS
4	Natalie Arnold	MB/RS	6-0	Fr.	Austin, Texas / Dripping Springs
5	Jessica Freire	DS/L	5-4	So.	Hoschton, Ga. / Mill Creek
6	Sarah Barham	MB	6-1	Sr.	Summerfield, N.C. / Northwest Guilford
7	Bri Mahoney	OH	5-11	Fr.	Aiken, S.C. / Aiken
8	Carson Eubanks	OH	5-9	So.	Lexington, S.C. / River Bluff
9	Caroline Przystup	DS	5-10	So.	Oviedo, Fla. / Oviedo
10	Elise Schneider	DS	6-1	Sr.	Oconomowoc, Wisc. / Arrowhead
11	Laney Klika	L	5-8	Fr.	Novelty, Ohio / Gilmour Academy
12	Ella Schomer	RS	6-1	Fr.	Clarkston, Mich. / Marion
13	Emily Hodsdon	S	5-11	Sr.	Alpharetta, Ga. / Alpharetta
15	Millie Loehr	MH	6-5	Sr.	Durham, N.C. / Durham Academy
16	Taylor Pecht	S	5-9	Fr.	Canton, Ga. / Sequoyah
18	Annemarie Rakoski	MB	6-3	So.	Atlanta, Ga. / St. Pius
20	Abbey Richman	DS/L	5-5	Sr.	Carmel, Ind. / Brebeuf Jesuit Prep
21	Addison Foote	OH	6-0	Sr.	Prospect, Ky. / North Oldham HS / VCU
22	Mad Wilson	RS	6-4	Jr.	Apex, N.C. / Apex Friendship HS

ALPHABETICAL

NO.	PLAYER	POS	HT	CL	HOMETOWN/H.S./PREVIOUS SCHOOL
4	Natalie Arnold	MB/RS	6-0	Fr.	Austin, Texas / Dripping Springs
6	Sarah Barham	MB	6-1	Sr.	Summerfield, N.C. / Northwest Guilford
8	Carson Eubanks	OH	5-9	So.	Lexington, S.C. / River Bluff
21	Addison Foote	OH	6-0	Sr.	Prospect, Ky. / North Oldham HS / VCU
5	Jessica Freire	DS/L	5-4	So.	Hoschton, Ga. / Mill Creek
13	Emily Hodsdon	S	5-11	Sr.	Alpharetta, Ga. / Alpharetta
11	Laney Klika	L	5-8	Fr.	Novelty, Ohio / Gilmour Academy
15	Millie Loehr	MH	6-5	Sr.	Durham, N.C. / Durham Academy
3	Sarah MacLean	RS	6-0	Jr.	Simpsonville, S.C. / Hillcrest HS
7	Bri Mahoney	OH	5-11	Fr.	Aiken, S.C. / Aiken
1	Mary Emily Morgan	OH	6-0	Jr.	Atlanta, Ga. / Westminster HS
2	Emily Normand	OH	5-10	Fr.	Greer, S.C. / St. Joseph's Catholic
16	Taylor Pecht	S	5-9	Fr.	Canton, Ga. / Sequoyah
9	Caroline Przystup	DS	5-10	So.	Oviedo, Fla. / Oviedo
18	Annemarie Rakoski	MB	6-3	So.	Atlanta, Ga. / St. Pius
20	Abbey Richman	DS/L	5-5	Sr.	Carmel, Ind. / Brebeuf Jesuit Prep
10	Elise Schneider	DS	6-1	Sr.	Oconomowoc, Wisc. / Arrowhead
12	Ella Schomer	RS	6-1	Fr.	Clarkston, Mich. / Marion
22	Mad Wilson	RS	6-4	Jr.	Apex, N.C. / Apex Friendship HS

PRONUNCIATION GUIDE:

Jessica FreireFrair (like square) Ella Schomer Show-mer Annemarie Rakoski Ruh-cah-ski
 Caroline Przystup Priz-stup Millie Loehr Low-er Lynze Roos Lynn-ZEE Roose
 Laney Klika Klee-kah Taylor Pecht Paith (like faith) Ladislav Lelkes Lad-e-slav Lell-kesh



THE 2023 TERRIERS



#1
MARY EMILY MORGAN
 CLASS: JUNIOR
 POSITION: OUTSIDE HITTER
 HOMETOWN: ATLANTA, GA.
 HIGH SCHOOL: WESTMINSTER

NOTABLE:

- Named to CofC Classic All-Tournament Team
- Tied career high with three aces against Samford (11/11)
- Tallied first-career double-double with 13 kills, 17 digs against App State (9/2)
- Swatted career-high six blocks at The Citadel (11/2)

SEASON	TEAM	SM-MP	K	K/S	E	TA	PCT	A	A/S	SA	SA/S	SE	DIG	D/S	RE	BS	BA	TB	B/S	BE	BHE	PTS	PTS/S
2021-22	WOF	88-25	171	1.94	92	598	.132	10	0.11	4	0.05	9	171	1.94	31	6	16	22	0.25	2	0	189.0	2.15
2022-23	WOF	88-25	115	1.31	67	441	.109	19	0.22	19	0.22	35	233	2.65	32	4	15	19	0.22	0	1	145.5	1.65
TOTAL		176 - 50	286	1.63	159	1039	.122	29	0.16	23	0.13	44	404	2.30	63	10	31	41	0.23	2	1	334.5	1.90

Single Game Highs

Statistic	Value	
Kills	18	vs Mercer 10/22/21
Attacks	52	vs Mercer 10/22/21
Assists	3	vs Mercer 11/12/22, vs Chattanooga 11/18/22
Serve Aces	3	vs Coastal Carolina 09/09/22, vs Samford 11/11/22
Digs	18	vs Chattanooga 11/18/22
Blocks	6	at The Citadel 11/02/22
Block solos	4	vs Chattanooga 10/15/21
Block assists	6	at The Citadel 11/02/22



#2
EMILY NORMAND
 CLASS: FRESHMAN
 POSITION: OUTSIDE HITTER
 HOMETOWN: GREER, S.C.
 HIGH SCHOOL: ST. JOSEPH'S CATHOLIC

NOTABLE:

- Region Player of the Year (2022)
- Named to AVCA Phenom Watchlist in 2021 and 2022
- Already a starter by age of 16 on her club team, Axis Elite Volleyball
- Finished second in nation at AAUs in Orlando in 2020

THE 2023 TERRIERS



#3 SARAH MacLEAN
CLASS: JUNIOR
POSITION: RIGHT SIDE
HOMETOWN: SIMPSONVILLE, S.C.
HIGH SCHOOL: HILLCREST

NOTABLE:

- Averaged 1.74 kills per set in 2022 (179 kills, 103 sets)
- 54 total blocks on the season (0.52 per set)
- Career-high .611 hitting percentage against Samford (11/11)
- 2021 SoCon All-Freshman Team selection

SEASON	TEAM	SM-MP	K	K/S	E	TA	PCT	A	A/S	SA	SA/S	SE	DIG	D/S	RE	BS	BA	TB	B/S	BE	BHE	PTS	PTS/S
2021-22	WOF	65-20	148	2.28	43	328	.320	2	0.03	0	0.00	0	8	0.12	0	6	30	36	0.55	2	0	169.0	2.60
2022-23	WOF	103-29	179	1.74	64	466	.247	5	0.05	0	0.00	0	49	0.48	0	5	49	54	0.52	3	0	208.5	2.02
TOTAL		168 - 49	327	1.95	107	794	.277	7	0.04	0	0.00	0	57	0.34	0	11	79	90	0.54	5	0	377.5	2.25

Single Game Highs

Statistic	Value	
Kills	18	vs Furman 11/20/21
Attacks	32	vs Furman 11/20/21
Assists	1	7 times
Digs	5	at Furman 10/26/22, vs App State 09/02/22
Blocks	7	vs Western Caro. 11/19/21
Block solos	2	vs Western Caro. 11/19/21
Block assists	5	vs Western Caro. 11/19/21, at UNC Greensboro 10/29/22, vs Furman 11/20/21
PCT	.667	vs South Carolina St. 09/16/22



#4 NATALIE ARNOLD
CLASS: FRESHMAN
POSITION: MIDDLE BLOCKER/RIGHT SIDE
HOMETOWN: AUSTIN, TEXAS
HIGH SCHOOL: DRIPPING SPRINGS

NOTABLE:

- State championship in 2022
- District Blocker MVP in 2022
- Won 2020 GJN national championship with her club team, Club Austin Juniors
- Over 250 blocks and 100 aces in high school career

THE 2023 TERRIERS



#5
JESSICA FREIRE
 CLASS: SOPHOMORE
 POSITION: DS/LIBERO
 HOMETOWN: HOSCHTON, Ga.
 HIGH SCHOOL: MILL CREEK

NOTABLE:

- Had an ace in back-to-back appearances against The Citadel (10/5) and at Mercer (10/14)
- Against SC State (9/16), tallied first-career assist and aces (three)
- Made collegiate debut against Morgan State (8/27)

SEASON	TEAM	SM-MP	K	K/S	E	TA	PCT	A	A/S	SA	SA/S	SE	DIG	D/S	RE	BS	BA	TB	B/S	BE	BHE	PTS	PTS/S
2022-23	WOF	8-6	0	0.00	0	0	.000	1	0.13	5	0.63	4	0	0.00	0	0	0	0	0.00	0	0	5.0	0.63
TOTAL		8 - 6	0	0.00	0	0	.000	1	0.13	5	0.63	4	0	0.00	0	0	0	0	0.00	0	0	5.0	0.63

Single Game Highs

Statistic	Value	
Assists	1	vs South Carolina St. 09/16/22
Serve Aces	3	vs South Carolina St. 09/16/22



#6
SARAH BARHAM
 CLASS: SENIOR
 POSITION: MIDDLE BLOCKER
 HOMETOWN: SUMMERFIELD, N.C.
 HIGH SCHOOL: NORTHWEST GUILFORD

NOTABLE:

- Led SoCon in blocks per set (1.11) in 2022, second in blocks (123)
- .333 hitting percentage ranked second in SoCon
- Became eighth Terrier all-time with 300 career blocks at UNCG (10/29)
- 2022 All-SoCon Second Team

SEASON	TEAM	SM-MP	K	K/S	E	TA	PCT	A	A/S	SA	SA/S	SE	DIG	D/S	RE	BS	BA	TB	B/S	BE	BHE	PTS	PTS/S
2020-21	WOF	65-17	162	2.49	40	342	.357	1	0.02	5	0.08	13	27	0.42	0	21	42	63	0.97	3	2	209.0	3.22
2021-22	WOF	115-31	260	2.26	95	587	.281	13	0.11	15	0.13	26	35	0.30	1	48	90	138	1.20	6	3	368.0	3.20
2022-23	WOF	111-29	251	2.26	72	537	.333	8	0.07	10	0.09	20	55	0.50	0	37	86	123	1.11	11	1	341.0	3.07
TOTAL		291 - 77	673	2.31	207	1466	.318	22	0.08	30	0.10	59	117	0.40	1	106	218	324	1.11	20	6	918.0	3.15

Single Game Highs

Statistic	Value	
Kills	16	vs The Citadel 10/27/21, at Western Caro. 03/25/21, vs Western Caro. 10/09/21
Attacks	38	at Western Caro. 03/25/21
Assists	2	at UNC Greensboro 11/06/21, vs Furman 09/28/22, vs Chattanooga 10/15/21
Serve Aces	5	vs North Ala. 09/12/21
Digs	8	at Col. of Charleston 09/10/22
Blocks	13	at Mercer 03/07/21
Block solos	5	vs USC Upstate 09/03/22
Block assists	11	at Mercer 03/07/21

THE 2023 TERRIERS



#7 **BRI MAHONEY**
CLASS: FRESHMAN
POSITION: OUTSIDE HITTER
HOMETOWN: AIKEN, S.C.
HIGH SCHOOL: AIKEN

NOTABLE:

- Four-time all-region player
- 2022 state championship with 40-2 record
- Region 4-AAAA Player of the Year in 2022 following Region 5-AAAA Player of the Year in 2021
- Two-time Academic All-American



#8 **CARSON EUBANKS**
CLASS: SOPHOMORE
POSITION: OUTSIDE HITTER
HOMETOWN: LEXINGTON, S.C.
HIGH SCHOOL: RIVER BLUFF

NOTABLE:

- Made debut against SC State (9/16), recorded first-career assist and digs
- AVCA All-Region Team in 2021 alongside team MVP honors

SEASON	TEAM	SM-MP	K	K/S	E	TA	PCT	A	A/S	SA	SA/S	SE	DIG	D/S	RE	BS	BA	TB	B/S	BE	BHE	PTS	PTS/S
2022-23	WOF	4-2	0	0.00	1	2	-.500	1	0.25	0	0.00	1	6	1.50	1	0	0	0	0.00	0	0	0.0	0.00
TOTAL		4 - 2	0	0.00	1	2	-.500	1	0.25	0	0.00	1	6	1.50	1	0	0	0	0.00	0	0	0.0	0.00

Single Game Highs

Statistic	Value	
Attacks	2	at Mercer 10/14/22
Assists	1	vs South Carolina St. 09/16/22
Digs	4	vs South Carolina St. 09/16/22
PCT	-.500	at Mercer 10/14/22

THE 2023 TERRIERS



#9
CAROLINE PRZYSTUP
 CLASS: SOPHOMORE
 POSITION: DEFENSIVE SPECIALIST
 HOMETOWN: OVIEDO, Fla.
 HIGH SCHOOL: OVIEDO

NOTABLE:

- Had 17 aces (0.22 per set)
- Served a career-high four aces twice, against Morgan State (8/27) and Mercer (10/14)
- Recorded first aces and assist against Morgan State (8/27)
- Made collegiate debut against Syracuse (8/27)

SEASON	TEAM	SM-MP	K	K/S	E	TA	PCT	A	A/S	SA	SA/S	SE	DIG	D/S	RE	BS	BA	TB	B/S	BE	BHE	PTS	PTS/S
2022-23	WOF	78-23	7	0.09	7	64	.000	6	0.08	17	0.22	23	126	1.62	11	0	0	0	0.00	0	0	24.0	0.31
TOTAL		78 - 23	7	0.09	7	64	.000	6	0.08	17	0.22	23	126	1.62	11	0	0	0	0.00	0	0	24.0	0.31

Single Game Highs

Statistic	Value	
Kills	1	7 times
Attacks	12	vs App State 09/02/22
Assists	1	6 times
Serve Aces	4	vs Morgan St. 08/27/22, at Mercer 10/14/22
Digs	11	vs App State 09/02/22
PCT	.333	vs Chattanooga 10/21/22, vs UIW 09/10/22, at Col. of Charleston 09/10/22



#10
ELISE SCHNEIDER
 CLASS: SENIOR
 POSITION: DEFENSIVE SPECIALIST
 HOMETOWN: OCONOMOWOC, Wisc.
 HIGH SCHOOL: ARROWHEAD

NOTABLE:

- Did not see action in 2021 or 2022 due to injury
- Made appearances in six matches in 2020-21
- Totaled eight digs, five kills and two blocks in 20-21

SEASON	TEAM	SM-MP	K	K/S	E	TA	PCT	A	A/S	SA	SA/S	SE	DIG	D/S	RE	BS	BA	TB	B/S	BE	BHE	PTS	PTS/S
2020-21	WOF	10-6	5	0.50	3	16	.125	0	0.00	0	0.00	3	8	0.80	2	0	2	2	0.20	0	0	6.0	0.60
TOTAL		10 - 6	5	0.50	3	16	.125	0	0.00	0	0.00	3	8	0.80	2	0	2	2	0.20	0	0	6.0	0.60

Single Game Highs

Statistic	Value	
Kills	3	at Western Caro. 03/25/21
Attacks	8	at Western Caro. 03/25/21
Digs	4	at Western Caro. 03/25/21
Blocks	1	vs The Citadel 02/28/21
Block assists	1	at UNC Greensboro 03/15/21, vs The Citadel 02/28/21

THE 2023 TERRIERS



#11
CLASS: FRESHMAN
POSITION: LIBERO
HOMETOWN: NOVELTY, OHIO
HIGH SCHOOL: GILMOUR ACADEMY

NOTABLE:

- Back-to-back state titles in 2020 and 2021
- 1,656 career digs and 227 aces
- Second-Team All-Ohio
- Participated in the OHSVCA ALL-State All-Star Game
- AVCA All-American Watchlist



#12
CLASS: FRESHMAN
POSITION: RIGHT SIDE
HOMETOWN: CLARKSTON, Mich.
HIGH SCHOOL: MARIAN

NOTABLE:

- Back-to-back state titles in 2020 and 2021
- Two-time All-State, three-time All-Region
- Miss Volleyball candidate
- Four-time AVCA Phenom and an AVCA All-American
- 703 career kills on a .416 hitting clip

THE 2023 TERRIERS



#13
EMILY HODSDON
 CLASS: SENIOR
 POSITION: SETTER
 HOMETOWN: ALPHARETTA, Ga.
 HIGH SCHOOL: ALPHARETTA

NOTABLE:

- Six double-doubles in 2022 (22 for career); last vs. UTC (10/21)
- Nine double-doubles in 2021 (led team)
- 8th all-time in assists at Wofford (2,193 for career)
- Became 10th Terrier ever to eclipse 1,000 assists in win over George Mason (9/18/21)

SEASON TEAM	SM-MP	K	K/S	E	TA	PCT	A	A/S	SA	SA/S	SE	DIG	D/S	RE	BS	BA	TB	B/S	BE	BHE	PTS	PTS/S
2020-21 WOF	65-17	28	0.43	8	105	.190	642	9.88	24	0.37	7	152	2.34	1	1	22	23	0.35	0	4	64.0	0.98
2021-22 WOF	116-31	57	0.49	13	214	.206	1149	9.91	38	0.33	15	239	2.06	0	5	47	52	0.45	2	12	123.5	1.06
2022-23 WOF	77-22	5	0.06	7	50	-.040	402	5.22	20	0.26	10	142	1.84	0	0	2	2	0.03	2	14	26.0	0.34
TOTAL	258 - 70	90	0.35	28	369	.168	2193	8.50	82	0.32	32	533	2.07	1	6	71	77	0.30	4	30	213.5	0.83

Single Game Highs

Statistic	Value	
Kills	5	vs Gardner-Webb 09/11/21, at ETSU 11/12/21, at Western Caro. 02/24/21
Attacks	15	at Samford 04/02/21, at ETSU 11/12/21
Assists	63	vs Stony Brook 08/27/21
Serve Aces	6	vs North Ala. 09/12/21
Digs	18	at UNC Greensboro 11/06/21
Blocks	4	5 times
Block solos	1	6 times
Block assists	4	5 times



#15
MILLIE LOEHR
 CLASS: SENIOR
 POSITION: MIDDLE HITTER
 HOMETOWN: DURHAM, N.C.
 HIGH SCHOOL: DURHAM ACADEMY

NOTABLE:

- Career-high four aces against Samford (11/11)
- Led SoCon with .391 hitting percentage (25th nationally)
- That hitting clip set a Wofford single-season program record
- 2022 Second-Team All-SoCon
- Tied career-high 16 kills against Mercer (11/12) and PC (9/17)

SEASON TEAM	SM-MP	K	K/S	E	TA	PCT	A	A/S	SA	SA/S	SE	DIG	D/S	RE	BS	BA	TB	B/S	BE	BHE	PTS	PTS/S
2020-21 WOF	59-17	74	1.25	27	208	.226	3	0.05	0	0.00	0	18	0.31	0	15	27	42	0.71	1	0	102.5	1.74
2021-22 WOF	27-13	45	1.67	11	92	.370	1	0.04	0	0.00	0	2	0.07	0	4	9	13	0.48	1	0	53.5	1.98
2022-23 WOF	102-29	242	2.37	50	491	.391	4	0.04	8	0.08	10	25	0.25	0	22	57	79	0.77	11	0	300.5	2.95
TOTAL	188 - 59	361	1.92	88	791	.345	8	0.04	8	0.04	10	45	0.24	0	41	93	134	0.71	13	0	456.5	2.43

Single Game Highs

Statistic	Value	
Kills	16	vs App State 09/02/22, vs Presbyterian 09/17/22, vs Mercer 11/12/22
Attacks	31	vs Chattanooga 10/21/22
Assists	2	at Furman 10/26/22
Serve Aces	4	vs Samford 11/11/22
Digs	4	vs Furman 09/28/22
Blocks	7	at Furman 10/26/22, at Samford 02/14/21
Block solos	3	at Samford 02/14/21, at ETSU 09/23/22
Block assists	6	at Mercer 03/07/21

THE 2023 TERRIERS



#16 **TAYLOR PECHT**
CLASS: FRESHMAN
POSITION: SETTER
HOMETOWN: CANTON, Ga.
HIGH SCHOOL: SEQUOYAH

NOTABLE:

- First-Team MaxPreps All-American
- Back-to-back County Player of the Year in 2021-22
- 6A Region Player of the Year in 2022
- Won county and region titles all four year and finished as state runners-up three times



#18 **ANNEMARIE RAKOSKI**
CLASS: SOPHOMORE
POSITION: MIDDLE BLOCKER
HOMETOWN: ATLANTA, Ga.
HIGH SCHOOL: ST. PIUS

NOTABLE:

- Recorded career-high seven kills vs. SC State (9/16)
- Swatted career-best four blocks at Mercer (10/14) on her birthday
- Made debut against Charlotte (8/26) and recorded first kill and blocks

SEASON	TEAM	SM-MP	K	K/S	E	TA	PCT	A	A/S	SA	SA/S	SE	DIG	D/S	RE	BS	BA	TB	B/S	BE	BHE	PTS	PTS/S
2022-23	WOF	22-14	20	0.91	4	54	.296	0	0.00	0	0.00	0	8	0.36	0	6	7	13	0.59	0	0	29.5	1.34
TOTAL		22 - 14	20	0.91	4	54	.296	0	0.00	0	0.00	0	8	0.36	0	6	7	13	0.59	0	0	29.5	1.34

Single Game Highs

Statistic	Value	
Kills	7	vs South Carolina St. 09/16/22
Attacks	15	vs App State 09/02/22
Digs	3	vs Syracuse 08/27/22
Blocks	4	at Mercer 10/14/22
Block solos	3	at Mercer 10/14/22
Block assists	2	at Charlotte 08/26/22
PCT	1.000	vs Furman 09/28/22, at Furman 10/26/22

THE 2023 TERRIERS



#20
CLASS: SENIOR
POSITION: DS/LIBERO
HOMETOWN: CARMEL, Ind.
HIGH SCHOOL: BREBEUF JESUIT PREP

NOTABLE:

- Tied career high with six assists against Furman (9/28)
- Notched double-digit digs 21 times this season, all consecutively
- Seventh in SoCon in 2022 with 389 total digs
- Landed career-best three aces at Western Carolina (11/5/21)

SEASON	TEAM	SM-MP	K	K/S	E	TA	PCT	A	A/S	SA	SA/S	SE	DIG	D/S	RE	BS	BA	TB	B/S	BE	BHE	PTS	PTS/S
2020-21	WOF	65-17	1	0.02	0	9	.111	43	0.66	13	0.20	19	283	4.35	19	0	1	1	0.02	1	0	14.5	0.22
2021-22	WOF	72-22	1	0.01	1	3	.000	29	0.40	15	0.21	19	150	2.08	22	0	0	0	0.00	0	0	16.0	0.22
2022-23	WOF	102-29	2	0.02	1	26	.038	67	0.66	28	0.27	37	389	3.81	23	0	0	0	0.00	0	1	30.0	0.29
TOTAL		239 - 68	4	0.02	2	38	.053	139	0.58	56	0.23	75	822	3.44	64	0	1	1	0.00	1	1	60.5	0.25

Single Game Highs

Statistic	Value	
Kills	1	vs Furman 03/21/21, vs Chattanooga 10/21/22, vs ETSU 10/16/21, at Charlotte 08/26/22
Attacks	5	at Mercer 10/14/22
Assists	6	vs North Ala. 09/12/21, vs Furman 09/28/22, at Samford 04/02/21
Serve Aces	3	at Western Caro. 11/05/21
Digs	32	at Western Caro. 02/24/21
Blocks	1	at Samford 02/14/21
Block assists	1	at Samford 02/14/21
PCT	1.000	at Charlotte 08/26/22



#21
CLASS: SENIOR
POSITION: OUTSIDE HITTER
HOMETOWN: PROSPECT, Ky.
HIGH SCHOOL: NORTH OLDHAM HS

NOTABLE:

- Played freshman season at VCU in 2020-21
- Scooped double-digit digs twice last season
- Started three matches last season

SEASON	TEAM	SM-MP	K	K/S	E	TA	PCT	A	A/S	SA	SA/S	SE	DIG	D/S	RE	BS	BA	TB	B/S	BE	BHE	PTS	PTS/S
2020-21	VCU	26-11	9	0.35	9	45	.000	1	0.04	0	0.00	1	27	1.04	2	0	4	4	0.15	0	0	11.0	0.42
2021-22	WOF	97-28	130	1.34	76	459	.118	22	0.23	16	0.16	30	203	2.09	30	1	12	13	0.13	1	1	153.0	1.58
2022-23	WOF	29-11	30	1.03	17	111	.117	5	0.17	6	0.21	12	51	1.76	7	1	5	6	0.21	0	0	39.5	1.36
TOTAL FOR WOF		126 - 39	160	1.27	93	570	.118	27	0.21	22	0.17	42	254	2.02	37	2	17	19	0.15	1	1	192.5	1.53
TOTAL		152 - 50	169	1.11	102	615	.109	28	0.18	22	0.14	43	281	1.85	39	2	21	23	0.15	1	1	203.5	1.34

Single Game Highs

Statistic	Value	
Kills	13	vs East Carolina 09/03/21, vs North Ala. 09/12/21, at Fla. Atlantic 08/28/21
Attacks	42	vs Furman 09/22/21
Assists	3	vs Furman 09/22/21
Serve Aces	3	vs Western Caro. 11/19/21
Digs	19	vs Furman 09/22/21
Blocks	2	5 times
Block solos	1	at Samford 09/24/21, at ETSU 09/23/22
Block assists	3	at Davidson 02/27/21

THE 2023 TERRIERS



#22 **MAD WILSON**
CLASS: JUNIOR
POSITION: RIGHT SIDE
HOMETOWN: APEX, N.C.
HIGH SCHOOL: APEX FRIENDSHIP

NOTABLE:

- Did not play in 2022 due to injury
- Recorded first-career kills against SC State (9/11/21)

SEASON	TEAM	SM-MP	K	K/S	E	TA	PCT	A	A/S	SA	SA/S	SE	DIG	D/S	RE	BS	BA	TB	B/S	BE	BHE	PTS	PTS/S
2021-22	WOF	2-2	2	1.00	1	5	.200	0	0.00	0	0.00	0	1	0.50	0	0	0	0	0.00	0	0	2.0	1.00
TOTAL		2 - 2	2	1.00	1	5	.200	0	0.00	0	0.00	0	1	0.50	0	0	0	0	0.00	0	0	2.0	1.00

Single Game Highs

Statistic	Value	
Kills	2	vs South Carolina St. 09/11/21
Attacks	5	vs South Carolina St. 09/11/21
Digs	1	vs South Carolina St. 09/11/21

TV/RADIO CHART



#1 MARY EMILY MORGAN
JR. • OH • 6-0
ATLANTA, GA.
WESTMINSTER HS



#2 EMILY NORMAND
FR. • OH • 5-10
GREER, S.C.
ST. JOSEPH'S CATHOLIC



#3 SARAH MACLEAN
JR. • RS • 6-0
SIMPSONVILLE, S.C.
HILLCREST HS



#4 NATALIE ARNOLD
FR. • MB/RS • 6-0
AUSTIN, TEXAS
DRIPPING SPRINGS



#5 JESSICA FREIRE
SO. • DS/L • 5-4
HOSCHTON, GA.
MILL CREEK HS



#6 SARAH BARHAM
SR. • MB • 6-1
SUMMERFIELD, N.C.
NORTHWEST GUILFORD



#7 BRI MAHONEY
FR. • OH • 5-11
AIKEN, S.C.
AIKEN



#8 CARSON EUBANKS
SO. • OH • 5-9
LEXINGTON, S.C.
RIVER BLUFF HS



#9 CAROLINE PRZYSTUP
SO. • DS • 5-10
OVIEDO, FLA.
OVIEDO HS



#10 ELISE SCHNEIDER
SR. • DS • 6-1
OCONOMOWOC, WISC.
ARROWHEAD HS



#11 LANEY KLIKA
FR. • L • 5-8
NOVELTY, OHIO
GILMOUR ACADEMY



#12 ELLA SCHOMER
FR. • RS • 6-1
CLARKSTON, MICH.
MARIAN



#13 EMILY HODSDON
SR. • S • 5-11
ALPHARETTA, GA.
ALPHARETTA HS



#15 MILLIE LOEHR
SR. • MH • 6-5
DURHAM, N.C.
DURHAM ACADEMY



#16 TAYLOR PECHT
FR. • S • 5-9
CANTON, GA.
SEQUOYAH



#18 ANNEMARIE RAKOSKI
SO. • MB • 6-3
ATLANTA, GA.
ST. PIUS HS



#20 ABBEY RICHMAN
SR. • DS/L • 5-5
CARMEL, IND.
BREBEUF JESUIT PREP



#21 ADDISON FOOTE
SR. • OH • 6-0
PROSPECT, KY.
NORTH OLDHAM / VCU



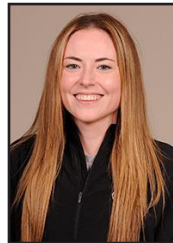
#22 MAD WILSON
JR. • RS • 6-4
APEX, N.C.
APEX FRIENDSHIP HS



LYNZE ROOS
HEAD COACH
NINTH SEASON
BUTLER '01



LADISLAV LELKES
ASSOCIATE HEAD
COACH
FIRST SEASON



SHANNAH CARTER
ASSISTANT COACH
FIRST SEASON
UW-STEVENS POINT '19



ALLISON WHITTEN
ASSISTANT COACH
FIRST SEASON
MOREHEAD STATE '22



INDIVIDUAL MATCH LEADERS (2022)

DATE	OPPONENT	W/L	KILLS	ASSISTS	ACES	BLOCKS	DIGS	POINTS
8/26	at Charlotte	L, 1-3	Barham (15)	Hodsdon (27)	Hodsdon/Zeman (2)	Barham (5)	Brown (19)	Barham (18)
8/27	vs. Syracuse	L, 2-3	Zeman (16)	Hodsdon (43)	Hodsdon (3)	Barham (5)	Foote (16)	Zeman (16.5)
8/27	vs. Morgan State	W, 3-0	Barham (11)	Hodsdon (37)	Przystup (4)	Barham/MacLean (4)	Foote (10)	Barham (13.5)
9/2	vs. Eastern Kentucky	L, 1-3	Barham (15)	Hodsdon (38)	Barham/Foote (2)	Barham (5)	Hodsdon (13)	Barham (21)
9/2	vs. App State	L, 2-3	Zeman (17)	Hensley (28)	Hensley (3)	Barham (4)	Brown (20)	Zeman (17.5)
9/3	vs. USC Upstate	W, 3-0	Zeman (13)	Hodsdon (21)	Hodsdon (1)	Barham (8)	Morgan (17)	Zeman (14.5)
9/9	vs. Coastal Carolina	W, 3-2	Zeman (13)	Hensley (24)	Morgan (3)	Loehr (4)	Brown (21)	Morgan/Zeman (14)
9/10	at Col. of Charleston	W, 3-0	Barham (11)	Hensley (19)	Brown (3)	Loehr (6)	Morgan (10)	Barham (14)
9/10	vs. Incarnate Word	W, 3-0	Barham/Zeman (9)	Hensley (15)	Morgan (2)	Barham (4)	Richman (15)	Barham (11.5)
9/16	vs. SC State	W, 3-0	Rakoski/Smith (7)	Hensley (17)	Hensley (4)	Rakoski (2)	Richman (12)	Rakoski (8.5)
9/16	vs. Georgia State	W, 3-0	Zeman (20)	Hensley (26)	Hodsdon (3)	Zeman (3)	Richman (16)	Zeman (23)
9/17	vs. Presbyterian	W, 3-1	Loehr/Zeman (16)	Hensley (27)	Richman (2)	Barham (4)	Richman (12)	Loehr/Zeman (17.5)
9/23	at ETSU	L, 1-3	Zeman (11)	Hensley (20)	4 tied (1)	Barham (5)	Richman (14)	Loehr (11.5)
9/24	at Chattanooga	L, 0-3	Smith/Zeman (10)	Hensley (26)	Richman (2)	Loehr (6)	Richman (13)	Loehr/Smith/Zeman (10.5)
9/28	vs. Furman	W, 3-2	Smith (16)	Hensley (35)	Richman (2)	Barham (6)	Richman (14)	Smith (17.5)
10/1	vs. Western Carolina	W, 3-0	Smith/Zeman (13)	Hensley (43)	Richman (2)	Barham (5)	Richman (19)	Barham/Smith/Zeman (13)
10/2	vs. UNCG	W, 3-0	Smith (12)	Hensley (44)	Barham (3)	Loehr (3)	Richman (15)	Loehr (12.5)
10/5	vs. The Citadel	W, 3-0	Smith (15)	Hensley (34)	Morgan/Przystup (2)	Barham (3)	Richman (12)	Smith (15)
10/14	at Mercer	L, 2-3	Smith (14)	Hensley (40)	Przystup (4)	Rakoski (4)	Richman (22)	Smith (16.5)
10/15	at Samford	L, 1-3	Zeman (11)	Hensley (18)	Richman/Smith (2)	Barham (5)	Richman (13)	Zeman (11.5)
10/21	vs. Chattanooga	L, 2-3	Zeman (18)	Hensley (31)	Hensley/Loehr (2)	Barham (3)	Richman (30)	Zeman (18)
10/22	vs. ETSU	L, 1-3	Zeman (11)	Hensley (29)	5 tied (1)	Wyatt (7)	Richman (20)	Barham (13)
10/16	at Furman	W, 3-2	Smith (16)	Hensley (35)	Hensley (3)	Loehr (7)	Richman (27)	Smith (17)
10/28	at Western Carolina	L, 1-3	Loehr/MacLean/Zeman (10)	Hensley (33)	Richman (2)	Barham/Loehr (5)	Richman (17)	Loehr (13.5)
10/29	at UNCG	W, 3-0	Loehr (10)	Hensley (33)	Hensley/Richman (2)	Barham (8)	Richman (16)	Loehr (11.5)
11/2	at The Citadel	W, 3-0	MacLean (9)	Hensley (32)	Hensley (3)	Morgan (6)	Richman (18)	MacLean (10.5)
11/11	vs. Samford	W, 3-1	MacLean/Zeman (11)	Hensley (36)	Loehr (4)	Barham (6)	Richman (18)	Loehr (15)
11/12	vs. Mercer	L, 2-3	Loehr (16)	Hensley (37)	Hensley (3)	Barham (4)	Richman (19)	Loehr (16.5)
11/18	vs. Chattanooga	L, 2-3	Morgan (14)	Hensley (52)	Brown (2)	Loehr (5)	Richman (24)	Morgan (15.5)



ABBIE RICHMAN HAS LED THE TEAM IN DIGS IN 21-STRAIGHT MATCHES. HER 30 VS. UTC ARE A SINGLE-MATCH HIGH FOR THE TERRIERS IN 2022.



SARAH BARHAM LED THE TEAM IN BLOCKS IN 18 MATCHES LAST SEASON. HER EIGHT (TWICE) ARE A WOFFORD MATCH HIGH LAST SEASON.

2022 COMBINED STATS

Game Records

Overall	Conference	Home	Away	Neutral
16 - 13	8 - 8	9 - 5	4 - 6	3 - 2

Team Box Score

#	Player	SP	Attack				Set		Serve			RE	Dig		Blocking				PTS			
			K	K/S	E	TA	PCT	A	A/S	SA	SE		SA/S	DIG	DIG/S	BS	BA	TOT/S		BLK/S	BE	BHE
1	Morgan, Mary Emily	88	115	1.31	67	441	.109	19	0.22	19	35	0.22	32	233	2.65	4	15	19	0.22	0	1	145.5
2	Wyatt, Emory	35	50	1.43	25	132	.189	0	0.00	0	0	0.00	0	16	0.46	4	20	24	0.69	3	0	64.0
3	MacLean, Sarah	103	179	1.74	64	466	.247	5	0.05	0	0	0.00	0	49	0.48	5	49	54	0.52	3	0	208.5
4	Sharpe, Chasidy	47	0	0.00	0	0	.000	1	0.02	3	3	0.06	2	5	0.11	0	0	0	0.00	0	0	3.0
5	Freire, Jessica	8	0	0.00	0	0	.000	1	0.13	5	4	0.63	0	0	0.00	0	0	0	0.00	0	0	5.0
6	Barham, Sarah	111	251	2.26	72	537	.333	8	0.07	10	20	0.09	0	55	0.50	37	86	123	1.11	11	1	341.0
7	Smith, Kennedy	97	202	2.08	99	671	.154	12	0.12	7	11	0.07	13	220	2.27	10	25	35	0.36	2	2	231.5
8	Eubanks, Carson	4	0	0.00	1	2	-.500	1	0.25	0	1	0.00	1	6	1.50	0	0	0	0.00	0	0	0.0
9	Przystup, Caroline	78	7	0.09	7	64	.000	6	0.08	17	23	0.22	11	126	1.62	0	0	0	0.00	0	0	24.0
11	Brown, Kaitlyn	66	2	0.03	1	21	.048	31	0.47	12	13	0.18	15	157	2.38	0	0	0	0.00	0	0	14.0
12	Zeman, Bella	108	314	2.91	127	838	.223	7	0.06	3	3	0.03	4	70	0.65	9	25	34	0.31	4	2	338.5
13	Hodsdon, Emily	77	5	0.06	7	50	-.040	402	5.22	20	10	0.26	0	142	1.84	0	2	2	0.03	2	14	26.0
15	Loehr, Millie	102	242	2.37	50	491	.391	4	0.04	8	10	0.08	0	25	0.25	22	57	79	0.77	11	0	300.5
16	Yaffa, Meghan	6	4	0.67	7	14	-.214	0	0.00	0	0	0.00	0	1	0.17	0	1	1	0.17	0	0	4.5
17	Hensley, Victoria	104	37	0.36	5	85	.376	778	7.48	33	39	0.32	0	212	2.04	3	10	13	0.13	6	10	78.0
18	Rakoski, Annemarie	22	20	0.91	4	54	.296	0	0.00	0	0	0.00	0	8	0.36	6	7	13	0.59	0	0	29.5
20	Richman, Abbey	102	2	0.02	1	26	.038	67	0.66	28	37	0.27	23	389	3.81	0	0	0	0.00	0	1	30.0
21	Foote, Addison	29	30	1.03	17	111	.117	5	0.17	6	12	0.21	7	51	1.76	1	5	6	0.21	0	0	39.5
23	Bertsch, Alexa	7	10	1.43	7	28	.107	0	0.00	0	1	0.00	2	3	0.43	0	1	1	0.14	0	0	10.5
WOFFORD		113	1470	13.01	561	4031	.226	1347	11.92	171	222	1.51	158	1768	15.65	101	303	252.5	2.23	42	31	1,893.5
Opponents		113	1312	11.61	597	3937	.182	1179	10.43	158	201	1.40	171	1724	15.26	107	208	211	1.87	33	21	1,681.0

Team statistics

	WOF	OPP
ATTACK		
Kills	1470	1312
Errors	561	597
Total Attacks	4031	3937
Attack Pct	.226	.182
Kills/Set	13.01	11.61
SET		
Assists	1347	1179
Attempts	4049	3970
Assist Pct	.333	.297
Assists/Set	11.92	10.43
SERVE		
Aces	171	158
Errors	222	201
Attempts	2498	2345
Serve Pct	.911	.914
Aces/Set	1.51	1.40
SERVE RECEPTIONS		
Errors	158	171
Errors/Set	1.40	1.51
Attempts	2144	2276
Reception Pct	.926	.999
DEFENSE		
Digs	1768	1724
Digs/Set	15.65	15.26
BLOCKING		
Block solo	101	107
Block Assist	303	208
Total Blocks	252.5	211
Blocks/Set	2.23	1.87
Block Errors	42	33
Ball handling errors	31	21
ATTENDANCE		
Total	2868	2628
Dates/Avg Per Date	14/205	10/263
Neutral Site #/Avg	5/150	-
Current win streak	0	-
Home win streak	0	-

Team Results

Date	Opponent	Score	Score-by-set	Att.
08/26/2022	at Charlotte	L 1-3	22-25,21-25,25-23,24-26	564
08/27/2022	vs Syracuse	L 2-3	19-25,17-25,25-13,25-17,10-15	0
08/27/2022	vs Morgan St.	W 3-0	25-17,25-17,30-28	0
09/02/2022	Eastern Ky.	L 1-3	17-25,28-26,18-25,20-25	134
09/02/2022	App State	L 2-3	25-20,22-25,23-25,25-18,7-15	213
09/03/2022	USC Upstate	W 3-0	25-22,27-25,25-16	224
09/09/2022	vs Coastal Carolina	W 3-2	17-25,25-20,25-21,16-25,15-8	39
09/10/2022	at Col. of Charleston	W 3-0	25-20,25-17,25-22	152
09/10/2022	vs UIW	W 3-0	25-13,25-17,25-22	61
09/16/2022	South Carolina St.	W 3-0	25-11,25-6,25-7	145
09/16/2022	Georgia St.	W 3-0	25-21,25-22,25-14	212
09/17/2022	Presbyterian	W 3-1	25-22,25-21,12-25,25-16	208
* 09/23/2022	at ETSU	L 1-3	25-21,15-25,21-25,14-25	340
* 09/24/2022	at Chattanooga	L 0-3	22-25,20-25,20-25	245
* 09/28/2022	Furman	W 3-2	25-21,25-16,24-26,16-25,15-7	218
* 10/01/2022	Western Caro.	W 3-0	25-20,25-13,25-22	375
* 10/02/2022	UNC Greensboro	W 3-0	25-19,25-20,25-21	138
* 10/05/2022	The Citadel	W 3-0	25-16,25-13,25-16	163
* 10/14/2022	at Mercer	L 2-3	19-25,25-18,25-18,16-25,10-15	50
* 10/15/2022	at Samford	L 1-3	20-25,25-20,20-25,9-25	215
* 10/21/2022	Chattanooga	L 2-3	21-25,25-20,25-15,17-25,18-20	168
* 10/22/2022	ETSU	L 1-3	28-30,25-14,17-25,25-27	136
* 10/26/2022	at Furman	W 3-2	25-14,22-25,31-29,22-25,15-9	350
* 10/28/2022	at Western Caro.	L 1-3	23-25,25-18,24-26,23-25	332
* 10/29/2022	at UNC Greensboro	W 3-0	25-22,25-20,25-22	257
* 11/02/2022	at The Citadel	W 3-0	25-23,25-22,25-20	123
* 11/11/2022	Samford	W 3-1	25-19,25-15,16-25,25-16	223
* 11/12/2022	Mercer	L 2-3	25-19,25-22,23-25,17-25,10-15	311
11/18/2022	vs Chattanooga	L 2-3	25-21,25-21,25-27,21-25,8-15	652



2022 TEAM MATCH-BY-MATCH

Date	Opponent	SP	Attack				Set			Serve				Receipt			Blocking				BHE	POINTS	SCORE	
			K	E	TA	PCT	A	TA	PCT	SA	SE	TA	PCT	RE	TA	PCT	DIG	BS	BA	BE				TOTAL
08/26/2022	at Charlotte	4	54	29	170	.147	52	174	.299	7	9	93	.903	5	88	.943	70	1	16	1	9.0	0	70.0	1-3
08/27/2022	vs Syracuse	5	58	20	162	.235	53	155	.342	4	6	97	.938	5	84	.940	67	1	12	1	7.0	0	69.0	2-3
08/27/2022	vs Morgan St.	3	46	17	100	.290	43	101	.426	8	7	78	.910	5	56	.911	35	2	10	2	7.0	0	61.0	3-0
09/02/2022	Eastern Ky.	4	49	23	173	.150	45	204	.221	4	7	84	.917	3	96	.969	67	5	8	3	9.0	0	62.0	1-3
09/02/2022	App State	5	70	24	194	.237	61	199	.307	5	8	102	.922	10	98	.898	96	6	4	0	8.0	0	83.0	2-3
09/03/2022	USC Upstate	3	48	15	124	.266	43	123	.350	1	6	75	.920	2	60	.967	65	7	10	0	12.0	0	61.0	3-0
09/09/2022	vs Coastal Carolina	5	57	23	178	.191	52	180	.289	7	10	97	.897	5	93	.946	79	0	14	1	7.0	0	71.0	3-2
09/10/2022	at Col. of Charleston	3	42	15	112	.241	32	110	.291	8	5	73	.932	1	55	.982	51	2	17	0	10.5	2	60.5	3-0
09/10/2022	vs UIW	3	35	10	97	.258	30	104	.288	5	8	73	.890	2	46	.957	45	1	14	3	8.0	2	48.0	3-0
09/16/2022	South Carolina St.	3	35	5	71	.423	34	76	.447	12	9	73	.877	0	19	1.000	48	3	2	0	4.0	1	51.0	3-0
09/16/2022	Georgia St.	3	51	14	111	.333	45	111	.405	6	6	74	.919	4	56	.929	50	6	2	0	7.0	0	64.0	3-0
09/17/2022	Presbyterian	4	58	17	135	.304	54	137	.394	5	7	86	.919	5	81	.938	46	6	4	0	8.0	2	71.0	3-1
09/23/2022	at ETSU	4	39	22	131	.130	39	139	.281	4	7	76	.908	8	83	.904	54	6	8	4	10.0	3	53.0	1-3
09/24/2022	at Chattanooga	3	38	26	124	.097	37	122	.303	4	4	63	.937	4	74	.946	51	3	16	6	11.0	2	53.0	0-3
09/28/2022	Furman	5	66	23	156	.276	62	158	.392	5	12	104	.885	7	91	.923	67	7	8	2	11.0	3	82.0	3-2
10/01/2022	Western Caro.	3	51	20	127	.244	46	122	.377	4	7	74	.905	3	49	.939	63	4	4	1	6.0	1	61.0	3-0
10/02/2022	UNC Greensboro	3	50	11	111	.351	50	108	.463	8	8	74	.892	7	56	.875	45	2	2	1	3.0	0	61.0	3-0
10/05/2022	The Citadel	3	39	9	100	.300	36	103	.350	6	8	74	.892	1	42	.976	51	4	4	1	6.0	3	51.0	3-0
10/14/2022	at Mercer	5	52	22	153	.196	45	148	.304	10	11	96	.885	4	86	.953	64	5	4	1	7.0	1	69.0	2-3
10/15/2022	at Samford	4	40	23	130	.131	38	134	.284	4	5	75	.933	8	83	.904	54	2	16	1	10.0	1	54.0	1-3
10/21/2022	Chattanooga	5	69	29	193	.207	63	188	.335	7	5	106	.953	8	98	.918	89	4	2	1	5.0	1	81.0	2-3
10/22/2022	ETSU	4	58	20	154	.247	53	149	.356	5	11	96	.885	7	89	.921	57	3	18	1	12.0	2	75.0	1-3
10/26/2022	at Furman	5	62	22	199	.201	58	200	.290	9	11	115	.904	7	98	.929	92	2	22	4	13.0	2	84.0	3-2
10/28/2022	at Western Caro.	4	55	32	150	.153	53	152	.349	3	4	96	.958	5	87	.943	66	7	10	0	12.0	0	70.0	1-3
10/29/2022	at UNC Greensboro	3	43	15	114	.246	40	110	.364	4	5	74	.932	6	60	.900	47	3	18	0	12.0	0	59.0	3-0
11/02/2022	at The Citadel	3	38	17	103	.204	35	103	.340	6	7	74	.905	8	57	.860	50	2	18	1	11.0	1	55.0	3-0
11/11/2022	Samford	4	51	13	128	.297	44	120	.367	9	7	90	.922	6	68	.912	61	3	16	6	11.0	2	71.0	3-1
11/12/2022	Mercer	5	51	20	126	.246	43	116	.371	6	13	101	.871	13	86	.849	44	1	10	0	6.0	1	63.0	2-3
11/18/2022	vs Chattanooga	5	65	25	205	.195	61	203	.300	5	9	105	.914	9	105	.914	94	3	14	1	10.0	1	80.0	2-3
Totals		113	1470	561	4031	.226	1347	4049	.333	171	222	2498	.911	158	2144	.926	1768	101	303	42	252.5	31	1893.5	
Opponents		113	1312	597	3937	.182	1179	3970	.297	158	201	2345	.914	171	2276	.925	1724	107	208	33	211.0	21	1681.0	

Team Averages

Sets Played	Kills per set	Assists per set	Service aces per set	Digs per set	Blocks per set	Points per set	Ball handling error per set	Reception errors per set
113	13.01	11.92	1.51	15.65	2.23	16.76	0.27	1.40

2022 OPPONENT MATCH-BY-MATCH

Date	Opponent	SP	Attack				Set			Serve				Receipt			Blocking				BHE	POINTS	SCORE	
			K	E	TA	PCT	A	TA	PCT	SA	SE	TA	PCT	RE	TA	PCT	DIG	BS	BA	BE				TOTAL
08/26/2022	at Charlotte	4	55	21	159	.214	51	158	.323	5	10	98	.898	7	84	.917	70	7	14	2	14.0	0	74.0	1-3
08/27/2022	vsSyracuse	5	64	24	162	.247	59	159	.371	5	10	94	.894	4	91	.956	74	4	12	2	10.0	0	79.0	2-3
08/27/2022	vsMorgan St.	3	32	17	90	.167	31	100	.310	5	8	64	.875	8	71	.887	33	1	12	1	7.0	0	44.0	3-0
09/02/2022	Eastern Ky.	4	60	19	171	.240	40	180	.222	3	4	100	.960	4	77	.948	72	1	6	1	4.0	0	67.0	1-3
09/02/2022	App State	5	58	19	189	.206	52	196	.265	10	5	103	.951	5	94	.947	86	3	4	0	5.0	0	73.0	2-3
09/03/2022	USC Upstate	3	39	22	131	.130	35	135	.259	2	5	65	.923	1	69	.986	57	2	8	0	6.0	0	47.0	3-0
09/09/2022	vsCoastal Carolina	5	60	24	177	.203	51	179	.285	5	7	100	.930	7	87	.920	92	5	10	2	10.0	0	75.0	3-2
09/10/2022	at Col. of Charleston	3	34	19	108	.139	31	108	.287	1	6	61	.902	8	68	.882	51	2	8	0	6.0	0	41.0	3-0
09/10/2022	vsUIW	3	25	20	100	.050	22	115	.191	2	8	54	.852	5	65	.923	42	0	4	0	2.0	2	29.0	3-0
09/16/2022	South Carolina St.	3	8	16	76	-.105	7	84	.083	0	7	26	.731	12	64	.813	26	3	2	0	4.0	2	12.0	3-0
09/16/2022	Georgia St.	3	31	14	102	.167	30	106	.283	4	2	58	.966	6	68	.912	40	6	2	0	7.0	0	42.0	3-0
09/17/2022	Presbyterian	4	51	18	125	.264	47	123	.382	5	4	85	.953	5	79	.937	51	1	4	0	3.0	0	59.0	3-1
09/23/2022	at ETSU	4	55	19	140	.257	51	136	.375	8	12	95	.874	4	69	.942	60	2	12	2	8.0	0	71.0	1-3
09/24/2022	at Chattanooga	3	37	17	111	.180	28	103	.272	4	0	74	1.000	4	59	.932	51	5	10	2	10.0	1	51.0	0-3
09/28/2022	Furman	5	49	28	153	.137	44	156	.282	7	5	96	.948	5	92	.946	58	9	4	1	11.0	1	67.0	3-2
10/01/2022	Western Caro.	3	24	12	109	.110	24	119	.202	3	7	56	.875	4	67	.940	51	7	0	3	7.0	1	34.0	3-0
10/02/2022	UNC Greensboro	3	34	11	95	.242	31	97	.320	7	5	61	.918	8	66	.879	45	4	2	1	5.0	0	46.0	3-0
10/05/2022	The Citadel	3	24	24	104	.000	21	103	.204	1	4	46	.913	6	66	.909	41	3	0	1	3.0	1	28.0	3-0
10/14/2022	at Mercer	5	55	17	144	.264	51	141	.362	4	14	100	.860	10	85	.882	66	4	6	1	7.0	1	66.0	2-3
10/15/2022	at Samford	4	57	18	139	.281	48	133	.361	8	11	94	.883	4	70	.943	56	2	8	1	6.0	0	71.0	1-3
10/21/2022	Chattanooga	5	60	17	178	.242	54	174	.310	8	7	105	.933	7	101	.931	82	8	6	5	11.0	4	79.0	2-3
10/22/2022	ETSU	4	55	25	144	.208	50	141	.355	7	6	95	.937	5	85	.941	69	4	14	3	11.0	1	73.0	1-3
10/26/2022	at Furman	5	58	36	196	.112	56	196	.286	7	4	102	.961	9	104	.913	93	4	14	3	11.0	2	76.0	3-2
10/28/2022	at Western Caro.	4	52	27	151	.166	51	158	.323	5	6	93	.935	3	92	.967	58	7	10	0	12.0	0	69.0	1-3
10/29/2022	at UNC Greensboro	3	38	23	114	.132	36	110	.327	6	5	65	.923	4	69	.942	49	0	8	0	4.0	0	48.0	3-0
11/02/2022	at The Citadel	3	30	20	108	.093	28	105	.267	8	9	66	.864	6	67	.910	43	1	10	0	6.0	0	44.0	3-0
11/11/2022	Samford	4	47	22	134	.187	43	128	.336	6	8	76	.895	9	83	.892	59	0	8	1	4.0	1	57.0	3-1
11/12/2022	Mercer	5</																						

2022 TEAM MATCH HIGHS

ATTACK PERCENT (K-E-TA)	.423	(35 - 5 - 71)		vs South Carolina St. (09/16/2022)
	.351	(50 - 11 - 111)		vs UNC Greensboro (10/02/2022)
	.333	(51 - 14 - 111)		vs Georgia St. (09/16/2022)
	.304	(58 - 17 - 135)		vs Presbyterian (09/17/2022)
	.300	(39 - 9 - 100)		vs The Citadel (10/05/2022)
	.297	(51 - 13 - 128)		vs Samford (11/11/2022)
	.290	(46 - 17 - 100)		vs Morgan St. (N) (08/27/2022)
	.276	(66 - 23 - 156)		vs Furman (09/28/2022)
	.266	(48 - 15 - 124)		vs USC Upstate (09/03/2022)
.258	(35 - 10 - 97)		vs UIW (N) (09/10/2022)	
KILLS (K-E-TA)	70	(70 - 24 - 194)	5s	vs App State (09/02/2022)
	69	(69 - 29 - 193)	5s	vs Chattanooga (10/21/2022)
	66	(66 - 23 - 156)	5s	vs Furman (09/28/2022)
	65	(65 - 25 - 205)	5s	vs Chattanooga (N) (11/18/2022)
	62	(62 - 22 - 199)	5s	at Furman (10/26/2022)
	58	(58 - 20 - 162)	5s	vs Syracuse (N) (08/27/2022)
	58	(58 - 17 - 135)	4s	vs Presbyterian (09/17/2022)
	58	(58 - 20 - 154)	4s	vs ETSU (10/22/2022)
	57	(57 - 23 - 178)	5s	vs Coastal Carolina (N) (09/09/2022)
55	(55 - 32 - 150)	4s	at Western Caro. (10/28/2022)	
KILLS 3-SETS (K-E-TA)	51	(51 - 14 - 111)		vs Georgia St. (09/16/2022)
	51	(51 - 20 - 127)		vs Western Caro. (10/01/2022)
	50	(50 - 11 - 111)		vs UNC Greensboro (10/02/2022)
	48	(48 - 15 - 124)		vs USC Upstate (09/03/2022)
	46	(46 - 17 - 100)		vs Morgan St. (N) (08/27/2022)
KILLS 4-SETS (K-E-TA)	58	(58 - 17 - 135)		vs Presbyterian (09/17/2022)
	58	(58 - 20 - 154)		vs ETSU (10/22/2022)
	55	(55 - 32 - 150)		at Western Caro. (10/28/2022)
	54	(54 - 29 - 170)		at Charlotte (08/26/2022)
	51	(51 - 13 - 128)		vs Samford (11/11/2022)
KILLS 5-SETS (K-E-TA)	70	(70 - 24 - 194)		vs App State (09/02/2022)
	69	(69 - 29 - 193)		vs Chattanooga (10/21/2022)
	66	(66 - 23 - 156)		vs Furman (09/28/2022)
	65	(65 - 25 - 205)		vs Chattanooga (N) (11/18/2022)
	62	(62 - 22 - 199)		at Furman (10/26/2022)
TOTAL ATTEMPTS (K-E-TA)	205	(65 - 25 - 205)	5s	vs Chattanooga (N) (11/18/2022)
	199	(62 - 22 - 199)	5s	at Furman (10/26/2022)
	194	(70 - 24 - 194)	5s	vs App State (09/02/2022)
	193	(69 - 29 - 193)	5s	vs Chattanooga (10/21/2022)
	178	(57 - 23 - 178)	5s	vs Coastal Carolina (N) (09/09/2022)
	173	(49 - 23 - 173)	4s	vs Eastern Ky. (09/02/2022)
	170	(54 - 29 - 170)	4s	at Charlotte (08/26/2022)
	162	(58 - 20 - 162)	5s	vs Syracuse (N) (08/27/2022)
	156	(66 - 23 - 156)	5s	vs Furman (09/28/2022)
154	(58 - 20 - 154)	4s	vs ETSU (10/22/2022)	
TOTAL ATTEMPTS 3-SETS (K-E-TA)	127	(51 - 20 - 127)		vs Western Caro. (10/01/2022)
	124	(48 - 15 - 124)		vs USC Upstate (09/03/2022)
	124	(38 - 26 - 124)		at Chattanooga (09/24/2022)
	114	(43 - 15 - 114)		at UNC Greensboro (10/29/2022)
	112	(42 - 15 - 112)		at Col. of Charleston (09/10/2022)
TOTAL ATTEMPTS 4-SETS (K-E-TA)	173	(49 - 23 - 173)		vs Eastern Ky. (09/02/2022)
	170	(54 - 29 - 170)		at Charlotte (08/26/2022)
	154	(58 - 20 - 154)		vs ETSU (10/22/2022)
	150	(55 - 32 - 150)		at Western Caro. (10/28/2022)
	135	(58 - 17 - 135)		vs Presbyterian (09/17/2022)



2022 TEAM MATCH HIGHS (Cont.)

Team Game Highs

TOTAL ATTEMPTS	205	(65 - 25 - 205)		vs Chattanooga (N) (11/18/2022)
5-SETS (K-E-TA)	199	(62 - 22 - 199)		at Furman (10/26/2022)
	194	(70 - 24 - 194)		vs App State (09/02/2022)
	193	(69 - 29 - 193)		vs Chattanooga (10/21/2022)
	178	(57 - 23 - 178)		vs Coastal Carolina (N) (09/09/2022)
ASSISTS	63		5s	vs Chattanooga (10/21/2022)
	62		5s	vs Furman (09/28/2022)
	61		5s	vs App State (09/02/2022)
	61		5s	vs Chattanooga (N) (11/18/2022)
	58		5s	at Furman (10/26/2022)
ASSISTS 3-SETS	50			vs UNC Greensboro (10/02/2022)
	46			vs Western Caro. (10/01/2022)
	45			vs Georgia St. (09/16/2022)
	43			vs Morgan St. (N) (08/27/2022)
	43			vs USC Upstate (09/03/2022)
ASSISTS 4-SETS	54			vs Presbyterian (09/17/2022)
	53			vs ETSU (10/22/2022)
	53			at Western Caro. (10/28/2022)
	52			at Charlotte (08/26/2022)
	45			vs Eastern Ky. (09/02/2022)
ASSISTS 5-SETS	63			vs Chattanooga (10/21/2022)
	62			vs Furman (09/28/2022)
	61			vs App State (09/02/2022)
	61			vs Chattanooga (N) (11/18/2022)
	58			at Furman (10/26/2022)
DIGS	96		5s	vs App State (09/02/2022)
	94		5s	vs Chattanooga (N) (11/18/2022)
	92		5s	at Furman (10/26/2022)
	89		5s	vs Chattanooga (10/21/2022)
	79		5s	vs Coastal Carolina (N) (09/09/2022)
DIGS 3-SETS	65			vs USC Upstate (09/03/2022)
	63			vs Western Caro. (10/01/2022)
	51			at Col. of Charleston (09/10/2022)
	51			at Chattanooga (09/24/2022)
	51			vs The Citadel (10/05/2022)
DIGS 4-SETS	70			at Charlotte (08/26/2022)
	67			vs Eastern Ky. (09/02/2022)
	66			at Western Caro. (10/28/2022)
	61			vs Samford (11/11/2022)
	57			vs ETSU (10/22/2022)
DIGS 5-SETS	96			vs App State (09/02/2022)
	94			vs Chattanooga (N) (11/18/2022)
	92			at Furman (10/26/2022)
	89			vs Chattanooga (10/21/2022)
	79			vs Coastal Carolina (N) (09/09/2022)
ACES	12			vs South Carolina St. (09/16/2022)
	10			at Mercer (10/14/2022)
	9			at Furman (10/26/2022)
	9			vs Samford (11/11/2022)
	8			vs Morgan St. (N) (08/27/2022)
	8			at Col. of Charleston (09/10/2022)
	8			vs UNC Greensboro (10/02/2022)
BLOCKS (BS-BA)	13.0	(2 - 22)		at Furman (10/26/2022)
	12.0	(7 - 10)		vs USC Upstate (09/03/2022)
	12.0	(3 - 18)		vs ETSU (10/22/2022)
	12.0	(7 - 10)		at Western Caro. (10/28/2022)
	12.0	(3 - 18)		at UNC Greensboro (10/29/2022)
	11.0	(3 - 16)		at Chattanooga (09/24/2022)
	11.0	(7 - 8)		vs Furman (09/28/2022)
	11.0	(2 - 18)		at The Citadel (11/02/2022)
	11.0	(3 - 16)		vs Samford (11/11/2022)

2022 OPPONENT MATCH HIGHS

Team Opponents Game Highs

ATTACK PERCENT (K-E-TA)	.281	(57 - 18 - 139)		at Samford (10/15/2022)
	.276	(58 - 21 - 134)		vs Mercer (11/12/2022)
	.264	(51 - 18 - 125)		vs Presbyterian (09/17/2022)
	.264	(55 - 17 - 144)		at Mercer (10/14/2022)
	.257	(55 - 19 - 140)		at ETSU (09/23/2022)
	.247	(64 - 24 - 162)		vs Syracuse (N) (08/27/2022)
	.242	(34 - 11 - 95)		vs UNC Greensboro (10/02/2022)
	.242	(60 - 17 - 178)		vs Chattanooga (10/21/2022)
	.240	(60 - 19 - 171)		vs Eastern Ky. (09/02/2022)
	.214	(55 - 21 - 159)		at Charlotte (08/26/2022)
KILLS (K-E-TA)	64	(64 - 24 - 162)	5s	vs Syracuse (N) (08/27/2022)
	62	(62 - 27 - 193)	5s	vs Chattanooga (N) (11/18/2022)
	60	(60 - 19 - 171)	4s	vs Eastern Ky. (09/02/2022)
	60	(60 - 24 - 177)	5s	vs Coastal Carolina (N) (09/09/2022)
	60	(60 - 17 - 178)	5s	vs Chattanooga (10/21/2022)
	58	(58 - 19 - 189)	5s	vs App State (09/02/2022)
	58	(58 - 36 - 196)	5s	at Furman (10/26/2022)
	58	(58 - 21 - 134)	5s	vs Mercer (11/12/2022)
	57	(57 - 18 - 139)	4s	at Samford (10/15/2022)
	55	(55 - 21 - 159)	4s	at Charlotte (08/26/2022)
	55	(55 - 19 - 140)	4s	at ETSU (09/23/2022)
	55	(55 - 17 - 144)	5s	at Mercer (10/14/2022)
	55	(55 - 25 - 144)	4s	vs ETSU (10/22/2022)
KILLS 3-SETS (K-E-TA)	39	(39 - 22 - 131)		vs USC Upstate (09/03/2022)
	38	(38 - 23 - 114)		at UNC Greensboro (10/29/2022)
	37	(37 - 17 - 111)		at Chattanooga (09/24/2022)
	34	(34 - 19 - 108)		at Col. of Charleston (09/10/2022)
	34	(34 - 11 - 95)		vs UNC Greensboro (10/02/2022)
KILLS 4-SETS (K-E-TA)	60	(60 - 19 - 171)		vs Eastern Ky. (09/02/2022)
	57	(57 - 18 - 139)		at Samford (10/15/2022)
	55	(55 - 21 - 159)		at Charlotte (08/26/2022)
	55	(55 - 19 - 140)		at ETSU (09/23/2022)
	55	(55 - 25 - 144)		vs ETSU (10/22/2022)
KILLS 5-SETS (K-E-TA)	64	(64 - 24 - 162)		vs Syracuse (N) (08/27/2022)
	62	(62 - 27 - 193)		vs Chattanooga (N) (11/18/2022)
	60	(60 - 24 - 177)		vs Coastal Carolina (N) (09/09/2022)
	60	(60 - 17 - 178)		vs Chattanooga (10/21/2022)
	58	(58 - 19 - 189)		vs App State (09/02/2022)
	58	(58 - 36 - 196)		at Furman (10/26/2022)
	58	(58 - 21 - 134)		vs Mercer (11/12/2022)
TOTAL ATTEMPTS (K-E-TA)	196	(58 - 36 - 196)	5s	at Furman (10/26/2022)
	193	(62 - 27 - 193)	5s	vs Chattanooga (N) (11/18/2022)
	189	(58 - 19 - 189)	5s	vs App State (09/02/2022)
	178	(60 - 17 - 178)	5s	vs Chattanooga (10/21/2022)
	177	(60 - 24 - 177)	5s	vs Coastal Carolina (N) (09/09/2022)
	171	(60 - 19 - 171)	4s	vs Eastern Ky. (09/02/2022)
	162	(64 - 24 - 162)	5s	vs Syracuse (N) (08/27/2022)
	159	(55 - 21 - 159)	4s	at Charlotte (08/26/2022)
	153	(49 - 28 - 153)	5s	vs Furman (09/28/2022)
	151	(52 - 27 - 151)	4s	at Western Caro. (10/28/2022)



2022 OPPONENT MATCH HIGHS (Cont.)

Team Opponents Game Highs

TOTAL ATTEMPTS 3-SETS (K-E-TA)	131	(39 - 22 - 131)	vs USC Upstate (09/03/2022)
	114	(38 - 23 - 114)	at UNC Greensboro (10/29/2022)
	111	(37 - 17 - 111)	at Chattanooga (09/24/2022)
	109	(24 - 12 - 109)	vs Western Caro. (10/01/2022)
	108	(34 - 19 - 108)	at Col. of Charleston (09/10/2022)
TOTAL ATTEMPTS 4-SETS (K-E-TA)	108	(30 - 20 - 108)	at The Citadel (11/02/2022)
	171	(60 - 19 - 171)	vs Eastern Ky. (09/02/2022)
	159	(55 - 21 - 159)	at Charlotte (08/26/2022)
	151	(52 - 27 - 151)	at Western Caro. (10/28/2022)
	144	(55 - 25 - 144)	vs ETSU (10/22/2022)
TOTAL ATTEMPTS 5-SETS (K-E-TA)	140	(55 - 19 - 140)	at ETSU (09/23/2022)
	196	(58 - 36 - 196)	at Furman (10/26/2022)
	193	(62 - 27 - 193)	vs Chattanooga (N) (11/18/2022)
	189	(58 - 19 - 189)	vs App State (09/02/2022)
	178	(60 - 17 - 178)	vs Chattanooga (10/21/2022)
ASSISTS	177	(60 - 24 - 177)	vs Coastal Carolina (N) (09/09/2022)
	59		5s vs Syracuse (N) (08/27/2022)
	56		5s at Furman (10/26/2022)
	56		5s vs Chattanooga (N) (11/18/2022)
	54		5s vs Chattanooga (10/21/2022)
ASSISTS 3-SETS	52		5s vs App State (09/02/2022)
	36		at UNC Greensboro (10/29/2022)
	35		vs USC Upstate (09/03/2022)
	31		vs Morgan St. (N) (08/27/2022)
	31		at Col. of Charleston (09/10/2022)
ASSISTS 4-SETS	31		vs UNC Greensboro (10/02/2022)
	51		at Charlotte (08/26/2022)
	51		at ETSU (09/23/2022)
	51		at Western Caro. (10/28/2022)
	50		vs ETSU (10/22/2022)
ASSISTS 5-SETS	48		at Samford (10/15/2022)
	59		vs Syracuse (N) (08/27/2022)
	56		at Furman (10/26/2022)
	56		vs Chattanooga (N) (11/18/2022)
	54		vs Chattanooga (10/21/2022)
DIGS	52		vs App State (09/02/2022)
	98		5s vs Chattanooga (N) (11/18/2022)
	93		5s at Furman (10/26/2022)
	92		5s vs Coastal Carolina (N) (09/09/2022)
	86		5s vs App State (09/02/2022)
DIGS 3-SETS	82		5s vs Chattanooga (10/21/2022)
	57		vs USC Upstate (09/03/2022)
	51		at Col. of Charleston (09/10/2022)
	51		at Chattanooga (09/24/2022)
	51		vs Western Caro. (10/01/2022)
DIGS 4-SETS	49		at UNC Greensboro (10/29/2022)
	72		vs Eastern Ky. (09/02/2022)
	70		at Charlotte (08/26/2022)
	69		vs ETSU (10/22/2022)
	60		at ETSU (09/23/2022)

DIGS 5-SETS	59		vs Samford (11/11/2022)
	98		vs Chattanooga (N) (11/18/2022)
	93		at Furman (10/26/2022)
	92		vs Coastal Carolina (N) (09/09/2022)
	86		vs App State (09/02/2022)
ACES	82		vs Chattanooga (10/21/2022)
	13		vs Mercer (11/12/2022)
	10		vs App State (09/02/2022)
	9		vs Chattanooga (N) (11/18/2022)
	8		at ETSU (09/23/2022)
	8		at Samford (10/15/2022)
	8		vs Chattanooga (10/21/2022)
	8		at The Citadel (11/02/2022)
BLOCKS	14.0	(7 - 14)	at Charlotte (08/26/2022)

2022 INDIVIDUAL MATCH HIGHS

Team Individual Game Highs

ATTACK PERCENT (K-E-TA) minimum 12 kills	.750	(16 - 1 - 20)		Loehr, Millie vs Presbyterian (09/17/2022)
	.609	(16 - 2 - 23)		Loehr, Millie vs Mercer (11/12/2022)
	.528	(20 - 1 - 36)		Zeman, Bella vs Georgia St. (09/16/2022)
	.500	(15 - 2 - 26)		Barham, Sarah vs Eastern Ky. (09/02/2022)
	.484	(15 - 0 - 31)		Loehr, Millie vs Chattanooga (10/21/2022)
	.481	(16 - 3 - 27)		Loehr, Millie vs App State (09/02/2022)
	.433	(15 - 2 - 30)		Smith, Kennedy vs The Citadel (10/05/2022)
	.414	(16 - 4 - 29)		Zeman, Bella vs Syracuse (N) (08/27/2022)
	.407	(15 - 4 - 27)		Barham, Sarah at Charlotte (08/26/2022)
	.367	(14 - 3 - 30)		Zeman, Bella vs Furman (09/28/2022)
KILLS (K-E-TA)	20	(20 - 1 - 36)	3s	Zeman, Bella vs Georgia St. (09/16/2022)
	18	(18 - 6 - 41)	5s	Zeman, Bella vs Chattanooga (10/21/2022)
	17	(17 - 5 - 47)	5s	Zeman, Bella vs App State (09/02/2022)
	16	(16 - 2 - 23)	5s	Loehr, Millie vs Mercer (11/12/2022)
	16	(16 - 3 - 27)	5s	Loehr, Millie vs App State (09/02/2022)
	16	(16 - 1 - 20)	4s	Loehr, Millie vs Presbyterian (09/17/2022)
	16	(16 - 8 - 42)	5s	Smith, Kennedy vs Furman (09/28/2022)
	16	(16 - 4 - 56)	5s	Smith, Kennedy at Furman (10/26/2022)
	16	(16 - 4 - 29)	5s	Zeman, Bella vs Syracuse (N) (08/27/2022)
	16	(16 - 4 - 34)	4s	Zeman, Bella vs Presbyterian (09/17/2022)
KILLS 3-SETS (K-E-TA)	20	(20 - 1 - 36)		Zeman, Bella vs Georgia St. (09/16/2022)
	15	(15 - 2 - 30)		Smith, Kennedy vs The Citadel (10/05/2022)
	13	(13 - 5 - 35)		Smith, Kennedy vs Western Caro. (10/01/2022)
	13	(13 - 7 - 37)		Zeman, Bella vs USC Upstate (09/03/2022)
	13	(13 - 4 - 30)		Zeman, Bella vs Western Caro. (10/01/2022)
KILLS 4-SETS (K-E-TA)	16	(16 - 1 - 20)		Loehr, Millie vs Presbyterian (09/17/2022)
	16	(16 - 4 - 34)		Zeman, Bella vs Presbyterian (09/17/2022)
	16	(16 - 4 - 29)		Zeman, Bella vs Syracuse (N) (08/27/2022)
	15	(15 - 4 - 27)		Barham, Sarah at Charlotte (08/26/2022)
	15	(15 - 2 - 26)		Barham, Sarah vs Eastern Ky. (09/02/2022)
KILLS 5-SETS (K-E-TA)	18	(18 - 6 - 41)		Zeman, Bella vs Chattanooga (10/21/2022)
	17	(17 - 5 - 47)		Zeman, Bella vs App State (09/02/2022)
	16	(16 - 2 - 23)		Loehr, Millie vs Mercer (11/12/2022)
	16	(16 - 3 - 27)		Loehr, Millie vs App State (09/02/2022)
	16	(16 - 8 - 42)		Smith, Kennedy vs Furman (09/28/2022)
	16	(16 - 4 - 56)		Smith, Kennedy at Furman (10/26/2022)
TOTAL ATTEMPTS (K-E-TA)	56	(16 - 4 - 56)	5s	Smith, Kennedy at Furman (10/26/2022)
	48	(14 - 6 - 48)	5s	Smith, Kennedy at Mercer (10/14/2022)
	47	(13 - 4 - 47)	5s	Morgan, Mary Emily vs App State (09/02/2022)
	47	(17 - 5 - 47)	5s	Zeman, Bella vs App State (09/02/2022)
	43	(14 - 4 - 43)	5s	Morgan, Mary Emily vs Chattanooga (N) (11/18/2022)
	42	(16 - 8 - 42)	5s	Smith, Kennedy vs Furman (09/28/2022)
	42	(13 - 7 - 42)	5s	Zeman, Bella vs Coastal Carolina (N) (09/09/2022)
	41	(13 - 7 - 41)	5s	Smith, Kennedy vs Chattanooga (N) (11/18/2022)
	41	(18 - 6 - 41)	5s	Zeman, Bella vs Chattanooga (10/21/2022)
	41	(13 - 5 - 41)	5s	Zeman, Bella at Furman (10/26/2022)
TOTAL ATTEMPTS 3-SETS (K-E-TA)	37	(13 - 7 - 37)		Zeman, Bella vs USC Upstate (09/03/2022)
	36	(20 - 1 - 36)		Zeman, Bella vs Georgia St. (09/16/2022)
	35	(13 - 5 - 35)		Smith, Kennedy vs Western Caro. (10/01/2022)
	33	(12 - 3 - 33)		Smith, Kennedy vs UNC Greensboro (10/02/2022)
	32	(9 - 5 - 32)		Morgan, Mary Emily vs USC Upstate (09/03/2022)



2022 INDIVIDUAL MATCH HIGHS (cont.)

Team Individual Game Highs

TOTAL ATTEMPTS 4-SETS (K-E-TA)	40	(9 - 4 - 40)		Smith, Kennedy vs ETSU (10/22/2022)
	34	(10 - 9 - 34)		Zeman, Bella at Western Caro. (10/28/2022)
	34	(16 - 4 - 34)		Zeman, Bella vs Presbyterian (09/17/2022)
	32	(9 - 6 - 32)		Smith, Kennedy at Western Caro. (10/28/2022)
	31	(7 - 4 - 31)		Morgan, Mary Emily vs Samford (11/11/2022)
	31	(11 - 5 - 31)		Zeman, Bella vs Samford (11/11/2022)
TOTAL ATTEMPTS 5-SETS (K-E-TA)	31	(11 - 5 - 31)		Zeman, Bella at Samford (10/15/2022)
	56	(16 - 4 - 56)		Smith, Kennedy at Furman (10/26/2022)
	48	(14 - 6 - 48)		Smith, Kennedy at Mercer (10/14/2022)
	47	(13 - 4 - 47)		Morgan, Mary Emily vs App State (09/02/2022)
	47	(17 - 5 - 47)		Zeman, Bella vs App State (09/02/2022)
	43	(14 - 4 - 43)		Morgan, Mary Emily vs Chattanooga (N) (11/18/2022)
POINTS (K-A-B)	23.0	(20 - 0 - 3.0)	3s	Zeman, Bella vs Georgia St. (09/16/2022)
	21.0	(15 - 2 - 4.0)	4s	Barham, Sarah vs Eastern Ky. (09/02/2022)
	18.0	(15 - 0 - 3.0)	4s	Barham, Sarah at Charlotte (08/26/2022)
	18.0	(18 - 0 - 0.0)	5s	Zeman, Bella vs Chattanooga (10/21/2022)
	17.5	(15 - 2 - 0.5)	5s	Loehr, Millie vs Chattanooga (10/21/2022)
	17.5	(16 - 0 - 1.5)	4s	Loehr, Millie vs Presbyterian (09/17/2022)
	17.5	(16 - 0 - 1.5)	5s	Smith, Kennedy vs Furman (09/28/2022)
	17.5	(16 - 0 - 1.5)	4s	Zeman, Bella vs Presbyterian (09/17/2022)
	17.5	(17 - 0 - 0.5)	5s	Zeman, Bella vs App State (09/02/2022)
POINTS 3-SET (K-A-B)	23.0	(20 - 0 - 3.0)		Zeman, Bella vs Georgia St. (09/16/2022)
	15.0	(15 - 0 - 0.0)		Smith, Kennedy vs The Citadel (10/05/2022)
	14.5	(13 - 0 - 1.5)		Zeman, Bella vs USC Upstate (09/03/2022)
	14.0	(11 - 1 - 2.0)		Barham, Sarah at Col. of Charleston (09/10/2022)
	13.5	(11 - 0 - 2.5)		Barham, Sarah vs Morgan St. (N) (08/27/2022)
	13.5	(7 - 0 - 6.5)		Barham, Sarah vs USC Upstate (09/03/2022)
POINTS 4-SETS (K-A-B)	21.0	(15 - 2 - 4.0)		Barham, Sarah vs Eastern Ky. (09/02/2022)
	18.0	(15 - 0 - 3.0)		Barham, Sarah at Charlotte (08/26/2022)
	17.5	(16 - 0 - 1.5)		Loehr, Millie vs Presbyterian (09/17/2022)
	17.5	(16 - 0 - 1.5)		Zeman, Bella vs Presbyterian (09/17/2022)
	16.5	(16 - 0 - 0.5)		Zeman, Bella vs Syracuse (N) (08/27/2022)
POINTS 5-SETS (K-A-B)	18.0	(18 - 0 - 0.0)		Zeman, Bella vs Chattanooga (10/21/2022)
	17.5	(15 - 2 - 0.5)		Loehr, Millie vs Chattanooga (10/21/2022)
	17.5	(16 - 0 - 1.5)		Smith, Kennedy vs Furman (09/28/2022)
	17.5	(17 - 0 - 0.5)		Zeman, Bella vs App State (09/02/2022)
	17.0	(13 - 1 - 3.0)		Barham, Sarah vs App State (09/02/2022)
	17.0	(16 - 0 - 1.0)		Loehr, Millie vs App State (09/02/2022)
	17.0	(16 - 0 - 1.0)		Smith, Kennedy at Furman (10/26/2022)
ASSISTS	52		5s	Hensley, Victoria vs Chattanooga (N) (11/18/2022)
	44		3s	Hensley, Victoria vs UNC Greensboro (10/02/2022)
	43		3s	Hensley, Victoria vs Western Caro. (10/01/2022)
	43		5s	Hodsdon, Emily vs Syracuse (N) (08/27/2022)
	40		5s	Hensley, Victoria at Mercer (10/14/2022)
ASSISTS 3-SETS	44			Hensley, Victoria vs UNC Greensboro (10/02/2022)
	43			Hensley, Victoria vs Western Caro. (10/01/2022)
	37			Hodsdon, Emily vs Morgan St. (N) (08/27/2022)
	34			Hensley, Victoria vs The Citadel (10/05/2022)
	33			Hensley, Victoria at UNC Greensboro (10/29/2022)
ASSISTS 4-SETS	38			Hodsdon, Emily vs Eastern Ky. (09/02/2022)
	36			Hensley, Victoria vs Samford (11/11/2022)
	33			Hensley, Victoria at Western Caro. (10/28/2022)
	29			Hensley, Victoria vs ETSU (10/22/2022)
	27			Hensley, Victoria vs Presbyterian (09/17/2022)
	27			Hodsdon, Emily at Charlotte (08/26/2022)

2022 INDIVIDUAL MATCH HIGHS (cont.)

Team Individual Game Highs

ASSISTS 5-SETS	52		Hensley, Victoria vs Chattanooga (N) (11/18/2022)
	43		Hodsdon, Emily vs Syracuse (N) (08/27/2022)
	40		Hensley, Victoria at Mercer (10/14/2022)
	37		Hensley, Victoria vs Mercer (11/12/2022)
	35		Hensley, Victoria at Furman (10/26/2022)
	35		Hensley, Victoria vs Furman (09/28/2022)
DIGS	30	5s	Richman, Abbey vs Chattanooga (10/21/2022)
	27	5s	Richman, Abbey at Furman (10/26/2022)
	24	5s	Richman, Abbey vs Chattanooga (N) (11/18/2022)
	22	5s	Richman, Abbey at Mercer (10/14/2022)
	22	5s	Smith, Kennedy vs Chattanooga (N) (11/18/2022)
DIGS 3-SETS	19		Richman, Abbey vs Western Caro. (10/01/2022)
	18		Richman, Abbey at The Citadel (11/02/2022)
	18		Smith, Kennedy vs Western Caro. (10/01/2022)
	17		Morgan, Mary Emily vs USC Upstate (09/03/2022)
	16		Richman, Abbey vs Georgia St. (09/16/2022)
	16		Richman, Abbey at UNC Greensboro (10/29/2022)
DIGS 4-SETS	20		Richman, Abbey vs ETSU (10/22/2022)
	19		Brown, Kaitlyn at Charlotte (08/26/2022)
	18		Richman, Abbey vs Samford (11/11/2022)
	17		Richman, Abbey at Western Caro. (10/28/2022)
	15		Morgan, Mary Emily vs Samford (11/11/2022)
DIGS 5-SETS	30		Richman, Abbey vs Chattanooga (10/21/2022)
	27		Richman, Abbey at Furman (10/26/2022)
	24		Richman, Abbey vs Chattanooga (N) (11/18/2022)
	22		Richman, Abbey at Mercer (10/14/2022)
	22		Smith, Kennedy vs Chattanooga (N) (11/18/2022)
ACES	4		Hensley, Victoria vs South Carolina St. (09/16/2022)
	4		Loehr, Millie vs Samford (11/11/2022)
	4		Przystup, Caroline vs Morgan St. (N) (08/27/2022)
	4		Przystup, Caroline at Mercer (10/14/2022)
	3		Barham, Sarah vs UNC Greensboro (10/02/2022)
	3		Brown, Kaitlyn at Col. of Charleston (09/10/2022)
	3		Freire, Jessica vs South Carolina St. (09/16/2022)
	3		Hensley, Victoria vs Mercer (11/12/2022)
	3		Hensley, Victoria at The Citadel (11/02/2022)
	3		Hensley, Victoria vs App State (09/02/2022)
	3		Hensley, Victoria at Furman (10/26/2022)
	3		Hodsdon, Emily vs Syracuse (N) (08/27/2022)
	3		Hodsdon, Emily vs South Carolina St. (09/16/2022)
	3		Hodsdon, Emily vs Georgia St. (09/16/2022)
	3		Hodsdon, Emily vs Morgan St. (N) (08/27/2022)
	3		Morgan, Mary Emily vs Coastal Carolina (N) (09/09/2022)
3		Morgan, Mary Emily vs Samford (11/11/2022)	



2022 INDIVIDUAL MATCH HIGHS (cont.)

Team Individual Game Highs

BLOCKS (BS-BA)	8.0	(5 - 3)	Barham, Sarah vs USC Upstate (09/03/2022)
	8.0	(0 - 8)	Barham, Sarah at UNC Greensboro (10/29/2022)
	7.0	(2 - 5)	Loehr, Millie at Furman (10/26/2022)
	7.0	(1 - 6)	Wyatt, Emory vs ETSU (10/22/2022)
	6.0	(0 - 6)	Barham, Sarah vs Samford (11/11/2022)
	6.0	(3 - 3)	Barham, Sarah vs Furman (09/28/2022)
	6.0	(0 - 6)	Barham, Sarah at Furman (10/26/2022)
	6.0	(0 - 6)	Barham, Sarah vs ETSU (10/22/2022)
	6.0	(1 - 5)	Loehr, Millie at Chattanooga (09/24/2022)
	6.0	(2 - 4)	Loehr, Millie at Col. of Charleston (09/10/2022)
	6.0	(1 - 5)	MacLean, Sarah at UNC Greensboro (10/29/2022)
	6.0	(0 - 6)	Morgan, Mary Emily at The Citadel (11/02/2022)

2022 CATEGORY LEADERS

Attack (by PCT)

#	Player	S	K	K/S	E	TA	PCT
15	Loehr, Millie	102	242	2.37	50	491	.391
17	Hensley, Victoria	104	37	0.36	5	85	.376
6	Barham, Sarah	111	251	2.26	72	537	.333
18	Rakoski, Annemarie	22	20	0.91	4	54	.296
3	MacLean, Sarah	103	179	1.74	64	466	.247
12	Zeman, Bella	108	314	2.91	127	838	.223
2	Wyatt, Emory	35	50	1.43	25	132	.189
7	Smith, Kennedy	97	202	2.08	99	671	.154
21	Foote, Addison	29	30	1.03	17	111	.117
1	Morgan, Mary Emily	88	115	1.31	67	441	.109
23	Bertsch, Alexa	7	10	1.43	7	28	.107
11	Brown, Kaitlyn	66	2	0.03	1	21	.048
20	Richman, Abbey	102	2	0.02	1	26	.038
13	Hodsdon, Emily	77	5	0.06	7	50	-.040
8	Eubanks, Carson	4	0	0.00	1	2	-.500
5	Freire, Jessica	8	0	0.00	0	0	.000
9	Przystup, Caroline	78	7	0.09	7	64	.000
16	Yaffa, Meghan	6	4	0.67	7	14	-.214
4	Sharpe, Chasidy	47	0	0.00	0	0	.000

Kill (by K)

#	Player	S	K	K/S
12	Zeman, Bella	108	314	2.91
6	Barham, Sarah	111	251	2.26
15	Loehr, Millie	102	242	2.37
7	Smith, Kennedy	97	202	2.08
3	MacLean, Sarah	103	179	1.74
1	Morgan, Mary Emily	88	115	1.31
2	Wyatt, Emory	35	50	1.43
17	Hensley, Victoria	104	37	0.36
21	Foote, Addison	29	30	1.03
18	Rakoski, Annemarie	22	20	0.91
23	Bertsch, Alexa	7	10	1.43
9	Przystup, Caroline	78	7	0.09
13	Hodsdon, Emily	77	5	0.06
16	Yaffa, Meghan	6	4	0.67
11	Brown, Kaitlyn	66	2	0.03
20	Richman, Abbey	102	2	0.02
8	Eubanks, Carson	4	0	0.00
5	Freire, Jessica	8	0	0.00
4	Sharpe, Chasidy	47	0	0.00

Set (by A/S)

#	Player	S	A	A/S	TA	PCT
17	Hensley, Victoria	104	778	7.48	2080	.366
13	Hodsdon, Emily	77	402	5.22	1107	.352
20	Richman, Abbey	102	67	0.66	273	.238
11	Brown, Kaitlyn	66	31	0.47	148	.196
8	Eubanks, Carson	4	1	0.25	4	.250
1	Morgan, Mary Emily	88	19	0.22	94	.191
21	Foote, Addison	29	5	0.17	25	.080
5	Freire, Jessica	8	1	0.13	2	.500
7	Smith, Kennedy	97	12	0.12	74	.135
9	Przystup, Caroline	78	6	0.08	55	.055
6	Barham, Sarah	111	8	0.07	64	.094
12	Zeman, Bella	108	7	0.06	46	.087
3	MacLean, Sarah	103	5	0.05	23	.087
15	Loehr, Millie	102	4	0.04	39	.051
4	Sharpe, Chasidy	47	1	0.02	4	.250
16	Yaffa, Meghan	6	0	0.00	0	.000
23	Bertsch, Alexa	7	0	0.00	1	.000
2	Wyatt, Emory	35	0	0.00	4	.000
18	Rakoski, Annemarie	22	0	0.00	6	.000

Serve (by SA/S)

#	Player	S	SA	SE	SA/S	TA	PCT
5	Freire, Jessica	8	5	4	0.63	22	.818
17	Hensley, Victoria	104	33	39	0.32	391	.900
20	Richman, Abbey	102	28	37	0.27	336	.890
13	Hodsdon, Emily	77	20	10	0.26	307	.967
9	Przystup, Caroline	78	17	23	0.22	249	.908
1	Morgan, Mary Emily	88	19	35	0.22	299	.883
21	Foote, Addison	29	6	12	0.21	65	.815
11	Brown, Kaitlyn	66	12	13	0.18	205	.937
6	Barham, Sarah	111	10	20	0.09	175	.886
15	Loehr, Millie	102	8	10	0.08	97	.897
7	Smith, Kennedy	97	7	11	0.07	244	.955
4	Sharpe, Chasidy	47	3	3	0.06	74	.959
12	Zeman, Bella	108	3	3	0.03	19	.842
8	Eubanks, Carson	4	0	1	0.00	11	.909
3	MacLean, Sarah	103	0	0	0.00	1	1.000
16	Yaffa, Meghan	6	0	0	0.00	2	1.000
23	Bertsch, Alexa	7	0	1	0.00	1	.000
2	Wyatt, Emory	35	0	0	0.00	0	.000
18	Rakoski, Annemarie	22	0	0	0.00	0	.000



2022 CATEGORY LEADERS (Cont.)

Block (by BLK/S)

#	Player	S	BS	BA	TOTAL	BLK/S
6	Barham, Sarah	111	37	86	123.0	1.11
15	Loehr, Millie	102	22	57	79.0	0.77
2	Wyatt, Emory	35	4	20	24.0	0.69
18	Rakoski, Annemarie	22	6	7	13.0	0.59
3	MacLean, Sarah	103	5	49	54.0	0.52
7	Smith, Kennedy	97	10	25	35.0	0.36
12	Zeman, Bella	108	9	25	34.0	0.31
1	Morgan, Mary Emily	88	4	15	19.0	0.22
21	Foote, Addison	29	1	5	6.0	0.21
16	Yaffa, Meghan	6	0	1	1.0	0.17
23	Bertsch, Alexa	7	0	1	1.0	0.14
17	Hensley, Victoria	104	3	10	13.0	0.13
13	Hodsdon, Emily	77	0	2	2.0	0.03
9	Przystup, Caroline	78	0	0	0.0	0.00
11	Brown, Kaitlyn	66	0	0	0.0	0.00
4	Sharpe, Chasidy	47	0	0	0.0	0.00
8	Eubanks, Carson	4	0	0	0.0	0.00
20	Richman, Abbey	102	0	0	0.0	0.00
5	Freire, Jessica	8	0	0	0.0	0.00

Defense (by DIG/S)

#	Player	S	DIG	DIG/S	BHE
20	Richman, Abbey	102	389	3.81	1
1	Morgan, Mary Emily	88	233	2.65	1
11	Brown, Kaitlyn	66	157	2.38	0
7	Smith, Kennedy	97	220	2.27	2
17	Hensley, Victoria	104	212	2.04	10
13	Hodsdon, Emily	77	142	1.84	14
21	Foote, Addison	29	51	1.76	0
9	Przystup, Caroline	78	126	1.62	0
8	Eubanks, Carson	4	6	1.50	0
12	Zeman, Bella	108	70	0.65	2
6	Barham, Sarah	111	55	0.50	1
3	MacLean, Sarah	103	49	0.48	0
2	Wyatt, Emory	35	16	0.46	0
23	Bertsch, Alexa	7	3	0.43	0
18	Rakoski, Annemarie	22	8	0.36	0
15	Loehr, Millie	102	25	0.25	0
16	Yaffa, Meghan	6	1	0.17	0
4	Sharpe, Chasidy	47	5	0.11	0
5	Freire, Jessica	8	0	0.00	0

Points (by POINTS/S)

#	Player	S	POINTS	POINTS/S
12	Zeman, Bella	108	338.5	3.13
6	Barham, Sarah	111	341.0	3.07
15	Loehr, Millie	102	300.5	2.95
7	Smith, Kennedy	97	231.5	2.39
3	MacLean, Sarah	103	208.5	2.02
2	Wyatt, Emory	35	64.0	1.83
1	Morgan, Mary Emily	88	145.5	1.65
23	Bertsch, Alexa	7	10.5	1.50
21	Foote, Addison	29	39.5	1.36
18	Rakoski, Annemarie	22	29.5	1.34
16	Yaffa, Meghan	6	4.5	0.75
17	Hensley, Victoria	104	78.0	0.75
5	Freire, Jessica	8	5.0	0.63
13	Hodsdon, Emily	77	26.0	0.34
9	Przystup, Caroline	78	24.0	0.31
20	Richman, Abbey	102	30.0	0.29
11	Brown, Kaitlyn	66	14.0	0.21
4	Sharpe, Chasidy	47	3.0	0.06
8	Eubanks, Carson	4	0.0	0.00

Receptions (by PCT)

#	Player	S	RE	RE/S	TA	PCT
13	Hodsdon, Emily	77	0	0.00	1	1.000
15	Loehr, Millie	102	0	0.00	3	1.000
3	MacLean, Sarah	103	0	0.00	5	1.000
6	Barham, Sarah	111	0	0.00	3	1.000
17	Hensley, Victoria	104	0	0.00	4	1.000
7	Smith, Kennedy	97	13	0.13	474	.973
12	Zeman, Bella	108	4	0.04	101	.960
9	Przystup, Caroline	78	11	0.14	230	.952
20	Richman, Abbey	102	23	0.23	396	.942
21	Foote, Addison	29	7	0.24	119	.941
11	Brown, Kaitlyn	66	15	0.23	247	.939
1	Morgan, Mary Emily	88	32	0.36	495	.935
8	Eubanks, Carson	4	1	0.25	5	.800
23	Bertsch, Alexa	7	2	0.29	9	.778
4	Sharpe, Chasidy	47	2	0.04	4	.500
5	Freire, Jessica	8	0	0.00	0	.000
16	Yaffa, Meghan	6	0	0.00	0	.000
2	Wyatt, Emory	35	0	0.00	0	.000
18	Rakoski, Annemarie	22	0	0.00	0	.000
TM	TEAM	-	48	0.42	-	-

2022 OVERALL STATISTICS

Game Records

Overall	Conference	Home	Away	Neutral
16 - 13	8 - 8	9 - 5	4 - 6	3 - 2

Team Box Score

##	Player	SP	MP-MS	Attack					Set				Serve				
				K	K/S	E	TA	PCT	A	A/S	TA	PCT	SA	SA/S	SE	TA	PCT
1	Morgan, Mary Emily	88	25-19	115	1.31	67	441	.109	19	0.22	94	.202	19	0.22	35	299	.883
2	Wyatt, Emory	35	15-0	50	1.43	25	132	.189	0	0.00	4	.000	0	0.00	0	0	.000
3	MacLean, Sarah	103	29-9	179	1.74	64	466	.247	5	0.05	23	.217	0	0.00	0	1	1.000
4	Sharpe, Chasidy	47	24-0	0	0.00	0	0	.000	1	0.02	4	.250	3	0.06	3	74	.959
5	Freire, Jessica	8	6-0	0	0.00	0	0	.000	1	0.13	2	.500	5	0.63	4	22	.818
6	Barham, Sarah	111	29-29	251	2.26	72	537	.333	8	0.07	64	.125	10	0.09	20	175	.886
7	Smith, Kennedy	97	26-18	202	2.08	99	671	.154	12	0.12	74	.162	7	0.07	11	244	.955
8	Eubanks, Carson	4	2-0	0	0.00	1	2	-.500	1	0.25	4	.250	0	0.00	1	11	.909
9	Przystup, Caroline	78	23-9	7	0.09	7	64	.000	6	0.08	55	.109	17	0.22	23	249	.908
11	Brown, Kaitlyn	66	18-4	2	0.03	1	21	.048	31	0.47	148	.209	12	0.18	13	205	.937
12	Zeman, Bella	108	29-21	314	2.91	127	838	.223	7	0.06	46	.152	3	0.03	3	19	.842
13	Hodsdon, Emily	77	22-9	5	0.06	7	50	-.040	402	5.22	1107	.363	20	0.26	10	307	.967
15	Loehr, Millie	102	29-28	242	2.37	50	491	.391	4	0.04	39	.103	8	0.08	10	97	.897
16	Yaffa, Meghan	6	4-1	4	0.67	7	14	-.214	0	0.00	0	.000	0	0.00	0	2	1.000
17	Hensley, Victoria	104	29-20	37	0.36	5	85	.376	778	7.48	2080	.374	33	0.32	39	391	.900
18	Rakoski, Annemarie	22	14-0	20	0.91	4	54	.296	0	0.00	6	.000	0	0.00	0	0	.000
20	Richman, Abbey	102	29-3	2	0.02	1	26	.038	67	0.66	273	.245	28	0.27	37	336	.890
21	Foote, Addison	29	11-3	30	1.03	17	111	.117	5	0.17	25	.200	6	0.21	12	65	.815
23	Bertsch, Alexa	7	5-1	10	1.43	7	28	.107	0	0.00	1	.000	0	0.00	1	1	.000
WOFFORD		113	29-29	1470	13.01	561	4031	.226	1347	11.92	4049	.333	171	1.51	222	2498	.911
Opponents		113	29-29	1312	11.61	597	3937	.182	1179	10.43	3970	.297	158	1.40	201	2345	.914

##	Player	SP	Receptions			Dig		Blocking					Points		
			RE	TA	PCT	DIG	DIG/S	BS	BA	TOTAL	BLK/S	BE	BHE	PTS	PTS/S
1	Morgan, Mary Emily	88	32	495	.935	233	2.65	4	15	19	0.22	0	1	145.5	1.65
2	Wyatt, Emory	35	0	0	.000	16	0.46	4	20	24	0.69	3	0	64.0	1.83
3	MacLean, Sarah	103	0	5	1.000	49	0.48	5	49	54	0.52	3	0	208.5	2.02
4	Sharpe, Chasidy	47	2	4	.500	5	0.11	0	0	0	0.00	0	0	3.0	0.06
5	Freire, Jessica	8	0	0	.000	0	0.00	0	0	0	0.00	0	0	5.0	0.63
6	Barham, Sarah	111	0	3	1.000	55	0.50	37	86	123	1.11	11	1	341.0	3.07
7	Smith, Kennedy	97	13	474	.973	220	2.27	10	25	35	0.36	2	2	231.5	2.39
8	Eubanks, Carson	4	1	5	.800	6	1.50	0	0	0	0.00	0	0	0.0	0.00
9	Przystup, Caroline	78	11	230	.952	126	1.62	0	0	0	0.00	0	0	24.0	0.31
11	Brown, Kaitlyn	66	15	247	.939	157	2.38	0	0	0	0.00	0	0	14.0	0.21
12	Zeman, Bella	108	4	101	.960	70	0.65	9	25	34	0.31	4	2	338.5	3.13
13	Hodsdon, Emily	77	0	1	1.000	142	1.84	0	2	2	0.03	2	14	26.0	0.34
15	Loehr, Millie	102	0	3	1.000	25	0.25	22	57	79	0.77	11	0	300.5	2.95
16	Yaffa, Meghan	6	0	0	.000	1	0.17	0	1	1	0.17	0	0	4.5	0.75
17	Hensley, Victoria	104	0	4	1.000	212	2.04	3	10	13	0.13	6	10	78.0	0.75
18	Rakoski, Annemarie	22	0	0	.000	8	0.36	6	7	13	0.59	0	0	29.5	1.34
20	Richman, Abbey	102	23	396	.942	389	3.81	0	0	0	0.00	0	1	30.0	0.29
21	Foote, Addison	29	7	119	.941	51	1.76	1	5	6	0.21	0	0	39.5	1.36
23	Bertsch, Alexa	7	2	9	.778	3	0.43	0	1	1	0.14	0	0	10.5	1.50
-	TEAM	-	48	-	-	-	-	-	-	-	-	-	-	-	-
WOFFORD		113	158	2144	.926	1768	15.65	101	303	252.5	2.23	42	31	1893.5	16.76
Opponents		113	171	2276	.925	1724	15.26	107	208	211.0	1.87	33	21	1681.0	14.88