



Officials: Ted Valentine, Bert Smith, Raymond Styons

Syracuse - 73

Record: 16-12 (9-8)

NO.	Name	Min	FG			Rebounds			Fouls		TP	AS	TO	ST	Blocks		+/-
			M-A	3P	M-A	M-A	OR	DR	TOT	PF					FD	BS	
0	Chris Bell	F 18:31	2-4	1-1	2-2	0	3	3	1	1	7	0	1	0	0	0	-19
1	Maliq Brown	F 16:17	1-2	0-0	3-4	2	0	2	0	2	5	0	1	0	1	1	-12
14	Jesse Edwards	C 35:50	5-8	0-0	2-3	4	6	10	3	4	12	2	2	1	1	0	-19
3	Judah Mintz	G 37:25	8-15	4-4	3-5	0	4	4	2	4	23	1	3	0	0	0	-16
11	Joseph Girard III	G 29:40	4-10	2-6	1-1	0	2	2	0	2	11	0	3	0	0	0	-24
24	Quadir Copeland	11:12	1-3	0-1	0-0	0	0	0	3	0	2	1	1	0	0	0	-7
13	Benny Williams	25:46	4-8	0-3	1-2	0	2	2	1	2	9	1	0	1	0	0	-5
5	Justin Taylor	10:59	1-2	0-1	0-0	0	1	1	0	0	2	0	0	0	1	0	9
55	Mounir Hima	04:10	0-0	0-0	0-0	0	0	0	2	0	0	0	0	0	0	0	1
10	Symir Torrence	10:10	1-5	0-2	0-0	0	3	3	1	0	2	4	0	1	0	0	3
Team						1	0	1			0		0				
Totals			27-57	7-18	12-17	7	21	28	13	15	73	9	11	3	3	1	-18

Shooting By Period		
1 st FG%	10-26	38.5%
3PT%	4-9	44.4%
FT%	8-11	72.7%
2 nd FG%	17-31	54.8%
3PT%	3-9	33.3%
FT%	4-6	66.7%
GMFG%	27-57	47.4%
3PT%	7-18	38.9%
FT%	12-17	70.6%

Dead Ball Rebounds: 2, 0

Technical Fouls: NONE

Clemson - 91

Record: 20-8 (12-5)

NO.	Name	Min	FG			Rebounds			Fouls		TP	AS	TO	ST	Blocks		+/-
			M-A	3P	M-A	M-A	OR	DR	TOT	PF					FD	BS	
4	Ian Schieffelin	F 29:50	5-8	0-0	0-3	6	2	8	0	3	10	6	2	1	0	0	15
5	Hunter Tyson	F 34:17	10-16	6-12	3-3	2	8	10	1	2	29	1	0	1	0	0	31
24	PJ Hall	F 30:59	8-11	0-2	0-1	2	3	5	2	3	16	3	0	1	1	0	15
1	Chase Hunter	G 30:53	4-9	4-9	1-2	0	3	3	0	2	13	11	2	1	0	0	21
11	Brevin Galloway	G 23:18	4-10	3-8	4-4	0	4	4	3	2	15	0	2	0	0	1	10
12	Alex Hemenway	11:09	1-4	1-4	0-0	0	1	1	2	0	3	1	0	1	0	0	8
10	Ben Middlebrooks	09:01	1-1	0-0	1-2	1	0	1	3	1	3	0	0	1	0	0	3
2	Dillon Hunter	11:02	0-0	0-0	0-0	0	2	2	2	0	0	4	1	1	0	0	-4
22	RJ Godfrey	04:18	1-1	0-0	0-0	0	2	2	0	0	2	0	0	0	0	0	3
21	Chauncey Wiggins	09:34	0-3	0-0	0-0	0	0	0	1	0	0	1	0	0	0	2	-5
0	Josh Beadle	05:39	0-2	0-1	0-0	0	1	1	1	0	0	1	0	0	0	0	-7
Team						1	0	1			0		0				
Totals			34-65	14-36	9-15	12	26	38	15	13	91	28	7	7	1	3	18

Shooting By Period		
1 st FG%	18-35	51.4%
3PT%	8-20	40.0%
FT%	1-2	50%
2 nd FG%	16-30	53.3%
3PT%	6-16	37.5%
FT%	8-13	61.5%
GMFG%	34-65	52.3%
3PT%	14-36	38.9%
FT%	9-15	60.0%

Dead Ball Rebounds: 4, 0

Technical Fouls: NONE

	CUS	CLE
Biggest lead	0 (1 st 20:00)	25 (2 nd 6:19)
Best Scoring Run	7 (1 st 3:20)	11 (2 nd 14:03)
Lead Changes	0	
Times Tied	0	
Time with Lead	00:00	39:12

Points from	CUS	CLE
Turnovers	10	19
Paint	26	38
Second Chance	9	10
Fast Breaks	9	12
Bench	15	8

	Period by Period Scoring		
	1st	2nd	TOT
CUS	32	41	73
CLE	45	46	91





Period 1

Period Starters:

CLE	1 Hunter C	4 Schieffelin I	5 Tyson H	11 Galloway B	24 Hall P
CUS	0 Bell C	1 Brown M	3 Mintz J	11 Girard III J	14 Edwards J

Game Time	CLE	Score	Diff	CUS
20:00	24 HALL P jumpball won			14 EDWARDS J jumpball lost
19:43	5 TYSON H 3pt FG , jump shot missed			
19:41	24 HALL P offensive rebound (1)			
19:31	11 GALLOWAY B 3pt FG second chance, jump shot missed			
19:29	4 SCHIEFFELIN I offensive rebound (1)			
19:19	1 HUNTER C 3pt FG second chance, jump shot missed			
19:17	4 SCHIEFFELIN I offensive rebound (2)			
19:12	1 HUNTER C 3pt FG second chance, jump shot made (3)	3-0	3	
19:12	4 SCHIEFFELIN I assist (1)			
19:01				11 GIRARD III J turnover lost ball (1)
18:39	11 GALLOWAY B 2pt FG from turnover in the paint, jump shot made (2)	5-0	5	
18:18		5-2	3	0 BELL C 2pt FG outside the paint, jump shot made (2)
17:44	11 GALLOWAY B 2pt FG in the paint, layup blocked			
17:44				1 BROWN M block (1)
17:41				0 BELL C defensive rebound (1)
17:33				11 GIRARD III J 3pt FG , jump shot missed
17:32				1 BROWN M offensive rebound (1)
17:33	24 HALL P foul shooting (1 - 1)			1 BROWN M foul drawn (1)
17:33		5-3	2	1 BROWN M free throw 1 - 2 made (1)
17:33				1 BROWN M free throw 2 - 2 missed
17:32	24 HALL P defensive rebound (2)			
17:17	1 HUNTER C 3pt FG , jump shot made (6)	8-3	5	
17:17	12 HEMENWAY A assist (1)			
16:59				3 MINTZ J turnover out of bounds (1)
16:44	5 TYSON H 3pt FG from turnover, jump shot made (3)	11-3	8	
16:44	4 SCHIEFFELIN I assist (2)			
16:24				11 GIRARD III J 3pt FG , jump shot missed
16:22	5 TYSON H defensive rebound (1)			
16:00	24 HALL P 2pt FG in the paint, jump shot made (2)	13-3	10	
16:00	1 HUNTER C assist (1)			
15:46	12 HEMENWAY A foul shooting (1 - 2)			3 MINTZ J foul drawn (1)
15:46	Timeout media			
15:46				3 MINTZ J free throw 1 - 2 missed
15:46				offensive dead ball rebound (1)
15:46		13-4	9	3 MINTZ J free throw 2 - 2 made (1)
15:30	10 MIDDLEBROOKS B foul drawn (1)			24 COPELAND Q foul shooting (1 - 1)
15:30	10 MIDDLEBROOKS B free throw 1 - 2 missed			
15:30	offensive dead ball rebound (1)			
15:30	10 MIDDLEBROOKS B free throw 2 - 2 made (1)	14-4	10	
15:16				3 MINTZ J 2pt FG in the paint, layup missed
15:14				14 EDWARDS J offensive rebound (1)
15:12		14-6	8	1 BROWN M 2pt FG second chance in the paint, layup made (3)





Official Basketball Play by Play - First Half
Syracuse at Clemson
 02/22/23 Littlejohn Coliseum, Clemson
 2022-23 Clemson Men's Basketball

Game Time: 7:00 PM
Game Duration: 1:54
Attendance: 7,149

Officials: Ted Valentine, Bert Smith, Raymond Styons

Game Time	CLE	Score	Diff	CUS
15:12				24 COPELAND Q assist (1)
14:56	1 HUNTER C 3pt FG , jump shot missed			
14:53				14 EDWARDS J defensive rebound (2)
14:41				11 GIRARD III J 2pt FG in the paint, layup missed
14:39	4 SCHIEFFELIN I defensive rebound (3)			
14:29	12 HEMENWAY A 3pt FG , jump shot missed			
14:27				3 MNTZ J defensive rebound (1)
14:24		14-9	5	11 GIRARD III J 3pt FG fast break, jump shot made (3)
14:24				3 MNTZ J assist (1)
14:01	5 TYSON H 3pt FG , jump shot made (6)	17-9	8	
14:01	1 HUNTER C assist (2)			
13:49	12 HEMENWAY A foul personal (2 - 3)			3 MNTZ J foul drawn (2)
13:32	4 SCHIEFFELIN I steal (1)			3 MNTZ J turnover lost ball (2)
13:22	11 GALLOWAY B 3pt FG from turnover, jump shot missed			
13:20				14 EDWARDS J defensive rebound (3)
13:06		17-12	5	3 MNTZ J 3pt FG , jump shot made (4)
13:06				14 EDWARDS J assist (1)
12:41	1 HUNTER C 3pt FG , jump shot missed			
12:39	10 MIDDLEBROOKS B offensive rebound (1)			
12:29	1 HUNTER C turnover bad pass (1)			13 WILLIAMS B steal (1)
12:24		17-14	3	24 COPELAND Q 2pt FG fast break from turnover in the paint, layup made (2)
12:08	5 TYSON H 3pt FG , jump shot made (9)	20-14	6	
12:08	1 HUNTER C assist (3)			
11:44				13 WILLIAMS B 2pt FG in the paint, jump shot missed
11:42	11 GALLOWAY B defensive rebound (1)			
11:23	1 HUNTER C 3pt FG , jump shot missed			
11:21	5 TYSON H offensive rebound (2)			
11:20	5 TYSON H 2pt FG second chance in the paint, jump shot made (11)	22-14	8	
11:01		22-16	6	13 WILLIAMS B 2pt FG outside the paint, jump shot made (2)
10:42	5 TYSON H 3pt FG , jump shot made (14)	25-16	9	
10:42	1 HUNTER C assist (4)			
10:39				Timeout 30 Sec
10:32				3 MNTZ J 2pt FG in the paint, jump shot missed
10:29	22 GODFREY R defensive rebound (1)			
10:03	22 GODFREY R 2pt FG in the paint, layup made (2)	27-16	11	
10:03	24 HALL P assist (1)			
09:46	2 HUNTER D steal (1)			14 EDWARDS J turnover lost ball (1)
09:22	24 HALL P 2pt FG from turnover in the paint, jump shot made (4)	29-16	13	
09:22	2 HUNTER D assist (1)			
09:02				24 COPELAND Q 3pt FG , jump shot missed
09:00	11 GALLOWAY B defensive rebound (2)			
08:50	2 HUNTER D turnover bad pass (1)			14 EDWARDS J steal (1)
08:34				24 COPELAND Q 2pt FG from turnover in the paint, jump shot missed
08:32	22 GODFREY R defensive rebound (2)			
08:15	24 HALL P 2pt FG in the paint, jump shot made (6)	31-16	15	
08:15	2 HUNTER D assist (2)			





Official Basketball Play by Play - First Half
Syracuse at Clemson
 02/22/23 Littlejohn Coliseum, Clemson
 2022-23 Clemson Men's Basketball

Game Time: 7:00 PM
Game Duration: 1:54
Attendance: 7,149

Officials: Ted Valentine, Bert Smith, Raymond Styons

Game Time	CLE	Score	Diff	CUS
08:04	2 HUNTER D foul personal (1 - 4)			11 GIRARD III J foul drawn (1)
07:55	10 MIDDLEBROOKS B foul personal (1 - 5)			14 EDWARDS J foul drawn (1)
07:55	Timeout media			
07:40				11 GIRARD III J 2pt FG outside the paint, jump shot missed
07:39	4 SCHIEFFELIN I defensive rebound (4)			
07:40	4 SCHIEFFELIN I turnover lost ball (1)			
07:33				3 MNTZ J 2pt FG from turnover outside the paint, jump shot missed
07:30	1 HUNTER C defensive rebound (1)			
07:22	4 SCHIEFFELIN I turnover 3 seconds (2)			
06:55		31-18	13	11 GIRARD III J 2pt FG from turnover in the paint, jump shot made (5)
06:36	24 HALL P 3pt FG , jump shot missed			
06:30				3 MNTZ J defensive rebound (2)
06:22				13 WILLIAMS B 3pt FG , jump shot missed
06:20	24 HALL P defensive rebound (3)			
06:11	4 SCHIEFFELIN I 2pt FG in the paint, layup made (2)	33-18	15	
06:11	24 HALL P assist (2)			
06:01	11 GALLOWAY B foul personal (1 - 6)			3 MNTZ J foul drawn (3)
05:47	21 WGGINS C foul personal (1 - 7)			0 BELL C foul drawn (1)
05:47		33-19	14	0 BELL C 1&1 free throw 1 made (3)
05:47		33-20	13	0 BELL C 1&1 free throw 2 made (4)
05:17	5 TYSON H 2pt FG outside the paint, jump shot made (16)	35-20	15	
05:05	24 HALL P steal (1)			11 GIRARD III J turnover bad pass (2)
04:58	11 GALLOWAY B 3pt FG fast break from turnover, jump shot made (5)	38-20	18	
04:58	1 HUNTER C assist (5)			
04:53				Timeout 30 Sec
04:33				0 BELL C 2pt FG outside the paint, jump shot missed
04:31				1 BROWN M offensive rebound (2)
04:30				1 BROWN M 2pt FG second chance in the paint, layup blocked
04:30	24 HALL P block (1)			
04:30				offensive rebound (9)
04:19				14 EDWARDS J 2pt FG second chance outside the paint, jump shot missed
04:19	5 TYSON H defensive rebound (3)			
04:19	2 HUNTER D foul loose ball (2 - 8)			1 BROWN M foul drawn (2)
04:19		38-21	17	1 BROWN M 1&1 free throw 1 made (4)
04:19		38-22	16	1 BROWN M 1&1 free throw 2 made (5)
04:05	11 GALLOWAY B foul offensive (2 - 9)			14 EDWARDS J foul drawn (2)
04:05	11 GALLOWAY B turnover offensive (1)			
03:48		38-24	14	3 MNTZ J 2pt FG from turnover outside the paint, jump shot made (6)
03:27	0 BEADLE J 2pt FG in the paint, jump shot missed			
03:26				3 MNTZ J defensive rebound (3)
03:20		38-27	11	3 MNTZ J 3pt FG , jump shot made (9)
03:14	Timeout 30 Sec			
03:02	24 HALL P 2pt FG in the paint, layup made (8)	40-27	13	
03:02	4 SCHIEFFELIN I assist (3)			
02:47				13 WILLIAMS B 3pt FG , jump shot missed





Official Basketball Play by Play - First Half
Syracuse at Clemson
 02/22/23 Littlejohn Coliseum, Clemson
 2022-23 Clemson Men's Basketball

Game Time: 7:00 PM
Game Duration: 1:54
Attendance: 7,149

Officials: Ted Valentine, Bert Smith, Raymond Styons

Game Time	CLE	Score	Diff	CUS
02:45	5 TYSON H defensive rebound (4)			
02:24	0 BEADLE J 3pt FG , jump shot missed			
02:22	5 TYSON H offensive rebound (5)			
02:17	4 SCHIEFFELIN I 2pt FG second chance in the paint, jump shot missed			
02:15				14 EDWARDS J defensive rebound (4)
02:05				3 MINTZ J 2pt FG outside the paint, jump shot missed
02:03	0 BEADLE J defensive rebound (1)			
01:53	5 TYSON H 3pt FG , jump shot made (19)	43-27	16	
01:53	0 BEADLE J assist (1)			
01:34				0 BELL C turnover travel (1)
01:13	4 SCHIEFFELIN I 2pt FG from turnover in the paint, jump shot missed			
01:10	4 SCHIEFFELIN I offensive rebound (5)			
01:09	5 TYSON H 3pt FG from turnover second chance, jump shot missed			
01:07				5 TAYLOR J defensive rebound (1)
00:51		43-30	13	11 GIRARD III J 3pt FG , jump shot made (8)
00:51	0 BEADLE J foul shooting (1 - 10)			11 GIRARD III J foul drawn (2)
00:51		43-31	12	11 GIRARD III J free throw 1 - 1 made (9)
00:34	24 HALL P 2pt FG in the paint, layup missed			
00:31	4 SCHIEFFELIN I offensive rebound (6)			
00:31	4 SCHIEFFELIN I 2pt FG second chance in the paint, layup made (4)	45-31	14	
00:05	5 TYSON H foul shooting (1 - 11)			14 EDWARDS J foul drawn (3)
00:05				14 EDWARDS J free throw 1 - 2 missed
00:05				offensive dead ball rebound (2)
00:05		45-32	13	14 EDWARDS J free throw 2 - 2 made (1)
00:04	1 HUNTER C foul drawn (1)			3 MINTZ J foul personal (1 - 2)
00:02	5 TYSON H 3pt FG , jump shot missed			
00:02	offensive dead ball rebound (2)			
END OF PERIOD				
CLE 45-32 CUS				





Syracuse - 32

NO.	Name	Min	FG			Rebounds			Fouls		TP	AS	TO	ST	Blocks		+/-
			M-A	3P	FT	OR	DR	TOT	PF	FD					BS	BA	
0	Chris Bell	F 08:41	1-2	0-0	2-2	0	1	1	0	1	4	0	1	0	0	0	-11
1	Maliq Brown	F 09:56	1-2	0-0	3-4	2	0	2	0	2	5	0	0	0	1	1	-9
14	Jesse Edwards	C 20:00	0-1	0-0	1-2	1	3	4	0	3	1	1	1	1	0	0	-13
3	Judah Mintz	G 20:00	3-7	2-2	1-2	0	3	3	1	3	9	1	2	0	0	0	-13
11	Joseph Girard III	G 17:15	3-7	2-4	1-1	0	0	0	0	2	9	0	2	0	0	0	-14
24	Quadir Copeland	07:42	1-3	0-1	0-0	0	0	0	1	0	2	1	0	0	0	0	-5
13	Benny Williams	12:07	1-4	0-2	0-0	0	0	0	0	0	2	0	0	1	0	0	-3
5	Justin Taylor	04:19	0-0	0-0	0-0	0	1	1	0	0	0	0	0	0	0	0	4
Team						1	0	1			0		0				
Totals			10-26	4-9	8-11	4	8	12	2	11	32	3	6	2	1	1	-13

Shooting By Period		
1st FG%	10-26	38.5%
3PT%	4-9	44.4%
FT%	8-11	72.7%
GMFG%	10-26	38.5%
3PT%	4-9	44.4%
FT%	8-11	72.7%

Dead Ball Rebounds: 2, 0

Technical Fouls: NONE

Clemson - 45

NO.	Name	Min	FG			Rebounds			Fouls		TP	AS	TO	ST	Blocks		+/-
			M-A	3P	FT	OR	DR	TOT	PF	FD					BS	BA	
4	Ian Schieffelin	F 14:37	2-4	0-0	0-0	4	2	6	0	0	4	3	2	1	0	0	10
5	Hunter Tyson	F 17:52	7-10	5-8	0-0	2	3	5	1	0	19	0	0	0	0	0	15
24	PJ Hall	F 14:44	4-6	0-1	0-0	1	2	3	1	0	8	2	0	1	1	0	14
1	Chase Hunter	G 16:42	2-6	2-6	0-0	0	1	1	0	1	6	5	1	0	0	0	8
11	Brevin Galloway	G 12:11	2-5	1-3	0-0	0	2	2	2	0	5	0	1	0	0	1	10
12	Alex Hemenway	03:44	0-1	0-1	0-0	0	0	0	2	0	0	1	0	0	0	0	6
10	Ben Middlebrooks	05:16	0-0	0-0	1-2	1	0	1	1	1	1	0	0	0	0	0	-1
2	Dillon Hunter	03:18	0-0	0-0	0-0	0	0	0	2	0	0	2	1	1	0	0	5
22	RJ Godfrey	02:44	1-1	0-0	0-0	0	2	2	0	0	2	0	0	0	0	0	6
21	Chauncey Wiggins	04:47	0-0	0-0	0-0	0	0	0	1	0	0	0	0	0	0	0	-5
0	Josh Beadle	04:05	0-2	0-1	0-0	0	1	1	1	0	0	1	0	0	0	0	-3
Team						0	0	0			0		0				
Totals			18-35	8-20	1-2	8	13	21	11	2	45	14	5	3	1	1	13

Shooting By Period		
1st FG%	18-35	51.4%
3PT%	8-20	40.0%
FT%	1-2	50%
GMFG%	18-35	51.4%
3PT%	8-20	40.0%
FT%	1-2	50.0%

Dead Ball Rebounds: 2, 0

Technical Fouls: NONE

	CUS	CLE
Biggest lead	0 (1 st 20:00)	18 (1 st 4:58)
Best Scoring Run	7 (1 st 3:20)	9 (1 st 8:15)
Lead Changes	0	
Times Tied	0	
Time with Lead	00:00	19:12

	CUS	CLE
Points from		
Turnovers	6	10
Paint	6	18
Second Chance	3	7
Fast Breaks	5	3
Bench	4	3

	Period by Period Scoring		
	1st	2nd	TOT
CUS	32	41	73
CLE	45	46	91



Period 2

Period Starters:

CLE	1 Hunter C	4 Schieffelin I	5 Tyson H	11 Galloway B	24 Hall P
CUS	0 Bell C	1 Brown M	3 Mintz J	11 Girard III J	14 Edwards J

Game Time	CLE	Score	Diff	CUS
19:43		45-34	11	3 MINTZ J 2pt FG in the paint, jump shot made (11)
19:21	11 GALLOWAY B 3pt FG , jump shot made (8)	48-34	14	
19:21	1 HUNTER C assist (6)			
18:54				14 EDWARDS J 2pt FG outside the paint, jump shot missed
18:52	5 TYSON H defensive rebound (6)			
18:35	1 HUNTER C 3pt FG , jump shot missed			
18:32				11 GIRARD III J defensive rebound (1)
18:22	5 TYSON H steal (1)			1 BROWN M turnover lost ball (1)
18:15	11 GALLOWAY B 3pt FG fast break from turnover, jump shot made (11)	51-34	17	
18:15	1 HUNTER C assist (7)			
17:52		51-37	14	3 MINTZ J 3pt FG , jump shot made (14)
17:52				14 EDWARDS J assist (2)
17:37	4 SCHIEFFELIN I foul drawn (1)			0 BELL C foul shooting (1 - 1)
17:37	4 SCHIEFFELIN I free throw 1 - 2 missed			
17:37	offensive dead ball rebound (3)			
17:37	4 SCHIEFFELIN I free throw 2 - 2 missed			
17:36				14 EDWARDS J defensive rebound (5)
17:29	11 GALLOWAY B foul shooting (3 - 1)			3 MINTZ J foul drawn (4)
17:29		51-38	13	3 MINTZ J free throw 1 - 3 made (15)
17:29		51-39	12	3 MINTZ J free throw 2 - 3 made (16)
17:29				3 MINTZ J free throw 3 - 3 missed
17:28	5 TYSON H defensive rebound (7)			
17:09	24 HALL P 2pt FG in the paint, layup made (10)	53-39	14	
17:09	5 TYSON H assist (1)			
17:09	24 HALL P foul drawn (1)			14 EDWARDS J foul shooting (1 - 2)
17:09	24 HALL P free throw 1 - 1 missed			
17:07				13 WILLIAMS B defensive rebound (1)
16:55		53-41	12	3 MINTZ J 2pt FG outside the paint, jump shot made (18)
16:35	24 HALL P 2pt FG in the paint, dunk, made (12)	55-41	14	
16:35	4 SCHIEFFELIN I assist (4)			
16:19		55-44	11	0 BELL C 3pt FG , jump shot made (7)
16:04	5 TYSON H 3pt FG , jump shot missed			
16:02				0 BELL C defensive rebound (2)
15:55				0 BELL C 2pt FG in the paint, jump shot missed
15:53	24 HALL P defensive rebound (4)			
15:34	5 TYSON H foul drawn (1)			3 MINTZ J foul shooting (2 - 3)
15:34	Timeout media			
15:34	5 TYSON H free throw 1 - 3 made (20)	56-44	12	
15:34	5 TYSON H free throw 2 - 3 made (21)	57-44	13	
15:34	5 TYSON H free throw 3 - 3 made (22)	58-44	14	
15:16				11 GIRARD III J 3pt FG , jump shot missed
15:14	5 TYSON H defensive rebound (8)			





Official Basketball Play by Play - Second Half
Syracuse at Clemson
 02/22/23 Littlejohn Coliseum, Clemson
 2022-23 Clemson Men's Basketball

Game Time: 7:00 PM
Game Duration: 1:54
Attendance: 7,149

Officials: Ted Valentine, Bert Smith, Raymond Styons

Game Time	CLE	Score	Diff	CUS
15:02	1 HUNTER C 3pt FG , jump shot made (9)	61-44	17	
15:02	4 SCHIEFFELIN I assist (5)			
14:51				3 MINTZ J 2pt FG outside the paint, jump shot missed
14:49	5 TYSON H defensive rebound (9)			
14:26	12 HEMENWAY A 3pt FG , jump shot made (3)	64-44	20	
14:26	4 SCHIEFFELIN I assist (6)			
14:17				Timeout 30 Sec
14:07	10 MIDDLEBROOKS B steal (1)			11 GIRARD III J turnover bad pass (3)
14:03	5 TYSON H 2pt FG fast break from turnover in the paint, dunk, made (24)	66-44	22	
13:45		66-46	20	14 EDWARDS J 2pt FG in the paint, layup made (3)
13:45				13 WILLIAMS B assist (1)
13:45	10 MIDDLEBROOKS B foul shooting (2 - 2)			14 EDWARDS J foul drawn (4)
13:45		66-47	19	14 EDWARDS J free throw 1 - 1 made (4)
13:32	5 TYSON H 3pt FG , jump shot missed			
13:29				11 GIRARD III J defensive rebound (2)
13:23	10 MIDDLEBROOKS B foul shooting (3 - 3)			13 WILLIAMS B foul drawn (1)
13:23		66-48	18	13 WILLIAMS B free throw 1 - 2 made (3)
13:23				13 WILLIAMS B free throw 2 - 2 missed
13:22	5 TYSON H defensive rebound (10)			
13:05	21 WIGGINS C 2pt FG in the paint, layup blocked			
13:05				14 EDWARDS J block (1)
13:05	offensive rebound (28)			
13:00	12 HEMENWAY A 3pt FG second chance, jump shot missed			
12:58				3 MINTZ J defensive rebound (4)
12:49	12 HEMENWAY A steal (1)			14 EDWARDS J turnover lost ball (2)
12:29	24 HALL P 2pt FG from turnover in the paint, layup made (14)	68-48	20	
12:29	1 HUNTER C assist (8)			
12:06				11 GIRARD III J 3pt FG , jump shot missed
12:02				14 EDWARDS J offensive rebound (6)
12:02		68-50	18	14 EDWARDS J 2pt FG second chance in the paint, dunk, made (6)
11:51	21 WIGGINS C 2pt FG in the paint, layup missed			
11:49				0 BELL C defensive rebound (3)
11:44				3 MINTZ J 2pt FG in the paint, dunk, missed
11:41	12 HEMENWAY A defensive rebound (1)			
11:23	12 HEMENWAY A 3pt FG , jump shot missed			
11:20				14 EDWARDS J defensive rebound (7)
11:12		68-52	16	11 GIRARD III J 2pt FG outside the paint, jump shot made (11)
10:55	5 TYSON H 2pt FG fast break in the paint, layup made (26)	70-52	18	
10:29				13 WILLIAMS B 3pt FG , jump shot missed
10:27	1 HUNTER C defensive rebound (2)			
10:10	1 HUNTER C 3pt FG , jump shot made (12)	73-52	21	
10:10	21 WIGGINS C assist (1)			
10:10	Timeout 30 Sec			
09:47				10 TORRENCE S 2pt FG in the paint, jump shot missed
09:41	2 HUNTER D defensive rebound (1)			
09:28	4 SCHIEFFELIN I 2pt FG in the paint, dunk, made (6)	75-52	23	





Official Basketball Play by Play - Second Half
Syracuse at Clemson
 02/22/23 Littlejohn Coliseum, Clemson
 2022-23 Clemson Men's Basketball

Game Time: 7:00 PM
Game Duration: 1:54
Attendance: 7,149

Officials: Ted Valentine, Bert Smith, Raymond Styons

Game Time	CLE	Score	Diff	CUS
09:28	2 HUNTER D assist (3)			
08:55				10 TORRENCE S 3pt FG , jump shot missed
08:51	2 HUNTER D defensive rebound (2)			
08:28	11 GALLOWAY B 3pt FG , jump shot missed			
08:26				10 TORRENCE S defensive rebound (1)
08:13				10 TORRENCE S 2pt FG outside the paint, jump shot missed
08:11	11 GALLOWAY B defensive rebound (3)			
07:53	4 SCHIEFFELIN I 2pt FG outside the paint, jump shot missed			
07:52	24 HALL P offensive rebound (5)			
07:52	24 HALL P foul drawn (2)			55 HIMAM foul personal (1 - 4)
07:52	Timeout media			
07:35	24 HALL P foul drawn (3)			55 HIMAM foul personal (2 - 5)
07:31	24 HALL P 3pt FG second chance, jump shot missed			
07:28				14 EDWARDS J defensive rebound (8)
07:23				3 MNTZ J 2pt FG in the paint, layup missed
07:19				14 EDWARDS J offensive rebound (9)
07:19		75-54	21	14 EDWARDS J 2pt FG second chance in the paint, dunk, made (8)
07:12	4 SCHIEFFELIN I foul drawn (2)			24 COPELAND Q foul personal (2 - 6)
06:53	4 SCHIEFFELIN I 2pt FG in the paint, layup made (8)	77-54	23	
06:53	24 HALL P assist (3)			
06:40	5 TYSON H foul drawn (2)			24 COPELAND Q foul offensive (3 - 7)
06:40				24 COPELAND Q turnover offensive (1)
06:19	4 SCHIEFFELIN I 2pt FG from turnover in the paint, jump shot made (10)	79-54	25	
06:19	1 HUNTER C assist (9)			
06:01				10 TORRENCE S 3pt FG , jump shot missed
05:59				14 EDWARDS J offensive rebound (10)
05:48	24 HALL P foul personal (2 - 4)			13 WILLIAMS B foul drawn (2)
05:38		79-56	23	14 EDWARDS J 2pt FG second chance in the paint, layup made (10)
05:38				10 TORRENCE S assist (1)
05:23	11 GALLOWAY B turnover bad pass (2)			10 TORRENCE S steal (1)
05:20		79-58	21	10 TORRENCE S 2pt FG fast break from turnover in the paint, dunk, made (2)
05:04	1 HUNTER C foul drawn (2)			14 EDWARDS J foul shooting (2 - 8)
05:04	1 HUNTER C free throw 1 - 2 missed			
05:04	offensive dead ball rebound (4)			
05:04	1 HUNTER C free throw 2 - 2 made (13)	80-58	22	
04:53		80-60	20	13 WILLIAMS B 2pt FG outside the paint, jump shot made (5)
04:23	11 GALLOWAY B 3pt FG , jump shot missed			
04:21				10 TORRENCE S defensive rebound (2)
04:14		80-63	17	3 MNTZ J 3pt FG , jump shot made (21)
04:14				10 TORRENCE S assist (2)
03:47	4 SCHIEFFELIN I foul drawn (3)			14 EDWARDS J foul personal (3 - 9)
03:47	Timeout media			
03:47	4 SCHIEFFELIN I 1&1 free throw 1 missed			
03:46				13 WILLIAMS B defensive rebound (2)





Official Basketball Play by Play - Second Half
Syracuse at Clemson
 02/22/23 Littlejohn Coliseum, Clemson
 2022-23 Clemson Men's Basketball

Game Time: 7:00 PM
Game Duration: 1:54
Attendance: 7,149

Officials: Ted Valentine, Bert Smith, Raymond Styons

Game Time	CLE	Score	Diff	CUS
03:36	1 HUNTER C steal (1)			3 MINTZ J turnover bad pass (3)
03:28	1 HUNTER C turnover travel (2)			
03:14		80-65	15	5 TAYLOR J 2pt FG from turnover outside the paint, jump shot made (2)
02:53	5 TYSON H 3pt FG , jump shot missed			
02:51	4 SCHIEFFELIN I offensive rebound (7)			
02:49	11 GALLOWAY B 3pt FG second chance, jump shot missed			
02:47	4 SCHIEFFELIN I offensive rebound (8)			
02:37	5 TYSON H 3pt FG second chance, jump shot made (29)	83-65	18	
02:37	1 HUNTER C assist (10)			
02:20		83-67	16	14 EDWARDS J 2pt FG in the paint, dunk, made (12)
02:20				10 TORRENCE S assist (3)
02:14	11 GALLOWAY B foul drawn (1)			13 WILLIAMS B foul personal (1 - 10)
02:14	11 GALLOWAY B free throw 1 - 2 made (12)	84-67	17	
02:14	11 GALLOWAY B free throw 2 - 2 made (13)	85-67	18	
02:01				5 TAYLOR J 3pt FG , jump shot missed
01:59	1 HUNTER C defensive rebound (3)			
01:57	24 HALL P 2pt FG fast break in the paint, dunk, made (16)	87-67	20	
01:57	1 HUNTER C assist (11)			
01:35				14 EDWARDS J 2pt FG in the paint, layup missed
01:33	11 GALLOWAY B defensive rebound (4)			
01:34	11 GALLOWAY B foul drawn (2)			10 TORRENCE S foul personal (1 - 11)
01:34	11 GALLOWAY B free throw 1 - 2 made (14)	88-67	21	
01:34	11 GALLOWAY B free throw 2 - 2 made (15)	89-67	22	
01:24		89-69	20	13 WILLIAMS B 2pt FG in the paint, jump shot made (7)
00:53	21 WIGGINS C 2pt FG in the paint, layup blocked			
00:53				5 TAYLOR J block (1)
00:48				10 TORRENCE S defensive rebound (3)
00:47		89-71	18	3 MINTZ J 2pt FG fast break in the paint, layup made (23)
00:23	10 MIDDLEBROOKS B 2pt FG in the paint, layup made (3)	91-71	20	
00:23	2 HUNTER D assist (4)			
00:16		91-73	18	13 WILLIAMS B 2pt FG in the paint, layup made (9)
00:16				10 TORRENCE S assist (4)
END OF GAME				
CLE 91-73 CUS				





Officials: Ted Valentine, Bert Smith, Raymond Styons

Syracuse - 41

NO.	Name	Min	FG			Rebounds			Fouls		TP	AS	TO	ST	Blocks		+/-
			M-A	3P	FT	OR	DR	TOT	PF	FD					BS	BA	
0	Chris Bell	F 09:50	1-2	1-1	0-0	0	2	2	1	0	3	0	0	0	0	0	-8
1	Maliq Brown	F 06:21	0-0	0-0	0-0	0	0	0	0	0	0	0	1	0	0	0	-3
14	Jesse Edwards	C 15:50	5-7	0-0	1-1	3	3	6	3	1	11	1	1	0	1	0	-6
3	Judah Mintz	G 17:25	5-8	2-2	2-3	0	1	1	1	1	14	0	1	0	0	0	-3
11	Joseph Girard III	G 12:25	1-3	0-2	0-0	0	2	2	0	0	2	0	1	0	0	0	-10
13	Benny Williams	13:39	3-4	0-1	1-2	0	2	2	1	2	7	1	0	0	0	0	-2
55	Mounir Hima	04:10	0-0	0-0	0-0	0	0	0	2	0	0	0	0	0	0	0	1
10	Symir Torrence	10:10	1-5	0-2	0-0	0	3	3	1	0	2	4	0	1	0	0	3
24	Quadir Copeland	03:30	0-0	0-0	0-0	0	0	0	2	0	0	0	1	0	0	0	-2
5	Justin Taylor	06:40	1-2	0-1	0-0	0	0	0	0	0	2	0	0	0	1	0	5
Team						0	0	0			0						
Totals			17-31	3-9	4-6	3	13	16	11	4	41	6	5	1	2	0	-5

Shooting By Period		
2 nd FG%	17-31	54.8%
3PT%	3-9	33.3%
FT%	4-6	66.7%
GMFG%	17-31	54.8%
3PT%	3-9	33.3%
FT%	4-6	66.7%

Dead Ball Rebounds: 0, 0

Technical Fouls: NONE

Clemson - 46

NO.	Name	Min	FG			Rebounds			Fouls		TP	AS	TO	ST	Blocks		+/-
			M-A	3P	FT	OR	DR	TOT	PF	FD					BS	BA	
4	Ian Schieffelin	F 15:13	3-4	0-0	0-3	2	0	2	0	3	6	3	0	0	0	0	5
5	Hunter Tyson	F 16:25	3-6	1-4	3-3	0	5	5	0	2	10	1	0	1	0	0	16
24	PJ Hall	F 16:15	4-5	0-1	0-1	1	1	2	1	3	8	1	0	0	0	0	1
1	Chase Hunter	G 14:11	2-3	2-3	1-2	0	2	2	0	1	7	6	1	1	0	0	13
11	Brevin Galloway	G 11:07	2-5	2-5	4-4	0	2	2	1	2	10	0	1	0	0	0	0
2	Dillon Hunter	07:44	0-0	0-0	0-0	0	2	2	0	0	0	2	0	0	0	0	-9
10	Ben Middlebrooks	03:45	1-1	0-0	0-0	0	0	0	2	0	2	0	0	1	0	0	4
12	Alex Hemenway	07:25	1-3	1-3	0-0	0	1	1	0	0	3	0	0	1	0	0	2
21	Chauncey Wiggins	04:47	0-3	0-0	0-0	0	0	0	0	0	0	1	0	0	0	2	0
0	Josh Beadle	01:34	0-0	0-0	0-0	0	0	0	0	0	0	0	0	0	0	0	-4
22	RJ Godfrey	01:34	0-0	0-0	0-0	0	0	0	0	0	0	0	0	0	0	0	-3
Team						1	0	1			0						
Totals			16-30	6-16	8-13	4	13	17	4	11	46	14	2	4	0	2	5

Shooting By Period		
2 nd FG%	16-30	53.3%
3PT%	6-16	37.5%
FT%	8-13	61.5%
GMFG%	16-30	53.3%
3PT%	6-16	37.5%
FT%	8-13	61.5%

Dead Ball Rebounds: 2, 0

Technical Fouls: NONE

	CUS	CLE
Biggest lead	0 (1 st 20:00)	25 (2 nd 6:19)
Best Scoring Run	7 (2 nd 3:14)	11 (2 nd 14:03)
Lead Changes	0	
Times Tied	0	
Time with Lead	00:00	19:43

Points from	CUS	CLE
Turnovers	4	9
Paint	20	20
Second Chance	6	3
Fast Breaks	4	9
Bench	11	5

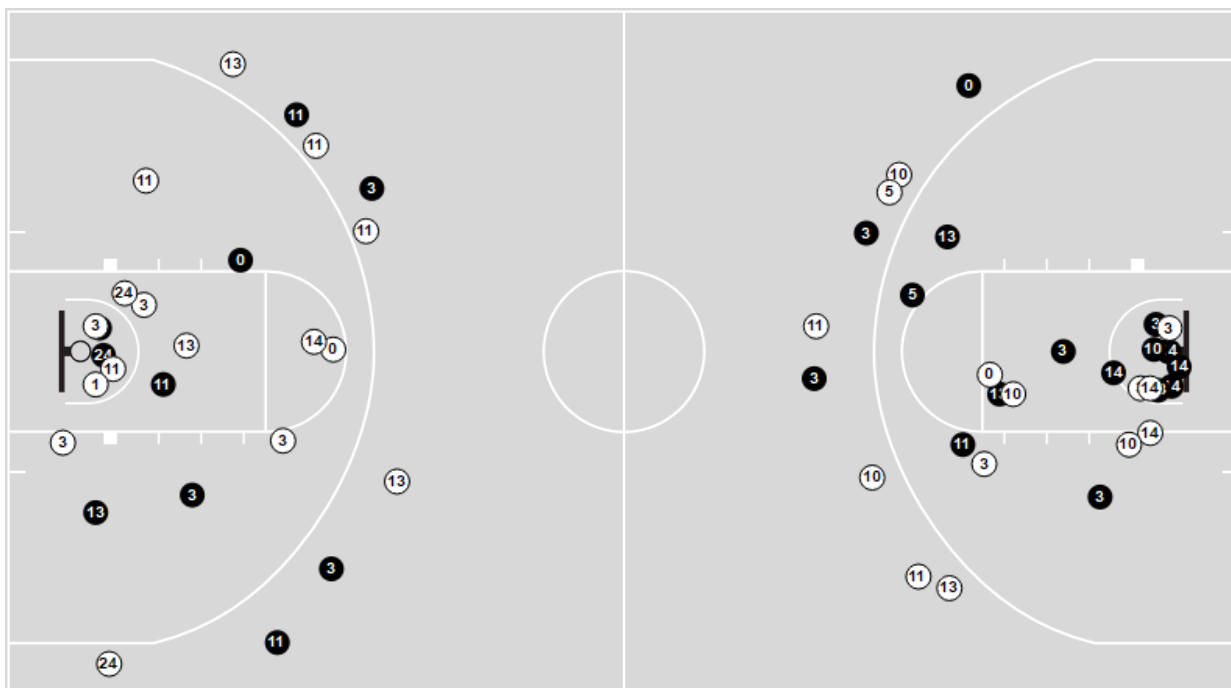
	Period by Period Scoring		
	1st	2nd	TOT
CUS	32	41	73
CLE	45	46	91



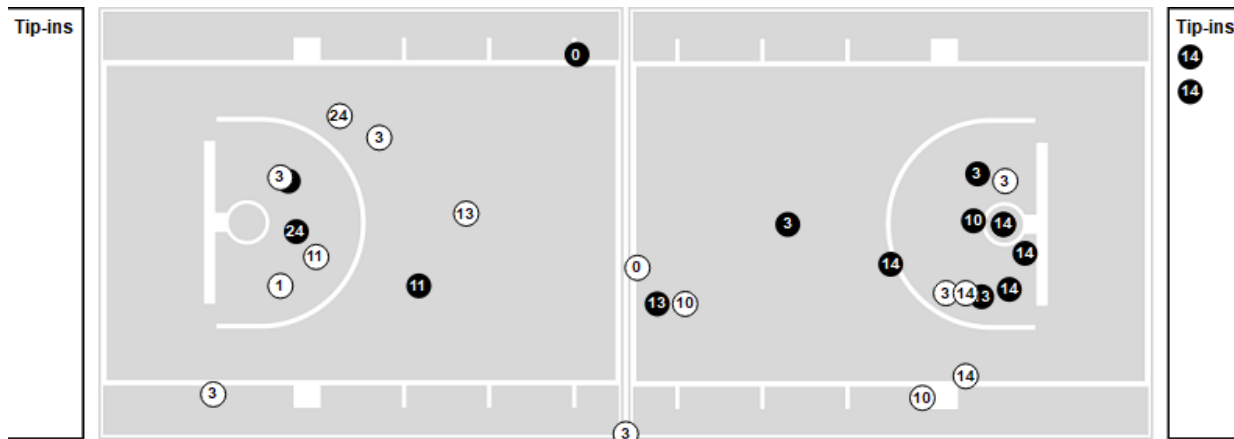


Players => All ; FG Types => All ; Results => All ;
Syracuse

All Field Goals



Shots in the Paint



● Made ○ Missed N - Player Number

Syracuse	M/A	%
Field Goals	27/57	47
2 Points	20/39	51
3 Points	7/18	39
Free Throws	12/17	71

Syracuse	M/A	%
Points in the Paint	26 (13/24)	54
Fast Break Points	9 (4/4)	100
Second Chance Points	9 (5/8)	63
Effective FG%	54	



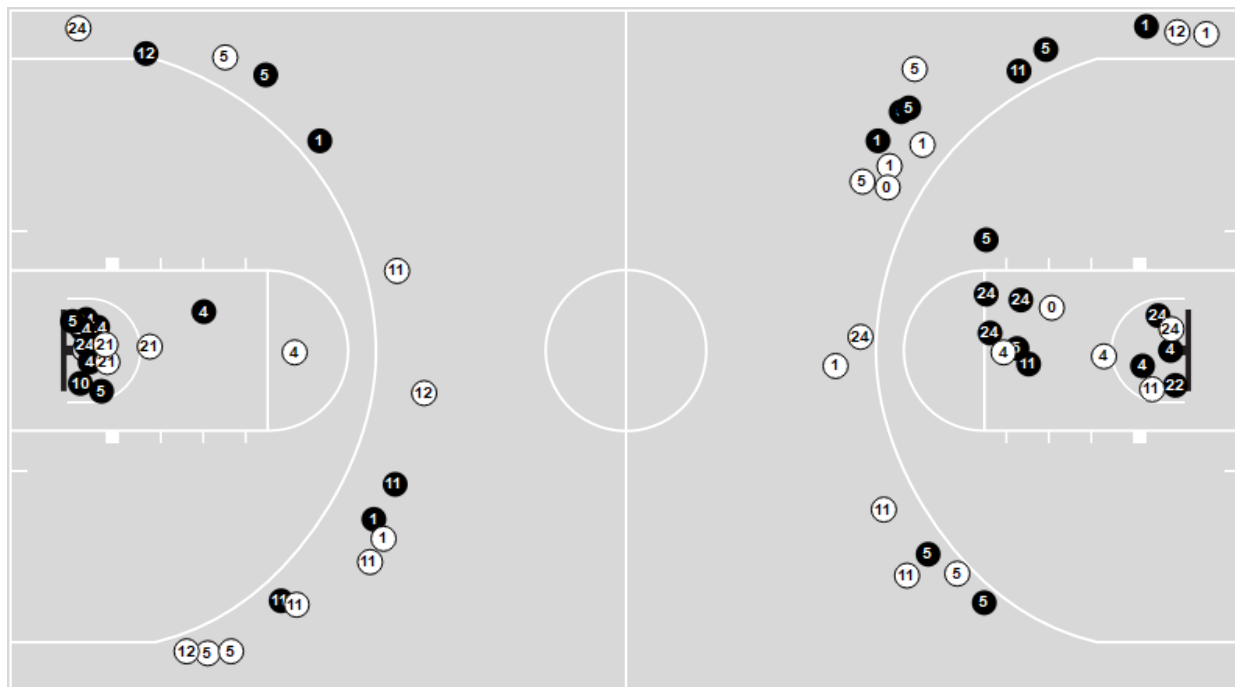


Officials: Ted Valentine, Bert Smith, Raymond Styons

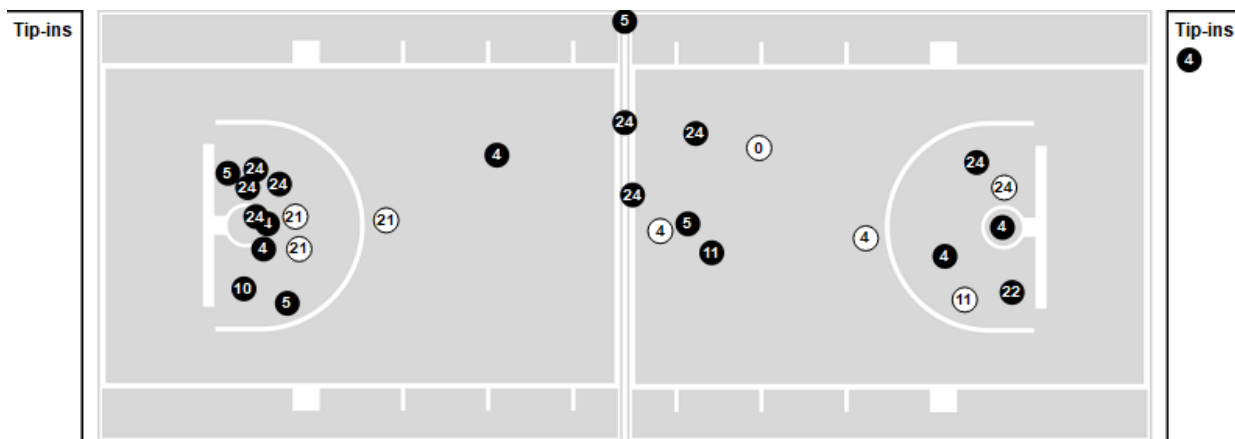
Players => All ; FG Types => All ; Results => All ;

Clemson

All Field Goals



Shots in the Paint



● Made ● Missed N - Player Number

Clemson	M/A	%
Field Goals	34/65	52
2 Points	20/29	69
3 Points	14/36	39
Free Throws	9/15	60

Clemson	M/A	%
Points in the Paint	38 (19/27)	70
Fast Break Points	12 (5/5)	100
Second Chance Points	10 (4/11)	36
Effective FG%	63	

