



Officials: Dee Kantner, John Capolino, Krystle Apellaniz

Clemson - 62

Record: 11-5 (2-2)

NO.	Name	F	Min	FG			3P			FT			Rebounds			Fouls		TP	AS	TO	ST	Blocks		+/-
				M-A	M-A	M-A	OR	DR	TOT	PF	FD	BS	BA											
5	Amari Robinson	F	28:14	5-13	3-4	0-0	3	6	9	2	0	13	1	1	1	1	1	1	1	1	1	1	-17	
12	Hannah Hank	C	23:16	0-3	0-2	0-0	2	1	3	1	2	0	2	1	1	1	2	0	1	1	2	0	-25	
0	Brie Perpignan	G	21:42	3-9	1-3	0-0	1	3	4	4	2	7	2	1	0	0	1	1	0	0	1	1	-12	
2	Daisha Bradford	G	30:07	5-16	3-7	0-0	3	5	8	2	2	13	6	3	2	0	2	0	2	0	2	0	-19	
22	Ruby Whitehorn	G	28:36	6-13	0-0	1-2	2	2	4	1	1	13	1	2	0	0	1	2	0	0	1	1	-31	
24	Ale'Jah Douglas		20:55	0-6	0-4	0-0	0	2	2	1	0	0	1	2	0	0	0	0	0	0	0	0	-23	
21	Eno Inyang		16:23	4-10	0-0	2-3	9	2	11	5	3	10	0	1	1	2	1	1	2	1	1	1	-5	
3	MaKayla Elmore		09:39	0-1	0-1	0-0	0	3	3	2	0	0	0	0	0	0	0	0	0	0	0	0	-9	
15	Kionna Gaines		09:57	0-2	0-1	1-2	0	0	0	0	1	1	2	2	0	0	0	0	0	0	0	0	2	
30	Madi Ott		08:01	1-3	1-3	2-2	0	0	0	0	1	5	0	1	0	0	0	0	0	0	0	0	-10	
4	Weronika Hipp		03:10	0-0	0-0	0-0	0	0	0	0	0	0	0	0	1	0	0	0	0	0	0	0	-6	
Team							1	0	1			0			0									
Totals				24-76	8-25	6-9	21	24	45	18	12	62	15	15	5	5	6						-31	

Technical Fouls::NONE

Shooting By Period		
1st FG%	6-21	28.6%
3PT%	1-6	16.7%
FT%	2-2	100%
2nd FG%	5-21	23.8%
3PT%	1-3	33.3%
FT%	0-1	0%
3rd FG%	9-18	50.0%
3PT%	5-10	50.0%
FT%	1-2	50%
4th FG%	4-16	25.0%
3PT%	1-6	16.7%
FT%	3-4	75%
GM FG%	24-76	31.6%
3PT%	8-25	32.0%
FT%	6-9	66.7%

Dead Ball Rebounds: 1, 0

Florida State - 93

Record: 15-2 (4-0)

NO.	Name	F	Min	FG			3P			FT			Rebounds			Fouls		TP	AS	TO	ST	Blocks		+/-
				M-A	M-A	M-A	OR	DR	TOT	PF	FD	BS	BA											
21	Makayla Timpson	F	15:37	2-8	0-0	1-1	3	4	7	2	1	5	0	1	1	1	3	6					6	
23	Erin Howard	F	21:48	4-10	2-6	0-0	2	2	4	2	0	10	2	2	1	0	0	20					20	
00	Ta'Niya Latson	G	29:08	7-16	2-6	15-15	3	5	8	1	8	31	5	1	0	0	0	23					23	
1	Jazmine Massengill	G	28:26	4-4	1-1	1-2	0	3	3	0	1	10	9	1	0	1	0	27					27	
4	Sara Bejedi	G	20:38	2-7	0-3	1-1	0	3	3	3	3	5	2	2	0	0	2	0					0	
3	O'Mariah Gordon		18:54	1-6	1-2	0-0	1	2	3	1	1	3	2	0	2	0	0	26					26	
32	Valencia Myers		24:23	4-5	0-0	4-4	3	4	7	1	3	12	0	0	0	2	0	25					25	
5	Mariana Valenzuela		18:12	4-7	3-5	0-0	0	3	3	1	0	11	0	1	0	0	0	11					11	
11	Taylor O'Brien		15:27	2-5	1-3	1-2	1	1	2	1	1	6	0	1	3	0	0	14					14	
2	Brianna Turnage		07:27	0-2	0-2	0-0	0	3	3	0	0	0	0	0	0	0	2	0	3				3	
Team							1	1	2			0			0									
Totals				30-70	10-28	23-25	14	31	45	12	18	93	20	9	7	6	5	31						

Technical Fouls::NONE

Shooting By Period		
1st FG%	7-15	46.7%
3PT%	4-8	50.0%
FT%	8-8	100%
2nd FG%	7-20	35.0%
3PT%	2-9	22.2%
FT%	2-3	66.7%
3rd FG%	8-16	50.0%
3PT%	0-4	0.0%
FT%	7-7	100%
4th FG%	8-19	42.1%
3PT%	4-7	57.1%
FT%	6-7	85.7%
GM FG%	30-70	42.9%
3PT%	10-28	35.7%
FT%	23-25	92.0%

Dead Ball Rebounds: 4, 2

	CU	FSU
Biggest lead	2 (1 st 9:29)	31 (4 th 0:10)
Best Scoring Run	6(3 rd 4:43)	14(2 nd 8:24)
Lead Changes	1	
Times Tied	1	
Time with Lead	01:48	36:55

	CU	FSU
Points from		
Turnovers	8	22
Paint	28	34
Second Chance	17	9
Fast Breaks	6	22
Bench	16	32

	Period by Period Scoring				
	1st	2nd	3rd	4th	TOT
CU	15	11	24	12	62
FSU	26	18	23	26	93

**Clemson at Florida State**01/05/23 Donald L. Tucker Center, Tallahassee
2022-23 Women's Basketball**Game Time:** 6:00 PM**Game Duration:** 1:52**Attendance:** 2,009**Officials:** Dee Kantner, John Capolino, Krystle Apellaniz**Period 1****Quarter Starters:**

FSU	00 Latson T	1 Massengill J	4 Bejedi S	21 Timpson M	23 Howard E
CU	0 Perpignan B	2 Bradford D	5 Robinson A	12 Hank H	22 Whitehorn R

Game Time	FSU	Score	Diff	CU
10:00	21 TIMPSON M jumpball won			12 HANK H jumpball lost
09:55	00 LATSON T 2pt FG outside the paint, jump shot missed			
09:53				5 ROBINSON A defensive rebound (1)
09:34				2 BRADFORD D 2pt FG outside the paint, jump shot blocked
09:34	21 TIMPSON M block (1)			
09:29				2 BRADFORD D offensive rebound (1)
09:29		0-2	-2	2 BRADFORD D 2pt FG second chance in the paint, layup made (2)
09:15	21 TIMPSON M 2pt FG in the paint, layup missed			
09:12	23 HOWARD E offensive rebound (1)			
09:07	00 LATSON T 3pt FG second chance, jump shot missed			
09:02				2 BRADFORD D defensive rebound (2)
08:58				2 BRADFORD D 2pt FG in the paint, layup blocked
08:58	1 MASSENGILL J block (1)			
08:55				2 BRADFORD D offensive rebound (3)
08:45				0 PERPIGNAN B 3pt FG second chance, jump shot missed
08:41				12 HANK H offensive rebound (1)
08:28				2 BRADFORD D 3pt FG second chance, jump shot missed
08:24	4 BEJEDI S defensive rebound (1)			
08:21	4 BEJEDI S turnover bad pass (1)			2 BRADFORD D steal (1)
08:01				12 HANK H 3pt FG from turnover, jump shot missed
07:57	1 MASSENGILL J defensive rebound (1)			
07:51	4 BEJEDI S foul drawn (1)			0 PERPIGNAN B foul personal (1 - 1)
07:51	4 BEJEDI S substitution out			
07:51	3 GORDON O substitution in			
07:41	23 HOWARD E 2pt FG in the paint, driving layup made (2)	2-2	0	
07:16				5 ROBINSON A 3pt FG , jump shot missed
07:11	3 GORDON O defensive rebound (1)			
06:55	1 MASSENGILL J 2pt FG outside the paint, jump shot made (2)	4-2	2	
06:55	00 LATSON T assist (1)			
06:55	21 TIMPSON M foul personal (1 - 1)			12 HANK H foul drawn (1)
06:41				5 ROBINSON A 2pt FG outside the paint, jump shot missed
06:41	defensive rebound (5)			
06:41	21 TIMPSON M substitution out			
06:41	32 MYERS V substitution in			
06:41				0 PERPIGNAN B substitution out
06:41				24 DOUGLAS A substitution in
06:34	1 MASSENGILL J 3pt FG , jump shot made (5)	7-2	5	
06:34	23 HOWARD E assist (1)			
06:14				22 WHITEHORN R 2pt FG outside the paint, jump shot missed
06:12	32 MYERS V defensive rebound (1)			
06:06	23 HOWARD E 3pt FG fast break, jump shot made (5)	10-2	8	
06:06	1 MASSENGILL J assist (1)			



Clemson at Florida State

01/05/23 Donald L. Tucker Center, Tallahassee
2022-23 Women's Basketball

Game Time: 6:00 PM
Game Duration: 1:52
Attendance: 2,009

Officials: Dee Kantner, John Capolino, Krystle Apellaniz

Game Time	FSU	Score	Diff	CU
05:51		10-4	6	22 WHITEHORN R 2pt FG in the paint, layup made (2)
05:51				12 HANK H assist (1)
05:40	32 MYERS V 2pt FG in the paint, layup made (2)	12-4	8	
05:40	00 LATSON T assist (2)			
05:32	00 LATSON T substitution out			
05:32	23 HOWARD E substitution out			
05:32	5 VALENZUELA M substitution in			
05:32	11 O'BRIEN T substitution in			
05:32				2 BRADFORD D substitution out
05:32				12 HANK H substitution out
05:32				0 PERPIGNAN B substitution in
05:32				21 INYANG E substitution in
05:14				21 INYANG E 2pt FG in the paint, layup missed
05:12	32 MYERS V defensive rebound (2)			
05:04	32 MYERS V foul drawn (1)			21 INYANG E foul shooting (1 - 2)
05:04				5 ROBINSON A substitution out
05:04				3 ELMORE M substitution in
05:04	32 MYERS V free throw 1 - 2 made (3)	13-4	9	
05:04	32 MYERS V free throw 2 - 2 made (4)	14-4	10	
04:49				24 DOUGLAS A 2pt FG in the paint, driving layup missed
04:47				offensive rebound (6)
04:47	Timeout media			
04:47	3 GORDON O substitution out			
04:47	4 BEJEDI S substitution in			
04:46		14-6	8	21 INYANG E 2pt FG second chance in the paint, layup made (2)
04:46				0 PERPIGNAN B assist (1)
04:34	11 O'BRIEN T turnover bad pass (1)			21 INYANG E steal (1)
04:23				0 PERPIGNAN B turnover bad pass (1)
04:23	1 MASSENGILL J substitution out			
04:23	00 LATSON T substitution in			
04:15	00 LATSON T foul drawn (1)			22 WHITEHORN R foul shooting (1 - 3)
04:15				3 ELMORE M substitution out
04:15				22 WHITEHORN R substitution out
04:15				24 DOUGLAS A substitution out
04:15				2 BRADFORD D substitution in
04:15				5 ROBINSON A substitution in
04:15				15 GAINES K substitution in
04:15	00 LATSON T free throw fast break 1 - 2 made (1)	15-6	9	
04:15	00 LATSON T free throw fast break 2 - 2 made (2)	16-6	10	
04:05		16-8	8	21 INYANG E 2pt FG in the paint, layup made (4)
04:05				2 BRADFORD D assist (1)
03:50	11 O'BRIEN T 3pt FG , jump shot missed			
03:47				0 PERPIGNAN B defensive rebound (1)
03:41				0 PERPIGNAN B 2pt FG in the paint, layup missed
03:41	00 LATSON T defensive rebound (1)			
03:30	5 VALENZUELA M 3pt FG , jump shot missed			
03:26				0 PERPIGNAN B defensive rebound (2)
03:23				15 GAINES K 2pt FG outside the paint, jump shot missed



Clemson at Florida State

01/05/23 Donald L. Tucker Center, Tallahassee
2022-23 Women's Basketball

Game Time: 6:00 PM
Game Duration: 1:52
Attendance: 2,009

Officials: Dee Kantner, John Capolino, Krystle Apellaniz

Game Time	FSU	Score	Diff	CU
03:22				21 INYANG E offensive rebound (1)
03:22	jump ball situation			
03:22	32 MYERS V substitution out			
03:22	21 TIMPSON M substitution in			
03:20	21 TIMPSON M foul shooting (2 - 2)			21 INYANG E foul drawn (1)
03:20	21 TIMPSON M substitution out			
03:20	32 MYERS V substitution in			
03:20		16-9	7	21 INYANG E free throw 1 - 2 made (5)
03:20		16-10	6	21 INYANG E free throw 2 - 2 made (6)
03:20				21 INYANG E substitution out
03:20				12 HANK H substitution in
03:11	00 LATSON T foul drawn (2)			5 ROBINSON A foul shooting (1 - 4)
03:11	11 O'BRIEN T substitution out			
03:11	1 MASSENGILL J substitution in			
03:11	00 LATSON T free throw 1 - 2 made (3)	17-10	7	
03:11	00 LATSON T free throw 2 - 2 made (4)	18-10	8	
02:57		18-13	5	2 BRADFORD D 3pt FG , jump shot made (5)
02:57				12 HANK H assist (2)
02:46	4 BEJEDI S 2pt FG in the paint, jump shot blocked			
02:46				12 HANK H block (1)
02:43				0 PERPIGNAN B defensive rebound (3)
02:41		18-15	3	0 PERPIGNAN B 2pt FG fast break in the paint, pull up jump shot made (2)
02:30	4 BEJEDI S substitution out			
02:30	5 VALENZUELA M substitution out			
02:30	3 GORDON O substitution in			
02:30	23 HOWARD E substitution in			
02:30				15 GAINES K substitution out
02:30				22 WHITEHORN R substitution in
02:18	00 LATSON T 3pt FG , jump shot made (7)	21-15	6	
02:18	1 MASSENGILL J assist (2)			
02:07	3 GORDON O foul personal (1 - 3)			0 PERPIGNAN B foul drawn (1)
01:57				12 HANK H 2pt FG in the paint, turnaround jump shot missed
01:54	00 LATSON T defensive rebound (2)			
01:51	23 HOWARD E 3pt FG , jump shot missed			
01:48				22 WHITEHORN R defensive rebound (1)
01:31				2 BRADFORD D 3pt FG , jump shot missed
01:31	defensive dead ball rebound (1)			
01:31	32 MYERS V foul drawn (2)			0 PERPIGNAN B foul personal (2 - 5)
01:31				0 PERPIGNAN B substitution out
01:31				24 DOUGLAS A substitution in
01:31	32 MYERS V free throw 1 - 2 made (5)	22-15	7	
01:31	32 MYERS V free throw 2 - 2 made (6)	23-15	8	
01:09	jump ball situation			
01:09	3 GORDON O steal (1)			12 HANK H turnover lost ball (1)
00:54	00 LATSON T 3pt FG from turnover, jump shot made (10)	26-15	11	
00:54	1 MASSENGILL J assist (3)			
00:21				22 WHITEHORN R 2pt FG in the paint, step back jump shot missed
00:17	00 LATSON T defensive rebound (3)			



Official Basketball Play by Play - 1st Period

Clemson at Florida State

01/05/23 Donald L. Tucker Center, Tallahassee
2022-23 Women's Basketball

Game Time: 6:00 PM

Game Duration: 1:52

Attendance: 2,009

Officials: Dee Kantner, John Capolino, Krystle Apellaniz

Game Time	FSU	Score	Diff	CU
00:02	23 HOWARD E 2pt FG outside the paint, jump shot missed			
00:02	offensive dead ball rebound (2)			
END OF PERIOD				
FSU 26-15 CU				



Officials: Dee Kantner, John Capolino, Krystle Apellaniz

Clemson - 15

NO.	Name	F	Min	FG	3P	FT	Rebounds			Fouls		TP	AS	TO	ST	Blocks		+/-
				M-A	M-A	M-A	OR	DR	TOT	PF	FD					BS	BA	
5	Amari Robinson	F	09:11	0-2	0-1	0-0	0	1	1	1	0	0	0	0	0	0	0	-11
12	Hannah Hank	C	07:48	0-2	0-1	0-0	1	0	1	0	1	0	2	1	0	1	0	-13
0	Brie Perpignan	G	07:20	1-3	0-1	0-0	0	3	3	2	1	2	1	1	0	0	0	0
2	Daisha Bradford	G	08:43	2-6	1-3	0-0	2	1	3	0	0	5	1	0	1	0	2	-11
22	Ruby Whitehorn	G	08:15	1-3	0-0	0-0	0	1	1	1	0	2	0	0	0	0	0	-16
24	Ale'Jah Douglas		03:57	0-1	0-0	0-0	0	0	0	0	0	0	0	0	0	0	0	-11
21	Eno Inyang		02:12	2-3	0-0	2-2	1	0	1	1	1	6	0	0	1	0	0	2
3	MaKayla Elmore		00:49	0-0	0-0	0-0	0	0	0	0	0	0	0	0	0	0	0	0
15	Kionna Gaines		01:45	0-1	0-0	0-0	0	0	0	0	0	0	0	0	0	0	0	5
Team							1	0	1			0						
Totals				6-21	1-6	2-2	5	6	11	5	3	15	4	2	2	1	2	-11

Shooting By Period		
1st FG%	6-21	28.6%
3PT%	1-6	16.7%
FT%	2-2	100%
GM FG%	6-21	28.6%
3PT%	1-6	16.7%
FT%	2-2	100.0%

Dead Ball Rebounds: 0, 0

Technical Fouls::NONE

Florida State - 26

NO.	Name	F	Min	FG	3P	FT	Rebounds			Fouls		TP	AS	TO	ST	Blocks		+/-
				M-A	M-A	M-A	OR	DR	TOT	PF	FD					BS	BA	
21	Makayla Timpson	F	03:21	0-1	0-0	0-0	0	0	0	2	0	0	0	0	0	1	0	2
23	Erin Howard	F	06:58	2-4	1-2	0-0	1	0	1	0	0	5	1	0	0	0	0	16
00	Ta'Niya Latson	G	08:51	2-4	2-3	4-4	0	3	3	0	2	10	2	0	0	0	0	11
1	Jazmine Massengill	G	08:48	2-2	1-1	0-0	0	1	1	0	0	5	3	0	0	1	0	13
4	Sara Bejedi	G	04:26	0-1	0-0	0-0	0	1	1	0	1	0	0	1	0	0	1	-9
3	O'Mariah Gordon		05:34	0-0	0-0	0-0	0	1	1	1	0	0	0	0	1	0	0	20
32	Valencia Myers		06:39	1-1	0-0	4-4	0	2	2	0	2	6	0	0	0	0	0	9
5	Mariana Valenzuela		03:02	0-1	0-1	0-0	0	0	0	0	0	0	0	0	0	0	0	-5
11	Taylor O'Brien		02:21	0-1	0-1	0-0	0	0	0	0	0	0	0	1	0	0	0	-2
Team							0	1	1			0						
Totals				7-15	4-8	8-8	1	9	10	3	5	26	6	2	1	2	1	11

Shooting By Period		
1st FG%	7-15	46.7%
3PT%	4-8	50.0%
FT%	8-8	100%
GM FG%	7-15	46.7%
3PT%	4-8	50.0%
FT%	8-8	100.0%

Dead Ball Rebounds: 1, 1

Technical Fouls::NONE

	CU	FSU
Biggest lead	2 (1st 9:29)	11 (1st 0:54)
Best Scoring Run	5 (1st 2:41)	10 (1st 6:06)
Lead Changes	1	
Times Tied	1	
Time with Lead	01:48	06:55

Points from	CU	FSU
Turnovers	0	5
Paint	10	4
Second Chance	6	0
Fast Breaks	2	5
Bench	6	6

	Period by Period Scoring				
	1st	2nd	3rd	4th	TOT
CU	15	11	24	12	62
FSU	26	18	23	26	93



Clemson at Florida State

01/05/23 Donald L. Tucker Center, Tallahassee
2022-23 Women's Basketball

Game Time: 6:00 PM

Game Duration: 1:52

Attendance: 2,009

Officials: Dee Kantner, John Capolino, Krystle Apellaniz

Period 2

Quarter Starters:

FSU	1 Massengill J	3 Gordon O	11 O'Brien T	23 Howard E	32 Myers V
CU	2 Bradford D	5 Robinson A	21 Inyang E	22 Whitehorn R	24 Douglas A

Game Time	FSU	Score	Diff	CU
10:00	00 LATSON T substitution out			
10:00	11 O'BRIEN T substitution in			
10:00				12 HANK H substitution out
10:00				21 INYANG E substitution in
09:47				22 WHITEHORN R 2pt FG in the paint, jump shot blocked
09:47	32 MYERS V block (1)			
09:43	1 MASSENGILL J defensive rebound (2)			
09:41	1 MASSENGILL J foul drawn (1)			21 INYANG E foul shooting (2 - 1)
09:41	1 MASSENGILL J free throw fast break 1 - 2 made (6)	27-15	12	
09:41	1 MASSENGILL J free throw fast break 2 - 2 missed			
09:40				2 BRADFORD D defensive rebound (4)
09:19				5 ROBINSON A 2pt FG outside the paint, pull up jump shot missed
09:13				5 ROBINSON A offensive rebound (2)
09:13				5 ROBINSON A 2pt FG second chance in the paint, layup missed
09:12	23 HOWARD E defensive rebound (2)			
09:06	3 GORDON O 2pt FG in the paint, layup missed			
09:05				21 INYANG E defensive rebound (2)
09:04	11 O'BRIEN T steal (1)			24 DOUGLAS A turnover lost ball (1)
08:57	3 GORDON O 3pt FG fast break from turnover, jump shot made (3)	30-15	15	
08:57	1 MASSENGILL J assist (4)			
08:57				Timeout 30 Sec
08:57	Timeout media			
08:57				21 INYANG E substitution out
08:57				22 WHITEHORN R substitution out
08:57				24 DOUGLAS A substitution out
08:57				3 ELMORE M substitution in
08:57				15 GAINES K substitution in
08:57				30 OTT M substitution in
08:33				5 ROBINSON A 2pt FG in the paint, layup blocked
08:33	32 MYERS V block (2)			
08:30	23 HOWARD E defensive rebound (3)			
08:24	32 MYERS V 2pt FG in the paint, layup made (8)	32-15	17	
08:24	3 GORDON O assist (1)			
08:15				2 BRADFORD D 2pt FG outside the paint, jump shot missed
08:12				5 ROBINSON A offensive rebound (3)
08:05	jump ball situation			
08:05	11 O'BRIEN T steal (2)			15 GAINES K turnover lost ball (1)
07:55	23 HOWARD E 2pt FG from turnover outside the paint, jump shot missed			
07:54				3 ELMORE M defensive rebound (1)
07:38				2 BRADFORD D 2pt FG in the paint, driving layup missed



Clemson at Florida State

01/05/23 Donald L. Tucker Center, Tallahassee
2022-23 Women's Basketball

Game Time: 6:00 PM
Game Duration: 1:52
Attendance: 2,009

Officials: Dee Kantner, John Capolino, Krystle Apellaniz

Game Time	FSU	Score	Diff	CU
07:35	3 GORDON O defensive rebound (2)			
07:30	23 HOWARD E 3pt FG , jump shot missed			
07:26				3 ELMORE M defensive rebound (2)
07:17				5 ROBINSON A 2pt FG outside the paint, jump shot missed
07:15	1 MASSENGILL J defensive rebound (3)			
07:04	11 O'BRIEN T 3pt FG , jump shot missed			
07:03	32 MYERS V offensive rebound (3)			
07:01	32 MYERS V 2pt FG second chance in the paint, layup missed			
06:58				2 BRADFORD D defensive rebound (5)
06:37	3 GORDON O substitution out			
06:37	23 HOWARD E substitution out			
06:37	00 LATSON T substitution in			
06:37	5 VALENZUELA M substitution in			
06:37				2 BRADFORD D substitution out
06:37				3 ELMORE M substitution out
06:37				5 ROBINSON A substitution out
06:37				15 GAINES K substitution out
06:37				30 OTT M substitution out
06:37				0 PERPIGNAN B substitution in
06:37				12 HANK H substitution in
06:37				21 INYANG E substitution in
06:37				22 WHITEHORN R substitution in
06:37				24 DOUGLAS A substitution in
06:30		32-18	14	0 PERPIGNAN B 3pt FG , jump shot made (5)
06:30				24 DOUGLAS A assist (1)
06:12	5 VALENZUELA M 3pt FG , jump shot made (3)	35-18	17	
06:12	1 MASSENGILL J assist (5)			
06:05				24 DOUGLAS A 3pt FG , jump shot missed
06:01				21 INYANG E offensive rebound (3)
06:01				21 INYANG E 2pt FG second chance in the paint, layup missed
06:01				21 INYANG E offensive rebound (4)
06:01		35-20	15	21 INYANG E 2pt FG second chance in the paint, layup made (8)
06:01	5 VALENZUELA M foul shooting (1 - 1)			21 INYANG E foul drawn (2)
06:01	11 O'BRIEN T substitution out			
06:01	32 MYERS V substitution out			
06:01	2 TURNAGE B substitution in			
06:01	21 TIMPSON M substitution in			
06:01				21 INYANG E free throw 1 - 1 missed
05:59				21 INYANG E offensive rebound (5)
05:39	21 TIMPSON M steal (1)			24 DOUGLAS A turnover lost ball (2)
05:29	1 MASSENGILL J 2pt FG from turnover in the paint, pull up jump shot made (8)	37-20	17	
05:16				0 PERPIGNAN B 2pt FG in the paint, jump shot blocked
05:16	2 TURNAGE B block (1)			
05:13	5 VALENZUELA M defensive rebound (1)			
05:05	5 VALENZUELA M turnover lost ball (1)			
04:57				12 HANK H 3pt FG from turnover, jump shot missed
04:54	5 VALENZUELA M defensive rebound (2)			
04:43	2 TURNAGE B 3pt FG , jump shot missed			



Clemson at Florida State

01/05/23 Donald L. Tucker Center, Tallahassee
2022-23 Women's Basketball

Game Time: 6:00 PM
Game Duration: 1:52
Attendance: 2,009

Officials: Dee Kantner, John Capolino, Krystle Apellaniz

Game Time	FSU	Score	Diff	CU
04:41	00 LATSON T offensive rebound (4)			
04:29	5 VALENZUELA M 2pt FG second chance outside the paint, jump shot made (5)	39-20	19	
04:29	00 LATSON T assist (3)			
04:05				21 INYANG E turnover travel (1)
04:05	1 MASSENGILL J substitution out			
04:05	4 BEJEDI S substitution in			
04:05				0 PERPIGNAN B substitution out
04:05				21 INYANG E substitution out
04:05				2 BRADFORD D substitution in
04:05				5 ROBINSON A substitution in
03:52	00 LATSON T 3pt FG from turnover, jump shot missed			
03:49				5 ROBINSON A defensive rebound (4)
03:41				5 ROBINSON A 2pt FG in the paint, driving layup missed
03:38	2 TURNAGE B defensive rebound (1)			
03:32	4 BEJEDI S foul offensive (1 - 2)			12 HANK H foul drawn (2)
03:32	4 BEJEDI S turnover offensive (2)			
03:15		39-22	17	22 WHITEHORN R 2pt FG from turnover in the paint, jump shot made (4)
03:15				2 BRADFORD D assist (2)
02:59	4 BEJEDI S 3pt FG , jump shot missed			
02:56	21 TIMPSON M offensive rebound (1)			
02:56	21 TIMPSON M 2pt FG second chance in the paint, layup missed			
02:56	offensive rebound (22)			
02:51	00 LATSON T 2pt FG second chance in the paint, turnaround jump shot missed			
02:49	00 LATSON T offensive rebound (5)			
02:44	5 VALENZUELA M 3pt FG second chance, jump shot missed			
02:42				5 ROBINSON A defensive rebound (5)
02:29				22 WHITEHORN R 2pt FG in the paint, pull up jump shot missed
02:26	2 TURNAGE B defensive rebound (2)			
02:21	00 LATSON T turnover bad pass (1)			2 BRADFORD D steal (2)
02:14		39-24	15	2 BRADFORD D 2pt FG fast break from turnover in the paint, driving layup made (7)
02:11	Timeout 30 Sec			
02:11	2 TURNAGE B substitution out			
02:11	1 MASSENGILL J substitution in			
02:04	21 TIMPSON M 2pt FG in the paint, layup made (2)	41-24	17	
02:04	4 BEJEDI S assist (1)			
01:51				2 BRADFORD D turnover lost ball (1)
01:49	1 MASSENGILL J turnover bad pass (1)			12 HANK H steal (1)
01:34				22 WHITEHORN R 2pt FG from turnover in the paint, driving layup missed
01:31				22 WHITEHORN R offensive rebound (2)
01:31		41-26	15	22 WHITEHORN R 2pt FG from turnover second chance in the paint, layup made (6)
01:22	4 BEJEDI S 2pt FG in the paint, jump shot blocked			
01:22				5 ROBINSON A block (1)
01:21	21 TIMPSON M offensive rebound (2)			
01:21	21 TIMPSON M 2pt FG second chance in the paint, layup made (4)	43-26	17	



Official Basketball Play by Play - 2nd Period

Clemson at Florida State

01/05/23 Donald L. Tucker Center, Tallahassee
2022-23 Women's Basketball

Game Time: 6:00 PM

Game Duration: 1:52

Attendance: 2,009

Officials: Dee Kantner, John Capolino, Krystle Apellaniz

Game Time	FSU	Score	Diff	CU
01:21	21 TIMPSON M foul drawn (1)			5 ROBINSON A foul shooting (2 - 2)
01:21	21 TIMPSON M free throw 1 - 1 made (5)	44-26	18	
01:21	21 TIMPSON M substitution out			
01:21	32 MYERS V substitution in			
01:21				5 ROBINSON A substitution out
01:21				21 INYANG E substitution in
00:51				21 INYANG E 2pt FG in the paint, layup missed
00:51	defensive dead ball rebound (3)			
00:38	4 BEJEDI S 3pt FG , jump shot missed			
00:34				2 BRADFORD D defensive rebound (6)
00:22	4 BEJEDI S foul personal (2 - 3)			2 BRADFORD D foul drawn (1)
00:22	4 BEJEDI S substitution out			
00:22	11 O'BRIEN T substitution in			
00:22				12 HANK H substitution out
00:22				3 ELMORE M substitution in
00:06				21 INYANG E 2pt FG outside the paint, jump shot missed
00:00				21 INYANG E offensive rebound (6)
END OF PERIOD				
FSU 44-26 CU				



Officials: Dee Kantner, John Capolino, Krystle Apellaniz

Clemson - 11

NO.	Name	F/C	Min	FG			Rebounds			Fouls		TP	AS	TO	ST	Blocks		+/-
				M-A	M-A	M-A	OR	DR	TOT	PF	FD					BS	BA	
5	Amari Robinson	F	06:07	0-5	0-0	0-0	2	2	4	1	0	0	0	0	0	1	1	-5
12	Hannah Hank	C	06:14	0-1	0-1	0-0	0	0	0	0	1	0	0	0	1	0	0	-1
0	Brie Perpignan	G	02:32	1-2	1-1	0-0	0	0	0	0	0	3	0	0	0	0	1	-2
2	Daisha Bradford	G	07:28	1-3	0-0	0-0	0	3	3	0	1	2	1	1	1	0	0	-5
22	Ruby Whitehorn	G	07:40	2-5	0-0	0-0	1	0	1	0	0	4	0	0	0	0	1	-5
21	Eno Inyang		04:56	1-4	0-0	0-1	4	1	5	1	1	2	0	1	0	0	0	-6
3	MaKayla Elmore		02:43	0-0	0-0	0-0	0	2	2	0	0	0	0	0	0	0	0	-2
15	Kionna Gaines		02:20	0-0	0-0	0-0	0	0	0	0	0	0	0	1	0	0	0	-2
30	Madi Ott		02:20	0-0	0-0	0-0	0	0	0	0	0	0	0	0	0	0	0	-2
24	Ale'Jah Douglas		07:40	0-1	0-1	0-0	0	0	0	0	0	0	1	2	0	0	0	-5
Team							0	0	0			0						
Totals				5-21	1-3	0-1	7	8	15	2	3	11	2	5	2	1	3	-7

Shooting By Period		
2 nd FG%	5-21	23.8%
3PT%	1-3	33.3%
FT%	0-1	0%
GM FG%	5-21	23.8%
3PT%	1-3	33.3%
FT%	0-1	0.0%

Dead Ball Rebounds: 0, 0

Technical Fouls::NONE

Florida State - 18

NO.	Name	F/C	Min	FG			Rebounds			Fouls		TP	AS	TO	ST	Blocks		+/-
				M-A	M-A	M-A	OR	DR	TOT	PF	FD					BS	BA	
21	Makayla Timpson	F	04:40	2-3	0-0	1-1	2	0	2	0	1	5	0	0	1	0	0	3
23	Erin Howard	F	03:23	0-2	0-1	0-0	0	2	2	0	0	0	0	0	0	0	0	6
00	Ta'Niya Latson	G	06:37	0-2	0-1	0-0	2	0	2	0	0	0	1	1	0	0	0	1
1	Jazmine Massengill	G	08:06	1-1	0-0	1-2	0	2	2	0	1	3	2	1	0	0	0	11
4	Sara Bejedi	G	03:42	0-3	0-2	0-0	0	0	0	2	0	0	1	1	0	0	1	-1
3	O'Mariah Gordon		03:23	1-2	1-1	0-0	0	1	1	0	0	3	1	0	0	0	0	6
11	Taylor O'Brien		04:22	0-1	0-1	0-0	0	0	0	0	0	0	0	0	2	0	0	4
5	Mariana Valenzuela		06:37	2-3	1-2	0-0	0	2	2	1	0	5	0	1	0	0	0	1
2	Brianna Turnage		03:50	0-1	0-1	0-0	0	2	2	0	0	0	0	0	0	1	0	0
32	Valencia Myers		05:20	1-2	0-0	0-0	1	0	1	0	0	2	0	0	0	2	0	4
Team							1	0	1			0						
Totals				7-20	2-9	2-3	6	9	15	3	2	18	5	4	3	3	1	7

Shooting By Period		
2 nd FG%	7-20	35.0%
3PT%	2-9	22.2%
FT%	2-3	66.7%
GM FG%	7-20	35.0%
3PT%	2-9	22.2%
FT%	2-3	66.7%

Dead Ball Rebounds: 0, 1

Technical Fouls::NONE

	CU	FSU
Biggest lead	0 (1 st 10:00)	19 (2 nd 4:29)
Best Scoring Run	4(2 nd 2:14)	6(2 nd 8:24)
Lead Changes	0	
Times Tied	0	
Time with Lead	00:00	09:47

Points from	CU	FSU
Turnovers	6	5
Paint	8	8
Second Chance	4	5
Fast Breaks	2	4
Bench	2	10

Period by Period Scoring					
	1st	2nd	3rd	4th	TOT
CU	15	11	24	12	62
FSU	26	18	23	26	93



Officials: Dee Kantner, John Capolino, Krystle Apellaniz

Clemson - 26

NO.	Name	F/C	Min	FG			Rebounds			Fouls		TP	AS	TO	ST	Blocks		+/-
				M-A	M-A	M-A	OR	DR	TOT	PF	FD					BS	BA	
5	Amari Robinson	F	15:18	0-7	0-1	0-0	2	3	5	2	0	0	0	0	0	1	1	-16
12	Hannah Hank	C	14:02	0-3	0-2	0-0	1	0	1	0	2	0	2	1	1	1	0	-14
0	Brie Perpignan	G	09:52	2-5	1-2	0-0	0	3	3	2	1	5	1	1	0	0	1	-2
2	Daisha Bradford	G	16:11	3-9	1-3	0-0	2	4	6	0	1	7	2	1	2	0	2	-16
22	Ruby Whitehorn	G	15:55	3-8	0-0	0-0	1	1	2	1	0	6	0	0	0	0	1	-21
24	Ale'Jah Douglas		11:37	0-2	0-1	0-0	0	0	0	0	0	0	1	2	0	0	0	-16
21	Eno Inyang		07:08	3-7	0-0	2-3	5	1	6	2	2	8	0	1	1	0	0	-4
3	MaKayla Elmore		03:32	0-0	0-0	0-0	0	2	2	0	0	0	0	0	0	0	0	-2
15	Kionna Gaines		04:05	0-1	0-0	0-0	0	0	0	0	0	0	0	1	0	0	0	3
30	Madi Ott		02:20	0-0	0-0	0-0	0	0	0	0	0	0	0	0	0	0	0	-2
Team							1	0	1			0		0				
Totals				11-42	2-9	2-3	12	14	26	7	6	26	6	7	4	2	5	-18

Shooting By Period		
1 st FG%	6-21	28.6%
3PT%	1-6	16.7%
FT%	2-2	100%
2 nd FG%	5-21	23.8%
3PT%	1-3	33.3%
FT%	0-1	0%
GM FG%	11-42	26.2%
3PT%	2-9	22.2%
FT%	2-3	66.7%

Dead Ball Rebounds: 0, 0

Technical Fouls::NONE

Florida State - 44

NO.	Name	F/C	Min	FG			Rebounds			Fouls		TP	AS	TO	ST	Blocks		+/-
				M-A	M-A	M-A	OR	DR	TOT	PF	FD					BS	BA	
21	Makayla Timpson	F	08:01	2-4	0-0	1-1	2	0	2	2	1	5	0	0	1	1	0	5
23	Erin Howard	F	10:21	2-6	1-3	0-0	1	2	3	0	0	5	1	0	0	0	0	22
00	Ta'Niya Latson	G	15:28	2-6	2-4	4-4	2	3	5	0	2	10	3	1	0	0	0	12
1	Jazmine Massengill	G	16:54	3-3	1-1	1-2	0	3	3	0	1	8	5	1	0	1	0	24
4	Sara Bejedi	G	08:08	0-4	0-2	0-0	0	1	1	2	1	0	1	2	0	0	2	-10
3	O'Mariah Gordon		08:57	1-2	1-1	0-0	0	2	2	1	0	3	1	0	1	0	0	26
32	Valencia Myers		11:59	2-3	0-0	4-4	1	2	3	0	2	8	0	0	0	2	0	13
5	Mariana Valenzuela		09:39	2-4	1-3	0-0	0	2	2	1	0	5	0	1	0	0	0	-4
11	Taylor O'Brien		06:43	0-2	0-2	0-0	0	0	0	0	0	0	0	1	2	0	0	2
2	Brianna Turnage		03:50	0-1	0-1	0-0	0	2	2	0	0	0	0	0	0	1	0	0
Team							1	1	2			0		0				
Totals				14-35	6-17	10-11	7	18	25	6	7	44	11	6	4	5	2	18

Shooting By Period		
1 st FG%	7-15	46.7%
3PT%	4-8	50.0%
FT%	8-8	100%
2 nd FG%	7-20	35.0%
3PT%	2-9	22.2%
FT%	2-3	66.7%
GM FG%	14-35	40.0%
3PT%	6-17	35.3%
FT%	10-11	90.9%

Dead Ball Rebounds: 1, 2

Technical Fouls::NONE

	CU	FSU
Biggest lead	2 (1 st 9:29)	19 (2 nd 4:29)
Best Scoring Run	5 (1 st 2:41)	14 (2 nd 8:24)
Lead Changes	1	
Times Tied	1	
Time with Lead	01:48	16:55

Points from	CU	FSU
Turnovers	6	10
Paint	18	12
Second Chance	10	5
Fast Breaks	4	9
Bench	8	16

Period by Period Scoring					
	1st	2nd	3rd	4th	TOT
CU	15	11	24	12	62
FSU	26	18	23	26	93

**Period 3****Quarter Starters:**

FSU	00 Latson T	1 Massengill J	4 Bejedi S	21 Timpson M	23 Howard E
CU	0 Perpignan B	2 Bradford D	5 Robinson A	12 Hank H	22 Whitehorn R

Game Time	FSU	Score	Diff	CU
10:00	5 VALENZUELA M substitution out			
10:00	11 O'BRIEN T substitution out			
10:00	32 MYERS V substitution out			
10:00	4 BEJEDI S substitution in			
10:00	21 TIMPSON M substitution in			
10:00	23 HOWARD E substitution in			
10:00				3 ELMORE M substitution out
10:00				21 INYANG E substitution out
10:00				24 DOUGLAS A substitution out
10:00				0 PERPIGNAN B substitution in
10:00				5 ROBINSON A substitution in
10:00				12 HANK H substitution in
09:47				22 WHITEHORN R turnover travel (1)
09:19	21 TIMPSON M 2pt FG from turnover in the paint, jump shot blocked			
09:19				12 HANK H block (2)
09:16				5 ROBINSON A defensive rebound (6)
09:09				5 ROBINSON A 2pt FG in the paint, layup missed
09:05				5 ROBINSON A offensive rebound (7)
09:05		44-28	16	5 ROBINSON A 2pt FG second chance in the paint, layup made (2)
08:52	21 TIMPSON M turnover lost ball (1)			
08:42		44-30	14	22 WHITEHORN R 2pt FG from turnover outside the paint, jump shot made (8)
08:42				0 PERPIGNAN B assist (2)
08:23	23 HOWARD E 3pt FG , jump shot missed			
08:19				12 HANK H defensive rebound (2)
08:01				22 WHITEHORN R 2pt FG outside the paint, pull up jump shot missed
07:59	21 TIMPSON M defensive rebound (3)			
07:51	00 LATSON T 2pt FG in the paint, jump shot made (12)	46-30	16	
07:25				0 PERPIGNAN B 2pt FG in the paint, layup missed
07:22	21 TIMPSON M defensive rebound (4)			
07:19	4 BEJEDI S foul drawn (2)			12 HANK H foul personal (1 - 1)
07:19	21 TIMPSON M substitution out			
07:19	32 MYERS V substitution in			
07:14	1 MASSENGILL J 2pt FG in the paint, turnaround jump shot made (10)	48-30	18	
07:14	23 HOWARD E assist (2)			
06:54		48-33	15	2 BRADFORD D 3pt FG , jump shot made (10)
06:54				22 WHITEHORN R assist (1)
06:42	23 HOWARD E turnover bad pass (1)			5 ROBINSON A steal (1)
06:40				2 BRADFORD D turnover travel (2)
06:35	23 HOWARD E 2pt FG from turnover outside the paint, jump shot made (7)	50-33	17	



Clemson at Florida State

01/05/23 Donald L. Tucker Center, Tallahassee
2022-23 Women's Basketball

Game Time: 6:00 PM
Game Duration: 1:52
Attendance: 2,009

Officials: Dee Kantner, John Capolino, Krystle Apellaniz

Game Time	FSU	Score	Diff	CU
06:35	1 MASSENGILL J assist (6)			
06:19		50-35	15	22 WHITEHORN R 2pt FG outside the paint, jump shot made (10)
06:06	32 MYERS V 2pt FG in the paint, layup made (10)	52-35	17	
06:06	1 MASSENGILL J assist (7)			
05:47				0 PERPIGNAN B substitution out
05:47				24 DOUGLAS A substitution in
05:47				12 HANK H substitution out
05:47				21 INYANG E substitution in
05:35				22 WHITEHORN R 2pt FG outside the paint, jump shot missed
05:32	00 LATSON T defensive rebound (6)			
05:31	00 LATSON T foul drawn (3)			2 BRADFORD D foul shooting (1 - 2)
05:31				22 WHITEHORN R substitution out
05:31				15 GAINES K substitution in
05:31	00 LATSON T free throw fast break 1 - 2 made (13)	53-35	18	
05:31	00 LATSON T free throw fast break 2 - 2 made (14)	54-35	19	
05:31	00 LATSON T substitution out			
05:31	3 GORDON O substitution in			
05:12		54-38	16	5 ROBINSON A 3pt FG , jump shot made (5)
05:12				2 BRADFORD D assist (3)
04:56	3 GORDON O 3pt FG , jump shot missed			
04:54				21 INYANG E defensive rebound (7)
04:43		54-41	13	2 BRADFORD D 3pt FG , jump shot made (13)
04:43				15 GAINES K assist (1)
04:32	32 MYERS V 2pt FG in the paint, layup made (12)	56-41	15	
04:32	1 MASSENGILL J assist (8)			
04:00		56-44	12	5 ROBINSON A 3pt FG , jump shot made (8)
04:00				2 BRADFORD D assist (4)
03:59	Timeout 30 Sec			
03:59	Timeout media			
03:59	4 BEJEDI S substitution out			
03:59	23 HOWARD E substitution out			
03:59	32 MYERS V substitution out			
03:59	00 LATSON T substitution in			
03:59	5 VALENZUELA M substitution in			
03:59	21 TIMPSON M substitution in			
03:45	00 LATSON T 2pt FG in the paint, layup missed			
03:45	3 GORDON O offensive rebound (3)			
03:45	jump ball situation			
03:44	Timeout media			
03:44				15 GAINES K substitution out
03:44				22 WHITEHORN R substitution in
03:42	00 LATSON T 3pt FG second chance, jump shot missed			
03:40				22 WHITEHORN R defensive rebound (3)
03:21				24 DOUGLAS A 3pt FG , jump shot missed
03:17				21 INYANG E offensive rebound (8)
03:15				24 DOUGLAS A 3pt FG second chance, jump shot missed
03:12				22 WHITEHORN R offensive rebound (4)
03:12	00 LATSON T foul shooting (1 - 1)			22 WHITEHORN R foul drawn (1)



Clemson at Florida State

01/05/23 Donald L. Tucker Center, Tallahassee
2022-23 Women's Basketball

Game Time: 6:00 PM
Game Duration: 1:52
Attendance: 2,009

Officials: Dee Kantner, John Capolino, Krystle Apellaniz

Game Time	FSU	Score	Diff	CU
03:12				24 DOUGLAS A substitution out
03:12				0 PERPIGNAN B substitution in
03:12				22 WHITEHORN R free throw 1 - 2 missed
03:12				offensive dead ball rebound (1)
03:12		56-45	11	22 WHITEHORN R free throw 2 - 2 made (11)
02:59	00 LATSON T 2pt FG in the paint, floating jump shot made (16)	58-45	13	
02:59	00 LATSON T foul drawn (4)			21 INYANG E foul shooting (3 - 3)
02:59	00 LATSON T free throw 1 - 1 made (17)	59-45	14	
02:59				21 INYANG E substitution out
02:59				3 ELMORE M substitution in
02:46		59-47	12	5 ROBINSON A 2pt FG in the paint, layup made (10)
02:46				2 BRADFORD D assist (5)
02:32	00 LATSON T foul drawn (5)			3 ELMORE M foul shooting (1 - 4)
02:32	00 LATSON T free throw 1 - 2 made (18)	60-47	13	
02:32	00 LATSON T free throw 2 - 2 made (19)	61-47	14	
02:14				2 BRADFORD D 3pt FG , jump shot missed
02:12	21 TIMPSON M defensive rebound (5)			
02:00	3 GORDON O 2pt FG in the paint, driving layup missed			
01:58				5 ROBINSON A defensive rebound (8)
01:50		61-50	11	5 ROBINSON A 3pt FG , jump shot made (13)
01:50				2 BRADFORD D assist (6)
01:32	00 LATSON T 2pt FG in the paint, floating jump shot made (21)	63-50	13	
01:32	1 MASSENGILL J assist (9)			
01:14				3 ELMORE M 3pt FG , jump shot missed
01:12	00 LATSON T defensive rebound (7)			
01:08	00 LATSON T foul drawn (6)			2 BRADFORD D foul shooting (2 - 5)
01:08	3 GORDON O substitution out			
01:08	21 TIMPSON M substitution out			
01:08	4 BEJEDI S substitution in			
01:08	32 MYERS V substitution in			
01:08				2 BRADFORD D substitution out
01:08				3 ELMORE M substitution out
01:08				12 HANK H substitution in
01:08				24 DOUGLAS A substitution in
01:08	00 LATSON T free throw fast break 1 - 2 made (22)	64-50	14	
01:08	00 LATSON T free throw fast break 2 - 2 made (23)	65-50	15	
00:57				5 ROBINSON A turnover travel (1)
00:45	5 VALENZUELA M 2pt FG from turnover outside the paint, jump shot missed			
00:40	00 LATSON T offensive rebound (8)			
00:40	00 LATSON T 2pt FG from turnover second chance in the paint, layup made (25)	67-50	17	
00:18				24 DOUGLAS A 3pt FG , jump shot missed
00:16	4 BEJEDI S defensive rebound (2)			
00:01	00 LATSON T 3pt FG , jump shot missed			
00:01	offensive dead ball rebound (4)			
END OF PERIOD				
FSU 67-50 CU				



Officials: Dee Kantner, John Capolino, Krystle Apellaniz

Clemson - 24

NO.	Name	F	Min	FG	3P	FT	Rebounds			Fouls		TP	AS	TO	ST	Blocks		+/-
				M-A	M-A	M-A	OR	DR	TOT	PF	FD					BS	BA	
5	Amari Robinson	F	10:00	5-6	3-3	0-0	1	2	3	0	0	13	0	1	1	0	0	1
12	Hannah Hank	C	05:21	0-0	0-0	0-0	0	1	1	1	0	0	0	0	0	1	0	-3
0	Brie Perpignan	G	07:25	0-1	0-0	0-0	0	0	0	0	0	0	1	0	0	0	0	-4
2	Daisha Bradford	G	08:52	2-3	2-3	0-0	0	0	0	2	0	6	4	1	0	0	0	5
22	Ruby Whitehorn	G	08:13	2-4	0-0	1-2	1	1	2	0	1	5	1	1	0	0	0	-4
21	Eno Inyang		02:48	0-0	0-0	0-0	1	1	2	1	0	0	0	0	0	0	0	3
24	Ale'Jah Douglas		03:43	0-3	0-3	0-0	0	0	0	0	0	0	0	0	0	0	0	1
15	Kionna Gaines		01:47	0-0	0-0	0-0	0	0	0	0	0	0	1	0	0	0	0	5
3	MaKayla Elmore		01:51	0-1	0-1	0-0	0	0	0	1	0	0	0	0	0	0	0	1
Team							0	0	0			0						
Totals				9-18	5-10	1-2	3	5	8	5	1	24	7	3	1	1	0	1

Shooting By Period		
3rd FG%	9-18	50.0%
3PT%	5-10	50.0%
FT%	1-2	50%
GM FG%	9-18	50.0%
3PT%	5-10	50.0%
FT%	1-2	50.0%

Dead Ball Rebounds: 1, 0

Technical Fouls::NONE

Florida State - 23

NO.	Name	F	Min	FG	3P	FT	Rebounds			Fouls		TP	AS	TO	ST	Blocks		+/-
				M-A	M-A	M-A	OR	DR	TOT	PF	FD					BS	BA	
21	Makayla Timpson	F	05:32	0-1	0-0	0-0	0	3	3	0	0	0	0	1	0	0	1	-1
23	Erin Howard	F	06:01	1-2	0-1	0-0	0	0	0	0	0	2	1	1	0	0	0	-6
00	Ta'Niya Latson	G	08:28	4-7	0-2	7-7	1	2	3	1	4	15	0	0	0	0	0	6
1	Jazmine Massengill	G	10:00	1-1	0-0	0-0	0	0	0	0	0	2	4	0	0	0	0	-1
4	Sara Bejedi	G	07:09	0-0	0-0	0-0	0	1	1	0	1	0	0	0	0	0	0	-2
11	Taylor O'Brien		00:00	0-0	0-0	0-0	0	0	0	0	0	0	0	0	0	0	0	0
32	Valencia Myers		04:28	2-2	0-0	0-0	0	0	0	0	0	4	0	0	0	0	0	0
3	O'Mariah Gordon		04:23	0-2	0-1	0-0	1	0	1	0	0	0	0	0	0	0	0	-6
5	Mariana Valenzuela		03:59	0-1	0-0	0-0	0	0	0	0	0	0	0	0	0	0	0	5
Team							0	0	0			0						
Totals				8-16	0-4	7-7	2	6	8	1	5	23	5	2	0	0	1	-1

Shooting By Period		
3rd FG%	8-16	50.0%
3PT%	0-4	0.0%
FT%	7-7	100%
GM FG%	8-16	50.0%
3PT%	0-4	0.0%
FT%	7-7	100.0%

Dead Ball Rebounds: 1, 0

Technical Fouls::NONE

	CU	FSU
Biggest lead	0 (1 st 10:00)	19 (3 rd 5:31)
Best Scoring Run	6(3 rd 4:43)	6(3 rd 0:40)
Lead Changes	0	
Times Tied	0	
Time with Lead	00:00	09:19

	CU	FSU
Points from		
Turnovers	2	4
Paint	4	14
Second Chance	3	2
Fast Breaks	0	4
Bench	0	4

Period by Period Scoring					
	1st	2nd	3rd	4th	TOT
CU	15	11	24	12	62
FSU	26	18	23	26	93



Clemson at Florida State

01/05/23 Donald L. Tucker Center, Tallahassee
2022-23 Women's Basketball

Game Time: 6:00 PM

Game Duration: 1:52

Attendance: 2,009

Officials: Dee Kantner, John Capolino, Krystle Apellaniz

Period 4

Quarter Starters:

FSU	1 Massengill J	4 Bejedi S	5 Valenzuela M	11 O'Brien T	32 Myers V
CU	0 Perpignan B	2 Bradford D	12 Hank H	21 Inyang E	22 Whitehorn R

Game Time	FSU	Score	Diff	CU
10:00	00 LATSON T substitution out			
10:00	11 O'BRIEN T substitution in			
10:00				5 ROBINSON A substitution out
10:00				24 DOUGLAS A substitution out
10:00				2 BRADFORD D substitution in
10:00				21 INYANG E substitution in
09:34				21 INYANG E 2pt FG in the paint, layup missed
09:25				12 HANK H offensive rebound (3)
09:25				2 BRADFORD D 3pt FG second chance, jump shot missed
09:21	4 BEJEDI S defensive rebound (3)			
09:21	4 BEJEDI S 2pt FG fast break in the paint, layup made (2)	69-50	19	
09:21	4 BEJEDI S foul drawn (3)			0 PERPIGNAN B foul shooting (3 - 1)
09:21	5 VALENZUELA M substitution out			
09:21	23 HOWARD E substitution in			
09:21	4 BEJEDI S free throw fast break 1 - 1 made (3)	70-50	20	
09:09		70-52	18	0 PERPIGNAN B 2pt FG in the paint, pull up jump shot made (7)
08:54	23 HOWARD E 3pt FG , jump shot made (10)	73-52	21	
08:54	4 BEJEDI S assist (2)			
08:32				0 PERPIGNAN B 3pt FG , jump shot missed
08:28				21 INYANG E offensive rebound (9)
08:28				Timeout 30 Sec
08:28				Timeout media
08:28				12 HANK H substitution out
08:28				5 ROBINSON A substitution in
08:28	1 MASSENGILL J substitution out			
08:28	00 LATSON T substitution in			
08:17		73-54	19	21 INYANG E 2pt FG second chance in the paint, layup made (10)
08:17				5 ROBINSON A assist (1)
08:02	00 LATSON T 2pt FG in the paint, pull up jump shot made (27)	75-54	21	
07:37				2 BRADFORD D 2pt FG outside the paint, jump shot missed
07:34	32 MYERS V defensive rebound (4)			
07:27	4 BEJEDI S 2pt FG in the paint, driving layup made (5)	77-54	23	
07:18	4 BEJEDI S foul personal (3 - 1)			0 PERPIGNAN B foul drawn (2)
07:18	4 BEJEDI S substitution out			
07:18	3 GORDON O substitution in			
07:18				0 PERPIGNAN B substitution out
07:18				2 BRADFORD D substitution out
07:18				24 DOUGLAS A substitution in
07:18				30 OTT M substitution in
07:08				24 DOUGLAS A 2pt FG outside the paint, pull up jump shot missed
07:06				21 INYANG E offensive rebound (10)



Clemson at Florida State

01/05/23 Donald L. Tucker Center, Tallahassee
2022-23 Women's Basketball

Game Time: 6:00 PM
Game Duration: 1:52
Attendance: 2,009

Officials: Dee Kantner, John Capolino, Krystle Apellaniz

Game Time	FSU	Score	Diff	CU
06:58		77-56	21	22 WHITEHORN R 2pt FG second chance in the paint, driving layup made (13)
06:43	3 GORDON O 2pt FG in the paint, jump shot missed			
06:40				24 DOUGLAS A defensive rebound (1)
06:37	23 HOWARD E foul shooting (1 - 2)			30 OTT M foul drawn (1)
06:37	32 MYERS V substitution out			
06:37	21 TIMPSON M substitution in			
06:37		77-57	20	30 OTT M free throw fast break 1 - 2 made (1)
06:37		77-58	19	30 OTT M free throw fast break 2 - 2 made (2)
06:37				21 INYANG E substitution out
06:37				12 HANK H substitution in
06:28	11 O'BRIEN T 3pt FG fast break, jump shot made (3)	80-58	22	
06:28	00 LATSON T assist (4)			
06:20	23 HOWARD E steal (1)			22 WHITEHORN R turnover lost ball (2)
06:16	11 O'BRIEN T foul drawn (1)			24 DOUGLAS A foul shooting (1 - 2)
06:16	00 LATSON T substitution out			
06:16	2 TURNAGE B substitution in			
06:16	11 O'BRIEN T free throw fast break 1 - 2 missed			
06:16	offensive dead ball rebound (5)			
06:16	11 O'BRIEN T free throw fast break 2 - 2 made (4)	81-58	23	
05:57				30 OTT M 3pt FG , jump shot missed
05:55	21 TIMPSON M defensive rebound (6)			
05:43	21 TIMPSON M 2pt FG in the paint, layup missed			
05:41				5 ROBINSON A defensive rebound (9)
05:32				5 ROBINSON A substitution out
05:32				22 WHITEHORN R substitution out
05:32				24 DOUGLAS A substitution out
05:32				30 OTT M substitution out
05:32				0 PERPIGNAN B substitution in
05:32				2 BRADFORD D substitution in
05:32				15 GAINES K substitution in
05:32				21 INYANG E substitution in
05:32	11 O'BRIEN T steal (3)			2 BRADFORD D turnover bad pass (3)
05:26	11 O'BRIEN T 2pt FG from turnover in the paint, driving layup missed			
05:24	11 O'BRIEN T offensive rebound (1)			
05:22	3 GORDON O 2pt FG from turnover second chance outside the paint, jump shot missed			
05:18				2 BRADFORD D defensive rebound (7)
05:12	11 O'BRIEN T foul personal (1 - 3)			2 BRADFORD D foul drawn (2)
05:05	23 HOWARD E foul personal (2 - 4)			21 INYANG E foul drawn (3)
04:58				15 GAINES K 3pt FG , jump shot missed
04:55				0 PERPIGNAN B offensive rebound (4)
04:53				0 PERPIGNAN B 2pt FG second chance outside the paint, jump shot missed
04:51	2 TURNAGE B defensive rebound (3)			
04:36	21 TIMPSON M 2pt FG in the paint, layup blocked			
04:36				21 INYANG E block (1)
04:36	21 TIMPSON M offensive rebound (7)			
04:33	21 TIMPSON M 2pt FG second chance outside the paint, jump shot blocked			



Clemson at Florida State

01/05/23 Donald L. Tucker Center, Tallahassee
2022-23 Women's Basketball

Game Time: 6:00 PM
Game Duration: 1:52
Attendance: 2,009

Officials: Dee Kantner, John Capolino, Krystle Apellaniz

Game Time	FSU	Score	Diff	CU
04:33				21 INYANG E block (2)
04:33	23 HOWARD E offensive rebound (4)			
04:33	23 HOWARD E turnover travel (2)			
04:33	21 TIMPSON M substitution out			
04:33	32 MYERS V substitution in			
04:16				15 GAINES K turnover travel (2)
04:16	3 GORDON O foul drawn (1)			0 PERPIGNAN B foul personal (4 - 3)
04:16				12 HANK H substitution out
04:16				3 ELMORE M substitution in
04:10	23 HOWARD E 3pt FG from turnover, jump shot missed			
04:07	32 MYERS V offensive rebound (5)			
03:55	11 O'BRIEN T substitution out			
03:55	23 HOWARD E substitution out			
03:55	00 LATSON T substitution in			
03:55	5 VALENZUELA M substitution in			
03:55				15 GAINES K substitution out
03:55				30 OTT M substitution in
03:49	00 LATSON T 2pt FG from turnover second chance in the paint, jump shot missed			
03:49	offensive dead ball rebound (6)			
03:49	32 MYERS V foul drawn (3)			3 ELMORE M foul personal (2 - 4)
03:49				0 PERPIGNAN B substitution out
03:49				24 DOUGLAS A substitution in
03:46	00 LATSON T foul drawn (7)			21 INYANG E foul shooting (4 - 5)
03:46	00 LATSON T free throw 1 - 2 made (28)	82-58	24	
03:46	00 LATSON T free throw 2 - 2 made (29)	83-58	25	
03:36				2 BRADFORD D 2pt FG outside the paint, jump shot missed
03:34				21 INYANG E offensive rebound (11)
03:32				21 INYANG E 2pt FG second chance in the paint, jump shot blocked
03:32	2 TURNAGE B block (2)			
03:32				2 BRADFORD D offensive rebound (8)
03:30				2 BRADFORD D 2pt FG second chance in the paint, jump shot missed
03:30	5 VALENZUELA M defensive rebound (3)			
03:16	00 LATSON T 2pt FG outside the paint, jump shot missed			
03:15	32 MYERS V offensive rebound (6)			
03:10				2 BRADFORD D substitution out
03:10				4 HIPPO W substitution in
03:08	2 TURNAGE B 3pt FG second chance, jump shot missed			
03:07				3 ELMORE M defensive rebound (3)
02:39				Timeout 30 Sec
02:39	2 TURNAGE B substitution out			
02:39	3 GORDON O substitution out			
02:39	4 BEJEDI S substitution in			
02:39	11 O'BRIEN T substitution in			
02:35				30 OTT M turnover travel (1)
02:28	00 LATSON T foul drawn (8)			21 INYANG E foul shooting (5 - 6)
02:28				21 INYANG E substitution out
02:28				15 GAINES K substitution in



Official Basketball Play by Play - 4th Period

Clemson at Florida State

01/05/23 Donald L. Tucker Center, Tallahassee
2022-23 Women's Basketball

Game Time: 6:00 PM

Game Duration: 1:52

Attendance: 2,009

Officials: Dee Kantner, John Capolino, Krystle Apellaniz

Game Time	FSU	Score	Diff	CU
02:28	00 LATSON T free throw 1 - 2 made (30)	84-58	26	
02:28	00 LATSON T free throw 2 - 2 made (31)	85-58	27	
02:02				30 OTT M 3pt FG , jump shot missed
02:00	32 MYERS V defensive rebound (7)			
01:49	4 BEJEDI S 3pt FG , jump shot missed			
01:47				24 DOUGLAS A defensive rebound (2)
01:38		85-61	24	30 OTT M 3pt FG , jump shot made (5)
01:38				15 GAINES K assist (2)
01:20	5 VALENZUELA M 3pt FG , jump shot made (8)	88-61	27	
01:20	00 LATSON T assist (5)			
00:55	32 MYERS V foul shooting (1 - 5)			15 GAINES K foul drawn (1)
00:55	00 LATSON T substitution out			
00:55	3 GORDON O substitution in			
00:54		88-62	26	15 GAINES K free throw 1 - 2 made (1)
00:53				15 GAINES K free throw 2 - 2 missed
00:53	11 O'BRIEN T defensive rebound (2)			
00:50	11 O'BRIEN T 2pt FG fast break in the paint, layup made (6)	90-62	28	
00:33	3 GORDON O steal (2)			4 HIPPO W turnover lost ball (1)
00:10	5 VALENZUELA M 3pt FG from turnover, jump shot made (11)	93-62	31	
00:10	3 GORDON O assist (2)			
END OF GAME				
FSU 93-62 CU				



Officials: Dee Kantner, John Capolino, Krystle Apellaniz

Clemson - 12

NO.	Name	F	Min	FG			Rebounds			Fouls		TP	AS	TO	ST	Blocks		+/-
				M-A	3P	FT	OR	DR	TOT	PF	FD					BS	BA	
5	Amari Robinson	F	02:56	0-0	0-0	0-0	0	1	1	0	0	0	1	0	0	0	0	-2
12	Hannah Hank	C	03:53	0-0	0-0	0-0	1	0	1	0	0	0	0	0	0	0	0	-8
0	Brie Perpignan	G	04:25	1-3	0-1	0-0	1	0	1	2	1	2	0	0	0	0	0	-6
2	Daisha Bradford	G	05:04	0-4	0-1	0-0	1	1	2	0	1	0	0	1	0	0	0	-8
22	Ruby Whitehorn	G	04:28	1-1	0-0	0-0	0	0	0	0	0	2	0	1	0	0	0	-6
21	Eno Inyang		06:27	1-3	0-0	0-0	3	0	3	2	1	2	0	0	0	2	1	-4
24	Ale'Jah Douglas		05:35	0-1	0-0	0-0	0	2	2	1	0	0	0	0	0	0	0	-8
30	Madi Ott		05:41	1-3	1-3	2-2	0	0	0	0	1	5	0	1	0	0	0	-8
15	Kionna Gaines		04:05	0-1	0-1	1-2	0	0	0	0	1	1	1	1	0	0	0	-6
3	MaKayla Elmore		04:16	0-0	0-0	0-0	0	1	1	1	0	0	0	0	0	0	0	-8
4	Weronika Hipp		03:10	0-0	0-0	0-0	0	0	0	0	0	0	0	1	0	0	0	-6
Team							0	0	0			0						
Totals				4-16	1-6	3-4	6	5	11	6	5	12	2	5	0	2	1	-14

Shooting By Period		
4 th FG%	4-16	25.0%
3PT%	1-6	16.7%
FT%	3-4	75%
GM FG%	4-16	25.0%
3PT%	1-6	16.7%
FT%	3-4	75.0%

Dead Ball Rebounds: 0, 0

Technical Fouls::NONE

Florida State - 26

NO.	Name	F	Min	FG			Rebounds			Fouls		TP	AS	TO	ST	Blocks		+/-
				M-A	3P	FT	OR	DR	TOT	PF	FD					BS	BA	
21	Makayla Timpson	F	02:04	0-3	0-0	0-0	1	1	2	0	0	0	0	0	0	0	2	2
23	Erin Howard	F	05:26	1-2	1-2	0-0	1	0	1	2	0	3	0	1	1	0	0	4
00	Ta'Niya Latson	G	05:12	1-3	0-0	4-4	0	0	0	0	2	6	2	0	0	0	0	5
1	Jazmine Massengill	G	01:32	0-0	0-0	0-0	0	0	0	0	0	0	0	0	0	0	0	4
4	Sara Bejedi	G	05:21	2-3	0-1	1-1	0	1	1	1	1	5	1	0	0	0	0	12
11	Taylor O'Brien		08:44	2-3	1-1	1-2	1	1	2	1	1	6	0	0	1	0	0	12
3	O'Mariah Gordon		05:34	0-2	0-0	0-0	0	0	0	0	1	0	1	0	1	0	0	6
2	Brianna Turnage		03:37	0-1	0-1	0-0	0	1	1	0	0	0	0	0	0	1	0	3
32	Valencia Myers		07:56	0-0	0-0	0-0	2	2	4	1	1	0	0	0	0	0	0	12
5	Mariana Valenzuela		04:34	2-2	2-2	0-0	0	1	1	0	0	6	0	0	0	0	0	10
Team							0	0	0			0						
Totals				8-19	4-7	6-7	5	7	12	5	6	26	4	1	3	1	2	14

Shooting By Period		
4 th FG%	8-19	42.1%
3PT%	4-7	57.1%
FT%	6-7	85.7%
GM FG%	8-19	42.1%
3PT%	4-7	57.1%
FT%	6-7	85.7%

Dead Ball Rebounds: 2, 0

Technical Fouls::NONE

	CU	FSU
Biggest lead	0 (1 st 10:00)	31 (4 th 0:10)
Best Scoring Run	4(4 th 6:37)	8(4 th 2:28)
Lead Changes	0	
Times Tied	0	
Time with Lead	00:00	09:34

	CU	FSU
Points from		
Turnovers	0	8
Paint	6	8
Second Chance	4	2
Fast Breaks	2	9
Bench	8	12

Period by Period Scoring					
	1st	2nd	3rd	4th	TOT
CU	15	11	24	12	62
FSU	26	18	23	26	93



Clemson at Florida State

01/05/23 Donald L. Tucker Center, Tallahassee
2022-23 Women's Basketball

Game Time: 6:00 PM
Game Duration: 1:52
Attendance: 2,009

Officials: Dee Kantner, John Capolino, Krystle Apellaniz

Clemson - 36

NO.	Name	Min	FG			Rebounds			Fouls		TP	AS	TO	ST	Blocks		+/-
			M-A	M-A	M-A	OR	DR	TOT	PF	FD					BS	BA	
5	Amari Robinson	F 12:56	5-6	3-3	0-0	1	3	4	0	0	13	1	1	1	0	0	-1
12	Hannah Hank	C 09:14	0-0	0-0	0-0	1	1	2	1	0	0	0	0	0	1	0	-11
0	Brie Perpignan	G 11:50	1-4	0-1	0-0	1	0	1	2	1	2	1	0	0	0	0	-10
2	Daisha Bradford	G 13:56	2-7	2-4	0-0	1	1	2	2	1	6	4	2	0	0	0	-3
22	Ruby Whitehorn	G 12:41	3-5	0-0	1-2	1	1	2	0	1	7	1	2	0	0	0	-10
21	Eno Inyang	09:15	1-3	0-0	0-0	4	1	5	3	1	2	0	0	0	2	1	-1
24	Ale'Jah Douglas	09:18	0-4	0-3	0-0	0	2	2	1	0	0	0	0	0	0	0	-7
15	Kionna Gaines	05:52	0-1	0-1	1-2	0	0	0	0	1	1	2	1	0	0	0	-1
3	MaKayla Elmore	06:07	0-1	0-1	0-0	0	1	1	2	0	0	0	0	0	0	0	-7
30	Madi Ott	05:41	1-3	1-3	2-2	0	0	0	0	1	5	0	1	0	0	0	-8
4	Weronika Hipp	03:10	0-0	0-0	0-0	0	0	0	0	0	0	0	1	0	0	0	-6
Team						0	0	0			0		0				
Totals			13-34	6-16	4-6	9	10	19	11	6	36	9	8	1	3	1	-13

Shooting By Period		
3 rd FG%	9-18	50.0%
3PT%	5-10	50.0%
FT%	1-2	50%
4 th FG%	4-16	25.0%
3PT%	1-6	16.7%
FT%	3-4	75%
GM FG%	13-34	38.2%
3PT%	6-16	37.5%
FT%	4-6	66.7%

Dead Ball Rebounds: 1, 0

Technical Fouls::NONE

Florida State - 49

NO.	Name	Min	FG			Rebounds			Fouls		TP	AS	TO	ST	Blocks		+/-
			M-A	M-A	M-A	OR	DR	TOT	PF	FD					BS	BA	
21	Makayla Timpson	F 07:36	0-4	0-0	0-0	1	4	5	0	0	0	0	1	0	0	3	1
23	Erin Howard	F 11:27	2-4	1-3	0-0	1	0	1	2	0	5	1	2	1	0	0	-2
00	Ta'Niya Latson	G 13:40	5-10	0-2	11-11	1	2	3	1	6	21	2	0	0	0	0	11
1	Jazmine Massengill	G 11:32	1-1	0-0	0-0	0	0	0	0	0	2	4	0	0	0	0	3
4	Sara Bejedi	G 12:30	2-3	0-1	1-1	0	2	2	1	2	5	1	0	0	0	0	10
32	Valencia Myers	12:24	2-2	0-0	0-0	2	2	4	1	1	4	0	0	0	0	0	12
3	O'Mariah Gordon	09:57	0-4	0-1	0-0	1	0	1	0	1	0	1	0	1	0	0	0
5	Mariana Valenzuela	08:33	2-3	2-2	0-0	0	1	1	0	0	6	0	0	0	0	0	15
11	Taylor O'Brien	08:44	2-3	1-1	1-2	1	1	2	1	1	6	0	0	1	0	0	12
2	Brianna Turnage	03:37	0-1	0-1	0-0	0	1	1	0	0	0	0	0	0	1	0	3
Team						0	0	0			0		0				
Totals			16-35	4-11	13-14	7	13	20	6	11	49	9	3	3	1	3	13

Shooting By Period		
3 rd FG%	8-16	50.0%
3PT%	0-4	0.0%
FT%	7-7	100%
4 th FG%	8-19	42.1%
3PT%	4-7	57.1%
FT%	6-7	85.7%
GM FG%	16-35	45.7%
3PT%	4-11	36.4%
FT%	13-14	92.9%

Dead Ball Rebounds: 3, 0

Technical Fouls::NONE

	CU	FSU
Biggest lead	0 (1 st 10:00)	31 (4 th 0:10)
Best Scoring Run	6(3 rd 4:43)	9(4 th 9:21)
Lead Changes	0	
Times Tied	0	
Time with Lead	00:00	19:19

	CU	FSU
Points from		
Turnovers	2	12
Paint	10	22
Second Chance	7	4
Fast Breaks	2	13
Bench	8	16

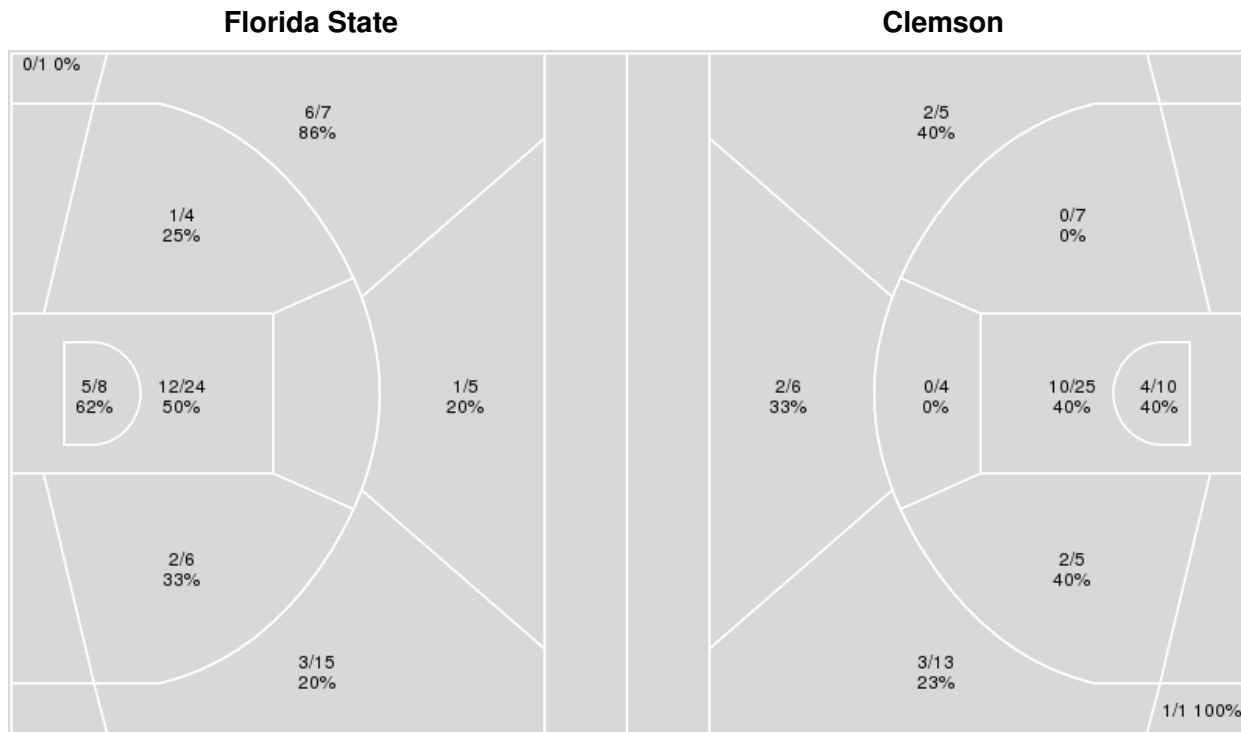
Period by Period Scoring					
	1st	2nd	3rd	4th	TOT
CU	15	11	24	12	62
FSU	26	18	23	26	93



Officials: Dee Kantner, John Capolino, Krystle Apellaniz

{ Players => All; } FG Types => All; Results => All;

{ Players => All; } FG Types => All; Results => All;



Florida State	M/A	%
Field Goals	30/70	43
2 Points	20/42	48
3 Points	10/28	36
Free Throws	23/25	92

Clemson	M/A	%
Field Goals	24/76	32
2 Points	16/51	31
3 Points	8/25	32
Free Throws	6/9	67



Clemson at Florida State

01/05/23 Donald L. Tucker Center, Tallahassee
2022-23 Women's Basketball

Game Time: 6:00 PM
Game Duration: 1:52
Attendance: 2,009

Officials: Dee Kantner, John Capolino, Krystle Apellaniz

Clemson

No	Name	Mins		Score		Points Diff		Points per Min		Assists		Rebounds		Steals		Turnovers	
		On	Off	On	Off	On	Off	On	Off	On	Off	On	Off	On	Off	On	Off
0	Brie Perpignan	21:42	18:18	37 - 49	25 - 44	-12	-19	1.71	1.37	9	6	22	23	3	2	8	7
2	Daisha Bradford	30:07	09:53	47 - 66	15 - 27	-19	-12	1.56	1.52	12	3	36	9	4	1	8	7
3	MaKayla Elmore	09:39	30:21	11 - 20	51 - 73	-9	-22	1.14	1.68	4	11	11	34	1	4	4	11
4	Weronika Hipp	03:10	36:50	4 - 10	58 - 83	-6	-25	1.26	1.57	1	14	2	43	0	5	2	13
5	Amari Robinson	28:14	11:46	49 - 66	13 - 27	-17	-14	1.74	1.10	12	3	31	14	4	1	8	7
12	Hannah Hank	23:16	16:44	31 - 56	31 - 37	-25	-6	1.33	1.85	6	9	22	23	4	1	10	5
15	Kionna Gaines	09:57	30:03	22 - 20	40 - 73	2	-33	2.21	1.33	6	9	12	33	0	5	4	11
21	Eno Inyang	16:23	23:37	29 - 34	33 - 59	-5	-26	1.77	1.40	7	8	25	20	1	4	7	8
22	Ruby Whitehorn	28:36	11:24	40 - 71	22 - 22	-31	0	1.40	1.93	9	6	30	15	5	0	10	5
24	Ale'Jah Douglas	20:55	19:05	32 - 55	30 - 38	-23	-8	1.53	1.57	8	7	23	22	3	2	10	5
30	Madi Ott	08:01	31:59	8 - 18	54 - 75	-10	-21	1.00	1.69	1	14	11	34	0	5	4	11

Florida State

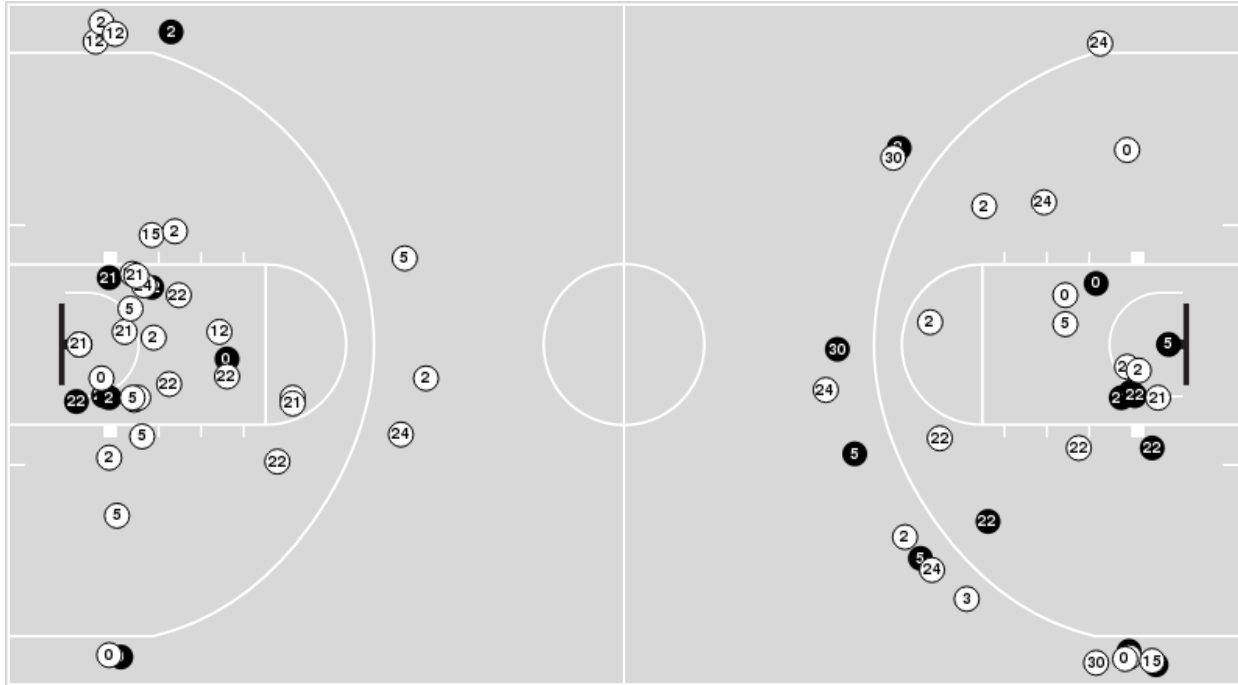
No	Name	Mins		Score		Points Diff		Points per Min		Assists		Rebounds		Steals		Turnovers	
		On	Off	On	Off	On	Off	On	Off	On	Off	On	Off	On	Off	On	Off
00	Ta'Niya Latson	29:08	10:52	71 - 48	22 - 14	23	8	2.44	2.02	15	5	30	15	3	4	7	2
1	Jazmine Massengill	28:26	11:34	71 - 44	22 - 18	27	4	2.50	1.90	17	3	28	17	4	3	6	3
2	Brianna Turnage	07:27	32:33	7 - 4	86 - 58	3	28	0.94	2.64	1	19	16	29	2	5	4	5
3	O'Mariah Gordon	18:54	21:06	48 - 22	45 - 40	26	5	2.54	2.13	12	8	24	21	6	1	1	8
4	Sara Bejedi	20:38	19:22	45 - 45	48 - 17	0	31	2.18	2.48	8	12	19	26	1	6	7	2
5	Mariana Valenzuela	18:12	21:48	43 - 32	50 - 30	11	20	2.36	2.29	6	14	21	24	2	5	5	4
11	Taylor O'Brien	15:27	24:33	37 - 23	56 - 39	14	17	2.39	2.28	7	13	18	27	5	2	2	7
21	Makayla Timpson	15:37	24:23	26 - 20	67 - 42	6	25	1.66	2.75	5	15	24	21	3	4	7	2
23	Erin Howard	21:48	18:12	50 - 30	43 - 32	20	11	2.29	2.36	14	6	24	21	5	2	4	5
32	Valencia Myers	24:23	15:37	67 - 42	26 - 20	25	6	2.75	1.66	15	5	21	24	4	3	2	7



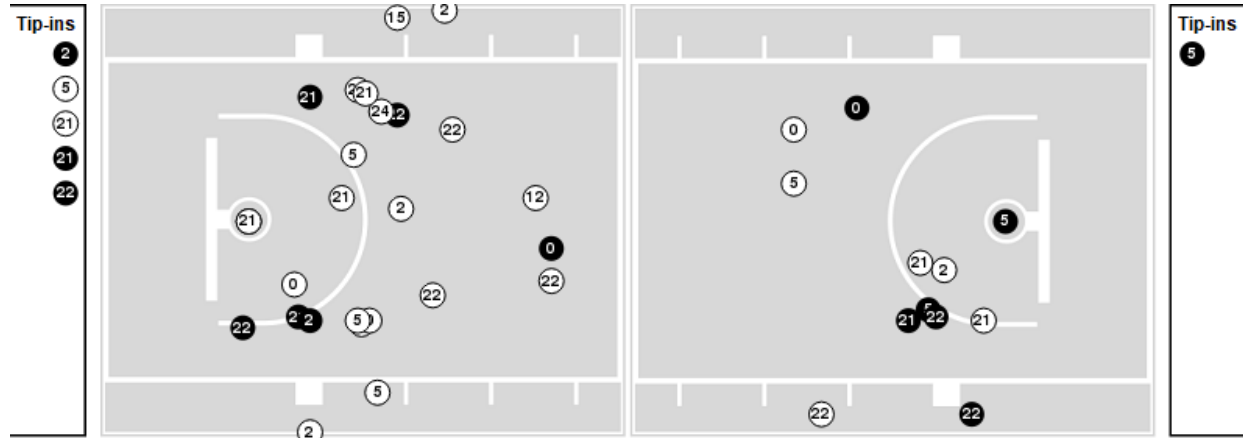
Officials: Dee Kantner, John Capolino, Krystle Apellaniz

Players => AllFG Types=>AllResults=>All
Clemson

All Field Goals



Blow Up Chart



● Made ○ Missed N - Player Number

Clemson	M/A	%
Field Goals	24/76	32
2 Points	16/51	31
3 Points	8/25	32
Free Throws	6/9	67

Clemson	M/A	%
Points in the Paint	28 (14 / 35)	40
Fast Break Points	6 (4/4)	100
Second Chance Points	17 (10/21)	48
Effective FG%	37	

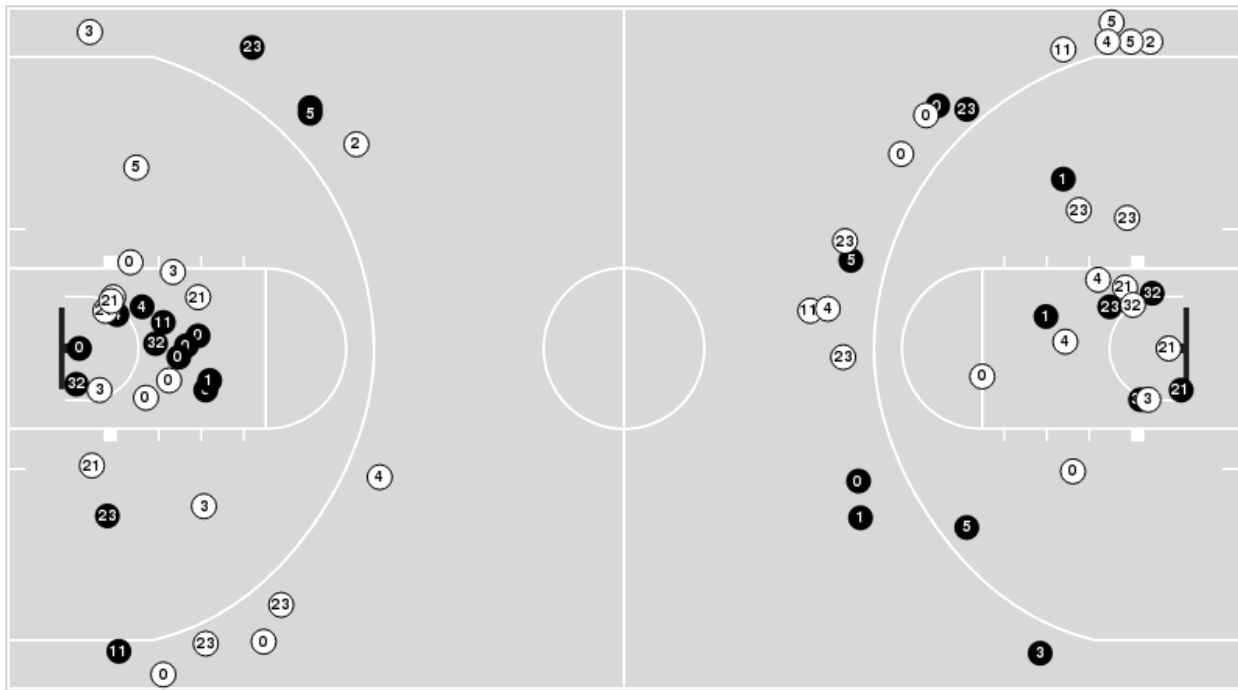


Officials: Dee Kantner, John Capolino, Krystle Apellaniz

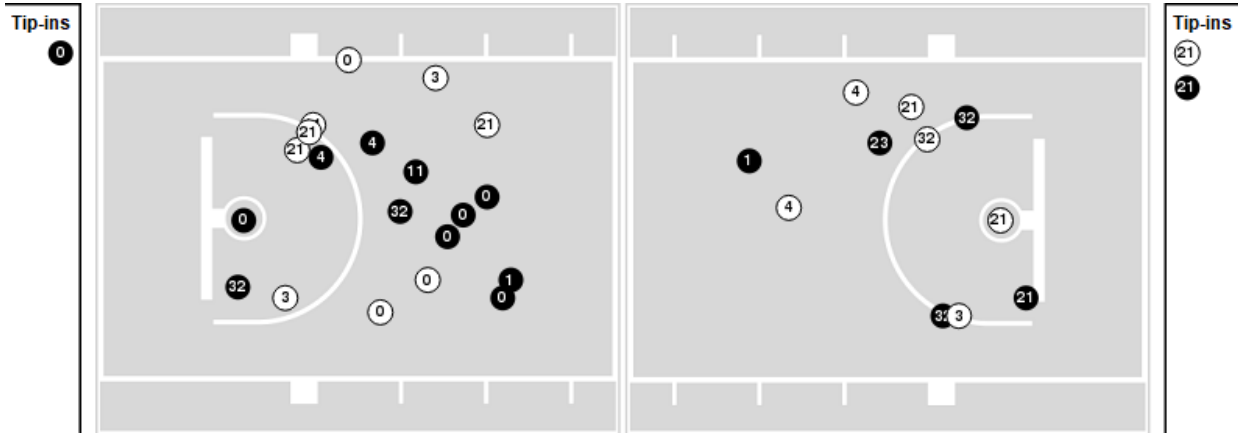
Players => AllFG Types=>AllResults=>All

Florida State

All Field Goals



Blow Up Chart



● Made ○ Missed N - Player Number

Florida State	M/A	%
Field Goals	30/70	43
2 Points	20/42	48
3 Points	10/28	36
Free Throws	23/25	92

Florida State	M/A	%
Points in the Paint	34 (17 / 32)	53
Fast Break Points	22 (14/16)	88
Second Chance Points	9 (6/16)	38
Effective FG%	50	



Clemson at Florida State

01/05/23 Donald L. Tucker Center, Tallahassee
2022-23 Women's Basketball

Game Time: 6:00 PM
Game Duration: 1:52
Attendance: 2,009

Officials: Dee Kantner, John Capolino, Krystle Apellaniz

Clemson

Lineup	Quarter On	Time On	Quarter Off	Time Off	Time on Court	Score	Score Diff	Reb	Stl	Tov	Ass	PPP
0- Perpignan B/2- Bradford D/5- Robinson A/12- Hank H/22- Whitehorn R/	1	10:00	1	06:41	03:19	2-4	-2	5	1	0	0	0.4000
2- Bradford D/5- Robinson A/12- Hank H/22- Whitehorn R/24- Douglas A/	1	06:41	1	05:32	01:09	2-8	-6	0	0	0	1	1.0000
0- Perpignan B/5- Robinson A/21- Inyang E/22- Whitehorn R/24- Douglas A/	1	05:32	1	05:04	00:28	0-0	0	0	0	0	0	0.0000
0- Perpignan B/3- Elmore M/21- Inyang E/22- Whitehorn R/24- Douglas A/	1	05:04	1	04:15	00:49	2-2	0	1	1	1	1	1.0000
0- Perpignan B/2- Bradford D/5- Robinson A/15- Gaines K/21- Inyang E/	1	04:15	1	03:20	00:55	4-2	2	3	0	0	1	1.3889
0- Perpignan B/2- Bradford D/5- Robinson A/12- Hank H/15- Gaines K/	1	03:20	1	02:30	00:50	5-2	3	1	0	0	1	2.5000
0- Perpignan B/2- Bradford D/5- Robinson A/12- Hank H/22- Whitehorn R/	1	02:30	1	01:31	00:59	0-3	-3	1	0	0	0	0.0000
2- Bradford D/5- Robinson A/12- Hank H/22- Whitehorn R/24- Douglas A/	1	01:31	2	10:00	01:31	0-5	-5	0	0	1	0	0.0000
2- Bradford D/5- Robinson A/21- Inyang E/22- Whitehorn R/24- Douglas A/	2	10:00	2	08:57	01:03	0-4	-4	3	0	1	0	0.0000
2- Bradford D/3- Elmore M/5- Robinson A/15- Gaines K/30- Ott M/	2	08:57	2	06:37	02:20	0-2	-2	4	0	1	0	0.0000
0- Perpignan B/12- Hank H/21- Inyang E/22- Whitehorn R/24- Douglas A/	2	06:37	2	04:05	02:32	5-7	-2	3	0	2	1	0.9191
2- Bradford D/5- Robinson A/12- Hank H/22- Whitehorn R/24- Douglas A/	2	04:05	2	01:21	02:44	6-5	1	3	2	1	1	1.0000
2- Bradford D/12- Hank H/21- Inyang E/22- Whitehorn R/24- Douglas A/	2	01:21	2	00:22	00:58	0-0	0	1	0	0	0	0.0000
2- Bradford D/3- Elmore M/21- Inyang E/22- Whitehorn R/24- Douglas A/	2	00:22	3	10:00	00:23	0-0	0	1	0	0	0	0.0000
0- Perpignan B/2- Bradford D/5- Robinson A/12- Hank H/22- Whitehorn R/	3	10:00	3	05:47	04:13	9-8	1	3	1	2	2	1.1250
2- Bradford D/5- Robinson A/21- Inyang E/22- Whitehorn R/24- Douglas A/	3	05:47	3	05:31	00:16	0-0	0	0	0	0	0	0.0000
2- Bradford D/5- Robinson A/15- Gaines K/21- Inyang E/24- Douglas A/	3	05:31	3	03:44	01:47	9-4	5	1	0	0	3	3.0000
2- Bradford D/5- Robinson A/21- Inyang E/22- Whitehorn R/24- Douglas A/	3	03:44	3	03:12	00:32	0-0	0	3	0	0	0	0.0000
0- Perpignan B/2- Bradford D/5- Robinson A/21- Inyang E/22- Whitehorn R/	3	03:12	3	02:59	00:13	1-3	-2	0	0	0	0	1.1364
0- Perpignan B/2- Bradford D/3- Elmore M/5- Robinson A/22- Whitehorn R/	3	02:59	3	01:08	01:51	5-4	1	1	0	0	2	1.2500
0- Perpignan B/5- Robinson A/12- Hank H/22- Whitehorn R/24- Douglas A/	3	01:08	4	10:00	01:08	0-4	-4	0	0	1	0	0.0000
0- Perpignan B/2- Bradford D/12- Hank H/21- Inyang E/22- Whitehorn R/	4	10:00	4	08:28	01:32	2-6	-4	2	0	0	0	1.0000
0- Perpignan B/2- Bradford D/5- Robinson A/21- Inyang E/22- Whitehorn R/	4	08:28	4	07:18	01:10	2-4	-2	0	0	0	1	1.0000
5- Robinson A/21- Inyang E/22- Whitehorn R/24- Douglas A/30- Ott M/	4	07:18	4	06:37	00:41	4-0	4	2	0	0	0	2.1277
5- Robinson A/12- Hank H/22- Whitehorn R/24- Douglas A/30- Ott M/	4	06:37	4	05:32	01:05	0-4	-4	1	0	1	0	0.0000
0- Perpignan B/2- Bradford D/12- Hank H/15- Gaines K/21- Inyang E/	4	05:32	4	04:16	01:16	0-0	0	2	0	2	0	0.0000
0- Perpignan B/2- Bradford D/3- Elmore M/15- Gaines K/21- Inyang E/	4	04:16	4	03:55	00:21	0-0	0	0	0	0	0	0.0000
0- Perpignan B/2- Bradford D/3- Elmore M/21- Inyang E/30- Ott M/	4	03:55	4	03:49	00:06	0-0	0	0	0	0	0	0.0000
2- Bradford D/3- Elmore M/21- Inyang E/24- Douglas A/30- Ott M/	4	03:49	4	03:10	00:39	0-2	-2	2	0	0	0	0.0000
3- Elmore M/4- Hipp W/21- Inyang E/24- Douglas A/30- Ott M/	4	03:10	4	02:28	00:42	0-0	0	1	0	1	0	0.0000
3- Elmore M/4- Hipp W/15- Gaines K/24- Douglas A/30- Ott M/	4	02:28	4	00:00	02:28	4-10	-6	1	0	1	1	1.0309



Clemson at Florida State

01/05/23 Donald L. Tucker Center, Tallahassee
2022-23 Women's Basketball

Game Time: 6:00 PM
Game Duration: 1:52
Attendance: 2,009

Officials: Dee Kantner, John Capolino, Krystle Apellaniz

Florida State

Lineup	Quarter On	Time On	Quarter Off	Time Off	Time on Court	Score	Score Diff	Reb	Stl	Tov	Ass	PPP
00- Latson T/ 1- Massengill J/ 4- Bejedi S/ 21- Timpson M/ 23- Howard E/	1	10:00	1	07:51	02:09	0-2	-2	3	0	1	0	0.0000
00- Latson T/ 1- Massengill J/ 3- Gordon O/ 21- Timpson M/ 23- Howard E/	1	07:51	1	06:41	01:10	4-0	4	2	0	0	1	2.0000
00- Latson T/ 1- Massengill J/ 3- Gordon O/ 23- Howard E/ 32- Myers V/	1	06:41	1	05:32	01:09	8-2	6	1	0	0	3	2.6667
1- Massengill J/ 3- Gordon O/ 5- Valenzuela M/ 11- O'Brien T/ 32- Myers V/	1	05:32	1	04:47	00:45	2-0	2	1	0	0	0	2.2727
1- Massengill J/ 4- Bejedi S/ 5- Valenzuela M/ 11- O'Brien T/ 32- Myers V/	1	04:47	1	04:23	00:24	0-2	-2	0	0	1	0	0.0000
00- Latson T/ 4- Bejedi S/ 5- Valenzuela M/ 11- O'Brien T/ 32- Myers V/	1	04:23	1	03:22	01:01	2-2	0	1	0	0	0	0.6944
00- Latson T/ 4- Bejedi S/ 5- Valenzuela M/ 11- O'Brien T/ 21- Timpson M/	1	03:22	1	03:20	00:02	0-0	0	0	0	0	0	0.0000
00- Latson T/ 4- Bejedi S/ 5- Valenzuela M/ 11- O'Brien T/ 32- Myers V/	1	03:20	1	03:11	00:09	0-2	-2	0	0	0	0	0.0000
00- Latson T/ 1- Massengill J/ 4- Bejedi S/ 5- Valenzuela M/ 32- Myers V/	1	03:11	1	02:30	00:41	2-5	-3	0	0	0	0	1.0638
00- Latson T/ 1- Massengill J/ 3- Gordon O/ 23- Howard E/ 32- Myers V/	1	02:30	2	10:00	02:30	8-0	8	2	1	0	2	1.6393
1- Massengill J/ 3- Gordon O/ 11- O'Brien T/ 23- Howard E/ 32- Myers V/	2	10:00	2	06:37	03:23	6-0	6	6	2	0	2	0.8721
00- Latson T/ 1- Massengill J/ 5- Valenzuela M/ 11- O'Brien T/ 32- Myers V/	2	06:37	2	06:01	00:36	3-5	-2	0	0	0	1	3.0000
00- Latson T/ 1- Massengill J/ 2- Turnage B/ 5- Valenzuela M/ 21- Timpson M/	2	06:01	2	04:05	01:56	4-0	4	3	1	1	1	1.3333
00- Latson T/ 2- Turnage B/ 4- Bejedi S/ 5- Valenzuela M/ 21- Timpson M/	2	04:05	2	02:11	01:54	0-4	-4	5	0	2	0	0.0000
00- Latson T/ 1- Massengill J/ 4- Bejedi S/ 5- Valenzuela M/ 21- Timpson M/	2	02:11	2	01:21	00:50	5-2	3	1	0	1	1	1.4535
00- Latson T/ 1- Massengill J/ 4- Bejedi S/ 5- Valenzuela M/ 32- Myers V/	2	01:21	2	00:22	00:58	0-0	0	0	0	0	0	0.0000
00- Latson T/ 1- Massengill J/ 5- Valenzuela M/ 11- O'Brien T/ 32- Myers V/	2	00:22	3	10:00	00:23	0-0	0	0	0	0	0	0.0000
00- Latson T/ 1- Massengill J/ 4- Bejedi S/ 21- Timpson M/ 23- Howard E/	3	10:00	3	07:19	02:41	2-4	-2	2	0	1	0	0.5000
00- Latson T/ 1- Massengill J/ 4- Bejedi S/ 23- Howard E/ 32- Myers V/	3	07:19	3	05:31	01:48	8-5	3	1	0	1	3	1.6393
1- Massengill J/ 3- Gordon O/ 4- Bejedi S/ 23- Howard E/ 32- Myers V/	3	05:31	3	03:59	01:32	2-9	-7	0	0	0	1	1.0000
00- Latson T/ 1- Massengill J/ 3- Gordon O/ 5- Valenzuela M/ 21- Timpson M/	3	03:59	3	01:08	02:51	7-6	1	3	0	0	1	1.3158
00- Latson T/ 1- Massengill J/ 4- Bejedi S/ 5- Valenzuela M/ 32- Myers V/	3	01:08	4	10:00	01:08	4-0	4	2	0	0	0	1.3889
1- Massengill J/ 4- Bejedi S/ 5- Valenzuela M/ 11- O'Brien T/ 32- Myers V/	4	10:00	4	09:21	00:39	2-0	2	1	0	0	0	2.0000
1- Massengill J/ 4- Bejedi S/ 11- O'Brien T/ 23- Howard E/ 32- Myers V/	4	09:21	4	08:28	00:53	4-2	2	0	0	0	1	2.7778
00- Latson T/ 4- Bejedi S/ 11- O'Brien T/ 23- Howard E/ 32- Myers V/	4	08:28	4	07:18	01:10	4-2	2	1	0	0	0	2.0000
00- Latson T/ 3- Gordon O/ 11- O'Brien T/ 23- Howard E/ 32- Myers V/	4	07:18	4	06:37	00:41	0-2	-2	0	0	0	0	0.0000
00- Latson T/ 3- Gordon O/ 11- O'Brien T/ 21- Timpson M/ 23- Howard E/	4	06:37	4	06:16	00:21	3-2	1	0	1	0	1	3.0000
2- Turnage B/ 3- Gordon O/ 11- O'Brien T/ 21- Timpson M/ 23- Howard E/	4	06:16	4	04:33	01:43	1-0	1	5	1	1	0	0.2577
2- Turnage B/ 3- Gordon O/ 11- O'Brien T/ 23- Howard E/ 32- Myers V/	4	04:33	4	03:55	00:38	0-0	0	1	0	0	0	0.0000
00- Latson T/ 2- Turnage B/ 3- Gordon O/ 5- Valenzuela M/ 32- Myers V/	4	03:55	4	02:39	01:16	2-0	2	2	0	0	0	0.6944
00- Latson T/ 4- Bejedi S/ 5- Valenzuela M/ 11- O'Brien T/ 32- Myers V/	4	02:39	4	00:55	01:44	5-3	2	1	0	0	1	1.7361
3- Gordon O/ 4- Bejedi S/ 5- Valenzuela M/ 11- O'Brien T/ 32- Myers V/	4	00:55	4	00:00	00:55	5-1	4	1	1	0	1	2.5000



Clemson at Florida State

01/05/23 Donald L. Tucker Center, Tallahassee
2022-23 Women's Basketball

Game Time: 6:00 PM

Game Duration: 1:52

Attendance: 2,009

Officials: Dee Kantner, John Capolino, Krystle Apellaniz

Clemson

Lineup	Time	Score	Score Diff	Pts/Min	Reb	Stl	Tov	Ass	PPP
0- Perpignan B/ 2- Bradford D/ 5- Robinson A/ 12- Hank H/ 22- Whitehorn R/	08:31	11-15	-4	1.2916	9	2	2	2	0.7333
2- Bradford D/ 5- Robinson A/ 12- Hank H/ 22- Whitehorn R/ 24- Douglas A/	05:24	8-18	-10	1.4815	3	2	2	2	0.8000
0- Perpignan B/ 12- Hank H/ 21- Inyang E/ 22- Whitehorn R/ 24- Douglas A/	02:32	5-7	-2	1.9737	3	0	2	1	0.9191
3- Elmore M/ 4- Hipp W/ 15- Gaines K/ 24- Douglas A/ 30- Ott M/	02:28	4-10	-6	1.6216	1	0	1	1	1.0309
2- Bradford D/ 3- Elmore M/ 5- Robinson A/ 15- Gaines K/ 30- Ott M/	02:20	0-2	-2	0.0000	4	0	1	0	0.0000
2- Bradford D/ 5- Robinson A/ 21- Inyang E/ 22- Whitehorn R/ 24- Douglas A/	01:51	0-4	-4	0.0000	6	0	1	0	0.0000
0- Perpignan B/ 2- Bradford D/ 3- Elmore M/ 5- Robinson A/ 22- Whitehorn R/	01:51	5-4	1	2.7027	1	0	0	2	1.2500
2- Bradford D/ 5- Robinson A/ 15- Gaines K/ 21- Inyang E/ 24- Douglas A/	01:47	9-4	5	5.0467	1	0	0	3	3.0000
0- Perpignan B/ 2- Bradford D/ 12- Hank H/ 21- Inyang E/ 22- Whitehorn R/	01:32	2-6	-4	1.3043	2	0	0	0	1.0000
0- Perpignan B/ 2- Bradford D/ 5- Robinson A/ 21- Inyang E/ 22- Whitehorn R/	01:23	3-7	-4	2.1687	0	0	0	1	1.0417
0- Perpignan B/ 2- Bradford D/ 12- Hank H/ 15- Gaines K/ 21- Inyang E/	01:16	0-0	0	0.0000	2	0	2	0	0.0000
0- Perpignan B/ 5- Robinson A/ 12- Hank H/ 22- Whitehorn R/ 24- Douglas A/	01:08	0-4	-4	0.0000	0	0	1	0	0.0000
5- Robinson A/ 12- Hank H/ 22- Whitehorn R/ 24- Douglas A/ 30- Ott M/	01:05	0-4	-4	0.0000	1	0	1	0	0.0000
2- Bradford D/ 12- Hank H/ 21- Inyang E/ 22- Whitehorn R/ 24- Douglas A/	00:58	0-0	0	0.0000	1	0	0	0	0.0000
0- Perpignan B/ 2- Bradford D/ 5- Robinson A/ 15- Gaines K/ 21- Inyang E/	00:55	4-2	2	4.3636	3	0	0	1	1.3889
0- Perpignan B/ 2- Bradford D/ 5- Robinson A/ 12- Hank H/ 15- Gaines K/	00:50	5-2	3	6.0000	1	0	0	1	2.5000
0- Perpignan B/ 3- Elmore M/ 21- Inyang E/ 22- Whitehorn R/ 24- Douglas A/	00:49	2-2	0	2.4490	1	1	1	1	1.0000
3- Elmore M/ 4- Hipp W/ 21- Inyang E/ 24- Douglas A/ 30- Ott M/	00:42	0-0	0	0.0000	1	0	1	0	0.0000
5- Robinson A/ 21- Inyang E/ 22- Whitehorn R/ 24- Douglas A/ 30- Ott M/	00:41	4-0	4	5.8537	2	0	0	0	2.1277
2- Bradford D/ 3- Elmore M/ 21- Inyang E/ 24- Douglas A/ 30- Ott M/	00:39	0-2	-2	0.0000	2	0	0	0	0.0000
0- Perpignan B/ 5- Robinson A/ 21- Inyang E/ 22- Whitehorn R/ 24- Douglas A/	00:28	0-0	0	0.0000	0	0	0	0	0.0000
2- Bradford D/ 3- Elmore M/ 21- Inyang E/ 22- Whitehorn R/ 24- Douglas A/	00:23	0-0	0	0.0000	1	0	0	0	0.0000
0- Perpignan B/ 2- Bradford D/ 3- Elmore M/ 15- Gaines K/ 21- Inyang E/	00:21	0-0	0	0.0000	0	0	0	0	0.0000
0- Perpignan B/ 2- Bradford D/ 3- Elmore M/ 21- Inyang E/ 30- Ott M/	00:06	0-0	0	0.0000	0	0	0	0	0.0000



Officials: Dee Kantner, John Capolino, Krystle Apellaniz

Florida State

Lineup	Time	Score	Score Diff	Pts/Min	Reb	Stl	Tov	Ass	PPP
00- Latson T/ 1- Massengill J/ 4- Bejedi S/ 21- Timpson M/ 23- Howard E/	04:50	2-6	-4	0.4138	5	0	2	0	0.2857
00- Latson T/ 1- Massengill J/ 3- Gordon O/ 23- Howard E/ 32- Myers V/	03:39	16-2	14	4.3836	3	1	0	5	2.0305
1- Massengill J/ 3- Gordon O/ 11- O'Brien T/ 23- Howard E/ 32- Myers V/	03:23	6-0	6	1.7734	6	2	0	2	0.8721
00- Latson T/ 4- Bejedi S/ 5- Valenzuela M/ 11- O'Brien T/ 32- Myers V/	02:54	7-7	0	2.4138	2	0	0	1	1.2153
00- Latson T/ 1- Massengill J/ 3- Gordon O/ 5- Valenzuela M/ 21- Timpson M/	02:51	7-6	1	2.4561	3	0	0	1	1.3158
00- Latson T/ 1- Massengill J/ 4- Bejedi S/ 5- Valenzuela M/ 32- Myers V/	02:47	6-5	1	2.1557	2	0	0	0	1.0417
00- Latson T/ 1- Massengill J/ 2- Turnage B/ 5- Valenzuela M/ 21- Timpson M/	01:56	4-0	4	2.0690	3	1	1	1	1.3333
00- Latson T/ 2- Turnage B/ 4- Bejedi S/ 5- Valenzuela M/ 21- Timpson M/	01:54	0-4	-4	0.0000	5	0	2	0	0.0000
00- Latson T/ 1- Massengill J/ 4- Bejedi S/ 23- Howard E/ 32- Myers V/	01:48	8-5	3	4.4444	1	0	1	3	1.6393
2- Turnage B/ 3- Gordon O/ 11- O'Brien T/ 21- Timpson M/ 23- Howard E/	01:43	1-0	1	0.5825	5	1	1	0	0.2577
1- Massengill J/ 3- Gordon O/ 4- Bejedi S/ 23- Howard E/ 32- Myers V/	01:32	2-9	-7	1.3043	0	0	0	1	1.0000
00- Latson T/ 2- Turnage B/ 3- Gordon O/ 5- Valenzuela M/ 32- Myers V/	01:16	2-0	2	1.5789	2	0	0	0	0.6944
00- Latson T/ 1- Massengill J/ 3- Gordon O/ 21- Timpson M/ 23- Howard E/	01:10	4-0	4	3.4286	2	0	0	1	2.0000
00- Latson T/ 4- Bejedi S/ 11- O'Brien T/ 23- Howard E/ 32- Myers V/	01:10	4-2	2	3.4286	1	0	0	0	2.0000
1- Massengill J/ 4- Bejedi S/ 5- Valenzuela M/ 11- O'Brien T/ 32- Myers V/	01:03	2-2	0	1.9048	1	0	1	0	1.0000
00- Latson T/ 1- Massengill J/ 5- Valenzuela M/ 11- O'Brien T/ 32- Myers V/	00:59	3-5	-2	3.0508	0	0	0	1	3.0000
3- Gordon O/ 4- Bejedi S/ 5- Valenzuela M/ 11- O'Brien T/ 32- Myers V/	00:55	5-1	4	5.4545	1	1	0	1	2.5000
1- Massengill J/ 4- Bejedi S/ 11- O'Brien T/ 23- Howard E/ 32- Myers V/	00:53	4-2	2	4.5283	0	0	0	1	2.7778
00- Latson T/ 1- Massengill J/ 4- Bejedi S/ 5- Valenzuela M/ 21- Timpson M/	00:50	5-2	3	6.0000	1	0	1	1	1.4535
1- Massengill J/ 3- Gordon O/ 5- Valenzuela M/ 11- O'Brien T/ 32- Myers V/	00:45	2-0	2	2.6667	1	0	0	0	2.2727
00- Latson T/ 3- Gordon O/ 11- O'Brien T/ 23- Howard E/ 32- Myers V/	00:41	0-2	-2	0.0000	0	0	0	0	0.0000
2- Turnage B/ 3- Gordon O/ 11- O'Brien T/ 23- Howard E/ 32- Myers V/	00:38	0-0	0	0.0000	1	0	0	0	0.0000
00- Latson T/ 3- Gordon O/ 11- O'Brien T/ 21- Timpson M/ 23- Howard E/	00:21	3-2	1	8.5714	0	1	0	1	3.0000
00- Latson T/ 4- Bejedi S/ 5- Valenzuela M/ 11- O'Brien T/ 21- Timpson M/	00:02	0-0	0	0.0000	0	0	0	0	0.0000