



Officials: Bryan Brunette, Fatou Cissoko-Stephens, Daryl Humphrey

Clemson - 72

Record: 12-7 (3-4)

NO.	Name	F	Min	FG		3P		FT		Rebounds			Fouls		TP	AS	TO	ST	Blocks		+/-
				M-A	M-A	M-A	OR	DR	TOT	PF	FD	BS	BA								
5	Amari Robinson	F	33:37	8-12	0-0	2-2	2	4	6	2	2	18	3	1	2	1	0	17			
12	Hannah Hank	C	25:49	3-9	0-2	2-2	3	9	12	1	4	8	8	1	1	1	1	24			
0	Brie Perpignan	G	33:30	3-8	1-4	2-2	2	3	5	2	2	9	2	2	1	0	0	15			
2	Daisha Bradford	G	24:21	3-6	2-3	0-0	1	0	1	1	1	8	4	4	3	1	1	11			
22	Ruby Whitehorn	G	25:23	4-9	0-0	0-0	0	1	1	3	0	8	1	2	3	0	0	2			
24	Ale'Jah Douglas		22:54	1-3	1-3	1-2	0	1	1	2	1	4	4	2	0	0	0	-1			
30	Madi Ott		10:29	2-5	1-4	0-0	0	1	1	0	1	5	1	0	2	0	0	14			
21	Eno Inyang		12:53	5-8	0-0	2-2	0	2	2	3	1	12	0	1	0	0	1	-1			
3	MaKayla Elmore		07:41	0-0	0-0	0-0	0	1	1	0	0	0	0	0	0	0	0	-10			
15	Kionna Gaines		03:23	0-1	0-0	0-0	0	0	0	0	0	0	0	1	0	0	0	4			
Team							2	2	4			0		0							
<b>Totals</b>				29-61	5-16	9-10	10	24	34	14	12	72	23	14	12	3	3	15			

Technical Fouls::NONE

Shooting By Period		
1st FG%	5-13	38.5%
3PT%	0-3	0.0%
FT%	0-0	0%
2nd FG%	4-17	23.5%
3PT%	1-5	20.0%
FT%	5-6	83.3%
3rd FG%	10-14	71.4%
3PT%	2-3	66.7%
FT%	2-2	100%
4th FG%	10-17	58.8%
3PT%	2-5	40.0%
FT%	2-2	100%
GM FG%	29-61	47.5%
3PT%	5-16	31.3%
FT%	9-10	90.0%

Dead Ball Rebounds: 1, 0

Pitt - 57

Record: 7-10 (0-6)

NO.	Name	F	Min	FG		3P		FT		Rebounds			Fouls		TP	AS	TO	ST	Blocks		+/-
				M-A	M-A	M-A	OR	DR	TOT	PF	FD	BS	BA								
5	Amber Brown	F	35:00	5-9	0-0	0-2	0	1	1	1	2	10	3	3	2	0	1	-15			
21	Maliyah Johnson	F	35:05	6-13	3-9	0-0	1	1	2	0	1	15	1	3	1	0	0	-14			
23	Avery Strickland	F	25:16	1-7	0-5	0-0	1	0	1	0	0	2	0	1	0	0	0	-10			
2	Liatu King	G	26:58	3-10	0-0	4-5	3	10	13	1	6	10	2	2	1	2	2	-8			
11	Marley Washenitz	G	17:32	2-5	0-0	1-1	0	0	0	2	1	5	2	3	1	0	0	-10			
4	Emy Hayford		23:15	1-1	1-1	2-2	1	2	3	3	3	5	2	3	0	0	0	-9			
1	Dayshanette Harris		15:46	2-5	0-2	0-0	2	1	3	2	1	4	1	4	0	0	0	5			
22	Gabby Hutcherson		17:15	2-4	2-3	0-0	0	5	5	3	0	6	2	1	0	1	0	-3			
3	Taisha Exanor		00:47	0-0	0-0	0-0	0	0	0	0	0	0	0	0	0	0	0	-4			
12	Aislin Malcolm		03:06	0-0	0-0	0-0	0	0	0	0	0	0	0	1	0	0	0	-7			
Team							2	2	4			0		0							
<b>Totals</b>				22-54	6-20	7-10	10	22	32	12	14	57	13	21	5	3	3	-15			

Technical Fouls::NONE

Shooting By Period		
1st FG%	8-14	57.1%
3PT%	2-4	50.0%
FT%	0-0	0%
2nd FG%	5-10	50.0%
3PT%	2-5	40.0%
FT%	4-6	66.7%
3rd FG%	3-14	21.4%
3PT%	0-6	0.0%
FT%	2-3	66.7%
4th FG%	6-16	37.5%
3PT%	2-5	40.0%
FT%	1-1	100%
GM FG%	22-54	40.7%
3PT%	6-20	30.0%
FT%	7-10	70.0%

Dead Ball Rebounds: 1, 0

	Clem	Pitt
Biggest lead	16 (4 <sup>th</sup> 2:08)	17 (2 <sup>nd</sup> 1:50)
Best Scoring Run	11 (3 <sup>rd</sup> 8:27)	14 (2 <sup>nd</sup> 9:36)
Lead Changes	4	
Times Tied	3	
Time with Lead	17:25	20:13

	Clem	Pitt
Points from		
Turnovers	24	8
Paint	36	30
Second Chance	12	4
Fast Breaks	6	14
Bench	21	15

	Period by Period Scoring				
	1st	2nd	3rd	4th	TOT
Clem	10	14	24	24	72
Pitt	18	16	8	15	57

**Clemson at Pitt**01/15/23 Petersen Events Center, Pittsburgh, PA  
Pitt vs. Clemson**Game Time:** 2:00 PM**Game Duration:** 1:45**Attendance:** 953**Officials:** Bryan Brunette, Fatou Cissoko-Stephens, Daryl Humphrey**Period 1****Quarter Starters:**

<b>Pitt</b>	2 King L	5 Brown A	11 Washenitz M	21 Johnson M	23 Strickland A
<b>Clem</b>	0 Perpignan B	2 Bradford D	5 Robinson A	12 Hank H	22 Whitehorn R

Game Time	Pitt	Score	Diff	Clem
10:00	2 KING L jumpball lost			12 HANK H jumpball won
09:40				0 PERPIGNAN B 3pt FG , jump shot missed
09:34				2 BRADFORD D offensive rebound (1)
09:18		<b>0-2</b>	<b>-2</b>	5 ROBINSON A 2pt FG second chance in the paint, layup made (2)
09:18				12 HANK H assist (1)
09:01	21 JOHNSON M turnover bad pass (1)			5 ROBINSON A steal (1)
08:52	5 BROWN A steal (1)			2 BRADFORD D turnover lost ball (1)
08:45	23 STRICKLAND A 2pt FG fast break from turnover in the paint, driving layup made (2)	<b>2-2</b>	<b>0</b>	
08:20				12 HANK H 2pt FG in the paint, jump shot missed
08:15	2 KING L defensive rebound (1)			
08:03	2 KING L 2pt FG in the paint, jump shot made (2)	<b>4-2</b>	<b>2</b>	
08:03	11 WASHENITZ M assist (1)			
07:45				5 ROBINSON A 2pt FG in the paint, layup missed
07:41				12 HANK H offensive rebound (1)
07:39		<b>4-4</b>	<b>0</b>	5 ROBINSON A 2pt FG second chance in the paint, layup made (4)
07:39				12 HANK H assist (2)
07:24	2 KING L turnover bad pass (1)			22 WHITEHORN R steal (1)
07:17				22 WHITEHORN R 2pt FG from turnover outside the paint, jump shot missed
07:17	2 KING L defensive rebound (2)			
07:17	jump ball situation			
07:04	11 WASHENITZ M 2pt FG outside the paint, jump shot made (2)	<b>6-4</b>	<b>2</b>	
06:52		<b>6-6</b>	<b>0</b>	5 ROBINSON A 2pt FG outside the paint, jump shot made (6)
06:52				12 HANK H assist (3)
06:37	2 KING L 2pt FG in the paint, layup blocked			
06:37				5 ROBINSON A block (1)
06:31				12 HANK H defensive rebound (2)
06:29		<b>6-8</b>	<b>-2</b>	0 PERPIGNAN B 2pt FG fast break in the paint, layup made (2)
06:21	11 WASHENITZ M turnover lost ball (1)			2 BRADFORD D steal (1)
06:21				2 BRADFORD D turnover out of bounds (2)
06:21	11 WASHENITZ M substitution out			
06:21	4 HAYFORD E substitution in			
06:21				2 BRADFORD D substitution out
06:21				22 WHITEHORN R substitution out
06:21				24 DOUGLAS A substitution in
06:21				30 OTT M substitution in
06:16	5 BROWN A 2pt FG from turnover in the paint, layup missed			
06:12	4 HAYFORD E offensive rebound (1)			
06:11	23 STRICKLAND A turnover bad pass (1)			5 ROBINSON A steal (2)
05:39		<b>6-10</b>	<b>-4</b>	5 ROBINSON A 2pt FG from turnover in the paint, layup made (8)
05:39				12 HANK H assist (4)



**Clemson at Pitt**

01/15/23 Petersen Events Center, Pittsburgh, PA  
Pitt vs. Clemson

**Game Time:** 2:00 PM  
**Game Duration:** 1:45  
**Attendance:** 953

**Officials:** Bryan Brunette, Fatou Cissoko-Stephens, Daryl Humphrey

Game Time	Pitt	Score	Diff	Clem
05:28	4 HAYFORD E foul drawn (1)			0 PERPIGNAN B foul personal (1 - 1)
05:28	2 KING L substitution out			
05:28	21 JOHNSON M substitution out			
05:28	1 HARRIS D substitution in			
05:28	22 HUTCHERSON G substitution in			
05:28				12 HANK H substitution out
05:28				21 INYANG E substitution in
05:09	4 HAYFORD E 3pt FG , jump shot made (3)	<b>9-10</b>	<b>-1</b>	
05:09	5 BROWN A assist (1)			
04:53				24 DOUGLAS A 3pt FG , jump shot missed
04:48	22 HUTCHERSON G defensive rebound (1)			
04:41	22 HUTCHERSON G 3pt FG , jump shot made (3)	<b>12-10</b>	<b>2</b>	
04:41	4 HAYFORD E assist (1)			
04:14				30 OTT M 3pt FG , jump shot missed
04:12	defensive rebound (5)			
04:12	Timeout media			
04:12	23 STRICKLAND A substitution out			
04:12	21 JOHNSON M substitution in			
04:12				0 PERPIGNAN B substitution out
04:12				5 ROBINSON A substitution out
04:12				30 OTT M substitution out
04:12				2 BRADFORD D substitution in
04:12				3 ELMORE M substitution in
04:12				22 WHITEHORN R substitution in
04:06	5 BROWN A 2pt FG fast break in the paint, layup made (2)	<b>14-10</b>	<b>4</b>	
04:06	22 HUTCHERSON G assist (1)			
03:48				21 INYANG E turnover bad pass (1)
03:30	21 JOHNSON M 3pt FG from turnover, jump shot missed			
03:26				3 ELMORE M defensive rebound (1)
03:05	5 BROWN A steal (2)			2 BRADFORD D turnover bad pass (3)
02:59	5 BROWN A 2pt FG fast break from turnover in the paint, layup made (4)	<b>16-10</b>	<b>6</b>	
02:40				22 WHITEHORN R turnover bad pass (1)
02:40	5 BROWN A substitution out			
02:40	2 KING L substitution in			
02:40				2 BRADFORD D substitution out
02:40				3 ELMORE M substitution out
02:40				21 INYANG E substitution out
02:40				22 WHITEHORN R substitution out
02:40				0 PERPIGNAN B substitution in
02:40				5 ROBINSON A substitution in
02:40				12 HANK H substitution in
02:40				15 GAINES K substitution in
02:30	1 HARRIS D foul drawn (1)			12 HANK H foul personal (1 - 2)
02:16	1 HARRIS D 2pt FG from turnover in the paint, jump shot made (2)	<b>18-10</b>	<b>8</b>	
01:56				15 GAINES K 2pt FG outside the paint, jump shot missed
01:55				offensive rebound (5)
01:41				15 GAINES K turnover bad pass (1)
01:41	4 HAYFORD E substitution out			



Official Basketball Play by Play - 1st Period

**Clemson at Pitt**

01/15/23 Petersen Events Center, Pittsburgh, PA  
Pitt vs. Clemson

**Game Time:** 2:00 PM  
**Game Duration:** 1:45  
**Attendance:** 953

**Officials:** Bryan Brunette, Fatou Cissoko-Stephens, Daryl Humphrey

Game Time	Pitt	Score	Diff	Clem
01:41	11 WASHENITZ M substitution in			
01:34				15 GAINES K substitution out
01:34				24 DOUGLAS A substitution out
01:34				2 BRADFORD D substitution in
01:34				22 WHITEHORN R substitution in
01:17	2 KING L 2pt FG from turnover outside the paint, jump shot blocked			
01:17				2 BRADFORD D block (1)
01:12				22 WHITEHORN R defensive rebound (1)
01:10				12 HANK H 2pt FG in the paint, jump shot missed
01:05	22 HUTCHERSON G defensive rebound (2)			
00:52	1 HARRIS D 3pt FG , jump shot missed			
00:49	21 JOHNSON M offensive rebound (1)			
00:43	22 HUTCHERSON G 2pt FG second chance outside the paint, turnaround jump shot missed			
00:38	1 HARRIS D offensive rebound (1)			
00:38	1 HARRIS D turnover lost ball (1)			2 BRADFORD D steal (2)
00:28				0 PERPIGNAN B turnover bad pass (1)
00:28	1 HARRIS D substitution out			
00:28	22 HUTCHERSON G substitution out			
00:28	5 BROWN A substitution in			
00:28	23 STRICKLAND A substitution in			
00:24	11 WASHENITZ M turnover lost ball (2)			0 PERPIGNAN B steal (1)
00:05	2 KING L steal (1)			2 BRADFORD D turnover lost ball (4)
<b>END OF PERIOD</b>				
<b>Pitt 18-10 Clem</b>				



**Clemson at Pitt**

01/15/23 Petersen Events Center, Pittsburgh, PA  
Pitt vs. Clemson

Game Time: 2:00 PM  
Game Duration: 1:45  
Attendance: 953

Officials: Bryan Brunette, Fatou Cissoko-Stephens, Daryl Humphrey

**Clemson - 10**

NO.	Name	F	Min	FG	3P	FT	Rebounds			Fouls		TP	AS	TO	ST	Blocks		+/-
				M-A	M-A	M-A	OR	DR	TOT	PF	FD					BS	BA	
5	Amari Robinson	F	08:28	4-5	0-0	0-0	0	0	0	0	0	8	0	0	2	1	0	-4
12	Hannah Hank	C	07:12	0-2	0-0	0-0	1	1	2	1	0	0	4	0	0	0	0	2
0	Brie Perpignan	G	08:28	1-2	0-1	0-0	0	0	0	1	0	2	0	1	1	0	0	-4
2	Daisha Bradford	G	06:45	0-0	0-0	0-0	1	0	1	0	0	0	0	4	2	1	0	-2
22	Ruby Whitehorn	G	06:45	0-1	0-0	0-0	0	1	1	0	0	0	0	1	1	0	0	-2
24	Ale'Jah Douglas		04:47	0-1	0-1	0-0	0	0	0	0	0	0	0	0	0	0	0	-10
30	Madi Ott		02:09	0-1	0-1	0-0	0	0	0	0	0	0	0	0	0	0	0	-4
21	Eno Inyang		02:48	0-0	0-0	0-0	0	0	0	0	0	0	0	1	0	0	0	-10
3	MaKayla Elmore		01:32	0-0	0-0	0-0	0	1	1	0	0	0	0	0	0	0	0	-4
15	Kionna Gaines		01:06	0-1	0-0	0-0	0	0	0	0	0	0	0	1	0	0	0	-2
Team							1	0	1			0		0				
<b>Totals</b>				5-13	0-3	0-0	3	3	6	2	0	10	4	8	6	2	0	-8

Shooting By Period		
1st FG%	5-13	38.5%
3PT%	0-3	0.0%
FT%	0-0	0%
GM FG%	5-13	38.5%
3PT%	0-3	0.0%
FT%	0-0	0.0%

Dead Ball Rebounds: 0, 0

Technical Fouls::NONE

**Pitt - 18**

NO.	Name	F	Min	FG	3P	FT	Rebounds			Fouls		TP	AS	TO	ST	Blocks		+/-
				M-A	M-A	M-A	OR	DR	TOT	PF	FD					BS	BA	
5	Amber Brown	F	07:48	2-3	0-0	0-0	0	0	0	0	0	4	1	0	2	0	0	6
21	Maliyah Johnson	F	08:44	0-1	0-1	0-0	1	0	1	0	0	0	0	1	0	0	0	2
23	Avery Strickland	F	06:16	1-1	0-0	0-0	0	0	0	0	0	2	0	1	0	0	0	2
2	Liatu King	G	07:12	1-3	0-0	0-0	0	2	2	0	0	2	0	1	1	0	2	-2
11	Marley Washenitz	G	05:20	1-1	0-0	0-0	0	0	0	0	0	2	1	2	0	0	0	-2
4	Emy Hayford		04:40	1-1	1-1	0-0	1	0	1	0	1	3	1	0	0	0	0	10
1	Dayshyanette Harris		05:00	1-2	0-1	0-0	1	0	1	0	1	2	0	1	0	0	0	12
22	Gabby Hutcherson		05:00	1-2	1-1	0-0	0	2	2	0	0	3	1	0	0	0	0	12
Team							0	1	1			0		0				
<b>Totals</b>				8-14	2-4	0-0	3	5	8	0	2	18	4	6	3	0	2	8

Shooting By Period		
1st FG%	8-14	57.1%
3PT%	2-4	50.0%
FT%	0-0	0%
GM FG%	8-14	57.1%
3PT%	2-4	50.0%
FT%	0-0	0.0%

Dead Ball Rebounds: 0, 0

Technical Fouls::NONE

	Clem	Pitt
Biggest lead	4 (1 <sup>st</sup> 5:39)	8 (1 <sup>st</sup> 2:16)
Best Scoring Run	6(1 <sup>st</sup> 5:39)	12(1 <sup>st</sup> 2:16)
Lead Changes	3	
Times Tied	3	
Time with Lead	02:21	05:17

Points from	Clem	Pitt
Turnovers	2	6
Paint	8	10
Second Chance	4	0
Fast Breaks	2	6
Bench	0	8

	Period by Period Scoring				
	1st	2nd	3rd	4th	TOT
Clem	10	14	24	24	72
Pitt	18	16	8	15	57



**Clemson at Pitt**

01/15/23 Petersen Events Center, Pittsburgh, PA  
Pitt vs. Clemson

**Game Time:** 2:00 PM  
**Game Duration:** 1:45  
**Attendance:** 953

**Officials:** Bryan Brunette, Fatou Cissoko-Stephens, Daryl Humphrey

**Period 2**

**Quarter Starters:**

<b>Pitt</b>	2 King L	5 Brown A	11 Washenitz M	21 Johnson M	23 Strickland A
<b>Clem</b>	0 Perpignan B	2 Bradford D	5 Robinson A	12 Hank H	22 Whitehorn R

Game Time	Pitt	Score	Diff	Clem
09:53				0 PERPIGNAN B turnover travel (2)
09:36	2 KING L 2pt FG from turnover in the paint, layup made (4)	<b>20-10</b>	<b>10</b>	
09:16	11 WASHENITZ M foul personal (1 - 1)			12 HANK H foul drawn (1)
09:07				5 ROBINSON A 2pt FG in the paint, layup missed
09:04	2 KING L defensive rebound (3)			
09:00	5 BROWN A turnover lost ball (1)			22 WHITEHORN R steal (2)
08:55		<b>20-12</b>	<b>8</b>	22 WHITEHORN R 2pt FG fast break from turnover in the paint, layup made (2)
08:27	21 JOHNSON M 2pt FG in the paint, layup made (2)	<b>22-12</b>	<b>10</b>	
08:27	5 BROWN A assist (2)			
08:10				22 WHITEHORN R turnover bad pass (2)
08:10				12 HANK H substitution out
08:10				21 INYANG E substitution in
07:45	11 WASHENITZ M 2pt FG from turnover outside the paint, hook shot missed			
07:40				0 PERPIGNAN B defensive rebound (1)
07:21				22 WHITEHORN R 2pt FG in the paint, layup missed
07:17				0 PERPIGNAN B offensive rebound (2)
07:17				0 PERPIGNAN B 2pt FG second chance in the paint, layup missed
07:17	2 KING L defensive rebound (4)			
07:17	2 KING L foul drawn (1)			22 WHITEHORN R foul personal (1 - 1)
07:16	11 WASHENITZ M substitution out			
07:16	4 HAYFORD E substitution in			
07:16				2 BRADFORD D substitution out
07:16				24 DOUGLAS A substitution in
07:08	2 KING L 2pt FG in the paint, layup missed			
07:04				21 INYANG E defensive rebound (1)
06:37				5 ROBINSON A 2pt FG in the paint, jump shot missed
06:35	2 KING L defensive rebound (5)			
06:35	2 KING L foul drawn (2)			21 INYANG E foul personal (1 - 2)
06:35				21 INYANG E substitution out
06:35				3 ELMORE M substitution in
06:13	5 BROWN A 2pt FG in the paint, jump shot made (6)	<b>24-12</b>	<b>12</b>	
06:13	21 JOHNSON M assist (1)			
05:54				0 PERPIGNAN B 3pt FG , jump shot missed
05:53	defensive rebound (12)			
05:53	23 STRICKLAND A substitution out			
05:53	1 HARRIS D substitution in			
05:44	4 HAYFORD E turnover bad pass (1)			22 WHITEHORN R steal (3)
05:39				22 WHITEHORN R 2pt FG from turnover in the paint, jump shot missed
05:34				0 PERPIGNAN B offensive rebound (3)
05:32		<b>24-14</b>	<b>10</b>	0 PERPIGNAN B 2pt FG from turnover second chance in the paint, layup made (4)



**Clemson at Pitt**

01/15/23 Petersen Events Center, Pittsburgh, PA  
Pitt vs. Clemson

**Game Time:** 2:00 PM  
**Game Duration:** 1:45  
**Attendance:** 953

**Officials:** Bryan Brunette, Fatou Cissoko-Stephens, Daryl Humphrey

Game Time	Pitt	Score	Diff	Clem
05:24	21 JOHNSON M 3pt FG fast break, jump shot made (5)	<b>27-14</b>	<b>13</b>	
05:24	1 HARRIS D assist (1)			
05:01				5 ROBINSON A 2pt FG in the paint, layup missed
04:59	4 HAYFORD E defensive rebound (2)			
04:32	21 JOHNSON M 3pt FG , jump shot missed			
04:29				0 PERPIGNAN B defensive rebound (4)
04:20				22 WHITEHORN R 2pt FG in the paint, jump shot missed
04:20	2 KING L defensive rebound (6)			
04:20	2 KING L foul drawn (3)			22 WHITEHORN R foul personal (2 - 3)
04:19	Timeout media			
04:19	2 KING L substitution out			
04:19	22 HUTCHERSON G substitution in			
04:19				5 ROBINSON A substitution out
04:19				22 WHITEHORN R substitution out
04:19				24 DOUGLAS A substitution out
04:19				2 BRADFORD D substitution in
04:19				12 HANK H substitution in
04:19				30 OTT M substitution in
04:01	4 HAYFORD E foul offensive (1 - 2)			0 PERPIGNAN B foul drawn (1)
04:01	4 HAYFORD E turnover offensive (2)			
03:51				12 HANK H turnover bad pass (1)
03:26	1 HARRIS D foul offensive (1 - 3)			12 HANK H foul drawn (2)
03:26	1 HARRIS D turnover offensive (2)			
03:07				30 OTT M 3pt FG from turnover, jump shot missed
03:04				12 HANK H offensive rebound (3)
03:03				12 HANK H 2pt FG from turnover second chance in the paint, layup blocked
03:03	22 HUTCHERSON G block (1)			
03:02				12 HANK H offensive rebound (4)
03:02	22 HUTCHERSON G foul personal (1 - 4)			12 HANK H foul drawn (3)
03:02		<b>27-15</b>	<b>12</b>	12 HANK H free throw 1 - 2 made (1)
03:02		<b>27-16</b>	<b>11</b>	12 HANK H free throw 2 - 2 made (2)
03:02	5 BROWN A substitution out			
03:02	2 KING L substitution in			
03:02				30 OTT M substitution out
03:02				24 DOUGLAS A substitution in
02:40	22 HUTCHERSON G 3pt FG , jump shot made (6)	<b>30-16</b>	<b>14</b>	
02:40				2 BRADFORD D 3pt FG , jump shot missed
02:40	2 KING L defensive rebound (7)			
02:17	4 HAYFORD E foul drawn (2)			2 BRADFORD D foul shooting (1 - 4)
02:17	4 HAYFORD E free throw 1 - 2 made (4)	<b>31-16</b>	<b>15</b>	
02:17	4 HAYFORD E free throw 2 - 2 made (5)	<b>32-16</b>	<b>16</b>	
02:17	1 HARRIS D substitution out			
02:17	23 STRICKLAND A substitution in			
02:17				2 BRADFORD D substitution out
02:17				3 ELMORE M substitution out
02:17				12 HANK H substitution out
02:17				5 ROBINSON A substitution in
02:17				15 GAINES K substitution in



**Clemson at Pitt**

**Officials:** Bryan Brunette, Fatou Cissoko-Stephens, Daryl Humphrey

Game Time	Pitt	Score	Diff	Clem
02:17				21 INYANG E substitution in
02:07	22 HUTCHERSON G foul shooting (2 - 5)			24 DOUGLAS A foul drawn (1)
02:07	22 HUTCHERSON G substitution out			
02:07	5 BROWN A substitution in			
02:07				24 DOUGLAS A free throw 1 - 2 missed
02:07				offensive dead ball rebound (1)
02:07		<b>32-17</b>	<b>15</b>	24 DOUGLAS A free throw 2 - 2 made (1)
01:50	2 KING L foul drawn (4)			21 INYANG E foul shooting (2 - 5)
01:50	2 KING L free throw 1 - 2 made (5)	<b>33-17</b>	<b>16</b>	
01:50	2 KING L free throw 2 - 2 made (6)	<b>34-17</b>	<b>17</b>	
01:28		<b>34-20</b>	<b>14</b>	24 DOUGLAS A 3pt FG , jump shot made (4)
01:07	21 JOHNSON M 3pt FG , jump shot missed			
01:02				21 INYANG E defensive rebound (2)
00:57				21 INYANG E 2pt FG outside the paint, jump shot blocked
00:57	2 KING L block (1)			
00:51	4 HAYFORD E defensive rebound (3)			
00:49	23 STRICKLAND A 3pt FG , jump shot missed			
00:47	offensive rebound (17)			
00:47	21 JOHNSON M substitution out			
00:47	11 WASHENITZ M substitution in			
00:47				21 INYANG E substitution out
00:47				12 HANK H substitution in
00:47	2 KING L substitution out			
00:47	3 EXANOR T substitution in			
00:42	11 WASHENITZ M turnover bad pass (3)			
00:26		<b>34-22</b>	<b>12</b>	12 HANK H 2pt FG from turnover in the paint, layup made (4)
00:26				5 ROBINSON A assist (1)
00:20	5 BROWN A foul drawn (1)			24 DOUGLAS A foul personal (1 - 6)
00:20	5 BROWN A free throw fast break 1 - 2 missed			
00:20	offensive dead ball rebound (1)			
00:20	5 BROWN A free throw fast break 2 - 2 missed			
00:18				0 PERPIGNAN B defensive rebound (5)
00:04				12 HANK H 3pt FG , jump shot missed
00:03				5 ROBINSON A offensive rebound (1)
00:03	4 HAYFORD E foul personal (2 - 6)			5 ROBINSON A foul drawn (1)
00:03		<b>34-23</b>	<b>11</b>	5 ROBINSON A free throw 1 - 2 made (9)
00:03		<b>34-24</b>	<b>10</b>	5 ROBINSON A free throw 2 - 2 made (10)
<b>END OF PERIOD</b>				
<b>Pitt 34-24 Clem</b>				





**Clemson at Pitt**

01/15/23 Petersen Events Center, Pittsburgh, PA  
Pitt vs. Clemson

Game Time: 2:00 PM  
Game Duration: 1:45  
Attendance: 953

Officials: Bryan Brunette, Fatou Cissoko-Stephens, Daryl Humphrey

**Clemson - 14**

NO.	Name	F/C	Min	FG			Rebounds			Fouls		TP	AS	TO	ST	Blocks		+/-
				M-A	M-A	M-A	OR	DR	TOT	PF	FD					BS	BA	
5	Amari Robinson	F	07:58	0-3	0-0	2-2	1	0	1	0	1	2	1	0	0	0	0	1
12	Hannah Hank	C	04:39	1-3	0-1	2-2	2	0	2	0	3	4	0	1	0	0	1	-1
0	Brie Perpignan	G	10:00	1-3	0-1	0-0	2	3	5	0	1	2	0	1	0	0	0	-2
2	Daisha Bradford	G	04:46	0-1	0-1	0-0	0	0	0	1	0	0	0	0	0	0	0	-5
22	Ruby Whitehorn	G	05:41	1-4	0-0	0-0	0	0	0	2	0	2	0	1	2	0	0	-5
21	Eno Inyang		03:05	0-1	0-0	0-0	0	2	2	2	0	0	0	0	0	0	1	2
24	Ale'Jah Douglas		05:59	1-1	1-1	1-2	0	0	0	1	1	4	0	0	0	0	0	-2
3	MaKayla Elmore		04:18	0-0	0-0	0-0	0	0	0	0	0	0	0	0	0	0	0	-6
30	Madi Ott		01:17	0-1	0-1	0-0	0	0	0	0	0	0	0	0	0	0	0	2
15	Kionna Gaines		02:17	0-0	0-0	0-0	0	0	0	0	0	0	0	0	0	0	0	6
Team							0	0	0			0						
<b>Totals</b>				4-17	1-5	5-6	5	5	10	6	6	14	1	3	2	0	2	-2

Shooting By Period		
2 <sup>nd</sup> FG%	4-17	23.5%
3PT%	1-5	20.0%
FT%	5-6	83.3%
GM FG%	4-17	23.5%
3PT%	1-5	20.0%
FT%	5-6	83.3%

Dead Ball Rebounds: 1, 0

Technical Fouls::NONE

**Pitt - 16**

NO.	Name	F/C	Min	FG			Rebounds			Fouls		TP	AS	TO	ST	Blocks		+/-
				M-A	M-A	M-A	OR	DR	TOT	PF	FD					BS	BA	
5	Amber Brown	F	09:05	1-1	0-0	0-2	0	0	0	0	1	2	1	1	0	0	0	-3
21	Maliyah Johnson	F	09:13	2-4	1-3	0-0	0	0	0	0	0	5	1	0	0	0	0	6
23	Avery Strickland	F	06:24	0-1	0-1	0-0	0	0	0	0	0	0	0	0	0	0	0	-2
2	Liatu King	G	07:56	1-2	0-0	2-2	0	5	5	0	4	4	0	0	0	1	0	8
11	Marley Washenitz	G	03:31	0-1	0-0	0-0	0	0	0	1	0	0	0	1	0	0	0	-2
4	Emy Hayford		07:16	0-0	0-0	2-2	0	2	2	2	1	2	0	2	0	0	0	0
1	Dayshyanette Harris		03:36	0-0	0-0	0-0	0	0	0	1	0	0	1	1	0	0	0	4
22	Gabby Hutcherson		02:12	1-1	1-1	0-0	0	0	0	2	0	3	0	0	0	1	0	3
3	Taisha Exanor		00:47	0-0	0-0	0-0	0	0	0	0	0	0	0	0	0	0	0	-4
Team							1	1	2			0						
<b>Totals</b>				5-10	2-5	4-6	1	8	9	6	6	16	3	5	0	2	0	2

Shooting By Period		
2 <sup>nd</sup> FG%	5-10	50.0%
3PT%	2-5	40.0%
FT%	4-6	66.7%
GM FG%	5-10	50.0%
3PT%	2-5	40.0%
FT%	4-6	66.7%

Dead Ball Rebounds: 1, 0

Technical Fouls::NONE

	Clem	Pitt
Biggest lead	0 (1 <sup>st</sup> 10:00)	17 (2 <sup>nd</sup> 1:50)
Best Scoring Run	7(2 <sup>nd</sup> 0:03)	5(2 <sup>nd</sup> 2:17)
Lead Changes	0	
Times Tied	0	
Time with Lead	00:00	09:36

Points from	Clem	Pitt
Turnovers	8	2
Paint	6	6
Second Chance	6	0
Fast Breaks	2	3
Bench	4	5

	Period by Period Scoring				
	1st	2nd	3rd	4th	TOT
Clem	10	14	24	24	72
Pitt	18	16	8	15	57



Officials: Bryan Brunette, Fatou Cissoko-Stephens, Daryl Humphrey

Clemson - 24

NO.	Name	F	Min	FG			Rebounds			Fouls		TP	AS	TO	ST	Blocks		+/-
				M-A	M-A	M-A	OR	DR	TOT	PF	FD					BS	BA	
5	Amari Robinson	F	16:26	4-8	0-0	2-2	1	0	1	0	1	10	1	0	2	1	0	-3
12	Hannah Hank	C	11:51	1-5	0-1	2-2	3	1	4	1	3	4	4	1	0	0	1	1
0	Brie Perpignan	G	18:28	2-5	0-2	0-0	2	3	5	1	1	4	0	2	1	0	0	-6
2	Daisha Bradford	G	11:31	0-1	0-1	0-0	1	0	1	1	0	0	0	4	2	1	0	-7
22	Ruby Whitehorn	G	12:26	1-5	0-0	0-0	0	1	1	2	0	2	0	2	3	0	0	-7
24	Ale'Jah Douglas		10:46	1-2	1-2	1-2	0	0	0	1	1	4	0	0	0	0	0	-12
30	Madi Ott		03:26	0-2	0-2	0-0	0	0	0	0	0	0	0	0	0	0	0	-2
21	Eno Inyang		05:53	0-1	0-0	0-0	0	2	2	2	0	0	0	1	0	0	1	-8
3	MaKayla Elmore		05:50	0-0	0-0	0-0	0	1	1	0	0	0	0	0	0	0	0	-10
15	Kionna Gaines		03:23	0-1	0-0	0-0	0	0	0	0	0	0	0	1	0	0	0	4
Team							1	0	1			0		0				
<b>Totals</b>				9-30	1-8	5-6	8	8	16	8	6	24	5	11	8	2	2	-10

Shooting By Period		
1 <sup>st</sup> FG%	5-13	38.5%
3PT%	0-3	0.0%
FT%	0-0	0%
2 <sup>nd</sup> FG%	4-17	23.5%
3PT%	1-5	20.0%
FT%	5-6	83.3%
GM FG%	9-30	30.0%
3PT%	1-8	12.5%
FT%	5-6	83.3%

Dead Ball Rebounds: 1, 0

Technical Fouls::NONE

Pitt - 34

NO.	Name	F	Min	FG			Rebounds			Fouls		TP	AS	TO	ST	Blocks		+/-
				M-A	M-A	M-A	OR	DR	TOT	PF	FD					BS	BA	
5	Amber Brown	F	16:53	3-4	0-0	0-2	0	0	0	0	1	6	2	1	2	0	0	3
21	Maliyah Johnson	F	17:57	2-5	1-4	0-0	1	0	1	0	0	5	1	1	0	0	0	8
23	Avery Strickland	F	12:40	1-2	0-1	0-0	0	0	0	0	0	2	0	1	0	0	0	0
2	Liatu King	G	15:08	2-5	0-0	2-2	0	7	7	0	4	6	0	1	1	1	2	6
11	Marley Washenitz	G	08:51	1-2	0-0	0-0	0	0	0	1	0	2	1	3	0	0	0	-4
4	Emy Hayford		11:56	1-1	1-1	2-2	1	2	3	2	2	5	1	2	0	0	0	10
1	Dayshyanette Harris		08:36	1-2	0-1	0-0	1	0	1	1	1	2	1	2	0	0	0	16
22	Gabby Hutcherson		07:12	2-3	2-2	0-0	0	2	2	2	0	6	1	0	0	1	0	15
3	Taisha Exanor		00:47	0-0	0-0	0-0	0	0	0	0	0	0	0	0	0	0	0	-4
Team							1	2	3			0		0				
<b>Totals</b>				13-24	4-9	4-6	4	13	17	6	8	34	7	11	3	2	2	10

Shooting By Period		
1 <sup>st</sup> FG%	8-14	57.1%
3PT%	2-4	50.0%
FT%	0-0	0%
2 <sup>nd</sup> FG%	5-10	50.0%
3PT%	2-5	40.0%
FT%	4-6	66.7%
GM FG%	13-24	54.2%
3PT%	4-9	44.4%
FT%	4-6	66.7%

Dead Ball Rebounds: 1, 0

Technical Fouls::NONE

	Clem	Pitt
Biggest lead	4 (1 <sup>st</sup> 5:39)	17 (2 <sup>nd</sup> 1:50)
Best Scoring Run	7(2 <sup>nd</sup> 0:03)	14(2 <sup>nd</sup> 9:36)
Lead Changes	3	
Times Tied	3	
Time with Lead	02:21	15:17

Points from	Clem	Pitt
Turnovers	10	8
Paint	14	16
Second Chance	10	0
Fast Breaks	4	9
Bench	4	13

	Period by Period Scoring				
	1st	2nd	3rd	4th	TOT
Clem	10	14	24	24	72
Pitt	18	16	8	15	57



**Clemson at Pitt**

01/15/23 Petersen Events Center, Pittsburgh, PA  
Pitt vs. Clemson

**Game Time:** 2:00 PM  
**Game Duration:** 1:45  
**Attendance:** 953

**Officials:** Bryan Brunette, Fatou Cissoko-Stephens, Daryl Humphrey

**Period 3**

**Quarter Starters:**

<b>Pitt</b>	2 King L	5 Brown A	11 Washenitz M	21 Johnson M	23 Strickland A
<b>Clem</b>	0 Perpignan B	2 Bradford D	5 Robinson A	12 Hank H	22 Whitehorn R

Game Time	Pitt	Score	Diff	Clem
10:00	3 EXANOR T substitution out			
10:00	4 HAYFORD E substitution out			
10:00	2 KING L substitution in			
10:00	21 JOHNSON M substitution in			
10:00				15 GAINES K substitution out
10:00				24 DOUGLAS A substitution out
10:00				2 BRADFORD D substitution in
10:00				22 WHITEHORN R substitution in
09:41	23 STRICKLAND A 3pt FG , jump shot missed			
09:37	23 STRICKLAND A offensive rebound (1)			
09:21	23 STRICKLAND A 2pt FG second chance outside the paint, jump shot missed			
09:17				5 ROBINSON A defensive rebound (2)
08:59		<b>34-26</b>	<b>8</b>	5 ROBINSON A 2pt FG in the paint, layup made (12)
08:59				2 BRADFORD D assist (1)
08:40	5 BROWN A 2pt FG in the paint, jump shot blocked			
08:40				12 HANK H block (1)
08:36				12 HANK H defensive rebound (5)
08:27		<b>34-28</b>	<b>6</b>	12 HANK H 2pt FG in the paint, layup made (6)
08:27				2 BRADFORD D assist (2)
08:00	5 BROWN A 2pt FG outside the paint, jump shot missed			
07:58	2 KING L offensive rebound (8)			
07:58	2 KING L 2pt FG second chance in the paint, layup missed			
07:58	2 KING L offensive rebound (9)			
07:58	2 KING L foul drawn (5)			22 WHITEHORN R foul shooting (3 - 1)
07:58	2 KING L free throw 1 - 2 made (7)	<b>35-28</b>	<b>7</b>	
07:58	2 KING L free throw 2 - 2 made (8)	<b>36-28</b>	<b>8</b>	
07:58	5 BROWN A substitution out			
07:58	11 WASHENITZ M substitution out			
07:58	4 HAYFORD E substitution in			
07:58	22 HUTCHERSON G substitution in			
07:58				2 BRADFORD D substitution out
07:58				24 DOUGLAS A substitution in
07:40				24 DOUGLAS A turnover lost ball (1)
07:40				22 WHITEHORN R substitution out
07:40				30 OTT M substitution in
07:31	22 HUTCHERSON G turnover bad pass (1)			
07:06		<b>36-30</b>	<b>6</b>	5 ROBINSON A 2pt FG from turnover in the paint, layup made (14)
07:06				30 OTT M assist (1)
06:50	23 STRICKLAND A 3pt FG , jump shot missed			
06:45				24 DOUGLAS A defensive rebound (1)
06:33	2 KING L foul shooting (1 - 1)			0 PERPIGNAN B foul drawn (2)
06:33	23 STRICKLAND A substitution out			



**Clemson at Pitt**

01/15/23 Petersen Events Center, Pittsburgh, PA  
Pitt vs. Clemson

**Game Time:** 2:00 PM  
**Game Duration:** 1:45  
**Attendance:** 953

**Officials:** Bryan Brunette, Fatou Cissoko-Stephens, Daryl Humphrey

Game Time	Pitt	Score	Diff	Clem
06:33	12 MALCOLM A substitution in			
06:33		<b>36-31</b>	<b>5</b>	0 PERPIGNAN B free throw 1 - 2 made (5)
06:33		<b>36-32</b>	<b>4</b>	0 PERPIGNAN B free throw 2 - 2 made (6)
06:33				0 PERPIGNAN B substitution out
06:33				2 BRADFORD D substitution in
06:21	2 KING L 2pt FG in the paint, jump shot missed			
06:18				12 HANK H defensive rebound (6)
06:10		<b>36-35</b>	<b>1</b>	30 OTT M 3pt FG , jump shot made (3)
06:10				12 HANK H assist (5)
06:05	Timeout 30 Sec			
06:05	2 KING L substitution out			
06:05	5 BROWN A substitution in			
06:05				12 HANK H substitution out
06:05				21 INYANG E substitution in
06:00	12 MALCOLM A turnover bad pass (1)			2 BRADFORD D steal (3)
05:54				2 BRADFORD D 2pt FG from turnover in the paint, layup missed
05:48	5 BROWN A defensive rebound (1)			
05:39	5 BROWN A 2pt FG in the paint, layup made (8)	<b>38-35</b>	<b>3</b>	
05:39	22 HUTCHERSON G assist (2)			
05:25		<b>38-37</b>	<b>1</b>	21 INYANG E 2pt FG in the paint, layup made (2)
05:25				2 BRADFORD D assist (3)
05:15	5 BROWN A turnover bad pass (2)			
05:04		<b>38-39</b>	<b>-1</b>	21 INYANG E 2pt FG from turnover outside the paint, jump shot made (4)
05:04				24 DOUGLAS A assist (1)
04:52	5 BROWN A turnover lost ball (3)			30 OTT M steal (1)
04:38		<b>38-41</b>	<b>-3</b>	30 OTT M 2pt FG from turnover outside the paint, jump shot made (5)
04:20	21 JOHNSON M 3pt FG , jump shot missed			
04:16				5 ROBINSON A defensive rebound (3)
04:06				21 INYANG E 2pt FG outside the paint, jump shot missed
04:02	22 HUTCHERSON G defensive rebound (3)			
03:42	5 BROWN A 2pt FG in the paint, layup made (10)	<b>40-41</b>	<b>-1</b>	
03:42	4 HAYFORD E assist (2)			
03:27	21 JOHNSON M steal (1)			5 ROBINSON A turnover bad pass (1)
03:27	21 JOHNSON M turnover out of bounds (2)			
03:27	Timeout media			
03:27	12 MALCOLM A substitution out			
03:27	21 JOHNSON M substitution out			
03:27	1 HARRIS D substitution in			
03:27	23 STRICKLAND A substitution in			
03:27				5 ROBINSON A substitution out
03:27				24 DOUGLAS A substitution out
03:27				0 PERPIGNAN B substitution in
03:27				12 HANK H substitution in
03:14				30 OTT M 3pt FG from turnover, jump shot missed
03:09	22 HUTCHERSON G defensive rebound (4)			
02:54				30 OTT M substitution out
02:54				22 WHITEHORN R substitution in
02:48	4 HAYFORD E foul offensive (3 - 2)			2 BRADFORD D foul drawn (1)



Official Basketball Play by Play - 3rd Period

**Clemson at Pitt**

01/15/23 Petersen Events Center, Pittsburgh, PA  
Pitt vs. Clemson

Game Time: 2:00 PM

Game Duration: 1:45

Attendance: 953

Officials: Bryan Brunette, Fatou Cissoko-Stephens, Daryl Humphrey

Game Time	Pitt	Score	Diff	Clem
02:48	4 HAYFORD E turnover offensive (3)			
02:40		<b>40-43</b>	<b>-3</b>	21 INYANG E 2pt FG from turnover in the paint, layup made (6)
02:40				12 HANK H assist (6)
02:08	1 HARRIS D 3pt FG , jump shot missed			
02:07				defensive rebound (22)
02:07	4 HAYFORD E substitution out			
02:07	22 HUTCHERSON G substitution out			
02:07	2 KING L substitution in			
02:07	11 WASHENITZ M substitution in			
01:46		<b>40-46</b>	<b>-6</b>	2 BRADFORD D 3pt FG , jump shot made (3)
01:46				22 WHITEHORN R assist (1)
01:35	23 STRICKLAND A 3pt FG , jump shot missed			
01:32	2 KING L offensive rebound (10)			
01:27	2 KING L 2pt FG second chance in the paint, layup made (10)	<b>42-46</b>	<b>-4</b>	
01:27	5 BROWN A assist (3)			
01:27	2 KING L foul drawn (6)			21 INYANG E foul shooting (3 - 2)
01:27				21 INYANG E substitution out
01:27				5 ROBINSON A substitution in
01:27	2 KING L free throw 1 - 1 missed			
01:23				12 HANK H defensive rebound (7)
01:20	jump ball situation			
01:05				0 PERPIGNAN B 2pt FG in the paint, driving layup missed
01:00	1 HARRIS D defensive rebound (2)			
00:57	23 STRICKLAND A 3pt FG , jump shot missed			
00:52	1 HARRIS D offensive rebound (3)			
00:35	1 HARRIS D foul offensive (2 - 3)			12 HANK H foul drawn (4)
00:35	1 HARRIS D turnover offensive (3)			
00:35	1 HARRIS D substitution out			
00:35	21 JOHNSON M substitution in			
00:35				12 HANK H substitution out
00:35				3 ELMORE M substitution in
00:05		<b>42-48</b>	<b>-6</b>	22 WHITEHORN R 2pt FG from turnover in the paint, jump shot made (4)
<b>END OF PERIOD</b>				
<b>Pitt 42-48 Clem</b>				



**Clemson at Pitt**

01/15/23 Petersen Events Center, Pittsburgh, PA  
Pitt vs. Clemson

Game Time: 2:00 PM  
Game Duration: 1:45  
Attendance: 953

Officials: Bryan Brunette, Fatou Cissoko-Stephens, Daryl Humphrey

**Clemson - 24**

NO.	Name	F/C	Min	FG			Rebounds			Fouls		TP	AS	TO	ST	Blocks		+/-
				M-A	M-A	M-A	OR	DR	TOT	PF	FD					BS	BA	
5	Amari Robinson	F	08:00	2-2	0-0	0-0	0	2	2	0	0	4	0	1	0	0	0	13
12	Hannah Hank	C	06:47	1-1	0-0	0-0	0	3	3	0	1	2	2	0	0	1	0	12
0	Brie Perpignan	G	06:54	0-1	0-0	2-2	0	0	0	0	1	2	0	0	0	0	0	11
2	Daisha Bradford	G	08:35	1-2	1-1	0-0	0	0	0	0	1	3	3	0	1	0	0	12
22	Ruby Whitehorn	G	05:14	1-1	0-0	0-0	0	0	0	1	0	2	1	0	0	0	0	7
15	Kionna Gaines		00:00	0-0	0-0	0-0	0	0	0	0	0	0	0	0	0	0	0	0
24	Ale'Jah Douglas		04:31	0-0	0-0	0-0	0	1	1	0	0	0	1	1	0	0	0	9
30	Madi Ott		04:46	2-3	1-2	0-0	0	0	0	0	0	5	1	0	1	0	0	9
21	Eno Inyang		04:38	3-4	0-0	0-0	0	0	0	1	0	6	0	0	0	0	0	5
3	MaKayla Elmore		00:35	0-0	0-0	0-0	0	0	0	0	0	0	0	0	0	0	0	2
Team							0	1	1			0						
<b>Totals</b>				10-14	2-3	2-2	0	7	7	2	3	24	8	2	2	1	0	16

Shooting By Period		
3 <sup>rd</sup> FG%	10-14	71.4%
3PT%	2-3	66.7%
FT%	2-2	100%
GM FG%	10-14	71.4%
3PT%	2-3	66.7%
FT%	2-2	100.0%

Dead Ball Rebounds: 0, 0

Technical Fouls::NONE

**Pitt - 8**

NO.	Name	F/C	Min	FG			Rebounds			Fouls		TP	AS	TO	ST	Blocks		+/-
				M-A	M-A	M-A	OR	DR	TOT	PF	FD					BS	BA	
5	Amber Brown	F	08:07	2-4	0-0	0-0	0	1	1	0	0	4	1	2	0	0	1	-9
21	Maliyah Johnson	F	07:08	0-1	0-1	0-0	0	0	0	0	0	0	0	1	1	0	0	-13
23	Avery Strickland	F	06:54	0-5	0-4	0-0	1	0	1	0	0	0	0	0	0	0	0	-9
2	Liatu King	G	06:02	1-3	0-0	2-3	3	0	3	1	2	4	0	0	0	0	0	-12
11	Marley Washenitz	G	04:09	0-0	0-0	0-0	0	0	0	0	0	0	0	0	0	0	0	-5
3	Taisha Exanor		00:00	0-0	0-0	0-0	0	0	0	0	0	0	0	0	0	0	0	0
4	Emy Hayford		05:51	0-0	0-0	0-0	0	0	0	1	0	0	1	1	0	0	0	-11
22	Gabby Hutcherson		05:51	0-0	0-0	0-0	0	2	2	0	0	0	1	1	0	0	0	-11
12	Aislin Malcolm		03:06	0-0	0-0	0-0	0	0	0	0	0	0	0	1	0	0	0	-7
1	Dayshyanette Harris		02:52	0-1	0-1	0-0	1	1	2	1	0	0	0	1	0	0	0	-3
Team							0	0	0			0						
<b>Totals</b>				3-14	0-6	2-3	5	4	9	3	2	8	3	7	1	0	1	-16

Shooting By Period		
3 <sup>rd</sup> FG%	3-14	21.4%
3PT%	0-6	0.0%
FT%	2-3	66.7%
GM FG%	3-14	21.4%
3PT%	0-6	0.0%
FT%	2-3	66.7%

Dead Ball Rebounds: 0, 0

Technical Fouls::NONE

	Clem	Pitt
Biggest lead	6 (3 <sup>rd</sup> 1:46)	10 (3 <sup>rd</sup> 9:41)
Best Scoring Run	7(3 <sup>rd</sup> 6:10)	2(3 <sup>rd</sup> 7:58)
Lead Changes	1	
Times Tied	0	
Time with Lead	05:04	04:37

	Clem	Pitt
Points from		
Turnovers	10	0
Paint	12	6
Second Chance	0	4
Fast Breaks	0	0
Bench	11	0

	Period by Period Scoring				
	1st	2nd	3rd	4th	TOT
Clem	10	14	24	24	72
Pitt	18	16	8	15	57



**Clemson at Pitt**

01/15/23 Petersen Events Center, Pittsburgh, PA  
Pitt vs. Clemson

**Game Time:** 2:00 PM  
**Game Duration:** 1:45  
**Attendance:** 953

**Officials:** Bryan Brunette, Fatou Cissoko-Stephens, Daryl Humphrey

**Period 4**

**Quarter Starters:**

<b>Pitt</b>	2 King L	5 Brown A	11 Washenitz M	21 Johnson M	23 Strickland A
<b>Clem</b>	2 Bradford D	3 Elmore M	5 Robinson A	22 Whitehorn R	24 Douglas A

Game Time	Pitt	Score	Diff	Clem
10:00				0 PERPIGNAN B substitution out
10:00				24 DOUGLAS A substitution in
09:43	21 JOHNSON M 2pt FG in the paint, jump shot missed			
09:40				5 ROBINSON A defensive rebound (4)
09:13				22 WHITEHORN R 2pt FG in the paint, jump shot missed
09:09	2 KING L defensive rebound (11)			
09:03	21 JOHNSON M 2pt FG in the paint, driving layup made (7)	<b>44-48</b>	<b>-4</b>	
08:44	11 WASHENITZ M foul personal (2 - 1)			5 ROBINSON A foul drawn (2)
08:44				3 ELMORE M substitution out
08:44				12 HANK H substitution in
08:38		<b>44-50</b>	<b>-6</b>	2 BRADFORD D 2pt FG in the paint, jump shot made (5)
08:38				24 DOUGLAS A assist (2)
08:30	21 JOHNSON M 3pt FG fast break, jump shot made (10)	<b>47-50</b>	<b>-3</b>	
08:30	11 WASHENITZ M assist (2)			
08:23				2 BRADFORD D 2pt FG in the paint, layup blocked
08:23	2 KING L block (2)			
08:23				offensive rebound (25)
08:20		<b>47-52</b>	<b>-5</b>	22 WHITEHORN R 2pt FG second chance outside the paint, jump shot made (6)
08:20				5 ROBINSON A assist (2)
08:08	2 KING L turnover bad pass (2)			
08:08	11 WASHENITZ M substitution out			
08:08	4 HAYFORD E substitution in			
08:08				2 BRADFORD D substitution out
08:08				0 PERPIGNAN B substitution in
07:56				12 HANK H 2pt FG from turnover outside the paint, jump shot missed
07:53	2 KING L defensive rebound (12)			
07:28	21 JOHNSON M 3pt FG , jump shot missed			
07:25				12 HANK H defensive rebound (8)
07:06		<b>47-54</b>	<b>-7</b>	5 ROBINSON A 2pt FG in the paint, layup made (16)
07:06				12 HANK H assist (7)
06:34	21 JOHNSON M 3pt FG , jump shot made (13)	<b>50-54</b>	<b>-4</b>	
06:34	2 KING L assist (1)			
06:22		<b>50-56</b>	<b>-6</b>	12 HANK H 2pt FG outside the paint, jump shot made (8)
06:22				24 DOUGLAS A assist (3)
06:12	4 HAYFORD E foul drawn (3)			24 DOUGLAS A foul personal (2 - 1)
06:12	2 KING L substitution out			
06:12	23 STRICKLAND A substitution out			
06:12	1 HARRIS D substitution in			
06:12	22 HUTCHERSON G substitution in			
06:12				24 DOUGLAS A substitution out
06:12				2 BRADFORD D substitution in
06:06	21 JOHNSON M foul drawn (1)			5 ROBINSON A foul personal (1 - 2)



**Clemson at Pitt**

01/15/23 Petersen Events Center, Pittsburgh, PA  
Pitt vs. Clemson

**Game Time:** 2:00 PM  
**Game Duration:** 1:45  
**Attendance:** 953

**Officials:** Bryan Brunette, Fatou Cissoko-Stephens, Daryl Humphrey

Game Time	Pitt	Score	Diff	Clem
06:06				22 WHITEHORN R substitution out
06:06				30 OTT M substitution in
05:57	21 JOHNSON M 3pt FG , jump shot missed			
05:54				12 HANK H defensive rebound (9)
05:45		<b>50-59</b>	<b>-9</b>	2 BRADFORD D 3pt FG , jump shot made (8)
05:45				0 PERPIGNAN B assist (1)
05:29	1 HARRIS D 2pt FG outside the paint, jump shot missed			
05:29	offensive rebound (29)			
05:29				5 ROBINSON A substitution out
05:29				21 INYANG E substitution in
05:22	21 JOHNSON M turnover lost ball (3)			12 HANK H steal (1)
05:07		<b>50-61</b>	<b>-11</b>	21 INYANG E 2pt FG from turnover in the paint, turnaround jump shot made (8)
05:07				12 HANK H assist (8)
04:56	1 HARRIS D turnover lost ball (4)			30 OTT M steal (2)
04:40	22 HUTCHERSON G foul shooting (3 - 2)			21 INYANG E foul drawn (1)
04:40	Timeout media			
04:40	22 HUTCHERSON G substitution out			
04:40	2 KING L substitution in			
04:40				12 HANK H substitution out
04:40				5 ROBINSON A substitution in
04:40		<b>50-62</b>	<b>-12</b>	21 INYANG E free throw 1 - 2 made (9)
04:40		<b>50-63</b>	<b>-13</b>	21 INYANG E free throw 2 - 2 made (10)
04:21	21 JOHNSON M 2pt FG in the paint, layup made (15)	<b>52-63</b>	<b>-11</b>	
04:13		<b>52-65</b>	<b>-13</b>	21 INYANG E 2pt FG fast break in the paint, layup made (12)
04:13				2 BRADFORD D assist (4)
04:08	5 BROWN A foul drawn (2)			0 PERPIGNAN B foul personal (2 - 3)
03:49	2 KING L 2pt FG in the paint, jump shot missed			
03:49				30 OTT M defensive rebound (1)
03:49	5 BROWN A foul personal (1 - 3)			30 OTT M foul drawn (1)
03:49				2 BRADFORD D substitution out
03:49				30 OTT M substitution out
03:49				22 WHITEHORN R substitution in
03:49				24 DOUGLAS A substitution in
03:33				21 INYANG E 2pt FG in the paint, layup missed
03:29	2 KING L defensive rebound (13)			
03:26	1 HARRIS D 2pt FG fast break in the paint, layup made (4)	<b>54-65</b>	<b>-11</b>	
03:26	2 KING L assist (2)			
03:07				21 INYANG E substitution out
03:07				12 HANK H substitution in
03:04		<b>54-67</b>	<b>-13</b>	5 ROBINSON A 2pt FG outside the paint, jump shot made (18)
03:04				0 PERPIGNAN B assist (2)
02:53	2 KING L 2pt FG outside the paint, jump shot missed			
02:50				12 HANK H defensive rebound (10)
02:40				Timeout 30 Sec
02:40	2 KING L substitution out			
02:40	4 HAYFORD E substitution out			
02:40	11 WASHENITZ M substitution in			
02:40	22 HUTCHERSON G substitution in			





Official Basketball Play by Play - 4th Period

**Clemson at Pitt**

01/15/23 Petersen Events Center, Pittsburgh, PA  
Pitt vs. Clemson

**Game Time:** 2:00 PM

**Game Duration:** 1:45

**Attendance:** 953

**Officials:** Bryan Brunette, Fatou Cissoko-Stephens, Daryl Humphrey

Game Time	Pitt	Score	Diff	Clem
02:29	11 WASHENITZ M steal (1)			24 DOUGLAS A turnover bad pass (2)
02:22	11 WASHENITZ M 2pt FG from turnover in the paint, layup missed			
02:19				12 HANK H defensive rebound (11)
02:08		<b>54-70</b>	<b>-16</b>	0 PERPIGNAN B 3pt FG , jump shot made (9)
02:08				5 ROBINSON A assist (3)
01:54	11 WASHENITZ M 2pt FG in the paint, jump shot made (4)	<b>56-70</b>	<b>-14</b>	
01:54	11 WASHENITZ M foul drawn (1)			5 ROBINSON A foul shooting (2 - 4)
01:54	1 HARRIS D substitution out			
01:54	23 STRICKLAND A substitution in			
01:54	11 WASHENITZ M free throw 1 - 1 made (5)	<b>57-70</b>	<b>-13</b>	
01:42		<b>57-72</b>	<b>-15</b>	22 WHITEHORN R 2pt FG in the paint, layup made (8)
01:42				24 DOUGLAS A assist (4)
01:31	22 HUTCHERSON G 3pt FG , jump shot missed			
01:31				defensive rebound (31)
01:16				24 DOUGLAS A 3pt FG , jump shot missed
01:12	22 HUTCHERSON G defensive rebound (5)			
01:06	5 BROWN A 2pt FG in the paint, jump shot missed			
01:03				12 HANK H defensive rebound (12)
00:35				0 PERPIGNAN B 3pt FG , jump shot missed
00:31				5 ROBINSON A offensive rebound (5)
00:11				12 HANK H 3pt FG second chance, jump shot missed
00:08	21 JOHNSON M defensive rebound (2)			
00:02	11 WASHENITZ M 2pt FG outside the paint, jump shot missed			
00:01				5 ROBINSON A defensive rebound (6)
<b>END OF GAME</b>				
<b>Pitt 57-72 Clem</b>				



**Clemson at Pitt**

01/15/23 Petersen Events Center, Pittsburgh, PA  
Pitt vs. Clemson

Game Time: 2:00 PM  
Game Duration: 1:45  
Attendance: 953

Officials: Bryan Brunette, Fatou Cissoko-Stephens, Daryl Humphrey

**Clemson - 24**

NO.	Name	F/C	Min	FG			Rebounds			Fouls		TP	AS	TO	ST	Blocks		+/-
				M-A	M-A	M-A	OR	DR	TOT	PF	FD					BS	BA	
5	Amari Robinson	F	09:11	2-2	0-0	0-0	1	2	3	2	1	4	2	0	0	0	0	7
12	Hannah Hank	C	07:11	1-3	0-1	0-0	0	5	5	0	0	2	2	0	1	0	0	11
0	Brie Perpignan	G	08:08	1-2	1-2	0-0	0	0	0	1	0	3	2	0	0	0	0	10
2	Daisha Bradford	G	04:15	2-3	1-1	0-0	0	0	0	0	0	5	1	0	0	0	1	6
22	Ruby Whitehorn	G	07:43	2-3	0-0	0-0	0	0	0	0	0	4	0	0	0	0	0	2
3	MaKayla Elmore		01:16	0-0	0-0	0-0	0	0	0	0	0	0	0	0	0	0	0	-2
24	Ale'Jah Douglas		07:37	0-1	0-1	0-0	0	0	0	1	0	0	3	1	0	0	0	2
30	Madi Ott		02:17	0-0	0-0	0-0	0	1	1	0	1	0	0	0	1	0	0	7
21	Eno Inyang		02:22	2-3	0-0	2-2	0	0	0	0	1	6	0	0	0	0	0	2
Team							1	1	2			0		0				
<b>Totals</b>				10-17	2-5	2-2	2	9	11	4	3	24	10	1	2	0	1	9

Shooting By Period		
4 <sup>th</sup> FG%	10-17	58.8%
3PT%	2-5	40.0%
FT%	2-2	100%
GM FG%	10-17	58.8%
3PT%	2-5	40.0%
FT%	2-2	100.0%

Dead Ball Rebounds: 0, 0

Technical Fouls::NONE

**Pitt - 15**

NO.	Name	F/C	Min	FG			Rebounds			Fouls		TP	AS	TO	ST	Blocks		+/-
				M-A	M-A	M-A	OR	DR	TOT	PF	FD					BS	BA	
5	Amber Brown	F	10:00	0-1	0-0	0-0	0	0	0	1	1	0	0	0	0	0	0	-9
21	Maliyah Johnson	F	10:00	4-7	2-4	0-0	0	1	1	0	1	10	0	1	0	0	0	-9
23	Avery Strickland	F	05:42	0-0	0-0	0-0	0	0	0	0	0	0	0	0	0	0	0	-1
2	Liatu King	G	05:48	0-2	0-0	0-0	0	3	3	0	0	0	2	1	0	1	0	-2
11	Marley Washenitz	G	04:32	1-3	0-0	1-1	0	0	0	1	1	3	1	0	1	0	0	-1
4	Emy Hayford		05:28	0-0	0-0	0-0	0	0	0	0	1	0	0	0	0	0	0	-8
1	Dayshyanette Harris		04:18	1-2	0-0	0-0	0	0	0	0	0	2	0	1	0	0	0	-8
22	Gabby Hutcherson		04:12	0-1	0-1	0-0	0	1	1	1	0	0	0	0	0	0	0	-7
Team							1	0	1			0		0				
<b>Totals</b>				6-16	2-5	1-1	1	5	6	3	4	15	3	3	1	1	0	-9

Shooting By Period		
4 <sup>th</sup> FG%	6-16	37.5%
3PT%	2-5	40.0%
FT%	1-1	100%
GM FG%	6-16	37.5%
3PT%	2-5	40.0%
FT%	1-1	100.0%

Dead Ball Rebounds: 0, 0

Technical Fouls::NONE

	Clem	Pitt
Biggest lead	16 (4 <sup>th</sup> 2:08)	0 (1 <sup>st</sup> 10:00)
Best Scoring Run	9(4 <sup>th</sup> 4:40)	3(4 <sup>th</sup> 8:30)
Lead Changes	0	
Times Tied	0	
Time with Lead	09:43	00:00

	Clem	Pitt
Points from		
Turnovers	4	0
Paint	10	8
Second Chance	2	0
Fast Breaks	2	5
Bench	6	2

Period by Period Scoring					
	1st	2nd	3rd	4th	TOT
Clem	10	14	24	24	72
Pitt	18	16	8	15	57



**Clemson at Pitt**

01/15/23 Petersen Events Center, Pittsburgh, PA  
Pitt vs. Clemson

Game Time: 2:00 PM  
Game Duration: 1:45  
Attendance: 953

Officials: Bryan Brunette, Fatou Cissoko-Stephens, Daryl Humphrey

**Clemson - 48**

NO.	Name	F/C	Min	FG			Rebounds			Fouls		TP	AS	TO	ST	Blocks		+/-
				M-A	M-A	M-A	OR	DR	TOT	PF	FD					BS	BA	
5	Amari Robinson	F	17:11	4-4	0-0	0-0	1	4	5	2	1	8	2	1	0	0	0	20
12	Hannah Hank	C	13:58	2-4	0-1	0-0	0	8	8	0	1	4	4	0	1	1	0	23
0	Brie Perpignan	G	15:02	1-3	1-2	2-2	0	0	0	1	1	5	2	0	0	0	0	21
2	Daisha Bradford	G	12:50	3-5	2-2	0-0	0	0	0	0	1	8	4	0	1	0	1	18
22	Ruby Whitehorn	G	12:57	3-4	0-0	0-0	0	0	0	1	0	6	1	0	0	0	0	9
15	Kionna Gaines		00:00	0-0	0-0	0-0	0	0	0	0	0	0	0	0	0	0	0	0
24	Ale'Jah Douglas		12:08	0-1	0-1	0-0	0	1	1	1	0	0	4	2	0	0	0	11
30	Madi Ott		07:03	2-3	1-2	0-0	0	1	1	0	1	5	1	0	2	0	0	16
21	Eno Inyang		07:00	5-7	0-0	2-2	0	0	0	1	1	12	0	0	0	0	0	7
3	MaKayla Elmore		01:51	0-0	0-0	0-0	0	0	0	0	0	0	0	0	0	0	0	0
Team							1	2	3			0			0			
<b>Totals</b>				20-31	4-8	4-4	2	16	18	6	6	48	18	3	4	1	1	25

Shooting By Period		
3 <sup>rd</sup> FG%	10-14	71.4%
3PT%	2-3	66.7%
FT%	2-2	100%
4 <sup>th</sup> FG%	10-17	58.8%
3PT%	2-5	40.0%
FT%	2-2	100%
GM FG%	20-31	64.5%
3PT%	4-8	50.0%
FT%	4-4	100.0%

Dead Ball Rebounds: 0, 0

Technical Fouls::NONE

**Pitt - 23**

NO.	Name	F/C	Min	FG			Rebounds			Fouls		TP	AS	TO	ST	Blocks		+/-
				M-A	M-A	M-A	OR	DR	TOT	PF	FD					BS	BA	
5	Amber Brown	F	18:07	2-5	0-0	0-0	0	1	1	1	1	4	1	2	0	0	1	-18
21	Maliyah Johnson	F	17:08	4-8	2-5	0-0	0	1	1	0	1	10	0	2	1	0	0	-22
23	Avery Strickland	F	12:36	0-5	0-4	0-0	1	0	1	0	0	0	0	0	0	0	0	-10
2	Liatu King	G	11:50	1-5	0-0	2-3	3	3	6	1	2	4	2	1	0	1	0	-14
11	Marley Washenitz	G	08:41	1-3	0-0	1-1	0	0	0	1	1	3	1	0	1	0	0	-6
3	Taisha Exanor		00:00	0-0	0-0	0-0	0	0	0	0	0	0	0	0	0	0	0	0
4	Emy Hayford		11:19	0-0	0-0	0-0	0	0	0	1	1	0	1	1	0	0	0	-19
22	Gabby Hutcherson		10:03	0-1	0-1	0-0	0	3	3	1	0	0	1	1	0	0	0	-18
12	Aislin Malcolm		03:06	0-0	0-0	0-0	0	0	0	0	0	0	0	1	0	0	0	-7
1	Dayshyanette Harris		07:10	1-3	0-1	0-0	1	1	2	1	0	2	0	2	0	0	0	-11
Team							1	0	1			0			0			
<b>Totals</b>				9-30	2-11	3-4	6	9	15	6	6	23	6	10	2	1	1	-25

Shooting By Period		
3 <sup>rd</sup> FG%	3-14	21.4%
3PT%	0-6	0.0%
FT%	2-3	66.7%
4 <sup>th</sup> FG%	6-16	37.5%
3PT%	2-5	40.0%
FT%	1-1	100%
GM FG%	9-30	30.0%
3PT%	2-11	18.2%
FT%	3-4	75.0%

Dead Ball Rebounds: 0, 0

Technical Fouls::NONE

	Clem	Pitt
Biggest lead	16 (4 <sup>th</sup> 2:08)	10 (3 <sup>rd</sup> 9:41)
Best Scoring Run	9(4 <sup>th</sup> 4:40)	3(4 <sup>th</sup> 8:30)
Lead Changes	1	
Times Tied	0	
Time with Lead	15:04	04:37

Points from	Clem	Pitt
Turnovers	14	0
Paint	22	14
Second Chance	2	4
Fast Breaks	2	5
Bench	17	2

	Period by Period Scoring				
	1st	2nd	3rd	4th	TOT
Clem	10	14	24	24	72
Pitt	18	16	8	15	57



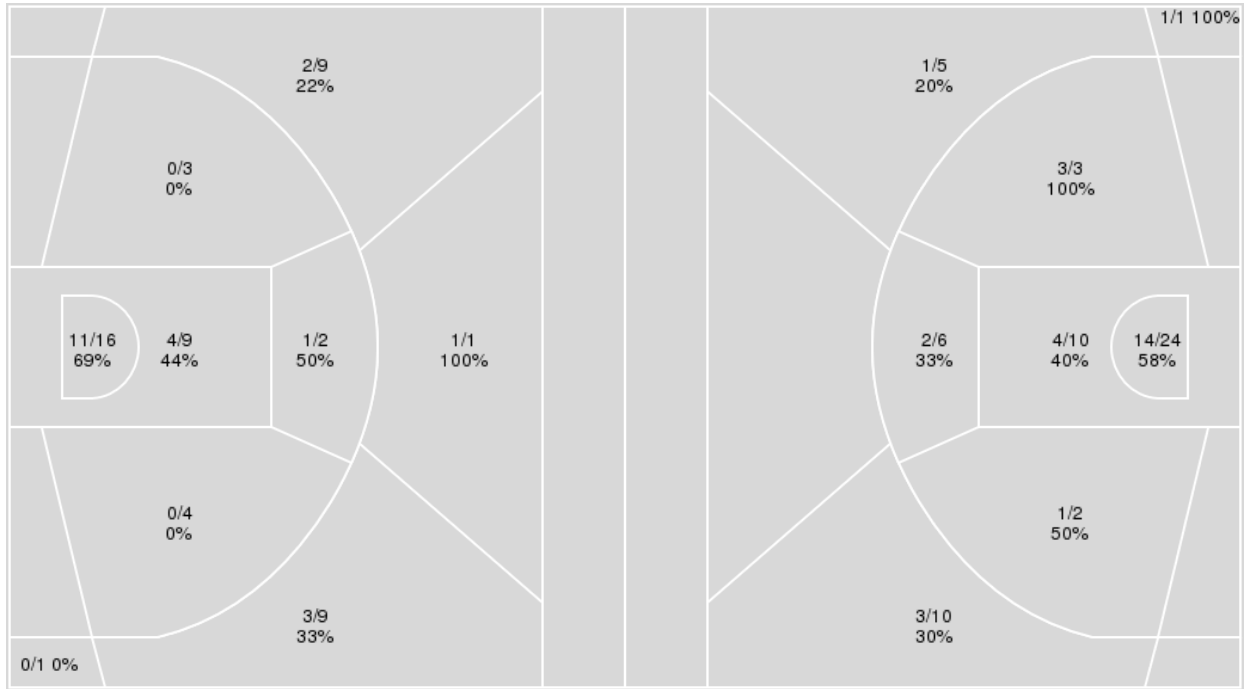
**Officials:** Bryan Brunette, Fatou Cissoko-Stephens, Daryl Humphrey

{ Players => All; } FG Types => All; Results => All;

{ Players => 0, 1, 2, 3, 4, 5, 11, 12, 15, 21, 22, 24, 30; } FG Types => All; Results => All;

**Pitt**

**Clemson**



Pitt	M/A	%
Field Goals	22/54	41
2 Points	16/34	47
3 Points	6/20	30
Free Throws	7/10	70

Clemson	M/A	%
Field Goals	29/61	48
2 Points	24/45	53
3 Points	5/16	31
Free Throws	9/10	90



**Clemson at Pitt**

01/15/23 Petersen Events Center, Pittsburgh, PA  
Pitt vs. Clemson

Game Time: 2:00 PM  
Game Duration: 1:45  
Attendance: 953

Officials: Bryan Brunette, Fatou Cissoko-Stephens, Daryl Humphrey

**Clemson**

No	Name	Mins		Score		Points Diff		Points per Min		Assists		Rebounds		Steals		Turnovers	
		On	Off	On	Off	On	Off	On	Off	On	Off	On	Off	On	Off	On	Off
0	Brie Perpignan	33:30	06:30	59 - 44	13 - 13	15	0	1.76	2.00	18	5	29	5	10	2	10	4
2	Daisha Bradford	24:21	15:39	45 - 34	27 - 23	11	4	1.85	1.73	15	8	19	15	10	2	11	3
3	MaKayla Elmore	07:41	32:19	6 - 16	66 - 41	-10	25	0.78	2.04	0	23	6	28	1	11	4	10
5	Amari Robinson	33:37	06:23	63 - 46	9 - 11	17	-2	1.87	1.41	20	3	30	4	10	2	10	4
12	Hannah Hank	25:49	14:11	54 - 30	18 - 27	24	-9	2.09	1.27	20	3	24	10	9	3	10	4
15	Kionna Gaines	03:23	36:37	8 - 4	64 - 53	4	11	2.36	1.75	1	22	4	30	0	12	1	13
21	Eno Inyang	12:53	27:07	21 - 22	51 - 35	-1	16	1.63	1.88	6	17	8	26	4	8	4	10
22	Ruby Whitehorn	25:23	14:37	38 - 36	34 - 21	2	13	1.50	2.33	14	9	23	11	7	5	11	3
24	Ale'Jah Douglas	22:54	17:06	40 - 41	32 - 16	-1	16	1.75	1.87	13	10	20	14	4	8	7	7
30	Madi Ott	10:29	29:31	26 - 12	46 - 45	14	1	2.48	1.56	8	15	7	27	5	7	2	12

**Pitt**

No	Name	Mins		Score		Points Diff		Points per Min		Assists		Rebounds		Steals		Turnovers	
		On	Off	On	Off	On	Off	On	Off	On	Off	On	Off	On	Off	On	Off
1	Dayshanelle Harris	15:46	24:14	28 - 23	29 - 49	5	-20	1.78	1.20	6	7	14	18	2	3	8	13
2	Liatu King	26:58	13:02	40 - 48	17 - 24	-8	-7	1.48	1.30	8	5	24	8	2	3	11	10
3	Taisha Exanor	00:47	39:13	0 - 4	57 - 68	-4	-11	0.00	1.45	0	13	0	32	0	5	1	20
4	Emy Hayford	23:15	16:45	35 - 44	22 - 28	-9	-6	1.51	1.31	9	4	16	16	2	3	13	8
5	Amber Brown	35:00	05:00	50 - 65	7 - 7	-15	0	1.43	1.40	13	0	28	4	5	0	19	2
11	Marley Washenitz	17:32	22:28	22 - 32	35 - 40	-10	-5	1.25	1.56	4	9	16	16	3	2	9	12
12	Aislin Malcolm	03:06	36:54	4 - 11	53 - 61	-7	-8	1.29	1.44	2	11	2	30	1	4	4	17
21	Maliyah Johnson	35:05	04:55	49 - 63	8 - 9	-14	-1	1.40	1.63	10	3	26	6	5	0	18	3
22	Gabby Hutcherson	17:15	22:45	24 - 27	33 - 45	-3	-12	1.39	1.45	5	8	12	20	3	2	11	10
23	Avery Strickland	25:16	14:44	33 - 43	24 - 29	-10	-5	1.31	1.63	8	5	22	10	2	3	11	10

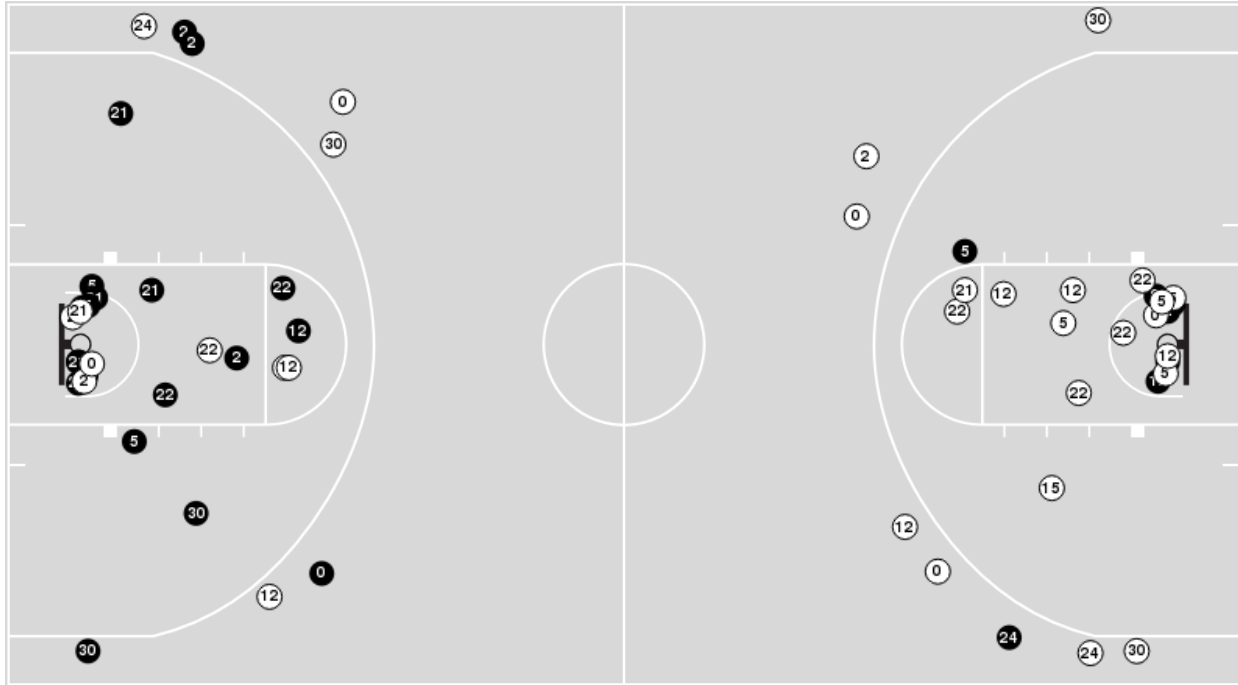


**Officials:** Bryan Brunette, Fatou Cissoko-Stephens, Daryl Humphrey

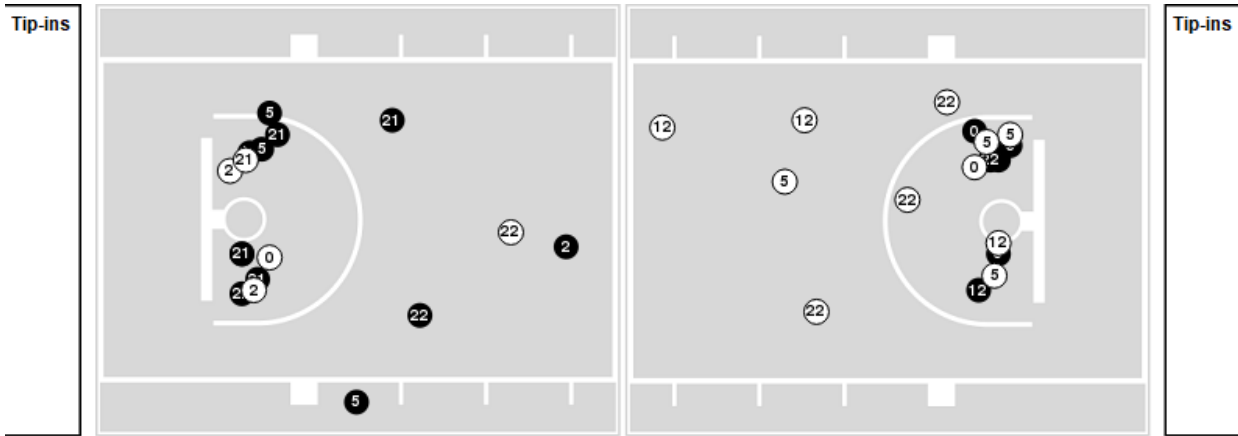
Players => 0, 1, 2, 3, 4, 5, 11, 12, 15, 21, 22, 24, 30 FG Types=>AllResults=>All

**Clemson**

**All Field Goals**



**Blow Up Chart**



**N** Made    **O** Missed    **N** - Player Number

Clemson	M/A	%
Field Goals	29/61	48
2 Points	24/45	53
3 Points	5/16	31
Free Throws	9/10	90

Clemson	M/A	%
Points in the Paint	36 (18 / 34)	53
Fast Break Points	6 (3/3)	100
Second Chance Points	12 (8/11)	73
Effective FG%	52	

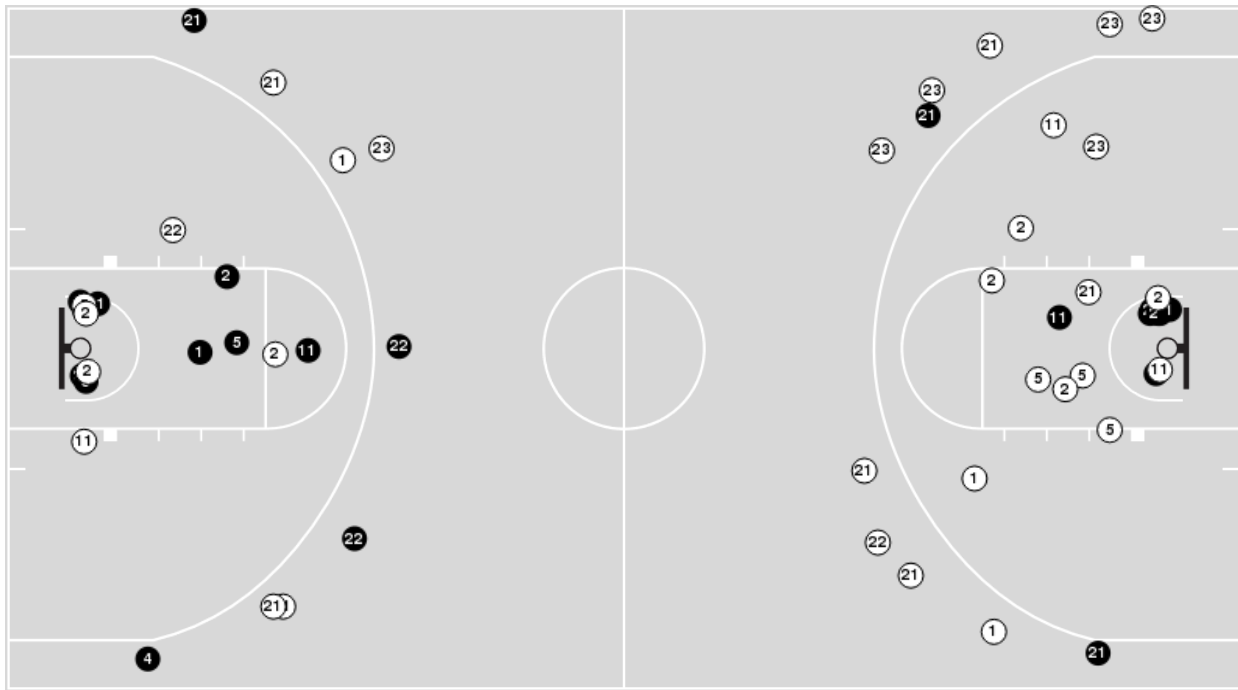


**Officials:** Bryan Brunette, Fatou Cissoko-Stephens, Daryl Humphrey

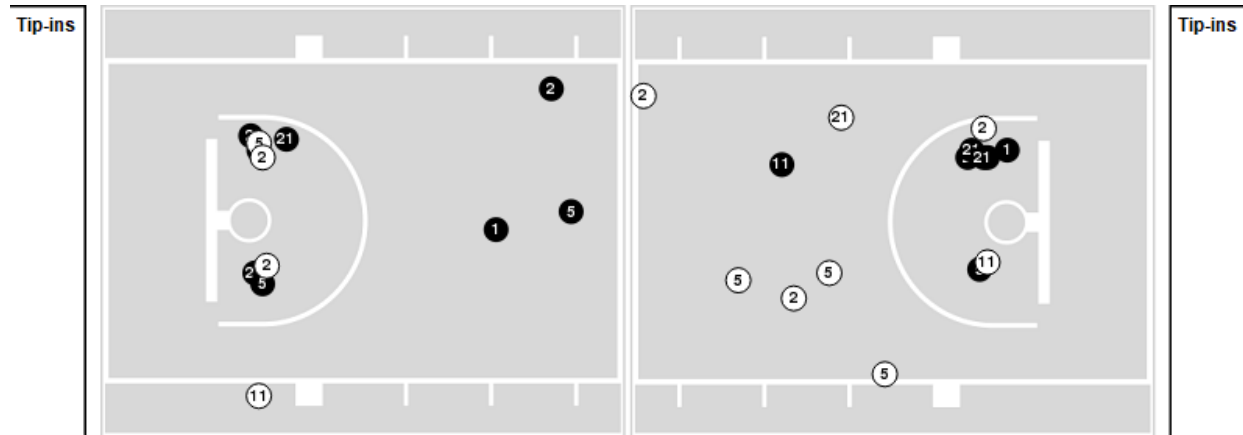
Players => AllFG Types=>AllResults=>All

**Pitt**

**All Field Goals**



**Blow Up Chart**



● Made ○ Missed N - Player Number

Pitt	M/A	%
Field Goals	22/54	41
2 Points	16/34	47
3 Points	6/20	30
Free Throws	7/10	70

Pitt	M/A	%
Points in the Paint	30 (15 / 25)	60
Fast Break Points	14 (6/8)	75
Second Chance Points	4 (3/7)	43
Effective FG%	46	



**Clemson at Pitt**

01/15/23 Petersen Events Center, Pittsburgh, PA  
Pitt vs. Clemson

**Game Time:** 2:00 PM  
**Game Duration:** 1:45  
**Attendance:** 953

**Officials:** Bryan Brunette, Fatou Cissoko-Stephens, Daryl Humphrey

**Clemson**

Lineup	Quarter On	Time On	Quarter Off	Time Off	Time on Court	Score	Score Diff	Reb	Stl	Tov	Ass	PPP
0- Perpignan B/2- Bradford D/5- Robinson A/12- Hank H/22- Whitehorn R/	1	10:00	1	06:21	03:39	8-6	2	3	3	2	3	1.0000
0- Perpignan B/5- Robinson A/12- Hank H/24- Douglas A/30- Ott M/	1	06:21	1	05:28	00:53	2-0	2	0	1	0	1	2.0000
0- Perpignan B/5- Robinson A/21- Inyang E/24- Douglas A/30- Ott M/	1	05:28	1	04:12	01:16	0-6	-6	0	0	0	0	0.0000
2- Bradford D/3- Elmore M/21- Inyang E/22- Whitehorn R/24- Douglas A/	1	04:12	1	02:40	01:32	0-4	-4	1	0	3	0	0.0000
0- Perpignan B/5- Robinson A/12- Hank H/15- Gaines K/24- Douglas A/	1	02:40	1	01:34	01:06	0-2	-2	1	0	1	0	0.0000
0- Perpignan B/2- Bradford D/5- Robinson A/12- Hank H/22- Whitehorn R/	1	01:34	2	08:10	03:24	2-4	-2	1	3	4	0	0.2857
0- Perpignan B/2- Bradford D/5- Robinson A/21- Inyang E/22- Whitehorn R/	2	08:10	2	07:16	00:54	0-0	0	2	0	0	0	0.0000
0- Perpignan B/5- Robinson A/21- Inyang E/22- Whitehorn R/24- Douglas A/	2	07:16	2	06:35	00:41	0-0	0	1	0	0	0	0.0000
0- Perpignan B/3- Elmore M/5- Robinson A/22- Whitehorn R/24- Douglas A/	2	06:35	2	04:19	02:16	2-5	-3	2	1	0	0	0.5000
0- Perpignan B/2- Bradford D/3- Elmore M/12- Hank H/30- Ott M/	2	04:19	2	03:02	01:17	2-0	2	2	0	1	0	1.0638
0- Perpignan B/2- Bradford D/3- Elmore M/12- Hank H/24- Douglas A/	2	03:02	2	02:17	00:45	0-5	-5	0	0	0	0	0.0000
0- Perpignan B/5- Robinson A/15- Gaines K/21- Inyang E/24- Douglas A/	2	02:17	2	00:47	01:30	4-2	2	1	0	0	0	1.3889
0- Perpignan B/5- Robinson A/12- Hank H/15- Gaines K/24- Douglas A/	2	00:47	3	10:00	00:47	4-0	4	2	0	0	1	2.1277
0- Perpignan B/2- Bradford D/5- Robinson A/12- Hank H/22- Whitehorn R/	3	10:00	3	07:58	02:02	4-2	2	2	0	0	2	2.0000
0- Perpignan B/5- Robinson A/12- Hank H/22- Whitehorn R/24- Douglas A/	3	07:58	3	07:40	00:18	0-0	0	0	0	1	0	0.0000
0- Perpignan B/5- Robinson A/12- Hank H/24- Douglas A/30- Ott M/	3	07:40	3	06:33	01:07	4-0	4	1	0	0	1	2.1277
2- Bradford D/5- Robinson A/12- Hank H/24- Douglas A/30- Ott M/	3	06:33	3	06:05	00:28	3-0	3	1	0	0	1	3.0000
2- Bradford D/5- Robinson A/21- Inyang E/24- Douglas A/30- Ott M/	3	06:05	3	03:27	02:38	6-4	2	1	2	1	2	1.0000
0- Perpignan B/2- Bradford D/12- Hank H/21- Inyang E/30- Ott M/	3	03:27	3	02:54	00:33	0-0	0	0	0	0	0	0.0000
0- Perpignan B/2- Bradford D/12- Hank H/21- Inyang E/22- Whitehorn R/	3	02:54	3	01:27	01:27	5-2	3	1	0	0	2	2.5000
0- Perpignan B/2- Bradford D/5- Robinson A/12- Hank H/22- Whitehorn R/	3	01:27	3	00:35	00:52	0-0	0	1	0	0	0	0.0000
0- Perpignan B/2- Bradford D/3- Elmore M/5- Robinson A/22- Whitehorn R/	3	00:35	4	10:00	00:35	2-0	2	0	0	0	0	2.0000
2- Bradford D/3- Elmore M/5- Robinson A/22- Whitehorn R/24- Douglas A/	4	10:00	4	08:44	01:16	0-2	-2	1	0	0	0	0.0000
2- Bradford D/5- Robinson A/12- Hank H/22- Whitehorn R/24- Douglas A/	4	08:44	4	08:08	00:36	4-3	1	1	0	0	2	2.0000
0- Perpignan B/5- Robinson A/12- Hank H/22- Whitehorn R/24- Douglas A/	4	08:08	4	06:12	01:56	4-3	1	1	0	0	2	1.3333
0- Perpignan B/2- Bradford D/5- Robinson A/12- Hank H/22- Whitehorn R/	4	06:12	4	06:06	00:06	0-0	0	0	0	0	0	0.0000
0- Perpignan B/2- Bradford D/5- Robinson A/12- Hank H/30- Ott M/	4	06:06	4	05:29	00:37	3-0	3	1	0	0	1	3.0000
0- Perpignan B/2- Bradford D/12- Hank H/21- Inyang E/30- Ott M/	4	05:29	4	04:40	00:49	2-0	2	0	2	0	1	2.0000
0- Perpignan B/2- Bradford D/5- Robinson A/21- Inyang E/30- Ott M/	4	04:40	4	03:49	00:51	4-2	2	1	0	0	1	2.1277
0- Perpignan B/5- Robinson A/21- Inyang E/22- Whitehorn R/24- Douglas A/	4	03:49	4	03:07	00:42	0-2	-2	0	0	0	0	0.0000
0- Perpignan B/5- Robinson A/12- Hank H/22- Whitehorn R/24- Douglas A/	4	03:07	4	00:00	03:07	7-3	4	6	0	1	3	1.1667





**Clemson at Pitt**

01/15/23 Petersen Events Center, Pittsburgh, PA  
Pitt vs. Clemson

**Game Time:** 2:00 PM  
**Game Duration:** 1:45  
**Attendance:** 953

**Officials:** Bryan Brunette, Fatou Cissoko-Stephens, Daryl Humphrey

**Pitt**

Lineup	Quarter On	Time On	Quarter Off	Time Off	Time on Court	Score	Score Diff	Reb	Stl	Tov	Ass	PPP
2- King L/ 5- Brown A/ 11- Washenitz M/ 21- Johnson M/ 23- Strickland A/	1	10:00	1	06:21	03:39	6-8	-2	2	1	3	1	0.8571
2- King L/ 4- Hayford E/ 5- Brown A/ 21- Johnson M/ 23- Strickland A/	1	06:21	1	05:28	00:53	0-2	-2	1	0	1	0	0.0000
1- Harris D/ 4- Hayford E/ 5- Brown A/ 22- Hutcherson G/ 23- Strickland A/	1	05:28	1	04:12	01:16	6-0	6	2	0	0	2	3.0000
1- Harris D/ 4- Hayford E/ 5- Brown A/ 21- Johnson M/ 22- Hutcherson G/	1	04:12	1	02:40	01:32	4-0	4	0	1	0	1	1.3333
1- Harris D/ 2- King L/ 4- Hayford E/ 21- Johnson M/ 22- Hutcherson G/	1	02:40	1	01:41	00:59	2-0	2	0	0	0	0	2.0000
1- Harris D/ 2- King L/ 11- Washenitz M/ 21- Johnson M/ 22- Hutcherson G/	1	01:41	1	00:28	01:13	0-0	0	3	0	1	0	0.0000
2- King L/ 5- Brown A/ 11- Washenitz M/ 21- Johnson M/ 23- Strickland A/	1	00:28	2	07:16	03:12	4-2	2	2	1	2	1	0.8000
2- King L/ 4- Hayford E/ 5- Brown A/ 21- Johnson M/ 23- Strickland A/	2	07:16	2	05:53	01:23	2-0	2	2	0	0	1	1.0000
1- Harris D/ 2- King L/ 4- Hayford E/ 5- Brown A/ 21- Johnson M/	2	05:53	2	04:19	01:34	3-2	1	2	0	1	1	1.0000
1- Harris D/ 4- Hayford E/ 5- Brown A/ 21- Johnson M/ 22- Hutcherson G/	2	04:19	2	03:02	01:17	0-2	-2	0	0	2	0	0.0000
1- Harris D/ 2- King L/ 4- Hayford E/ 21- Johnson M/ 22- Hutcherson G/	2	03:02	2	02:17	00:45	5-0	5	1	0	0	0	2.6596
2- King L/ 4- Hayford E/ 21- Johnson M/ 22- Hutcherson G/ 23- Strickland A/	2	02:17	2	02:07	00:10	0-0	0	0	0	0	0	0.0000
2- King L/ 4- Hayford E/ 5- Brown A/ 21- Johnson M/ 23- Strickland A/	2	02:07	2	00:47	01:20	2-4	-2	2	0	0	0	1.0638
2- King L/ 4- Hayford E/ 5- Brown A/ 11- Washenitz M/ 23- Strickland A/	2	00:47	2	00:47	00:00	0-0	0	0	0	0	0	0.0000
3- Exanor T/ 4- Hayford E/ 5- Brown A/ 11- Washenitz M/ 23- Strickland A/	2	00:47	3	10:00	00:47	0-4	-4	0	0	1	0	0.0000
2- King L/ 5- Brown A/ 11- Washenitz M/ 21- Johnson M/ 23- Strickland A/	3	10:00	3	07:58	02:02	2-4	-2	3	0	0	0	0.6944
2- King L/ 4- Hayford E/ 21- Johnson M/ 22- Hutcherson G/ 23- Strickland A/	3	07:58	3	06:33	01:25	0-2	-2	0	0	1	0	0.0000
2- King L/ 4- Hayford E/ 12- Malcolm A/ 21- Johnson M/ 22- Hutcherson G/	3	06:33	3	06:05	00:28	0-5	-5	0	0	0	0	0.0000
4- Hayford E/ 5- Brown A/ 12- Malcolm A/ 21- Johnson M/ 22- Hutcherson G/	3	06:05	3	03:27	02:38	4-6	-2	2	1	4	2	0.5714
1- Harris D/ 4- Hayford E/ 5- Brown A/ 22- Hutcherson G/ 23- Strickland A/	3	03:27	3	02:07	01:20	0-2	-2	1	0	1	0	0.0000
1- Harris D/ 2- King L/ 5- Brown A/ 11- Washenitz M/ 23- Strickland A/	3	02:07	3	00:35	01:32	2-3	-1	3	0	1	1	0.8197
2- King L/ 5- Brown A/ 11- Washenitz M/ 21- Johnson M/ 23- Strickland A/	3	00:35	4	08:08	02:27	5-6	-1	1	0	1	1	1.2500
2- King L/ 4- Hayford E/ 5- Brown A/ 21- Johnson M/ 23- Strickland A/	4	08:08	4	06:12	01:56	3-4	-1	1	0	0	1	1.5000
1- Harris D/ 4- Hayford E/ 5- Brown A/ 21- Johnson M/ 22- Hutcherson G/	4	06:12	4	04:40	01:32	0-5	-5	1	0	2	0	0.0000
1- Harris D/ 2- King L/ 4- Hayford E/ 5- Brown A/ 21- Johnson M/	4	04:40	4	02:40	02:00	4-6	-2	1	0	0	1	1.0000
1- Harris D/ 5- Brown A/ 11- Washenitz M/ 21- Johnson M/ 22- Hutcherson G/	4	02:40	4	01:54	00:46	2-3	-1	0	1	0	0	1.0000
5- Brown A/ 11- Washenitz M/ 21- Johnson M/ 22- Hutcherson G/ 23- Strickland A/	4	01:54	4	00:00	01:54	1-2	-1	2	0	0	0	0.2907



**Clemson at Pitt**

01/15/23 Petersen Events Center, Pittsburgh, PA  
Pitt vs. Clemson

**Game Time:** 2:00 PM  
**Game Duration:** 1:45  
**Attendance:** 953

**Officials:** Bryan Brunette, Fatou Cissoko-Stephens, Daryl Humphrey

**Clemson**

Lineup	Time	Score	Score Diff	Pts/Min	Reb	Stl	Tov	Ass	PPP
0- Perpignan B/ 2- Bradford D/ 5- Robinson A/ 12- Hank H/ 22- Whitehorn R/	10:03	14-12	2	1.3930	7	6	6	5	0.7778
0- Perpignan B/ 5- Robinson A/ 12- Hank H/ 22- Whitehorn R/ 24- Douglas A/	05:21	11-6	5	2.0561	7	0	2	5	1.1000
2- Bradford D/ 5- Robinson A/ 21- Inyang E/ 24- Douglas A/ 30- Ott M/	02:38	6-4	2	2.2785	1	2	1	2	1.0000
0- Perpignan B/ 3- Elmore M/ 5- Robinson A/ 22- Whitehorn R/ 24- Douglas A/	02:16	2-5	-3	0.8824	2	1	0	0	0.5000
0- Perpignan B/ 5- Robinson A/ 12- Hank H/ 24- Douglas A/ 30- Ott M/	02:00	6-0	6	3.0000	1	1	0	2	2.0833
0- Perpignan B/ 5- Robinson A/ 12- Hank H/ 15- Gaines K/ 24- Douglas A/	01:53	4-2	2	2.1239	3	0	1	1	1.3889
2- Bradford D/ 3- Elmore M/ 21- Inyang E/ 22- Whitehorn R/ 24- Douglas A/	01:32	0-4	-4	0.0000	1	0	3	0	0.0000
0- Perpignan B/ 5- Robinson A/ 15- Gaines K/ 21- Inyang E/ 24- Douglas A/	01:30	4-2	2	2.6667	1	0	0	0	1.3889
0- Perpignan B/ 2- Bradford D/ 12- Hank H/ 21- Inyang E/ 22- Whitehorn R/	01:27	5-2	3	3.4483	1	0	0	2	2.5000
0- Perpignan B/ 5- Robinson A/ 21- Inyang E/ 22- Whitehorn R/ 24- Douglas A/	01:23	0-2	-2	0.0000	1	0	0	0	0.0000
0- Perpignan B/ 2- Bradford D/ 12- Hank H/ 21- Inyang E/ 30- Ott M/	01:22	2-0	2	1.4634	0	2	0	1	1.0000
0- Perpignan B/ 2- Bradford D/ 3- Elmore M/ 12- Hank H/ 30- Ott M/	01:17	2-0	2	1.5584	2	0	1	0	1.0638
0- Perpignan B/ 5- Robinson A/ 21- Inyang E/ 24- Douglas A/ 30- Ott M/	01:16	0-6	-6	0.0000	0	0	0	0	0.0000
2- Bradford D/ 3- Elmore M/ 5- Robinson A/ 22- Whitehorn R/ 24- Douglas A/	01:16	0-2	-2	0.0000	1	0	0	0	0.0000
0- Perpignan B/ 2- Bradford D/ 5- Robinson A/ 21- Inyang E/ 22- Whitehorn R/	00:54	0-0	0	0.0000	2	0	0	0	0.0000
0- Perpignan B/ 2- Bradford D/ 5- Robinson A/ 21- Inyang E/ 30- Ott M/	00:51	4-2	2	4.7059	1	0	0	1	2.1277
0- Perpignan B/ 2- Bradford D/ 3- Elmore M/ 12- Hank H/ 24- Douglas A/	00:45	0-5	-5	0.0000	0	0	0	0	0.0000
0- Perpignan B/ 2- Bradford D/ 5- Robinson A/ 12- Hank H/ 30- Ott M/	00:37	3-0	3	4.8649	1	0	0	1	3.0000
2- Bradford D/ 5- Robinson A/ 12- Hank H/ 22- Whitehorn R/ 24- Douglas A/	00:36	4-3	1	6.6667	1	0	0	2	2.0000
0- Perpignan B/ 2- Bradford D/ 3- Elmore M/ 5- Robinson A/ 22- Whitehorn R/	00:35	2-0	2	3.4286	0	0	0	0	2.0000
2- Bradford D/ 5- Robinson A/ 12- Hank H/ 24- Douglas A/ 30- Ott M/	00:28	3-0	3	6.4286	1	0	0	1	3.0000



**Officials:** Bryan Brunette, Fatou Cissoko-Stephens, Daryl Humphrey

**Pitt**

Lineup	Time	Score	Score Diff	Pts/Min	Reb	Stl	Tov	Ass	PPP
2- King L/ 5- Brown A/ 11- Washenitz M/ 21- Johnson M/ 23- Strickland A/	11:20	17-20	-3	1.5000	8	2	6	3	0.9004
2- King L/ 4- Hayford E/ 5- Brown A/ 21- Johnson M/ 23- Strickland A/	05:32	7-10	-3	1.2651	6	0	1	2	1.0174
1- Harris D/ 4- Hayford E/ 5- Brown A/ 21- Johnson M/ 22- Hutcherson G/	04:21	4-7	-3	0.9195	1	1	4	1	0.5000
1- Harris D/ 2- King L/ 4- Hayford E/ 5- Brown A/ 21- Johnson M/	03:34	7-8	-1	1.9626	3	0	1	2	1.0000
4- Hayford E/ 5- Brown A/ 12- Malcolm A/ 21- Johnson M/ 22- Hutcherson G/	02:38	4-6	-2	1.5190	2	1	4	2	0.5714
1- Harris D/ 4- Hayford E/ 5- Brown A/ 22- Hutcherson G/ 23- Strickland A/	02:36	6-2	4	2.3077	3	0	1	2	1.5000
5- Brown A/ 11- Washenitz M/ 21- Johnson M/ 22- Hutcherson G/ 23- Strickland A/	01:54	1-2	-1	0.5263	2	0	0	0	0.2907
1- Harris D/ 2- King L/ 4- Hayford E/ 21- Johnson M/ 22- Hutcherson G/	01:44	7-0	7	4.0385	1	0	0	0	2.4306
2- King L/ 4- Hayford E/ 21- Johnson M/ 22- Hutcherson G/ 23- Strickland A/	01:35	0-2	-2	0.0000	0	0	1	0	0.0000
1- Harris D/ 2- King L/ 5- Brown A/ 11- Washenitz M/ 23- Strickland A/	01:32	2-3	-1	1.3043	3	0	1	1	0.8197
1- Harris D/ 2- King L/ 11- Washenitz M/ 21- Johnson M/ 22- Hutcherson G/	01:13	0-0	0	0.0000	3	0	1	0	0.0000
3- Exanor T/ 4- Hayford E/ 5- Brown A/ 11- Washenitz M/ 23- Strickland A/	00:47	0-4	-4	0.0000	0	0	1	0	0.0000
1- Harris D/ 5- Brown A/ 11- Washenitz M/ 21- Johnson M/ 22- Hutcherson G/	00:46	2-3	-1	2.6087	0	1	0	0	1.0000
2- King L/ 4- Hayford E/ 12- Malcolm A/ 21- Johnson M/ 22- Hutcherson G/	00:28	0-5	-5	0.0000	0	0	0	0	0.0000
2- King L/ 4- Hayford E/ 5- Brown A/ 11- Washenitz M/ 23- Strickland A/	00:00	0-0	0	NaN	0	0	0	0	0.0000