



# RICHMOND WOMEN'S BASKETBALL

## 2022-23 GAME NOTES 3X NCAA TOURNAMENT | 9X WNIT

### GAME 3

## RICHMOND SPIDERS

2-0, 0-0 A-10

HEAD COACH: Aaron Roussell  
RICHMOND RECORD: 46-40 (4th Season)  
OVERALL RECORD: 358-162 (19th Season)



VS



## CLEMSON TIGERS

2-0, 0-0 ACC

HEAD COACH: Amanda Butler  
CLEMSON RECORD: 52-71 (5th Season)  
OVERALL RECORD: 282-230 (17th Season)

### GAME INFO

DATE: NOVEMBER 13, 2022

TIME: 2 P.M. EST

LOCATION: CLEMSON, SC

SITE: LITTLEJOHN COLISEUM

LIVE STATS: RICHMONDSPIDERS.COM

BROADCAST: ACCNX

TWITTER: @SPIDERWBBALL

### 2022-23 SCHEDULE/RESULTS

2-0 | A-10: 0-0 | H: 1-0 | A: 1-0 | N: 0-0

NOVEMBER		All Times ET
7	at Liberty	W, 69-48
10	Mount St. Mary's	W, 87-44
13	at Clemson	2 PM
17	at UMBC	7 PM
20	Hampton	2 PM
26	vs. Idaho ^	4 PM
27	vs. Northern Illinois ^	3:30 PM

DECEMBER		
1	at William & Mary	7 PM
4	Duke	2 PM
11	Longwood	2 PM
15	at Elon	11 AM
20	vs. Ball State !	TBD
21	vs. Tarleton State !	TBD
31	George Washington *	12 PM

JANUARY		
4	at Loyola *	7 PM
8	at Davidson *	1 PM
11	VCU *	TBD
18	at Rhode Island *	6 PM
21	George Mason *	6 PM
25	at Fordham *	7 PM
29	Saint Joseph's *	4 PM

FEBRUARY		
1	at UMass *	7 PM
4	at Dayton *	12 PM
8	La Salle *	6 PM
12	Davidson *	1 PM
15	Saint Louis *	6 PM
18	at Duquesne *	2 PM
22	at VCU *	6 PM
25	St. Bonaventure *	6 PM

MARCH		
1-5	Atlantic 10 Championship	TBD

HOME  
\*Atlantic 10 Game  
^ Navy Classic | ! Puerto Rico Classic

### OPENING TIP

- After Richmond opened the 22-23 season with a 21-point victory, 69-48, over Liberty (Nov. 7), the Spiders kept the winning momentum going, picking up an 87-44 win over Mount St. Mary's Thursday at the Robins Center. Four Spiders scored in double figures, paced by Addie Budnik's 16 points and 6 boards, against the Mountaineers.

- The 2-0 Tigers picked up home wins over Gardner-Webb (Nov. 7) 81-54 and Wofford (Nov. 10) 79-68. Against GWU, Ruby Whitehorn came off the bench to score 17 points, while Amari Robinson tallied 14 points and eight rebounds in 16 minutes of action. Daisha Bradford chipped in 10 points, seven boards and four assists. In the win over Wofford, four different players scored in double-figures.

- The last time the Spiders started the season 2-0 was in 2017-18, when UR collected two road victories over Fairfield (72-67, Nov. 10, 2017) and Columbia (85-79, Nov. 12, 2017).

- Richmond paces the Atlantic 10 in scoring margin (32.0), scoring defense (46.0) and three-point percentage (45.9). UR is second in the league in field goal percentage (52.5) and field goal percentage defense (30.8).

### PREVIOUS GAME STARTERS

1

GRACE TOWNSEND  
G / JR. | 5-5 | MIDLOTHIAN, VA.

PTS	REB	AST	STL	MIN
10.0	6.0	4.5	1.5	34.0

32

SIOBHAN RYAN  
G / JR. | 6-0 | BUFFALO, N.Y.

PTS	REB	AST	STL	MIN
12.0	3.5	3.0	1.5	33.0

25

KATIE HILL  
F / SO. | 6-0 | COLTS NECK, N.J.

PTS	REB	AST	STL	MIN
9.5	2.5	1.0	1.5	26.5

11

CAYLA WILLIAMS  
F / SO. | 6-2 | GAINESVILLE, VA.

PTS	REB	AST	BLK	MIN
2.0	2.0	0.0	0.0	15.5

20

ADDIE BUDNIK  
F / JR. | 6-2 | HIGHLAND PARK, ILL.

PTS	REB	AST	BLK	MIN
18.5	6.5	4.0	0.5	31.0

**ROSTER BY POSITION**

**GUARDS (8)**

Angel Burgos, Grace Townsend, Siobhan Ryan, Kylee Lewandowski, Sydney Boone, Katie Hill, Torin Rogers, Rachel Ullstrom

**FORWARDS (6)**

Addie Budnik, Elaina Chapman, Cayla Williams, Jada Green, Emilija Krista Grava, Maggie Doogan

**ROSTER BY CLASS**

**GRADUATE (1)**

Emilija Krista Grava

**SENIORS (2)**

Angel Burgos, Elaina Chapman

**JUNIORS (4)**

Addie Budnik, Kylee Lewandowski, Siobhan Ryan, Grace Townsend

**SOPHOMORES (3)**

Sydney Boone, Katie Hill, Cayla Williams

**FRESHMEN (4)**

Maggie Doogan, Jada Green, Torin Rogers, Rachel Ullstrom

**ROSTER BY STATE**

**FLORIDA**

Jada Green

**ILLINOIS**

Addie Budnik

**MASSACHUSETTS**

Rachel Ullstrom

**NEW JERSEY**

Katie Hill

**NEW YORK**

Siobhan Ryan

**NORTH CAROLINA**

Torin Rogers

**PENNSYLVANIA**

Kylee Lewandowski, Maggie Doogan

**VIRGINIA**

Grace Townsend, Elaina Chapman, Angel Burgos, Sydney Boone, Cayla Williams

**ROSTER BY COUNTRY**

**LATIVA**

Emilija Krista Grava

**ROSTER BY HEIGHT**

6-3.....Elaina Chapman  
6-2.....Addie Budnik  
6-2.....Maggie Doogan  
6-2.....Emilija Krista Grava  
6-2.....Cayla Williams  
6-1.....Jada Green  
6-1.....Kylee Lewandowski  
6-1.....Torin Rogers  
6-1.....Rachel Ullstrom  
6-0.....Siobhan Ryan  
6-0.....Katie Hill  
5-8.....Angel Burgos  
5-8.....Sydney Boone  
5-5.....Grace Townsend

**2022-23 NUMERICAL ROSTER**

#	Name	Pos	Ht	Yr	Hometown (HS/Previous School)
1	Grace Townsend	G	5-5	Jr	Midlothian, Va. (James River)
2	Sydney Boone	G	5-8	So	Richmond, Va. (Highland Springs)
4	Jada Green	F	6-1	Fr	Parkland, Fla. (St. Thomas Aquinas)
11	Cayla Williams	F	6-2	So	Gainesville, Va. (Episcopal)
13	Torin Rogers	G	6-1	Fr	Brasstown, N.C. (Murphy)
20	Addie Budnik	F	6-2	Jr	Highland Park, Ill. (Highland Park)
21	Kylee Lewandowski	G	6-1	Jr	Pittsburgh, Pa. (North Catholic)
22	Rachel Ullstrom	G	6-1	Fr	Auburn, Mass. (Marianapolis Prep)
24	Emilija Krista Grava	F	6-2	GS	Ligatne, Lativa (Wagner)
25	Katie Hill	G	6-0	So	Colts Neck, N.J. (Saint John Vianney)
31	Elaina Chapman	F	6-3	Sr	Richmond, Va. (Trinity Episcopal)
32	Siobhan Ryan	G	6-0	Jr	Buffalo, N.Y. (Sacred Heart Academy)
41	Angel Burgos	G	5-8	Sr	Richmond, Va. (Trinity Episcopal)
44	Maggie Doogan	F	6-2	Fr	Broomall, Pa. (Cardinal O'Hara)

**2022-23 ALPHABETICAL ROSTER**

#	Name	Pos	Ht	Yr	Hometown (HS)
2	Sydney Boone	G	5-8	So	Richmond, Va. (Highland Springs)
20	Addie Budnik	F	6-2	Jr	Highland Park, Ill. (Highland Park)
41	Angel Burgos	G	5-8	Sr	Richmond, Va. (Trinity Episcopal)
31	Elaina Chapman	F	6-3	Jr	Richmond, Va. (Trinity Episcopal)
44	Maggie Doogan	F	6-2	Fr	Broomall, Pa. (Cardinal O'Hara)
4	Jada Green	F	6-1	Fr	Parkland, Fla. (St. Thomas Aquinas)
25	Katie Hill	G	6-0	So	Colts Neck, N.J. (Saint John Vianney)
24	Emilija Krista Grava	F	6-2	GS	Ligatne, Lativa (Wagner)
21	Kylee Lewandowski	G	6-1	So	Pittsburgh, Pa. (North Catholic)
13	Torin Rogers	G	6-1	Fr	Brasstown, N.C. (Murphy)
32	Siobhan Ryan	G	6-0	So	Buffalo, N.Y. (Sacred Heart Academy)
1	Grace Townsend	G	5-5	So	Midlothian, Va. (James River)
22	Rachel Ullstrom	G	6-1	Fr	Auburn, Mass. (Marianapolis Prep)
11	Cayla Williams	F	6-2	So	Gainesville, Va. (Episcopal)

**COACHING STAFF**

**HEAD COACH**

Aaron Roussell (Iowa, '01), 4th season

**ASSISTANT COACHES**

Jeanine Radice (Fordham, '89), 4th season

Ka'lia Johnson (Duke, '15), 1st season

Brittany Pinkney (VCU, '08), 4th season

**DIRECTOR OF BASKETBALL OPERATIONS**

Janelle Silver-Martin (Morgan State, '16), 2nd season

**DIRECTOR OF PROGRAM DEVELOPMENT**

John Studer (Illinois, '81), 4th season

**PRONUNCIATION GUIDE**

#20..Budnik ..... (BUD-nick)  
#21..Lewandowski..... (Lew-an-DOW-ski)  
#32..Siobhan ..... (Sha-VOHN)  
Roussell..... (Ruh-SELL)  
Radice ..... (Rah-DEES)

**UNIVERSITY FACTS**

Location .....	University of Richmond, Va.
Founded .....	1830
Enrollment .....	3,147
Nickname .....	Spiders
Colors .....	Red and Blue
President .....	Kevin F. Hallock
Director of Athletics .....	John Hardt
SWA/Associate AD .....	LaRee Sugg
Conference .....	Atlantic 10
Affiliation .....	NCAA Division I
Home Court/Capacity .....	Robins Center/7,201
School Website .....	www.richmond.edu

**TEAM INFORMATION**

2021-22 Overall Record .....	16-14
2021-22 A-10 Record .....	7-9
2021-22 A-10 Finish .....	8th
2021-22 Home Record .....	7-7
2021-22 Away Record .....	8-5
2021-22 Neutral Record .....	1-2
Starters Returning/Lost .....	3/2
Letterwinners Returning/Lost .....	8/8
Newcomers .....	4

**RETURNING STAT LEADERS**

Points .....	Addie Budnik (13.6)
Rebounds .....	Addie Budnik (5.9)
Assists .....	Grace Townsend (158)
3-Point FG .....	Addie Budnik (43)
3-Point FG% .....	Addie Budnik (.361)
Free Throw % .....	Grace Townsend (.778)
Field Goal % .....	Addie Budnik (.498)
Blocks .....	Addie Budnik (77)
Steals .....	Grace Townsend (37)
Minutes .....	Addie Budnik (33.7)

**ATHLETICS PUBLIC RELATIONS**

Public Relations Contact .....	Bridgette Robles
Office Phone .....	(804)287-6455
Cell Phone .....	(417) 818-7379
E-Mail Address .....	brobles@richmond.edu
Richmond Athletics Website .....	richmondspiders.com
Twitter/Instagram .....	@SpiderWBBall
Facebook .....	/RichmondWBB
YouTube .....	/RichmondSpiders
Conference Website .....	www.atlantic10.com



**SPIDER  
BASKETBALL**

**SERIES HISTORY VS CLEMSON**

This is the second time the squads will face off since the 2009-10 season. The Spiders collected a 86-67 win in Storrs, Conn. as part of the WBCA Classic. Brittani Shells became the 17th Spider to reach the 1,000 points scored mark in UR women's basketball program history. Shells went 8-for-12 from the field scoring a game-high 21 points and five assists. Shells finished her playing career second all-time in program history with 2,042 points.

**SCOUTING THE TIGERS**

The 2-0 Tigers picked up home wins over Gardner-Webb (Nov. 7) 81-54 and Wofford (Nov. 10) 79-68. Against GWU, Ruby Whitehorn came off the bench to score 17 points, while Amari Robinson tallied 14 points and eight rebounds in 16 minutes of action. Daisha Bradford chipped in 10 points, seven boards and four assists. In the win over Wofford, four different players scored in double-figures.

**BUDNIK BLOCKING PARTY**

Addie Budnik finished her sophomore campaign 12th in the country with 77 total blocks and 11th in the country averaging 2.57 blocks-per-game. She was second in the league to Saint Louis' Brooke Flowers. Budnik paced a Spiders squad that tallied 159 total blocks to lead the A-10 and rank 17th nationally and ninth overall with 5.3 blocks per game.

**PRESEASON EYES ON BUDNIK**

Addie Budnik was named to the 2023 Becky Hammon Mid-Major Player of the Year, presented by Her Hoop Stats (10/19). The award was first given out to South Dakota's Ciara Duffy in 2020, while FGCU's Kierstan Bell brought it home in 2021 and 2022. Budnik was also named to the Katrina McClain Award, to honor the best power forward (10/20), as announced by the Naismith Memorial Basketball Hall of Fame and the Women's Basketball Coaches Association. She is one of five non-power five players and the lone A-10 player to appear on the list.

**NEW KIDS ON CAMPUS**

The Spiders have five new faces on the squad this season. Graduate transfer Emilija Krista Grava joins the Spiders after a four-year career at Wagner. The 2022-23 freshman class includes guards Torin Rogers (Brasstown, N.C.) and Rachel Ullstrom (Auburn, Mass.) and forwards Jada Green (Parkland, Fla.) and Maggie Doogan (Broomall, Pa.). Rogers, Green and Doogan were each McDonalds All-American nominees during their prep careers.

**BUDNIK NAMED PRESEASON FIRST-TEAM ALL-CONFERENCE**

Junior Addie Budnik is the Spiders first all-conference first team pick since Janelle Hubbard in 2016. Budnik is Richmond's leading returner in scoring, rebounds, 3-pointers, blocks, and minutes played. She posted double-digits in 23 of 30 games last season, including nine in-a-row from Nov. 18 to Dec. 19. She led Richmond with 19 points against Davidson in the second round of the A-10 Tournament. Budnik opened the season with her first-career double-double on 16 points and a career-high 10 rebounds against Charlotte. She notched six 20+ point games including a tied career-high 23 against UMBC. She put up a career-high seven blocks in back-to-back games early in the season, and she ended the regular season by scoring the game-winning basket in the last second against VCU for a comeback victory where the Spiders erased a 17-point deficit. Her team-high 77 blocks last year are second-most in a single season in Richmond's program history.

**ATLANTIC 10 2022-23 STANDINGS**

Team.....	A-10 .....	Overall
<b>Richmond.....</b>	<b>0-0.....</b>	<b>2-0</b>
Davidson .....	0-0.....	1-0
Duquesne .....	0-0.....	2-0
Fordham.....	0-0.....	2-0
Loyola Chicago .....	0-0.....	1-1
Saint Joseph's.....	0-0.....	2-0
UMass.....	0-0.....	1-1
VCU.....	0-0.....	1-1
Dayton.....	0-0.....	0-2
George Mason .....	0-0.....	0-2
George Washington .....	0-0.....	1-1
La Salle .....	0-0.....	1-1
Rhode Island .....	0-0.....	1-1
Saint Louis .....	0-0.....	1-1
St. Bonaventure .....	0-0.....	0-2

**2022-23 A-10 PRESEASON AWARDS**
**PRESEASON ALL-CONFERENCE FIRST TEAM**

Anna DeWolfe, Fordham  
 Kayla Spruill, La Salle  
 Sam Breen, Massachusetts  
 Sydney Taylor, Massachusetts  
 Addie Budnik, Richmond  
 Sara Te-Biasu, VCU

**PRESEASON ALL-CONFERENCE SECOND TEAM**

Elle Sutphin, Davidson  
 Asiah Dingle, Fordham  
 Claire Jacobs, La Salle  
 Destiney Philoxy, Massachusetts  
 Katie Jekot, Saint Joseph's  
 Brooke Flowers, Saint Louis

**PRESEASON ALL-CONFERENCE THIRD TEAM**

Tess Myers, Duquesne  
 Mayowa Taiwo, George Washington  
 Tenin Magassa, Rhode Island  
 Emma Squires, Rhode Island  
 Talya Brugler, Saint Joseph's  
 Kyla McMakin, Saint Louis

**PRESEASON ALL-DEFENSIVE TEAM**

Megan McConnell, Duquesne  
 Asiah Dingle, Fordham  
 Mayowa Taiwo, George Washington  
 Destiney Philoxy, Massachusetts  
 Brooke Flowers, Saint Louis

**2022-23 A-10 PRESEASON POLL**

1. Massachusetts (15) - 225
2. La Salle - 188
3. Rhode Island - 184
4. Fordham - 183
5. VCU - 152
6. Saint Joseph's - 140
7. Davidson - 135
8. Richmond - 125
9. Duquesne - 109
10. Dayton - 99
11. George Washington - 82
12. Saint Louis - 73
13. Loyola Chicago - 41
14. George Mason - 38
15. St. Bonaventure - 26

**RICHMOND PICKED EIGHTH IN A-10 PRESEASON POLL**

The Spiders, who finished eighth in the conference last season with a 7-9 mark in league play, received 125 points in the voting process from the A-10's head coaches. UMass was the unanimous favorite with all 15 first-place votes and 225 points. La Salle was picked second with 188 points, and Rhode Island rounded out the top three with 184 points.

**KOCLANES INDUCED INTO RICHMOND ATHLETICS HALL OF FAME**

Michelle "Belle" Koclanes '02 was inducted into the Richmond Athletics Hall of Fame on Nov. 4. Koclanes finished with 1,205 points and program record 793 assists. The three-time team captain helped the Spiders transition from the CAA to the A-10, collecting All-Conference and All-Academic in both leagues. Her career 160 three-pointers and 300 free throws made remain in the program's Top-10, as well as her 14 free throws made in a game. After playing professionally overseas in Greece and Bulgaria, Koclanes made the jump to coaching, serving as an assistant coach at American and Old Dominion before becoming the head coach at Dartmouth from 2013-21. She joined former Spider Amy Mallon's staff at Drexel prior to the 2022-23 season.

**MWANZA, SWIDER, SWEENEY SIGN WITH UR FOR 2023-24 SEASON**

Head Coach Aaron Roussell welcomed Melissa Mwanza, Courtney Swider and Ally Sweeney to the Richmond program on National Signing Day Wednesday.

Melissa Mwanza, a post player from Life Christian Academy in Richmond, Va., averaged 11 points and six rebounds per game as a junior. Her sophomore season was cut short due to COVID. Mwanza moved to Life Christian from Zimbabwe prior to the start of her sophomore season. She also gained a lot of experience playing with AAU team Cap City Ballerz.

Ally Sweeney, a point guard, comes to Richmond as a four-year starter for Sparta High in Sparta, N.J. She led her squad to a State Championship in 2021 and 2022, as well as three-straight league and county championship titles. She is a three-time All-League and All-County selection and Sparta High team MVP, while twice serving as team captain.

Courtney Swider, a 6-4 forward from Portsmouth, R.I., helped Tabor Academy to a NEPSAC Class AA Championship last season. From a basketball family, both her parents played college basketball, her mother at University of New Hampshire and her father at Fordham University. Her brother Cole is a rookie on the Los Angeles Lakers and her sister Kylie is a Junior on the Villanova Women's Basketball team. Courtney is also a member of the varsity volleyball team at Tabor.



**SERIES HISTORY VS CLEMSON**

All-Time Record: 1-0

Trend: W1

First Meeting: 11/27/09 (W, 86-67)

Last Meeting: 11/27/09 (W, 86-67)

**TALE OF THE TAPE**

Stats ..... CU ..... UR

Points Per Game ..... 80.0 ..... 78.0

Opp. PPG ..... 122.0 ..... 46.0

Scoring Margin ..... +19.0 ..... +32.0

FG Percentage ..... 480 ..... 525

Opp. FG Percentage ..... 333 ..... 308

3-Point Percentage ..... 404 ..... 459

Opp. 3-Point Percentage ..... 306 ..... 246

Free Throw Percentage ..... 778 ..... 825

Opp. FT Percentage ..... 852 ..... 526

Rebounds Per Game ..... 47.5 ..... 36.5

Opp. Reb Per Game ..... 32.5 ..... 27.5

Rebound Margin ..... +15.0 ..... +9.0

Assists Per Game ..... 18.5 ..... 16.5

Opp. Assists Per Game ..... 11.0 ..... 11.5

Turnovers Per Game ..... 26.5 ..... 15.5

Opp. Turnovers Per Game ..... 20.5 ..... 21.0

Turnover Margin ..... -6.0 ..... +5.5

Asst/TO Ratio ..... 0.7 ..... 1.1

Steals Per Game ..... 10.5 ..... 12.0

Opp. Steals Per Game ..... 13.5 ..... 6.0

Blocks Per Game ..... 4.0 ..... 1.0

Opp. Blocks Per Game ..... 1.5 ..... 3.0

**1,000 POINT SCORERS (26 Members)**

<b>1) Karen Elsner</b> ..... <b>2,367</b>	<b>14) Michele Koclanes</b> ..... <b>1,205</b>
1981-82 ..... 624	1998-99 ..... 202
1982-83 ..... 572	1999-00 ..... 304
1983-84 ..... 646	2000-01 ..... 340
1984-85 ..... 525	2001-02 ..... 359
<b>2) Brittani Shells</b> ..... <b>2,042</b>	<b>15) Ginny Norton</b> ..... <b>1,194</b>
2007-08 ..... 433	1987-88 ..... 158
2008-09 ..... 484	1988-89 ..... 295
2009-10 ..... 550	1989-90 ..... 270
2010-11 ..... 575	1990-91 ..... 471
<b>3) Kate Flavin</b> ..... <b>1,770</b>	<b>16) Jennifer Meade</b> ..... <b>1,177</b>
2001-02 ..... 242	1994-95 ..... 52
2002-03 ..... 463	1995-96 ..... 232
2003-04 ..... 594	1996-97 ..... 389
2004-05 ..... 471	1997-98 ..... 504
<b>4) Pam Bryant</b> ..... <b>1,766</b>	<b>17) Jaide Hinds-Clarke</b> ..... <b>1,130</b>
1986-87 ..... 288	2016-17 ..... 219
1987-88 ..... 379	2017-18 ..... 226
1988-89 ..... 579	2018-19 ..... 307
1989-90 ..... 520	2019-20 ..... 378
<b>5) Janelle Hubbard</b> ..... <b>1,717</b>	<b>18) Johanna McKnight</b> ..... <b>1,106</b>
2013-14 ..... 343	2004-05 ..... 63
2014-15 ..... 460	2006-07 ..... 256
2015-16 ..... 492	2007-08 ..... 415
2016-17 ..... 422	2008-09 ..... 372
<b>6) Laurie Governor</b> ..... <b>1,655</b>	<b>19) Saona Chapman</b> ..... <b>1,100</b>
1984-85 ..... 341	2003-04 ..... 481
1985-86 ..... 444	2004-05 ..... 361
1986-87 ..... 461	2005-06 ..... 258
1987-88 ..... 409	<b>20) Rachael Bilney</b> ..... <b>1,073</b>
<b>7) Julie Jones</b> ..... <b>1,521</b>	2008-09 ..... 156
1988-89 ..... 378	2009-10 ..... 189
1989-90 ..... 354	2010-11 ..... 368
1990-91 ..... 385	2011-12 ..... 360
1991-92 ..... 404	<b>21) Dana Pappas</b> ..... <b>1,071</b>
<b>8) Abby Oliver</b> ..... <b>1,488</b>	1984-85 ..... 205
2008-09 ..... 207	1985-86 ..... 287
2009-10 ..... 336	1986-87 ..... 237
2010-11 ..... 419	1987-88 ..... 342
2011-12 ..... 526	<b>22) Jackie Isreal</b> ..... <b>1,067</b>
<b>9) Micaela Parson</b> ..... <b>1,401</b>	1981-82 ..... 326
2014-15 ..... 83	1982-83 ..... 232
2015-16 ..... 400	1983-84 ..... 259
2016-17 ..... 336	1984-85 ..... 250
2017-18 ..... 582	<b>23) Denise Winn</b> ..... <b>1,048</b>
<b>10) Amber Goppert</b> ..... <b>1,398</b>	1992-93 ..... 136
2000-01 ..... 197	1993-94 ..... 360
2001-02 ..... 475	1994-95 ..... 294
2002-03 ..... 373	1995-96 ..... 258
2003-04 ..... 353	<b>24) Lauren Tolson</b> ..... <b>1,012</b>
<b>11) Genevieve Okoro</b> ..... <b>1,337</b>	2012-13 ..... 75
2010-11 ..... 192	2013-14 ..... 174
2011-12 ..... 349	2014-15 ..... 433
2012-13 ..... 62	2015-16 ..... 107
2013-14 ..... 349	2016-17 ..... 223
2014-15 ..... 385	<b>25) Kristina King</b> ..... <b>1,006</b>
<b>12) Christina Campion</b> ..... <b>1,261</b>	2010-11 ..... 75
2003-04 ..... 311	2011-12 ..... 136
2004-05 ..... 305	2012-13 ..... 419
2005-06 ..... 68	2013-14 ..... 376
2006-07 ..... 313	<b>26) Kate Klimkiewicz</b> ..... <b>1,002</b>
2007-08 ..... 264	2018-19 ..... 12
<b>13) Ebony Tanner</b> ..... <b>1,215</b>	2019-20 ..... 323
1999-00 ..... 106	2020-21 ..... 314
2000-01 ..... 227	2021-22 ..... 353
2001-02 ..... 364	
2002-03 ..... 518	

## 2022-23 RICHMOND WOMEN'S BASKETBALL

### INDIVIDUAL SUPERLATIVES

#### Double-Digit Scoring Games

Player	19-20	20-21	21-22	22-23	Career
Addie Budnik	14	23	2		39
Elaina Chapman	3	5			8
Grace Townsend	6	16	1		23
Siobhan Ryan	3	9	2		14
Angel Burgos	1				1
Sydney Boone		2			2
Cayla Williams		2			2
Katie Hill		2	1		3
Rachel Ullstrom			1		1

#### 20-Point Games

Player	19-20	20-21	21-22	22-23	Career
Addie Budnik	2	6	1		9
Siobhan Ryan	3	3			6
Grace Townsend	1				1

#### Double-Doubles

Player	19-20	20-21	21-22	22-23	Career
Elaina Chapman	2	2			4
Siobhan Ryan	1				1
Addie Budnik		1			1
Grace Townsend		2			2

#### 5-Assist Games

Player	19-20	20-21	21-22	22-23	Career
Grace Townsend	5	15	1		21
Addie Budnik		2	1		3
Siobhan Ryan			1		1

#### 5-Steal Games

Player	19-20	20-21	21-22	22-23	Career
Elaina Chapman	1				1
Kate Klimkiewicz	2	3			5
Grace Townsend		1			1

#### 10-Rebound Games

Player	19-20	20-21	21-22	22-23	Career
Elaina Chapman	2	7			9
Siobhan Ryan	1				1
Addie Budnik		1			1
Kylee Lewandowski		1			1
Grace Townsend		1			1

#### Double-Digit Scoring Streaks

Player	Current	Longest
Addie Budnik	5	9
Grace Townsend		5
Elaina Chapman		2
Siobhan Ryan	2	2
Angel Burgos		1
Sydney Boone		1
Cayla Williams		1
Katie Hill	1	1

#### Games Started Streak

Player	Current	Longest
Addie Budnik	4	44
Siobhan Ryan	4	26
Grace Townsend	4	26

### THE LAST TIME THE SPIDERS...

Won at home	11/10/22 vs Mount St. Mary's (W, 87-44)
Won on the road	11/7/22 at Liberty (W, _)
Won on a neutral court	12/20/21 vs. Southern Miss (W, 87-75)
Scored 100 or more points	11/22/17 vs. Savannah State (W, 100-63)
Gave up 100 or more points	1/09/99 vs. JMU (W, 114-104)
Scored less than 50 points	11/26/21 vs. Long Beach State (L, 52-44)
Allowed less than 50 points	11/10/22 vs. Mount St. Mary's (W, 87-44)
Went into overtime	1/15/22 vs. UMass (L, 73-72, OT)
Won in overtime	3/11/21 vs. George Washington (A-10 2nd Round) (W, 58-54, OT)
Went into double-overtime	2/11/14 vs. Fordham (W, 78-77, 2OT)
Won by 20 or more	11/7/22 at Liberty (W, 69-48)
Won by 30 or more	12/29/21 vs. Coppin State (W, 90-50)
Won by 40 or more	11/10/22 vs. Mount St. Mary's (W, 87-44)
Lost by 50 or more	1/23/10 at Dayton (L, 83-31)
Won five games in-a-row	12/12/21-1/5/22 (Seven Straight)
Won 10 games in-a-row	12/29/89-02/10/90 (15 Straight)
Lost five games in-a-row	1/5/19-1/23/19 (Five Straight)
Had five players score in double-figures	2/23/22 vs. Fordham (W, 79-69) (5)
Erased a double-digit deficit to win	2/23/22 at VCU (17) (W, 59-57)
Recorded a double-double	2/23/22 vs. Fordham (Grace Townsend, 25pts, 13reb)
Had a player score 20 or more	11/7/22 at Liberty (Addie Budnik, 21 pts)
Had a player score 25 or more	2/23/22 vs. Fordham (Grace Townsend, 25 pts)
Had a player score 30 or more	2/27/18 vs. Davidson (Micaela Parson, 30)
Had two players score 20 or more	11/21/21 vs. UMBC (Budnik, 23 pts; Ryan, 22 pts)
Had a player record 15 rebounds or more	2/24/19 vs. La Salle (Jaide Hinds-Clarke, 15 rebs)
Had a player record 5 blocks or more	12/1/21 vs. UMBC (Addie Budnik, 5)
Had a player record 5 steals or more	2/16/22 at Duquesne (Grace Townsend, 6)
Had a player with 10 assists or more	12/4/21 at Ohio (Grace Townsend, 10)
Had a player make 5 or more 3's	2/19/22 vs. Rhode Island (Emma Squires, 7)
Had a player record 20 pts, 15 rebs.	2/14/15 vs. La Salle (Genevieve Okoro, 27 pts, 15 reb)
Had a player record 20 pts, 20 rebs.	12/20/02 @ William & Mary (Kate Flavin, 24 pts, 22 reb)

### RICHMOND PROGRAM HISTORY

First Season	1919-20
All-Time Record	981-732-7
Most Wins in a Season	26 (1990-91)
NCAA Appearances (Last)	3 (2005)
WNIT Appearances (Last)	9 (2015)
Winningest Coach	Michael Shafer (223 Wins)

### RICHMOND TEAM RECORDS

Most Points Scored	11/30/96 vs. Delaware State (123)
FG Made	11/30/86 vs. Queens (46)
3FG Made	12/28/98 vs. UMass (17)
Free Throws Made	11/20/84 vs. Georgetown (39)
Offensive Rebounds	2/2/95 vs. George Mason (31)
Defensive Rebounds	12/29/21 vs. Coppin State (42)
Total Rebounds	11/26/88 vs. Georgia Tech (67)
Assists	11/30/96 vs. Delaware State (33)
Turnovers	1/3/97 vs. ODU (36)
Blocked Shots	11/21/21 vs. UMBC (13)
Steals	12/29/92 vs. Stony Brook (23)

***RICHMOND'S RECORD WHEN...***

	<b>Non-Conference</b>	<b>A-10</b>	<b>Postseason</b>	<b>Overall</b>
Playing at home	1-0	0-0	0-0	1-0
On the road	1-0	0-0	0-0	1-0
Neutral court	0-0	0-0	0-0	0-0
After a loss	0-0	0-0	0-0	0-0
Playing a ranked opponent	0-0	0-0	0-0	0-0
Playing during the day	1-0	0-0	0-0	1-0
Playing at night	1-0	0-0	0-0	1-0
Leading after first quarter	1-0	0-0	0-0	1-0
Trailing after first quarter	1-0	0-0	0-0	1-0
Tied after first quarter	0-0	0-0	0-0	0-0
Leading at halftime	2-0	0-0	0-0	2-0
Trailing at halftime	0-0	0-0	0-0	0-0
Tied at halftime	0-0	0-0	0-0	0-0
Leading after third quarter	2-0	0-0	0-0	2-0
Trailing after third quarter	0-0	0-0	0-0	0-0
Tied after third quarter	0-0	0-0	0-0	0-0
Leading with five mins to play in regulation	2-0	0-0	0-0	2-0
Trailing with five mins to play in regulation	0-0	0-0	0-0	0-0
Tied with five mins to play in regulation	0-0	0-0	0-0	0-0
Scoring first	1-0	0-0	0-0	1-0
Opponent scores first	1-0	0-0	0-0	1-0
Outrebounds opponent	1-0	0-0	0-0	1-0
Outrebounded by opponent	1-0	0-0	0-0	1-0
Higher FG% than opponent	1-0	0-0	0-0	2-0
Lower FG% than opponent	0-0	0-0	0-0	0-0
Makes more 3's than opponent	1-0	0-0	0-0	1-0
Makes fewer 3's than opponent	1-0	0-0	0-0	1-0
Makes more free throws than opponent	2-0	0-0	0-0	2-0
Opponent makes more free throws	0-0	0-0	0-0	0-0
Makes equal free throws as opponent	0-0	0-0	0-0	0-0
Commits more turnovers than opponent	0-0	0-0	0-0	0-0
Commits fewer turnovers than opponent	2-0	0-0	0-0	2-0
Commits equal turnovers as opponent	0-0	0-0	0-0	0-0
Playing in November	2-0	-	-	2-0
Playing in December	-	-	-	0-0
Playing in January	-	-	-	0-0
Playing in February	-	-	-	0-0
Playing in March	-	-	-	0-0



## HEAD COACH AARON ROUSSELL

### FOURTH SEASON AT RICHMOND (IOWA '01)

Aaron Roussell enters his fourth season at the helm of the Richmond Spiders women's basketball team in 2022-23. He was named head coach on April 2, 2019. Roussell has 18 years of head coaching experience and a career winning percentage of .687 with an overall record of 356-162.

In year three with the Spiders, Roussell saw his best statistical season offensively at Richmond. The team ranked first in the Atlantic 10 in field goal percentage, effective field goal percentage, and two-point percentage while ranking second in three-point percentage and points per game, and third in assists. Previously, the Spiders ranked 13th and 14th in each of these categories in Roussell's first season as head coach in 2019-20. The Spiders also ranked top-10 in the nation in effective field goal percentage and two-point percentage after ranking 339th in both categories in 2019-20.

The Spiders finished the 2021-22 season 16-14 overall featuring an eight-game win streak that saw a 2-0 mark in the Florida Atlantic Pre-Christmas Tournament and a buzzer-beating win at A-10 opponent George Washington. The season was also highlighted by a Power 5 win as the Spiders defeated Virginia, 74-65, at the Cavalier Classic.

Additionally in 2021-22, Roussell coached Emma Squires to A-10 Sixth Woman of the Year honors while Addie Budnik was named All-Conference Second Team.

#### ROUSSELL YEAR-BY-YEAR RECORD

Year	Record	A-10	Finish	Postseason
22-23	2-0			
21-22	16-14	7-9	8th	0-1
20-21	13-9	9-6	6th	1-1
19-20	15-17	7-9	9th	1-1

**Richmond Total:** 45-40

**Atlantic 10 Total:** 23-25

**Career Coaching Record:** 357-162

#### PROFILE

Hometown - Plymouth, Minn.  
Education - B.A. Iowa '01  
M.A. Minnesota State '04

#### CAREER HIGHLIGHTS

- Coached Addie Budnik to A-10 Rookie of the Year honors in 2020-21
- Two-time Patriot League Coach of the Year
- Bucknell record for wins in a season (28-6 in 2018-19)
- First WNIT victory in Patriot League history (2016)
- Four straight national postseason appearances at Bucknell (NCAA - 2017, 2019, WNIT - 2016, 2018)
- Bucknell-record 29-game home winning streak
- Four straight 20-win seasons (2016-19)
- Guided Bucknell's Claire DeBoer to 2017 Patriot League Player of the Year and Tournament MVP honors

#### HEAD COACHING EXPERIENCE

Richmond - 2019-present  
Bucknell - 2012-19  
University of Chicago - 2004-12

Patriot League regular season and tournament titles in 2018-19, advancing to the NCAA Tournament.

The Bison won the Patriot League title and the top seed in the tournament in 2018-19, putting together its best offensive season in program history, setting program single-season records in points scored (2,462), field goals (875), 3-pointers (283) and assists (529). Bucknell's four-straight postseason appearances is the best run in program history. Roussell led the Bison to a 22-10 record in 2017-18, including a 15-3 mark in league play, finishing second in the standings. Bucknell accepted an invitation to the WNIT and played at West Virginia to cap the season.

Roussell turned around the Bucknell program almost immediately upon his arrival in Lewisburg, Pa., for the 2012-13 season. The year prior to his arrival, the Bison only won five games and he improved that mark 10 wins in year one with a 15-15 record - his lone season at Bucknell not over a .500 winning percentage. He finished as a finalist for the WBCA Spalding Maggie Dixon Division I Rookie Coach of the Year Award in 2013. He continued to build the program and in year two at the helm, helped the Bison post a winning record at 16-14, Bucknell's first winning season since 2008-09. The Bison earned a bid into the Women's Basketball Invitational postseason tournament for the first time in program history. The rise kept coming in 2014-15 as the Bison finished with an 18-12 record, the most wins for the Bison since 2007.

Much of Roussell's success at Bucknell was a result of his ability to quickly develop talent and meld it with the team's veteran players. Under this guidance, Bucknell earned three Patriot League Rookie of the Year award winners from 2014-16 and one of those student-athletes - Claire DeBoer - went on to earn Patriot League Player of the Year accolades in 2016-17.

Prior to his time at Bucknell, Roussell spent eight years (2004-2012) as the highly successful head coach at the University of Chicago where he compiled a 161-50 (.763) record, including a 52-5 mark with a 43-game regular season winning streak over his last two seasons leading the Maroons.

Roussell is a 2001 graduate of the University of Iowa, where he double-majored in journalism/mass communications and political science. In 2002 he began a two-year stint as a graduate assistant women's basketball coach at Minnesota State. In addition to his coaching duties, he completed a master's degree in sports administration.

Roussell and his wife, Molly, have an 12-year-old son, Riley, a eight-year-old daughter, Kelsey, and a five-year-old daughter, Kendall.



## ***ASSISTANT COACHES***



***JEANINE RADICE  
ASSISTANT COACH  
FOURTH SEASON (FORDHAM '89)***



***KA'LIA JOHNSON  
ASSISTANT COACH  
FIRST SEASON (DUKE '15)***



***BRITTANY PINKNEY  
ASSISTANT COACH  
FOURTH SEASON (VCU '08)***

## ***SUPPORT STAFF***



***JANELLE SILVER-MARTIN  
DIRECTOR OF OPERATIONS  
SECOND SEASON (MORGAN STATE '16)***



***JOHN STUDER  
DIR. OF PROGRAM DEVELOPMENT  
FOURTH SEASON (ILLINOIS '81)***



# GRACE TOWNSEND

**JUNIOR**  
**5-5 / GUARD**  
**MIDLOTHIAN, VA.**  
**JAMES RIVER**

# 1

## GAME-BY-GAME STATISTICS

### TOP PERFORMANCES

#### POINTS

Season ..... 14 (at Liberty, 11/7/22)  
 Career ..... 25 (vs. Fordham, 2/23/22)

#### REBOUNDS

Season ..... 8 (at Liberty, 11/7/22)  
 Career ..... 13 (vs. Fordham, 2/23/22)

#### ASSISTS

Season ..... 6 (vs. Mount St. Mary's, 11/10/22)  
 Career ..... 10 (at Ohio, 12/4/21)

#### BLOCKS

Season ..... 1 (at Liberty, 11/7/22)  
 Career ..... 1 (5x, last at Liberty, 11/7/22)

#### STEALS

Season ..... 2 (vs. Mount St. Mary's, 11/10/22)  
 Career ..... 6 (at Duquesne, 2/16/22)

#### FIELD GOALS MADE

Season ..... 3 (at Liberty, 11/7/22)  
 Career ..... 10 (vs. Fordham, 2/23/22)

#### FIELD GOALS ATTEMPTED

Season ..... 6 (at Liberty, 11/7/22)  
 Career ..... 14 (2x, last vs. Fordham, 2/23/22)

#### FREE-THROWS MADE

Season ..... 7 (at Liberty, 11/7/22)  
 Career ..... 7 (at Liberty, 11/7/22)

#### FREE-THROWS ATTEMPTED

Season ..... 8 (at Liberty, 11/7/22)  
 Career ..... 8 (2x last at Liberty, 11/7/22)

#### 3-POINT FIELD GOALS MADE

Season ..... 1 (at Liberty, 11/7/22)  
 Career ..... 3 (at GW, 1/5/22)

#### 3-POINT FIELD GOALS ATTEMPTED

Season ..... 3 (at Liberty, 11/7/22)  
 Career ..... 5 (3x, last vs. VCU, 2/2/22)

#### MINUTES

Season ..... 34 (at Liberty, 11/7/22)  
 Career ..... 38 (vs. UMass, 1/15/22)

#### #1 TOWNSEND, Grace

				Total		3-Pointers		Free throws		Rebounds											
Opponent	Date	GS	MIN	FG-FGA	PCT	3FG-3FGA	PCT	FT-FTA	PCT	OFF	DEF	TOT	AVG	PF	A	TO	BLK	STL	PTS	AVG	
at Liberty	11/07/2022	*	33:58	3-6	.500	1-3	.333	7-8	.875	1	7	8	8.0	2	3	5	1	1	14	14.0	
Mount St. Mary's	11/10/2022	*	23:11	2-5	.400	0-0	.000	2-4	.500	0	4	4	6.0	0	6	1	0	2	6	10.0	
Totals			2 57:10	5-11	.455	1-3	.333	9-12	.750	1	11	12	6.0	2	9	6	1	3	20	10.0	

#### Player Averages

Games Played	Minutes/game	Points/game	FG Pct	3FG Pct	FT Pct	Rebounds/game	Assists/game	Turnovers/game	Assist/Turnover ratio	Steals/game	Blocks/game
2	28.6	10.0	45.5	33.3	75.0	6.0	4.5	3.0	1.5	1.5	0.5

## AS A JUNIOR

- Led all players with eight rebounds, as the shortest person on the court against Liberty.
- Posted 13 points, eight rebounds, and three assists in the Spiders 21-point win over Liberty.
- Chipped in six helpers, four assists and six points against Mount St. Mary's

## CAREER SUMMARY

			Field Goals		3-Point		F-Throws		Rebounds			PF-FO		A		BLK		STL		Scoring	
SEASON	TEAM	GP-GS	MIN/AVG	FG-FA	FG%	3FG-3FA	3FG%	FT-FTA	FT%	OFF	DEF	TOT	AVG	PF	FO	A	TO	BLK	STL	PTS	AVG
2020-21	UR	22-0	442/20.1	44-106	.415	11-25	.440	45-60	.750	17	60	77	3.5	35-0	73	58	1	22	144	6.5	
2021-22	UR	30-29	942/31.4	109-244	.447	18-69	.261	77-99	.778	17	135	152	5.1	58-0	158	97	3	37	313	10.4	
2022-23	UR	2-2	57/28.6	5-11	.455	1-3	.333	9-12	.750	1	11	12	6.0	2-0	9	6	1	3	20	10.0	
TOTAL			54-31	1442/26.7	158-361	.438	30-97	.309	131-171	.766	35	206	241	4.5	95-0	240	161	5	62	477	8.8



# SYDNEY BOONE

**SOPHOMORE**  
**5-8 / GUARD**  
**RICHMOND, VA.**  
**HIGHLAND SPRINGS**

# 2

## TOP PERFORMANCES

### POINTS

Season ..... 2 (vs. Mount St. Mary's, 11/10/22)  
 Career ..... 12 (at Hampton, 11/13/21)

### REBOUNDS

Season .....  
 Career ..... 5 (vs. Dayton, 1/26/22)

### ASSISTS

Season .....  
 Career ..... 4 (at Hampton, 11/13/21)

### BLOCKS

Season .....  
 Career ..... 1 (at GW, 1/5/22)

### STEALS

Season ..... 1 (vs. Mount St. Mary's, 11/10/22)  
 Career ..... 2 (vs. W&M, 12/12/21)

### FIELD GOALS MADE

Season ..... 1 (vs. Mount St. Mary's, 11/10/22)  
 Career ..... 4 (at Hampton, 11/13/21)

### FIELD GOALS ATTEMPTED

Season ..... 1 (vs. Mount St. Mary's, 11/10/22)  
 Career ..... 8 (at Hampton, 11/13/21)

### FREE-THROWS MADE

Season .....  
 Career ..... 4 (vs. UMES, 12/1/21)

### FREE-THROWS ATTEMPTED

Season .....  
 Career ..... 4 (vs. UMES, 12/1/21)

### 3-POINT FIELD GOALS MADE

Season .....  
 Career ..... 3 (at Hampton, 11/13/21)

### 3-POINT FIELD GOALS ATTEMPTED

Season .....  
 Career ..... 5 (at Hampton, 11/13/21)

### MINUTES

Season ..... 6 (vs. Mount St. Mary's, 11/10/22)  
 Career ..... 15 (at Hampton, 11/13/21)

## GAME-BY-GAME STATISTICS

Opponent	Date	GS	MIN	Total		3-Pointers		Free throws		Rebounds				PF		A		BLK		STL		PTS	
				FG-FGA	PCT	3FG-3FGA	PCT	FT-FTA	PCT	OFF	DEF	TOT	AVG	PF	A	TO	BLK	STL	PTS	AVG			
Mount St. Mary's	11/10/2022		05:50	1-1	1.000	0-0	.000	0-0	.000	0	0	0	0.0	0	0	0	0	1	2	2.0			
Totals		0	05:50	1-1	1.000	0-0	.000	0-0	.000	0	0	0	0.0	0	0	0	1	2	2.0				

### Player Averages

Games Played	Minutes/ game	Points/ game	FG Pct	3FG Pct	FT Pct	Rebounds/ game	Assists/ game	Turnovers/ game	Assist/Turnover ratio	Steals/ game	Blocks/ game
1	5.8	2.0	100.0	0.0	0.0	0.0	0.0	0.0	0.0	1.0	0.0

## AS A SOPHOMORE

- Saw the court for the first time this season against Mount St. Mary's, scoring two points and collecting a steal.

## CAREER SUMMARY

				Field Goals		3-Point		F-Throws		Rebounds								Scoring		
SEASON	TEAM	GP-GS	MIN/AVG	FG-FGA	FG%	3FG-3FGA	3FG%	FT-FTA	FT%	OFF	DEF	TOT	AVG	PF-FO	A	TO	BLK	STL	PTS	AVG
2021-22	UR	28-0	212/7.6	27-76	.355	16-39	.410	12-15	.800	4	33	37	1.3	20-0	21	32	2	6	82	2.9
2022-23	UR	1-0	6/5.8	1-1	1.000	0-0	.000	0-0	.000	0	0	0	0.0	0-0	0	0	0	1	2	2.0
TOTAL		29-0	218/7.5	28-77	.364	16-39	.410	12-15	.800	4	33	37	1.3	20-0	21	32	2	7	84	2.9



**JADA GREEN**

**FRESHMAN  
6-1 / FORWARD  
PARKLAND, FLA.  
ST. THOMAS AQUINAS**

**4**

**TOP PERFORMANCES**

**POINTS**

Season .....  
Career .....

**REBOUNDS**

Season .....  
Career .....

**ASSISTS**

Season .....  
Career .....

**BLOCKS**

Season .....  
Career .....

**STEALS**

Season .....  
Career .....

**FIELD GOALS MADE**

Season .....  
Career .....

**FIELD GOALS ATTEMPTED**

Season .....  
Career .....

**FREE-THROWS MADE**

Season .....  
Career .....

**FREE-THROWS ATTEMPTED**

Season .....  
Career .....

**3-POINT FIELD GOALS MADE**

Season .....  
Career .....

**3-POINT FIELD GOALS ATTEMPTED**

Season .....  
Career .....

**MINUTES**

Season .....  
Career .....

**GAME-BY-GAME STATISTICS**

-Will miss the 2022-23 season due to knee surgery prior to the season.

**PREP CAREER HIGHLIGHTS**

- Florida 6A State Champion
- Led her high school team with 9.6 boards per game her junior year
- Broward All-County 6A Second-Team
- USA Today High School Sports Southeast Florida Nominee
- McDonalds All-American Nominee

**CAREER SUMMARY**





# CAYLA WILLIAMS

**SOPHOMORE**  
**6-0 / FORWARD**  
**GAINESVILLE, VA.**  
**EPISCOPAL**

# 11

## TOP PERFORMANCES

### POINTS

Season ..... 8 (vs. Mount St. Mary's, 11/10/22)  
 Career ..... 11 (vs. W&M, 12/12/21)

### REBOUNDS

Season ..... 3 (vs. Mount St. Mary's, 11/10/22)  
 Career ..... 7 (at Longwood, 12/15/21)

### ASSISTS

Season .....  
 Career ..... 3 (vs. UMBC, 11/21/21)

### BLOCKS

Season .....  
 Career ..... 2 (5x, last vs. VCU, 2/2/22)

### STEALS

Season ..... 1 (at Liberty, 11/7/22)  
 Career ..... 3 (vs. UMBC, 11/21/21)

### FIELD GOALS MADE

Season ..... 3 (vs. Mount St. Mary's, 11/10/22)  
 Career ..... 4 (vs. W&M, 12/12/21)

### FIELD GOALS ATTEMPTED

Season ..... 5 (vs. Mount St. Mary's, 11/10/22)  
 Career ..... 7 (3x, last vs. Coppin State, 12/29/21)

### FREE-THROWS MADE

Season ..... 2 (at Liberty, 11/7/22)  
 Career ..... 2 (at Liberty, 11/7/22)

### FREE-THROWS ATTEMPTED

Season ..... 2 (at Liberty, 11/7/22)  
 Career ..... 2 (8x, last at Liberty, 11/7/22)

### 3-POINT FIELD GOALS MADE

Season ..... 2 (vs. Mount St. Mary's, 11/10/22)  
 Career ..... 3 (vs. VCU, 2/2/22)

### 3-POINT FIELD GOALS ATTEMPTED

Season ..... 3 (vs. Mount St. Mary's, 11/10/22)  
 Career ..... 4 (2x, last vs. Coppin State, 12/29/21)

### MINUTES

Season ..... 14 (vs. Mount St. Mary's, 11/10/22)  
 Career ..... 27 (vs. Long Beach St., 11/26/21)

## GAME-BY-GAME STATISTICS

#11 WILLIAMS, Cayla

				Total		3-Pointers		Free throws		Rebounds											
Opponent	Date	GS	MIN	FG-FGA	PCT	3FG-3FGA	PCT	FT-FTA	PCT	OFF	DEF	TOT	AVG	PF	A	TO	BLK	STL	PTS	AVG	
at Liberty	11/07/2022	*	18:32	0-1	.000	0-1	.000	2-2	1.000	0	1	1	1.0	2	0	1	0	1	2	2.0	
Mount St. Mary's	11/10/2022	*	14:10	3-5	.600	2-3	.667	0-0	.000	1	2	3	2.0	2	0	4	0	0	8	5.0	
Totals		2	32:42	3-6	.500	2-4	.500	2-2	1.000	1	3	4	2.0	4	0	5	0	1	10	5.0	

Player Averages

Games Played	Minutes/game	Points/game	FG Pct	3FG Pct	FT Pct	Rebounds/game	Assists/game	Turnovers/game	Assist/Turnover ratio	Steals/game	Blocks/game
2	16.4	5.0	50.0	50.0	100.0	2.0	0.0	2.5	0.0	0.5	0.0

## AS A SOPHOMORE

- Limited Liberty's red-shirt senior center Mya Berkman just eight points and seven rebounds, as a career double-figure scorer.
- Went 2-of-3 from long range against Mount St. Mary's

## CAREER SUMMARY

		Field Goals		3-Point		F-Throws		Rebounds									Scoring			
SEASON	TEAM	GP-GS	MIN/AVG	FG-FGA	FG%	3FG-3FGA	3FG%	FT-FTA	FT%	OFF	DEF	TOT	AVG	PF-FO	A	TO	BLK	STL	PTS	AVG
2021-22	UR	29-16	435/15.0	34-80	.425	14-43	.326	5-13	.385	20	51	71	2.4	71-3	14	19	16	8	87	3.0
2022-23	UR	2-2	33/16.4	3-6	.500	2-4	.500	2-2	1.000	1	3	4	2.0	4-0	0	5	0	1	10	5.0
TOTAL		31-18	468/15.1	37-86	.430	16-47	.340	7-15	.467	21	54	75	2.4	75-3	14	24	16	9	97	3.1



# TORIN ROGERS

**FRESHMAN**  
**6-1 / GUARD**  
**BRASSTOWN, N.C.**  
**MURPHY**

# 13

## TOP PERFORMANCES

### POINTS

Season .....  
 Career .....

### REBOUNDS

Season ..... 3 (vs. Mount St. Mary's, 11/10/22)  
 Career ..... 3 (vs. Mount St. Mary's, 11/10/22)

### ASSISTS

Season .....  
 Career .....

### BLOCKS

Season .....  
 Career .....

### STEALS

Season .....  
 Career .....

### FIELD GOALS MADE

Season .....  
 Career .....

### FIELD GOALS ATTEMPTED

Season ..... 1 (at Liberty, 11/7/22)  
 Career ..... 1 (at Liberty, 11/7/22)

### FREE-THROWS MADE

Season .....  
 Career .....

### FREE-THROWS ATTEMPTED

Season .....  
 Career .....

### 3-POINT FIELD GOALS MADE

Season .....  
 Career .....

### 3-POINT FIELD GOALS ATTEMPTED

Season .....  
 Career .....

### MINUTES

Season ..... 10 (vs. Mount St. Mary's, 11/10/22)  
 Career ..... 10 (vs. Mount St. Mary's, 11/10/22)

## GAME-BY-GAME STATISTICS

### #13 ROGERS, Torin

				Total		3-Pointers		Free throws		Rebounds															
Opponent	Date	GS	MIN	FG-FGA	PCT	3FG-3FGA	PCT	FT-FTA	PCT	OFF	DEF	TOT	AVG	PF	A	TO	BLK	STL	PTS	AVG					
at Liberty	11/07/2022		02:03	0-1	.000	0-0	.000	0-0	.000	0	1	1	1.0	0	0	0	0	0	0	0					
Mount St. Mary's	11/10/2022		08:53	0-0	.000	0-0	.000	0-0	.000	0	3	3	2.0	1	0	3	0	0	0	0					
Totals		0	10:56	0-1	.000	0-0	.000	0-0	.000	0	4	4	2.0	1	0	3	0	0	0	0					

### Player Averages

Games Played	Minutes/game	Points/game	FG Pct	3FG Pct	FT Pct	Rebounds/game	Assists/game	Turnovers/game	Assist/Turnover ratio	Steals/game	Blocks/game
2	5.5	0.0	0.0	0.0	0.0	2.0	0.0	1.5	0.0	0.0	0.0

## AS A FRESHMAN...

- Played in her first collegiate game at Liberty, collecting a rebound
- Against Mount St. Mary's, pulling down three boards

## CAREER SUMMARY

					Field Goals		3-Point		F-Throws		Rebounds								Scoring							
SEASON	TEAM	GP	GS	MIN	AVG	FG	F-GA	FG%	3FG	3-GA	3FG%	FT	F-TA	FT%	OFF	DEF	TOT	AVG	PF	F	O	TO	BLK	STL	PTS	AVG
2022-23	UR	2-0		11/5.5		0-1		.000	0-0		.000	0-0		.000	0	4	4	2.0	1-0	0	3	0	0	0	0	0.0
TOTAL		2-0		11/5.5		0-1		.000	0-0		.000	0-0		.000	0	4	4	2.0	1-0	0	3	0	0	0	0	0.0

**ADDIE BUDNIK**

**JUNIOR**  
**6-2 / FORWARD**  
**HIGHLAND PARK, ILL.**  
**HIGHLAND PARK**

**20****GAME-BY-GAME STATISTICS****TOP PERFORMANCES****POINTS**

Season ..... 21 (at Liberty, 11/7/22)  
 Career ..... 23 (2x, last vs. UMBC, 11/21/21)

**REBOUNDS**

Season ..... 7 (at Liberty, 11/7/22)  
 Career ..... 10 (vs. Charlotte, 11/9/21)

**ASSISTS**

Season ..... 5 (vs. Mount St. Mary's, 11/10/22)  
 Career ..... 6 (vs. Rhode Island, 2/19/22)

**BLOCKS**

Season ..... 1, (vs. Mount St. Mary's, 11/10/22)  
 Career ..... 7 (2x, last vs. UMBC, 11/21/21)

**STEALS**

Season ..... 4 (vs. Mount St. Mary's, 11/10/22)  
 Career ..... 4 (2x, last. Mount St. Mary's, 11/10/22)

**FIELD GOALS MADE**

Season ..... 8 (at Liberty, 11/7/22)  
 Career ..... 9 (vs. UMBC, 11/21/21)

**FIELD GOALS ATTEMPTED**

Season ..... 14 (at Liberty, 11/7/22)  
 Career ..... 16 (at Saint Louis, 1/30/22)

**FREE-THROWS MADE**

Season ..... 4 (at Liberty, 11/7/22)  
 Career ..... 6 (2x, last at George Mason, 1/19/22)

**FREE-THROWS ATTEMPTED**

Season ..... 4 (at Liberty, 11/7/22)  
 Career ..... 9 (at Duquesne, 2/16/22)

**3-POINT FIELD GOALS MADE**

Season ..... 2 (vs. Mount St. Mary's, 11/10/22)  
 Career ..... 4 (3x, last vs. UMass, 1/15/22)

**3-POINT FIELD GOALS ATTEMPTED**

Season ..... 3, (vs. Mount St. Mary's, 11/10/22)  
 Career ..... 8 (3x, last vs. VCU, 2/2/22)

**MINUTES**

Season ..... 34 (at Liberty, 11/7/22)  
 Career ..... 44 (vs. SLU, 3/12/21)

**#20 BUDNIK, Addie**

				Total		3-Pointers		Free throws		Rebounds															
Opponent	Date	GS	MIN	FG-FGA	PCT	3FG-3FGA	PCT	FT-FTA	PCT	OFF	DEF	TOT	AVG	PF	A	TO	BLK	STL	PTS	AVG					
at Liberty	11/07/2022	*	33:29	8-14	.571	1-2	.500	4-4	1.000	2	5	7	7.0	2	3	0	2	21	21.0						
Mount St. Mary's	11/10/2022	*	27:27	6-8	.750	2-3	.667	2-2	1.000	2	4	6	6.5	1	5	1	1	4	16	18.5					
Totals		2	60:56	14-22	.636	3-5	.600	6-6	1.000	4	9	13	6.5	3	8	4	1	6	37	18.5					

**Player Averages**

Games Played	Minutes/ game	Points/ game	FG Pct	3FG Pct	FT Pct	Rebounds/ game	Assists/ game	Turnovers/ game	Assist/Turnover ratio	Steals/ game	Blocks/ game
2	30.5	18.5	63.6	60.0	100.0	6.5	4.0	2.0	2.0	3.0	0.5

**AS A JUNIOR**

- Preseason A-10 First Team Selection
- Named to the 2023 Becky Hammon Mid-Major Player of the Year, presented by Her Hoop Stats
- Katrina McClain Award, to honor the best power forward (10/20), as announced by the Naismith Memorial Basketball Hall of Fame and the Women's Basketball Coaches Association
- Opened the season posting 21 points, two points shy of her career high, 7 rebounds and 3 assists at Liberty.

**CAREER SUMMARY**

SEASON	TEAM	GP-GS	MIN/AVG	Field Goals		3-Point	F-Throws		Rebounds				Scoring			
				FG-FGA	FG%		FT-FTA	FT%	OFF	DEF	TOT	AVG	PF-FO	A	TO	BLK
2020-21	UR	22-18	753/34.2	94-194	.485	22-68	.324	40-45	.889	32	79	111	5.0	43-0	41	48
2021-22	UR	30-29	1010/33.7	155-311	.498	43-119	.361	54-80	.675	56	120	176	5.9	59-0	66	60
2022-23	UR	2-2	61/30.5	14-22	.636	3-5	.600	6-6	1.000	4	9	13	6.5	3-0	8	4
<b>TOTAL</b>		<b>54-49</b>	<b>1825/33.8</b>	<b>263-527</b>	<b>.499</b>	<b>68-192</b>	<b>.354</b>	<b>100-131</b>	<b>.763</b>	<b>92</b>	<b>208</b>	<b>300</b>	<b>5.6</b>	<b>105-0</b>	<b>115</b>	<b>112</b>



# KYLEE LEWANDOWSKI

**JUNIOR**  
**6-1 / GUARD**  
**PITTSBURGH, PA.**  
**NORTH CATHOLIC**

# 21

## TOP PERFORMANCES

### POINTS

Season .....  
 Career ..... 8 (3x, last vs. W&M, 12/12/21)

### REBOUNDS

Season ..... 2, (vs. Mount St. Mary's, 11/10/22)  
 Career ..... 11 (at Hampton, 11/13/21)

### ASSISTS

Season .....  
 Career ..... 2 (at Ohio, 12/4/21)

### BLOCKS

Season .....  
 Career ..... 1 (4x, last at Ohio, 12/4/21)

### STEALS

Season .....  
 Career ..... 2 (2x, last @ George Mason, 1/31/21)

### FIELD GOALS MADE

Season .....  
 Career ..... 3 (3x, last vs. W&M, 12/12/21)

### FIELD GOALS ATTEMPTED

Season ..... 2 (vs. Mount St. Mary's, 11/10/22)  
 Career ..... 9 (at Ohio, 12/4/21)

### FREE-THROWS MADE

Season .....  
 Career ..... 2 (vs. La Salle, 2/20/21)

### FREE-THROWS ATTEMPTED

Season .....  
 Career ..... 2 (4x, last vs. Dayton, 1/26/22)

### 3-POINT FIELD GOALS MADE

Season .....  
 Career ..... 2 (5x, last vs. W&M, 12/12/21)

### 3-POINT FIELD GOALS ATTEMPTED

Season ..... 1 (vs. Mount St. Mary's, 11/10/22)  
 Career ..... 7 (vs. UMEs, 12/1/21)

### MINUTES

Season ..... 9 (vs. Mount St. Mary's, 11/10/22)  
 Career ..... 23 (at Ohio, 12/4/21)

## GAME-BY-GAME STATISTICS

#21 LEWANDOWSKI, Kylee

				Total		3-Pointers		Free throws		Rebounds											
Opponent	Date	GS	MIN	FG-FGA	PCT	3FG-3FGA	PCT	FT-FTA	PCT	OFF	DEF	TOT	AVG	PF	A	TO	BLK	STL	PTS	AVG	
at Liberty	11/07/2022		01:46	0-0	.000	0-0	.000	0-0	.000	0	0	0	0.0	0	0	0	0	0	0	0.0	
Mount St. Mary's	11/10/2022		08:57	0-2	.000	0-1	.000	0-0	.000	0	2	2	1.0	0	0	1	0	0	0	0.0	
Totals		0	10:42	0-2	.000	0-1	.000	0-0	.000	0	2	2	1.0	0	0	1	0	0	0	0.0	

Player Averages

Games Played	Minutes/ game	Points/ game	FG Pct	3FG Pct	FT Pct	Rebounds/ game	Assists/ game	Turnovers/ game	Assist/Turnover ratio	Steals/ game	Blocks/ game
2	5.4	0.0	0.0	0.0	0.0	1.0	0.0	0.5	0.0	0.0	0.0

## AS A JUNIOR

- Collected two rebounds against Mount St. Mary's

## CAREER SUMMARY

SEASON	TEAM	GP-GS	MIN/AVG	Field Goals		3-Point		F-Throws		Rebounds				Scoring			
				FG-FGA	FG%	3FG-3FGA	3FG%	FT-FTA	FT%	OFF	DEF	TOT	AVG	PF-FO	A	TO	BLK
2020-21	UR	10-0	48/4.8	3-14	.214	2-8	.250	2-2	1.000	2	12	14	1.4	3-0	2	3	0
2021-22	UR	24-0	218/9.1	24-72	.333	18-56	.321	1-6	.167	3	36	39	1.6	9-0	6	8	4
2022-23	UR	2-0	11/5.4	0-2	.000	0-1	.000	0-0	.000	0	2	2	1.0	0-0	0	1	0
<b>TOTAL</b>		<b>36-0</b>	<b>277/7.7</b>	<b>27-88</b>	<b>.307</b>	<b>20-65</b>	<b>.308</b>	<b>3-8</b>	<b>.375</b>	<b>5</b>	<b>50</b>	<b>55</b>	<b>1.5</b>	<b>12-0</b>	<b>8</b>	<b>12</b>	<b>4</b>





# RACHEL ULLSTROM

**FRESHMAN**  
**6-1 | GUARD**  
**AUBURN, MASS.**  
**MARIANAPOLIS PREP**

# 22

## TOP PERFORMANCES

### POINTS

Season ..... 13 (vs. Mount St. Mary's, 11/10/22)  
 Career ..... 13 (vs. Mount St. Mary's, 11/10/22)

### REBOUNDS

Season ..... 3 (vs. Mount St. Mary's, 11/10/22)  
 Career ..... 3 (vs. Mount St. Mary's, 11/10/22)

### ASSISTS

Season ..... 1 (at Liberty, 11/7/22)  
 Career .....

### BLOCKS

Season .....  
 Career .....

### STEALS

Season ..... 3 (vs. Mount St. Mary's, 11/10/22)  
 Career ..... 3 (vs. Mount St. Mary's, 11/10/22)

### FIELD GOALS MADE

Season ..... 6 (vs. Mount St. Mary's, 11/10/22)  
 Career ..... 6 (vs. Mount St. Mary's, 11/10/22)

### FIELD GOALS ATTEMPTED

Season ..... 12 (vs. Mount St. Mary's, 11/10/22)  
 Career ..... 12 (vs. Mount St. Mary's, 11/10/22)

### FREE-THROWS MADE

Season ..... 1 (vs. Mount St. Mary's, 11/10/22)  
 Career ..... 1 (vs. Mount St. Mary's, 11/10/22)

### FREE-THROWS ATTEMPTED

Season ..... 1 (vs. Mount St. Mary's, 11/10/22)  
 Career ..... 1 (vs. Mount St. Mary's, 11/10/22)

### 3-POINT FIELD GOALS MADE

Season .....  
 Career .....

### 3-POINT FIELD GOALS ATTEMPTED

Season ..... 3 (vs. Mount St. Mary's, 11/10/22)  
 Career ..... 3 (vs. Mount St. Mary's, 11/10/22)

### MINUTES

Season ..... 16 (vs. Mount St. Mary's, 11/10/22)  
 Career ..... 16 (vs. Mount St. Mary's, 11/10/22)

## GAME-BY-GAME STATISTICS

#22 ULLSTROM, Rachel

				Total		3-Pointers		Free throws		Rebounds											
Opponent	Date	GS	MIN	FG-FGA	PCT	3FG-3FGA	PCT	FT-FTA	PCT	OFF	DEF	TOT	AVG	PF	A	TO	BLK	STL	PTS	AVG	
at Liberty	11/07/2022		11:51	0-0	.000	0-0	.000	0-0	.000	0	1	1	1.0	0	1	1	0	0	0	0.0	
Mount St. Mary's	11/10/2022		16:51	6-12	.500	0-3	.000	1-1	1.000	3	2	5	3.0	0	0	1	0	3	13	6.5	
Totals		0	28:42	6-12	.500	0-3	.000	1-1	1.000	3	3	6	3.0	0	1	2	0	3	13	6.5	

Player Averages

Games Played	Minutes/ game	Points/ game	FG Pct	3FG Pct	FT Pct	Rebounds/ game	Assists/ game	Turnovers/ game	Assist/Turnover ratio	Steals/ game	Blocks/ game
2	14.3	6.5	50.0	0.0	100.0	3.0	0.5	1.0	0.5	1.5	0.0

## AS A FRESHMAN ...

- Tallied her first collegiate points against Mount St. Mary's, chipping in 13 points, five rebounds and three steals in the win.

## CAREER SUMMARY

				Field Goals		3-Point		F-Throws		Rebounds				Scoring	
SEASON	TEAM	GP-GS	MIN/AVG	FG-FGA	FG%	3FG-3FGA	3FG%	FT-FTA	FT%	OFF	DEF	TOT	AVG	PF-FO	A TO
2022-23	UR	2-0	29/14.3	6-12	.500	0-3	.000	1-1	1.000	3	3	6	3.0	0-0	1 2
<b>TOTAL</b>		<b>2-0</b>	<b>29/14.3</b>	<b>6-12</b>	<b>.500</b>	<b>0-3</b>	<b>.000</b>	<b>1-1</b>	<b>1.000</b>	<b>3</b>	<b>3</b>	<b>6</b>	<b>3.0</b>	<b>0-0</b>	<b>1 2</b>



# EMILIJA KRISTA GRAVA

**GRADUATE STUDENT**  
**6-2 / FORWARD**  
**LIGATNE, LATIVA**  
**WAGNER**

# 24

**LIEPAJAS PAPIRISK SSS**

## GAME-BY-GAME STATISTICS

### TOP PERFORMANCES

#### POINTS

Season ..... 8 (vs. Mount St. Mary's, 11/10/22)  
 Career ..... 45 (vs. St. Peters, 11/13/19)

#### REBOUNDS

Season ..... 5 (vs. Mount St. Mary's, 11/10/22)  
 Career ..... 12 (at Central Conn. St, 2/19/22)

#### ASSISTS

Season ..... 2 (vs. Mount St. Mary's, 11/10/22)  
 Career ..... 5 (at Bryant, 1/6/22)

#### BLOCKS

Season .....  
 Career ..... 3 (2x, last at Mount St. Mary's, 2/10/22)

#### STEALS

Season .....  
 Career ..... 3 (St. Francis Brooklyn, 2/5/21)

#### FIELD GOALS MADE

Season ..... 4 (at Liberty, 11/7/22)  
 Career ..... 15 (vs. Mount St. Mary's, 3/5/21)

#### FIELD GOALS ATTEMPTED

Season ..... 4 (at Liberty, 11/7/22)  
 Career ..... 26 (vs. Mount St. Mary's, 3/5/21)

#### FREE-THROWS MADE

Season ..... 4 (vs. Mount St. Mary's, 11/10/22)  
 Career ..... 10 (at Brown, 11/20/21)

#### FREE-THROWS ATTEMPTED

Season ..... 4 (vs. Mount St. Mary's, 11/10/22)  
 Career ..... 10 (at Brown, 11/20/21)

#### 3-POINT FIELD GOALS MADE

Season ..... 1 (at Liberty, 11/7/22)  
 Career ..... 2 (vs. Rider, 12/07/21)

#### 3-POINT FIELD GOALS ATTEMPTED

Season ..... 2 (at Liberty, 11/7/22)  
 Career ..... 3 (2x, last vs. Sacred Heart, 2/17/22)

#### MINUTES

Season ..... 19 (vs. Mount St. Mary's, 11/10/22)  
 Career ..... 38 (at Seton Hall, 12/11/20)

#24 KRISTA GRAVA, Emilija

				Total		3-Pointers		Free throws		Rebounds										
Opponent	Date	GS	MIN	FG-FGA	PCT	3FG-3FGA	PCT	FT-FTA	PCT	OFF	DEF	TOT	AVG	PF	A	TO	BLK	STL	PTS	AVG
at Liberty	11/07/2022		14:36	3-4	.750	1-2	.500	0-0	.000	0	0	0	0.0	4	0	1	0	0	7	7.0
Mount St. Mary's	11/10/2022		18:48	2-3	.667	0-1	.000	4-4	1.000	2	3	5	2.5	1	2	1	0	0	8	7.5
Totals		0	33:24	5-7	.714	1-3	.333	4-4	1.000	2	3	5	2.5	5	2	2	0	0	15	7.5

Player Averages

Games Played	Minutes/game	Points/game	FG Pct	3FG Pct	FT Pct	Rebounds/game	Assists/game	Turnovers/game	Assist/Turnover ratio	Steals/game	Blocks/game
2	16.7	7.5	71.4	33.3	100.0	2.5	1.0	1.0	1.0	0.0	0.0

## AT RICHMOND...

- Scored five-straight points (a three-pointer and a layup) to stop a 9-1 run by Liberty in the first quarter before getting into foul trouble.

## HONORS WHILE AT WAGNER (2018-22)

- Northeast Conference (NEC) Preseason All-NEC Team (2020-21)
- Northeast Conference (NEC) First Team (2019-20, 2020-21, 2021-22)
- First Seahawk in program history to be named to three consecutive All-Northeast Conference (NEC) First Teams.
- Metropolitan Basketball Writers' Association (MBWA) Second Team (2020-21)
- Metropolitan Basketball Writers' Association (MBWA) Third Team (2019-20, 2021-22)
- Northeast Conference (NEC) All-Rookie Team (2018-19)
- Northeast Conference (NEC) Player of the Week (Nov. 18, 2019, Jan. 29, 2020, Feb. 8, 2021, Mar. 8, 2021, Dec. 13, 2021, Feb. 7, 2022)
- Northeast Conference (NEC) Rookie of the Week (Nov. 19, 2018)
- Northeast Conference (NEC) Winter Academic Honor Roll (2020-21; 2021-22)
- Became the 25th member of the Wagner women's basketball 1,000 Point Club (1,311)
- Finished her Wagner career with 1,311 career points (12th all-time); 13.4 points per game (12th all-time) 567 rebounds, and 549 field goals made (7th all-time).

## CAREER SUMMARY

				Field Goals		3-Point		F-Throws		Rebounds								Scoring		
SEASON	TEAM	GP-GS	MIN/AVG	FG-FGA	FG%	3FG-3FGA	3FG%	FT-FTA	FT%	OFF	DEF	TOT	AVG	PF-FO	A	TO	BLK	STL	PTS	AVG
2018-19	WC	21-17	577/27.5	92-220	.418	6-23	.261	23-34	.676	52	62	114	5.4	69-21	21	54	16	20	213	10.1
2019-20	WC	29-29	890/30.7	193-414	.466	4-16	.250	64-83	.771	78	96	174	6.0	73-1	27	74	23	27	454	15.7
2020-21	WC	19-19	578/30.4	113-243	.465	5-20	.250	36-49	.735	40	65	105	5.5	39-1	17	45	11	17	267	14.1
2021-22	WC	29-27	895/30.8	151-343	.440	11-39	.282	64-78	.821	78	96	174	6.0	61-0	31	51	24	13	377	13.0
2022-23	UR	2-0	33/16.7	5-7	.714	1-3	.333	4-4	1.000	2	3	5	2.5	5-0	2	2	0	0	15	7.5
TOTAL FOR UR		2-0	33/16.7	5-7	.714	1-3	.333	4-4	1.000	2	3	5	2.5	5-0	2	2	0	0	15	7.5
TOTAL		100-92	2973/29.7	554-1227	.452	27-101	.267	191-248	.770	250	322	572	5.7	247-4	98	226	74	77	1326	13.3

**KATIE HILL**

**SOPHOMORE**  
**6-0 / GUARD**  
**COLTS NECK, N.J.**  
**SAINT JOHN VIANNEY**

**25****TOP PERFORMANCES****POINTS**

Season ..... 12 (vs. Mount St. Mary's, 11/10/22)  
 Career ..... 13 (vs. Davidson, 2/9/22)

**REBOUNDS**

Season ..... 4 (vs. Mount St. Mary's, 11/10/22)  
 Career ..... 7 (at George Mason, 1/19/22)

**ASSISTS**

Season ..... 2 (at Liberty, 11/7/22)  
 Career ..... 2 (2x last at Liberty, 11/7/22)

**BLOCKS**

Season .....  
 Career ..... 1 (4x, last at SJU, 1/12/22)

**STEALS**

Season ..... 2 (at Liberty, 11/7/22)  
 Career ..... 3 (at GW, 1/5/22)

**FIELD GOALS MADE**

Season ..... 3 (vs. Mount St. Mary's, 11/10/22)  
 Career ..... 6 (vs. Davidson, 2/9/22)

**FIELD GOALS ATTEMPTED**

Season ..... 8 (at Liberty, 11/7/22)  
 Career ..... 9 (at SJU, 1/12/22)

**FREE-THROWS MADE**

Season ..... 5 (vs. Mount St. Mary's, 11/10/22)  
 Career ..... 6 (vs. Coppin State, 12/29/21)

**FREE-THROWS ATTEMPTED**

Season ..... 6 (vs. Mount St. Mary's, 11/10/22)  
 Career ..... 8 (vs. Coppin State, 12/29/21)

**3-POINT FIELD GOALS MADE**

Season ..... 2 (at Liberty, 11/7/22)  
 Career ..... 2 (at Liberty, 11/7/22)

**3-POINT FIELD GOALS ATTEMPTED**

Season ..... 4 (at Liberty, 11/7/22)  
 Career ..... 4 (at Liberty, 11/7/22)

**MINUTES**

Season ..... 33 (at Liberty, 11/7/22)  
 Career ..... 33 (at Liberty, 11/7/22)

**GAME-BY-GAME STATISTICS**

Opponent	Date	GS	MIN	Total		3-Pointers		Free throws		Rebounds				PF		A		BLK		STL		PTS		AVG
				FG	PCT	3FG	PCT	FT	PCT	OFF	DEF	TOT	AVG	P	A	T	O	B	L	S	T	P	A	
at Liberty	11/07/2022	*	33:14	2-8	.250	2-4	.500	1-2	.500	0	1	1	1.0	3	2	1	0	2	7	7.0				
Mount St. Mary's	11/10/2022	*	19:36	3-6	.500	1-1	1.000	5-6	.833	1	3	4	2.5	0	0	1	0	1	12	9.5				
<b>Totals</b>			<b>2 52:50</b>	<b>5-14</b>	<b>.357</b>	<b>3-5</b>	<b>.600</b>	<b>6-8</b>	<b>.750</b>	<b>1</b>	<b>4</b>	<b>5</b>	<b>2.5</b>	<b>3</b>	<b>2</b>	<b>2</b>	<b>0</b>	<b>3</b>	<b>19</b>	<b>9.5</b>				

**Player Averages**

Games Played	Minutes/ game	Points/ game	FG Pct	3FG Pct	FT Pct	Rebounds/ game	Assists/ game	Turnovers/ game	Assist/Turnover ratio	Steals/ game	Blocks/ game
2	26.4	9.5	35.7	60.0	75.0	2.5	1.0	1.0	1.0	1.5	0.0

**AS A SOPHOMORE...**

- Tallied 12 points on 3-of-6 shooting, with a three pointer, and five of six from the free throw line, plus pulled down five rebounds.

**AS A FRESHMAN (21-22)**

- Hauled in a career-high seven rebounds along with making her first career 3-pointer during a road win at George Mason  
 - Had a career-high three steals versus George Washington that all came in a span of 1:17 in the third quarter, also scored eight points on 4-of-5 shooting from the field  
 - Posted her first-career double-digit scoring game with 10 points in a season-high 16 minutes of playing time versus Coppin State, went 6-of-8 from the free throw line and added five rebounds  
 - Saw her first collegiate action playing 12 minutes versus William & Mary after missing the first eight games of the season due to injury

**CAREER SUMMARY**

					Field Goals		3-Point		F-Throws		Rebounds								Scoring							
SEASON	TEAM	GP	GS	MIN	AVG	FG	FGA	FG%	3FG	3FGA	3FG%	FT	FTA	FT%	OFF	DEF	TOT	AVG	PF	FO	A	TO	BLK	STL	PTS	AVG
2021-22	UR	19	0	256	13.5	22-52		.423	2-13		.154	15-22		.682	16	27	43	2.3	27-0	10	30	5	6	61	3.2	
2022-23	UR	2	2	53	26.4	5-14		.357	3-5		.600	6-8		.750	1	4	5	2.5	3-0	2	2	0	3	19	9.5	
TOTAL		21	2	309	14.7	27-66		.409	5-18		.278	21-30		.700	17	31	48	2.3	30-0	12	32	5	9	80	3.8	



# ELAINA CHAPMAN

**SENIOR**  
**6-3 / FORWARD**  
**RICHMOND, VA.**  
**TRINITY EPISCOPAL**

# 31

## TOP PERFORMANCES

### POINTS

Season .....  
 Career ..... 18 (vs. George Mason, 1/26/21)

### REBOUNDS

Season .....  
 Career ..... 14 (vs. Navy, 12/2/20)

### ASSISTS

Season .....  
 Career ..... 4 (2x, last @ William & Mary, 12/6/20)

### BLOCKS

Season .....  
 Career ..... 4 (@ Rhode Island, 1/7/20)

### STEALS

Season .....  
 Career ..... 5 (@ George Washington, 1/29/21)

### FIELD GOALS MADE

Season .....  
 Career ..... 7 (vs. George Mason, 1/26/21)

### FIELD GOALS ATTEMPTED

Season .....  
 Career ..... 12 (@ Howard, 12/22/20)

### FREE-THROWS MADE

Season .....  
 Career ..... 4 (4x, last @ George Mason, 1/31/21)

### FREE-THROWS ATTEMPTED

Season .....  
 Career ..... 8 (vs. St. Bonaventure, 2/2/20)

### 3-POINT FIELD GOALS MADE

Season .....  
 Career ..... 1 (7x, last @ Duquesne, 1/10/21)

### 3-POINT FIELD GOALS ATTEMPTED

Season .....  
 Career ..... 5 (@ Virginia Tech, 11/25/20)

### MINUTES

Season .....  
 Career ..... 36 (@ Howard, 12/22/20)

## GAME-BY-GAME STATISTICS

- Suffered a career ending injury prior to the start of her junior season in 2021-22.

## AS A SOPHOMORE (2020-21)

- Played in 21 of 22 games, making 21 starts
- Finished fourth on the team in scoring at 7.0 points per game, including a career-high 18 points against George Mason
- Led the team in rebounding at 7.1 boards per game (150 rebounds)
- Posted two double-doubles against George Washington (10 points, 10 rebounds) and at Howard (13 points, 11 rebounds)
- Scored in double figures five times and pulled down 10 or more rebounds seven times
- Grabbed a career-high 14 rebounds against Navy
- Shot 40.0 percent from the field (54-for-135) and 57.4 percent from the free throw line (35-for-61)
- Came away with 18 blocks, second on the team
- Her career-game against George Mason went 7-for-11 from the field for 18 points and eight rebounds
- Swiped four steals against George Washington in the A-10 Championship second round
- Played a career-high 36 minutes at Howard, scoring 13 points with 11 rebounds

## CAREER SUMMARY

SEASON	TEAM	GP-GS	MIN/AVG	Field Goals			3-Point			F-Throws			Rebounds				Scoring			
				FG-FGA	FG%	3FG-3FGA	3FG%	FT-FTA	FT%	OFF	DEF	TOT	AVG	PF-FO	A	TO	BLK	STL	PTS	AVG
2019-20	UR	32-2	590/18.4	48-125	.384	4-18	.222	41-77	.532	38	110	148	4.6	50-0	25	56	31	19	141	4.4
2020-21	UR	21-21	556/26.5	54-135	.400	4-15	.267	35-61	.574	49	101	150	7.1	48-1	28	47	18	26	147	7.0
TOTAL		53-23	1146/21.6	102-260	.392	8-33	.242	76-138	.551	87	211	298	5.6	98-1	53	103	49	45	288	5.4





# SIOBHAN RYAN

**JUNIOR**  
**6-0 / GUARD**  
**BUFFALO, N.Y.**  
**SACRED HEART ACADEMY**

# 32

## TOP PERFORMANCES

### POINTS

Season ..... 13 (at Liberty, 11/7/22)  
 Career ..... 25 (vs. Southern Miss, 12/20/21)

### REBOUNDS

Season ..... 4 (at Liberty, 11/7/22)  
 Career ..... 12 (@ Howard, 12/22/20)

### ASSISTS

Season ..... 5 (vs. Mount St. Mary's, 11/10/22)  
 Career ..... 5 (vs. Mount St. Mary's, 11/10/22)

### BLOCKS

Season .....  
 Career ..... 1 (9x, last vs. Rhode Island, 2/19/22)

### STEALS

Season ..... 2 (vs. Mount St. Mary's, 11/10/22)  
 Career ..... 3 (vs. Davidson, 2/9/22)

### FIELD GOALS MADE

Season ..... 5 (at Liberty, 11/7/22)  
 Career ..... 10 (vs. Southern Miss, 12/20/21)

### FIELD GOALS ATTEMPTED

Season ..... 8 (at Liberty, 11/7/22)  
 Career ..... 17 (vs. Southern Miss, 12/20/21)

### FREE-THROWS MADE

Season .....  
 Career ..... 3 (vs. VCU, 2/2/22)

### FREE-THROWS ATTEMPTED

Season .....  
 Career ..... 4 (2x, last vs. VCU, 2/2/22)

### 3-POINT FIELD GOALS MADE

Season ... 3 (2x last vs. Mount St. Mary's, 11/10/22)  
 Career ..... 6 (vs. UMBC, 11/21/21)

### 3-POINT FIELD GOALS ATTEMPTED

Season ..... 5 (at Liberty, 11/7/22)  
 Career ..... 11 (3x, last vs. Southern Miss, 12/20/21)

### MINUTES

Season ..... 33 (at Liberty, 11/7/22)  
 Career ..... 38 (2x, last vs. UMBC, 11/21/21)

## GAME-BY-GAME STATISTICS

#32 RYAN, Siobhan

Opponent	Date	GS	MIN	Total		3-Pointers		Free throws		Rebounds				PF	A	TO	BLK	STL	PTS	AVG
				FG-FGA	PCT	3FG-3FGA	PCT	FT-FTA	PCT	OFF	DEF	TOT	AVG							
at Liberty	11/07/2022	*	32:10	5-8	.625	3-5	.600	0-0	.000	0	4	4	4.0	2	1	0	0	1	13	13.0
Mount St. Mary's	11/10/2022	*	26:05	4-6	.667	3-3	1.000	0-0	.000	0	3	3	3.5	1	5	2	0	2	11	12.0
Totals		2	58:15	9-14	.643	6-8	.750	0-0	.000	0	7	7	3.5	3	6	2	0	3	24	12.0

Player Averages

Games Played	Minutes/game	Points/game	FG Pct	3FG Pct	FT Pct	Rebounds/game	Assists/game	Turnovers/game	Assist/Turnover ratio	Steals/game	Blocks/game
2	29.1	12.0	64.3	75.0	0.0	3.5	3.0	1.0	3.0	1.5	0.0

## AS A JUNIOR

- Led the Spiders with three three-pointers in UR's win at Liberty
- Perfect from long range (3-for-3) against Mount St. Mary's

## CAREER SUMMARY

				Field Goals		3-Point		F-Throws		Rebounds				Scoring						
SEASON	TEAM	GP-GS	MIN/AVG	FG-FGA	FG%	3FG-3FGA	3FG%	FT-FTA	FT%	OFF	DEF	TOT	AVG	PF-FO	A	TO	BLK	STL	PTS	AVG
2020-21	UR	22-6	412/18.7	40-116	.345	15-66	.227	18-25	.720	13	36	49	2.2	33-0	23	36	5	6	113	5.1
2021-22	UR	30-29	781/26.0	90-214	.421	41-123	.333	31-42	.738	29	68	97	3.2	61-0	39	73	5	17	252	8.4
2022-23	UR	2-2	58/29.1	9-14	.643	6-8	.750	0-0	.000	0	7	7	3.5	3-0	6	2	0	3	24	12.0
TOTAL		54-37	1251/23.2	139-344	.404	62-197	.315	49-67	.731	42	111	153	2.8	97-0	68	111	10	26	389	7.2



# ANGEL BURGOS

**SENIOR**  
**5-8 / GUARD**  
**RICHMOND, VA.**  
**TRINITY EPISCOPAL**

# 41

## TOP PERFORMANCES

### POINTS

Season ..... 5 (vs. Mount St. Mary's, 11/10/22)  
 Career ..... 13 (at Dayton, 3/6/20)

### REBOUNDS

Season ..... 5 (vs. Mount St. Mary's, 11/10/22)  
 Career ..... 5 (2x last vs. Mount St. Mary's, 11/10/22)

### ASSISTS

Season ..... 2 (vs. Mount St. Mary's, 11/10/22)  
 Career ..... 5 (5x, last vs. Mount St. Mary's, 11/10/22)

### BLOCKS

Season .....  
 Career ..... 1 (3x, last vs. Dayton, 1/26/22)

### STEALS

Season .....  
 Career ..... 3 (vs. Duquesne, 2/12/20)

### FIELD GOALS MADE

Season ..... 2 (vs. Mount St. Mary's, 11/10/22)  
 Career ..... 5 (@ Dayton, 3/6/20)

### FIELD GOALS ATTEMPTED

Season ..... 3 (vs. Mount St. Mary's, 11/10/22)  
 Career ..... 7 (@ Dayton, 3/6/20)

### FREE-THROWS MADE

Season ..... 1 (vs. Mount St. Mary's, 11/10/22)  
 Career ..... 3 (vs. Duquesne, 1/1/22)

### FREE-THROWS ATTEMPTED

Season ..... 3 (vs. Mount St. Mary's, 11/10/22)  
 Career ..... 4 (2x, last vs. Duquesne, 1/1/22)

### 3-POINT FIELD GOALS MADE

Season .....  
 Career ..... 1 (@ Dayton, 3/6/20)

### 3-POINT FIELD GOALS ATTEMPTED

Season .....  
 Career ..... 2 (vs. Duquesne, 2/12/20)

### MINUTES

Season ..... 11 (vs. Mount St. Mary's, 11/10/22)  
 Career ..... 18 (@ Dayton, 3/6/20)

## GAME-BY-GAME STATISTICS

### #41 BURGOS, Angel

			Total		3-Pointers		Free throws		Rebounds											
Opponent	Date	GS	MIN	FG-FGA	PCT	3FG-3FGA	PCT	FT-FTA	PCT	OFF	DEF	TOT	AVG	PF	A	TO	BLK	STL	PTS	AVG
at Liberty	11/07/2022		02:10	0-1	.000	0-0	.000	0-0	.000	0	0	0	0.0	0	1	0	0	0	0	0.0
Mount St. Mary's	11/10/2022		12:11	2-3	.667	0-0	.000	1-3	.333	0	5	5	2.5	0	2	0	0	0	5	2.5
Totals		0	14:20	2-4	.500	0-0	.000	1-3	.333	0	5	5	2.5	0	3	0	0	0	5	2.5

### Player Averages

Games Played	Minutes/game	Points/game	FG Pct	3FG Pct	FT Pct	Rebounds/game	Assists/game	Turnovers/game	Assist/Turnover ratio	Steals/game	Blocks/game
2	7.2	2.5	50.0	0.0	33.3	2.5	1.5	0.0	3.0	0.0	0.0

## AS A SENIOR

- Saw her first game action of the season playing four minutes in a win at Liberty
- Scored five points, pulled down five rebound and dished out two assists againsts Mount St. Mary's

## CAREER SUMMARY

		Field Goals				3-Point		F-Throws		Rebounds								Scoring			
SEASON	TEAM	GP-GS	MIN	AVG	FG-FGA	FG%	3FG-3FGA	3FG%	FT-FTA	FT%	OFF	DEF	TOT	AVG	PF-FO	A	TO	BLK	STL	PTS	AVG
2019-20	UR	18-0	107	6.0	11-21	.524	1-7	.143	4-6	.667	3	16	19	1.1	15-0	9	13	2	5	27	1.5
2020-21	UR	8-0	33	4.1	2-5	.400	0-0	.000	1-4	.250	2	2	4	0.5	5-0	3	4	0	1	5	0.6
2021-22	UR	15-0	59	3.9	0-8	.000	0-3	.000	6-8	.750	4	11	15	1.0	12-0	6	8	1	1	6	0.4
2022-23	UR	2-0	14	7.2	2-4	.500	0-0	.000	1-3	.333	0	5	5	2.5	0-0	3	0	0	0	5	2.5
TOTAL		43-0	213	5.0	15-38	.395	1-10	.100	12-21	.571	9	34	43	1.0	32-0	21	25	3	7	43	1.0

**MAGGIE DOOGAN**

**FRESHMAN**  
**6-2 / FORWARD**  
**BROOMALL, PA.**  
**CARDINAL O'HARA HS**

**44****TOP PERFORMANCES****POINTS**

Season ..... 6 (vs. Mount St. Mary's, 11/10/22)  
 Career ..... 6 (vs. Mount St. Mary's, 11/10/22)

**REBOUNDS**

Season ..... 3 (vs. Mount St. Mary's, 11/10/22)  
 Career ..... 3 (vs. Mount St. Mary's, 11/10/22)

**ASSISTS**

Season ..... 2 (vs. Mount St. Mary's, 11/10/22)  
 Career ..... 2 (vs. Mount St. Mary's, 11/10/22)

**BLOCKS**

Season .....  
 Career .....

**STEALS**

Season ..... 3 (vs. Mount St. Mary's, 11/10/22)  
 Career ..... 3 (vs. Mount St. Mary's, 11/10/22)

**FIELD GOALS MADE**

Season ..... 2 (vs. Mount St. Mary's, 11/10/22)  
 Career ..... 2 (vs. Mount St. Mary's, 11/10/22)

**FIELD GOALS ATTEMPTED**

Season ..... 4 (vs. Mount St. Mary's, 11/10/22)  
 Career ..... 4 (vs. Mount St. Mary's, 11/10/22)

**FREE-THROWS MADE**

Season ....2 (2x last vs. Mount St. Mary's, 11/10/22)  
 Career ....2 (2x last vs. Mount St. Mary's, 11/10/22)

**FREE-THROWS ATTEMPTED**

Season ....2 (2x last vs. Mount St. Mary's, 11/10/22)  
 Career ....2 (2x last vs. Mount St. Mary's, 11/10/22)

**3-POINT FIELD GOALS MADE**

Season ..... 1 (at Liberty, 11/7/22)  
 Career ..... 1 (at Liberty, 11/7/22)

**3-POINT FIELD GOALS ATTEMPTED**

Season ..... 3 (at Liberty, 11/7/22)  
 Career ..... 3 (at Liberty, 11/7/22)

**MINUTES**

Season ..... 18 (vs. Mount St. Mary's, 11/10/22)  
 Career ..... 18 (vs. Mount St. Mary's, 11/10/22)

**GAME-BY-GAME STATISTICS**

Opponent	Date	GS	MIN	Total		3-Pointers		Free throws		Rebounds				PF				PTS	
				FG-FGA	PCT	3FG-3FGA	PCT	FT-FTA	PCT	OFF	DEF	TOT	AVG	PF	A	TO	BLK	STL	PTS
at Liberty	11/07/2022		16:12	1-3	.333	1-3	.333	2-2	1.000	0	1	1	1.0	3	0	1	0	1	5
Mount St. Mary's	11/10/2022		18:01	2-4	.500	0-2	.000	2-2	1.000	1	2	3	2.0	3	2	3	0	3	6
<b>Totals</b>		<b>0</b>	<b>34:13</b>	<b>3-7</b>	<b>.429</b>	<b>1-5</b>	<b>.200</b>	<b>4-4</b>	<b>1.000</b>	<b>1</b>	<b>3</b>	<b>4</b>	<b>2.0</b>	<b>6</b>	<b>2</b>	<b>4</b>	<b>0</b>	<b>4</b>	<b>11</b>

**Player Averages**

Games Played	Minutes/ game	Points/ game	FG Pct	3FG Pct	FT Pct	Rebounds/ game	Assists/ game	Turnovers/ game	Assist/Turnover ratio	Steals/ game	Blocks/ game
2	17.1	5.5	42.9	20.0	100.0	2.0	1.0	2.0	0.5	2.0	0.0

**AS A FRESHMAN...**

- Hit a three-pointer against Liberty for her first collegiate points
- Posted six points, three rebounds, three steals and two assists against Mount St. Mary's

**PREP CAREER HIGHLIGHTS**

- Two-time Delaware County Daily Times Player of the Year
- PIAA 5A State Champion
- 5A First-Team All-State
- All-Catholic First-Team
- Also lettered in volleyball at Cardinal O'Hara
- McDonalds All-American Nominee

**CAREER SUMMARY**

				Field Goals		3-Point		F-Throws		Rebounds				Scoring					
SEASON	TEAM	GP-GS	MIN/AVG	FG-FGA	FG%	3FG-3FGA	3FG%	FT-FTA	FT%	OFF	DEF	TOT	AVG	PF-FO	A	TO	BLK	STL	PTS
2022-23	UR	2-0	34/17.1	3-7	.429	1-5	.200	4-4	1.000	1	3	4	2.0	6-0	2	4	0	4	11
<b>TOTAL</b>		<b>2-0</b>	<b>34/17.1</b>	<b>3-7</b>	<b>.429</b>	<b>1-5</b>	<b>.200</b>	<b>4-4</b>	<b>1.000</b>	<b>1</b>	<b>3</b>	<b>4</b>	<b>2.0</b>	<b>6-0</b>	<b>2</b>	<b>4</b>	<b>0</b>	<b>4</b>	<b>11</b>

# COMBINED STATS



## 2022-23 Richmond Women's Basketball Combined Team Statistics All games

Page 1/1  
as of Nov 11, 2022

### Game Records

Record	Overall	Home	Away	Neutral
ALL GAMES	2-0	1-0	1-0	0-0
CONFERENCE	0-0	0-0	0-0	0-0
NON-CONFERENCE	2-0	1-0	1-0	0-0

### Score by Periods

Team	1st	2nd	3rd	4th	OT	TOT
Richmond	40	39	48	29	0	156
Opponents	28	17	27	20	0	92

### Team Box Score

No. Player					Total		3-Point		F-Throw		Rebounds													
		GP-GS	MIN	AVG	FG-FGA	FG%	3FG-3FGA	3FG%	FT-FTA	FT%	OFF	DEF	TOT	AVG	PF	DQ	A	TO	BLK	STL	PTS	AVG		
20	BUDNIK, Addie	2-2	60:56	30.5	14-22	.636	3-5	.600	6-6	1.000	4	9	13	6.5	3	0	8	4	1	6	37	18.5		
32	RYAN, Siobhan	2-2	58:15	29.1	9-14	.643	6-8	.750	0-0	.000	0	7	7	3.5	3	0	6	2	0	3	24	12.0		
1	TOWNSEND, Grace	2-2	57:10	28.6	5-11	.455	1-3	.333	9-12	.750	1	11	12	6.0	2	0	9	6	1	3	20	10.0		
25	HILL, Katie	2-2	52:50	26.4	5-14	.357	3-5	.600	6-8	.750	1	4	5	2.5	3	0	2	2	0	3	19	9.5		
24	KRISTA GRAVA, Emilija	2-0	33:24	16.7	5-7	.714	1-3	.333	4-4	1.000	2	3	5	2.5	5	0	2	2	0	0	15	7.5		
22	ULLSTROM, Rachel	2-0	28:42	14.3	6-12	.500	0-3	.000	1-1	1.000	3	3	6	3.0	0	0	1	2	0	3	13	6.5		
44	DOOGAN, Maggie	2-0	34:13	17.1	3-7	.429	1-5	.200	4-4	1.000	1	3	4	2.0	6	0	2	4	0	4	11	5.5		
11	WILLIAMS, Cayla	2-2	32:42	16.4	3-6	.500	2-4	.500	2-2	1.000	1	3	4	2.0	4	0	0	5	0	1	10	5.0		
41	BURGOS, Angel	2-0	14:20	7.2	2-4	.500	0-0	.000	1-3	.333	0	5	5	2.5	0	0	3	0	0	0	5	2.5		
0	BOONE, Sydney	1-0	05:50	5.8	1-1	1.000	0-0	.000	0-0	.000	0	0	0	0.0	0	0	0	0	0	1	2	2.0		
13	ROGERS, Torin	2-0	10:56	5.5	0-1	.000	0-0	.000	0-0	.000	0	4	4	2.0	1	0	0	3	0	0	0	0.0		
21	LEWANDOWSKI, Kylee	2-0	10:42	5.4	0-2	.000	0-1	.000	0-0	.000	0	2	2	1.0	0	0	0	1	0	0	0	0.0		
Team											3	3	6											
Total		2	400		53-101	.525	17-37	.459	33-40	.825	16	57	73	36.5	27	0	33	31	2	24	156	78.0		
Opponents		2	400		33-107	.308	16-65	.246	10-19	.526	21	34	55	27.5	34	0	23	42	6	12	92	46.0		

### Team Statistics

	UR	OPP
<b>Scoring</b>	<b>156</b>	<b>92</b>
Points per game	78.0	46.0
Scoring margin	+32.0	-
<b>Field goals-att</b>	<b>53-101</b>	<b>33-107</b>
Field goal pct	.525	.308
<b>3 point fg-att</b>	<b>17-37</b>	<b>16-65</b>
3-point FG pct	.459	.246
3-pt FG made per game	8.5	8.0
<b>Free throws-att</b>	<b>33-40</b>	<b>10-19</b>
Free throw pct	.825	.526
F-Throws made per game	16.5	5.0
<b>Rebounds</b>	<b>73</b>	<b>55</b>
Rebounds per game	36.5	27.5
Rebounding margin	+9.0	-
<b>Assists</b>	<b>33</b>	<b>23</b>
Assists per game	16.5	11.5
<b>Turnovers</b>	<b>31</b>	<b>42</b>
Turnovers per game	15.5	21.0
Turnover margin	+5.5	-
Assist/turnover ratio	1.1	0.5
<b>Steals</b>	<b>24</b>	<b>12</b>
Steals per game	12.0	6.0
<b>Blocks</b>	<b>2</b>	<b>6</b>
Blocks per game	1.0	3.0
<b>Winning streak</b>	<b>2</b>	<b>-</b>
Home win streak	1	-
<b>Attendance</b>	<b>396</b>	<b>763</b>
Home games-Avg/Game	1-396	1-763
Neutral site-Avg/Game	-	0-0

### Team Results

Date	Opponent		Score	Att.
11/07/2022	at Liberty	W	69-48	763
11/10/2022	Mount St. Mary's	W	87-44	396



# SEASON BOX SCORE



## 2022-23 Richmond Women's Basketball Season Box Score All games

Page 1/1  
as of Nov 11, 2022

### Game Records

Record	Overall	Home	Away	Neutral
ALL GAMES	2-0	1-0	1-0	0-0
CONFERENCE	0-0	0-0	0-0	0-0
NON-CONFERENCE	2-0	1-0	1-0	0-0

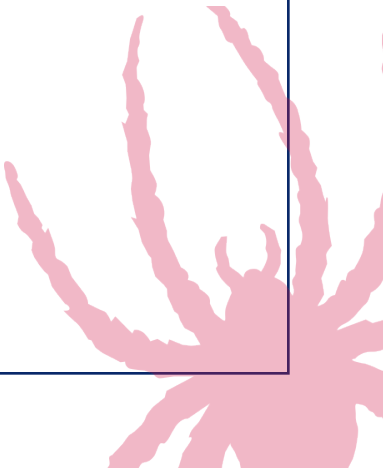
### Team Box Score

No.	Player				Total		3-Point		F-Throw		Rebounds											
		GP-GS	MIN	AVG	FG-FGA	FG%	3FG-3FGA	3FG%	FT-FTA	FT%	OFF	DEF	TOT	AVG	PF	DQ	A	TO	BLK	STL	PTS	AVG
20	BUDNIK, Addie	2-2	60:56	30.5	14-22	.636	3-5	.600	6-6	1.000	4	9	13	6.5	3	0	8	4	1	6	37	18.5
32	RYAN, Siobhan	2-2	58:15	29.1	9-14	.643	6-8	.750	0-0	.000	0	7	7	3.5	3	0	6	2	0	3	24	12.0
1	TOWNSEND, Grace	2-2	57:10	28.6	5-11	.455	1-3	.333	9-12	.750	1	11	12	6.0	2	0	9	6	1	3	20	10.0
25	HILL, Katie	2-2	52:50	26.4	5-14	.357	3-5	.600	6-8	.750	1	4	5	2.5	3	0	2	2	0	3	19	9.5
24	KRISTA GRAVA, Emilija	2-0	33:24	16.7	5-7	.714	1-3	.333	4-4	1.000	2	3	5	2.5	5	0	2	2	0	0	15	7.5
22	ULLSTROM, Rachel	2-0	28:42	14.3	6-12	.500	0-3	.000	1-1	1.000	3	3	6	3.0	0	0	1	2	0	3	13	6.5
44	DOOGAN, Maggie	2-0	34:13	17.1	3-7	.429	1-5	.200	4-4	1.000	1	3	4	2.0	6	0	2	4	0	4	11	5.5
11	WILLIAMS, Cayla	2-2	32:42	16.4	3-6	.500	2-4	.500	2-2	1.000	1	3	4	2.0	4	0	0	5	0	1	10	5.0
41	BURGOS, Angel	2-0	14:20	7.2	2-4	.500	0-0	.000	1-3	.333	0	5	5	2.5	0	0	3	0	0	0	5	2.5
0	BOONE, Sydney	1-0	05:50	5.8	1-1	1.000	0-0	.000	0-0	.000	0	0	0	0.0	0	0	0	0	0	1	2	2.0
13	ROGERS, Torin	2-0	10:56	5.5	0-1	.000	0-0	.000	0-0	.000	0	4	4	2.0	1	0	0	3	0	0	0	0.0
21	LEWANDOWSKI, Kylee	2-0	10:42	5.4	0-2	.000	0-1	.000	0-0	.000	0	2	2	1.0	0	0	0	1	0	0	0	0.0
Team											3	3	6									
Total		2	400		53-101	.525	17-37	.459	33-40	.825	16	57	73	36.5	27	0	33	31	2	24	156	78.0
Opponents		2	400		33-107	.308	16-65	.246	10-19	.526	21	34	55	27.5	34	0	23	42	6	12	92	46.0

### Score by Periods

Team	1st	2nd	3rd	4th	OT	TOT
Richmond	40	39	48	29	0	156
Opponents	28	17	27	20	0	92

**CONFERENCE ONLY STATS**



# SEASON RESULTS

## Game Records

Record	Overall	Home	Away	Neutral
ALL GAMES	2-0	1-0	1-0	0-0
CONFERENCE	0-0	0-0	0-0	0-0
NON-CONFERENCE	2-0	1-0	1-0	0-0

## Team Results

Date	Opponent		Score	Att.	High Points	High Rebounds
11/07/2022	at Liberty	W	69-48	763	(21) BUDNIK, Addie	(8) TOWNSEND, Grace
11/10/2022	Mount St. Mary's	W	87-44	396	(16) BUDNIK, Addie	(6) BUDNIK, Addie

## Attendance Summary

	Games	Attend	Avg/Game
Home	1	396	396
Away	1	763	763
Neutral	0	0	0
<b>Total</b>	<b>2</b>	<b>1159</b>	<b>580</b>

# CATEGORY LEADERS



2022-23 Richmond Women's Basketball  
Category Leaders  
All games

Page 1/3  
as of Nov 11, 2022

## Points

##	Player	G	Pts	Pts/G
20	Budnik, Addie	2	37	18.5
32	Ryan, Siobhan	2	24	12.0
1	Townsend, Grace	2	20	10.0
25	Hill, Katie	2	19	9.5
24	Krista Grava, Emilija	2	15	7.5
22	Ullstrom, Rachel	2	13	6.5
44	Doogan, Maggie	2	11	5.5
11	Williams, Cayla	2	10	5.0
41	Burgos, Angel	2	5	2.5
0	Boone, Sydney	1	2	2.0

## Scoring Average

##	Player	G	Pts	Pts/G
20	Budnik, Addie	2	37	18.5
32	Ryan, Siobhan	2	24	12.0
1	Townsend, Grace	2	20	10.0
25	Hill, Katie	2	19	9.5
24	Krista Grava, Emilija	2	15	7.5
22	Ullstrom, Rachel	2	13	6.5
44	Doogan, Maggie	2	11	5.5
11	Williams, Cayla	2	10	5.0
41	Burgos, Angel	2	5	2.5
0	Boone, Sydney	1	2	2.0

## Field Goal Percentage

##	Player	FG	Att	Pct
0	Boone, Sydney	1	1	1.000
24	Krista Grava, Emilija	5	7	.714
32	Ryan, Siobhan	9	14	.643
20	Budnik, Addie	14	22	.636
22	Ullstrom, Rachel	6	12	.500
11	Williams, Cayla	3	6	.500
41	Burgos, Angel	2	4	.500
1	Townsend, Grace	5	11	.455
44	Doogan, Maggie	3	7	.429
25	Hill, Katie	5	14	.357

## Field Goal Attempts

##	Player	G	Att	Att/G
20	Budnik, Addie	2	22	11.0
32	Ryan, Siobhan	2	14	7.0
25	Hill, Katie	2	14	7.0
22	Ullstrom, Rachel	2	12	6.0
1	Townsend, Grace	2	11	5.5

## Field Goals Made

##	Player	G	Made	Made/G
20	Budnik, Addie	2	14	7.0
32	Ryan, Siobhan	2	9	4.5
22	Ullstrom, Rachel	2	6	3.0
1	Townsend, Grace	2	5	2.5
25	Hill, Katie	2	5	2.5

## 3-Point FG Percentage

##	Player	3FG	Att	Pct
32	Ryan, Siobhan	6	8	.750
20	Budnik, Addie	3	5	.600
25	Hill, Katie	3	5	.600
11	Williams, Cayla	2	4	.500
1	Townsend, Grace	1	3	.333
24	Krista Grava, Emilija	1	3	.333
44	Doogan, Maggie	1	5	.200

## 3-Point FG Attempts

##	Player	G	Att	Att/G
32	Ryan, Siobhan	2	8	4.0
20	Budnik, Addie	2	5	2.5
25	Hill, Katie	2	5	2.5
44	Doogan, Maggie	2	5	2.5
11	Williams, Cayla	2	4	2.0

## 3-Point FG Made

##	Player	G	Made	Made/G
32	Ryan, Siobhan	2	6	3.0
20	Budnik, Addie	2	3	1.5
25	Hill, Katie	2	3	1.5
11	Williams, Cayla	2	2	1.0
1	Townsend, Grace	2	1	0.5



# CATEGORY LEADERS



All games

## Free Throw Percentage

##	Player	Made	Att	Pct
20	Budnik, Addie	6	6	1.000
24	Krista Grava, Emilija	4	4	1.000
22	Ullstrom, Rachel	1	1	1.000
44	Doogan, Maggie	4	4	1.000
11	Williams, Cayla	2	2	1.000
1	Townsend, Grace	9	12	.750
25	Hill, Katie	6	8	.750
41	Burgos, Angel	1	3	.333

## Free Throw Attempts

##	Player	G	Att	Att/G
1	Townsend, Grace	2	12	6.0
25	Hill, Katie	2	8	4.0
20	Budnik, Addie	2	6	3.0
24	Krista Grava, Emilija	2	4	2.0
44	Doogan, Maggie	2	4	2.0

## Free Throws Made

##	Player	G	Made	Made/G
1	Townsend, Grace	2	9	4.5
20	Budnik, Addie	2	6	3.0
25	Hill, Katie	2	6	3.0
24	Krista Grava, Emilija	2	4	2.0
44	Doogan, Maggie	2	4	2.0

## Rebounds

##	Player	G	Reb	Reb/G
20	Budnik, Addie	2	13	6.5
1	Townsend, Grace	2	12	6.0
32	Ryan, Siobhan	2	7	3.5
22	Ullstrom, Rachel	2	6	3.0
25	Hill, Katie	2	5	2.5

## Assists

##	Player	G	Ast	Ast/G
1	Townsend, Grace	2	9	4.5
20	Budnik, Addie	2	8	4.0
32	Ryan, Siobhan	2	6	3.0
41	Burgos, Angel	2	3	1.5
25	Hill, Katie	2	2	1.0

## Rebounds Average

##	Player	G	Reb	Reb/G
20	Budnik, Addie	2	13	6.5
1	Townsend, Grace	2	12	6.0
32	Ryan, Siobhan	2	7	3.5
22	Ullstrom, Rachel	2	6	3.0
25	Hill, Katie	2	5	2.5

## Steals

##	Player	G	Stl	Stl/G
20	Budnik, Addie	2	6	3.0
44	Doogan, Maggie	2	4	2.0
32	Ryan, Siobhan	2	3	1.5
1	Townsend, Grace	2	3	1.5
25	Hill, Katie	2	3	1.5

## Offensive Rebounds

##	Player	G	OReb	OReb/G
20	Budnik, Addie	2	4	2.0
22	Ullstrom, Rachel	2	3	1.5
24	Krista Grava, Emilija	2	2	1.0
1	Townsend, Grace	2	1	0.5
25	Hill, Katie	2	1	0.5

## Blocked Shots

##	Player	G	Blk	Blk/G
20	Budnik, Addie	2	1	0.5
1	Townsend, Grace	2	1	0.5

## Defensive Rebounds

##	Player	G	DReb	DReb/G
1	Townsend, Grace	2	11	5.5
20	Budnik, Addie	2	9	4.5
32	Ryan, Siobhan	2	7	3.5
41	Burgos, Angel	2	5	2.5
25	Hill, Katie	2	4	2.0

## Minutes

##	Player	G	Min	Min/G
20	Budnik, Addie	2	61	30:28
32	Ryan, Siobhan	2	58	29:08
1	Townsend, Grace	2	57	28:35
25	Hill, Katie	2	53	26:25
44	Doogan, Maggie	2	34	17:07

# CATEGORY LEADERS



2022-23 Richmond Women's Basketball  
Category Leaders  
All games

Page 3/3  
as of Nov 11, 2022

## Fouls

##	Player	G	PF	PF/G
44	Doogan, Maggie	2	6	3.0
24	Krista Grava, Emilija	2	5	2.5
11	Williams, Cayla	2	4	2.0
20	Budnik, Addie	2	3	1.5
32	Ryan, Siobhan	2	3	1.5

## Turnovers

##	Player	G	TO	TO/G
1	Townsend, Grace	2	6	3.0
11	Williams, Cayla	2	5	2.5
20	Budnik, Addie	2	4	2.0
44	Doogan, Maggie	2	4	2.0
13	Rogers, Torin	2	3	1.5

## Foul Outs

##	Player	G	FO
----	--------	---	----

# GAME-BY-GAME STARTING LINEUP

OPPONENT.....	1.....	2.....	3.....	4.....	5.....	RECORD
at Liberty .....	Townsend .....	Hill.....	Ryan.....	Williams.....	Budnik .....	1-0
Mount St. Mary's.....	Townsend .....	Hill.....	Ryan.....	Williams.....	Budnik .....	1-0

## TEAM GAME-BY-GAME

				Total		3-Pointers		Free throws		Rebounds											
Opponent	Date	Score		FG-FGA	PCT	3FG-3FGA	PCT	FT-FTA	PCT	OFF	DEF	TOT	AVG	PF	A	TO	BLK	STL	PTS	AVG	
at Liberty	11/07/2022	69-48	W	22-46	.478	9-20	.450	16-18	.889	5	23	28	28.0	18	11	13	1	8	69	69.0	
Mount St. Mary's	11/10/2022	87-44	W	31-55	.564	8-17	.471	17-22	.773	11	34	45	36.5	9	22	18	1	16	87	78.0	
Total		156		53-101	.525	17-37	.459	33-40	.825	16	57	73	36.5	27	33	31	2	24	156	78.0	
Opponents		92		33-107	.308	16-65	.246	10-19	.526	21	34	55	27.5	34	23	42	6	12	92	46.0	

### Richmond Averages

Games Played	Points/game	FG Pct	3FG Pct	FT Pct	Rebounds/game	Assists/game	Turnovers/game	Assist/Turnover ratio	Steals/game	Blocks/game
2	78.0	52.5	45.9	82.5	36.5	16.5	15.5	1.1	12.0	1.0

# TV/RADIO CHART



**1 • GRACE TOWNSEND**  
JR • G • 5-5 • MIDLOTHIAN, VA.



**2 • SYDNEY BOONE**  
SO • G • 5-8 • RICHMOND, VA.



**4 • JADA GREEN**  
FR • F • 6-1 • PARKLAND, FLA.



**11 • CAYLA WILLIAMS**  
SO • F • 6-2 • GAINESVILLE, VA.



**13 • TORIN ROGERS**  
JR • G • 6-1 • BRASSTOWN, NC



**20 • ADDIE BUDNIK**  
JR • F • 6-2 • HIGHLAND PARK, ILL.



**21 • KYLEE LEWANDOWSKI**  
JR • G • 6-1 • PITTSBURGH, PA.



**22 • RACHEL ULLSTROM**  
FR • G • 6-1 • AUBURN, MASS.



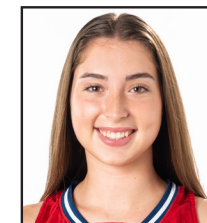
**24 • EMILIA KRISTA GRAVA**  
GS • F • 6-2 • LIGATNE, LATIVA



**25 • KATIE HILL**  
SO • G • 6-0 • COLTS NECK, N.J.



**31 • ELAINA CHAPMAN**  
SR • F • 6-3 • RICHMOND, VA.



**32 • SIOBHAN RYAN**  
JR • G • 6-0 • BUFFALO, N.Y.



**41 • ANGEL BURGOS**  
SR • G • 5-8 • RICHMOND, VA.



**44 • MAGGIE DOOGAN**  
FR • F • 6-2 • BROOMALL, PA.



**AARON ROUSSELL**  
HEAD COACH



**JEANINE RADICE**  
ASSISTANT COACH



**BRITTANY PINKNEY**  
ASSISTANT COACH



**DARREN GUENSCH**  
ASSISTANT COACH



**JANELLE SILVER-MARTIN**  
DIR. OF BASKETBALL OPERATIONS



**JOHN STUDER**  
DIR. OF PROGRAM DEVELOPMENT