



GAME NOTES

CLEMSON SOFTBALL

#TEAM3

CLEMSON REGIONALS

FRIDAY, MAY 20 - SUNDAY, MAY 22

MCWHORTER STADIUM • CLEMSON, S.C.

THIS WEEK

Friday, May 20

- No. 14/13 Clemson vs. UNC Wilmington: 12 p.m.
- No. 17/21 Auburn vs. No. RV/RV Louisiana: 2:30 p.m.

Saturday, May 21

- Game 1 Winner vs. Game 2 Winner: 1 p.m.
- Game 1 Loser vs. Game 2 Loser: 3:30 p.m.
- Game 3 Loser vs. Game 4 Winner: 5 p.m.

Sunday, May 22

- Game 3 Winner vs. Game 5 Winner: 12 p.m.
- Game 7 (If Necessary): 2:30 p.m.

Where: McWhorter Stadium | Clemson, S.C.

Watch: Clemson's opening game against UNC Wilmington will be available to watch on ACC Network with Jenn Hildreth and Carol Bruggeman on the call.

Listen: Fans can listen to Clemson's games on WCCP and clemsonsoftball.com all weekend long. William Qualkinbush and Scott Whitlock will be on the call.

Live Stats - ClemsonTigers.com/softball/schedule

Social Media - ClemsonSoftball

CLEMSON OVERVIEW

- Clemson returns 21 players from last season to the 2022 roster and added eight newcomers.
- The Tigers are batting .274 as a team with a .473 slugging percentage and .369 on-base percentage.
- Clemson's pitching staff holds a 1.87 ERA through 355.1 innings and struck out a combined 324 batters.
- The No. 10 national seed Tigers are hosting a Regional for the first time in only the third year of the program. They have qualified for the NCAA Tournament in the both years that they have been eligible.

UNC WILMINGTON OVERVIEW

- Kristy Norton leads UNC Wilmington.
- The Seahawks are batting .271 off 299 hits with 18 home runs, 207 runs and 110 stolen bases. In the circle, the team has a 1.73 ERA through 303 innings pitched and 296 strikeouts.
- Janel Gamache leads the team at the plate with a .357 average with 40 hits, 24 runs scored and 29 RBIs. Emily Winstead holds a 1.66 ERA through 135 innings with 182 strikeouts.

AUBURN OVERVIEW

- Auburn is led by fifth year head coach Mickey Dean.
- The Tigers are batting .303 off 414 hits with 335 runs and 66 stolen bases. In the circle, Auburn has a 2.64 ERA through 344.2 innings with 448 strikeouts.
- Carlee McConchie leads the Tigers with a .346 off 44 hits with 21 RBIs and 29 runs scored. Maddie Penta leads in the Tigers in the circle with a 1.77 ERA through 182 innings pitched with 258 strikeouts.

LOUISIANA OVERVIEW

- Louisiana is led by fifth year head coach Gary Glasco.
- The team is batting .358 with 536 hits including 78 home runs and 406 runs. In the circle, the team holds a 2.05 ERA through 362 innings with 473 strikeouts.
- Jourdyn Campbell leads the Ragin' Cajuns with a .460 average off 56 hits including 11 doubles and 10 home runs. Meghan Schorman holds a 1.73 ERA through 121.2 innings pitched with 165 strikeouts.

QUICK HITS

- Clemson has outscored opponents this season 263-131.
- The Tigers have run-ruled 11 opponents this season: FGCU, Kent State, LIU, Texas Tech, Boston U, Winthrop, Furman and four ACC opponents (Duke, Louisville, North Carolina and Pitt twice).
- Clemson has 378 hits through 54 games, including posting 61 doubles and 64 home runs.
- The Tigers have 242 RBIs this season led by Alia Logoleo (43), Valerie Cagle (40), Marissa Guimbarda (38) and McKenzie Clark (31).
- When Clemson scores in the first inning, the Tigers are 18-4. The Tigers have outscored opponents 44-20 in the first inning.
- The Tigers are 30-7 when scoring first this season, no matter what inning.

THE NATIONALLY RANKED TIGERS

- The Clemson Tigers were named the No. 10 national seed during Sunday's Selection Show to become a NCAA Regional host for the first time in only the second season eligible for postseason play.
- Clemson is clocking in at No. 14 on the USA Today/NFCA weekly poll, No. 13 on ESPN/USA Softball and No. 10 on Softball America.
- Clemson received its first single-digit ranking in program history clocking in at No. 9 on the ESPN/USA Softball poll during the third week.
- Last season, Clemson climbed as high as No. 10 by ESPN/USA Softball and finished No. 17 last season.
- Entering regionals, Clemson sits at No. 8 on the RPI list and No. 4 on the strength of schedule. The Tigers have played 40 games against opponents in the top-75 RPI.

WALK IT OFF

- The Clemson Tigers have proven all season that they may be down, but they are never out of a game.
- The Tigers have had 12 walk off wins, five have been run-rule victories while four have been in extra innings.
- On top of the walk offs, Clemson has five comeback wins, including four that were walk off wins.

WALK OFF VICTORIES (2022)

Opponent	Date	Batter	Run-Scorer
Kent State	2/11	Pereira	Stuart, Guimbarda
LIU	2/12	Cagle	Russ, Cagle
Texas Tech	2/17	Hyatt	May, Pereira, Oda
Tennessee	2/18	Clark	Moore
Boston U.	2/25	Logoleo	Pereira, Logoleo
Liberty	3/13	Keller	Pereira, Houston
Liberty	3/14	Logoleo	Houston
Louisville	3/26	Vieira	Shannon
Furman	4/6	Guimbarda	Cagle, Guimbarda
Notre Dame	4/14	Cagle	Cheek
Notre Dame	4/16	Pereira	Houston
Georgia Tech	5/1	Moore	Logoleo

CAREER MILESTONES

- Clemson softball reaches new milestones both as a team and individually every day.
- In the series against Notre Dame during the regular season, Valerie Cagle, Sam Russ and Millie Thompson all reached impressive career milestones.
- Cagle opened the series on Thursday earning her 50th

CLEMSON AT A GLANCE

Overall Record:	39-15
ACC Record:	14-10
Home Record:	22-5
Away Record:	10-6
Neutral Record:	7-4
Streak:	W1
Last 5 Games:	4-1
Last 10 Games:	6-4
Day Record:	24-7
Night Record:	15-8

HEAD COACH JOHN RITTMAN

Third Season at Clemson:	102-31 (.767)
ACC Record (Regular Season):	48-16 (.750)
21st Year Overall:	852-382-3 (.690)

CLEMSON HISTORY

All-Time:	102-31
All-Time Record, Home:	59-11
All-Time Record, Away:	27-11
All-Time Record, Neutral:	16-9

VS UNC WILMINGTON

All-Time:	0-0
Last Clemson Win:	N/A
Last UNC Wilmington Win:	N/A
Streak:	N/A

*Note: A full 2022 schedule is available on the second page

*Note to media members: Credential requests for home games at McWhorter Stadium open on the preceeding Monday of each game. Requests can be made at ClemsonTigers.com/softball under Media Resources.

WEEKLY POLLS

2022						
Date	W-L	NFCA	ESPN	D1	SA	
2-7	0-0	15	14	14	14	
2-15	3-1	15	12	13	14	
2-22	6-3	15	9	13	12	
3-1	11-3	14	9	13	11	
3-8	12-6	17	15	17	17	
3-15	17-6	17	15	18	19	
3-22	18-8	16	15	19	21	
3-29	21-10	18	16	19	21	
4/5	25-10	18	T17	19	19	
4/12	30-10	16	16	17	14	
4/19	33-11	17	17	17	14	
4/26	33-14	18	17	18	18	
5/3	37-14	18	17	16	17	
5/10	37-14	15	15	16	16	
5/17	39-15	14	13		10	
2021						
Date	W-L	NFCA	ESPN	D1	SA	
3-29	22-4	18	19	23	20	
4-5	26-4	18	18	20	19	
4-12	26-4	17	18	19	19	
4-17	32-4	16	16	18	16	
4-26	37-4	13	13	15	13	
5-3	37-4	13	11	15	13	
5-10	40-5	13	10	16	13	
5-17	42-6	13	10	17	14	
6-10	44-8	18	17	19	22	

Note: Clemson's all-time rankings can be found in the Clemson softball record book.

Stats and notes are updated going into series only

NOTES

2022 SCHEDULE

Date	Day	Opponent (Rank)	Watch	Time/Result
2-10	Thu	\$ at FGCU	Youtube	W, 11-0 (5)
2-11	Fri	\$ Kent State	N/A	W, 8-0 (5)
2-11	Fri	\$ Texas	N/A	L, 0-4
2-12	Sat	\$ LIU	N/A	W, 8-0 (6)
2-13	Sun	\$ Boston College	N/A	Canceled
2-17	Thu	% Texas Tech	ACCN	W, 8-0 (5)
2-18	Fri	% Tennessee	ESPN+	W, 4-3 (9)
2-19	Sat	% Northwestern	ACCN	L, 0-7
2-19	Sat	% Wisconsin	ESPN+	L, 1-2 (8)
2-20	Sun	% Washington	ESPNU	W, 2-0
2-23	Wed	at Charlotte	ESPN+	W, 5-2
2-25	Fri	# Boston University	ACCNX	W, 8-0 (5)
2-25	Fri	# St. Francis	ACCNX	W, 2-0
2-26	Sat	# Akron	ACCNX	W, 10-5
2-26	Sat	# Boston University	ACCNX	W, 7-3
3-1	Tue	Gardner-Webb	ACCNX	W, 6-0
3-4	Fri	* Virginia Tech	ACCN	L, 1-6
3-5	Sat	* Virginia Tech	ACCNX	L, 0-4
3-6	Sun	* Virginia Tech	ACCNX	L, 2-4
3-9	Wed	Mercer	ACCNX	W, 3-0
3-12	Sat	! Illinois	ACCNX	W, 3-1
3-13	Sun	! Illinois	ACCNX	W, 4-0
3-13	Sun	! Liberty	ACCNX	W, 5-4 (8)
3-14	Mon	! Liberty	ACCNX	W, 1-0 (8)
3-15	Tue	Winthrop	ACCNX	W, 8-0 (5)
3-18	Fri	* at Duke	ACCNX	L, 2-6
3-19	Sat	* at Duke	ACCNX	W, 10-2 (5)
3-20	Sun	* at Duke	ACCN	L, 1-7
3-23	Wed	at Georgia	SECN	L, 2-3
3-25	Fri	* Louisville	ACCNX	W, 5-2
3-26	Sat	* Louisville	ACCN	W, 8-0 (5)
3-27	Sun	* Louisville	ACCN	L, 2-4 (8)
3-30	Wed	South Carolina	ACCN	W, 8-1
4-1	Fri	* at North Carolina	ACCNX	W, 12-4
4-2	Sat	* at North Carolina	N/A	W, 7-0
4-3	Sun	* at North Carolina	ACCNX	W, 12-4 (5)
4-6	Wed	Furman	ACCNX	W, 3-2
4-6	Wed	Furman	ACCNX	W, 8-0 (5)
4-8	Fri	* at Pittsburgh	ACCN	W, 8-0 (5)
4-9	Sat	* at Pittsburgh	ACCNX	W, 6-5
4-10	Sun	* at Pittsburgh	ACCNX	W, 11-3 (5)
4-12	Tue	at South Carolina	ESPNU	W, 3-1
4-14	Thu	* Notre Dame	ACCNX	W, 3-2
4-15	Fri	* Notre Dame	ACCNX	L, 0-4
4-16	Sat	* Notre Dame	ACCNX	W, 2-1
4-21	Thu	* at Florida State	ESPN2	L, 4-5
4-22	Fri	* at Florida State	ACCN	L, 6-7
4-23	Sat	* at Florida State	ACCN	L, 0-6
4-27	Wed	ETSU	ACCNX	W, 6-2
4-29	Fri	* Georgia Tech	ACCNX	W, 4-1
4-30	Sat	* Georgia Tech	RSN	W, 3-0
5-1	Sun	* Georgia Tech	RSN	W, 3-2 (8)
5-12	Thu	^ Notre Dame	ACCN	W, 7-3
5-13	Fri	^ Virginia Tech	ACCN	W, 4-1
5-14	Sat	^ Florida State	ESPN	L, 6-8
5-20	Fri	& UNC Wilmington	ACCN	12 p.m.
5-21	Sat	TBA	TBA	TBA
5-26 - 5-29		NCAA Super Regionals	TBA	TBA
6-2 - 6-9		NCAA Women's College World Series	TBA	TBA

Note: Home games in **bold**; all times are Eastern

* - ACC regular-season game

\$ - FGCU Kickoff Classic (Fort Myers, Fla.)

% - St. Pete/Clearwater Elite Invitational (Clearwater, Fla.)

- Clemson Classic (Clemson, S.C.)

! - Tiger Invitational (Clemson, S.C.)

^ - ACC Championship (Pittsburgh, Pa.)

& - Clemson Regional (Clemson, S.C.)

ADDITIONAL MEDIA RESOURCES

- More information and a digital version of this set of game notes can be found by scanning the QR Code.



career win in the circle. She followed that on Saturday with her 500th career strikeout in only 84 appearances.

- Thompson hit a big milestone striking out her 150th batter in the series.
- Russ rounded out the Tigers when she stole her 22nd base on the year and 125th of her career vs. the Fighting Irish. Russ now has 25 stolen bases on the year (128 career) to hold Clemson's single-season record for stolen bases.
- Multiple other benchmarks have been reached including but not limited to: Cagle 100 runs, Pereira 100 runs and Guimbarda 175 RBIs. More can be found in the table on page five of these notes.

FIRST 100

- Clemson softball played its 100th game in program history on March 13 against Illinois at the Tiger Invitational. The Tigers won 4-0 behind Millie Thompson's first collegiate career shutout with a career-high 11 strikeouts.
- The 100th game was played almost five years to the date of the program being announced - program addition was announced on March 14, 2017.
- Through the first 100 games, the softball team paced itself to tie the best start by a program at Clemson. Softball ties women's tennis with 78 wins. Other sports at Clemson can be found below:

FIRST 100 GAMES - BY PROGRAM

Sport (1st Year)	Wins	Loss	Ties	Percentage
Softball (2020)	78	22	-	.780
Women's Tennis (1976)	78	22	-	.780
WBasketball (1975-76)	73	37	-	.730
Women's Soccer (1994)	69	29	2	.700
Volleyball (1977)	68	32	-	.680
Men's Soccer (1934)	63	27	10	.680
Baseball (1896)	60	36	4	.620
Football (1896)	58	34	8	.620
MBasketball (1911-12)	55	44	1	.555
Men's Tennis (1921)	47	48	5	.495

- Head Coach John Rittman's 78 wins in his first 100 games surpassed baseball's Monte Lee and football's Dabo Swinney as the active coach with the best record through the first 100 games. Coach Lee and Coach Swinney each were 74-26.
- Clemson hit its 100th win in program history in 130 games - this is the second fastest program to reach the 100 win mark after women's tennis did it in 128 matches. Other sports can be found below:

FIRST 100 WINS - BY PROGRAM

Sport (Season)	Wins	Loss	Ties	Total
Women's Tennis (1981)	100	28	-	128
Softball (2022)	100	30	-	130
Men's Soccer (1976)	100	33	10	143
Women's Soccer (2000)	100	39	4	143
WBasketball (1979-80)	100	49	-	149
Volleyball (1980)	100	59	-	159
Football (1955)	100	63	10	173
Men's Tennis (1947)	100	78	5	183
Baseball (1911)	100	83	5	188
MBasketball (1928-29)	100	135	1	236

- Coach Rittman became the fifth-fastest head coach to reach 100 wins at Clemson after accomplishing the feat in 130 games. Among active coaches, Coach Swinney is the only coach to reach 100 wins faster (129).

MCKENZIE "PIE" CLARK

- McKenzie Clark has been lights out during her sophomore campaign.
- Clark, best known by her nickname "Pie," has been productive in the lineup in the second spot.
- Clark led the Tigers with a .356 in conference play clocking 26 hits - including nine home runs - 19 runs scored and 19 RBIs.

- On the season, Clark is batting a team-high .327 off 54 hits with 31 RBIs and 39 runs scored. She has also stolen six bases and hit 11 home runs - including an inside the park homer vs. Akron.
- She has reached base in 43 games this season.
- During the regular season at FSU, Clark hit three home runs in a single game bringing in four RBIs to be only the second Tiger to hit three homers in a single game in program history.
- In the ACC Championship game, she went 4-for-4 with two RBIs and one run scored.
- Defensively, Clark is one of three consistent starters that has posted a perfect 1.000 fielding percentage covering the center field grass with ease and grace putting her on pace to be in the top running for an inaugural Golden Glove Award. She has 50 putouts and four assists.

CAGLE CALLS GAME

- Valerie Cagle was named a 2022 USA Softball Player of the Year Top 25 Finalist in April for the second consecutive year.
- Prior to 2022, Cagle was named a Preseason First Team All-American by D1Softball and Softball America.
- Cagle threw a complete-game shutout against the No. 6/5 Huskies with 10 strikeouts and hit a solo homer in the sixth inning to upset Washington.
- In the first midweek against South Carolina, Cagle notched 11 strikeouts in the circle and kicked off the game with a three-run homer in the bottom of the first.
- She threw 6.1 hitless innings in the second game against Georgia Tech and picked up 10 strikeouts.
- Last season, Cagle became the first softball player in ACC history to be named both the Player and Freshman of the Year.
- She was named a NFCA Second Team All-American, a NFCA National Freshman of the Year Top-3 finalist and a USA Softball Collegiate Player of the Year Top 10 Finalist last season.

MILLIE ROCKED

- Sophomore left-handed pitcher Millie Thompson has come into her own in her second season with the program.
- She is posting a 1.69 ERA through 24 appearances and 103.1 innings pitched. She has three solo shutouts, the first three of her career, and has combined for five.
- She is second on the team with 13 wins and has struck out 99 batters while only allowing 85 hits and giving up only 15 walks.
- Thompson started the season throwing a combined no-hitter with teammate Regan Spencer.
- She followed that performance with her first solo career no-no against Furman in the second game of the doubleheader. She was one error away from throwing a perfect game that happened during the first batter of the game.
- She was named the ACC Pitcher of the Week and a notable performance by the NFCA after picking up a wins against ETSU and two against Georgia Tech in the final week of the regular season.
- Other notable performance from Thompson include: a 5.0 IP run-rule victory over No. 13 Duke with eight strikeouts and no walks; a nine-strikeout performance vs. Louisville; a career-high 11 strikeouts in shutout victory over Illinois.

FRESHMAN FORTE

- Freshman Aby Vieira and Maddie Moore have made themselves a crucial part of the Tiger lineup.
- Vieira is second on the team with a .316 average clocking 30 hits with three doubles and four home runs. She has 15 RBIs and 12 runs scored with a .474 slugging percentage.

NOTES

- She has been a vital part of the defense as well catching both no-hitters this season, Valerie Cagle's 50th career win and the upset over Washington.
- Moore is batting .189 after starting in 52 games with 17 hits and 23 runs scored. She also is third on the team with nine stolen bases.
- She hit a walk off single in the bottom of the eighth inning against Georgia Tech to clinch the sweep.

LO-GO-LEO

- Redshirt sophomore Alia Logoleo is a versatile player for the Tigers.
- During the ACC Championships, she batted .600 with six hits, three home runs, five RBIs and four runs scored
- Against North Carolina, Logoleo hit three home runs, including two in the opening game of the series. She hit one in the first game against South Carolina to be recognized by the NFCA as a notable performance in the NCAA that week.
- The first time Clemson was in Pittsburgh, Logoleo clocked two homers, including a three-run bomb in the seventh inning to complete Clemson's comeback victory over the Panthers.
- Logoleo has 14 home runs and 43 RBIs with a .293 average clocking 44 hits with 29 runs scored.

GUIMBARDA GREATNESS

- Graduate Marissa Guimbarda has been a key contributor to Clemson's offense over the past three seasons.
- Prior to her time in the Orange and Regalia, Guimbarda played two seasons at Furman.
- Most recently, she hit a three-run homer out of center field against ETSU. The homer brings her career total to 59.
- Guimbarda hit four home runs against North Carolina to earn ACC Player of the Week honors. She ranks seventh among action players in the NCAA for most home runs in her career.
- She hit 24 while at Furman and has 35 at Clemson.
- Guimbarda becomes the 196th player in NCAA Division I history to hit 50 homers during her collegiate career.

CONSISTENT CAMMY

- Cammy Pereira has been a consistent presence since signing to join Clemson's inaugural class being the Tigers' go-to face of the program in different situations.
- Pereira was recognized at the Clemson Board Meeting as a notable student-athlete having been the driving force to multiple Clemson initiatives including but not limited to: being the leader of the Tigers Unite affinity group CU Pride, spoken at several panels regarding issues in the LGBTQ community, participating in Clemson academic research, is a Paw Pal mentor and a student liaison for the We CU Committee for staff engagement.
- Following her time at Clemson, Pereira will attend medical school at Via College of Osteopathic Medicine beginning in July.
- Pereira became the third softball player at Clemson to be awarded the Weaver-James-Corrigan postgraduate scholarship by the ACC.
- On the field this season, Pereira has started every game at second base and maintains a .290 average with 30 runs scored and 23 RBIs.

DANGER(RUSS)

- Graduate transfer Sam Russ comes to Clemson to use her final year of eligibility.
- Russ decided to use her extra year at Clemson after her father, Frank Russ, played baseball for the Tigers from 1980-83 and her mom graduated from Clemson.
- Russ spent her first four years at NC State where she was a three-time ACC selection and holds the Wolf-pack's record for both career (103) and single season

(32) stolen bases.

- She currently ranks first in the NCAA among active D1 players for most career stolen bases (128) and sixth on the ACC list (103 + 25 = 128).
- She set Clemson's single-season record against Georgia Tech with 24 bases surpassing McKenzie Clark (23) that was set in 2021.
- Sam is a starter on the first Clemson softball team to host a regional. Her father Frank was a started on Clemson's baseball team the first time that program hosted a regional (1980).

YOUNG PROGRAM

- The Clemson softball team has accomplished multiple feats for being a program with only 133 games.
- Entering this season, the only players with over 100 collegiate games under their belts are transfers that began their careers at other programs. These players include Marissa Guimbarda, Grace Mattimore, Cammy Pereira, Sam Russ and Bailey Taylor.
- Six other players have surpassed the 100 games mark in their career during the 2022 season led by Valerie Cagle (133), Alia Logoleo (120) and Arielle Oda (119).
- The remaining 18 players on the 2022 roster have appeared in less than 100 games led by Kyah Keller (66).
- The Tigers won the ACC Regular Season Title in their first complete season in 2021 after the 2020 inaugural season was cut short due to COVID-19.
- In only three seasons, Clemson has played in two ACC Championship games and made two postseason appearances.

ACC POSTSEASON HONORS

- The Tigers had five players selected to All-ACC Teams: Valerie Cagle (First Team), McKenzie Clark (Second), Alia Logoleo (Third), Millie Thompson (Third) and Aby Vieira (All-Freshman).
- Cagle, Clark, Logoleo and Thompson all earned post-season honors for the second time in their careers.
- Cagle, Clark and Logoleo were also named to the ACC All-Tournament Team.

ACC PRESEASON HONORS

- The Tigers have been picked to finish second in the ACC
- Clemson pitcher Valerie Cagle and outfielder McKenzie Clark were named to the 2022 Preseason All-ACC Team based on vote by the league's head coaches.
- Cagle returns after being named the ACC Player and Freshman of the Year in 2021. She batted .404 with a .821 slugging percentage and 17 home runs. She also led the Tigers with a 1.16 ERA and 267 strikeouts.
- Clark had a breakout freshman season posting a .355 average and .639 slugging percentage. She stole a team-high 23 bases in 2021 and was an NFCA All-Region Selection.

CLEMSON+

- Clemson Athletics and IPTAY have launched Clemson+, a streaming service dedicated to showing what it's like to be a Tiger.
- Clemson+ showcases the best video content, and is now available on all major streaming platforms, via the Clemson Tigers app and web browser.
- The subscription will be included as an exclusive benefit to more than 26,000 IPTAY and Collegiate Club members.
- Clemson softball will be apart of the initial launch of Clemson+ with a Clemson Softball All-Access feature.
- Get an inside look at the day-to-day aspects of the Clemson softball program and exclusive interviews with the coaching staff and student-athletes.

TIGER TIDBITS

Category	Record
Record	39-15
ACC Record	14-10
Non-Conference Record	25-5
Versus Top 25 (NFCA)	7-13
Versus Top 10 (NFCA)	2-8
Versus Top 5 (NFCA)	1-4
In February	11-3
In March	11-7
In April	14-4
In May	3-1
On Monday	1-0
On Tuesday	3-0
On Wednesday	6-1
On Thursday	4-1
On Friday	9-5
On Saturday	10-5
On Sunday	6-3
In Day Games	24-7
In Night Games	15-8
In 1-Run Games	8-4
In 2-Run Games	4-3
In 5+ Run Games	17-4
After a Loss	8-6
After a Win	30-8
In Extra Innings	4-2
Shutouts	17-5
Scoring First	30-7
Scoring in the 1st Innings	18-4
Leading After 4	29-6
Trailing After 4	4-7
Tied After 4	6-2
Leading After 5	18-4
Trailing After 5	4-9
Tied After 5	6-2
Leading After 6	20-1
Trailing After 6	4-12
Tied After 6	3-2
Scoring 5 or More Runs	24-2
Allowing 5 or More	2-8
Out-hit opponent	31-4
Opponent out-hit	5-10
Hits are equal	3-1
Make 0 errors	15-3
Make 1 error	19-6
Make 2+ error	5-6
Opp. makes 0 errors	11-5
Opp. makes 1 error	14-5
Opp. makes 2+ errors	14-5

MEDIA SERVICES

CLEMSON ATHLETIC COMMUNICATIONS

Contact	Valerie Johnson (Central Michigan '18)
Email	vjohns4@clemson.edu
Cell Phone	712-269-4149
Ticket Office Phone	1-800-CLEMSON
Website	ClemsonTigers.com
Social Media	ClemsonSoftball

ACC MEDIA RELATIONS

Justin Wilson is the softball athletic communications contact at the ACC office. He can be reached at 336.369.3713 or at jwilson@acc.org.

CREDENTIALS

Members of the working press who desire a media credential to a Clemson softball home game ClemsonTigers.com/softball under Media Resources. There is limited space for writers inside McWhorter Stadium. Members of the media must request a pass at least 24 hours prior to each game to be considered for admittance.

WEBSITE & SOCIAL MEDIA

Up-to-date stats, notes, stories and box scores can be found on Clemson's official website (ClemsonTigers.com). Live online video, live audio and live stats can be accessed on the ClemsonTigers.com softball schedule page. Fans can also follow ClemsonSoftball on Twitter, Instagram and Facebook.

NOTES

HOME RUNS

#	Player ^(#)	Opponent (Date)	OB	Inn.	Outs
1.	Pereira ⁽¹⁾	\$ at FGCU (2-10)	0	2	0
2.	Cagle ⁽¹⁾	\$ at FGCU (2-10)	2	5	1
3.	Logoleo ⁽¹⁾	\$ vs. Kent State (2-11)	2	1	2
4.	Cagle ⁽²⁾	\$ vs. LIU (2-12)	2	6	2
5.	Guimbarda ⁽¹⁾	% vs. No. 18 Tennessee (2-18)	0	3	2
6.	Cagle ⁽³⁾	% vs. No. 6 Washington (2-20)	0	6	2
7.	Guimbarda ⁽²⁾	at Charlotte (2-23)	1	4	0
8.	Guimbarda ⁽³⁾	# Boston University (2-25)	1	2	0
9.	Logoleo ⁽²⁾	# Boston University (2-25)	1	5	1
10.	Vieira ⁽¹⁾⁺	# Akron (2-26)	3	1	2
11.	Clark ⁽¹⁾⁺	# Akron (2-26)	0	3	2
12.	Moore ⁽¹⁾	# Boston University (2-26)	1	3	2
13.	Cagle ⁽⁴⁾	Gardner-Webb (3-1)	2	3	0
14.	Guimbarda ⁽⁴⁾	Gardner-Webb (3-1)	0	3	0
15.	Cagle ⁽⁵⁾	* Virginia Tech (3-6)	0	7	0
16.	Guimbarda ⁽⁵⁾	! Illinois (3-13)	2	3	2
17.	Russ ⁽¹⁾	! Liberty (3-13)	0	1	1
18.	Cagle ⁽⁶⁾	Winthrop (3-15)	0	1	2
19.	Logoleo ⁽³⁾	Winthrop (3-15)	2	3	2
20.	Cagle ⁽⁷⁾	Winthrop (3-15)	2	4	2
21.	Clark ⁽²⁾	* at Duke (3-18)	0	6	0
22.	Russ ⁽²⁾	* at Duke (3-20)	0	7	1
23.	Pereira ⁽²⁾	at Georgia (3-23)	0	2	2
24.	Logoleo ⁽⁴⁾	* Louisville (3-26)	2	2	2
25.	Clark ⁽³⁾	* Louisville (3-26)	0	3	1
26.	Cagle ⁽⁸⁾	* Louisville (3-26)	0	3	1
27.	Clark ⁽⁴⁾	* Louisville (3-26)	0	5	0
28.	Cagle ⁽⁹⁾	South Carolina (3-30)	2	1	0
29.	Logoleo ⁽⁵⁾	South Carolina (3-30)	0	5	2
30.	Cagle ⁽⁵⁾	South Carolina (3-30)	0	6	1
31.	Logoleo ⁽⁶⁾	* North Carolina (4-1)	2	1	2
32.	Veira ⁽²⁾	* North Carolina (4-1)	0	4	0
33.	Logoleo ⁽⁷⁾	* North Carolina (4-1)	3	7	1
34.	Guimbarda ⁽⁶⁾	* North Carolina (4-2)	1	3	0
35.	Moore ⁽²⁾	* North Carolina (4-2)	0	4	0
36.	Guimbarda ⁽⁷⁾	* North Carolina (4-2)	2	4	1
37.	Guimbarda ⁽⁸⁾	* North Carolina (4-3)	0	2	0
38.	Logoleo ⁽⁸⁾	* North Carolina (4-3)	1	2	0
39.	Veira ⁽³⁾	* North Carolina (4-3)	0	2	0
40.	Guimbarda ⁽⁹⁾	* North Carolina (4-3)	1	5	2
41.	Guimbarda ⁽¹⁰⁾	Furman ¹ (4-6)	1	7	2
42.	Oda ⁽¹⁾	Furman ² (4-6)	1	2	0
43.	Clark ⁽⁵⁾	* Pitt (4-8)	0	4	2
44.	Logoleo ⁽⁹⁾	* Pitt (4-8)	1	5	1
45.	Pereira ⁽³⁾	* Pitt (4-9)	0	5	1
46.	Clark ⁽⁷⁾	* Pitt (4-9)	0	7	1
47.	Logoleo ⁽¹⁰⁾	* Pitt (4-9)	2	7	2
48.	Pereira ⁽⁴⁾	* Pitt (4-10)	2	3	0
49.	Taylor ⁽¹⁾	* Pitt (4-10)	0	5	0
50.	Veira ⁽⁴⁾	* Florida State (4/21)	0	5	0
51.	Cagle ⁽¹⁰⁾	* Florida State (4/21)	0	6	1
52.	Logoleo ⁽¹¹⁾	* Florida State (4/21)	0	7	0
53.	Clark ⁽⁸⁾	* Florida State (4/22)	0	1	1
54.	Clark ⁽⁹⁾	* Florida State (4/22)	1	3	0
55.	Clark ⁽¹⁰⁾	* Florida State (4/22)	0	5	1
56.	Guimbarda ⁽¹¹⁾	East Tennessee State (4/27)	2	1	1
57.	Clark ⁽¹¹⁾	* Georgia Tech (4/29)	1	1	0
58.	Cagle ⁽¹²⁾	* Georgia Tech (4/29)	0	3	0
59.	Logoleo ⁽¹²⁾	^ Notre Dame (5/12)	1	2	1
60.	Pereira ⁽⁵⁾	^ Notre Dame (5/12)	0	5	1
61.	Cagle ⁽¹²⁾	^ Notre Dame (5/12)	0	7	1
62.	Logoleo ⁽¹³⁾	^ Virginia Tech (5/13)	0	2	2
63.	Logoleo ⁽¹⁴⁾	^ Virginia Tech (5/13)	0	7	0
64.	Russ ⁽³⁾	^ Florida State (5/14)	0	4	0

+ - Grand Slam
++ - Inside the Park Home Run

CLEMSON VS. RANKED TEAMS

2020						
Date	Opponent	CU NFCA, ESPN	Opp. NFCA, ESPN	W-L	Score	
2-26	Georgia	NR	14, 15	W	4-1	
2021						
Date	Opponent	CU NFCA, ESPN	Opp. NFCA, ESPN	W-L	Score	
2-18	* Virginia Tech	RV, N/A	14, 15	W	8-1	
2-19	* Virginia Tech ⁽¹⁾	RV, N/A	14, 15	L (5)	0-9	
2-19	* Virginia Tech ⁽²⁾	RV, N/A	14, 15	L	1-4	
3-26	* Duke ⁽¹⁾	20, 21	11, 12	L	0-2	
3-26	* Duke ⁽²⁾	20, 21	11, 12	L	1-3	
3-27	* Duke	20, 21	11, 12	W	4-1	
3-28	* Duke	20, 21	11, 12	W	4-2	
5-14	^ Virginia Tech	13, 10	20, 20	W	2-0	
5-15	^ Duke	13, 10	21, 21	L	0-1	
5-22	! Alabama	13, 10	3, 3	L	0-6	
5-23	! Alabama	13, 10	3, 3	L	0-5	
2022						
Date	Opponent	CU NFCA, ESPN	Opp. NFCA, ESPN	W-L	Score	
2-11	Texas	15, 14	10, 8	L	0-4	
2-18	Tennessee	15, 12	18, 15	W (9)	4-3	
2-19	Northwestern	15, 12	RV, 23	L	0-7	
2-20	Washington	15, 12	6, 5	W	2-0	
3-4	* Virginia Tech	14, 9	6, 6	L	0-6	
3-5	* Virginia Tech	14, 9	6, 6	L	0-4	
3-6	* Virginia Tech	14, 9	6, 6	L	2-4	
3-18	* Duke	17, 15	13, 8	L	2-6	
3-19	* Duke	17, 15	13, 8	W (5)	10-2	
3-20	* Duke	17, 15	13, 8	L	1-7	
3-23	Georgia	16, 15	17, 21	L	2-3	
4-14	* Notre Dame	16, 16	23, 25	W	3-2	
4-15	* Notre Dame	16, 16	23, 25	L	0-4	
4-16	* Notre Dame	16, 16	23, 25	W	2-1	
4-21	* Florida State	17, 17	5, 5	L	4-5	
4-22	* Florida State	17, 17	5, 5	L	6-7	
4-23	* Florida State	17, 17	5, 5	L	0-6	
5-12	* Florida State	15, 15	19, 21	W	7-3	
5-13	^ Virginia Tech	15, 15	2, 2	W	4-1	
5-14	^ Florida State	15, 15	3, 3	L	6-8	
Bold denotes home game						
* - ACC regular-season game; ^ - ACC Championship; ! - Regionals						
Total					12-20	
Home					6-8	
Away					1-8	
Neutral					5-4	
Non-Conference					3-5	
ACC Only					9-15	

TEAM SUPERLATIVES

OFFENSE	
At bats	34, at Charlotte (Feb. 23)
Runs scored	12, 2x, at North Carolina (Apr. 3)
Hits	13, 2x, at North Carolina (Apr. 1)
RBI	12, at North Carolina (Apr. 1)
Doubles	6, at Charlotte (Feb. 23)
Triples	2, vs. Texas Tech (Feb. 17)
Home runs	4, 2x, at North Carolina (Apr. 3)
Walks	8, 2x, at North Carolina (Apr. 3)
Strikeouts	13, Virginia Tech (Mar. 6)
Sac flies	1, 9 times
Stolen bases	6, Furman (Apr. 6)
Hit by pitch	4, at North Carolina (Apr. 2)
FIELDING	
Putouts	27, vs. Tennessee (Feb. 18)
Assists	15, Notre Dame (Apr. 14)
Errors	4, Virginia Tech (Mar. 5)
DPs turned	3, Mercer (Mar. 9)
PITCHING	
Innings pitched	9.0, vs. Tennessee (Feb. 18)
Runs allowed	8, vs. Florida State (May 14)
Earned runs	7, 2x, vs. Florida State (May 14)
Walks allowed	6, 2x, vs. Florida State (May 14)
Strikeouts	13, 2x, Gardner-Webb (Mar. 1)
Hits allowed	12, 2x, Notre Dame (Apr. 16)

LAST TIME..

OFFENSE	
Hit two HRs in a game	Alia Logoleo (vs. Virginia Tech, 5/13/22)
Hit three HRs in a game	McKenzie Clark (at Florida State, 4/22/22)
Hit two HRs in an inning	N/A
Hit grand slam	Alia Logoleo (at North Carolina, 4/1/22)
Leadoff HR [inning]	Sam Russ (vs. Florida State, 5/13/22)
Walkoff HR	Marissa Guimbarda (Furman, 4/6/22)
Walkoff HR [run rule]	Alia Logoleo (Boston U, 2/25/22)
Pinch-hit HR	N/A
Inside the Park HR	McKenzie Clark (Akron, 2/26/22)
HR in back-to-back games	Alia Logoleo (vs. Notre Dame, 5/12/22) & vs. Virginia Tech, 5/13/22
Back-to-back HRs	Alia Logoleo & Aby Vieira (at UNC, 4/3/22)
Two doubles in a game	Valerie Cagle (Georgia Tech 5/1/22)
Three doubles in a game	N/A
Two triples in a game	N/A
Hit for the cycle	N/A
Four hits in a game	McKenzie Clark (vs. Florida State, 5/13/22)
Drove in five runs	Marissa Guimbarda (at North Carolina, 4/2/22)
Drove in six runs	Valerie Cagle (at FGCU, 2/10/22)
Drove in seven runs	N/A
Drove in eight runs	Alia Logoleo (at North Carolina, 4/1/22)
Drove in 10 runs	Alia Logoleo (at Syracuse, 5/9/21)
Scored four runs	Alia Logoleo (at Syracuse, 5/9/21)
Walkoff hit [non-HR]	Maddie Moore (Georgia Tech, 5/1/22 -- single)
Walkoff [non-hit]	Valerie Cagle (Notre Dame, 4/14/22 -- fielder's choice)
Walkoff [pinch hitter]	Kyah Keller (Liberty, 3/13/22 -- single)
PITCHING	
Threw a no-hitter	Millie Thompson (5.0 IP, Furman, 4/6/22)
Threw a combined no-hitter	Regan Spencer & Millie Thompson (5.0 IP) vs. Kent State, 2/11/22
Threw a perfect game	N/A
Threw a solo shutout	Valerie Cagle (Georgia Tech 4/30/22)
Had 14 strikeouts	Valerie Cagle (Georgia Tech, 5/13/21)
Had 13 strikeouts	Valerie Cagle (vs. Tennessee, 2/18/22)
Had 12 strikeouts	Valerie Cagle (at North Carolina, 4/1/22)
Had 11 strikeouts	Valerie Cagle (South Carolina, 3/30/22)
Had 10 strikeouts	Valerie Cagle (Georgia Tech 4/30/22)
Pitched >7 innings	Valerie Cagle (8.0 IP, vs. Liberty, 3/13/22)
TEAM	
Won 10 straight games	2022 (11: Mar. 30 - Apr. 14)
Won 15 straight games	2021 (19: Mar. 27 - May 8)
Won 20 straight games	N/A
Extra-Innings victory	5/1/22, No. 18 Clemson 3, Georgia Tech 2 (8 Inn.)
Extra-Innings loss	3/27/22, No. 16 Clemson 2, Louisville 4 (8 Inn.)
Played 11 innings	3/19/21, No. 23 Clemson 4, at Louisville 0
Played 10 innings	N/A
Played nine innings	2/18/22, No. 15 Clemson 4, No. 18 Tennessee 3
Played eight innings	5/1/22, No. 18 Clemson 3, Georgia Tech 2
Was no-hit	4/15/22, No. 16 Clemson 0, No. 23 Notre Dame 4
Was shut out	4/23/22, No. 17 Clemson 0, No. 5 Florida State 6
Beat a ranked opponent	5/13/22, No. 15 Clemson 4, No. 2 Virginia Tech 1
Beat a top-10 opponent	5/13/22, No. 15 Clemson 4, No. 2 Virginia Tech 1
Beat top-10 ACC opponent	5/13/22, No. 15 Clemson 4, No. 2 Virginia Tech 1
Run-ruled a ranked opponent	3/19/22, No. 17 Clemson 10, No. 13 Duke 2
Tied an opponent	N/A
PLAYER SUPERLATIVES	
OFFENSE	
At bats	5, 2x, McKenzie Clark (vs. Tennessee - Feb. 18)
Runs scored	4, McKenzie Clark (at FGCU - Feb. 10)
Hits	4, 2x, McKenzie Clark (vs. Florida State - May 14)
RBI	8, Alia Logoleo (at North Carolina - Apr. 1)
Doubles	2, 5 times
Triples	1, 11 times
Home runs	3, McKenzie Clark (at Florida State - Apr. 22)
Walks	3, Valerie Cagle (Akron - Feb. 26)
Strikeouts	3, 6 times
Sac flies	1, 9 times
Stolen bases	2, 5 times
Hit by pitch	2, 3x, Sam Russ (North Carolina - Apr. 2)
FIELDING	
Putouts	14, Bailey Taylor (Notre Dame - Apr. 14)
Assists	6, 6 times
Errors	2, 4 times
PITCHING	
Innings pitched	9.0, Valerie Cagle (vs. Tennessee - Feb. 18)
Runs allowed	8, Valerie Cagle (vs. Florida State - May 14)
Earned runs	7, Valerie Cagle (vs. Florida State - May 14)
Walks allowed	6, Valerie Cagle (vs. Florida State - May 14)
Strikeouts	13, Valerie Cagle (vs. Tennessee - Feb. 18)
Hits allowed	9, 3x, Valerie Cagle (Notre Dame - Apr. 16)

ROSTER

NUMERICAL

#	Player	Pos.	B/T	Yr.	Ht.	Hometown	Previous School / High School
1	Rachel Gibson	RHP	R-R	Fr.	5-9	Ringgold, Ga.	Heritage HS
2	Brooke McCubbin	RHP/INF	R-R	Fr.	5-10	Locust Grove, Ga.	Locust Grove HS
3	Sam Russ	OF	L-R	+Gr.	5-8	Charlotte, N.C.	NC State / Providence Day HS
4	Aby Vieira	C/UTL	L-R	Fr.	5-9	Mission Viejo, Calif.	Mission Viejo HS
5	Ansley Houston	INF	R-R	So.	5-6	Grantville, Ga.	Newnan HS
6	Carlee Shannon	OF	R-R	**So.	5-7	Chester, S.C.	York Comprehensive HS
7	McKenzie Clark	OF	R-R	So.	5-5	Myakka City, Fla.	Lakewood Ranch HS
8	Grace Hiller	INF/OF	R-R	Fr.	5-9	Macon, Ga.	Tattnal Square Academy
9	Sarah Howell	C/UTL	R-R	So.	5-4	Oxford, Ala.	Oxford HS
10	Emma Whitfield	RHP	L-R	*So.	5-9	Toccoa, Ga.	Stephens County HS
11	Haylee Whitesides	RHP/INF	R-R	Fr.	5-5	Duncan, S.C.	Byrnes HS
12	Cammy Pereira	INF/OF	L-R	**Gr.	5-6	Winston-Salem, N.C.	Furman University / West Forsyth HS
13	Abi Stuart	C/UTL	R-R	*So.	5-9	Snow Camp, N.C.	Southern Alamance HS
15	Madison May	OF/INF	R-R	*So.	5-9	Valdosta, Ga.	Lowndes HS
16	Alia Logoleo	INF/OF	R-R	*So.	5-8	Nashville, Tenn.	Hillsboro HS
17	Regan Spencer	RHP	R-R	So.	5-11	Lexington, N.C.	North Davidson HS
18	Bailey Taylor	INF	R-R	*Gr.	5-7	Winnsboro, S.C.	Troy University / Richard Winn Academy
19	Jaden Cheek	INF/OF	R-R	So.	5-9	Carnesville, Ga.	Franklin County HS
21	Jadeyn Ruszkowski	INF	L-L	Fr.	5-8	Lithia, Fla.	Newsome HS
23	JoJo Hyatt	C	R-R	**So.	5-8	Buford, Ga.	Buford HS
24	Arielle Oda	OF/INF	L-R	**So.	5-4	Buford, Ga.	Buford HS
25	Marissa Guimbarda	UTL	R-R	*Gr.	5-6	Suwanee, Ga.	Furman University / Lambert HS
27	Grace Mattimore	C/UTL	R-R	*Gr.	5-7	Ashburn, Va.	Army West Point / Broad Run HS
28	Maddie Moore	INF	R-R	Fr.	5-7	Loomis, Calif.	Del Oro HS
42	Morgan Johnson	OF	R-R	*So.	6-1	Evans, Ga.	Evans HS
58	Kyah Keller	INF	R-R	*So.	6-0	Hollywood, Ala.	Battle Ground Academy
72	Valerie Cagle	P/UTL	L-R	*So.	5-9	Yorktown, Va.	Homeschooled
77	Hannah Goodwin	INF	R-R	**Fr.	5-8	West Columbia, S.C.	White Knoll HS
87	Millie Thompson	LHP/INF	L-L	So.	5-7	Bedford, Va.	Liberty HS

Head Coach:

John Rittman (3rd season • New Mexico State '86)

Associate Head Coach:

Kyle Jamieson (3rd season • Brock University '97, Nipissing University '98)

Assistant Coach:

Courtney Breault (3rd season • Nebraska '13, Clemson '21)

Volunteer Assistant Coach:

Reese Jacobs (3rd season • Georgia Southern '79, Tennessee '81)

Graduate Assistant Coach:

Alyssa Bilodeau (1st season • Jacksonville '21)

Director of Operations:

Jeannie Murphy (3rd season • Oklahoma '10, Concordia University Irvine '14)

Student Manager:

Amanda Fitzwilliam (2nd season • Clemson '24)

Student Manager:

Anna Johnson (1st season • Clemson '23)

Student Manager:

Olivia Turpin (1st season • Clemson '24)

Associate AD/Sport Supervisor:

Natalie Honnen (3rd season • University of Florida '03 & '05)

Athletic Trainer:

Katie Rovtar (3rd season • University of Toledo '06, Virginia Tech '08)

Strength & Conditioning Coach:

Ryan Metzger (3rd season • University of Wisconsin-Oshkosh '11, University of Kentucky '15)

Athletic Communications Contact:

Valerie Johnson (1st season • Central Michigan '18)

Academic Advisor:

Kayla Velasquez (1st season • Bowling Green '17, Northwestern State '19)

Assistant Director of Equipment:

Ben Miller (3rd season • Clemson '16 & '18)

Supervisor of Athletic Grounds:

Mike Echols (3rd season • Clemson '85)

* - one redshirt; + - transfer using extra year of eligibility granted due to Covid-19; Note: "Gr." denotes senior unless otherwise noted.

ALPHABETICAL

#	Player	Pos.	Cl.
72	Valerie Cagle	RHP/UTL	* So.
19	Jaden Cheek	INF/UTL	So.
7	McKenzie Clark	OF	So.
1	Rachel Gibson	RHP	Fr.
77	Hannah Goodwin	INF	*So.
25	Marissa Guimbarda	OF/UTL	*Sr.
8	Grace Hiller	INF/OF	Fr.
5	Ansley Houston	INF	So.
9	Sarah Howell	C/UTL	So.
23	JoJo Hyatt	C	**So.
42	Morgan Johnson	OF	*So.
58	Kyah Keller	INF	*So.
16	Alia Logoleo	OF	*So.
27	Grace Mattimore	C/UTL	*So.
15	Madison May	INF/OF	*So.
2	Brooke McCubbin	RHP/INF	Fr.
28	Maddie Moore	INF	Fr.
24	Arielle Oda	INF/OF	**So.
12	Cammy Pereira	INF/OF	**Sr.
3	Sam Russ	OF	+Gr.
29	Jaden Ruszkowski	INF	Fr.
6	Carlee Shannon	OF	**So.
17	Regan Spencer	RHP	So.
13	Abi Stuart	C/UTL	So.
18	Bailey Taylor	INF	*So.
87	Millie Thompson	LHP/INF	So.
4	Aby Vieira	C/UTL	Fr.
11	Haylee Whitesides	RHP/INF	Fr.
10	Emma Whitfield	RHP	*So.

PRONUNCIATIONS

#	Name	Pronunciation
4	Aby Vieira	vee-AIR-uh
12	Cammy Pereira	puh-RAYR-uh
16	Alia Logoleo	lo-guh-LAY-oh
21	Jadeyn Ruszkowski	russ-COW-ski
24	Arielle Oda	OH-duh
25	Marissa Guimbarda	GUHM-bar-duh
87	Millie Thompson	MILL-ee
	Kyle Jamieson	pronounced like, "Jamison"
	Courtney Breault	BREE-ahlt
	Katie Rovtar	ROHV-tahr

HONORS

#4 ABY VIEIRA • C • FR.

- ACC All-Freshman Team

#7 MCKENZIE CLARK • OF • SO.

- Preseason All-ACC selection
- Second Team All-ACC & ACC All-Tournament Team

#16 ALIA LOGOLEO • INF • *SO.

- Third Team All-ACC & ACC All-Tournament Team

#72 VALERIE CAGLE • RHP/UT • *SO.

- Preseason All-ACC selection
- First Team All-ACC & All-ACC Tournament Team
- USA Softball Collegiate Player of the Year Top 50 Watch List
- USA Softball Collegiate Player of the Year Top 25 selection
- No. 6 on Extra Innings Softball's Extra Elite 100 list
- No. 19 on SA's 2022 Preseason College Top 100 list
- Preseason D1Softball.com First Team All-American
- Preseason Softball America First Team All-American

#87 MILLIE THOMPSON • LHP • SO.

- Third Team All-ACC

CAREER MILESTONES

Upcoming Milestone	Has	Needs
Marissa Guimbarda 60 home runs	*59	1
Marissa Guimbarda 200 RBIs	*175	25
Cammy Pereira 125 runs	*105	20
Cammy Pereira 25 stolen bases	*23	2
Sam Russ 175 runs	*155	20
Sam Russ 130 stolen bases	*128	2
Valerie Cagle 175 hits	150	25
Valerie Cagle 50 home runs	39	11
McKenzie Clark 100 runs	86	14
McKenzie Clark 50 stolen bases	29	21
Alia Logoleo 100 hits	90	10
Alia Logoleo 75 runs	58	17
JoJo Hyatt 75 hits	51	24
JoJo Hyatt 50 RBIs	27	23
Valerie Cagle 500 Innings Pitched	453	47
Valerie Cagle 600 strikeouts	520	80
Valerie Cagle 72 wins	52	20
Millie Thompson 200 strikeouts	169	31
Regan Spencer 75 strikeouts	54	21
*Clemson and Previous School Combined		

INDIVIDUAL RANKINGS

Player	Category	NCAA/ACC	Value
Regan Spencer	ERA	8/1	1.07
Team	ERA	10/1	1.87
Team	Shutouts	10/2	17
Millie Thompson	So/W Ratio	15/1	6.60
Sam Russ	Triples	18/2	5
Millie Thompson	Walks Per 7 IP	19/1	1.02
Team	So/W Ratio	20/2	3.68
Valerie Cagle	Saves	33/6	3
Millie Thompson	ERA	34/4	1.69
Team	HR Per Game	35/5	1.19
Player	Category (Career)	Rank (D1)	Value
Sam Russ	Stolen Bases	1	128
Marissa Guimbarda	Home Runs	7	59
Valerie Cagle	ERA	12	1.65
Sam Russ	Triples	17	12
Marissa Guimbarda	RBI	19	175
Valerie Cagle	Saves	21	9
Valerie Cagle	SO Per 7 IP	25	8.04
Cammy Pereira	Triples	26	11

HEAD COACH JOHN RITTMAN



John Rittman, a longtime head coach and member of the USA Softball Women's National Team coaching pool, was named the first Head Coach of Clemson Softball on Nov. 3, 2017. Rittman came to Clemson after serving as the Associate Head Coach at the University of Kansas from 2015-17. Rittman joined the Jayhawks after 18 seasons as the Head Coach at Stanford University and 10 years on the United States National Team coaching staff (2001-08, 2016-18).

During the second season and first complete year, Rittman propelled Clemson to even higher heights by becoming the ACC Regular Season Champions after posting a 29-5 ACC record and winning seven ACC series, including six series sweeps. The Tigers were ACC Tournament Runner-Ups after shutting out both Georgia Tech and then-No. 20 Virginia Tech in the first two rounds before dropping the championship game, 1-0, to then-No. 21 Duke. Rittman was named ACC Coach of the Year and guided Valerie Cagle to being the first student-athlete in league history to be named both the ACC Freshman and Player of the Year in the same season. Clemson finished with six individuals earning nine All-ACC team selections following the regular season, including three on the first team. Cagle and freshman McKenzie Clark were named to the NFCA All-Region team. The honors continued to roll in for Cagle as she became the first Clemson softball All-American garnering second team honors from the NFCA, was a JWOS First Team All-American, a Top-Three Finalist for the NFCA's National Freshman of the Year and a Top-10 Finalist for USA Softball's Collegiate Player of the Year. Behind Rittman's efforts, Clemson climbed as high as No. 13 in the NFCA national rankings and No. 10 in the ESPN/USA Softball rankings before finishing the season at No. 18 in the NFCA poll. Rittman led the Tigers to their first postseason appearance traveling to the Tuscaloosa Regional to defeat Troy twice, including a five-inning run-rule victory in the opening game that capped off a historic second season.

In its inaugural season, Rittman transcended Clemson into a nationally-respected program. Rittman guided Clemson, which was predicted to finish in 10th in the conference, according to the 2020 ACC preseason poll, to a 19-8 overall record, including 5-1 in ACC play. The Tigers, who won both of their ACC series against Virginia and Pitt, won 11 of their final 12 games before the 2020 season was cut short due to the coronavirus pandemic (COVID-19). Additionally, Clemson went 14-2 at Clemson Softball Stadium (now McWhorter Stadium), which included a 13-game home win streak that spanned 25 days. Rittman and the Tigers generated plenty of enthusiasm among the Clemson faithful as the first-year program ranked fourth nationally in attendance (24,860) and fifth in average attendance (1,544/game) in 2020. On March 3, the National Fastpitch Coaches Association (NFCA) announced the first-year program received votes (10) in the fifth edition of the 2020 USA Today/NFCA D1 Top 25 Coaches Poll. The announcement came after Clemson defeated then-No. 14 Georgia, 4-1, on Feb. 26 at Clemson Softball Stadium before sweeping the Cavaliers to win its first-ever ACC series. Under the direction of Rittman, three Tigers in Valerie Cagle (twice), Marissa Guimbarda and Logan Caymol earned

ACC weekly honors on four occasions, the most by any ACC program in 2020. Cagle, a true freshman in 2020, was second in the nation in RBIs (36), while Guimbarda finished the season fourth nationally in home runs (11). Both Cagle and Guimbarda led the ACC in RBIs and home runs, respectively.

At Stanford, Rittman and the Cardinals recorded 18-consecutive winning seasons, made 16-straight NCAA appearances, notched 13 40-win seasons and produced at least one All-American in 15 of his last 17 seasons. As head coach, Rittman accumulated a 750-351-3 overall mark, coached a national player of the year, 16 All-Americans, earned five Super Regional appearances, two Women's College World Series appearances and maintained a spot in every regular-season NFCA top-25 poll for more than a decade.

Rittman served on the staff of the USA Softball team which won gold at both the 2016 Women's Softball World Championship and the 2017 Pan Am Qualifier. He also worked with Team USA from 2001-08, coaching the 2004 Olympic gold medal winners in Athens and the 2008 silver medalists in Beijing. Team USA also won gold medals at the 2002 and 2006 World Championship and the 2003 and 2007 Pan Am Games.

Prior to being named head coach at Stanford, Rittman spent four seasons as an assistant coach at the University of Washington, focusing on hitting and defense. Rittman helped start the program and, within just four seasons, the Huskies had earned a No. 1 national ranking, won the 1996 Pac-10 Championship, made three NCAA Tournament appearances and notched a runner-up finish in their first trip to the Women's College World Series. Washington became the first team since Texas A&M (1983) to advance to the championship game in its first appearance at the WCWS.

Before his appointment at Washington, Rittman spent two seasons as an assistant at the University of Minnesota. During his second year, the Golden Gophers won the Big Ten Conference with a 20-4 league record. The Gophers set team and individual records in almost every offensive category. The Minnesota squad led the nation in hits and total bases en route to a No. 15 national ranking. Rittman also helped produce two Golden Gopher All-Americans.

From 1988-90, Rittman was an assistant coach at the University of Oregon. During his stay, the Ducks played in the 1989 Women's College World Series, set several team and individual offensive records and produced an All-American.

Rittman graduated from New Mexico State with a degree in journalism in 1986. He was a three-year letterwinner in baseball as an outfielder at NMSU after transferring from Yavapai Junior College in Prescott, Arizona.

Rittman and his wife, Lorie, a former softball player at the University of Oklahoma, are the parents of Justin, a UCLA graduate and former fullback for the Bruins, and Jake, a senior punter at Notre Dame.

HEAD COACH JOHN RITTMAN

Education: Bachelor's degree in journalism at New Mexico State (1986).

Playing Experience: Three-year letterman at New Mexico State (1984-86).

Coaching Experience: Assistant Coach at Oregon (1988-90) ... Assistant Coach at Minnesota (1991-92) ... Assistant Coach at Washington (1993-96) ... Head Coach at Stanford (1997-2014) ... Associate Head Coach at Kansas (2015, 2017) ... Head Coach at Clemson (2020-present).

Family: Wife, Lorie Rittman ... sons, Justin and Jake.



RITTMAN'S HEAD COACHING RECORD

Year	School	W-L	NCAA
1997	Stanford	31-27-1	
1998	Stanford	41-18	Regionals
1999	Stanford	40-25	Regionals
2000	Stanford	45-18	Regionals
2001	Stanford	54-16-1	World Series
2002	Stanford	44-20	Regionals
2003	Stanford	41-26	Regionals
2004	Stanford	49-19	World Series
2005*	Stanford	43-16	Super Regionals
2006	Stanford	42-18	Super Regionals
2007	Stanford	35-21-1	Regionals
2008	Stanford	49-15	Super Regionals
2009	Stanford	48-11	Super Regionals
2010	Stanford	37-19	Regionals
2011	Stanford	42-17	Super Regionals
2012	Stanford	40-19	Regionals
2013	Stanford	39-21	Regionals
2014	Stanford	30-25	
2020^	Clemson	19-8	N/A
2021*	Clemson	44-8	Regionals
2022	Clemson	39-15	

* - conference champion; ^ - season suspended March 12 and later canceled due to a coronavirus (COVID-19) pandemic

RITTMAN'S HEAD COACHING RECORD

School	Seasons	Years	W-L	Win %
Stanford	18	1997-2014	750-351-3	.681
Clemson	3	2020-22	102-31	.767
Totals	21	1997-2014, 2020-22	852-382-3	.690

RITTMAN VS. ACC AS CLEMSON HEAD COACH

Team	Overall	Home	Away	Neutral
Boston College	4-0	4-0	0-0	0-0
Duke	3-6	2-2	1-2	0-2
Florida State	0-4	0-0	0-3	0-1
Georgia Tech	7-0	3-0	3-0	1-0
Louisville	6-1	2-1	4-0	0-0
North Carolina	7-0	4-0	3-0	0-0
NC State	4-0	4-0	0-0	0-0
Notre Dame	3-1	2-1	0-0	1-0
Pittsburgh	5-1	2-1	3-0	0-0
Syracuse	3-1	0-0	3-1	0-0
Virginia	7-0	3-0	4-0	0-0
Virginia Tech	3-5	1-5	0-0	2-0
Totals	52-19	27-10	21-6	4-3

Note: Clemson's neutral-site games against Duke (Feb. 7, 2020) was not considered an ACC contest towards the league's standings.

2022 BROADCAST SHEET

1



RACHEL GIBSON

Fr. • RHP • 5-9 • Ringgold, Ga. • Heritage HS

	ERA	W-L	APP	CG	SHO	IP	SO
2022	99.00	0-0	1	0	0/0	0.0	0
Career	99.00	0-0	1	0	0/0	0.0	0

Season Highs: NP (22)

- Made first collegiate appearance against Akron
- D1 Softball Preseason Top 75 Impact Freshmen selection
- Prior to Clemson:
 - Two time GHSA 4A State Champion (2018, 2019)
 - Two time GHSA 4A Pitcher of the Year (2018, 2019)
 - Two time Best of Preps Softball Player of the Year (2018, 2019)
 - 2019 Georgia Dugout Club 4A Player of the Year

2



BROOKE McCUBBIN

Fr. • RHP/INF • 5-10 • Locust Grove, Ga. • Locust Grove HS

	ERA	W-L	APP	CG	SHO	IP	SO
2022	2.32	5-2	18	0	0/6	45.1	24
Career	2.32	5-2	18	0	0/6	45.1	24

Season Highs: IP (5.1), SO (5), NP (110)

- Pitched season-high 5.1 innings vs. Northwestern
- Season-high five strikeouts vs. Winthrop
- Has started in six games this season
- Prior to Clemson:
 - 2020 Georgia Softball Player of the Year
 - 2019 GACA State Pitcher of the Year
 - 2019 GADC State 5A Player of the Year

3



SAM RUSS

+Gr. • OF • 5-8 • Charlotte, N.C. • NC State (Providence Day HS)

	AVG	AB	RUNS	HITS	RBI	BB	SB
2022	.287	157	28	45	14	21	25
Career	.312	658	155	205	68	101	128

Season Highs: R (3), RBI (2, 3x), 3B (1, 5x), SB (2, 5x)

- Has 128 career stolen bases to lead the active NCAA D1 players and hold the Clemson single-season record (25)
- Had a sac fly and one hit vs. Virginia Tech on March 6
- Stolen two bases in five games this season
- Prior to Clemson:
 - Holds NC State's all-time record for career stolen bases (103) and single season record for stolen bases (32)

4



ABY VIEIRA (VEE-AIR-UH)

Fr. • C/UTL • 5-9 • Mission Viejo, Calif. • Mission Viejo HS

	AVG	AB	RUNS	HITS	RBI	BB	SB
2022	.316	95	12	30	15	6	0
Career	.316	95	12	30	15	6	0

Season Highs: H (3), RBI (4), R (2), HR (1, 4x)

- Appeared in a total of 38 games this season
- Went 3-for-3 with two doubles and a homer in FSU series opener
- Caught Spencer's and Thompson's combined no-hitter vs. Kent State
- Starting catcher in Clemson's upset over Washington
- Recorded first collegiate grand slam (and homer) against Akron
- Hit walk off single against Louisville on March 26 for run-rule victory
- Hit two home runs in series at North Carolina

5



ANSLEY HOUSTON

So. • INF • 5-6 • Grantville, Ga. • Newnan HS

	AVG	AB	RUNS	HITS	RBI	BB	SB
2022	.000	0	10	0	0	0	3
Career	.000	1	10	0	0	0	3

Season Highs: R (1, 10x), SB (1, 3x)

- Has appeared as a pinch runner in 26 games this season
- First collegiate stolen base against Virginia Tech (March 5)
- Scored her first collegiate run against Boston University on Feb. 25
- ACC Academic Honor Roll (2021)
- Scored walk off run on Saturday vs. Notre Dame to secure series victory

6



CARLEE SHANNON

**So. • OF • 5-7 • Chester, S.C. • York Comprehensive HS

	AVG	AB	RUNS	HITS	RBI	BB	SB
2022	.000	0	14	0	0	0	17
Career	.000	0	37	0	0	1	44

Season Highs: R (1, 14x), SB (1, 17x)

- Appeared in 45 games in 2022 as a pinch runner
- Holds Clemson's career stolen base record (44)
- Held a 19 stolen-base consecutive streak that ended in Clearwater, Fla. that began last season.
- Led the team in stolen-base percentage in 2021 (18-for-18)
- Started playing softball in high school after a career-ending gymnastics injury

7



McKENZIE CLARK

So. • OF • 5-5 • Myakka City, Fla. • Lakewood Ranch HS

	AVG	AB	RUNS	HITS	RBI	BB	SB
2022	.327	165	39	54	31	21	6
Career	.341	334	86	114	60	40	29

Season Highs: R (4), H (4, 2x), RBI (4) 2B (2), SB (1, 6x)

- Hit three home runs in a single game at FSU on April 22
- Recorded Clemson's first inside the park home run against Akron
- Went 4-for-4 against Akron with one stolen base
- Hit two home runs in the same game against Louisville (March 26)
- Went 3-for-4 against South Carolina on March 30 with a home run
- 2022 Preseason All-ACC selection
- NFCA All-Region Southeast selection

8



GRACE HILLER

Fr. • INF/OF • 5-9 • Macon, Ga. • Tattal Square Academy

	AVG	AB	RUNS	HITS	RBI	BB	SB
2022	-	-	-	-	-	-	-
Career	-	-	-	-	-	-	-

Season Highs:

- Prior to Clemson:
 - First Team All-7A Region
 - Led her HS in batting average, doubles and runs scored
 - Set HS single season batting average record (.515) in 2020
 - Selected for the Georgia Dugout Club Senior All-State Game

2022 BROADCAST SHEET

9



SARAH HOWELL

So. • C/UTL • 5-4 • Oxford, Ala. • Oxford HS

	AVG	AB	RUNS	HITS	RBI	BB	SB
2022	-	-	-	-	-	-	-
Career	.083	12	5	1	0	0	4

Season Highs:

- Out during 2022 season due to injury
- Appeared in 23 games in 2021
- Scored the Tigers' game-winning run in the Tigers' 5-4 win at Georgia Tech

10



EMMA WHITFIELD

**So. • RHP • 5-9 • Toccoa, Ga. • Stephens County HS*

	ERA	W-L	APP	CG	SHO	IP	SO
2022	7.00	0-0	1	0	0	1.0	1
Career	3.54	4-0	16	1	0	29.2	26

Season Highs: IP (1.0), NP (20)

- Made first appearance of 2022 against Akron
- Appeared in four games in 2021
- Registered a 3.94 ERA in 5.1 innings pitched
- Two time ACC Academic Honor Roll
- Earned the program's first-ever conference win in the circle against Virginia (Feb. 28, 2020)

11



HAYLEE WHITESIDES

Fr. • RHP/INF • 5-5 • Duncan, S.C. • Byrnes HS

	ERA	W-L	APP	CG	SHO	IP	SO
2022	-	-	-	-	-	-	-
Career	-	-	-	-	-	-	-

Season Highs:

- Prior to Clemson:
- Two time South Carolina 5A State Champion (2017, 2021)
- Two time member of the Spartanburg Herald Journal All-Area Team (2018, 2019)

12



CAMMY PEREIRA (puh-RAYR-UH)

***Gr. • INF/OF • 5-6 • Winston-Salem, N.C. • Furman (West Forsyth HS)*

	AVG	AB	RUNS	HITS	RBI	BB	SB
2022	.285	165	32	47	24	13	1
Career	.300	604	105	181	72	28	23

Season Highs: R (2, 4x), H (3, 4x), HR (1, 5x), RBI (3, 2x)

- Hit Clemson first home run of the 2022 season at FGCU
- Hit a solo home run at Georgia and two homers in series vs. Pitt
- Tallied three RBIs off two hits vs. Kent State
- Hit walk off single vs. Notre Dame to clinch the series victory on Saturday
- Has four games with three hits including Charlotte, Boston U, Liberty and Duke
- Is a Weaver-James-Corrigan postgraduate scholarship award recipient (2022)
- ACC All-Tournament Team in 2021

13



ABI STUART

**So. • C/UTL • 5-9 • Snow Camp, N.C. • Southern Alamance HS*

	AVG	AB	RUNS	HITS	RBI	BB	SB
2022	.000	4	1	0	0	2	0
Career	.243	107	15	26	19	9	0

Season Highs: R (1), BB (1, 2x)

- Has appeared in five games in 2022 (DP in 2, PR in 1, PH 2)
- Scored one run against Kent State and drew a walk at FGCU
- Played in 36 games, starting in 31 in 2021
- Hit .259 in 85 at bats with 10 runs and a .447 slugging percentage
- Posted an eight-game hitting streak, the third longest streak by any Tiger on the season
- Two time ACC Academic Honor Roll recipient

15



MADISON MAY

**So. • INF/OF • 5-9 • Valdosta, Ga. • Lowndes HS*

	AVG	AB	RUNS	HITS	RBI	BB	SB
2022	.200	25	2	5	4	9	0
Career	.147	34	2	5	4	10	0

Season Highs: AB (4), H (2), R (1, 2x), RBI (2), BB (2, 2x)

- Hit a RBI double against Charlotte
- Went 1-for-1 with a double, two RBIs, two walks and one run scored against Texas Tech
- Finished with two hits against Wisconsin
- Recorded first career hit and run against LIU
- Two time ACC Academic Honor Roll recipient
- Reached base on four-straight balls in only plate appearance of the 2021 season

16



ALIA LOGOLEO (lo-GUH-LAY-oh)

**So. • INF/OF • 5-8 • Nashville, Tenn. • Hillsboro HS*

	AVG	AB	RUNS	HITS	RBI	BB	SB
2022	.293	150	29	44	43	14	2
Career	.293	307	58	90	80	29	16

Season Highs: R (2, 5x), H (3, 3x), 2B (2), HR (2, 2x), RBI (8)

- Started at either SS or 3B every game this season
- Has 14 homers and 43 RBIs
- Came up with a clutch three-run homer vs. Pitt
- Tallied 11 RBIs in North Carolina series off three homers in three games
- Hit a two-run homer to open scoring against Louisville on March 26
- Hit two grand slams in 2021 (only player to record a grand slam last year)
- Hit a grand slam, a three-run homer, a two-run homer and a double at Syracuse

17



REGAN SPENCER

So. • RHP • 5-11 • Lexington, N.C. • North Davidson HS

	ERA	W-L	APP	CG	SHO	IP	SO
2022	1.07	6-2	22	1	1/4	59	34
Career	1.24	12-2	36	3	2/5	101.2	54

Season Highs: IP (7.0), SO (7), NP (84)

- Has six victories in the circle this season
- Pitched lights out vs. Notre Dame on Saturday to pick up a victory and clinch the series
- Threw Clemson's first combined no-hitter with Millie Thompson vs. Kent State
- Pitched 3.0 innings with four strikeouts against Kent State to earn the win
- Struck out three batters in 1.2 innings of work against Northwestern
- Earned the victory against Gardner-Webb after pitching 2.0 innings efficiently

2022 BROADCAST SHEET

18



BAILEY TAYLOR

*Gr. • INF • 5-7 • Winnsboro, S.C. • Troy (Richard Winn Academy)

	AVG	AB	RUNS	HITS	RBI	BB	SB
2022	.256	39	2	10	6	2	0
Career	.278	248	28	69	69	23	1

Season Highs: H (2, 2x), HPB (2), RBI (2), BB (2)

- Has started in 18 games this season and appeared in 29
- Hit solo home run on April 10 at Pitt
- Had two hits vs. Liberty on March 13
- Started the seventh inning rally in the opening game vs. Notre Dame
- Missed 2021 season due to injury
- Recorded a grand slam against Maryland helping Clemson become just the seventh program in NCAA Division I history to record two grand slams in a single inning

19



JADEN CHEEK

So. • INF/UTL • 5-9 • Carnesville, Ga. • Franklin County HS

	AVG	AB	RUNS	HITS	RBI	BB	SB
2022	-	-	2	-	-	-	1
Career	.100	10	13	1	0	0	3

Season Highs: R (1, 2x), SB (1)

- Has appeared in 10 games in 2022 as a pinch runner
- Scored first run of 2022 at North Carolina
- Stole first base of 2022 season vs. Furman
- Scored winning run vs. Notre Dame in opening game in walk off fashion
- Appeared in 39 games in 2021
- Made first career start as the Tigers' designated player against Furman
- Recorded first career hit on a single to right field against Furman

21



JADEYN RUSZKOWSKI (RUSS-COW-SKI)

Fr. • INF • 5-8 • Lithia, Fla. • Newsome HS

	AVG	AB	RUNS	HITS	RBI	BB	SB
2022	-	-	-	-	-	-	-
Career	-	-	-	-	-	-	-

Season Highs:

- Prior to Clemson:
- Two time District Champion
- Member of the 9A First Team All-State as a designated player
- Had a batting average of .652 as a junior in HS

23



JOJO HYATT

**So. • C • 5-8 • Buford, Ga. • Buford HS

	AVG	AB	RUNS	HITS	RBI	BB	SB
2022	.211	57	1	12	6	5	0
Career	.239	213	16	51	27	18	0

Season Highs: H (2, 2x), 3B (1), RBI (3), BB (1, 5x) PO (13)

- Has appeared in 29 games this season
- Hit the walk-off triple to run-rule Texas Tech to open the SPCEI with three RBIs
- Brought in two runners in Clemson's 4-3 win over Tennessee
- Started 50 games at catcher in 2021
- Hit .223 with four runs, a .266 slugging percentage and .291 on-base percentage
- Hit first career home run at Virginia (Mar. 7, 2021)
- Two time ACC Academic Honor Roll recipient

24



ARIELLE ODA (OH-DUH)

**So. • INF/OF • 5-4 • Buford, Ga. • Buford HS

	AVG	AB	RUNS	HITS	RBI	BB	SB
2022	.222	45	15	10	3	13	7
Career	.200	65	37	13	7	20	12

Season Highs: R (2), H (2), SB (1, 7x)

- Made a catch at the wall in right field and hit a single vs. Virginia Tech (3/6)
- Has appeared in 49 games this season
- Hit first career homer vs. Furman
- Tallied a single in the seventh vs. Notre Dame that helped provide the comeback victory in the opening game of the series
- Scored one of four runs in the sixth inning in the Tigers' 5-3 comeback win at Virginia (Mar. 6, 2021)

25



MARISSA GUIMBARDA (GUHM-BAR-DUH)

*Gr. • OF/UTL • 5-6 • Suwanee, Ga. • Furman (Lambert HS)

	AVG	AB	RUNS	HITS	RBI	BB	SB
2022	.275	149	19	41	38	26	1
Career	.301	591	87	178	175	90	3

Season Highs: R (2, 4x), H (3, 2x), RBI (5), BB (2, 7x)

- Recorded the hit that scored the first run in Clemson's win over Washington
- Hit her 59th career home run to become the 196th player in D1 history to accomplish surpassing 50 HR in her career and sits fifth on the NCAA career home run list for active players
- Is a Weaver-James-Corrigan postgraduate scholarship award recipient (2021)
- No. 91 preseason player by Extra Innings Softball and No. 86 by Softball America
- Tallied eight RBIs in North Carolina series

27



GRACE MATTIMORE

*Gr. • C/UTL • 5-7 • Ashburn, Va. • Army West Point (Broad Run HS)

	AVG	AB	RUNS	HITS	RBI	BB	SB
2022	.111	9	1	1	0	2	0
Career	.271	262	41	71	44	58	1

Season Highs: AB (2), 2B (1), R (1), BB (1, 2x)

- Recorded a double and scored vs. Virginia Tech on March 6
- Had sac bunt to spur Clemson's eight-run inning at Duke on March 19
- Drew a walk as a pinch hitter vs. Mercer
- Played left field and had two at bats vs. Gardner-Webb
- Started in 40 games in 2021
- Is a Weaver-James-Corrigan postgraduate scholarship award recipient
- Hit .333 in 66 at bats in 2020 and led the ACC with 10 doubles

28



MADDIE MOORE

Fr. • INF • 5-7 • Loomis, Calif. • Del Oro HS

	AVG	AB	RUNS	HITS	RBI	BB	SB
2022	.184	90	23	17	9	13	9
Career	.184	90	23	17	9	13	9

Season Highs: R (2, 3x), H (2), BB (2), SB (1, 8x)

- Has started in 52 games this season
- Recorded a hit and a run at FGCU on opening day
- Tallied a walk off single in extra innings vs Georgia Tech on May 1 to sweep the series
- Scored the winning run vs. Tennessee and the first run against Washington
- Hit first career home run against Boston University on 2/26 and second at North Carolina on 4/2

2022 BROADCAST SHEET

42



MORGAN JOHNSON

*So. • OF • 6-1 • Evans, Ga. • Evans HS

	AVG	AB	RUNS	HITS	RBI	BB	SB
2022	-	-	-	-	-	-	-
Career	.288	52	9	15	18	8	4

Season Highs:

- Out during 2022 season due to injury
- Read her "My Story" feature on ClemsonTigers.com - Johnson penned a letter to Jackie Robinson for Black History Month - will be feature on Sportscenter in April
- Appeared in 30 games in 2021 and hit .350 in 40 at bats with a .725 slugging percentage
- Two time ACC Academic Honor Roll recipient
- Member of Clemson's POWER - a Women's Leadership Academy

58



KYAH KELLER

*So. • INF • 6-0 • Hollywood, Ala. • Battle Ground Academy

	AVG	AB	RUNS	HITS	RBI	BB	SB
2022	.208	48	1	10	9	5	0
Career	.234	141	8	33	26	11	0

Season Highs: H (2), RBI (2, 2x), BB (1, 5x)

- Pinch hit a RBI single against LIU to spur Clemson's eight-inning scoring run in the sixth
- Had a walk off pinch hit single vs. Liberty to bring in two runners
- Hit .256 in 90 at bats with six runs and a .367 slugging percentage in 2021
- Recorded two homers in CU's 12-1 win against North Carolina while going 3-for-3 with a career-best four RBI
- Two time ACC Academic Honor Roll member

72



VALERIE CAGLE

*So. • RHP/UTL • 5-9 • Yorktown, Va. • Homeschooled

	AVG	AB	RUNS	HITS	RBI	BB	SB
2022	.304	171	32	52	40	16	0
Career	.357	420	101	150	121	49	5

Season Highs: H (3, 2x), R (2, 6x), RBI (6), HR (2), HBP (1)

	ERA	W-L	APP	CG	SHO	IP	SO
2022	2.05	15-8	30	14	6/3	146.2	166
Career	1.65	52-21	89	48	17/5	452	520

Season Highs: IP (9.0), H (9, 2x), SO (13), BB (6)

- Tallied three hits and six RBIs at FGCU - including her first homer of the season
- Struck out 10 batters and hit a solo home run in Clemson's 2-0 upset over Washington
- Hit two home runs vs. Winthrop with four RBIs
- Has recorded 52 hits, 12 home runs and holds a .579 slugging percentage
- Has pitched 146.2 innings with 166 strikeouts
- Preseason All-ACC selection and D1 Softball Preseason First Team All-American
- Picked up 50 career wins and 500 career strikeouts in Notre Dame series
- Reached on FC that scored winning run in opening game vs. Notre Dame
- Joined Team USA's U-18 Junior Women's National Team

77



HANNAH GOODWIN

**Fr. • INF • 5-8 • West Columbia, S.C. • White Knoll HS

	AVG	AB	RUNS	HITS	RBI	BB	SB
2022	.000	5	0	0	0	0	0
Career	.341	87	15	30	16	5	1

Season Highs: AB (2)

- Made first appearance in 2022 as a pinch hitter vs. Charlotte
- Had one plate appearance against Gardner-Webb and Mercer
- Made first start in 2022 against UNC
- Missed 2021 season due to injury
- ACC Academic Honor Roll selection
- Started 26 games at shortstop in 2020
- Led the 2020 team with a .385 average during the shortened COVID season

87



MILLIE THOMPSON (MILL-EE)

So. • LHP/INF • 5-9 • Bedford, Va.. • Liberty HS

	ERA	W-L	APP	CG	SHO	IP	SO
2022	1.69	13-3	24	7	3/5	103.1	99
Career	1.85	22-4	43	10	3/7	182	169

Season Highs: IP (7.0, 4x), H (8, 2x), SO (11), NP (103)

- Threw her first solo no-hitter vs. Furman in five innings
- Struck out eight batters without giving up a walk in 10-2 run-rule victory at Duke
- Threw Clemson's first combined no-hitter with Regan Spencer vs. Kent State
- Struck out a career-high 11 batters vs. Illinois
- ACC Pitcher of the Week on May 2
- Underwent successful surgery in December to correct a left forearm compartment syndrome injury

QUICK FACTS

Nickname	Tigers
Location	Clemson, S.C. 29633
Colors	Clemson Orange & Regalia
Founded	1889
Enrollment	27,341
President	Dr. James P. Clements (Maryland-Baltimore County '85)
Director of Athletics	Graham Neff (Georgia Tech '06)
Conference	Atlantic Coast Conference
Facility (Capacity)	McWhorter Stadium (1,616)
Year Opened	2020
Dimensions	LF - 200, CF - 220, RF - 205
Record Crowd	1,616
Head Coach	John Rittman (New Mexico State '86)
Record at Clemson	102-31 (3rd season)
Overall Record	852-382-3 (21st season)
Associate Head Coach	Kyle Jamieson (Brock '97 & Nipissing '98)
Assistant Coach	Courtney Breault (Nebraska '13, Clemson '21)
Volunteer Assistant Coach	Reese Jacobs (Georgia Southern '79)
Director of Operations	Jeannie Murphy (Oklahoma '10, Concordia '14)
Graduate Assistant	Alyssa Bilodeau (Jacksonville '21)
Athletic Trainer	Katie Rovtar (Toledo '06 & Virginia Tech '08)
Strength Coach	Ryan Metzger (Wisconsin-Oshkosh '11 & Kentucky '15)
Sport Administrator	Natalie G. Honnen (Florida '03 & '05)
First Year of Softball	2020
Season of Softball	Third

ACC STANDINGS

SCHOOL	CONF	CPCT.	OVERALL	PCT.	STREAK
Virginia Tech	21-2	.913	41-7	.854	L1
Duke	19-3	.864	41-8	.837	L1
Florida State	19-5	.792	52-5	.912	W14
Notre Dame	16-5	.762	39-10	.796	L1
Clemson	14-10	.583	39-15	.722	L1
Virginia	13-11	.542	27-24	.529	L2
Georgia Tech	11-13	.458	37-16	.698	L1
Louisville	10-14	.417	27-25	.519	L4
Syracuse	7-15	.318	26-21	.553	L1
NC State	7-17	.292	33-23	.589	L4
North Carolina	6-18	.250	23-28	.451	L6
Boston College	6-18	.250	20-27	.426	L4
Pitt	2-20	.091	14-27	.341	L7

2022 TV ROSTER



1
RACHEL GIBSON
Fr. - RHP



2
BROOKE McCUBBIN
Fr. - RHP/INF



3
SAM RUSS
+Gr. - OF



4
ABY VIEIRA
Fr. - C/UTL



5
ANSLEY HOUSTON
So. - INF



6
CARLEE SHANNON
**So. - OF



7
MCKENZIE CLARK
So. - OF



8
GRACE HILLER
Fr. - INF/OF



9
SARAH HOWELL
So. - C/UTL



10
EMMA WHITFIELD
*So. - RHP



11
HAYLEE WHITESIDES
Fr. - RHP/INF



12
CAMMY PEREIRA
**Gr. - INF/OF



13
ABI STUART
*So. - C/UTL



15
MADISON MAY
*So. - OF/INF



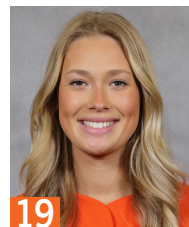
16
ALIA LOGOLEO
*So. - OF/INF



17
REGAN SPENCER
So. - RHP



18
BAILEY TAYLOR
*Gr. - INF



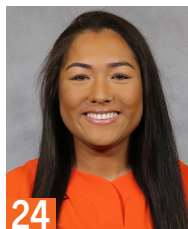
19
JADEN CHEEK
So. - INF/OF



21
JADEYN RUSZKOWSKI
Fr. - INF



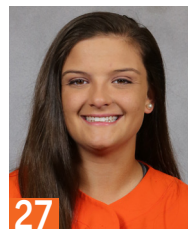
23
JoJo HYATT
**So. - C



24
ARIELLE ODA
**So. - OF/INF



25
MARISSA GUIMBARDA
*Gr. - UTL



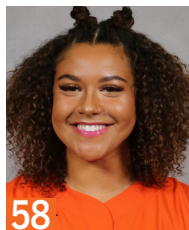
27
GRACE MATTIMORE
*Gr. - C/UTL



28
MADDIE MOORE
Fr. - INF



42
MORGAN JOHNSON
*So. - OF



58
KYAH KELLER
*So. - INF



72
VALERIE CAGLE
*So. - RHP/UTL



77
HANNAH GOODWIN
**Fr. - INF



87
MILLIE THOMPSON
So. - LHP



HC
JOHN RITTMAN
3rd Season



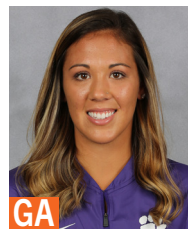
AC
KYLE JAMIESON
3rd Season



AC
COURTNEY BREAUT
3rd Season



VC
REESE JACOBS
3rd Season



GA
ALYSSA BILODEAU
1st Season



DO
JEANNIE MURPHY
3rd Season

PLAYER HIGHS

#1 RACHEL GIBSON

Career (Last)	Category	2022
Same	IP	
Same	Runs Allowed	4 (Akron 2/26)
	Earned Runs	3 (Akron 2/26)
	Walks Issued	
	Strikeouts	
Same	Hits Allowed	1 (Akron 2/26)
	Doubles Allowed	
	Triples Allowed	
	Homers Allowed	

#2 BROOKE McCUBBIN

Career (Last)	Category	2022
Same	IP	5.1 (vs Northwestern 2/19)
Same	Runs Allowed	7 (vs Northwestern 2/19)
Same	Earned Runs	5 (at Duke 3/20)
Same	Walks Issued	2, 5x (at Florida State 4/23)
Same	Strikeouts	5 (Winthrop 3/15)
Same	Hits Allowed	9 (vs Northwestern 2/19)
Same	Doubles Allowed	1, 5x (at Florida State 4/23)
	Triples Allowed	
Same	Homers Allowed	3 (at Pitt 4/10)

#3 SAM RUSS

Career (Last)	Category	2022
Same	Runs	3 (at North Carolina 4/1)
Same	Hits	3 (vs LIU 2/12)
Same	RBI	2, 3x (at Pitt 4/10)
Same	Doubles	1, 7x (ETSU 4/27)
Same	Triples	1, 5x (vs. Virginia Tech 5/13)
Same	Home Runs	1, 3x (vs. Florida State 5/14)
Same	Walks	2, 4x (at North Carolina 4/3)
Same	HBP	2 (at North Carolina 4/2)
Same	Stolen Bases	2, 5x (Georgia Tech 4/29)

#4 ABY VIEIRA

Career (Last)	Category	2022
Same	Runs	2, 2x (vs. Notre Dame 4/12)
Same	Hits	3 (at Florida State 4/21)
Same	RBI	4 (Akron 2/26)
Same	Doubles	2 (at Florida State 4/21)
	Triples	
	Home Runs	1, 4x (at Florida State 4/21)
Same	Walks	1, 6x (vs. Florida State 5/14)
	HBP	
	Stolen Bases	

#5 ANSLEY HOUSTON

Career (Last)	Category	2022
Same	Runs	1, 10x (vs. Notre Dame 5/12)
-	Hits	
-	RBI	
-	Doubles	
-	Triples	
-	Home Runs	
-	Walks	
-	HBP	
Same	Stolen Bases	1, 3x (vs. Florida State 5/14)

#6 CARLEE SHANNON

Career (Last)	Category	2022
1, 37x (vs. Florida State 5/14/22)	Runs	1, 14x (vs. Florida State 5/14)
-	Hits	
-	RBI	
-	Doubles	
-	Triples	
-	Home Runs	
-	Walks	
-	HBP	
2 (Winthrop 4/13/21)	Stolen Bases	1, 17x (vs. Virginia Tech 5/13)

#7 McKENZIE CLARK

Career (Last)	Category	2022
4 (at FGCU 2/10)	Runs	4 (at FGCU 2/10)
4, 2x (vs. Florida State 5/14/22)	Hits	4, 2x (vs. Florida State 5/14)
4 (at Florida State 4/22/22)	RBI	4 (at Florida State 4/22)
2, 3x (Mercer 3/9/22)	Doubles	2 (Mercer 3/9)
1, 8x (Virginia Tech 3/5/22)	Triples	1, 2x (Virginia Tech 3/5)
3 (at Florida State 4/22/22)	Home Runs	3 (at Florida State 4/22)
2, 6x (vs. Virginia Tech 5/13/22)	Walks	2, 4x (vs. Virginia Tech 5/13)
1, 12x (Notre Dame 4/14/22)	HBP	1, 7x (Notre Dame 4/14)
3 (Elon 2/27/21)	Stolen Bases	1, 6x (Furman 4/6)

#8 GRACE HILLER

Career (Last)	Category	2022
	Runs	
	Hits	
	RBI	
	Doubles	
	Triples	
	Home Runs	
	Walks	
	HBP	
	Stolen Bases	

#9 SARAH HOWELL

Career (Last)	Category	2022
1, 5x (North Carolina 4/3/21)	Runs	
1 (at North Florida 2/12/21)	Hits	
-	RBI	
-	Doubles	
-	Triples	
-	Home Runs	
-	Walks	
-	HBP	
2 (at Virginia 3/7/21)	Stolen Bases	

#10 EMMA WHITFIELD

Career (Last)	Category	2022
5.0 (Charlotte 3/4/20)	IP	1.0 (Akron 2/26)
3 (vs St. John's 2/9/20)	Runs Allowed	1 (Akron 2/26)
3 (vs St. John's 2/9/20)	Earned Runs	1 (Akron 2/26)
3 (Pittsburgh 3/7/20)	Walks Issued	
3, 4x (Furman 3/13/21)	Strikeouts	1 (Akron 2/26)
5 (Charlotte 3/4/20)	Hits Allowed	2 (Akron 2/26)
2 (Maryland 2/15/20)	Doubles Allowed	
1 (Akron 2/26/22)	Triples Allowed	1 (Akron 2/26)
1, 5x (Winthrop 4/13/21)	Homers Allowed	

#11 HAYLEE WHITESIDES

Career (Last)	Category	2022
	IP	
	Runs Allowed	
	Earned Runs	
	Walks Issued	
	Strikeouts	
	Hits Allowed	
	Doubles Allowed	
	Triples Allowed	
	Homers Allowed	

#12 CAMMY PEREIRA

Career (Last)	Category	2022
3 (Maryland 2/15/20)	Runs	2, 4x (at Pitt 4/10)
3, 11x (Duke 3/19/22)	Hits	3, 4x (at Duke 3/19)
3, 3x (at Pitt 4/10/22)	RBI	3, 2x (at Pitt 4/10)
1, 14x (Georgia Tech 4/30/22)	Doubles	1, 7x (Georgia Tech 4/30)
1, 4x (ETSU 4/27/22)	Triples	1, 2x (ETSU 4/27)
2 (vs Georgia Tech 5/13/21)	Home Runs	1, 5x (vs. Notre Dame 5/12)
2 (Boston College 4/17/21)	Walks	1, 13x (vs. Virginia Tech 5/13)
2, 2x (at North Carolina 4/2/22)	HBP	2 (at North Carolina 4/2)
1, 10x (Furman 4/6/22)	Stolen Bases	1 (Furman 4/6)

#13 ABI STUART

Career (Last)	Category	2022
3 (vs St. John's 2/9/20)	Runs	1 (vs Kent State 2/11)
2, 6x (Boston College 4/16/21)	Hits	
3, 3x (Winthrop 4/13/21)	RBI	
2 (Furman 3/12/21)	Doubles	
-	Triples	
1, 5x (North Carolina 4/2/21)	Home Runs	
2 (Western Carolina 2/12/20)	Walks	1, 2x (Liberty 3/14)
1, 2x (Boston College 4/17/21)	HBP	
-	Stolen Bases	

#15 MADSION MAY

Career (Last)	Category	2022
Same	Runs	1, 2x (vs Texas Tech 2/17)
Same	Hits	2 (vs Wisconsin 2/19)
Same	RBI	2 (vs Texas Tech 2/17)
Same	Doubles	1, 2x (at Charlotte 2/23)
-	Triples	
-	Home Runs	
Same	Walks	2, 2x (vs Tennessee 2/18)
Same	HBP	1 (vs Tennessee 2/18)
-	Stolen Bases	

PLAYER HIGHS

#16 ALIA LOGOLEO

CAREER (LAST)	CATEGORY	2022
4 (at Syracuse 5/9/21)	Runs	2, 5x (vs. Virginia Tech 5/13)
4 (at Syracuse 5/9/21)	Hits	3, 3x (vs. Florida State 5/14)
10 (at Syracuse 5/9/21)	RBI	8 (at North Carolina 4/1)
2, 2x (at Charlotte 2/23/22)	Doubles	2 (at Charlotte 2/23)
1, 2x (Morgan State 2/23/20)	Triples	
3 (at Syracuse 5/9/21)	Home Runs	2, 2x (vs. Virginia Tech 5/13)
2, 3x (at Pitt 4/10/22)	Walks	2, 2x (at Pitt 4/10)
1, 8x (at North Carolina 4/3/22)	HBP	1, 3x (at North Carolina 4/3)
2 (vs Virginia Tech 5/14/21)	Stolen Bases	1, 2x (Louisville 3/27)

#17 REGAN SPENCER

CAREER (LAST)	CATEGORY	2022
7.0, 2x (St. Francis 2/25/22)	IP	7.0 (St. Francis 2/25)
4 (at North Carolina 4/3/22)	Runs Allowed	4 (at North Carolina 4/3)
3 (Boston College 4/17/21)	Earned Runs	2, 3x (at North Carolina 4/3)
3, 4x (ETSU 4/27/22)	Walks Issued	3, 2x (ETSU 4/27)
8 (at Louisville 3/20/21)	Strikeouts	7 (Louisville 3/27)
7, 2x (at Florida State 4/23/22)	Hits Allowed	7 (at Florida State 4/23)
2, 2x (at North Carolina 4/3/22)	Doubles Allowed	2 (at North Carolina 4/3)
-	Triples Allowed	
1, 4x (Liberty 3/13/22)	Homers Allowed	1 (Liberty 3/13)

#18 BAILEY TAYLOR

CAREER (LAST)	CATEGORY	2022
3, 2x (Virginia 3/1/20)	Runs	1, 2x (at Pitt 4/10)
2, 6x (at Pitt 4/10/22)	Hits	2, 2x (at Pitt 4/10)
4 (Maryland 2/15/20)	RBI	2 (at Pitt 4/8)
1, 3x (at Pitt 4/8/22)	Doubles	1 (at Pitt 4/8)
-	Triples	
1, 3x (at Pitt 4/10/22)	Home Runs	1 (at Pitt 4/10)
2, 2x (at North Carolina 4/2/22)	Walks	2 (at North Carolina 4/2)
Same	HBP	2 (vs Kent State 2/11)
-	Stolen Bases	

#19 JADEN CHEEK

CAREER (LAST)	CATEGORY	2022
1, 3x (Notre Dame 4/14/22)	Runs	1, 2x (Notre Dame 4/14)
1 (Furman 3/23/21)	Hits	
-	RBI	
-	Doubles	
-	Triples	
-	Home Runs	
-	Walks	
-	HBP	
1, 3x (Furman 4/6/22)	Stolen Bases	1 (Furman 4/6)

#21 JADEYN RUSZKOWSKI

CAREER (LAST)	CATEGORY	2022
	Runs	
	Hits	
	RBI	
	Doubles	
	Triples	
	Home Runs	
	Walks	
	HBP	
	Stolen Bases	

#23 JoJo HYATT

CAREER (LAST)	CATEGORY	2022
3 (Maryland 2/15/20)	Runs	1 (Mercer 3/9)
3 (at Syracuse 5/9/21)	Hits	2, 2x (at Duke 3/18)
3 (vs Texas Tech 2/17/22)	RBI	3 (vs Texas Tech 2/17)
1, 3x (at Syracuse 5/8/21)	Doubles	
1, 2x (vs Texas Tech 2/17/22)	Triples	1 (vs Texas Tech 2/17)
1 (at Virginia 3/7/21)	Home Runs	
2, 2x (Boston College 4/17/21)	Walks	1, 5x (at Duke 3/20)
1, 4x (at Duke 3/19/22)	HBP	1 (at Duke 3/19)
-	Stolen Bases	

#24 ARIELLE ODA

CAREER (LAST)	CATEGORY	2022
2, 3x (Furman 4/6/22)	Runs	2 (Furman 4/6)
2 (at Florida State 4/22/22)	Hits	2 (at Florida State 4/22)
2, 2x (Furman 4/6/22)	RBI	2 (Furman 4/6)
1, 2x (Georgia Tech 4/30/22)	Doubles	1, 2x (Georgia Tech 4/30)
1 (Charlotte 3/4/20)	Triples	
1 (Furman 4/6/22)	Home Runs	1 (Furman 4/6)
2 (ETSU 4/27/22)	Walks	2 (ETSU 4/27)
1, 3x (Boston U 2/25/22)	HBP	1 (Boston U 2/25)
1, 12x (Georgia Tech 4/30/22)	Stolen Bases	1, 7x (Georgia Tech 4/30)

#25 MARISSA GUIMBARDA

CAREER (LAST)	CATEGORY	2022
2, 9x (at North Carolina 4/3/22)	Runs	2, 4x (at North Carolina 4/3)
3, 6x (at North Carolina 4/3/22)	Hits	3, 2x (North Carolina 4/3)
5, 2x (at North Carolina 4/2/22)	RBI	5 (at North Carolina 4/2)
2, 2x (Liberty 3/13/22)	Doubles	2 (Liberty 3/13)
1 (Morgan State 2/23/20)	Triples	
2, 3x (at North Carolina 4/3/22)	Home Runs	2, 2x (at North Carolina 4/3)
3 (Virginia 2/28/20)	Walks	2, 7x (at Pitt 4/9)
3 (at Georgia Tech 2/21/21)	HBP	1, 6x (Georgia Tech 4/30)
1, 2x (at Duke 3/18/22)	Stolen Bases	1 (at Duke 3/18)

#27 GRACE MATTIMORE

CAREER (LAST)	CATEGORY	2022
2, 4x (North Carolina 4/2/21)	Runs	1 (Virginia Tech 3/6)
2, 9x (North Carolina 4/2/21)	Hits	1 (Virginia Tech 3/6)
4 (vs St. John's 2/9/20)	RBI	
2 (Charlotte 3/4/20)	Doubles	1 (Virginia Tech 3/6)
-	Triples	
1 (North Carolina 4/2/21)	Home Runs	
3, 2x (at Syracuse 5/8/21)	Walks	1, 2x (Furman 4/6)
2 (vs Illinois State 2/12/21)	HBP	
1 (vs Illinois State 2/12/21)	Stolen Bases	

#28 MADDIE MOORE

CAREER (LAST)	CATEGORY	2022
Same	Runs	2, 3x (at Pitt 4/10)
Same	Hits	2 (Georgia Tech 5/1)
Same	RBI	2 (Boston U 2/26)
Same	Doubles	1, 5x (ETSU 4/27)
Same	Triples	
Same	Home Runs	1, 2x (at North Carolina 4/2)
Same	Walks	2 (at North Carolina 4/3)
Same	HBP	1 (at North Carolina 4/1)
Same	Stolen Bases	1, 9x (vs. Florida State 5/14)

#58 KYAH KELLER

CAREER (LAST)	CATEGORY	2022
3 (North Carolina 4/2/21)	Runs	1 (Mercer 3/9)
3 (North Carolina 4/2/21)	Hits	2 (at Duke 3/19)
4 (North Carolina 4/2/21)	RBI	2, 2x (Louisville 3/26)
1, 3x (Mercer 3/9/22)	Doubles	1 (Mercer 3/9)
1 (NC State 4/23/21)	Triples	
2 (North Carolina 4/2/21)	Home Runs	
1, 11x (Furman 4/6/22)	Walks	1, 5x (Furman 4/6)
1, 4x (South Carolina 3/30/22)	HBP	1, 2x (South Carolina 3/30)
-	Stolen Bases	

#72 VALERIE CAGLE

CAREER (LAST)	CATEGORY	2022
3, 3x (vs Troy 5/21/21)	Runs	2, 6x (at Pitt 4/8)
4, 2x (Virginia 2/28/20)	Hits	3, 2x (at Charlotte 2/23)
8 (Maryland 2/15/20)	RBI	6 (at FGCU 2/10)
2, 2x (Georgia Tech 5/1/22)	Doubles	2 (Georgia Tech 5/1)
1, 2x (at Florida State 4/22/22)	Triples	1 (at Florida State 4/22)
2, 7x (Winthrop 3/15/22)	Home Runs	2 (Winthrop 3/15)
3, 2x (Akron 2/26)	Walks	3 (Akron 2/26)
1 (vs Kent State 2/11)	HBP	1 (vs Kent State 2/11)
1, 5x (Winthrop 4/13/21)	Stolen Bases	
11.0 (at Louisville 3/19/21)	IP	9.0 (vs Tennessee 2/18)
10 (vs Duke 2/7/20)	Runs Allowed	8 (vs. Florida State 5/14)
10 (vs Duke 2/7/20)	Earned Runs	7 (vs. Florida State 5/14)
6, 2x (vs. Florida State 5/14)	Walks Issued	6 (vs. Florida State 5/14)
14, 3x (vs Georgia Tech 5/13/21)	Strikeouts	13 (vs Tennessee 2/18)
10 (vs Duke 2/7/20)	Hits Allowed	9, 2x (Notre Dame 4/16)
3 (Virginia 2/28/20)	Doubles Allowed	1, 8x (at Florida State 4/21)
1, 3x (vs Tennessee 2/18/22)	Triples Allowed	1 (vs Tennessee 2/18)
2, 3x (vs. Florida State 5/14/22)	Homers Allowed	2, 3x (vs. Florida State 5/14)

#77 HANNAH GOODWIN

CAREER (LAST)	CATEGORY	2022
2, 3x (Pittsburgh 3/6/20)	Runs	
3, 2x (vs Stetson 2/22/20)	Hits	
4 (vs St. John's 2/7/20)	RBI	
1, 5x (Pittsburgh 3/6/20)	Doubles	
-	Triples	
1, 4x (Pres. College 3/10/20)	Home Runs	
2 (Michigan State 2/16/20)	Walks	
1, 4x (Georgia 2/26/20)	HBP	
1 (at UNCG 2/18/20)	Stolen Bases	

#87 MILLIE THOMPSON

CAREER (LAST)	CATEGORY	2022
7.0, 7x (vs. Notre Dame 5/12/22)	IP	7.0, 5x (vs. Notre Dame 5/12)
5 (at Florida State 4/22/22)	Runs Allowed	5 (at Florida State 4/22)
4, 2x (at Florida State 4/22/22)	Earned Runs	4, 2x (at Florida State 4/22)
3, 5x (Louisville 3/25/22)	Walks Issued	3, 2x (Louisville 3/25)
11 (Illinois 3/13/22)	Strikeouts	11 (Illinois 3/13)
8, 5x (at Florida State 4/22/22)	Hits Allowed	8, 2x (at Florida State 4/22)
4 (Notre Dame 4/15/22)	Doubles Allowed	4 (Notre Dame 4/15)
-	Triples Allowed	
2 (at Pitt 4/9/22)	Homers Allowed	2 (at Pitt 4/9)