



# GAME NOTES

# CLEMSON SOFTBALL

#TEAM3

## GAME 48: CLEMSON VS EAST TENNESSEE STATE

WEDNESDAY, APRIL 27

MCWHORTER STADIUM • CLEMSON, S.C.

### THIS WEEK

- **Wednesday, April 27**  
- No. 18/17 Clemson vs. East Tennessee State - 6 p.m.
- **Friday, April 29**  
- No. 18/17 Clemson vs. Georgia Tech - 6 p.m.
- **Saturday, April 30**  
- No. 18/17 Clemson vs. Georgia Tech - 1 p.m.
- **Sunday, May 1: SENIOR DAY**  
- No. 18/17 Clemson vs. Georgia Tech - 12 p.m.
- **Where:** McWhorter Stadium | Clemson, S.C.
- **Watch:** Wednesday's game can be watched on ACCNX.
- **Live Stats** - [ClemsonTigers.com/softball/schedule](http://ClemsonTigers.com/softball/schedule)
- **Social Media** - [ClemsonSoftball](http://ClemsonSoftball)

### CLEMSON OVERVIEW

- Clemson returns 21 players from last season to the 2022 roster and added eight newcomers.
- The Tigers are batting .273 as a team with a .469 slugging percentage and .369 on-base percentage.
- Clemson's pitching staff is posting a 1.87 ERA through 306.1 innings of work and struck out a combined 289 batters.

### ETSU OVERVIEW

- East Tennessee State is led by first year head coach Belinda Hendrix.
- The Bucs are batting .216 as a team off 246 hits with 103 runs scored and 98 stolen bases. In the circle, the Bucs have a 6.15 ERA through 290.1 innings with 174 strikeouts.
- Cameron Young leads the Bucs with a .295 average off 38 hits and 13 stolen bases. Allison Farr has a 5.55 ERA through 103.1 innings with 77 strikeouts.

### QUICK HITS

- Clemson has outscored opponents this season 230-114.
- The Tigers have run-ruled 11 opponents this season: FGCU, Kent State, LIU, Texas Tech, Boston U, Winthrop, Furman and four ACC opponents (Duke, Louisville, North Carolina and Pitt twice).
- Clemson has 325 hits through 47 games, including posting 50 doubles and 55 home runs.
- The Tigers have 211 RBIs this season led by Alia Logoleo (38), Valerie Cagle (35), Marissa Guimbarada (33) and McKenzie Clark (26).
- When Clemson scores in the first inning, the Tigers are 15-3. The Tigers have outscored opponents 36-12 in the first inning.
- The Tigers are 27-6 when scoring first this season, no matter what inning.

### THE NATIONALLY RANKED TIGERS

- The latest USA Today/NFCA poll and ESPN/USA Softball poll has Clemson at No. 17.
- D1Softball.com has Clemson at No. 17 and Softball America rounds out the polls at No. 14.
- Clemson received its first single-digit ranking in program history clocking in at No. 9 on the ESPN/USA Softball poll during the third week. They held the ranking for two weeks.
- Last season, Clemson climbed as high as No. 10 by ESPN/USA Softball and finished No. 17 last season.

- The RPI leading into week 11 had Clemson at No. 9 and No. 13 on the 2022 strength of schedule.

### WALK IT OFF

- The Clemson Tigers have proven all season that they may be down, but they are never out of a game.
- The Tigers have had 11 walk off wins, five have been run-rule victories while three have been in extra innings.
- The Tigers had two walk offs against No. 23/25 Notre Dame to take the series.
- On top of the walk offs, Clemson has five comeback wins, including four that were walk off wins.

### WALK OFF VICTORIES (2022)

Opponent	Date	Batter	Run-Scorer
Kent State	2/11	Pereira	Stuart, Guimbarada
LIU	2/12	Cagle	Russ, Cagle
Texas Tech	2/17	Hyatt	May, Pereira, Oda
Tennessee	2/18	Clark	Moore
Boston U.	2/25	Logoleo	Pereira, Logoleo
Liberty	3/13	Keller	Pereira, Houston
Liberty	3/14	Logoleo	Houston
Louisville	3/26	Vieira	Shannon
Furman	4/6	Guimbarada	Cagle, Guimbarada
Notre Dame	4/14	Cagle	Cheek
Notre Dame	4/16	Pereira	Houston

### STANDOUT MOMENTS

- Sophomores Regan Spencer and Millie Thompson threw Clemson's first combined no-hitter against Kent State, a five-inning run-rule victory.
- Sophomore McKenzie Clark hit the program's first inside the park home run against Akron on Feb. 26 dropping a ball into right center. She crossed home two steps ahead of the throw reaching the plate.
- Freshman Aby Vieira recorded her first collegiate home run with a grand slam out of right center against Akron. The grand slam was Clemson's first of the season.
- The Tigers defeated No. 13/8 Duke in run-rule fashion for another program first picking up a five-inning 10-2 win behind an eight strikeout performance from Thompson in the circle.
- Clemson finished with 10 home runs against the Tar Heels led by Marissa Guimbarada hitting four, Logoleo hitting three - including a grand slam, Vieira hitting two and Maddie Moore tallying one.
- Guimbarada was named ACC Co-Player of the Week after the UNC series where she recorded four homers and eight RBIs. Guimbarada was also selected as one of the top NFCA performances of the week alongside teammate Alia Logoleo who tallied four home runs and 12 RBIs through four games.
- Thompson threw her first solo-career no-hitter with a five inning performance against Furman. Thompson threw only 52 pitches, 38 strikes, and picked up two strikeouts on the way to earning the Tigers' fifth program no-no.
- McKenzie Clark became the second Tiger in program history to record three home runs in a game doing so against ACC foe Florida State.

### SENIOR WEEKEND

- Clemson softball will honor seven seniors on May 1 after the series finale against Georgia Tech.
- The seven seniors include: Marissa Guimbarada, Grace Mattimore, Cammy Pereira, Sam Russ, Carlee Shannon,

### CLEMSON AT A GLANCE

Overall Record:	33-14
ACC Record:	11-10
Home Record:	18-5
Away Record:	10-6
Neutral Record:	5-3
Streak:	L3
Last 5 Games:	1-4
Last 10 Games:	6-4
Day Record:	20-6
Night Record:	13-8

### HEAD COACH JOHN RITTMAN

Third Season at Clemson:	96-30 (.762)
ACC Record (Regular Season):	45-16 (.738)
21st Year Overall:	846-381-3 (.688)

### CLEMSON HISTORY

All-Time:	96-30
All-Time Record, Home:	55-11
All-Time Record, Away:	27-11
All-Time Record, Neutral:	14-8

### VS EAST TENNESSEE STATE

All-Time:	0-0
Last Clemson Win:	N/A
Last ETSU Win:	N/A
Streak:	N/A

\*Note: A full 2022 schedule is available on the second page  
 \*Note to media members: Credential requests for home games at McWhorter Stadium open on the preceeding Monday of each game. Requests can be made at [ClemsonTigers.com/softball](http://ClemsonTigers.com/softball) under Media Resources.

### WEEKLY POLLS

Date	W-L	2022			
		NFCA	ESPN	D1	SA
2-7	0-0	15	14	14	14
2-15	3-1	15	12	13	14
2-22	6-3	15	9	13	12
3-1	11-3	14	9	13	11
3-8	12-6	17	15	17	17
3-15	17-6	17	15	18	19
3-22	18-8	16	15	19	21
3-29	21-10	18	16	19	21
4/5	25-10	18	T17	19	19
4/12	30-10	16	16	17	14
4/19	33-11	17	17	17	14
4/26	33-14	18	17	18	18
2021					
3-29	22-4	18	19	23	20
4-5	26-4	18	18	20	19
4-12	26-4	17	18	19	19
4-17	32-4	16	16	18	16
4-26	37-4	13	13	15	13
5-3	37-4	13	11	15	13
5-10	40-5	13	10	16	13
5-17	42-6	13	10	17	14
6-10	44-8	18	17	19	22

Note: Clemson's all-time rankings can be found in the Clemson softball record book.

Stats and notes are updated going into series only

# NOTES

## 2022 SCHEDULE

Date	Day	Opponent (Rank)	Watch	Time/Result
2-10	Thu	\$ at FGCU	Youtube	W, 11-0 (5)
2-11	Fri	\$ Kent State	N/A	W, 8-0 (5)
2-11	Fri	\$ Texas	N/A	L, 0-4
2-12	Sat	\$ LIU	N/A	W, 8-0 (6)
2-13	Sun	\$ Boston College	N/A	Canceled
2-17	Thu	% Texas Tech	ACCN	W, 8-0 (5)
2-18	Fri	% Tennessee	ESPN+	W, 4-3 (9)
2-19	Sat	% Northwestern	ACCN	L, 0-7
2-19	Sat	% Wisconsin	ESPN+	L, 1-2 (8)
2-20	Sun	% Washington	ESPNU	W, 2-0
2-23	Wed	at Charlotte	ESPN+	W, 5-2
2-25	Fri	# Boston University	ACCNX	W, 8-0 (5)
2-25	Fri	# St. Francis	ACCNX	W, 2-0
2-26	Sat	# Akron	ACCNX	W, 10-5
2-26	Sat	# Boston University	ACCNX	W, 7-3
3-1	Tue	Gardner-Webb	ACCNX	W, 6-0
3-4	Fri	* Virginia Tech	ACCN	L, 1-6
3-5	Sat	* Virginia Tech	ACCNX	L, 0-4
3-6	Sun	* Virginia Tech	ACCNX	L, 2-4
3-9	Wed	Mercer	ACCNX	W, 3-0
3-12	Sat	! Illinois	ACCNX	W, 3-1
3-13	Sun	! Illinois	ACCNX	W, 4-0
3-13	Sun	! Liberty	ACCNX	W, 5-4 (8)
3-14	Mon	! Liberty	ACCNX	W, 1-0 (8)
3-15	Tue	Winthrop	ACCNX	W, 8-0 (5)
3-18	Fri	* at Duke	ACCNX	L, 2-6
3-19	Sat	* at Duke	ACCNX	W, 10-2 (5)
3-20	Sun	* at Duke	ACCN	L, 1-7
3-23	Wed	at Georgia	SECN	L, 2-3
3-25	Fri	* Louisville	ACCNX	W, 5-2
3-26	Sat	* Louisville	ACCN	W, 8-0 (5)
3-27	Sun	* Louisville	ACCN	L, 2-4 (8)
3-30	Wed	South Carolina	ACCN	W, 8-1
4-1	Fri	* at North Carolina	ACCNX	W, 12-4
4-2	Sat	* at North Carolina	N/A	W, 7-0
4-3	Sun	* at North Carolina	ACCNX	W, 12-4 (5)
4-6	Wed	Furman	ACCNX	W, 3-2
4-6	Wed	Furman	ACCNX	W, 8-0 (5)
4-8	Fri	* at Pittsburgh	ACCN	W, 8-0 (5)
4-9	Sat	* at Pittsburgh	ACCNX	W, 6-5
4-10	Sun	* at Pittsburgh	ACCNX	W, 11-3 (5)
4-12	Tue	at South Carolina	ESPNU	W, 3-1
4-14	Thu	* Notre Dame	ACCNX	W, 3-2
4-15	Fri	* Notre Dame	ACCNX	L, 0-4
4-16	Sat	* Notre Dame	ACCNX	W, 2-1
4-21	Thu	* at Florida State	ESPN2	L, 4-5
4-22	Fri	* at Florida State	ACCN	L, 6-7
4-23	Sat	* at Florida State	ACCN	L, 0-6
4-27	Wed	ETSU	ACCNX	6 p.m.
4-29	Fri	* Georgia Tech	ACCNX	6 p.m.
4-30	Sat	* Georgia Tech	RSN	1 p.m.
5-1	Sun	* Georgia Tech	RSN	12 p.m.
5-11 - 5-14	^	ACC Championship	ACCN	TBA
5-19 - 5-22	&	NCAA Regionals	TBA	TBA
5-26 - 5-29	&	NCAA Super Regionals	TBA	TBA
6-2 - 6-9	&	NCAA Women's College World Series	TBA	TBA

Note: Home games in **bold**; all times are Eastern  
 \* - ACC regular-season game  
 \$ - FGCU Kickoff Classic (Fort Myers, Fla.)  
 % - St. Pete/Clearwater Elite Invitational (Clearwater, Fla.)  
 # - Clemson Classic (Clemson, S.C.)  
 ! - Tiger Invitational (Clemson, S.C.)  
 ^ - ACC Championship (Louisville, Ky.)  
 & - NCAA Tournament (Oklahoma City, Okla.)

Bailey Taylor and Emma Whitfield.  
 • This is Clemson's largest senior class in program history after only honoring one in the inaugural season and two in 2021.

### MCKENZIE "PIE" CLARK

- Sophomore McKenzie Clark got off to a slow start in 2022 but hit her stride nicely in the middle of the season ready to prove why she was an ACC Preseason Selection.
- Clark, best known by her nickname "Pie," has been flexible and productive in the lineup floating between the leadoff and second spot.
- Clark is batting .338 in conference play clocking 22 hits - including eight home runs - 17 runs scored and 16 RBIs.
- On the season, Clark is batting .313 off 45 hits with 26 RBIs and 35 runs scored. She has also stolen six bases and hit 10 home runs - including an inside the park homer vs. Akron.
- She held a 20-game reached-base streak heading into the Florida State series but didn't reach on the opening game.
- Also against FSU, Clark hit three home runs in a single game bringing in four RBIs to be only the second Tiger to accomplish the feat in program history.
- Defensively, Clark is one of three consistent starters that has posted a perfect 1.000 fielding percentage covering the center field grass with ease and grace putting her on pace to be in the top running for an inaugural Golden Glove Award. She has 41 putouts and four assists on the year.

### FIRST 100

- Clemson softball played its 100th game in program history on March 13 against Illinois at the Tiger Invitational. The Tigers won 4-0 behind Millie Thompson's first collegiate career shutout with a career-high 11 strikeouts.
- The 100th game was played almost five years to the date of the program being announced - program addition was announced on March 14, 2017.
- Through the first 100 games, the softball team paced itself to tie the best start by any program at Clemson. Softball ties women's tennis with 78 wins. Other sports at Clemson can be found below.
- Clemson is now closing in on 100 wins in less than three years.
- The softball team is once again on pace to hit 100 victories in the fewest games. The only team to reach 100 wins faster is women's tennis who accomplished it in only 128 games. Softball has 96 wins through 126 games entering the ETSU game.

### FIRST 100 GAMES - BY PROGRAM

Sport (1st Year)	Wins	Loss	Ties	Percentage
Softball (2020)	78	22	-	.780
Women's Tennis (1976)	78	22	-	.780
WBasketball (1975-76)	73	37	-	.730
Women's Soccer (1994)	69	29	2	.700
Volleyball (1977)	68	32	-	.680
Men's Soccer (1934)	63	27	10	.680
Baseball (1896)	60	36	4	.620
Football (1896)	58	34	8	.620
MBasketball (1911-12)	55	44	1	.555
Men's Tennis (1921)	47	48	5	.495

### CAREER MILESTONES

- Clemson softball reaches new milestones both as a team and individually every day.
- Against Notre Dame, three Tigers hit career benchmarks.
- Valerie Cagle opened the series on Thursday earning her 50th career win in the circle. She followed that on

Saturday with her 500th career strikeout in only 84 appearances.

- Millie Thompson also hit a big milestone striking out 150th batter on Friday's game.
- Sam Russ rounded out the Tigers when she stole her 22nd base on the year and 125th of her career vs. the Fighting Irish. Russ is one stolen bases away from tying Clemson's single-season record (23) with McKenzie Clark in 2021 and two from holding it outright.
- Multiple other benchmarks are close to being reached including but not limited to: Cagle 100 runs, Pereira 100 runs, Guimbarda 60 home runs. More can be found in the table on page five of these notes.

### FRESHMAN FORTE

- Freshman Aby Vieira has made herself a crucial part of the Tiger lineup.
- Vieira leads the team with a .342 average clocking 26 hits with three doubles and four home runs.
- She has 12 RBIs and 10 runs scored with a .539 slugging percentage.
- She has been a vital part of the defense as well catching both no-hitters this season, Valerie Cagle's 50th career win and the upset over Washington.

### GUIMBARDA GREATNESS

- Graduate Marissa Guimbarda has been a key contributor to Clemson's offense over the past three seasons.
- Prior to her time in the Orange and Regalia, Guimbarda played two seasons at Furman.
- Most recently, she hit a walk off two-run homer against her former team, Furman, to give Clemson the 3-2 win. The homer brings her career total to 58.
- Guimbarda hit four home runs against North Carolina. She is currently ranked sixth among action players in the NCAA for most home runs in her career.
- She hit 24 while at Furman and has 34 at Clemson.
- Guimbarda becomes the 196th player in NCAA Division I history to hit 50 homers during her collegiate career.

### CONSISTENT CAMMY

- Cammy Pereira has been a consistent presence since signing to join Clemson's inaugural class being the Tigers' go-to face of the program in different situations.
- Pereira was recently recognized at the Clemson Board Meeting as a notable student-athlete having been the driving force to multiple Clemson initiatives including but not limited to: being the leader of the Tigers Unite affinity group CU Pride, spoken at several panels regarding issues in the LGBTQ community, participating in Clemson academic research, is a Paw Pal mentor and a student liaison for the We CU Committee for staff engagement.
- Following her time at Clemson, Pereira will attend medical school at Via College of Osteopathic Medicine beginning in July.
- Pereira became the third softball player at Clemson to be awarded the Weaver-James-Corrigan postgraduate scholarship by the ACC.
- On the field this season, Pereira has started every game at second base and maintains a .284 average with 26 runs scored and 21 RBIs.

### CAGLE CALLS GAME

- Valerie Cagle was named a 2022 USA Softball Player of the Year Top 25 Finalist in April. This is the second-consecutive season she has accomplished this feat.
- Prior to 2022, Cagle was named a Preseason First Team All-American by D1Softball and Softball America.
- After opening the St. Pete/Clearwater Tournament with a run-rule victory over TTU, she pitched nine innings to defeat No. 18/15 Tennessee. She struck out 13 batters en route to earning the victory.

# NOTES

- Cagle threw a complete-game shutout against the No. 6/5 Huskies with 10 strikeouts and hit a solo homer in the sixth inning to upset Washington.
- Against Louisville, the Yorktown, Va. native picked up 12 strikeouts in eight innings of work and limited opponents to a .138 batting average - she also shutout the Cardinals in five innings of work for the run-rule victory on Saturday.
- In the first midweek against South Carolina, Cagle notched 11 strikeouts in the circle and kicked off the game with a three-run homer in the bottom of the first.
- Last season, Cagle became the first softball player in ACC history to be named both the Player and Freshman of the Year.
- She was named a NFCA Second Team All-American, a NFCA National Freshman of the Year Top-3 finalist and a USA Softball Collegiate Player of the Year Top 10 Finalist last season.

## DANGE(RUSS)

- Graduate transfer Sam Russ comes to Clemson to use her final year of eligibility.
- Russ decided to use her extra year at Clemson after her father, Frank Russ, played baseball for the Tigers from 1980-83 and her mom graduated from Clemson.
- Russ spent her first four years at NC State where she was a three-time ACC selection and holds the Wolf-pack's record for both career (103) and single season (32) stolen bases.
- She currently ranks first in the NCAA among active D1 players for most career stolen bases (125).

## TOP 25 VICTORIES

- The Tigers defeated two top 25 programs at the St. Pete/Clearwater Elite Invitational in No. 18/15 Tennessee an No. 6/45 Washington.
- Clemson took Tennessee to nine innings to earn the 4-3 win with six players recording a hit, including Marissa Guimbar da hitting a solo blast out of left field.
- Clemson picked up its first top-10 victory in program history defeating the No. 6/5 Washington Huskies in seven innings on the final day of the 2022 St. Pete/Clearwater Elite Invitational.
- Valerie Cagle earned both wins in the circle. She threw all 9.0 innings with 13 strikeouts against Tennessee and a complete 7.0 inning game against the Huskies, picking up 10 strikeouts and limiting them to only four hits.
- The Washington win was Clemson's first seven-inning win this season and handed the Huskies their first loss.
- The Tigers captured a run-rule victory over a ranked opponent for the first time in program history defeating No. 13/8 Duke in five innings, 10-2.
- Millie Thompson pitched all five innings, striking out eight batters without giving up a walk to earn the victory for the Tigers.
- Clemson knotted two walk off wins over the No. 23/25 Notre Dame Fighting Irish. They opened the series with a 3-2 victory and clinched the rubber match with a 2-1 win.

## YOUNG PROGRAM

- The Clemson softball team has accomplished multiple feats for being a program with just over 100 games.
- Entering this season, the only players with over 100 collegiate games under their belts are transfers that began their careers at other programs. These players include Marissa Guimbar da, Grace Mattimore, Cammy Pereira, Sam Russ and Bailey Taylor.
- Valerie Cagle surpassed the 100-game mark after starting every game in program history for the Tigers. JoJo Hyatt hit the 100-game mark at Georgia, while Logoleo and Oda surpassed it during the UNC series.

- The remaining 20 players on the 2022 roster have appeared in less than 100 games led by McKenzie Clark (99) and Carlee Shannon (98).
- The Tigers won the ACC Regular Season Title in their first complete season in 2021 after the 2020 inaugural season was cut short due to COVID-19.
- In the second season, the Tigers also competed in the ACC Championship game and at the Tuscaloosa Regional.

## ACC PRESEASON HONORS

- The Tigers have been picked to finish second in the ACC
- Clemson pitcher Valerie Cagle and outfielder McKenzie Clark were named to the 2022 Preseason All-ACC Team based on vote by the league's head coaches.
- Cagle returns after being named the ACC Player and Freshman of the Year in 2021. She batted .404 with a .821 slugging percentage and 17 home runs. She also led the Tigers with a 1.16 ERA and 267 strikeouts.
- Clark had a breakout freshman season posting a .355 average and .639 slugging percentage. She stole a team-high 23 bases in 2021 and was an NFCA All-Region Selection.

## CLEMSON+

- Clemson Athletics and IPTAY have launched Clemson+, a streaming service dedicated to showing what it's like to be a Tiger.
- Clemson+ showcases the best video content, and is now available on all major streaming platforms, via the Clemson Tigers app and web browser.
- The subscription will be included as an exclusive benefit to more than 26,000 IPTAY and Collegiate Club members.
- Clemson softball will be apart of the initial launch of Clemson+ with a Clemson Softball All-Access feature.
- Get an inside look at the day-to-day aspects of the Clemson softball program and exclusive interviews with the coaching staff and student-athletes. Additional episodes are added every two weeks.

## LEGACY - BLACK HISTORY MONTH

- February allowed us to shine a spotlight on the many contributions, successes and challenges of African Americans at Clemson.
- The next iteration will feature student-athletes and staff members talking about an inspirational Black person in their lives.
- Clemson softball's own Morgan Johnson's has penned a letter to Jackie Robinson about his influence and the impact he has had on her career in the sports community.
- Johnson sat down with ESPN to discuss the impact Jackie Robinson had on her life as we near the 75th anniversary since he broke the color barrier in baseball on April 15. The interview can be found on ESPN's YouTube channel and on the sister-site, Andscape.
- Her feature is now live on ClemsonTigers.com. View it on the main page under "My Story."

## SEASON TICKETS SOLD OUT

- The Clemson community continues to show its unwavering support to the Clemson softball team through ticket sales.
- Season tickets were sold out prior to the New Year, and IPTAY members and the general public have done their part by snapping up all single-game tickets.
- Tickets for every game during the regular-season at McWhorter sold out prior to opening day.

## UPCOMING

- Clemson concludes the 2022 regular season this

## TIGER TIDBITS

Category	Record
Record	33-14
ACC Record	11-10
Non-Conference Record	22-4
Versus Top 25 (NFCA)	5-14
Versus Top 10 (NFCA)	1-7
Versus Top 5 (NFCA)	0-3
In February	11-3
In March	11-7
In April	11-4
In May	--
On Monday	1-0
On Tuesday	3-0
On Wednesday	5-1
On Thursday	3-1
On Friday	7-5
On Saturday	9-4
On Sunday	5-3
In Day Games	20-6
In Night Games	13-8
In 1-Run Games	7-4
In 2-Run Games	4-2
In 5+ Run Games	17-4
After a Loss	7-6
After a Win	25-7
In Extra Innings	3-2
Shutouts	16-5
Scoring First	27-6
Scoring in the 1st Innings	15-3
Leading After 4	24-5
Trailing After 4	4-7
Tied After 4	5-2
Leading After 5	13-3
Trailing After 5	4-9
Tied After 5	5-2
Leading After 6	15-1
Trailing After 6	4-11
Tied After 6	2-2
Scoring 5 or More Runs	22-1
Allowing 5 or More	2-7
Out-hit opponent	26-3
Opponent out-hit	5-10
Hits are equal	2-1
Make 0 errors	13-3
Make 1 error	16-6
Make 2+ error	4-5
Opp. makes 0 errors	10-5
Opp. makes 1 error	9-5
Opp. makes 2+ errors	14-4

## MEDIA SERVICES

### CLEMSON ATHLETIC COMMUNICATIONS

Contact	Valerie Johnson (Central Michigan '18)
Email	vjohns4@clemson.edu
Cell Phone	712-269-4149
Ticket Office Phone	1-800-CLEMSON
Website	ClemsonTigers.com
Social Media	ClemsonSoftball

### ACC MEDIA RELATIONS

Justin Wilson is the softball athletic communications contact at the ACC office. He can be reached at 336.369.3713 or at jwilson@acc.org.

### CREDENTIALS

Members of the working press who desire a media credential to a Clemson softball home game ClemsonTigers.com/softball under Media Resources. There is limited space for writers inside McWhorter Stadium. Members of the media must request a pass at least 24 hours prior to each game to be considered for admittance.

### WEBSITE & SOCIAL MEDIA

Up-to-date stats, notes, stories and box scores can be found on Clemson's official website (ClemsonTigers.com). Live online video, live audio and live stats can be accessed on the ClemsonTigers.com softball schedule page. Fans can also follow ClemsonSoftball on Twitter, Instagram and Facebook.

# NOTES

weekend hosting Georgia Tech in a three-game series on Senior Weekend.

## ADDITIONAL MEDIA RESOURCES

• More information and a digital version of this set of game notes can be found by scanning the QR Code.



## HOME RUNS

#	Player (F)	Opponent (Date)	OB	Inn.	Outs
1.	Pereira (1)	\$ at FGCU (2-10)	0	2	0
2.	Cagle (1)	\$ at FGCU (2-10)	2	5	1
3.	Logoleo (1)	\$ vs. Kent State (2-11)	2	1	2
4.	Cagle (2)	\$ vs. LIU (2-12)	2	6	2
5.	Guimbarda (1)	% vs. No. 18 Tennessee (2-18)	0	3	2
6.	Cagle (3)	% vs. No. 6 Washington (2-20)	0	6	2
7.	Guimbarda (2)	at Charlotte (2-23)	1	4	0
8.	Guimbarda (3)	# Boston University (2-25)	1	2	0
9.	Logoleo (2)	# Boston University (2-25)	1	5	1
10.	Vieira (1)+	# Akron (2-26)	3	1	2
11.	Clark (1)+	# Akron (2-26)	0	3	2
12.	Moore (1)	# Boston University (2-26)	1	3	2
13.	Cagle (4)	Gardner-Webb (3-1)	2	3	0
14.	Guimbarda (4)	Gardner-Webb (3-1)	0	3	0
15.	Cagle (5)	* Virginia Tech (3-6)	0	7	0
16.	Guimbarda (5)	! Illinois (3-13)	2	3	2
17.	Russ (1)	! Liberty (3-13)	0	1	1
18.	Cagle (6)	Winthrop (3-15)	0	1	2
19.	Logoleo (3)	Winthrop (3-15)	2	3	2
20.	Cagle (7)	Winthrop (3-15)	2	4	2
21.	Clark (2)	* at Duke (3-18)	0	6	0
22.	Russ (2)	* at Duke (3-20)	0	7	1
23.	Pereira (2)	at Georgia (3-23)	0	2	2
24.	Logoleo (4)	* Louisville (3-26)	2	2	2
25.	Clark (3)	* Louisville (3-26)	0	3	1
26.	Cagle (8)	* Louisville (3-26)	0	3	1
27.	Clark (4)	* Louisville (3-26)	0	5	0
28.	Cagle (9)	South Carolina (3-30)	2	1	0
29.	Logoleo (5)	South Carolina (3-30)	0	5	2
30.	Clark (5)	South Carolina (3-30)	0	6	1
31.	Logoleo (6)	* North Carolina (4-1)	2	1	2
32.	Vieira (2)	* North Carolina (4-1)	0	4	0
33.	Logoleo (7)	* North Carolina (4-1)	3	7	1
34.	Guimbarda (6)	* North Carolina (4-2)	1	3	0
35.	Moore (2)	* North Carolina (4-2)	0	4	0
36.	Guimbarda (7)	* North Carolina (4-2)	2	4	1
37.	Guimbarda (8)	* North Carolina (4-3)	0	2	0
38.	Logoleo (8)	* North Carolina (4-3)	1	2	0
39.	Vieira (3)	* North Carolina (4-3)	0	2	0
40.	Guimbarda (9)	* North Carolina (4-3)	1	5	2
41.	Guimbarda (10)	Furman (4-6)	1	7	2
42.	Oda (1)	Furman (4-6)	1	2	0
43.	Clark (6)	* Pitt (4-8)	0	4	2
44.	Logoleo (9)	* Pitt (4-8)	1	5	1
45.	Pereira (3)	* Pitt (4-9)	0	5	1
46.	Clark (7)	* Pitt (4-9)	0	7	1
47.	Logoleo (10)	* Pitt (4-9)	2	7	2
48.	Pereira (4)	* Pitt (4-10)	2	3	0
49.	Taylor (1)	* Pitt (4-10)	0	5	0
50.	Vieira (4)	* Florida State (4/21)	0	5	0
51.	Cagle (10)	* Florida State (4/21)	0	6	1
52.	Logoleo (11)	* Florida State (4/21)	0	7	0
53.	Clark (8)	* Florida State (4/22)	0	1	1
54.	Clark (9)	* Florida State (4/22)	1	3	0
55.	Clark (10)	* Florida State (4/22)	0	5	1

+ - Grand Slam  
++ - Inside the Park Home Run

## CLEMSON VS. RANKED TEAMS

2020						
Date	Opponent	CU NFCA, ESPN	Opp. NFCA, ESPN	W-L	Score	
2-26	Georgia	NR	14, 15	W	4-1	
2021						
Date	Opponent	CU NFCA, ESPN	Opp. NFCA, ESPN	W-L	Score	
2-18	* Virginia Tech	RV, N/A	14, 15	W	8-1	
2-19	* Virginia Tech (1)	RV, N/A	14, 15	L (5)	0-9	
2-19	* Virginia Tech (2)	RV, N/A	14, 15	L	1-4	
3-26	* Duke (1)	20, 21	11, 12	L	0-2	
3-26	* Duke (2)	20, 21	11, 12	L	1-3	
3-27	* Duke	20, 21	11, 12	W	4-1	
3-28	* Duke	20, 21	11, 12	W	4-2	
5-14	^ Virginia Tech	13, 10	20, 20	W	2-0	
5-15	^ Duke	13, 10	21, 21	L	0-1	
5-22	! Alabama	13, 10	3, 3	L	0-6	
5-23	! Alabama	13, 10	3, 3	L	0-5	
2022						
Date	Opponent	CU NFCA, ESPN	Opp. NFCA, ESPN	W-L	Score	
2-11	Texas	15, 14	10, 8	L	0-4	
2-18	Tennessee	15, 12	18, 15	W (9)	4-3	
2-19	Northwestern	15, 12	RV, 23	L	0-7	
2-20	Washington	15, 12	6, 5	W	2-0	
3-4	* Virginia Tech	14, 9	6, 6	L	0-6	
3-5	* Virginia Tech	14, 9	6, 6	L	0-4	
3-6	* Virginia Tech	14, 9	6, 6	L	2-4	
3-18	* Duke	17, 15	13, 8	L	2-6	
3-19	* Duke	17, 15	13, 8	W (5)	10-2	
3-20	* Duke	17, 15	13, 8	L	1-7	
3-23	Georgia	16, 15	17, 21	L	2-3	
4-14	* Notre Dame	16, 16	23, 25	W	3-2	
4-15	* Notre Dame	16, 16	23, 25	L	0-4	
4-16	* Notre Dame	16, 16	23, 25	W	2-1	
4-21	* Florida State	17, 17	5, 5	L	4-5	
4-22	* Florida State	17, 17	5, 5	L	6-7	
4-23	* Florida State	17, 17	5, 5	L	0-6	

**Bold** denotes home game  
\* - ACC regular-season game; ^ - ACC Championship; ! - Regionals

<b>Total</b>	<b>10-19</b>
Home	6-8
Away	1-8
Neutral	3-3
Non-Conference	3-5
ACC Only	7-14

## TEAM SUPERLATIVES

OFFENSE	
At bats	34, at Charlotte (Feb. 23)
Runs scored	12, 2x, at North Carolina (Apr. 3)
Hits	13, 2x, at North Carolina (Apr. 1)
RBI	12, at North Carolina (Apr. 1)
Doubles	6, at Charlotte (Feb. 23)
Triples	2, vs. Texas Tech (Feb. 17)
Home runs	4, 2x, at North Carolina (Apr. 3)
Walks	8, 2x, at North Carolina (Apr. 3)
Strikeouts	13, Virginia Tech (Mar. 6)
Sac flies	1, 7 times
Stolen bases	6, Furman (Apr. 6)
Hit by pitch	4, at North Carolina (Apr. 2)
FIELDING	
Putouts	27, vs. Tennessee (Feb. 18)
Assists	14, 3x, Furman (Apr. 6)
Errors	4, Virginia Tech (Mar. 5)
DPs turned	3, Mercer (Mar. 9)
PITCHING	
Innings pitched	9.0, vs. Tennessee (Feb. 18)
Runs allowed	7, 3x at Florida State (Apr. 22)
Earned runs	7, at Duke (Mar. 20)
Walks allowed	6, at Charlotte (Feb. 23)
Strikeouts	13, 2x, Gardner-Webb (Mar. 1)
Hits allowed	12, 2x, Notre Dame (Apr. 16)

## LAST TIME..

OFFENSE	
Hit two HRs in a game	Marissa Guimbarda (at North Carolina, 4/3/22)
Hit three HRs in a game	McKenzie Clark (at Florida State, 4/22/22)
Hit two HRs in an inning	N/A
Hit grand slam	Alia Logoleo (at North Carolina, 4/1/22)
Leadoff HR [inning]	Alia Logoleo (at Florida State, 4/21/22)
Walkoff HR	Marissa Guimbarda (Furman, 4/6/22)
Walkoff HR [run rule]	Alia Logoleo (Boston U, 2/25/22)
Pinch-hit HR	N/A
Inside the Park HR	McKenzie Clark (Akron, 2/26/22)
HR in back-to-back games	Cammy Pereira (Pitt, 4/9/22) & Pitt, 4/10/22)
Back-to-back HRs	Alia Logoleo & Aby Vieira (at UNC, 4/3/22)
Two doubles in a game	Aby Vieira (at Florida State, 4/21/22)
Three doubles in a game	N/A
Two triples in a game	N/A
Hit for the cycle	N/A
Four hits in a game	McKenzie Clark (Akron 2/26/22)
Drove in five runs	Marissa Guimbarda (at North Carolina, 4/2/22)
Drove in six runs	Valerie Cagle (at FGCU, 2/10/22)
Drove in seven runs	N/A
Drove in eight runs	Alia Logoleo (at North Carolina, 4/1/22)
Drove in 10 runs	Alia Logoleo (at Syracuse, 5/9/21)
Scored four runs	Alia Logoleo (at Syracuse, 5/9/21)
Walkoff hit [non-HR]	Cammy Pereira (Notre Dame, 4/16/22 -- single)
Walkoff [non-hit]	Valerie Cagle (Notre Dame, 4/14/22 -- fielder's choice)
Walkoff [pinch hitter]	Kyah Keller (Liberty, 3/13/22 -- single)
PITCHING	
Threw a no-hitter	Millie Thompson (5.0 IP, Furman, 4/6/22)
Threw a combined no-hitter	Regan Spencer & Millie Thompson (5.0 IP vs. Kent State, 2/11/22)
Threw a perfect game	N/A
Threw a solo shutout	Millie Thompson (Furman, 4/6/22)
Had 14 strikeouts	Valerie Cagle (Georgia Tech, 5/13/21)
Had 13 strikeouts	Valerie Cagle (vs Tennessee, 2/18/22)
Had 12 strikeouts	Valerie Cagle (at North Carolina, 4/1/22)
Had 11 strikeouts	Valerie Cagle (South Carolina, 3/30/22)
Had 10 strikeouts	Valerie Cagle (vs No. 6/Washington, 2/20/22)
Pitched >7 innings	Valerie Cagle (8.0 IP, vs. Liberty, 3/13/22)
TEAM	
Won 10 straight games	2022 (11: Mar. 30 - Apr. 14)
Won 15 straight games	2021 (19: Mar. 27 - May 8)
Won 20 straight games	N/A
Extra-Innings victory	3/14/22, No. 17 Clemson 1, Liberty 0 (8 Inn.)
Extra-Innings loss	3/27/22, No. 16 Clemson 2, Louisville 4 (8 Inn.)
Played 11 innings	3/19/21, No. 23 Clemson 4, at Louisville 0
Played 10 innings	N/A
Played nine innings	2/18/22, No. 15 Clemson 4, No. 18 Tennessee 3
Played eight innings	3/27/22, No. 16 Clemson 2, Louisville 4
Was no-hit	4/15/22, No. 16 Clemson 0, No. 23 Notre Dame 4
Was shut out	4/23/22, No. 17 Clemson 0, No. 5 Florida State 6
Beat a ranked opponent	4/16/22, No. 16 Clemson 2, No. 23 Notre Dame 1
Beat a top-10 opponent	2/20/22, No. 15 Clemson 2, No. 6 Washington 0
Beat a top-10 ACC opponent	N/A
Run-ruled a ranked opponent	3/19/22, No. 17 Clemson 10, No. 13 Duke 2
Tied an opponent	N/A

## PLAYER SUPERLATIVES

OFFENSE	
At bats	5, 2x, McKenzie Clark (vs. Tennessee - Feb. 18)
Runs scored	4, McKenzie Clark (at FGCU - Feb. 10)
Hits	4, McKenzie Clark (Akron - Feb. 26)
RBI	8, Alia Logoleo (at North Carolina - Apr. 1)
Doubles	2, 4 times
Triples	1, 9 times
Home runs	3, McKenzie Clark (at Florida State - Apr. 22)
Walks	3, Valerie Cagle (Akron - Feb. 26)
Strikeouts	3, 6 times
Sac flies	1, 7 times
Stolen bases	2, 4 times
Hit by pitch	2, 3x, Sam Russ (North Carolina - Apr. 2)
FIELDING	
Putouts	14, Bailey Taylor (Notre Dame - Apr. 14)
Assists	6, 5 times
Errors	2, 3x, Kyah Keller (at North Carolina - Apr. 1)
PITCHING	
Innings pitched	9.0, Valerie Cagle (vs. Tennessee - Feb. 18)
Runs allowed	7, Brooke McCubbin (vs. Northwestern - Feb. 19)
Earned runs	6, 2x, Valerie Cagle (at Duke - Mar. 18)
Walks allowed	3, 7 times
Strikeouts	13, Valerie Cagle (vs. Tennessee - Feb. 18)
Hits allowed	9, 3x, Valerie Cagle (Notre Dame - Apr. 16)

# ROSTER

## NUMERICAL

#	Player	Pos.	B/T	Yr.	Ht.	Hometown	Previous School / High School
1	Rachel Gibson	RHP	R-R	Fr.	5-9	Ringgold, Ga.	Heritage HS
2	Brooke McCubbin	RHP/INF	R-R	Fr.	5-10	Locust Grove, Ga.	Locust Grove HS
3	Sam Russ	OF	L-R	+Gr.	5-8	Charlotte, N.C.	NC State / Providence Day HS
4	Aby Vieira	C/UTL	L-R	Fr.	5-9	Mission Viejo, Calif.	Mission Viejo HS
5	Ansley Houston	INF	R-R	So.	5-6	Grantville, Ga.	Newnan HS
6	Carlee Shannon	OF	R-R	**So.	5-7	Chester, S.C.	York Comprehensive HS
7	McKenzie Clark	OF	R-R	So.	5-5	Myakka City, Fla.	Lakewood Ranch HS
8	Grace Hiller	INF/OF	R-R	Fr.	5-9	Macon, Ga.	Tattal Square Academy
9	Sarah Howell	C/UTL	R-R	So.	5-4	Oxford, Ala.	Oxford HS
10	Emma Whitfield	RHP	L-R	*So.	5-9	Chaska, Ga.	Stephens County HS
11	Haylee Whitesides	RHP/INF	R-R	Fr.	5-5	Duncan, S.C.	Byrnes HS
12	Cammy Pereira	INF/OF	L-R	**Gr.	5-6	Winston-Salem, N.C.	Furman University / West Forsyth HS
13	Abi Stuart	C/UTL	R-R	*So.	5-9	Snow Camp, N.C.	Southern Alamance HS
15	Madison May	OF/INF	R-R	*So.	5-9	Valdosta, Ga.	Lowndes HS
16	Alia Logoleo	INF/OF	R-R	*So.	5-8	Nashville, Tenn.	Hillsboro HS
17	Regan Spencer	RHP	R-R	So.	5-11	Lexington, N.C.	North Davidson HS
18	Bailey Taylor	INF	R-R	*Gr.	5-7	Winnsboro, S.C.	Troy University / Richard Winn Academy
19	Jaden Cheek	INF/OF	R-R	So.	5-9	Carnesville, Ga.	Franklin County HS
21	Jadelyn Ruszkowski	INF	L-L	Fr.	5-8	Lithia, Fla.	Newsome HS
23	JoJo Hyatt	C	R-R	**So.	5-8	Buford, Ga.	Buford HS
24	Arielle Oda	OF/INF	L-R	**So.	5-4	Buford, Ga.	Buford HS
25	Marissa Guimbarda	UTL	R-R	*Gr.	5-6	Suwanee, Ga.	Furman University / Lambert HS
27	Grace Mattimore	C/UTL	R-R	*Gr.	5-7	Ashburn, Va.	Army West Point / Broad Run HS
28	Maddie Moore	INF	R-R	Fr.	5-7	Loomis, Calif.	Del Oro HS
42	Morgan Johnson	OF	R-R	*So.	6-1	Evans, Ga.	Evans HS
58	Kyah Keller	INF	R-R	*So.	6-0	Hollywood, Ala.	Battle Ground Academy
72	Valerie Cagle	P/UTL	L-R	*So.	5-9	Yorktown, Va.	Homeschooled
77	Hannah Goodwin	INF	R-R	**Fr.	5-8	West Columbia, S.C.	White Knoll HS
87	Millie Thompson	LHP/INF	L-L	So.	5-7	Bedford, Va.	Liberty HS

### Head Coach:

John Rittman (3rd season • New Mexico State '86)

### Associate Head Coach:

Kyle Jamieson (3rd season • Brock University '97, Nipissing University '98)

### Assistant Coach:

Courtney Breault (3rd season • Nebraska '13, Clemson '21)

### Volunteer Assistant Coach:

Reese Jacobs (3rd season • Georgia Southern '79, Tennessee '81)

### Graduate Assistant Coach:

Alyssa Bilodeau (1st season • Jacksonville '21)

### Director of Operations:

Jeannie Murphy (3rd season • Oklahoma '10, Concordia University Irvine '14)

### Student Manager:

Amanda Fitzwilliam (2nd season • Clemson '24)

### Student Manager:

Anna Johnson (1st season • Clemson '23)

### Student Manager:

Olivia Turpin (1st season • Clemson '24)

### Associate AD/Sport Supervisor:

Natalie Honnen (3rd season • University of Florida '03 & '05)

### Athletic Trainer:

Katie Rovtar (3rd season • University of Toledo '06, Virginia Tech '08)

### Strength & Conditioning Coach:

Ryan Metzger (3rd season • University of Wisconsin-Oshkosh '11, University of Kentucky '15)

### Athletic Communications Contact:

Valerie Johnson (1st season • Central Michigan '18)

### Academic Advisor:

Kayla Velasquez (1st season • Bowling Green '17, Northwestern State '19)

### Assistant Director of Equipment:

Ben Miller (3rd season • Clemson '16 & '18)

### Supervisor of Athletic Grounds:

Mike Echols (3rd season • Clemson '85)

## ALPHABETICAL

#	Player	Pos.	Cl.
72	Valerie Cagle	RHP/UTL	*So.
19	Jaden Cheek	INF/UTL	So.
7	McKenzie Clark	OF	So.
1	Rachel Gibson	RHP	Fr.
77	Hannah Goodwin	INF	*So.
25	Marissa Guimbarda	OF/UTL	*Sr.
8	Grace Hiller	INF/OF	Fr.
5	Ansley Houston	INF	So.
9	Sarah Howell	C/UTL	So.
23	JoJo Hyatt	C	**So.
42	Morgan Johnson	OF	*So.
58	Kyah Keller	INF	*So.
16	Alia Logoleo	OF	*So.
27	Grace Mattimore	C/UTL	*So.
15	Madison May	INF/OF	*So.
2	Brooke McCubbin	RHP/INF	Fr.
28	Maddie Moore	INF	Fr.
24	Arielle Oda	INF/OF	**So.
12	Cammy Pereira	INF/OF	**Sr.
3	Sam Russ	OF	+Gr.
29	Jaden Ruszkowski	INF	Fr.
6	Carlee Shannon	OF	**So.
17	Regan Spencer	RHP	So.
13	Abi Stuart	C/UTL	So.
18	Bailey Taylor	INF	*So.
87	Millie Thompson	LHP/INF	So.
4	Aby Vieira	C/UTL	Fr.
11	Haylee Whitesides	RHP/INF	Fr.
10	Emma Whitfield	RHP	*So.

## PRONUNCIATIONS

#	Name	Pronunciation
4	Aby Vieira	vee-AIR-uh
12	Cammy Pereira	puh-RAIR-uh
16	Alia Logoleo	lo-guh-LAY-oh
21	Jadelyn Ruszkowski	russ-COW-ski
24	Arielle Oda	OH-duh
25	Marissa Guimbarda	GUHM-bar-duh
87	Millie Thompson	MILL-ee
	Kyle Jamieson	pronounced like, "Jamison"
	Courtney Breault	BREE-ahit
	Katie Rovtar	ROHV-tahr

\* - one redshirt; + - transfer using extra year of eligibility granted due to Covid-19; Note: "Gr." denotes senior unless otherwise noted.

## PRESEASON HONORS

### #1 RACHEL GIBSON • RHP • FR.

- One of Top 75 Impact Freshmen by D1Softball.com

### #2 BROOKE MCCUBBIN • RHP/INF • FR.

- Softball America ACC Top Newcomer to Watch

### #7 MCKENZIE CLARK • OF • SO.

- Preseason All-ACC selection

### #25 MARISSA GUIMBARDA • UTL • \*GR.

- No. 91 on Extra Innings Softball's Extra Elite 100 List
- No. 82 on Softball America's 2022 Preseason College Top 100 list

### #72 VALERIE CAGLE • RHP/UT • \*SO.

- Preseason All-ACC selection
- USA Softball Collegiate Player of the Year Top 50 Watch List
- No. 6 on Extra Innings Softball's Extra Elite 100 list
- No. 19 on Softball America's 2022 Preseason College Top 100 list
- Preseason D1Softball.com ACC Player of the Year
- Preseason D1Softball.com First Team All-American
- Preseason Softball America First Team All-American
- D1Softball.com Preseason Top 10 Pitcher Power Rankings

## CAREER MILESTONES

Upcoming Milestone	Has	Needs
Marissa Guimbarda 60 home runs	*58	2
Marissa Guimbarda 175 RBIs	*170	5
Cammy Pereira 100 runs	*99	1
Cammy Pereira 25 stolen bases	*23	2
Sam Russ 175 runs	*153	22
Sam Russ 130 stolen bases	*125	5
Valerie Cagle 150 hits	142	8
Valerie Cagle 50 home runs	37	13
McKenzie Clark 100 runs	82	18
McKenzie Clark 50 stolen bases	29	21
Alia Logoleo 100 hits	81	19
Alia Logoleo 75 runs	53	22
JoJo Hyatt 75 hits	51	24
JoJo Hyatt 50 RBIs	27	23
Valerie Cagle 450 Innings Pitched	433.1	16.2
Valerie Cagle 600 strikeouts	504	96
Valerie Cagle 72 wins	50	22
Millie Thompson 200 strikeouts	155	45
Regan Spencer 75 strikeouts	51	24

\*Clemson and Previous School Combined

## INDIVIDUAL RANKINGS

Player	Category	NCAA/ACC	Value
Team	ERA	13/3	1.87
Team	Shutouts	7/2	16
Team	So/W Ratio	17/2	4.01
Regan Spencer	ERA	10/1	1.21
Millie Thompson	Hit Batters	21/2	3
Valerie Cagle	Saves	21/5	3
Sam Russ	Stolen Bases	39/1	22
Millie Thompson	So/W Ratio	18/1	7.08
Sam Russ	Triples	28/3	4
Millie Thompson	Walks Per 7 IP	26/1	1.01
Team	Home Runs/Game	37/4	1.17
Player	Category (Career)	Rank (D1)	Value
Sam Russ	Stolen Bases	1	125
Marissa Guimbarda	Home Runs	6	58
Sam Russ	Runs Scored	32	153
Valerie Cagle	Wins	46	50

# HEAD COACH JOHN RITTMAN



**John Rittman**, a longtime head coach and member of the USA Softball Women's National Team coaching pool, was named the first Head Coach of Clemson Softball on Nov. 3, 2017. Rittman came to Clemson after serving as the Associate Head Coach at the University of Kansas from 2015-17. Rittman joined the Jayhawks after 18 seasons as the Head Coach at Stanford University and 10 years on the United States National Team coaching staff (2001-08, 2016-18).

During the second season and first complete year, Rittman propelled Clemson to even higher heights by becoming the ACC Regular Season Champions after posting a 29-5 ACC record and winning seven ACC series, including six series sweeps. The Tigers were ACC Tournament Runner-Ups after shutting out both Georgia Tech and then-No. 20 Virginia Tech in the first two rounds before dropping the championship game, 1-0, to then-No. 21 Duke. Rittman was named ACC Coach of the Year and guided Valerie Cagle to being the first student-athlete in league history to be named both the ACC Freshman and Player of the Year in the same season. Clemson finished with six individuals earning nine All-ACC team selections following the regular season, including three on the first team. Cagle and freshman McKenzie Clark were named to the NFCA All-Region team. The honors continued to roll in for Cagle as she became the first Clemson softball All-American garnering second team honors from the NFCA, was a JWOS First Team All-American, a Top-Three Finalist for the NFCA's National Freshman of the Year and a Top-10 Finalist for USA Softball's Collegiate Player of the Year. Behind Rittman's efforts, Clemson climbed as high as No. 13 in the NFCA national rankings and No. 10 in the ESPN/USA Softball rankings before finishing the season at No. 18 in the NFCA poll. Rittman led the Tigers to their first postseason appearance traveling to the Tuscaloosa Regional to defeat Troy twice, including a five-inning run-rule victory in the opening game that capped off a historic second season.

In its inaugural season, Rittman transcended Clemson into a nationally-respected program. Rittman guided Clemson, which was predicted to finish in 10th in the conference, according to the 2020 ACC preseason poll, to a 19-8 overall record, including 5-1 in ACC play. The Tigers, who won both of their ACC series against Virginia and Pitt, won 11 of their final 12 games before the 2020 season was cut short due to the coronavirus pandemic (COVID-19). Additionally, Clemson went 14-2 at Clemson Softball Stadium (now McWhorter Stadium), which included a 13-game home win streak that spanned 25 days. Rittman and the Tigers generated plenty of enthusiasm among the Clemson faithful as the first-year program ranked fourth nationally in attendance (24,860) and fifth in average attendance (1,544/game) in 2020. On March 3, the National Fastpitch Coaches Association (NFCA) announced the first-year program received votes (10) in the fifth edition of the 2020 USA Today/NFCA D1 Top 25 Coaches Poll. The announcement came after Clemson defeated then-No. 14 Georgia, 4-1, on Feb. 26 at Clemson Softball Stadium before sweeping the Cavaliers to win its first-ever ACC series. Under the direction of Rittman, three Tigers in Valerie Cagle (twice), Marissa Guimbarda and Logan Caymol earned

ACC weekly honors on four occasions, the most by any ACC program in 2020. Cagle, a true freshman in 2020, was second in the nation in RBIs (36), while Guimbarda finished the season fourth nationally in home runs (11). Both Cagle and Guimbarda led the ACC in RBIs and home runs, respectively.

At Stanford, Rittman and the Cardinals recorded 18-consecutive winning seasons, made 16-straight NCAA appearances, notched 13 40-win seasons and produced at least one All-American in 15 of his last 17 seasons. As head coach, Rittman accumulated a 750-351-3 overall mark, coached a national player of the year, 16 All-Americans, earned five Super Regional appearances, two Women's College World Series appearances and maintained a spot in every regular-season NFCA top-25 poll for more than a decade.

Rittman served on the staff of the USA Softball team which won gold at both the 2016 Women's Softball World Championship and the 2017 Pan Am Qualifier. He also worked with Team USA from 2001-08, coaching the 2004 Olympic gold medal winners in Athens and the 2008 silver medalists in Beijing. Team USA also won gold medals at the 2002 and 2006 World Championship and the 2003 and 2007 Pan Am Games.

Prior to being named head coach at Stanford, Rittman spent four seasons as an assistant coach at the University of Washington, focusing on hitting and defense. Rittman helped start the program and, within just four seasons, the Huskies had earned a No. 1 national ranking, won the 1996 Pac-10 Championship, made three NCAA Tournament appearances and notched a runner-up finish in their first trip to the Women's College World Series. Washington became the first team since Texas A&M (1983) to advance to the championship game in its first appearance at the WCWS.

Before his appointment at Washington, Rittman spent two seasons as an assistant at the University of Minnesota. During his second year, the Golden Gophers won the Big Ten Conference with a 20-4 league record. The Gophers set team and individual records in almost every offensive category. The Minnesota squad led the nation in hits and total bases en route to a No. 15 national ranking. Rittman also helped produce two Golden Gopher All-Americans.

From 1988-90, Rittman was an assistant coach at the University of Oregon. During his stay, the Ducks played in the 1989 Women's College World Series, set several team and individual offensive records and produced an All-American.

Rittman graduated from New Mexico State with a degree in journalism in 1986. He was a three-year letterwinner in baseball as an outfielder at NMSU after transferring from Yavapai Junior College in Prescott, Arizona.

Rittman and his wife, Lorie, a former softball player at the University of Oklahoma, are the parents of Justin, a UCLA graduate and former fullback for the Bruins, and Jake, a senior punter at Notre Dame.

## HEAD COACH JOHN RITTMAN

**Education:** Bachelor's degree in journalism at New Mexico State (1986).

**Playing Experience:** Three-year letterman at New Mexico State (1984-86).

**Coaching Experience:** Assistant Coach at Oregon (1988-90) ... Assistant Coach at Minnesota (1991-92) ... Assistant Coach at Washington (1993-96) ... Head Coach at Stanford (1997-2014) ... Associate Head Coach at Kansas (2015, 2017) ... Head Coach at Clemson (2020-present).

**Family:** Wife, Lorie Rittman ... sons, Justin and Jake.



### RITTMAN'S HEAD COACHING RECORD

Year	School	W-L	NCAA
1997	Stanford	31-27-1	
1998	Stanford	41-18	Regionals
1999	Stanford	40-25	Regionals
2000	Stanford	45-18	Regionals
2001	Stanford	54-16-1	World Series
2002	Stanford	44-20	Regionals
2003	Stanford	41-26	Regionals
2004	Stanford	49-19	World Series
2005*	Stanford	43-16	Super Regionals
2006	Stanford	42-18	Super Regionals
2007	Stanford	35-21-1	Regionals
2008	Stanford	49-15	Super Regionals
2009	Stanford	48-11	Super Regionals
2010	Stanford	37-19	Regionals
2011	Stanford	42-17	Super Regionals
2012	Stanford	40-19	Regionals
2013	Stanford	39-21	Regionals
2014	Stanford	30-25	
2020^	Clemson	19-8	N/A
2021*	Clemson	44-8	Regionals
2022	Clemson	33-14	

\* - conference champion; ^ - season suspended March 12 and later canceled due to a coronavirus (COVID-19) pandemic

### RITTMAN'S HEAD COACHING RECORD

School	Seasons	Years	W-L	Win %
Stanford	18	1997-2014	750-351-3	.681
Clemson	3	2020-22	96-30	.762
<b>Totals</b>	<b>21</b>	<b>1997-2014, 2020-22</b>	<b>846-381-3</b>	<b>.688</b>

### RITTMAN VS. ACC AS CLEMSON HEAD COACH

Team	Overall	Home	Away	Neutral
Boston College	4-0	4-0	0-0	0-0
Duke	3-6	2-2	1-2	0-2
Florida State	0-3	0-0	0-3	0-0
Georgia Tech	4-0	0-0	3-0	1-0
Louisville	6-1	2-1	4-0	0-0
North Carolina	7-0	4-0	3-0	0-0
NC State	4-0	4-0	0-0	0-0
Notre Dame	2-1	2-1	0-0	0-0
Pittsburgh	5-1	2-1	3-0	0-0
Syracuse	3-1	0-0	3-1	0-0
Virginia	7-0	3-0	4-0	0-0
Virginia Tech	2-5	1-5	0-0	1-0
<b>Totals</b>	<b>47-18</b>	<b>24-10</b>	<b>21-6</b>	<b>2-2</b>

**Note:** Clemson's neutral-site games against Duke (Feb. 7, 2020) was not considered an ACC contest towards the league's standings.

# 2022 BROADCAST SHEET

1



## RACHEL GIBSON

Fr. • RHP • 5-9 • Ringgold, Ga. • Heritage HS

	ERA	W-L	APP	CG	SHO	IP	SO
2022	99.00	0-0	1	0	0/0	0.0	0
Career	99.00	0-0	1	0	0/0	0.0	0

Season Highs: NP (22)

- Made first collegiate appearance against Akron
- D1 Softball Preseason Top 75 Impact Freshmen selection
- Prior to Clemson:
  - Two time GHSA 4A State Champion (2018, 2019)
  - Two time GHSA 4A Pitcher of the Year (2018, 2019)
  - Two time Best of Preps Softball Player of the Year (2018, 2019)
  - 2019 Georgia Dugout Club 4A Player of the Year

2



## BROOKE McCUBBIN

Fr. • RHP/INF • 5-10 • Locust Grove, Ga. • Locust Grove HS

	ERA	W-L	APP	CG	SHO	IP	SO
2022	2.10	5-2	17	0	0/6	43.1	22
Career	2.10	5-2	17	0	0/6	43.1	22

Season Highs: IP (5.1), SO (5), NP (110)

- Pitched season-high 5.1 innings vs. Northwestern
- Season-high five strikeouts vs. Winthrop
- Earned first collegiate save vs. Mercer and second at UNC
- Prior to Clemson:
  - 2020 Georgia Softball Player of the Year
  - 2019 GACA State Pitcher of the Year
  - 2019 GADC State 5A Player of the Year

3



## SAM RUSS

+Gr. • OF • 5-8 • Charlotte, N.C. • NC State (Providence Day HS)

	AVG	AB	RUNS	HITS	RBI	BB	SB
2022	.284	134	26	38	12	19	22
Career	.312	635	153	198	66	99	125

Season Highs: R (3), RBI (2, 3x), 3B (1, 4x), SB (2, 4x)

- Finished with three hits and two RBIs against LIU
- Had a sac fly and one hit vs. Virginia Tech on March 6
- Has 125 career stolen bases to lead the active NCAA D1 players
- Prior to Clemson:
  - Spent four seasons at NC State
  - Holds NC State's all-time record for career stolen bases (103) and single season record for stolen bases (32)

4



## ABY VIEIRA (VEE-AIR-UH)

Fr. • C/UTL • 5-9 • Mission Viejo, Calif. • Mission Viejo HS

	AVG	AB	RUNS	HITS	RBI	BB	SB
2022	.342	76	10	26	12	2	0
Career	.342	76	10	26	12	2	0

Season Highs: H (3), RBI (4), R (2), HR (1, 4x)

- Appeared in a total of 31 games this season
- Went 3-for-3 with two doubles and a homer in FSU series opener
- Caught Spencer's and Thompson's combined no-hitter vs. Kent State
- Starting catcher in Clemson's upset over Washington
- Recorded first collegiate grand slam (and homer) against Akron
- Hit walk off single against Louisville on March 26 for run-rule victory
- Hit two home runs in series at North Carolina

5



## ANSLEY HOUSTON

So. • INF • 5-6 • Grantville, Ga. • Newnan HS

	AVG	AB	RUNS	HITS	RBI	BB	SB
2022	.000	0	9	0	0	0	2
Career	.000	1	9	0	0	0	2

Season Highs: R (1, 9x), SB (1, 2x)

- Has appeared as a pinch runner in 22 games this season
- First collegiate stolen base against Virginia Tech (March 5)
- Scored her first collegiate run against Boston University on Feb. 25
- ACC Academic Honor Roll (2021)
- Scored walk off run on Saturday vs. Notre Dame to secure series victory

6



## CARLEE SHANNON

\*\*So. • OF • 5-7 • Chester, S.C. • York Comprehensive HS

	AVG	AB	RUNS	HITS	RBI	BB	SB
2022	.000	0	11	0	0	0	13
Career	.000	0	34	0	0	1	40

Season Highs: R (1, 11x), SB (1, 13x)

- Appeared in 39 games in 2022 as a pinch runner
- Held a 19 stolen-base consecutive streak that ended in Clearwater, Fla. that began last season.
- Led the team in stolen-base percentage in 2021 (18-for-18)
- Her 18 stolen bases in 2021 were good for second on the team and tied for 10th in the ACC
- Started playing softball in high school after a career-ending gymnastics injury

7



## McKENZIE CLARK

So. • OF • 5-5 • Myakka City, Fla. • Lakewood Ranch HS

	AVG	AB	RUNS	HITS	RBI	BB	SB
2022	.312	144	35	45	26	17	6
Career	.335	313	82	105	55	36	29

Season Highs: R (4), H (4), RBI (4) 2B (2), SB (1, 6x)

- Hit three home runs in a single game at FSU on April 22
- Recorded Clemson's first inside the park home run against Akron
- Went 4-for-4 against Akron with one stolen base
- Hit two home runs in the same game against Louisville (March 26)
- Went 3-for-4 against South Carolina on March 30 with a home run
- 2022 Preseason All-ACC selection
- NFCA All-Region Southeast selection

8



## GRACE HILLER

Fr. • INF/OF • 5-9 • Macon, Ga. • Tattal Square Academy

	AVG	AB	RUNS	HITS	RBI	BB	SB
2022	-	-	-	-	-	-	-
Career	-	-	-	-	-	-	-

Season Highs:

- Prior to Clemson:
  - First Team All-7A Region
  - Led her HS in batting average, doubles and runs scored
  - Set HS single season batting average record (.515) in 2020
  - Selected for the Georgia Dugout Club Senior All-State Game

# 2022 BROADCAST SHEET

9



## SARAH HOWELL

*So.* • C/UTL • 5-4 • Oxford, Ala. • Oxford HS

	AVG	AB	RUNS	HITS	RBI	BB	SB
2022	-	-	-	-	-	-	-
Career	.083	12	5	1	0	0	4

**Season Highs:**

- Out during 2022 season due to injury
- Appeared in 23 games in 2021
- Scored the Tigers' game-winning run in the Tigers' 5-4 win at Georgia Tech

10



## EMMA WHITFIELD

*\*So.* • RHP • 5-9 • Toccoa, Ga. • Stephens County HS

	ERA	W-L	APP	CG	SHO	IP	SO
2022	7.00	0-0	1	0	0	1.0	1
Career	3.54	4-0	16	1	0	29.2	26

**Season Highs:** IP (1.0), NP (20)

- Made first appearance of 2022 against Akron
- Appeared in four games in 2021
- Registered a 3.94 ERA in 5.1 innings pitched
- Two time ACC Academic Honor Roll
- Earned the program's first-ever conference win in the circle against Virginia (Feb. 28, 2020)

11



## HAYLEE WHITESIDES

*Fr.* • RHP/INF • 5-5 • Duncan, S.C. • Byrnes HS

	ERA	W-L	APP	CG	SHO	IP	SO
2022	-	-	-	-	-	-	-
Career	-	-	-	-	-	-	-

**Season Highs:**

- Prior to Clemson:
- Two time South Carolina 5A State Champion (2017, 2021)
- Two time member of the Spartanburg Herald Journal All-Area Team (2018, 2019)

12



## CAMMY PEREIRA (PUH-RAYR-UH)

*\*\*Gr.* • INF/OF • 5-6 • Winston-Salem, N.C. • Furman (West Forsyth HS)

	AVG	AB	RUNS	HITS	RBI	BB	SB
2022	.284	141	26	40	21	11	1
Career	.300	580	99	174	69	26	23

**Season Highs:** R (2, 4x), H (3, 4x), HR (1, 4x), RBI (3, 2x)

- Hit Clemson first home run of the 2022 season at FGCU
- Hit a solo home run at Georgia and two homers in series vs. Pitt
- Tallied three RBIs off two hits vs. Kent State
- Hit walk off single vs. Notre Dame to clinch the series victory on Saturday
- Has four games with three hits including Charlotte, Boston U, Liberty and Duke
- Is a Weaver-James-Corrigan postgraduate scholarship award recipient (2022)

13



## ABI STUART

*\*So.* • C/UTL • 5-9 • Snow Camp, N.C. • Southern Alamance HS

	AVG	AB	RUNS	HITS	RBI	BB	SB
2022	.000	4	1	0	0	2	0
Career	.243	107	15	26	19	9	0

**Season Highs:** R (1), BB (1, 2x)

- Has appeared in five games in 2022 (DP in 2, PR in 1, PH 2)
- Scored one run against Kent State and drew a walk at FGCU
- Played in 36 games, starting in 31 in 2021
- Hit .259 in 85 at bats with 10 runs and a .447 slugging percentage
- Posted an eight-game hitting streak, the third longest streak by any Tiger on the season
- Two time ACC Academic Honor Roll recipient

15



## MADISON MAY

*\*So.* • INF/OF • 5-9 • Valdosta, Ga. • Lowndes HS

	AVG	AB	RUNS	HITS	RBI	BB	SB
2022	.217	23	2	5	4	8	0
Career	.156	32	2	5	4	9	0

**Season Highs:** AB (4), H (2), R (1, 2x), RBI (2), BB (2, 2x)

- Hit a RBI double against Charlotte
- Went 1-for-1 with a double, two RBIs, two walks and one run scored against Texas Tech
- Finished with two hits against Wisconsin
- Recorded first career hit and run against LIU
- Two time ACC Academic Honor Roll recipient
- Reached base on four-straight balls in only plate appearance of the 2021 season

16



## ALIA LOGOLEO (LO-GUH-LAY-OH)

*\*So.* • INF/OF • 5-8 • Nashville, Tenn. • Hillsboro HS

	AVG	AB	RUNS	HITS	RBI	BB	SB
2022	.273	128	24	35	38	12	2
Career	.284	285	53	81	75	27	16

**Season Highs:** R (2, 4x), H (3, 2x), 2B (2), HR (2), RBI (8)

- Started at either SS or 3B every game this season
- Leads team with 11 homers and 38 RBIs
- Came up with a clutch three-run homer vs. Pitt
- Tallied 11 RBIs in North Carolina series off three homers in three games
- Hit a two-run homer to open scoring against Louisville on March 26
- Hit two grand slams in 2021 (only player to record a grand slam last year)
- Hit a grand slam, a three-run homer, a two-run homer and a double at Syracuse

17



## REGAN SPENCER

*So.* • RHP • 5-11 • Lexington, N.C. • North Davidson HS

	ERA	W-L	APP	CG	SHO	IP	SO
2022	1.21	6-2	20	1	1/4	52	31
Career	1.33	12-2	34	3	2/5	94.2	51

**Season Highs:** IP (7.0), SO (7), NP (84)

- Has six victories in the circle this season
- Pitched lights out vs. Notre Dame on Saturday to pick up a victory and clinch the series
- Threw Clemson's first combined no-hitter with Millie Thompson vs. Kent State
- Pitched 3.0 innings with four strikeouts against Kent State to earn the win
- Struck out three batters in 1.2 innings of work against Northwestern
- Earned the victory against Gardner-Webb after pitching 2.0 innings efficiently



# 2022 BROADCAST SHEET

18



## BAILEY TAYLOR

\*Gr. • INF • 5-7 • Winnsboro, S.C. • Troy (Richard Winn Academy)

	AVG	AB	RUNS	HITS	RBI	BB	SB
2022	.256	39	2	10	6	2	0
Career	.278	248	28	69	69	23	1

Season Highs: H (2, 2x), HPB (2), RBI (2), BB (2)

- Has started in 18 games this season and appeared in 27
- Hit solo home run on April 10 at Pitt
- Had two hits vs. Liberty on March 13
- Started the seventh inning rally in the opening game vs. Notre Dame
- Missed 2021 season due to injury
- Recorded a grand slam against Maryland helping Clemson become just the seventh program in NCAA Division I history to record two grand slams in a single inning

19



## JADEN CHEEK

So. • INF/UTL • 5-9 • Carnesville, Ga. • Franklin County HS

	AVG	AB	RUNS	HITS	RBI	BB	SB
2022	-	-	2	-	-	-	1
Career	.100	10	13	1	0	0	3

Season Highs: R (1, 2x), SB (1)

- Has appeared in seven games in 2022 as a pinch runner
- Scored first run of 2022 at North Carolina
- Stole first base of 2022 season vs. Furman
- Scored winning run vs. Notre Dame in opening game in walk off fashion
- Appeared in 39 games in 2021
- Made first career start as the Tigers' designated player against Furman
- Recorded first career hit on a single to right field against Furman

21



## JADEYN RUSZKOWSKI (RUSS-COW-SKI)

Fr. • INF • 5-8 • Lithia, Fla. • Newsome HS

	AVG	AB	RUNS	HITS	RBI	BB	SB
2022	-	-	-	-	-	-	-
Career	-	-	-	-	-	-	-

Season Highs:

- Prior to Clemson:
- Two time District Champion
- Member of the 9A First Team All-State as a designated player
- Had a batting average of .652 as a junior in HS

23



## JOJO HYATT

\*\*So. • C • 5-8 • Buford, Ga. • Buford HS

	AVG	AB	RUNS	HITS	RBI	BB	SB
2022	.214	56	1	12	6	5	0
Career	.241	212	16	51	27	18	0

Season Highs: H (2, 2x), 3B (1), RBI (3), BB (1, 5x) PO (13)

- Has appeared in 28 games this season
- Hit the walk-off triple to run-rule Texas Tech to open the SPCEI with three RBIs
- Brought in two runners in Clemson's 4-3 win over Tennessee
- Started 50 games at catcher in 2021
- Hit .223 with four runs, a .266 slugging percentage and .291 on-base percentage
- Hit first career home run at Virginia (Mar. 7, 2021)
- Two time ACC Academic Honor Roll recipient

24



## ARIELLE ODA (OH-DUH)

\*\*So. • INF/OF • 5-4 • Buford, Ga. • Buford HS

	AVG	AB	RUNS	HITS	RBI	BB	SB
2022	.290	31	12	9	2	6	5
Career	.241	51	34	12	6	13	10

Season Highs: R (2), H (2), SB (1, 5x)

- Made a catch at the wall in right field and hit a single vs. Virginia Tech (3/6)
- Has appeared in 42 games this season
- Hit first career homer vs. Furman
- Tallied a single in the seventh vs. Notre Dame that helped provide the comeback victory in the opening game of the series
- Scored one of four runs in the sixth inning in the Tigers' 5-3 comeback win at Virginia (Mar. 6, 2021)

25



## MARISSA GUIMBARDA (GUHM-BAR-DUH)

\*Gr. • OF/UTL • 5-6 • Suwanee, Ga. • Furman (Lambert HS)

	AVG	AB	RUNS	HITS	RBI	BB	SB
2022	.287	129	17	37	33	23	1
Career	.305	571	85	174	170	87	3

Season Highs: R (2, 4x), H (3, 2x), RBI (5), BB (2, 7x)

- Recorded the hit that scored the first run in Clemson's win over Washington
- Hit her 58th career home run to become the 196th player in D1 history to accomplish surpassing 50 HR in her career and sits fifth on the NCAA career home run list for active players
- Is a Weaver-James-Corrigan postgraduate scholarship award recipient (2021)
- No. 91 preseason player by Extra Innings Softball and No. 86 by Softball America
- Tallied eight RBIs in North Carolina series

27



## GRACE MATTIMORE

\*Gr. • C/UTL • 5-7 • Ashburn, Va. • Army West Point (Broad Run HS)

	AVG	AB	RUNS	HITS	RBI	BB	SB
2022	.143	7	1	1	0	2	0
Career	.273	260	41	71	44	58	1

Season Highs: AB (2), 2B (1), R (1), BB (1, 2x)

- Recorded a double and scored vs. Virginia Tech on March 6
- Had sac bunt to spur Clemson's eight-run inning at Duke on March 19
- Drew a walk as a pinch hitter vs. Mercer
- Played left field and had two at bats vs. Gardner-Webb
- Started in 40 games in 2021
- Is a Weaver-James-Corrigan postgraduate scholarship award recipient
- Hit .333 in 66 at bats in 2020 and led the ACC with 10 doubles

28



## MADDIE MOORE

Fr. • INF • 5-7 • Loomis, Calif. • Del Oro HS

	AVG	AB	RUNS	HITS	RBI	BB	SB
2022	.181	72	21	13	7	12	7
Career	.181	72	21	13	7	12	7

Season Highs: R (2, 3x), H (1, 13x), BB (2), SB (1, 7x)

- Has started in 45 games this season
- Recorded a hit and a run at FGCU on opening day
- Tallied a RBI single against South Carolina on March 30
- Scored the winning run for Clemson vs. Tennessee and the first run for Clemson against Washington
- Hit first career home run against Boston University on 2/26 and second at North Carolina on 4/2

# 2022 BROADCAST SHEET

42



## MORGAN JOHNSON

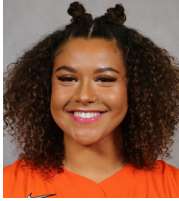
\*So. • OF • 6-1 • Evans, Ga. • Evans HS

	AVG	AB	RUNS	HITS	RBI	BB	SB
2022	-	-	-	-	-	-	-
Career	.288	52	9	15	18	8	4

Season Highs:

- Out during 2022 season due to injury
- Read her "My Story" feature on ClemsonTigers.com - Johnson penned a letter to Jackie Robinson for Black History Month - will be feature on Sportscenter in April
- Appeared in 30 games in 2021 and hit .350 in 40 at bats with a .725 slugging percentage
- Two time ACC Academic Honor Roll recipient
- Member of Clemson's POWER - a Women's Leadership Academy

58



## KYAH KELLER

\*So. • INF • 6-0 • Hollywood, Ala. • Battle Ground Academy

	AVG	AB	RUNS	HITS	RBI	BB	SB
2022	.208	48	1	10	9	5	0
Career	.234	141	8	33	26	11	0

Season Highs: H (2), RBI (2, 2x), BB (1, 5x)

- Pinch hit a RBI single against LIU to spur Clemson's eight-inning scoring run in the sixth
- Had a walk off pinch hit single vs. Liberty to bring in two runners
- Hit .256 in 90 at bats with six runs and a .367 slugging percentage in 2021
- Recorded two homers in CU's 12-1 win against North Carolina while going 3-for-3 with a career-best four RBI
- Two time ACC Academic Honor Roll member

72



## VALERIE CAGLE

\*So. • RHP/UTL • 5-9 • Yorktown, Va. • Homeschooled

	AVG	AB	RUNS	HITS	RBI	BB	SB
2022	.297	148	29	44	35	15	0
Career	.358	397	98	142	116	48	5

Season Highs: H (3, 2x), R (2, 6x), RBI (6), HR (2), HBP (1)

	ERA	W-L	APP	CG	SHO	IP	SO
2022	1.93	13-7	27	12	5/3	127	150
Career	1.60	50-20	86	46	16/5	433.1	504

Season Highs: IP (9.0), H (9, 2x), SO (13), BB (3, 4x)

- Tallied three hits and six RBIs at FGCU - including her first homer of the season
- Struck out 10 batters and hit a solo home run in Clemson's 2-0 upset over Washington
- Hit two home runs vs. Winthrop with four RBIs
- Has recorded 44 hits, 10 home runs and holds a .554 slugging percentage
- Has pitched 127 innings with 150 strikeouts
- Preseason All-ACC selection and D1 Softball Preseason First Team All-American
- Picked up 50 career wins and 500 career strikeouts in Notre Dame series
- Reached on FC that scored winning run in opening game vs. Notre Dame
- Joined Team USA's U-18 Junior Women's National Team

77



## HANNAH GOODWIN

\*\*Fr. • INF • 5-8 • West Columbia, S.C. • White Knoll HS

	AVG	AB	RUNS	HITS	RBI	BB	SB
2022	.000	5	0	0	0	0	0
Career	.341	87	15	30	16	5	1

Season Highs: AB (2)

- Made first appearance in 2022 as a pinch hitter vs. Charlotte
- Had one plate appearance against Gardner-Webb and Mercer
- Made first start in 2022 against UNC
- Missed 2021 season due to injury
- ACC Academic Honor Roll selection
- Started 26 games at shortstop in 2020
- Led the 2020 team with a .385 average during the shortened COVID season

87



## MILLIE THOMPSON (MILL-EE)

So. • LHP/INF • 5-9 • Bedford, Va. • Liberty HS

	ERA	W-L	APP	CG	SHO	IP	SO
2022	1.86	9-3	19	5	3/5	83	85
Career	1.95	18-4	38	8	3/7	161.2	155

Season Highs: IP (7.0, 3x), H (8, 2x), SO (11), NP (103)

- Threw her first solo no-hitter vs. Furman in five innings
- Struck out eight batters without giving up a walk in Clemson's 10-2 run-rule victory over Duke and struck out nine against Louisville the next week
- Threw Clemson's first combined no-hitter with Regan Spencer vs. Kent State
- Struck out a career-high 11 batters vs. Illinois
- Underwent successful surgery in December to correct a left forearm compartment syndrome injury

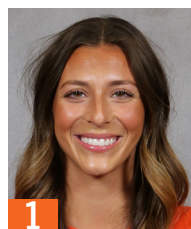
## QUICK FACTS

Nickname	Tigers
Location	Clemson, S.C. 29633
Colors	Clemson Orange & Regalia
Founded	1889
Enrollment	27,341
President	Dr. James P. Clements (Maryland-Baltimore County '85)
Director of Athletics	Graham Neff (Georgia Tech '06)
Conference	Atlantic Coast Conference
Facility (Capacity)	McWhorter Stadium (1,616)
Year Opened	2020
Dimensions	LF - 200, CF - 220, RF - 205
Record Crowd	1,616
Head Coach	John Rittman (New Mexico State '86)
Record at Clemson	96-30 (3 <sup>rd</sup> season)
Overall Record	846-381-3 (21 <sup>st</sup> season)
Associate Head Coach	Kyle Jamieson (Brock '97 & Nipissing '98)
Assistant Coach	Courtney Breault (Nebraska '13, Clemson '21)
Volunteer Assistant Coach	Reese Jacobs (Georgia Southern '79)
Director of Operations	Jeannie Murphy (Oklahoma '10, Concordia '14)
Graduate Assistant	Alyssa Bilodeau (Jacksonville '21)
Athletic Trainer	Katie Rovtar (Toledo '06 & Virginia Tech '08)
Strength Coach	Ryan Metzger (Wisconsin-Oshkosh '11 & Kentucky '15)
Sport Administrator	Natalie G. Honnen (Florida '03 & '05)
First Year of Softball	2020
Season of Softball	Third

## ACC STANDINGS

SCHOOL	CONF	CPCT.	OVERALL	PCT.	STREAK
Virginia Tech	18-2	.900	36-6	.857	W5
Duke	16-3	.842	36-7	.837	W1
Florida State	16-5	.762	43-5	.896	W5
Notre Dame	13-5	.722	35-9	.795	W4
Virginia	12-9	.571	26-21	.553	W3
Georgia Tech	11-10	.524	35-12	.745	W7
Clemson	11-10	.524	33-14	.702	L3
Louisville	8-10	.444	24-20	.545	L3
NC State	7-14	.333	31-19	.620	L1
North Carolina	6-15	.286	23-25	.479	L3
Boston College	6-15	.286	20-23	.465	W1
Syracuse	4-15	.211	20-20	.500	L1
Pitt	2-17	.105	14-24	.368	L4

# 2022 TV ROSTER



**1**  
RACHEL GIBSON  
Fr. - RHP



**2**  
BROOKE McCUBBIN  
Fr. - RHP/INF



**3**  
SAM RUSS  
+Gr. - OF



**4**  
ABY VIEIRA  
Fr. - C/UTL



**5**  
ANSLEY HOUSTON  
So. - INF



**6**  
CARLEE SHANNON  
\*\*So. - OF



**7**  
MCKENZIE CLARK  
So. - OF



**8**  
GRACE HILLER  
Fr. - INF/OF



**9**  
SARAH HOWELL  
So. - C/UTL



**10**  
EMMA WHITFIELD  
\*So. - RHP



**11**  
HAYLEE WHITESIDES  
Fr. - RHP/INF



**12**  
CAMMY PEREIRA  
\*\*Gr. - INF/OF



**13**  
ABI STUART  
\*So. - C/UTL



**15**  
MADISON MAY  
\*So. - OF/INF



**16**  
ALIA LOGOLEO  
\*So. - OF/INF



**17**  
REGAN SPENCER  
So. - RHP



**18**  
BAILEY TAYLOR  
\*Gr. - INF



**19**  
JADEN CHEEK  
So. - INF/OF



**21**  
JADEYN RUSZKOWSKI  
Fr. - INF



**23**  
JoJo HYATT  
\*\*So. - C



**24**  
ARIELLE ODA  
\*\*So. - OF/INF



**25**  
MARISSA GUIMBARDA  
\*Gr. - UTL



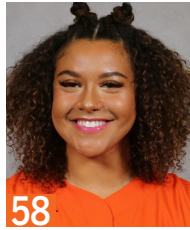
**27**  
GRACE MATTIMORE  
\*Gr. - C/UTL



**28**  
MADDIE MOORE  
Fr. - INF



**42**  
MORGAN JOHNSON  
\*So. - OF



**58**  
KYAH KELLER  
\*So. - INF



**72**  
VALERIE CAGLE  
\*So. - RHP/UTL



**77**  
HANNAH GOODWIN  
\*\*Fr. - INF



**87**  
MILLIE THOMPSON  
So. - LHP



**HC**  
JOHN RITTMAN  
3rd Season



**AC**  
KYLE JAMIESON  
3rd Season



**AC**  
COURTNEY BREAUT  
3rd Season



**VC**  
REESE JACOBS  
3rd Season



**GA**  
ALYSSA BIODEAU  
1st Season



**DO**  
JEANNIE MURPHY  
3rd Season

# PLAYER HIGHS

## #1 RACHEL GIBSON

Career (Last)	Category	2022
Same	IP	
Same	Runs Allowed	4 (Akron 2/26)
	Earned Runs	3 (Akron 2/26)
	Walks Issued	
	Strikeouts	
Same	Hits Allowed	1 (Akron 2/26)
	Doubles Allowed	
	Triples Allowed	
	Homers Allowed	

## #2 BROOKE McCUBBIN

Career (Last)	Category	2022
Same	IP	5.1 (vs Northwestern 2/19)
Same	Runs Allowed	7 (vs Northwestern 2/19)
Same	Earned Runs	5 (at Duke 3/20)
Same	Walks Issued	2, 5x (at Florida State 4/23)
Same	Strikeouts	5 (Winthrop 3/15)
Same	Hits Allowed	9 (vs Northwestern 2/19)
Same	Doubles Allowed	1, 5x (at Florida State 4/23)
	Triples Allowed	
Same	Homers Allowed	3 (at Pitt 4/10)

## #3 SAM RUSS

Career (Last)	Category	2022
Same	Runs	3 (at North Carolina 4/1)
Same	Hits	3 (vs LIU 2/12)
Same	RBI	2, 3x (at Pitt 4/10)
Same	Doubles	1, 6x (at Florida State 4/23)
Same	Triples	1, 4x (at Duke 3/19)
Same	Home Runs	1, 2x (at Duke 3/20)
Same	Walks	2, 4x (at North Carolina 4/3)
Same	HBP	2 (at North Carolina 4/2)
Same	Stolen Bases	2, 4x (Liberty 3/14)

## #4 ABY VIEIRA

Career (Last)	Category	2022
Same	Runs	2 (at Florida State 4/21)
Same	Hits	3 (at Florida State 4/21)
Same	RBI	4 (Akron 2/26)
Same	Doubles	2 (at Florida State 4/21)
	Triples	
	Home Runs	1, 4x (at Florida State 4/21)
Same	Walks	1, 2x (Akron 2/26)
	HBP	
	Stolen Bases	

## #5 ANSLEY HOUSTON

Career (Last)	Category	2022
Same	Runs	1, 9x (Notre Dame 4/16)
-	Hits	
-	RBI	
-	Doubles	
-	Triples	
-	Home Runs	
-	Walks	
-	HBP	
Same	Stolen Bases	1, 2x (Notre Dame 4/14)

## #6 CARLEE SHANNON

Career (Last)	Category	2022
1, 34x (at Pitt 4/10/22)	Runs	1, 11x (at Pitt 4/10)
-	Hits	
-	RBI	
-	Doubles	
-	Triples	
-	Home Runs	
-	Walks	
-	HBP	
2 (Winthrop 4/13/21)	Stolen Bases	1, 12x (Furman 4/6)

## #7 McKENZIE CLARK

Career (Last)	Category	2022
4 (at FGCU 2/10)	Runs	4 (at FGCU 2/10)
4 (Akron 2/26/22)	Hits	4 (Akron 2/26)
4 (at Florida State 4/22/22)	RBI	4 (at Florida State 4/22)
2, 3x (Mercer 3/9/22)	Doubles	2 (Mercer 3/9)
1, 8x (Virginia Tech 3/5/22)	Triples	1, 2x (Virginia Tech 3/5)
3 (at Florida State 4/22/22)	Home Runs	3 (at Florida State 4/22)
2, 5x (at North Carolina 4/3/22)	Walks	2, 3x (at North Carolina 4/3)
1, 12x (Notre Dame 4/14/22)	HBP	1, 7x (Notre Dame 4/14)
3 (Elon 2/27/21)	Stolen Bases	1, 6x (Furman 4/6)

## #8 GRACE HILLER

Career (Last)	Category	2022
	Runs	
	Hits	
	RBI	
	Doubles	
	Triples	
	Home Runs	
	Walks	
	HBP	
	Stolen Bases	

## #9 SARAH HOWELL

Career (Last)	Category	2022
1, 5x (North Carolina 4/3/21)	Runs	
1 (at North Florida 2/12/21)	Hits	
-	RBI	
-	Doubles	
-	Triples	
-	Home Runs	
-	Walks	
-	HBP	
2 (at Virginia 3/7/21)	Stolen Bases	

## #10 EMMA WHITFIELD

Career (Last)	Category	2022
5.0 (Charlotte 3/4/20)	IP	1.0 (Akron 2/26)
3 (vs St. John's 2/9/20)	Runs Allowed	1 (Akron 2/26)
3 (vs St. John's 2/9/20)	Earned Runs	1 (Akron 2/26)
3 (Pittsburgh 3/7/20)	Walks Issued	
3, 4x (Furman 3/13/21)	Strikeouts	1 (Akron 2/26)
5 (Charlotte 3/4/20)	Hits Allowed	2 (Akron 2/26)
2 (Maryland 2/15/20)	Doubles Allowed	
1 (Akron 2/26/22)	Triples Allowed	1 (Akron 2/26)
1, 5x (Winthrop 4/13/21)	Homers Allowed	

## #11 HAYLEE WHITESIDES

Career (Last)	Category	2022
	IP	
	Runs Allowed	
	Earned Runs	
	Walks Issued	
	Strikeouts	
	Hits Allowed	
	Doubles Allowed	
	Triples Allowed	
	Homers Allowed	

## #12 CAMMY PEREIRA

Career (Last)	Category	2022
3 (Maryland 2/15/20)	Runs	2, 4x (at Pitt 4/10)
3, 10x (at Duke 3/19/22)	Hits	3, 3x (at Duke 3/19)
3, 3x (at Pitt 4/10/22)	RBI	3, 2x (at Pitt 4/10)
1, 11x (Boston U 2/25/22)	Doubles	1, 5x (at North Carolina 4/3)
1, 3x (South Carolina 4/12/22)	Triples	1 (South Carolina 4/12)
2 (vs Georgia Tech 5/13/21)	Home Runs	1, 4x (at Pitt 4/10)
2 (Boston College 4/17/21)	Walks	1, 11x (at Florida State 4/23)
2, 2x (at North Carolina 4/2/22)	HBP	2 (at North Carolina 4/2)
1, 10x (Furman 4/6/22)	Stolen Bases	1 (Furman 4/6)

## #13 ABI STUART

Career (Last)	Category	2022
3 (vs St. John's 2/9/20)	Runs	1 (vs Kent State 2/11)
2, 6x (Boston College 4/16/21)	Hits	
3, 3x (Winthrop 4/13/21)	RBI	
2 (Furman 3/12/21)	Doubles	
-	Triples	
1, 5x (North Carolina 4/2/21)	Home Runs	
2 (Western Carolina 2/12/20)	Walks	1, 2x (Liberty 3/14)
1, 2x (Boston College 4/17/21)	HBP	
-	Stolen Bases	

## #15 MADSION MAY

Career (Last)	Category	2022
Same	Runs	1, 2x (vs Texas Tech 2/17)
Same	Hits	2 (vs Wisconsin 2/19)
Same	RBI	2 (vs Texas Tech 2/17)
Same	Doubles	1, 2x (at Charlotte 2/23)
-	Triples	
-	Home Runs	
Same	Walks	2, 2x (vs Tennessee 2/18)
Same	HBP	1 (vs Tennessee 2/18)
-	Stolen Bases	

# PLAYER HIGHS

## #16 ALIA LOGOLEO

CAREER (LAST)	CATEGORY	2022
4 (at Syracuse 5/9/21)	Runs	2, 4x (at Pitt 4/8)
4 (at Syracuse 5/9/21)	Hits	3, 2x (at North Carolina 4/1)
10 (at Syracuse 5/9/21)	RBI	8 (at North Carolina 4/1)
2, 2x (at Charlotte 2/23/22)	Doubles	2 (at Charlotte 2/23)
1, 2x (Morgan State 2/23/20)	Triples	
3 (at Syracuse 5/9/21)	Home Runs	2 (at North Carolina 4/1)
2, 3x (at Pitt 4/10/22)	Walks	2, 2x (at Pitt 4/10)
1, 8x (at North Carolina 4/3/22)	HBP	1, 3x (at North Carolina 4/3)
2 (vs Virginia Tech 5/14/21)	Stolen Bases	1, 2x (Louisville 3/27)

## #17 REGAN SPENCER

CAREER (LAST)	CATEGORY	2022
7.0, 2x (St. Francis 2/25/22)	IP	7.0 (St. Francis 2/25)
4 (at North Carolina 4/3/22)	Runs Allowed	4 (at North Carolina 4/3)
3 (Boston College 4/17/21)	Earned Runs	2, 3x (at North Carolina 4/3)
3, 3x (Liberty 3/13/22)	Walks Issued	3 (Liberty 3/13)
8 (at Louisville 3/20/21)	Strikeouts	7 (Louisville 3/27)
7, 2x (at Florida State 4/23/22)	Hits Allowed	7 (at Florida State 4/23)
2, 2x (at North Carolina 4/3/22)	Doubles Allowed	2 (at North Carolina 4/3)
-	Triples Allowed	
1, 4x (Liberty 3/13/22)	Homers Allowed	1 (Liberty 3/13)

## #18 BAILEY TAYLOR

CAREER (LAST)	CATEGORY	2022
3, 2x (Virginia 3/1/20)	Runs	1, 2x (at Pitt 4/10)
2, 6x (at Pitt 4/10/22)	Hits	2, 2x (at Pitt 4/10)
4 (Maryland 2/15/20)	RBI	2 (at Pitt 4/8)
1, 3x (at Pitt 4/8/22)	Doubles	1 (at Pitt 4/8)
-	Triples	
1, 3x (at Pitt 4/10/22)	Home Runs	1 (at Pitt 4/10)
2, 2x (at North Carolina 4/2/22)	Walks	2 (at North Carolina 4/2)
Same	HBP	2 (vs Kent State 2/11)
-	Stolen Bases	

## #19 JADEN CHEEK

CAREER (LAST)	CATEGORY	2022
1, 3x (Notre Dame 4/14/22)	Runs	1, 2x (Notre Dame 4/14)
1 (Furman 3/23/21)	Hits	
-	RBI	
-	Doubles	
-	Triples	
-	Home Runs	
-	Walks	
-	HBP	
1, 3x (Furman 4/6/22)	Stolen Bases	1 (Furman 4/6)

## #21 JADEYN RUSZKOWSKI

CAREER (LAST)	CATEGORY	2022
	Runs	
	Hits	
	RBI	
	Doubles	
	Triples	
	Home Runs	
	Walks	
	HBP	
	Stolen Bases	

## #23 JoJo HYATT

CAREER (LAST)	CATEGORY	2022
3 (Maryland 2/15/20)	Runs	1 (Mercer 3/9)
3 (at Syracuse 5/9/21)	Hits	2, 2x (at Duke 3/18)
3 (vs Texas Tech 2/17/22)	RBI	3 (vs Texas Tech 2/17)
1, 3x (at Syracuse 5/8/21)	Doubles	
1, 2x (vs Texas Tech 2/17/22)	Triples	1 (vs Texas Tech 2/17)
1 (at Virginia 3/7/21)	Home Runs	
2, 2x (Boston College 4/17/21)	Walks	1, 5x (at Duke 3/20)
1, 4x (at Duke 3/19/22)	HBP	1 (at Duke 3/19)
-	Stolen Bases	

## #24 ARIELLE ODA

CAREER (LAST)	CATEGORY	2022
2, 3x (Furman 4/6/22)	Runs	2 (Furman 4/6)
2 (at Florida State 4/22/22)	Hits	2 (at Florida State 4/22)
2, 2x (Furman 4/6/22)	RBI	2 (Furman 4/6)
1 (Boston U 2/25/22)	Doubles	1 (Boston U 2/25)
1 (Charlotte 3/4/20)	Triples	
1 (Furman 4/6/22)	Home Runs	1 (Furman 4/6)
1, 13x (at Florida State 4/23/22)	Walks	1, 6x (at Florida State 4/23)
1, 3x (Gardner-Webb 3/1/22)	HBP	1 (Boston U 2/25)
1, 10x (at Florida State 4/21/22)	Stolen Bases	1, 5x (at Florida State 4/21)

## #25 MARISSA GUIMBARDA

CAREER (LAST)	CATEGORY	2022
2, 9x (at North Carolina 4/3/22)	Runs	2, 4x (at North Carolina 4/3)
3, 5x (at North Carolina 4/3/22)	Hits	3 (at North Carolina 4/3)
5, 2x (at North Carolina 4/2/22)	RBI	5 (at North Carolina 4/2)
2, 2x (Liberty 3/13/22)	Doubles	2 (Liberty 3/13)
1 (Morgan State 2/23/20)	Triples	
2, 3x (at North Carolina 4/3/22)	Home Runs	2, 2x (at North Carolina 4/3)
3 (Virginia 2/28/20)	Walks	2, 7x (at Pitt 4/9)
3 (at Georgia Tech 2/21/21)	HBP	1, 5x (Notre Dame 4/16)
1, 2x (at Duke 3/18/22)	Stolen Bases	1 (at Duke 3/18)

## #27 GRACE MATTIMORE

CAREER (LAST)	CATEGORY	2022
2, 4x (North Carolina 4/2/21)	Runs	1 (Virginia Tech 3/6)
2, 9x (North Carolina 4/2/21)	Hits	1 (Virginia Tech 3/6)
4 (vs St. John's 2/9/20)	RBI	
2 (Charlotte 3/4/20)	Doubles	1 (Virginia Tech 3/6)
-	Triples	
1 (North Carolina 4/2/21)	Home Runs	
3, 2x (at Syracuse 5/8/21)	Walks	1, 2x (Furman 4/6)
2 (vs Illinois State 2/12/21)	HBP	
1 (vs Illinois State 2/12/21)	Stolen Bases	

## #28 MADDIE MOORE

CAREER (LAST)	CATEGORY	2022
Same	Runs	2, 3x (at Pitt 4/10)
Same	Hits	1, 13x (at Pitt 4/10)
Same	RBI	2 (Boston U 2/26)
Same	Doubles	1, 4x (at Pitt 4/8)
-	Triples	
Same	Home Runs	1, 2x (at North Carolina 4/2)
Same	Walks	2 (at North Carolina 4/3)
Same	HBP	1 (at North Carolina 4/1)
Same	Stolen Bases	1, 7x (South Carolina 4/12)

## #58 KYAH KELLER

CAREER (LAST)	CATEGORY	2022
3 (North Carolina 4/2/21)	Runs	1 (Mercer 3/9)
3 (North Carolina 4/2/21)	Hits	2 (at Duke 3/19)
4 (North Carolina 4/2/21)	RBI	2, 2x (Louisville 3/26)
1, 3x (Mercer 3/9/22)	Doubles	1 (Mercer 3/9)
1 (NC State 4/23/21)	Triples	
2 (North Carolina 4/2/21)	Home Runs	
1, 11x (Furman 4/6/22)	Walks	1, 5x (Furman 4/6)
1, 4x (South Carolina 3/30/22)	HBP	1, 2x (South Carolina 3/30)
-	Stolen Bases	

## #72 VALERIE CAGLE

CAREER (LAST)	CATEGORY	2022
3, 3x (vs Troy 5/21/21)	Runs	2, 6x (at Pitt 4/8)
4, 2x (Virginia 2/28/20)	Hits	3, 2x (at Charlotte 2/23)
8 (Maryland 2/15/20)	RBI	6 (at FGCU 2/10)
2 (Furman 3/13/21)	Doubles	1, 6x (Notre Dame 4/16)
1, 2x (at Florida State 4/22/22)	Triples	1 (at Florida State 4/22)
2, 7x (Winthrop 3/15/22)	Home Runs	2 (Winthrop 3/15)
3, 2x (Akron 2/26)	Walks	3 (Akron 2/26)
1 (vs Kent State 2/11)	HBP	1 (vs Kent State 2/11)
1, 5x (Winthrop 4/13/21)	Stolen Bases	
11.0 (at Louisville 3/19/21)	IP	9.0 (vs Tennessee 2/18)
10 (vs Duke 2/7/20)	Runs Allowed	6, 2x (at Duke 3/18)
10 (vs Duke 2/7/20)	Earned Runs	6, 2x (at Duke 3/18)
6 (vs Georgia Tech 5/13/21)	Walks Issued	3, 4x (Louisville 3/26)
14, 3x (vs Georgia Tech 5/13/21)	Strikeouts	13 (vs Tennessee 2/18)
10 (vs Duke 2/7/20)	Hits Allowed	9, 2x (Notre Dame 4/16)
3 (Virginia 2/28/20)	Doubles Allowed	1, 8x (at Florida State 4/21)
1, 3x (vs Tennessee 2/18/22)	Triples Allowed	1 (vs Tennessee 2/18)
2, 2x (vs Tennessee 2/18/22)	Homers Allowed	2, 2x (at Duke 3/18)

## #77 HANNAH GOODWIN

CAREER (LAST)	CATEGORY	2022
2, 3x (Pittsburgh 3/6/20)	Runs	
3, 2x (vs Stetson 2/22/20)	Hits	
4 (vs St. John's 2/7/20)	RBI	
1, 5x (Pittsburgh 3/6/20)	Doubles	
-	Triples	
1, 4x (Pres. College 3/10/20)	Home Runs	
2 (Michigan State 2/16/20)	Walks	
1, 4x (Georgia 2/26/20)	HBP	
1 (at UNCG 2/18/20)	Stolen Bases	

## #87 MILLIE THOMPSON

CAREER (LAST)	CATEGORY	2022
7.0, 5x (at North Carolina 4/2/22)	IP	7.0, 3x (at North Carolina 4/2)
5 (at Florida State 4/22/22)	Runs Allowed	5 (at Florida State 4/22)
4, 2x (at Florida State 4/22/22)	Earned Runs	4, 2x (at Florida State 4/22)
3, 5x (Louisville 3/25/22)	Walks Issued	3, 2x (Louisville 3/25)
11 (Illinois 3/13/22)	Strikeouts	11 (Illinois 3/13)
8, 5x (at Florida State 4/22/22)	Hits Allowed	8, 2x (at Florida State 4/22)
4 (Notre Dame 4/15/22)	Doubles Allowed	4 (Notre Dame 4/15)
-	Triples Allowed	
2 (at Pitt 4/9/22)	Homers Allowed	2 (at Pitt 4/9)