



# Boston College

## Women's Basketball

### 2021-22 SCHEDULE

Overall: 10-4  
ACC: 1-2

HOME: 8-1 AWAY: 2-3 NEUTRAL: 0-0

Date	Opponent	Time/Result
Nov. 9	Harvard (ACCNX)	W, 86-60
Nov. 13	Holy Cross (ACCNX)	W, 75-50
Nov. 17	at Boston University	L, 69-65
Nov. 20	at Providence	W, 85-73
Nov. 24	Northeastern (ACCNX)	W, 57-46
Nov. 28	Albany (ACCNX)	W, 77-65
Dec. 2	Penn State (ACCN)	W, 86-69
Dec. 5	at VCU	L, 69-65
Dec. 8	at UMass	W, 66-60
Dec. 11	New Hampshire (ACCN)	Canceled
Dec. 19	#20/25 North Carolina (ACCN)	L, 76-73
Dec. 21	Sacred Heart (ACCNX)	W, 97-68
Dec. 30	at #2/3 Louisville (ACCNX)	L, 79-49
Jan. 1	New Hampshire	W, 88-52
Jan. 6	Syracuse (ACCNX)	W, 95-71
Jan. 9	at Clemson (NESN)	12 p.m.
Jan. 13	at Pitt (ACCNX)	6 p.m.
Jan. 16	Louisville (ACCNX)	12 p.m.
Jan. 20	Notre Dame (NESN)	6 p.m.
Jan. 23	Miami (NESN)	2 p.m.
Jan. 27	at Georgia Tech (ACCNX)	7 p.m.
Jan. 30	at Notre Dame (ACCNX)	2 p.m.
Feb. 3	Virginia (ACCNX)	7 p.m.
Feb. 6	at Virginia Tech (NESN)	2 p.m.
Feb. 10	NC State (ACCNX)	8 p.m.
Feb. 15	Pitt (ACCNX)	7 p.m.
Feb. 17	at Florida State (ACCNX)	7 p.m.
Feb. 20	Wake Forest (ACCNX)	12 p.m.
Feb. 24	at Duke (NESN)	8 p.m.
Feb. 27	at Syracuse (ACCNX)	12 p.m.

**Bold** indicates home game

\* denotes ACC game

All times Eastern and subject to change

### BC Athletics Communications

Chase Colliton

E-mail: collitoc@bc.edu

Mobile: (828) 406-6466

All media credential requests must be submitted 24 hours prior to game time. Credentials for Boston College home games are issued to working media only and should be requested as early as possible due to space limitations and demand. Media credentials will be left at Media Will Call (Media Entrance) at Gate B of Conte Forum.

Media credentials are issued solely to the person identified on it. It may not be transferred or used by any other person. Acceptance of a media credential requires compliance with all Boston College rules and regulations applicable to the media credential. Any breach or failure to comply with these terms, conditions, rules and/or regulations may result in the cancellation and withdrawal of the media credential, including but not limited to expulsion from the athletics event for which it was issued, and denial of a media credential for any and all future athletics events. Joanna Bernabei-McNamee and select BC student-athletes will be available as soon as possible following games for both home and away events.

Game 15

### Boston College at Clemson

Date: Jan. 9 Time: 12 p.m. Location: Arena: Littlejohn Coliseum  
Watch: ACCNX | NESN Twitter: @BC\_WBB Live Stats: BCEagles.com

Location: Chesnut Hill, Mass.  
Enrollment: 14,513  
President: Rev. William P. Leahy, S.J.  
Director of Athletics: Patrick Kraft  
Head Coach: Joanna Bernabei-McNamee  
Fourth season at BC: 51-44 (.536)  
10th season overall: 176-110 (.615)

Location: Clemson, S.C.  
Enrollment: 23,406  
President: James Clements  
Director of Athletics: Graham Neff  
Head Coach: Amanda Butler  
Fourth season at CU: 46-58 (.442)  
16th season overall: 276-217 (.560)

### Eagles Crush Orange for First ACC Win

- Boston College earned its first ACC victory of the season following a 95-71 triumph over Syracuse.
- The Eagles posted at least 95 points for the second time this season and hit a season-high 11 3-pointers.
- Four players scored in double figures led by Maria Gakdeng's career-high 21 points on 9-of-12 shooting and tied a personal high with nine rebounds.
- Marnelle Garraud hit five of her six shots from beyond the arc en route to 17 points, while Makayla Dickens came off the bench to score 15 points and dish out seven helpers.
- BC is aiming for its first 2-0 week in ACC play this afternoon against Clemson.

### About the Eagles ...

- Boston College enters year four of the Joanna Bernabei-McNamee era as the Eagles are coming off an unconventional 2020-21 campaign due to COVID-19.
- The Eagles bring back all five starters and 100 percent of their numbers across the board, including the trio of Taylor Soule (15.7 ppg), Cameron Swartz (13.4 ppg), and Makayla Dickens (12.6 ppg). The seniors combined to score 41.7 points per game.
- BC also returns the likes of All-ACC Defensive performer Marnelle Garraud, and Clara Ford.

### Inside the Clemson Series...

- Boston College is 12-6 all-time against the Tigers, with the last matchup in the 2019-20 ACC Tournament, resulting in an 85-73 victory for the Eagles.

### What's Next

- BC will face Pitt on Thursday at 6 p.m. in a road showdown.

### The 2021-22 Boston College Eagles | #ForBoston | #TogetherAsOne

No.	Name	Cl.	Pos.	Ht.	PPG	RPG	Notes
0	Dontavia Waggoner	So.	G	6-0	2.7	2.3	Grabbed a personal-high 9 rebs. vs. 'Cuse
1	Cameron Swartz	Sr.	G	5-11	11.8	3.7	Scored at least 20 points in three games
2	Kaylah Ivey	So.	G	5-8	1.9	1.5	Second on the team averaging 2.8 apg
3	Jaelyn Batts	Jr.	G/F	6-0	4.1	3.7	Recorded a dbl-dbl versus Penn State
4	JoJo Lacey	So.	G/F	6-1	2.3	1.1	Scored five points in the first two games
5	Maria Gakdeng	Fr.	F/C	6-3	9.6	5.7	Leading the team in rebounding and blks.
10	Makayla Dickens	Sr.	G	5-8	9.7	2.9	Leads the reserves in scoring
12	Ally VanTimmeren	Fr.	F	6-2	5.8	3.2	Shooting 54 percent from the field
13	Taylor Soule	Sr.	F	5-11	15.8	4.6	Leads the team in scoring
14	Marnelle Garraud	Sr.	G	5-7	9.9	4.0	Leading the team in asts and stls
21	Andrea Daley	Fr.	G	6-0	2.0	1.8	Blocked 3 shots against Holy Cross
32	Clara Ford	Sr.	C	6-3	2.6	1.4	Scored 10 points against Sacred Heart



## Women's Basketball

### 2021-22 Numerical Roster

No.	Name	Cl.	Pos.	Ht.	Hometown   High School   Previous School
0	Dontavia Waggoner	So.	G	6-0	Nashville, Tenn.   The Ensworth School
1	Cameron Swartz	Sr.	G	5-11	Marietta, Ga.   Fellowship Christian   Colorado
2	Kaylah Ivey	So.	G	5-8	Forestville, Md.   Riverdale Baptist School
3	Jaelyn Batts	Jr.	F	6-0	South Riding, Va.   Freedom
4	JoJo Lacey	So.	G/F	6-1	Douglassville, Pa.   Westtown School
5	Maria Gakdeng	Fr.	F/C	6-3	Lanham, Md.   New Hope Academy
10	Makayla Dickens	Sr.	G	5-8	Virginia Beach, Va.   Princess Anne
11	Amaria Fields	Fr.	G	5-11	McKinney, Texas   McKinney North
12	Ally VanTimmeren	Fr.	F	6-2	Allendale, Mich.   Jenison
13	Taylor Soule	Sr.	F	5-11	W. Lebanon, N.H.   Kimball Union Academy
14	Marnelle Garraud	Sr.	G	5-7	Lynn, Mass.   Nobles & Greenough
21	Andrea Daley	Fr.	G	6-0	Miami, Fla.   Miami Country Day
32	Clara Ford	Sr.	F	6-3	Vienna, Va.   George C. Marshall
44	Akunna Konkwo	R.-So.	C	6-2	Alexandria, Va.   Bishop Ireton

**Head Coach:** Joanna Bernabei-McNamee

**Assistant Coach:** AJ Cohen

**Assistant Coach:** George Porcha

**Assistant Coach:** Lindsay Wisdom-Hylton

### Pronunciation Guide

Cameron Swartz	.....	Cam-er-in Swartz (Rhymes with Shorts)
Kaylah Ivey	.....	Kay-luh Eye-vee
Jaelyn Batts	.....	JAY-lin Batts
Ally VanTimmeren	.....	VAN-Tim-Er-In
Maria Gakdeng	.....	Gak (rhymes with hack)-dang
Amaria Fields	.....	Uh-Mar-E-Uh
Andrea Daley	.....	On-Dray-Uh
Taylor Soule	.....	Taylor Soul
Marnelle Garraud	.....	Mar-nell Juh-ROD
Clara Ford	.....	Clar-uh Ford
Joanna Bernabei-McNamee	.....	Bern-a-bee Mac-Na-mee
George Porcha	.....	Por-shay

### BREAKDOWN

#### BY STATE

**Tennessee (1)**  
Dontavia Waggoner

**Georgia (1)**  
Cameron Swartz

**Maryland (1)**  
Kaylah Ivey  
Maria Gakdeng

**Virginia (1)**  
Jaelyn Batts  
Makayla Dickens  
Clara Ford  
Akunna Konkwo

**Texas (1)**  
Amaria Fields

**Michigan (1)**  
Ally VanTimmeren

**New Hampshire (1)**  
Taylor Soule

**Massachusetts (1)**  
Marnelle Garraud

**Florida (1)**  
Andrea Daley

### BREAKDOWN

#### BY CLASS

**Seniors (5)**  
Cameron Swartz  
Makayla Dickens  
Marnelle Garraud  
Taylor Soule  
Clara Ford

**Juniors (1)**  
Jaelyn Batts

**Sophomores (4)**  
Akunna Konkwo  
JoJo Lacey  
Dontavia Waggoner  
Kaylah Ivey

**Freshmen (4)**  
Amaria Fields  
Andrea Daley  
Maria Gakdeng  
Ally VanTimmeren

### Head Coach

## Joanna Bernabei-McNamee



#### The Bernabei-McNamee File

Hometown..... Weirton, W. Va.  
College ..... West Liberty ('97), Eastern Kentucky ('99)  
Playing Career.....West Liberty (1994-97)

#### Coaching History

2018-present..... Boston College, Head Coach  
2016-18..... Albany, Head Coach  
2013-16.....Pikeville, Head Coach  
2008-09 ..... West Virginia, Assistant Coach  
2003-07 ..... Maryland, Assistant Coach  
2001-03..... West Virginia, Assistant Coach  
1999-01 ..... Eastern Kentucky, Assistant Coach  
1998-99 ..... West Virginia Wesleyan, Head Coach  
1997-98..... Eastern Kentucky, Graduate Assistant

#### Coach Mac Year-By-Year

Year	School	Record	Conf.	Postseason
2021-22	BC	10-4	1-2	
2020-21	BC	7-12	2-11	
2019-20	BC	20-12	11-7*	
2018-19	BC	14-16	3-13	
2017-18	Albany	24-8	12-4	WNIT
2016-17	Albany	21-12	12-4	NCAA
2015-16	Pikeville	26-9	7-7	NAIA Final Four
2014-15	Pikeville	23-9	8-6	
2013-14	Pikeville	14-18	7-11	
1998-99	WV Wes.	18-10		

**Overall** 176-110

**at BC** 51-44

\* tied 4th in the ACC, new program record | Most ACC regular season wins in program history

During the 2020-21 campaign, Taylor Soule was named to the All-ACC first-team while Marnelle Garraud collected All-ACC Defensive team honors.

Joanna Bernabei-McNamee became the eighth women's basketball coach in Boston College program history on April 11, 2018.

In 2019-20, her second season at BC, Bernabei-McNamee was named the Coach of the Year in the Atlantic Coast Conference. She led BC to an impressive 20-12 overall record and a fourth place finish in the conference with an 11-7 record.

The 20 victories were the most in program history since the 2010-11 season. The team also set a new program record for the most ACC victories with 11.

With Bernabei-McNamee at the helm, senior forward Emma Guy flourished as she led the ACC in field goal percentage throughout the season and finished 10th in



## Game Notes

# 5

## THINGS TO WATCH

- See if Taylor Soule can get back to her scoring ways after scoring nine against Syracuse. The senior is averaging 21.0 points, 5.0 rebounds, shooting 70 percent from the field and 93.3 percent from the line coming off games in which she scored single digits (two games).

- Watch if the Eagles continue to push the tempo, where they are 6-2 when the pace is 75 or above. The Tigers are 1-6 this season when the pace of play is at 75 or higher.

- See if Boston College can force Clemson into mistakes, as the Tigers are 1-7 when they commit 17 or more turnovers.

- Watch if BC can build off its season-high 11 3-pointers against Syracuse. The Tigers are 2-6 when they allow eight or more trifectas.

- See if the Eagles can keep Clemson off the offensive glass. Clemson averages 15.4 offensive rebounds per game this season while recording 16.1 offensive rebounds in its six wins.

### CLEMSON (12-6)

H- 6-2; A- 5-2; N- 1-1

12/28/96	L	N	52-55 ^^
2/05/06	W	A	70-53
1/21/07	W	H	69-64
1/28/08	W	A	68-63
1/23/09	W	H	71-51
1/29/10	L	A	65-68
2/6/11	W	H	78-49
2/16/12	W	H	56-53
01/13/13	W	A	66-43
02/24/13	L	H	61-64
2/20/14	L	A	67-72
2/5/15	W	H	68-53
2/18/16	W	A	67-64
1/2/17	W	H	60-48
1/18/18	L	A	61-65 (2OT)
2/16/19	L	H	58-91
2/9/20	W	A	70-68
3/5/20	W	N	85-73 ++

++ ACC Tournament ^^ Dartmouth Invitational

## STATS COMPARISON

### Tale of the Tape

STAT (2021-22)	BC	CLEM
Overall Record	10-4	6-8
Conf. Record	1-2	0-3
Field Goals Made	406	330
Field Goals Att.	834	873
Field Goal %	.487	.378
3-Point FG Made	83	57
3-Point FG Att.	253	232
3-Point FG %	.328	.246
FTs Made	169	159
FTs Att.	246	239
Free Throw %	.687	.665
Total Rebounds	529	571
Reb. Avg.	37.8	40.8
Reb. Margin	+5.1	+2.6
Assists Per Gm	18.1	9.9
Turnovers Per Gm	19.1	17.9
Ast./Tover Ratio	0.9	0.6
Turnover Margin	-0.2	0.4
Blocks Per Game	3.8	4.1
Steals Per Game	9.4	9.3
Total Points	1064	876
Points Per Game	76.0	62.6
Win/Loss Streak	W2	L4

## SERIES HISTORY

### Boston College leads 12-6

In Chestnut Hill: Boston College leads 6-2

In Clemson: Boston College leads 5-2

Neutral: Series tied 1-1

### PREVIOUS MEETING

Boston College 85, Clemson 73

(March 4, 2020 | Greensboro, N.C. | ACC Tournament)

## SCOUTING CLEMSON

- Clemson is on a four-game skid following an 81-62 loss to North Carolina on Saturday, Jan. 2

- Delicia Washington scored a team-high 16 points on 8-of-13 shooting. She also grabbed seven rebounds and dished out three assists.

- Washington leads the team in scoring at a clip of 12.8 ppg on 45.5 percent shooting from the field.

- Her 7.4 rebounds per game and 2.7 assists are both team bests.

- The Tigers are 19th in the nation in offensive rebounds per game at 15.4.

- All six of Clemson's wins have come at home, boasting a 6-3 mark.

## Boston College

Location	Chestnut Hill, Mass.
Founded	1863
Nickname	Eagles
Colors	Maroon and Gold
Enrollment	14,600
President	Rev. William P. Leahy, S.J.
Director of Athletics	Patrick Kraft
Conference	Atlantic Coast Conference
Facility	Silvio O. Conte Forum
Capacity	8,606
Ticket Office Phone	617-552-4622
Email	tickets@bc.edu

## BC Women's Basketball

Head Coach	Joanna Bernabei-McNamee
Alma Mater	West Liberty '97   Eastern Kentucky '99
Record at Boston College	50-44
Twitter	@CoachMcNamee
Assistant Coaches	
AJ Cohen	
Twitter	@CoachAJCohen
George Porcha	
Twitter	@CoachPorcha
Lindsay Wisdom-Hylton	
Twitter	@Wisdom14_
Director of Operations	Michael P. Gibson

## Communications

Assoc. Director/WBB Contact	Chase Colliton
Office Phone	617-552-0524
Cell Phone	828-406-6466
Email	collitoc@bc.edu
Athletics Website	BCEagles.com



## Women's Basketball

### By the Numbers

# 4

Maria Gakdeng is one of four freshmen in the nation to post at least 20 points, nine rebounds, and shoot 75 percent in a game.

# 14

BC is 4-0 this season when it grabs 14 or more offensive rebounds.

# 30

The Eagles are 5-0 this season when the bench scores at least 30 points.

# 75

Boston College is 8-0 this season when scoring 75 or more points.

# 101.4

The 101.4 points per 100 possession is the highest in the Bernabei-McNamee era.

#### A Boston College Win Would

- Improve the Eagles' record to 11-4.
- Put the Eagles back to .500 in league action.
- Give BC a 13-6 record against Clemson.
- Give the Eagles their first ACC win on the road.

#### A Boston College Loss Would

- Give the Eagles a 10-5 record.
- Fall to 1-2 in league action.

#### Depth Across the Board

- The Eagles bring back 100 percent of their numbers across the board.
- BC is one of five teams in the ACC to return at least three players who averaged double figures in scoring.
- Of those returning, all five starters are back, including the trio of Taylor Soule, Cameron Swartz and Makayla Dickens.
- The trio averaged a combined 41.7 points and 15.7 rebounds per game.
- All-ACC defensive performer, Marnelle Garraud and starter Clara Ford are also back.
- Garraud led the team and finished first in the ACC in steals (2.1), while leading the team in assists and blocked shots.
- The Eagles also have some youth with nine freshmen and sophomores.
- Dontavia Waggoner is in her first year with BC after transferring from NC State.
- Ally VanTimmeren both enrolled in school early last season and were able to get some playing experience.

#### Closer Look: Backcourt

- The Eagles boast a sharpshooting roster that averaged 7 3-pointers per game and drained at least 10 trifectas in four contests.
- Dickens (54 3's), Swartz (30's) and Garraud (28 3's) led the attack outside the arc, while Swartz finished second on the team in scoring and Dickens, third.
- Garraud stuffed the stat sheet, averaging 7.3 points, 3.1 assists, 2.1 steals and finished third on the team in treys made.
- Swartz ended the season on a high note, averaging 15.8 points over the last four games, highlighte by a career-high 33 points in the ACC Tournament against Pitt.

• Dickens' scoring came on strong in the last half of the season, hitting double figures in 10 of the final 11 games of the season.

• Waggoner saw limited action at NC State, averaging 7.4 minutes in 16 games, but brings defensive versatility to the table.

• Kaylah Ivey is back for her sophomore season after playing in 18 of 19 contests and chipping in 3.6 points per game. Ivey's best performance came in a 23-point outing against UMass Lowell last season.

#### Closer Look: Frontcourt

- Leading the frontcourt is one of the 20 members that made the Cheryl Miller Award Watch List in Taylor Soule.
- Soule led the team in points, averaging a career-high 15.7 points per game and 7.0 rebounds.
- The senior was one of two players in the ACC and one of 35 players in the country to average at least 15.5 points, 7.0 rebounds, 1.5 assists, and 1.0 steals per game, according to Her Hoop Stats.

• Clara Ford has been the staple down low for the Eagles. Ford started a career-high 17 games last season, while she also averaged 17.6 minutes. Ford tallied personal highs in scoring (5.0 ppg) and rebounding (5.6 rpg).

• Ally VanTimmeren also enrolled early, playing in 10 games with one start. The freshman scored in double figures in two of her first four appearances, including a personal-high 17 points at Louisville.

• Jaelyn Batts and Jojo Lacey bring added depth as well. Lacey played in seven games last season, while Batts put forth two games in double figures.

#### Newcomers

- Amaria Fields, Maria Gakdeng, Andrea Daley and Waggoner make up the group of newcomers.
- The trio of freshmen in Fields, Gakdeng and Daley were nationally ranked on numerous recruiting sites.
- Fields is a 5'11 freshman from Texas that was rated the No. 44 prospect at her position according to the Dan Olson Collegiate Report.

• From Maryland, Gakdeng was rated 76th nationally and 18th at her position according to Blue Star Basketball.



## Game Notes

### Three's Company

• The trio of Soule, Swartz, and Dickens are back as one of the most dangerous scoring trios in the league.

• Soule (15.7 ppg), Swartz (13.4 ppg), and Dickens (12.6 ppg) combined to score 41.7 points per game, which was 61 percent of the team's scoring output.

• Of the top trios in the ACC, the Boston College trio is tied with NC State for second in highest returning trio in scoring.

• The scoring trio of Elizabeth Kitley, Aisha Sheppard, and Georgia Aramore of Virginia Tech averaged 47.7 ppg.

### Top Scoring Trios

Player	School	PPG
Kitley/Sheppard/Aramore	Virginia Tech	47.7
Soule/Swartz/Dickens	Boston College	41.7
Cunane/Brown-Turner/Jones	NC State	41.7
Jackson/Jones/Weber	Florida State	38.7
Goodchild/De Jesus/Williams	Duke	38.3

### Spreading the Wealth

• The Eagles assisted on 72.6 of their field goals (45/62) through the first two games while assisting on 69.2 percent of their field goals in their eight wins.

• BC assisted on 75.9 percent of its field goals against Holy Cross, which was the third-highest assisted shot rate in the Bernabei-McNamee era.

• Since the 2018-19 season, the Eagles are 9-3 when assisting on at least 70 percent of their field goals and 27-11 when assisting at least on 60 percent of made baskets.

• Four players are averaging at least two assists per game, while Marnelle Garraud (4.0 apg) is leading the team.

• Kaylah Ivey is second in assists per game, averaging 2.8. She is 40th in the nation coming off the bench in assists per game.

• In the Eagles' three losses, they assisted on only 49 of their 95 baskets.

### SPREADING THE WEALTH Since 2018-19 (% of FGs assisted on)

	>60.0	<60.0
W-L	27-11	24-33
Points Per Game	78.2	70.2
Points Per 100 poss.	107.7	93.1

### SPREADING THE WEALTH (% of FGs assisted on) - This season

	Won	Lost
W-L	10-0	0-4
Assists Per Game	20.4	12.3
Assists/FG	171/311	49/95
Points Per Game	81.2	63.0
Points Per 100 poss.	107.5	84.6

### Bench Mob

• The Eagles' bench has been stellar this season, averaging 23.8 points per game.

• Over the last two games, the reserves are averaging 38 points and outscoring the opponents' bench by a combined 50 points.

• BC's unit scored 37 points against Syracuse on 15-of-25 shooting.

• Makayla Dickens scored 15 points while dishing out a season-high seven assists.

• Dontavia Waggoner scored a season-high nine points and grabbed a personal-high nine rebounds.

• Waggoner is turning in 8.0 points and 7.0 rebounds over the last two games. She is averaging just 2.7 points and 2.3 rebounds for the season.

• Clara Ford has also picked up her play, averaging 5.5 points and 2.3 rebounds over the last four games.

### The Last Time ...

#### INDIVIDUAL PLAYERS

Scored 20+ points .....21, Maria Gakdeng vs. Syracuse, 1.6.22

Scored 30+ points ..... 33, Cameron Swartz vs. Pitt, 3.3.21

Scored 35+ points ..... 39, Sarah Behn, Georgetown, 1.13.93

Made 8+ 3's in a game ..... 8, Nicole Boudreau, vs. UNC, 2.7.16

Made 5-7 3's in a game ... 5, Marnelle Garraud, vs. Syracuse, 1.6.22

Made 10+ free throws .....

Made 15+ free throws ..... 15, Cameron Swartz vs. Pitt, 3.3.21

10+ rebounds in a game ..... 12, Jaelyn Batts, Penn State, 12.2.21

15+ rebounds in a game 16, Taylor Soule, Delaware St., 12.20.19.....

.....16, Makayla Dickens, at Wake Forest, 1.10.19

20+ rebounds in a game .....21, Carolyn Swords, NC State, 1.29.09

Double-Double ..... 16pts-12 rebs. Jaelyn Batts vs. PSU, 12.2.22

10+ assists .....10, Marnelle Garraud, vs. VCU, 11.24.19

5+ Steals ..... 5, Dontavia Waggoner vs. New Hampshire, 1.1.22

5+ Blocks ..... 5, Georgia Pineau, vs. Fairfield, 12.3.17

#### TEAM

Won in OT ..... W, 92-90, vs. UMass, 11.29.20

Lost in OT ..... L, 65-61, at Clemson, 1.18.18

Played 2 OT ..... W, 92-90 vs. Duke, 1.31.19

..... L, 65-61, at Clemson, 1.18.18

Defeated Top 10 (AP) Opp ..... 67-60, vs. No. 8 FSU, 3.5.10

Def. Ranked AP Opp ..... 65-56 W at No. 14 Florida State, 1.30.20

..... 60-56, W vs. #13/15 Duke, 1.22.15

Won by 20-29 points ..... 97-68, W vs. Sacred Heart, 12.21.21

Won by 20-30 (ACC) opp. .... 95-71, vs. Syracuse, 1.6.22

Won by 30+ points ..... 88-52, vs. New Hampshire, 1.1.22

Scored 100 points .....109-69, W vs. Delaware St., 12.20.19

.....106-69, W vs. St. Francis, 11.10.19

..... 112-61 W vs. Rider, 11.25.18

.....113-104 W (20T) vs. Penn St. 12.2.10

Scored 90+ points .....97 vs. Sacred Heart, 12.21.21

..... 95 vs. Syracuse, 1.6.22

Scored +55 in a half ..... W 55, vs. New Hampshire, 1.1.22



## Women's Basketball

### Specialty Stats (BC/OPP)

	Paint	Off TO	2nd Ch.	Fast Break
HARVARD	48/16	21/11	6/11	21/15
HC	40/26	34/17	21/9	16/2
BU	40/30	18/15	5/5	13/8
PROVIDENCE	34/30	19/15	16/13	7/2
NU	36/22	15/13	9/8	13/11
ALBANY	42/24	26/24	10/10	15/8
PENN STATE	32/32	21/21	15/15	7/7
VCU	28/36	21/29	7/6	15/11
UMASS	32/30	7/17	12/15	15/16
UNH	-	-	-	-
UNC	28/26	9/29	16/4	13/13
SHU	60/26	19/21	10/7	21/11
UL	24/40	6/19	12/12	2/9
UNH	54/18	30/6	17/9	20/4
'CUSE	50/32	16/21	17/12	13/16
CLEMSON				
PITT				
UL				
ND				
MIAMI				
GT				
ND				
UVA				
VT				
NCSU				
FSU				
WF				
DUKE				
'CUSE				

### Scoring Breakdown (BC/OPP)

	Bench	1st half	2nd half	Largest Lead
HARVARD	32/15	44/29	42/31	26
HOLY CROSS	28/13	38/27	37/23	25
BU	16/17	24/24	41/45	9
PROVIDENCE	21/18	27/31	58/42	12
NU	12/13	28/25	29/21	11
ALBANY	39/18	41/31	36/34	12
PENN STATE	15/16	37/32	49/37	23
VCU	20/11	25/24	40/45	2
UMASS	14/2	33/29	33/31	18
UNH	-	-	-	-
UNC	10/18	41/33	32/43	15
SHU	34/32	51/32	46/36	29
UL	16/34	24/35	25/44	1
UNH	39/9	55/26	33/26	43
'CUSE	37/17	49/33	46/38	28
CLEMSON				
PITT				
UL				
ND				
MIAMI				
GT				
ND				
UVA				
VT				
NCSU				
FSU				
WF				
DUKE				
'CUSE				

### 2021-22 Stats Leaders



**TAYLOR SOULE**

POINTS	G	PTS	AVG
Taylor Soule	14	221	15.8
Cameron Swartz	14	165	11.8
Marnelle Garraud	14	138	9.9
Makayla Dickens	14	136	9.7



**MARIA GAKDENG**

REBOUNDS	G	REB	AVG
Maria Gakdeng	14	80	5.7
Taylor Soule	14	65	4.6
Jaelyn Batts	14	53	3.7
Cameron Swartz	14	52	3.7



**MARNELLE GARRAUD**

STEALS	G	STL	AVG
Marnelle Garraud	14	34	2.4
Dontavia Waggoner	12	14	1.2
Cameron Swartz	14	14	1.0
Jaelyn Batts	14	13	0.9



**MARNELLE GARRAUD**

ASSISTS	G	AST	AVG
Marnelle Garraud	14	56	4.0
Kaylah Ivey	13	36	2.8
Makayla Dickens	14	36	2.6
Jaelyn Batts	14	30	2.1

### Eagles' Record When

Stat	2021-22	Under Mac
Overall	10-4	51-44
at Home	8-1	32-18
on the Road	2-3	13-22
at Neutral Sites	0-0	6-4
Overall vs. Conference	1-2	17-33
In Overtime	0-0	2-0
1-5 Pt. Margin	0-3	6-9
6-10 Pt. Margin	1-0	20-8
11 or more points	9-1	35-27
Leading at the Half	9-2	44-9
Trailing at the Half	1-1	4-34
Tied at the Half	0-1	3-1
Shooting 40% or better	10-3	41-20
Shooting 40% or less	0-1	9-24
Shoots better than opp.	10-2	44-9
Shoots worse than opp.	0-2	7-35
Opp. Shoots 40% or Better	5-3	10-32
Opp. Shoots 40% or Less	5-1	41-12
Outrebound Opponent	8-2	41-9
Opponent Outrebound	2-2	9-34
Rebounds are tied	0-0	1-1
Shoots 70% or Better FT	5-2	28-24
Shoots 70% or Worst FT	5-2	23-20
Shoots more FT than Opp.	6-2	32-15
Opp. Shoots more FT	4-2	17-28
Same FT as Opponent	0-0	2-1
Shoots 40% or Better 3FG	2-1	19-10
Shoots Less than 40% 3FG	8-3	32-34
More Turnovers than Opp.	3-4	19-25
Less Turnovers than Opp.	7-0	27-15
Turnovers are tied	0-0	5-4
Scores less than 50 pts.	0-1	1-5
Scores 50-59 pts.	1-0	5-7
Scores 60-69 pts.	1-2	8-15
Scores 70-79 pts.	1-1	10-15
Scores more than 80 pts.	7-0	26-2
On Mondays	0-0	0-0
On Tuesdays	2-0	3-2
On Wednesdays	2-1	5-7
On Thursdays	2-1	15-14
On Fridays	0-0	3-0
On Saturdays	3-0	5-2
On Sundays	1-2	20-19
In November	5-1	18-5
In December	3-2	12-9
In January	2-0	10-12
In February	0-0	7-13
In March	0-0	4-4
Current Streak		Won 2
Home Court Streak		Won 3
Home Court Conference Streak		Won 1
Road Court Streak		Win 1
Road Court Conference Streak		Loss 2
Neutral Court Streak		Loss 1



## Game Notes

### ACC PRESEASON COACHES' POLL

Team (1st-place votes)	Points
1. NC State (14)	224
2. Louisville (1)	207
3. Georgia Tech	192
4. Virginia Tech	172
5. Florida State	152
6. Notre Dame	149
7. North Carolina	127
8. Duke	125
9. Miami	92
10. Clemson	83
11. Boston College	78
12. Syracuse	60
13. Wake Forest	59
14. Pitt	47
15. Virginia	33

### BLUE RIBBON ORDER OF FINISH

Team (1st-place votes)	Points
1. NC State (50)	847
2. Louisville (7)	789
3. Georgia Tech	691
4. Virginia Tech	644
5. Florida State	607
6. Notre Dame	580
7. North Carolina	488
8. Duke	464
9. Miami	355
10. Clemson	324
11. Boston College	297
12. Wake Forest	250
13. Syracuse	227
14. Pitt	160
15. Virginia	117

### 2021-22 PRESEASON ALL-ACC TEAM (HEAD COACHES)

Name	School	Pos	Year
Elissa Cunane	NC State	C	Sr.

Name	School	Pos	Year
Taylor Soule	Boston College	F	Sr.
Delicia Washington	Clemson	G	Gr.
Lorela Cubaj	Georgia Tech	F	Sr.
Lotta-Maj Lahtinen	Georgia Tech	G	Sr.
Hailey Van Lith	Louisville	G	So.
Jakia Brown-Turner	NC State	G	Jr.
Elissa Cunane	NC State	C	Sr.
Maddy Westbeld	Notre Dame	F	So.
Elizabeth Kitley	Virginia Tech	C	Jr.
Aisha Sheppard	Virginia Tech	G	Gr.

### 2021-22 PRESEASON ALL-ACC TEAM (BLUE RIBBON PANEL)

Name	School	Pos	Year
Taylor Soule	Boston College	F	Sr.
Delicia Washington	Clemson	G	Gr.
Lorela Cubaj	Georgia Tech	F	Sr.
Lotta-Maj Lahtinen	Georgia Tech	G	Sr.
Hailey Van Lith	Louisville	G	So.
Jakia Brown-Turner	NC State	G	Jr.
Elissa Cunane	NC State	C	Sr.
Maddy Westbeld	Notre Dame	F	So.
Elizabeth Kitley	Virginia Tech	C	Jr.
Aisha Sheppard	Virginia Tech	G	Gr.

### ASSOCIATED PRESS TOP 25 POLL (Jan. 3)

Team (1st-place votes)	Record	Pts.	Prev.
1. South Carolina (22)	13-1	737	-
2. Stanford	9-3	694	-
3. Louisville (5)	12-1	691	-
4. Arizona (3)	10-0	660	-
5. NC State	12-2	636	-
6. Indiana	11-2	578	8
7. Tennessee	13-1	571	-
8. Michigan	12-1	540	9
9. Texas	10-1	483	12
10. Maryland	10-4	478	6
11. UConn	6-3	462	-
12. Iowa State	12-1	429	14
13. LSU	14-1	365	19
14. Baylor	10-3	355	10
15. Georgia	12-2	318	13
16. Georgia Tech	10-3	287	-
17. Duke	10-2	232	15
18. BYU	10-1	183	-
19. North Carolina	13-0	162	24
20. Notre Dame	11-3	130	17
21. Kentucky	7-3	122	20
22. Iowa	7-3	119	21
23. Oklahoma	12-1	118	NR
24. South Florida	10-4	92	22
25. Texas A&M	10-3	58	23

**Others receiving votes:** Missouri 53, Colorado 53, Florida Gulf Coast 46, Kansas State 27, Ohio State 24, DePaul 19, Missouri State 10, Ole Miss 7, Virginia Tech 6

Boston College Opponents in **Bold**

### 2021-22 ACC STANDINGS

Team	ACC		Overall	
	W	L	W	L
NC State	4	0	13	2
Louisville	3	0	13	1
Virginia Tech	3	0	11	3
North Carolina	3	1	13	1
Notre Dame	2	1	11	3
Wake Forest	2	2	12	3
Duke	1	1	10	2
Georgia Tech	1	1	10	3
Boston College	1	2	10	4
Syracuse	1	3	8	6
Miami	0	1	7	4
Virginia	0	1	3	8
Florida State	0	2	6	6
Pitt	0	3	9	5
Clemson	0	3	6	8

### USA TODAY TOP 25 COACHES POLL (Jan. 4)

Team (1st-place votes)	Record	Pts.	Prev.
1. South Carolina (16)	13-1	775	-
2. Louisville (14)	12-1	773	-
3. Stanford (1)	9-3	738	-
4. NC State	12-2	695	-
5. Arizona (1)	10-0	660	-
6. Indiana	11-2	633	-
7. Michigan	12-1	599	-
8. Tennessee	13-1	568	9
9. Maryland	10-4	491	8
10. Texas	10-1	491	13
11. UConn	6-3	481	-
12. Iowa State	12-1	447	14
13. Baylor	10-3	403	10
14. Georgia	12-2	380	12
15. North Carolina	13-0	305	18
16. LSU	14-1	271	24
17. Georgia Tech	10-3	268	16
18. BYU	10-1	237	19
19. Notre Dame	11-3	224	15
20. Kentucky	7-3	185	-
21. Iowa	7-3	139	-
22. Duke	10-2	130	-
23. Texas A&M	10-3	126	17
24. South Florida	10-4	86	23
25. Oklahoma	12-1	69	NR

**Others receiving votes:** Florida Gulf Coast 68, Colorado 56, Ohio State 31, Nebraska 20, UCF 10, Missouri 8, Kansas State 4, Gonzaga 4, Ole Miss 3, Missouri State 2, Mississippi State 2, UCLA 2, Virginia Tech 1

Boston College Opponents in **Bold**

### BOSTON COLLEGE in ACC OVERALL Stats

Category	Actual	Rank
Scoring Offense	76.0	5
Scoring Defense	64.8	12
Scoring Margin	+11.2	9
Free Throw Percentage	.687	7
Field Goal Percentage	.487	1
Field Goal Percentage Defense	.396	12
3-point FG Percentage	.328	8
3-point FG Percentage Defense	.324	13
Rebounding Offense	37.8	13
Rebounding Defense	32.7	6
Rebounding Margin	+5.07	10
Blocked Shots Per Game	3.79	10
Assists Per Game	18.07	2
Steals Per Game	9.36	5
Turnover Margin	-0.07	11
Assist/Turnover Ratio	0.95	9
Offensive Rebounds	12.07	13
Defensive Rebounds	25.7	11
Defensive Rebounding pct.	.687	13
Offensive Rebounding pct.	.365	10
3-Point Field Goals Made Per Game	5.93	T-7

### BOSTON COLLEGE in Individual in the Top 10 in ACC

Category	Actual	Rank
Scoring/Taylor Soule	15.79	4
FG Percentage/Taylor Soule	.604	1
FT Percentage/Taylor Soule	.722	8
Steals/Marnelle Garraud	34	3
Steals Per Game/Marnelle Garraud	2.43	3
Assists Per Game/Marnelle Garraud	4.0	6
3-PT Field Goal Percentage/Marnelle Garraud	.395	T-4
3-PT Field Goals Made/Marnelle Garraud	2.14	T-8
Blocks/Maria Gakdeng	21	T-5
Blocks Per Game/Maria Gakdeng	1.50	T-6
Assist/Turnover Ratio/Marnelle Garraud	1.47	8



# Women's Basketball

## BOSTON COLLEGE in ACC LEAGUE STATS

Category	Actual	Rank
Scoring Offense	72.3	4
Scoring Defense	75.3	10
Scoring Margin	-3.0	8
Free Throw Percentage	.574	13
Field Goal Percentage	.485	1
Field Goal Percentage Defense	.391	8
3-point FG Percentage	.370	6
3-point FG Percentage Defense	.263	2
Rebounding Offense	42.6	3
Rebounding Defense	33.6	T-2
Rebounding Margin	+9.0	2
Blocked Shots Per Game	2.3	T-11
Assists Per Game	16.3	2
Steals Per Game	5.0	T-11
Turnover Margin	-13.0	T-14
Assist/Turnover Ratio	0.66	11
Offensive Rebounds	12.0	7
Defensive Rebounds	30.67	2
Defensive Rebounding pct.	.713	6
Offensive Rebounding pct.	.360	3
3-Point Field Goals Made Per Game	6.67	T-6

## BOSTON COLLEGE in Individual in the Top 10 in ACC LEAGUE STATS

Category	Actual	Rank
Scoring/Maria Gakdeng	13.3	T-10
Rebounding/Maria Gakdeng	9.0	4
Field Goal Percentage/Maria Gakdeng	.667	1
Assists Per Game/Marnelle Garraud	3.3	T-7
Assists Per Game/Makayla Dickens	3.3	T-7
3-PT Field Goal Percentage/Marnelle Garraud	.500	T-4
3-PT Field Goal Percentage/Cameron Swartz	.462	10
3-PT Field Goals Made Per Game/M. Garraud	3.3	3
3-PT Field Goals Made/Marnelle Garraud	10	2
Blocked Shots Per Game/Maria Gakdeng	1.5	8
Offensive Rebounds/Maria Gakdeng	4.0	2
Offensive Rebounds/Taylor Soule	2.67	T-9
Defensive Rebounds/Maria Gakdeng	5.0	T-8

## NCAA NET RANKINGS (JAN. 4)

RANK	PREVIOUS	SCHOOL	CONFERENCE	RECORD
1	1	South Carolina	SEC	13-1
2	2	NC State	ACC	17-3
3	3	North Carolina	ACC	13-6
4	4	Stanford	Pac-12	9-3
5	5	Louisville	ACC	12-1
6	6	Texas	Big 12	10-1
7	7	Arizona	Pac-12	10-6
8	8	Nebraska	Big Ten	12-1
9	9	Iowa St.	Big 12	12-1
10	10	Tennessee	SEC	13-1
11	11	Indiana	Big Ten	11-2
12	12	Virginia Tech	ACC	11-3
13	13	L'Com	Big East	6-3
14	14	Kansas St.	Big 12	11-2
15	15	Notre Dame	ACC	11-3
16	16	Maryland	Big Ten	10-4
17	17	Oregon	Pac-12	6-4
18	18	LSU	SEC	14-1
19	19	Baylor	Big 12	10-3
20	20	Georgia	SEC	12-2
21	21	Utah	Pac-12	8-3
22	22	Georgia Tech	ACC	10-3
23	23	Missouri St.	MVC	10-2
24	24	Ole Miss	Big Ten	9-3
25	25	BYU	WCC	10-1

## Boston College - 2021-22 Women's Basketball Ranking Summary thru games 01/05/2022

Statistic	National Rank	Conference Rank	Value	National Leader	Value	Conference Leader	Value
Assist Turnover Ratio (348 ranked)	110	9	0.95	Tulsa	1.63	Virginia Tech	1.23
Assists (347 ranked)	18	2	230	DePaul	291	Notre Dame	260
Assists Per Game (348 ranked)	17	2	17.7	DePaul	20.8	Notre Dame	18.6
Blocked Shots (348 ranked)	71	9	51	South Carolina	119	Notre Dame	73
Blocked Shots Per Game (348 ranked)	97	9	3.9	South Carolina	8.5	Florida St.	5.5
Defensive Rebounds per Game (30 ranked)				Tennessee	33.4	Pittsburgh	30.9
Fewest Fouls (345 ranked)	279	14	226	Washington	99	Duke	171
Fewest Turnovers (348 ranked)	313	14	243	UC Riverside	86	North Carolina	169
Field-Goal Percentage (348 ranked)	4	2	47.9	Drake	49.4	NC State	48.2
Field-Goal Percentage Defense (348 ranked)	217	14	40.3	Tennessee	30.2	Georgia Tech	31.6
Free Throw Attempts (348 ranked)	78	5	231	Troy	368	North Carolina	304
Free Throws Made (348 ranked)	81	5	161	Troy	268	North Carolina	209
Free-Throw Percentage (348 ranked)	176	6	69.7	Iowa	83.7	Syracuse	77.7
Offensive Rebounds per Game (30 ranked)				Troy	18.4	North Carolina	15.8
Personal Fouls Per Game (348 ranked)	229	12	17.4	Colorado St.	11.2	Notre Dame	13.4
Rebound Margin (348 ranked)	99	12	4.2	Tennessee	16.6	North Carolina	12.8
Rebounds (348 ranked)	126	13	478	Troy	743	Notre Dame	611
Rebounds Per Game (348 ranked)	210	14	36.77	Tennessee	50.43	North Carolina	46.31
Scoring Defense (348 ranked)	204	12	64.3	Georgia Tech	45.7	Georgia Tech	45.7
Scoring Margin (348 ranked)	91	10	10.2	North Carolina	32.3	North Carolina	32.3
Scoring Offense (348 ranked)	49	6	74.5	DePaul	91.7	North Carolina	83.1
Steals (348 ranked)	60	6	125	Tennessee St.	186	North Carolina	148
Steals Per Game (348 ranked)	82	5	9.6	Col. of Charleston	14.8	North Carolina	11.4
Three Pt FG Defense (348 ranked)	276	13	32.9	Lamar University	19.9	North Carolina	22.8
Three-Point Field Goals Attempted (148 ranked)				FGCU	491	Virginia Tech	353
Three-Point Field Goals Made (348 ranked)	155	10	72	FGCU	161	Virginia Tech	132
Three-Point Field Goals Per Game (348 ranked)	200	10	5.5	FGCU	12.4	Virginia Tech	9.4
Three-Point Field-Goal Percentage (348 ranked)	149	9	31.2	Texas A&M	42.1	NC State	41.9
Turnover Margin (348 ranked)	174	10	0.69	Col. of Charleston	11.82	North Carolina	8.54
Turnovers Forced (348 ranked)	69	5	19.38	Niagara	26.20	North Carolina	21.54
Turnovers Per Game (348 ranked)	288	15	18.7	Colorado St.	10.0	Virginia Tech	12.4
Won-Lost Percentage (342 ranked)	96	10	69.2	North Carolina Colorado Arizona	100.0	North Carolina	100.0

Statistic	Player	National Rank	Conference Rank	Value	National Leader	Value	Conference Leader	Value
Assist Turnover Ratio (250 ranked)	Kaylah Ivey Marnelle Garraud	103 173	5 10	1.89 1.56	Tommi Olson, Wyoming	5.14	Lorela Cubaj, Georgia Tech	2.74
Assists (147 ranked)	Marnelle Garraud	87	5	53	Emily Ryan, Iowa St.	106	Olivia Miles, Notre Dame	105
Assists Per Game (247 ranked)	Marnelle Garraud	136	6	4.1	Emily Ryan, Iowa St.	7.6	Olivia Miles, Notre Dame	7.5
Blocked Shots (138 ranked)	Maria Gakdeng	54	3	21	Tamari Key, Tennessee	53	Elizabeth Kitley, Virginia Tech	46
Blocked Shots Per Game (234 ranked)	Maria Gakdeng	68	3	1.62	Lucy Cochrane, Portland	4.00	Elizabeth Kitley, Virginia Tech	3.29
Defensive Rebounds per Game (29 ranked)					Aijha Blackwell, Missouri	10.7	Lorela Cubaj, Georgia Tech	10.2
Double Doubles (32 ranked)					Nalyssa Smith, Baylor	11	Elizabeth Kitley, Virginia Tech	7
Field Goal Attempts (148 ranked)					Kierstan Bell, FGCU	257	Jewel Spear, Wake Forest	216
Field Goals Made (149 ranked)	Taylor Soule	54	3	80	Ayoka Lee, Kansas St.	137	Elizabeth Kitley, Virginia Tech	114
Field-Goal Percentage (250 ranked)	Taylor Soule	11	1	61.5	Celena Taborn, Butler	74.6	Taylor Soule, Boston College	61.5
Final Points (199 ranked)	Taylor Soule	65	4	212	Ayoka Lee, Kansas St.	335	Jewel Spear, Wake Forest	292
Free Throw Attempts (147 ranked)	Taylor Soule	35	2	70	Nia Clouden, Michigan St.	115	Amber Brown, Pittsburgh	74
Free Throws Made (143 ranked)	Taylor Soule	36	3	51	Nia Clouden, Michigan St.	104	Deja Kelly, North Carolina	55
Free-Throw Percentage (249 ranked)	Taylor Soule	222	8	72.9	Kacie Borowicz, North Dakota	97.7	Deja Kelly, North Carolina	83.3
Minutes Played (150 ranked)					Megan McConnell, Duquesne	523:05	Jewel Spear, Wake Forest	469:42
Minutes Played Per Game (150 ranked)					Lauren Park-Lane, Seton Hall	39.30	Amandine Toi, Virginia	35.73
Offensive Rebounds per Game (30 ranked)					Angel Reese, Maryland	5.2		
Points Per Game (250 ranked)	Taylor Soule	102	4	16.3	Jasmine Dickey, Delaware	25.6	Jewel Spear, Wake Forest	20.9
Rebounds (145 ranked)					Bethy Mununga, South Fla.	177	Lorela Cubaj, Georgia Tech	167
Rebounds Per Game (248 ranked)					Lorela Cubaj, Georgia Tech	12.8	Lorela Cubaj, Georgia Tech	12.8
Steals (140 ranked)	Marnelle Garraud	38	2	32	Jordyn Cambridge, Vanderbilt	57	Teisha Hyman, Syracuse	33
Steals Per Game (249 ranked)	Marnelle Garraud	66	2	2.46	Angel Parker, Niagara	4.70	Teisha Hyman, Syracuse	2.54
Three-Point Field Goals Attempted (144 ranked)					Taylor Robertson, Oklahoma	131	Jewel Spear, Wake Forest	115
Three-Point Field Goals Made (147 ranked)	Marnelle Garraud	128	13	25	Taylor Robertson, Oklahoma	62	Aisha Sheppard, Virginia Tech	45
Three-Point Field Goals Per Game (247 ranked)	Marnelle Garraud	187	14	1.92	Taylor Robertson, Oklahoma	4.43	Aisha Sheppard, Virginia Tech	3.21
Three-Point Field-Goal Percentage (181 ranked)					Naomie Alnatas, Kansas City	57.8	Shayann Day-Wilson, Duke	45.6
Triple Doubles (2 ranked)					Caitlin Clark, Iowa	2	Olivia Miles, Notre Dame	1
							Teisha Hyman, Syracuse	1





## Game Notes

# PLAYERS TO WATCH



## TAYLOR SOULE

F - Senior  
5'11  
W. Lebanon, N.H.



- Averaging a team and career-high 15.8 points per game and shooting 60.4 percent from the floor.
- Is second on the team averaging 4.6 rebounds per game.
- Is one of 37 players in the country with 1200 points and 500 rebounds.
- Soule is the only player in the nation to average at least 15.5 points, 4.5 rebounds, 2.0 assists and shoot 60 percent from the field.
- She scored a season-high 25 points in the setback against BU. It was the fourth time in her career she's scored 20 points in back-to-back contests.
- Became the 26th player in school history to reach 500 rebounds after grabbing five against the Terriers.
- Soule is now one of 18 players in school history to reach at least 1,000 points and 500 rebounds.
- Became the 29th member of the 1,000-point club against Harvard after scoring a game-high 19 points on 8-10 shooting from the field.
- Has increased her scoring every season.
- She is turning in career highs in points, field goal percentage, and assists.
- Soule is averaging a career-high 1.08 points per play, while her 60.8 effective field goal percentage is a personal best.
- She is also 57th in the country in win shares at 3.4.
- Was named one of the 20 top small forwards in the country, as she was recognized on the Cheryl Miller Award Watch List.

### CHERYL MILLER AWARD WATCH

#### LIST

Player	School
Sam Thomas	Arizona
Boston College	Taylor Soule
Elizabeth Balogun	Duke
Grace Berger	Indiana
Ashley Jones	Iowa State
Rhyn Howard	Kentucky
Emily Engstler	Louisville
Laura Van Kleunen	Marquette
Chloe Bibby	Maryland
Rickea Jackson	Mississippi State
Alyssa Utsby	North Carolina
Erica Johnson	Ohio

Madi Williams	Oklahoma
Andra Espinoza-Hunter	Seton Hall
Myah Selland	South Dakota State
Haley Jones	Stanford
Mia Davis	Temple
Rae Burrell	Tennessee
Kayla Wells	Texas A&M
Vivian Gray	Texas Tech

- Soule has turned in 21 games with at least 20 points, including a 29-point outing against UMass last season.
- Soule is tied for second in the conference with five games of 20 or points.
- Going deeper into the numbers, Soule is turning in 22.1 points through the 21 performances while shooting 56.7 percent from the floor on 14.4 shot attempts per outing and 78.0 percent shooting from the line.

### TOP SCORING PERFORMANCES

Date	Opponent	FG	FGA	FT	FTA	Total
11.29.20	UMASS	8-16	13-16	29		29
2.16.20	North Carolina	11-13	7-10	29		29
2.16.21	Pittsburgh	11-21	5-7	27		27
3.6.20	vs. Duke	9-17	8-11	26		26
3.1.20	at Syracuse	8-14	10-16	26		26
11.17.21	at Boston U.	11-17	3-3	25		25
11.10.19	St. Francis (NY)	10-13	4-5	24		24
2.25.21	at Syracuse	9-20	5-6	23		23
12.20.19	Delaware St.	8-12	7-9	23		23
12.21.21	Sacred Heart	8-9	6-6	22		22
11.25.20	New Hampshire	6-12	10-12	22		22
2.20.20	Pittsburgh	10-13	2-2	22		22
12.8.19	at Duke	5-10	12-14	22		22
11.24.21	Northeastern	8-11	5-8	21		21
11.13.21	Holy Cross	9-11	2-3	21		21
1.7.21	Notre Dame	6-15	9-12	21		21
2.21.19	at North Carolina	8-17	5-5	21		21
12.5.21	at VCU	6-11	8-9	20		20
2.4.21	Louisville	9-16	2-5	20		20
12.20.20	Syracuse	6-19	8-9	20		20
2.13.20	Notre Dame	6-16	8-10	20		20

- The Eagles are 13-8 in Soule's career when she scores 20 or more points.
- The senior forward also has eight games with at least 20 points and 10 rebounds.

### GAMES WITH 20+ PTS AND 10+ REBS

Date	Opponent	Pts.	Rebs.
11.29.20	UMASS	29	13
2.16.20	North Carolina	29	12
2.16.20	Pittsburgh	27	12
2.25.21	at Syracuse	23	12
12.20.19	Delaware St.	23	16
11.25.20	New Hampshire	22	12
2.20.20	Pittsburgh	22	12
2.13.20	Notre Dame	20	10

- Soule moved into 17th all-time in school history with 1,178 points, surpassing Katie Zenevitch and Emma Guy.

### POINTS SCORED

PTS	Player	Year
10.1,490	Becky Gottstein	(98-03)
11.1,364	Mickel Picco	(06-10)
12.1,361	Alissa Murphy	(96-00)
13.1,337	Ann Odoy	(84-88)
14.1,300	Kathrin Ross	(03-07)
15.1,278	Kristen Doherty	(10-14)
16.1,258	Nicole Boudreau	(12-16)
17.1,214	Taylor Soule	(18-pres.)
18.1,164	Emma Guy	(16-20)
- 1,164	Katie Zenevitch	(10-14)

- Soule has also done a stellar job getting into the line in her career.

- The senior is fifth all-time in free throws after surpassing Becky Gottstein.

### FREE THROWS MADE

FTM	Player	Year
1. 683	Sarah Behn	(89-93)
2. 578	Holly Porter	(93-97)
3. 427	Alissa Murphy	(96-00)
4. 329	Carolyn Swords	(07-11)
5. 328	Taylor Soule	(18-pres.)
5. 318	Becky Gottstein	(98-03)
7. 308	Jessalyn Deveny	(01-05)
8. 306	Kerry Curan	(90-94)
9. 306	Cal Bouchard	(96-00)
10. 303	Pam Thornton	(83-87)
11. 298	Stefanie Murphy	(07-11)
12. 285	Kathrin Ross	(03-07)



## Women's Basketball



### MARNELLE GARRAUD

G - Senior  
5'7  
Lynn, Mass.



- Dropped 13 points against Harvard in the season-opening win.
- Garraud did it all for the Eagles against Holy Cross, registering three points, five steals, nine assists, and two blocks.
- Scored a season-high 20 points on 7-of-13 shooting against North Carolina.
- It was the senior's third-career game with at least 20 points, while two of the outings came in ACC play.
- Is now 10th all-time in 3-pointers after hitting a season-high five 3's against Syracuse.

### 3-PT FIELD GOALS MADE

	3FGM	Player	Year
1.	322	Kelly Hughes	(13-17)
2.	253	Nicole Boudreau	(12-16)
3.	252	Kerri Shields	(09-13)
4.	237	Mickel Picco	(06-10)
5.	212	Cal Bouchard	(96-00)
6.	198	Makayla Dickens	(18-pres.)
7.	183	Amber Jacobs	(00-04)
8.	167	Taylor Ortlepp	(16-20)
9.	158	Clare Droesch	(01-05)
10	152	Marnelle Garraud	(18-pres.)

- Garraud is also working her way up in the all-time steals list. She is now fifth in steals.

### STEALS

	Stls	Player	Year
1.	287	Ann Odoy	(84-88)
2.	197	Kristen Doherty	(10-14)
3.	196	Holly Porter	(93-97)
4.	188	Sarah Behn	(89-93)
5	184	Marnelle Garraud	(18-pres.)
6.	182	Kerry Curran	(90-94)
7.	171	Brianne Stepherson	(98-03)
8.	169	Aja Parham	(02-06)
9.	160	Nicole Boudreau	(12-16)
10.	158	Amber Jacobs	(00-04)

- Steals and assists are not just the only list she is making her way up, as she is 11th all-time in assists.

### ASSISTS

	Asts	Player	Year
4.	528	Kerry Curran	(90-94)
5.	521	Jaclyn Thoman	(07-11)
6.	505	Ann Odoy	(84-88)
7.	469	Amber Jacobs	(00-04)
8.	352	Nicole Boudreau	(12-16)
9.	317	Makayla Dickens	(18-pres.)
10.	314	Clare Droesch	(01-05)
11.	306	Marnelle Garraud	(18-pres.)

- With 830 points, 306 assists and 184 steals, she is one of 12 active players in the country with at least 800 points, 300 assists and 175 steals.
- She is also one of 14 players with at least nine assists and five steals in a single game.
- Is fourth in the ACC in points per scoring attempt (1.43), fourth in effective field goal percentage (.704), and fourth in 3-PT Rate (.714).



### CAMERON SWARTZ

G - Senior  
5'11  
Marietta, Ga.



- Scored a season-high 29 points in the victory over Penn State.
- Also scored 20 points in back-to-back games against UMass and No. 25 North Carolina, giving the senior six games with 20 or more points for her career.
- It was the first time in her career she has scored 20 points in back-to-back games.
- Has been getting done at the free-throw line, where she is second on the team in makes with 29.
- Swartz is first on the team in free-throw percentage shooting 80.6 percent from the line with at least 35 attempts
- Is second on the team in scoring at a clip of 11.8 points per game, while is second on the team averaging 13.0 points per game during league action.
- Is shooting 45.6 percent from inside the arc (31.6% from 3).
- Is averaging 14.8 points through the month of December and January (2 games) after a slow start to the season.
- She is shooting 44.4 percent from the field and 38.2 percent from beyond the arc. Six of her eight double-figure scoring performances are in December and January.

### COMING ALONG COMPARISON (NOV. VS. DEC.)

	NOV.	DEC./JAN.
Points Per Game	7.8	14.8
Rebounds Per Game	3.5	3.9
FG Percentage	31.3	44.4
3FG Percentage	21.7	38.2
Dbf-Figure Scoring Games	2	6



## Game Notes



### MARIA GAKDENG

C - Senior  
6'3  
Lanham, Md.



- Has started in all 14 games this season.
- Was named the ACC Freshman of the Week in back-to-back weeks, becoming the first Eagle since Milan Bolden-Morris (2017-18) to win the award multiple times in one season.
- Averaged 9.0 points, 7.5 rebounds, 1.5 blocks and shot 56.3 percent from the floor through the 1-1 stretch last week.
- Gakdeng poured in a career-high 17 points with six rebounds and tied a personal high with four assists and three blocks en route to winning the award the first time around.
- Her 7-of-7 outing is the second-highest baskets made without a miss among ACC games.
- Scored a career-high 21 points on 9-of-12 shooting from the field against Syracuse, while tying a personal high with nine rebounds.
- Gakdeng is one of four true freshmen in the country to score at least 20 points, grab nine rebounds and shoot 75 percent from the field.
- Has seven games with multiple swats.

Gakdeng leads the ACC among freshmen in blocks (21) and blocks per game (1.50).

- She is one of seven players in the league (only freshman) to block at least three shots in three games.
- She leads BC in field goal percentage (63.3), rebounding (5.7 rpg), and blocks.
- Gakdeng is tied for sixth in the country in total blocks (21) and tied for eighth in blocks per game among freshmen.
- Is tied for 29th among freshmen in rebounds per game.
- Is first in the ACC in conference play shooting 66.7 percent.
- Is also fourth in rebounding (9.0 and tied for 10th at 13.3).
- Is one of two freshmen (Olivia Miles - Notre Dame) in the ACC to score at least 20 points in a league game.



### MAKAYLA DICKENS

G - Senior  
5'8  
Virginia Beach, Va.



- Scored a season-high 21 points in the win against Albany (NY). Shot 8-of-13 from the field.
- The nine boards off the bench are the most since she also had nine off the bench in 2019-20 against Northwestern.
- Is fourth on the team in scoring.
- Has averaged double figures in all three seasons.
- She is one of 33 players in the nation to have at least 1,000 career points and 300 assists.
- She is sixth all-time in 3-pointers and is on pace to finish fourth all-time.

### 3-PT FIELD GOALS MADE

3FGM	Player	Year
1. 322	Kelly Hughes	(13-17)
2. 253	Nicole Boudreau	(12-16)
3. 252	Kerri Shields	(09-13)
4. 237	Mickel Picco	(06-10)
5. 212	Cal Bouchard	(96-00)
6. 201	<b>Makayla Dickens</b>	<b>(18-pres.)</b>
7. 183	Amber Jacobs	(00-04)
8. 167	Taylor Ortlepp	(16-20)
9. 158	Clare Droesch	(01-05)
10. 151	Kindyll Dorsey	(03-07)

- Is also rising up the leaderboards in assists, where she is 10th all-time with 317.
- She is on pace to finish eighth all-time with 374.

### ASSISTS

Asts	Player	Year
4. 528	Kerry Curran	(90-94)
5. 521	Jaclyn Thoman	(07-11)
6. 505	Ann Odoy	(84-88)
7. 469	Amber Jacobs	(00-04)
8. 352	Nicole Boudreau	(12-16)
9. 317	<b>Makayla Dickens</b>	<b>(18-pres.)</b>
10. 314	Clare Droesch	(01-05)
11. 306	<b>Marnelle Garraud</b>	<b>(18-pres.)</b>

- Dished out a season-high seven assists against Syracuse. The seven assists are tied for the third-most helpers in a game this season when coming off the bench.



### JAELYN BATTS

F - Junior  
6'0  
South Riding, Va.



- Has started in 11 straight games, with the team being 8.3 in those games.
- Batts is third on the team in rebounding.
- Is the only player on the team with a double-double this season.
- Turned in 16 points, 12 rebounds, and five assists against Penn State.
- Her 12 rebounds are a team-high this season.
- Turned in a career-high eight assists against UMass.
- Averaging career highs in rebounding (3.7), field goal percentage (46.8), and free throw percentage (81.3).



# Women's Basketball



## 2021-22 Boston College Women's Basketball Combined Team Statistics All games

Page 1/1  
as of Jan 07, 2022

### Game Records

Record	Overall	Home	Away	Neutral
ALL GAMES	10-4	8-1	2-3	0-0
CONFERENCE	1-2	1-1	0-1	0-0
NON-CONFERENCE	9-2	7-0	2-2	0-0

### Score by Periods

Team	1st	2nd	3rd	4th	OT	TOT
Boston College	254	263	284	263	0	1064
Opponents	220	191	243	253	0	907

### Team Box Score

No.	Player	Total			3-Point			F-Throw		Rebounds				Other Stats								
		GP-GS	MIN	AVG	FG-FGA	FG%	3FG-3FGA	3FG%	FT-FTA	FT%	OFF	DEF	TOT	AVG	PF	DQ	A	TO	BLK	STL	PTS	AVG
13	SOULE, Taylor	14-14	411:13	29.4	84-139	.604	1-3	.333	52-72	.722	37	28	65	4.6	32	1	30	32	3	13	221	15.8
1	SWARTZ, Cameron	14-14	377:36	27.0	59-147	.401	18-57	.316	29-36	.806	5	47	52	3.7	27	0	27	49	2	14	165	11.8
14	GARRAUD, Marnelle	14-14	381:44	27.3	45-103	.437	30-76	.395	18-24	.750	6	44	50	3.6	29	1	56	38	6	34	138	9.9
10	DICKENS, Makayla	14-0	302:06	21.6	47-104	.452	23-64	.359	19-25	.760	10	31	41	2.9	17	0	36	28	1	10	136	9.7
5	GAKDENG, Maria	14-14	309:49	22.1	62-98	.633	0-0	.000	10-23	.435	31	49	80	5.7	32	1	17	27	21	7	134	9.6
12	VANTIMMEREN, Ally	14-3	205:51	14.7	36-66	.545	4-15	.267	5-9	.556	18	28	46	3.3	37	0	9	16	6	9	81	5.8
3	BATTS, Jaelyn	14-11	247:33	17.7	22-47	.468	0-0	.000	13-16	.813	19	32	51	3.6	31	3	30	24	9	13	57	4.1
0	WAGGONER, Dontavia	12-0	117:17	9.8	14-31	.452	1-3	.333	3-9	.333	7	21	28	2.3	8	0	2	8	1	14	32	2.7
32	FORD, Clara	14-0	82:25	5.9	14-24	.583	0-0	.000	8-13	.615	9	11	20	1.4	9	0	4	10	0	0	36	2.6
4	LACEY, Jojo	11-0	102:17	9.3	8-25	.320	4-17	.235	5-6	.833	4	8	12	1.1	8	0	4	2	1	5	25	2.3
21	DALEY, Andrea	6-0	52:58	8.8	6-10	.600	0-1	.000	0-2	.000	3	8	11	1.8	3	0	1	4	3	4	12	2.0
2	IVEY, Kaylah	13-0	201:08	15.5	8-37	.216	2-16	.125	7-10	.700	5	15	20	1.5	10	0	36	22	0	8	25	1.9
24	PALMIERI, Allie	2-0	08:03	4.0	1-3	.333	0-1	.000	0-1	.000	2	1	3	1.5	2	0	1	0	0	0	2	1.0
Team											13	37	50					7				
<b>Total</b>		<b>14</b>	<b>2800</b>		<b>406-834</b>	<b>.487</b>	<b>83-253</b>	<b>.328</b>	<b>169-246</b>	<b>.687</b>	<b>169</b>	<b>360</b>	<b>529</b>	<b>37.8</b>	<b>245</b>	<b>6</b>	<b>253</b>	<b>267</b>	<b>53</b>	<b>131</b>	<b>1064</b>	<b>76.0</b>
<b>Opponents</b>		<b>14</b>	<b>2800</b>		<b>333-840</b>	<b>.396</b>	<b>80-247</b>	<b>.324</b>	<b>161-227</b>	<b>.709</b>	<b>164</b>	<b>294</b>	<b>458</b>	<b>32.7</b>	<b>255</b>	<b>6</b>	<b>166</b>	<b>266</b>	<b>24</b>	<b>133</b>	<b>907</b>	<b>64.8</b>

### Team Statistics

	BC	OPP
<b>Scoring</b>	<b>1064</b>	<b>907</b>
Points per game	76.0	64.8
Scoring margin	+11.2	-
<b>Field goals-att</b>	<b>406-834</b>	<b>333-840</b>
Field goal pct	.487	.396
<b>3 point fg-att</b>	<b>83-253</b>	<b>80-247</b>
3-point FG pct	.328	.324
3-pt FG made per game	5.9	5.7
<b>Free throws-att</b>	<b>169-246</b>	<b>161-227</b>
Free throw pct	.687	.709
F-Throws made per game	12.1	11.5
<b>Rebounds</b>	<b>529</b>	<b>458</b>
Rebounds per game	37.8	32.7
Rebounding margin	+5.1	-
<b>Assists</b>	<b>253</b>	<b>166</b>
Assists per game	18.1	11.9
<b>Turnovers</b>	<b>267</b>	<b>266</b>
Turnovers per game	19.1	19.0
Turnover margin	-0.1	-
Assist/turnover ratio	0.9	0.6
<b>Steals</b>	<b>131</b>	<b>133</b>
Steals per game	9.4	9.5
<b>Blocks</b>	<b>53</b>	<b>24</b>
Blocks per game	3.8	1.7
<b>Winning streak</b>	<b>2</b>	<b>-</b>
Home win streak	3	-
<b>Attendance</b>	<b>6511</b>	<b>10052</b>
Home games-Avg/Game	9-723	5-2010
Neutral site-Avg/Game	-	0-0

### Team Results

Date	Opponent		Score	Att.
11/09/2021	Harvard	W	86-60	739
11/13/2021	Holy Cross	W	75-50	853
11/17/2021	at Boston U.	L	65-69	490
11/20/2021	at Providence	W	85-73	426
11/24/2021	Northeastern	W	57-46	522
11/28/2021	Albany (NY)	W	77-65	599
12/02/2021	Penn St.	W	86-69	833
12/05/2021	at VCU	L	65-69	469
12/08/2021	at Massachusetts	W	66-60	958
12/19/2021	North Carolina	L	73-76	1327
12/21/2021	Sacred Heart	W	97-68	869
12/30/2021	at Louisville	L	49-79	7709
01/01/2022	New Hampshire	W	88-52	345
01/06/2022	Syracuse	W	95-71	424



# Game Notes



## 2021-22 Boston College Women's Basketball Combined Team Statistics In Conference games

### Game Records

Record	Overall	Home	Away	Neutral
ALL GAMES	1-2	1-1	0-1	0-0
CONFERENCE	1-2	1-1	0-1	0-0
NON-CONFERENCE	0-0	0-0	0-0	0-0

### Score by Periods

Team	1st	2nd	3rd	4th	OT	TOT
Boston College	52	62	58	45	0	217
Opponents	47	54	55	70	0	226

### Team Box Score

No.	Player	Total			3-Point		F-Throw		Rebounds				Other Stats									
		GP-GS	MIN	AVG	FG-FGA	FG%	3FG-3FGA	3FG%	FT-FTA	FT%	OFF	DEF	TOT	AVG	PF	DQ	A	TO	BLK	STL	PTS	AVG
14	GARRAUD, Marnelle	3-3	87:19	29.1	14-27	.519	10-20	.500	2-2	1.000	1	12	13	4.3	8	1	10	14	2	5	40	13.3
5	GAKDENG, Maria	3-3	74:23	24.8	18-27	.667	0-0	.000	4-9	.444	12	15	27	9.0	12	1	4	6	3	1	40	13.3
1	SWARTZ, Cameron	3-3	83:23	27.8	13-32	.406	6-13	.462	7-10	.700	1	13	14	4.7	9	0	7	11	0	0	39	13.0
13	SOULE, Taylor	3-3	85:53	28.6	10-21	.476	0-0	.000	7-14	.500	8	6	14	4.7	6	0	7	7	0	3	27	9.0
10	DICKENS, Makayla	3-0	68:58	23.0	10-20	.500	3-9	.333	2-3	.667	0	4	4	1.3	4	0	10	11	0	2	25	8.3
0	WAGGONER, Dontavia	2-0	16:51	8.4	4-5	.800	0-0	.000	1-3	.333	1	8	9	4.5	0	0	0	3	0	0	9	4.5
12	VANTIMMEREN, Ally	3-0	44:13	14.7	4-7	.571	0-2	.000	2-2	1.000	1	7	8	2.7	10	0	2	3	2	0	10	3.3
32	FORD, Clara	3-0	11:21	3.8	3-4	.750	0-0	.000	3-5	.600	1	1	2	0.7	0	0	0	0	0	0	9	3.0
3	BATTS, Jaelyn	3-3	53:28	17.8	4-10	.400	0-0	.000	0-0	.000	3	6	9	3.0	8	1	5	11	0	1	8	2.7
4	LACEY, Jojo	3-0	38:07	12.7	2-11	.182	1-7	.143	3-4	.750	0	4	4	1.3	3	0	2	2	0	2	8	2.7
2	IVEY, Kaylah	3-0	33:39	11.2	1-6	.167	0-3	.000	0-0	.000	2	3	5	1.7	4	0	2	5	0	1	2	0.7
21	DALEY, Andrea	1-0	02:25	2.4	0-1	.000	0-0	.000	0-2	.000	0	0	0	0.0	0	0	0	0	0	0	0	0.0
Team											6	13	19					1				
<b>Total</b>		<b>3</b>	<b>600</b>		<b>83-171</b>	<b>.485</b>	<b>20-54</b>	<b>.370</b>	<b>31-54</b>	<b>.574</b>	<b>36</b>	<b>92</b>	<b>128</b>	<b>42.7</b>	<b>64</b>	<b>3</b>	<b>49</b>	<b>74</b>	<b>7</b>	<b>15</b>	<b>217</b>	<b>72.3</b>
<b>Opponents</b>		<b>3</b>	<b>600</b>		<b>79-202</b>	<b>.391</b>	<b>15-57</b>	<b>.263</b>	<b>53-70</b>	<b>.757</b>	<b>37</b>	<b>64</b>	<b>101</b>	<b>33.7</b>	<b>54</b>	<b>1</b>	<b>41</b>	<b>35</b>	<b>5</b>	<b>43</b>	<b>226</b>	<b>75.3</b>

### Team Statistics

	BC	OPP
<b>Scoring</b>	<b>217</b>	<b>226</b>
Points per game	72.3	75.3
Scoring margin	-3.0	-
<b>Field goals-att</b>	<b>83-171</b>	<b>79-202</b>
Field goal pct	.485	.391
<b>3 point fg-att</b>	<b>20-54</b>	<b>15-57</b>
3-point FG pct	.370	.263
3-pt FG made per game	6.7	5.0
<b>Free throws-att</b>	<b>31-54</b>	<b>53-70</b>
Free throw pct	.574	.757
F-Throws made per game	10.3	17.7
<b>Rebounds</b>	<b>128</b>	<b>101</b>
Rebounds per game	42.7	33.7
Rebounding margin	+9.0	-
<b>Assists</b>	<b>49</b>	<b>41</b>
Assists per game	16.3	13.7
<b>Turnovers</b>	<b>74</b>	<b>35</b>
Turnovers per game	24.7	11.7
Turnover margin	-13.0	-
Assist/turnover ratio	0.7	1.2
<b>Steals</b>	<b>15</b>	<b>43</b>
Steals per game	5.0	14.3
<b>Blocks</b>	<b>7</b>	<b>5</b>
Blocks per game	2.3	1.7
<b>Winning streak</b>	<b>1</b>	<b>-</b>
Home win streak	1	-
<b>Attendance</b>	<b>1751</b>	<b>7709</b>
Home games-Avg/Game	2-876	1-7709
Neutral site-Avg/Game	-	0-0

### Team Results

Date	Opponent		Score	Att.
12/19/2021	North Carolina	L	73-76	1327
12/30/2021	at Louisville	L	49-79	7709
01/06/2022	Syracuse	W	95-71	424



# Women's Basketball



2021-22 Boston College Women's Basketball  
Category Leaders  
All games

Page 1/3  
as of Jan 07, 2022

### Points

##	Player	G	Pts	Pts/G
13	Soule, Taylor	14	221	15.8
1	Swartz, Cameron	14	165	11.8
14	Garraud, Marnelle	14	138	9.9
10	Dickens, Makayla	14	136	9.7
5	Gakdeng, Maria	14	134	9.6
12	VanTimmeren, Ally	14	81	5.8
3	Batts, Jaelyn	14	57	4.1
32	Ford, Clara	14	36	2.6
0	Waggoner, Dontavia	12	32	2.7
4	Lacey, JoJo	11	25	2.3
2	Ivey, Kaylah	13	25	1.9
21	Daley, Andrea	6	12	2.0
24	Palmieri, Allie	2	2	1.0

### Scoring Average

##	Player	G	Pts	Pts/G
13	Soule, Taylor	14	221	15.8
1	Swartz, Cameron	14	165	11.8
14	Garraud, Marnelle	14	138	9.9
10	Dickens, Makayla	14	136	9.7
5	Gakdeng, Maria	14	134	9.6
12	VanTimmeren, Ally	14	81	5.8
3	Batts, Jaelyn	14	57	4.1
0	Waggoner, Dontavia	12	32	2.7
32	Ford, Clara	14	36	2.6
4	Lacey, JoJo	11	25	2.3
21	Daley, Andrea	6	12	2.0
2	Ivey, Kaylah	13	25	1.9
24	Palmieri, Allie	2	2	1.0

### Field Goal Percentage

##	Player	FG	Att	Pct
5	Gakdeng, Maria	62	98	.633
13	Soule, Taylor	84	139	.604
21	Daley, Andrea	6	10	.600
32	Ford, Clara	14	24	.583
12	VanTimmeren, Ally	36	66	.545
3	Batts, Jaelyn	22	47	.468
10	Dickens, Makayla	47	104	.452
0	Waggoner, Dontavia	14	31	.452
14	Garraud, Marnelle	45	103	.437
1	Swartz, Cameron	59	147	.401
24	Palmieri, Allie	1	3	.333
4	Lacey, JoJo	8	25	.320
2	Ivey, Kaylah	8	37	.216

### Field Goal Attempts

##	Player	G	Att	Att/G
1	Swartz, Cameron	14	147	10.5
13	Soule, Taylor	14	139	9.9
10	Dickens, Makayla	14	104	7.4
14	Garraud, Marnelle	14	103	7.4
5	Gakdeng, Maria	14	98	7.0

### Field Goals Made

##	Player	G	Made	Made/G
13	Soule, Taylor	14	84	6.0
5	Gakdeng, Maria	14	62	4.4
1	Swartz, Cameron	14	59	4.2
10	Dickens, Makayla	14	47	3.4
14	Garraud, Marnelle	14	45	3.2



2021-22 Boston College Women's Basketball  
Category Leaders  
All games

Page 3/3  
as of Jan 07, 2022

### Offensive Rebounds

##	Player	G	OReb	OReb/G
13	Soule, Taylor	14	37	2.6
5	Gakdeng, Maria	14	31	2.2
3	Batts, Jaelyn	14	19	1.4
12	VanTimmeren, Ally	14	18	1.3
10	Dickens, Makayla	14	10	0.7

### Blocked Shots

##	Player	G	Blk	Blk/G
5	Gakdeng, Maria	14	21	1.5
3	Batts, Jaelyn	14	9	0.6
14	Garraud, Marnelle	14	6	0.4
12	VanTimmeren, Ally	14	6	0.4
13	Soule, Taylor	14	3	0.2

### Defensive Rebounds

##	Player	G	DReb	DReb/G
5	Gakdeng, Maria	14	49	3.5
1	Swartz, Cameron	14	47	3.4
14	Garraud, Marnelle	14	44	3.1
3	Batts, Jaelyn	14	32	2.3
10	Dickens, Makayla	14	31	2.2

### Minutes

##	Player	G	Min	Min/G
13	Soule, Taylor	14	411	29:22
14	Garraud, Marnelle	14	382	27:16
1	Swartz, Cameron	14	378	26:58
5	Gakdeng, Maria	14	310	22:08
10	Dickens, Makayla	14	302	21:35

### Fouls

##	Player	G	PF	PF/G
12	VanTimmeren, Ally	14	37	2.6
13	Soule, Taylor	14	32	2.3
5	Gakdeng, Maria	14	32	2.3
3	Batts, Jaelyn	14	31	2.2
14	Garraud, Marnelle	14	29	2.1

### Turnovers

##	Player	G	TO	TO/G
1	Swartz, Cameron	14	49	3.5
14	Garraud, Marnelle	14	38	2.7
13	Soule, Taylor	14	32	2.3
10	Dickens, Makayla	14	28	2.0
5	Gakdeng, Maria	14	27	1.9

### Foul Outs

##	Player	G	FO
3	Batts, Jaelyn	14	3
13	Soule, Taylor	14	1
14	Garraud, Marnelle	14	1
5	Gakdeng, Maria	14	1



2021-22 Boston College Women's Basketball  
Category Leaders  
All games

Page 2/3  
as of Jan 07, 2022

### 3-Point FG Percentage

##	Player	3FG	Att	Pct
14	Garraud, Marnelle	30	76	.395
10	Dickens, Makayla	23	64	.359
13	Soule, Taylor	1	3	.333
0	Waggoner, Dontavia	1	3	.333
1	Swartz, Cameron	18	57	.316
12	VanTimmeren, Ally	4	15	.267
4	Lacey, JoJo	4	17	.235
2	Ivey, Kaylah	2	16	.125

### 3-Point FG Attempts

##	Player	G	Att	Att/G
14	Garraud, Marnelle	14	76	5.4
10	Dickens, Makayla	14	64	4.6
1	Swartz, Cameron	14	57	4.1
4	Lacey, JoJo	11	17	1.5
2	Ivey, Kaylah	13	16	1.2

### 3-Point FG Made

##	Player	G	Made	Made/G
14	Garraud, Marnelle	14	30	2.1
10	Dickens, Makayla	14	23	1.6
1	Swartz, Cameron	14	18	1.3
12	VanTimmeren, Ally	14	4	0.3
4	Lacey, JoJo	11	4	0.4

### Free Throw Percentage

##	Player	Made	Att	Pct
4	Lacey, JoJo	5	6	.833
3	Batts, Jaelyn	13	16	.813
1	Swartz, Cameron	29	36	.806
10	Dickens, Makayla	19	25	.760
14	Garraud, Marnelle	18	24	.750
13	Soule, Taylor	52	72	.722
2	Ivey, Kaylah	7	10	.700
32	Ford, Clara	8	13	.615
12	VanTimmeren, Ally	5	9	.556
5	Gakdeng, Maria	10	23	.435
0	Waggoner, Dontavia	3	9	.333

### Free Throw Attempts

##	Player	G	Att	Att/G
13	Soule, Taylor	14	72	5.1
1	Swartz, Cameron	14	36	2.6
10	Dickens, Makayla	14	25	1.8
14	Garraud, Marnelle	14	24	1.7
5	Gakdeng, Maria	14	23	1.6

### Free Throws Made

##	Player	G	Made	Made/G
13	Soule, Taylor	14	52	3.7
1	Swartz, Cameron	14	29	2.1
10	Dickens, Makayla	14	19	1.4
14	Garraud, Marnelle	14	18	1.3
3	Batts, Jaelyn	14	13	0.9

### Rebounds

##	Player	G	Reb	Reb/G
5	Gakdeng, Maria	14	80	5.7
13	Soule, Taylor	14	65	4.6
1	Swartz, Cameron	14	52	3.7
3	Batts, Jaelyn	14	51	3.6
14	Garraud, Marnelle	14	50	3.6

### Assists

##	Player	G	Ast	Ast/G
14	Garraud, Marnelle	14	56	4.0
10	Dickens, Makayla	14	36	2.6
2	Ivey, Kaylah	13	36	2.8
13	Soule, Taylor	14	30	2.1
3	Batts, Jaelyn	14	30	2.1

### Rebounds Average

##	Player	G	Reb	Reb/G
5	Gakdeng, Maria	14	80	5.7
13	Soule, Taylor	14	65	4.6
1	Swartz, Cameron	14	52	3.7
3	Batts, Jaelyn	14	51	3.6
14	Garraud, Marnelle	14	50	3.6

### Steals

##	Player	G	Stl	Stl/G
14	Garraud, Marnelle	14	34	2.4
1	Swartz, Cameron	14	14	1.0
0	Waggoner, Dontavia	12	14	1.2
13	Soule, Taylor	14	13	0.9
3	Batts, Jaelyn	14	13	0.9





## Game Notes



### 2021-22 Boston College Women's Basketball Team Game-by-Game All games

Page 1/1  
as of Jan 07, 2022

Opponent	Date	Score	W	Total		3-Pointers		Free throws		Rebounds				PF	A	TO	BLK	STL	PTS	AVG
				FG-FGA	PCT	3FG-3FGA	PCT	FT-FTA	PCT	OFF	DEF	TOT	AVG							
Harvard	11/09/2021	86-60	W	33-66	.500	6-18	.333	14-17	.824	12	30	42	42.0	19	23	13	7	10	86	86.0
Holy Cross	11/13/2021	75-50	W	29-62	.468	8-23	.348	9-16	.563	19	21	40	41.0	20	22	26	8	16	75	80.5
at Boston U.	11/17/2021	65-69	L	28-64	.438	4-18	.222	5-8	.625	12	19	31	37.7	21	12	16	2	11	65	75.3
at Providence	11/20/2021	85-73	W	29-62	.468	9-18	.500	18-24	.750	9	28	37	37.5	15	18	15	7	6	85	77.8
Northeastern	11/24/2021	57-46	W	23-53	.434	3-21	.143	8-12	.667	12	30	42	38.4	11	13	17	3	7	57	73.6
Albany (NY)	11/28/2021	77-65	W	28-53	.528	5-15	.333	16-22	.727	8	18	26	36.3	13	19	17	2	12	77	74.2
Penn St.	12/02/2021	86-69	W	32-71	.451	8-23	.348	14-16	.875	17	26	43	37.3	9	22	17	2	12	86	75.9
at VCU	12/05/2021	65-69	L	22-44	.500	5-14	.357	16-19	.842	10	21	31	36.5	23	11	30	3	12	65	74.5
at Massachusetts	12/08/2021	66-60	W	26-61	.426	5-16	.313	9-17	.529	10	26	36	36.4	21	16	15	5	8	66	73.6
North Carolina	12/19/2021	73-76	L	28-57	.491	7-17	.412	10-13	.769	13	31	44	37.2	29	19	29	3	5	73	73.5
Sacred Heart	12/21/2021	97-68	W	36-52	.692	2-11	.182	23-29	.793	7	32	39	37.4	14	24	17	5	7	97	75.6
at Louisville	12/30/2021	49-79	L	17-48	.354	2-15	.133	13-26	.500	9	24	33	37.0	16	7	21	2	4	49	73.4
New Hampshire	01/01/2022	88-52	W	37-75	.493	8-22	.364	6-12	.500	17	17	34	36.8	15	24	10	2	15	88	74.5
Syracuse	01/06/2022	95-71	W	38-66	.576	11-22	.500	8-15	.533	14	37	51	37.8	19	23	24	2	6	95	76.0
<b>Total</b>		<b>1064</b>		<b>406-834</b>	<b>.487</b>	<b>83-253</b>	<b>.328</b>	<b>169-246</b>	<b>.687</b>	<b>169</b>	<b>360</b>	<b>529</b>	<b>37.8</b>	<b>245</b>	<b>253</b>	<b>267</b>	<b>53</b>	<b>131</b>	<b>1064</b>	<b>76.0</b>
Opponents		907		333-840	.396	80-247	.324	161-227	.709	164	294	458	32.7	255	166	266	24	133	907	64.8

### Boston College Averages

Games Played	Points/game	FG Pct	3FG Pct	FT Pct	Rebounds/game	Assists/game	Turnovers/game	Assist/Turnover ratio	Steals/game	Blocks/game
14	76.0	48.7	32.8	68.7	37.8	18.1	19.1	0.9	9.4	3.8



### 2021-22 Boston College Women's Basketball Opponents Game-by-Game All games

Page 1/1  
as of Jan 07, 2022

Opponent	Date	Score	W	Total		3-Pointers		Free throws		Rebounds				PF	A	TO	BLK	STL	PTS	AVG
				FG-FGA	PCT	3FG-3FGA	PCT	FT-FTA	PCT	OFF	DEF	TOT	AVG							
Harvard	11/09/2021	86-60	W	21-68	.309	9-30	.300	9-13	.692	17	24	41	41.0	18	10	19	2	7	60	60.0
Holy Cross	11/13/2021	75-50	W	17-46	.370	2-8	.250	14-22	.636	11	18	29	35.0	19	7	30	2	8	50	55.0
at Boston U.	11/17/2021	65-69	L	25-52	.481	6-13	.462	13-16	.813	8	26	34	34.7	14	6	19	3	6	69	59.7
at Providence	11/20/2021	85-73	W	26-65	.400	8-23	.348	13-16	.813	13	28	41	36.3	25	12	19	1	6	73	63.0
Northeastern	11/24/2021	57-46	W	19-59	.322	4-17	.235	4-8	.500	13	19	32	35.4	10	11	14	0	10	46	59.6
Albany (NY)	11/28/2021	77-65	W	26-54	.481	9-18	.500	4-7	.571	11	20	31	34.7	19	15	25	2	8	65	60.5
Penn St.	12/02/2021	86-69	W	29-66	.439	7-22	.318	4-4	1.000	11	22	33	34.4	16	20	21	4	11	69	61.7
at VCU	12/05/2021	65-69	L	26-58	.448	4-12	.333	13-17	.765	11	13	24	33.1	21	7	22	0	15	69	62.6
at Massachusetts	12/08/2021	66-60	W	20-60	.333	2-9	.222	18-28	.643	18	28	46	34.6	19	7	20	3	8	60	62.3
North Carolina	12/19/2021	73-76	L	24-63	.381	3-17	.176	25-30	.833	8	18	26	33.7	20	13	10	2	17	76	63.7
Sacred Heart	12/21/2021	97-68	W	27-67	.403	10-27	.370	4-8	.500	11	10	21	32.5	22	17	13	0	7	68	64.1
at Louisville	12/30/2021	49-79	L	30-64	.469	5-15	.333	14-21	.667	13	27	40	33.2	20	17	11	2	11	79	65.3
New Hampshire	01/01/2022	88-52	W	18-43	.419	4-11	.364	12-18	.667	3	22	25	32.5	18	13	29	2	4	52	64.3
Syracuse	01/06/2022	95-71	W	25-75	.333	7-25	.280	14-19	.737	16	19	35	32.7	14	11	14	1	15	71	64.8
<b>Total</b>		<b>907</b>		<b>333-840</b>	<b>.396</b>	<b>80-247</b>	<b>.324</b>	<b>161-227</b>	<b>.709</b>	<b>164</b>	<b>294</b>	<b>458</b>	<b>32.7</b>	<b>255</b>	<b>166</b>	<b>266</b>	<b>24</b>	<b>133</b>	<b>907</b>	<b>64.8</b>
Boston College		1064		406-834	.487	83-253	.328	169-246	.687	169	360	529	37.8	245	253	267	53	131	1064	76.0

### Opponents Averages

Games Played	Points/game	FG Pct	3FG Pct	FT Pct	Rebounds/game	Assists/game	Turnovers/game	Assist/Turnover ratio	Steals/game	Blocks/game
14	64.8	39.6	32.4	70.9	32.7	11.9	19.0	0.6	9.5	1.7



## Women's Basketball



### 2021-22 Boston College Women's Basketball Player Highs Analysis All games

Page 1/3  
as of Jan 07, 2022

#### Boston College - Individual Game Highs

<b>POINTS</b>	29		Cameron Swartz vs Penn St. (12/02/2021)
	25		Taylor Soule at Boston U. (11/17/2021)
	22		Taylor Soule vs Sacred Heart (12/21/2021)
	21		Maria Gakdeng vs Syracuse (01/06/2022)
	21		Makayla Dickens vs Albany (NY) (11/28/2021)
	21		Taylor Soule vs Northeastern (11/24/2021)
	21		Taylor Soule vs Holy Cross (11/13/2021)
<b>FIELD GOALS MADE</b>	11		Cameron Swartz vs Penn St. (12/02/2021)
	11		Taylor Soule at Boston U. (11/17/2021)
<b>FIELD GOAL ATTEMPTS</b>	24		Cameron Swartz vs Penn St. (12/02/2021)
	19		Cameron Swartz at Massachusetts (12/08/2021)
<b>FIELD GOAL PERCENTAGE (min 5 made)</b>	1.000	(7-7)	Taylor Soule vs New Hampshire (01/01/2022)
	1.000	(7-7)	Maria Gakdeng vs Sacred Heart (12/21/2021)
<b>3 PT FG MADE</b>	5		Marnelle Garraud vs Syracuse (01/06/2022)
	4		Marnelle Garraud vs North Carolina (12/19/2021)
	4		Marnelle Garraud vs Penn St. (12/02/2021)
	4		Marnelle Garraud at Providence (11/20/2021)
<b>3 PT FG ATTEMPTS</b>	9		Marnelle Garraud vs Syracuse (01/06/2022)
	8		Cameron Swartz at Massachusetts (12/08/2021)
<b>3 PT FG PERCENTAGE (min 2 made)</b>	1.000	(2-2)	Ally VanTimmeren vs Holy Cross (11/13/2021)
	.750	(3-4)	Cameron Swartz vs North Carolina (12/19/2021)
<b>FREE THROWS MADE</b>	8		Taylor Soule at VCU (12/05/2021)
	6		Cameron Swartz at Louisville (12/30/2021)
	6		Taylor Soule vs Sacred Heart (12/21/2021)
<b>FREE THROW ATTEMPTS</b>	10		Taylor Soule at Louisville (12/30/2021)
	9		Taylor Soule at Massachusetts (12/08/2021)
	9		Taylor Soule at VCU (12/05/2021)
<b>FREE THROW PERCENTAGE (min 3 made)</b>	1.000	(6-6)	Taylor Soule vs Sacred Heart (12/21/2021)
	1.000	(4-4)	Taylor Soule vs Penn St. (12/02/2021)
	1.000	(4-4)	Cameron Swartz at Providence (11/20/2021)
	1.000	(4-4)	Makayla Dickens vs Harvard (11/09/2021)
	1.000	(4-4)	Kaylah Ivey vs Harvard (11/09/2021)
	1.000	(3-3)	Maria Gakdeng vs Syracuse (01/06/2022)
	1.000	(3-3)	Maria Gakdeng vs Sacred Heart (12/21/2021)
	1.000	(3-3)	Taylor Soule at Boston U. (11/17/2021)
1.000	(3-3)	Taylor Soule vs Harvard (11/09/2021)	
<b>REBOUNDS</b>	12		Jaelyn Batts vs Penn St. (12/02/2021)
	9		Maria Gakdeng vs Syracuse (01/06/2022)
	9		Dontavia Waggoner vs Syracuse (01/06/2022)
	9		Maria Gakdeng at Louisville (12/30/2021)
	9		Maria Gakdeng vs North Carolina (12/19/2021)
	9		Maria Gakdeng vs Northeastern (11/24/2021)
	9		Makayla Dickens vs Harvard (11/09/2021)
<b>ASSISTS</b>	9		Marnelle Garraud vs Sacred Heart (12/21/2021)
	9		Marnelle Garraud vs Holy Cross (11/13/2021)
<b>STEALS</b>	6		Marnelle Garraud at Boston U. (11/17/2021)
	5		Dontavia Waggoner vs New Hampshire (01/01/2022)
	5		Marnelle Garraud vs Holy Cross (11/13/2021)
<b>BLOCKED SHOTS</b>	3		Maria Gakdeng vs Sacred Heart (12/21/2021)
	3		Jaelyn Batts at Massachusetts (12/08/2021)
	3		Maria Gakdeng vs Northeastern (11/24/2021)
	3		Andrea Daley vs Holy Cross (11/13/2021)
	3		Maria Gakdeng vs Holy Cross (11/13/2021)





## Game Notes



### 2021-22 Boston College Women's Basketball Team High/Low Analysis All games

Page 1/4  
as of Jan 07, 2022

#### Boston College - Game Highs

<b>POINTS</b>	97		Sacred Heart (12/21/2021)
	95		Syracuse (01/06/2022)
	88		New Hampshire (01/01/2022)
	86		Penn St. (12/02/2021)
	86		Harvard (11/09/2021)
<b>FIELD GOALS MADE</b>	38		Syracuse (01/06/2022)
	37		New Hampshire (01/01/2022)
<b>FIELD GOAL ATTEMPTS</b>	75		New Hampshire (01/01/2022)
	71		Penn St. (12/02/2021)
<b>FIELD GOAL PERCENTAGE</b>	.692	(36-52)	Sacred Heart (12/21/2021)
	.576	(38-66)	Syracuse (01/06/2022)
<b>3 PT FG MADE</b>	11		Syracuse (01/06/2022)
	9		at Providence (11/20/2021)
<b>3 PT FG ATTEMPTS</b>	23		Penn St. (12/02/2021)
	23		Holy Cross (11/13/2021)
<b>3 PT FG PERCENTAGE</b>	.500	(11-22)	Syracuse (01/06/2022)
	.500	(9-18)	at Providence (11/20/2021)
<b>FREE THROWS MADE</b>	23		Sacred Heart (12/21/2021)
	18		at Providence (11/20/2021)
<b>FREE THROW ATTEMPTS</b>	29		Sacred Heart (12/21/2021)
	26		at Louisville (12/30/2021)
<b>FREE THROW PERCENTAGE</b>	.875	(14-16)	Penn St. (12/02/2021)
	.842	(16-19)	at VCU (12/05/2021)
<b>REBOUNDS</b>	51		Syracuse (01/06/2022)
	44		North Carolina (12/19/2021)
<b>ASSISTS</b>	24		New Hampshire (01/01/2022)
	24		Sacred Heart (12/21/2021)
<b>STEALS</b>	16		Holy Cross (11/13/2021)
	15		New Hampshire (01/01/2022)
<b>BLOCKED SHOTS</b>	8		Holy Cross (11/13/2021)
	7		at Providence (11/20/2021)
	7		Harvard (11/09/2021)
<b>TURNOVERS</b>	30		at VCU (12/05/2021)
	29		North Carolina (12/19/2021)
<b>FOULS</b>	29		North Carolina (12/19/2021)
	23		at VCU (12/05/2021)



# Women's Basketball

## LOBO'S LOOK

# Boston College Eagles (10-4) vs. Clemson Tigers (6-8)



	Boston College		Clemson		2021-22		2020-21	
	2021-22	2020-21	2021-22	2020-21	Best	Worst	Best	Worst
Pts/Game	<b>76.0</b> 24th	68.2 116th	62.6 194th	<b>70.7</b> 77th	91.7 DePaul	44.2 Delaware St.	90.8 Maryland	46.0 South Carolina St.
Opp Pts/Game	64.8 184th	<b>70.8</b> 273rd	67.1 222nd	<b>68.8</b> 241st	45.7 Georgia Tech	84.2 Nicholls	50.5 UCF	80.3 Iowa
Net Pts/Game	<b>11.2</b> 57th	-2.7 201st	-4.5 225th	1.8 133rd	28.1 North Carolina	-36.7 New Orleans	29.3 UConn	-31.0 Northwestern St.
Poss/40 Min	<b>75.0</b> 51st	<b>72.4</b> 98th	<b>72.9</b> 107th	<b>73.7</b> 54th	84.4 Niagara	63.2 Drexel	83.1 Troy	63.5 UNC Greensboro
Pts/100 Poss	<b>101.4</b> 44th	93.7 140th	85.7 224th	94.4 126th	116.9 Utah	59.5 New Orleans	122.1 Maryland	62.8 South Carolina St.
Opp Pts/100 Poss	<b>86.4</b> 111th	<b>96.9</b> 262nd	92.1 221st	92.3 168th	67.4 Louisville	113.0 Alcorn	71.7 SFA	110.2 Canisius
Margin/100 Poss	<b>15.0</b> 58th	-3.2 194th	-6.4 223rd	2.1 138th	36.6 North Carolina	-49.3 Delaware St.	40.0 UConn	-43.5 Northwestern St.
Field Goal %	<b>48.7%</b> 2nd	<b>38.5%</b> 231st	<b>37.8%</b> 256th	<b>41.5%</b> 105th	49.3% Drake	28.7% New Orleans	51.3% Iowa	30.5% Northwestern St.
Free Throw %	68.7% 197th	<b>78.1%</b> 11th	<b>66.5%</b> 257th	<b>66.0%</b> 266th	85.2% Iowa	54.3% Oklahoma St.	83.8% Milwaukee	54.4% Jacksonville
2-Point %	<b>55.6%</b> 6th	<b>41.5%</b> 260th	42.6% 227th	<b>46.1%</b> 107th	57.6% Drake	31.2% Delaware St.	59.7% FGCU	32.4% Dixie St.
3-Point %	<b>32.8%</b> 108th	<b>32.5%</b> 112th	<b>24.6%</b> 328th	29.8% 218th	43.2% Tulsa	19.0% Western Caro.	40.8% Iowa	21.1% California
Eff Field Goal %	<b>53.7%</b> 11th	43.9% 212th	<b>41.1%</b> 285th	45.7% 144th	56.5% Drake	31.8% N.C. Central	59.1% Iowa	35.0% Northwestern St.
Pts/Scoring Att	<b>1.12</b> 12th	0.95 207th	<b>0.89</b> 290th	0.97 164th	1.18 Drake	0.73 Siena	1.24 Iowa	0.76 Northwestern St.
Points per Play	<b>0.87</b> 39th	0.78 182nd	<b>0.71</b> 271st	0.78 176th	0.97 Utah	0.52 New Orleans	1.02 Iowa	0.56 South Carolina St.
Free Throw Rate	16.8% 141st	<b>13.7%</b> 306th	15.1% 233rd	16.1% 205th	27.2% Cleveland St.	10.3% Drexel	24.0% Denver	10.0% Vermont
Three Point Rate	26.6% 224th	30.1% 136th	<b>23.5%</b> 283rd	<b>24.8%</b> 262nd	49.1% Middle Tenn.	13.5% Mercer	48.9% FGCU	14.1% Baylor
% Pts from FT	<b>15.9%</b> 246th	<b>16.5%</b> 235th	18.2% 140th	17.1% 209th	31.4% Cleveland St.	10.3% Maine	28.5% Tarleton St.	10.5% Boston U.
% Pts from 2	<b>60.7%</b> 294th	52.7% 126th	<b>62.3%</b> 313th	<b>60.0%</b> 288th	37.7% Campbell	70.0% LSU	39.0% High Point	69.8% Baylor
% Pts from 3	<b>23.4%</b> 257th	<b>30.8%</b> 106th	<b>19.5%</b> 313th	<b>22.9%</b> 276th	48.1% Campbell	10.7% Xavier	43.9% UC San Diego	13.0% Baylor



# Game Notes

# LOBO'S LOOK

## Boston College Eagles (10-4) vs. Clemson Tigers (6-8)



	Boston College		Clemson		2021-22		2020-21	
	2021-22	2020-21	2021-22	2020-21	Best	Worst	Best	Worst
Opp Field Goal %	39.6% 156th	<b>45.1%</b> <b>323rd</b>	40.0% 172nd	<b>41.9%</b> <b>239th</b>	29.9% Tennessee	49.9% North Ala.	32.6% Baylor	47.9% DePaul
Opp Free Throw %	70.9% 225th	<b>75.3%</b> <b>321st</b>	69.3% 165th	<b>65.9%</b> <b>31st</b>	58.1% Rhode Island	82.5% Eastern Mich.	59.8% Prairie View	79.1% Lafayette
Opp 2-Point %	42.7% 128th	<b>52.2%</b> <b>336th</b>	43.2% 138th	<b>47.2%</b> <b>260th</b>	32.0% Tennessee	56.3% Alcorn	35.0% Baylor	55.4% Bellarmine
Opp 3-Point %	<b>32.4%</b> <b>240th</b>	<b>29.1%</b> <b>73rd</b>	<b>34.4%</b> <b>307th</b>	30.8% 141st	20.7% Binghamton	40.5% Saint Francis (PA)	23.1% William & Mary	39.4% Dixie St.
Opp Eff FG %	44.4% 150th	<b>49.6%</b> <b>310th</b>	46.3% 220th	46.9% 227th	35.1% Georgia Tech	54.8% Nicholls	37.2% Baylor	54.2% Bellarmine
Opp Pts/Scoring Att	0.96 156th	<b>1.06</b> <b>322nd</b>	0.99 215th	0.99 180th	0.77 Georgia Tech	1.16 Southern U.	0.82 UConn	1.13 Bellarmine
Opp Pts/Play	0.75 127th	<b>0.83</b> <b>265th</b>	0.78 194th	0.80 177th	0.60 Louisville	0.93 Alcorn	0.61 SFA	0.94 Minnesota
Opp FT Rate	15.4% 140th	16.7% 168th	17.0% 228th	<b>15.3%</b> <b>91st</b>	9.9% Washington	25.5% Southern U.	9.7% Duke	24.6% Grand Canyon
Opp 3P Rate	<b>26.1%</b> <b>97th</b>	27.2% 124th	<b>32.7%</b> <b>289th</b>	29.3% 187th	15.1% FGCU	45.7% Georgetown	17.0% Sam Houston	44.6% Green Bay
% Opp Pts from FT	17.8% 194th	18.1% 177th	16.8% 155th	<b>15.0%</b> <b>49th</b>	10.7% Merrimack	25.6% New Mexico St.	10.2% Holy Cross	24.1% Grambling
% Opp Pts from 2	55.8% 159th	<b>59.6%</b> <b>36th</b>	<b>49.0%</b> <b>321st</b>	<b>57.5%</b> <b>78th</b>	70.1% FGCU	40.1% UMES	65.8% Duke	38.2% Green Bay
% Opp Pts from 3	26.5% 152nd	<b>22.3%</b> <b>38th</b>	<b>34.2%</b> <b>332nd</b>	27.5% 166th	12.4% FGCU	44.8% Georgetown	13.7% Sam Houston	45.4% Green Bay



# Women's Basketball

## LOBO'S LOOK

# Boston College Eagles (10-4) vs. Clemson Tigers (6-8)



	Boston College		Clemson		2021-22		2020-21	
	2021-22	2020-21	2021-22	2020-21	Best	Worst	Best	Worst
Off Reb/Game	12.1 156th	<b>14.8</b> 22nd	<b>15.4</b> 19th	<b>15.7</b> 13th	17.1 DePaul	3.5 Valparaiso	20.2 Delaware	6.3 Southern California
Off Reb Rate	<b>36.5%</b> 55th	<b>36.0%</b> 51st	<b>37.8%</b> 39th	<b>39.2%</b> 14th	45.0% South Carolina	11.9% Valparaiso	47.8% Duke	17.7% Canisius
Def Reb/Game	25.7 148th	<b>21.8</b> 321st	25.4 164th	<b>26.4</b> 108th	34.1 California Baptist	17.7 Alcorn	32.7 California Baptist	18.8 Canisius
Def Reb Rate	68.7% 159th	<b>64.6%</b> 294th	66.5% 237th	68.9% 158th	79.4% Oregon St.	52.8% Alcorn	81.7% Bucknell	49.5% Canisius
Total Reb/Game	37.8 138th	36.7 185th	<b>40.8</b> 60th	<b>42.1</b> 22nd	50.8 Tennessee	25.4 Valparaiso	52.2 Troy	25.6 Canisius
Total Reb Rate	<b>53.6%</b> 60th	48.9% 211th	<b>51.6%</b> 118th	<b>53.8%</b> 34th	61.1% South Carolina	37.4% Alcorn	61.9% Baylor	33.5% Canisius
Assists/Game	<b>18.1</b> 14th	13.1 147th	<b>9.9</b> 315th	12.7 168th	20.8 DePaul	6.3 Delaware St.	20.8 California Baptist	7.6 UNC Greensboro
Turnovers/Game	<b>19.1</b> 297th	15.9 184th	<b>17.9</b> 246th	<b>17.7</b> 272nd	10.3 Colorado St.	26.4 Texas Southern	9.7 Bucknell	24.7 N.C. Central
Assists/Turnovers	<b>0.95</b> 91st	0.82 155th	<b>0.55</b> 305th	0.72 229th	1.49 Creighton	0.30 Delaware St.	1.69 Maryland	0.40 Northwestern St.
Assisted Shot Rate	<b>62.3%</b> 41st	52.5% 209th	<b>42.1%</b> 343rd	<b>47.8%</b> 292nd	75.8% Creighton	31.7% James Madison	75.1% Utah Valley	35.7% Siena
Steals/Game	<b>9.4</b> 76th	<b>8.8</b> 69th	<b>9.3</b> 79th	7.7 156th	14.2 Long Beach St.	3.6 Dixie St.	13.2 San Diego	3.0 Dixie St.
Steal Rate	<b>10.8%</b> 84th	<b>10.4%</b> 83rd	<b>10.9%</b> 81st	8.8% 181st	18.0% Long Beach St.	4.2% Dixie St.	16.0% San Diego	3.6% Dixie St.
Blocks/Game	<b>3.8</b> 104th	<b>2.1</b> 295th	<b>4.1</b> 79th	2.7 207th	8.4 South Carolina	0.7 Loyola Maryland	7.0 South Carolina	1.0 Niagara
Block Rate	<b>8.9%</b> 112th	<b>5.1%</b> 301st	<b>10.7%</b> 63rd	6.4% 226th	18.6% South Carolina	1.7% Portland St.	18.3% Morehead St.	2.4% Niagara
Fouls/Game	17.5 229th	<b>18.9</b> 287th	<b>18.1</b> 258th	<b>19.0</b> 291st	11.5 Colorado St.	24.1 New Mexico St.	12.5 Idaho	22.7 Sam Houston
Foul Rate	20.2% 175th	<b>22.3%</b> 286th	21.2% 235th	<b>21.9%</b> 267th	14.1% Colorado St.	28.9% New Mexico St.	14.7% Fresno St.	26.6% Central Ark.



# Game Notes

## LOBO'S LOOK

# Boston College Eagles (10-4) vs. Clemson Tigers (6-8)



	Boston College		Clemson		2021-22		2020-21	
	2021-22	2020-21	2021-22	2020-21	Best	Worst	Best	Worst
Opp Off Reb/Game	11.7 182nd	11.9 203rd	12.8 252nd	11.9 200th	7.2 Kent St.	17.7 Charleston So.	7.0 Missouri St.	19.2 Canisius
Opp Off Reb Rate	31.3% 159th	35.4% 294th	33.5% 237th	31.1% 158th	20.6% Oregon St.	47.2% Alcorn	18.3% Bucknell	50.5% Canisius
Opp Def Reb/Game	21.0 10th	26.4 219th	25.4 177th	24.2 100th	18.6 Albany (NY)	34.7 High Point	18.0 Duke	33.1 Col. of Charleston
Opp Def Reb Rate	63.5% 55th	64.0% 51st	62.2% 39th	60.8% 14th	55.0% South Carolina	88.1% Valparaiso	52.2% Duke	82.3% Canisius
Opp Total Reb/Game	32.7 47th	38.3 219th	38.2 216th	36.2 118th	27.9 Gonzaga	48.6 N.C. Central	26.0 Gonzaga	50.8 Canisius
Opp Total Reb Rate	46.4% 60th	51.1% 211th	48.4% 118th	46.2% 34th	38.9% South Carolina	62.6% Alcorn	38.1% Baylor	66.5% Canisius
Opp Assists/Game	11.9 123rd	13.4 196th	13.6 206th	12.4 137th	8.2 Montana	22.1 Delaware St.	7.7 Campbell	19.0 Butler
Opp Turnovers/Game	19.0 61st	18.4 49th	17.6 111th	16.7 113th	26.2 Niagara	9.7 Dixie St.	23.2 SFA	9.2 UAB
Opp Assists/Turnover	0.62 66th	0.73 98th	0.77 168th	0.75 107th	0.38 Air Force	2.05 Delaware St.	0.39 SFA	1.48 Oregon St.
Opp Assisted Shot %	49.8% 80th	50.7% 80th	56.4% 215th	47.6% 40th	36.5% Eastern Mich.	71.9% Georgetown	35.1% Duke	69.0% Georgetown
Opp Steals/Game	9.5 304th	7.6 176th	7.6 154th	8.0 204th	4.1 High Point	15.2 Texas Southern	3.9 Bucknell	14.5 N.C. Central
Opp Steal Rate	10.9% 280th	8.7% 130th	8.6% 104th	8.8% 143rd	4.7% Mississippi St.	16.8% Texas Southern	4.3% San Jose St.	15.3% N.C. Central
Opp Blocks/Game	1.7 6th	3.8 283rd	3.5 225th	3.4 207th	1.4 Oregon St.	7.3 Sam Houston	1.1 Wright St.	5.8 SMU
Opp Block Rate	4.1% 6th	8.9% 226th	7.6% 159th	7.4% 131st	3.1% Ole Miss	15.0% Iowa St.	2.6% Wright St.	15.2% Sacramento St.
Opp Fouls/Game	18.2 85th	15.9 239th	18.2 85th	18.7 50th	22.6 Rice	11.6 Northern Colo.	23.6 Sam Houston	11.5 Vermont
Opp Foul Rate	20.9% 118th	18.1% 296th	20.6% 142nd	20.6% 149th	25.8% Rice	14.0% Penn St.	27.1% Tarleton St.	14.5% Vermont



Women's Basketball

# BOSTON COLLEGE WOMEN'S BASKETBALL

## 2021—2022 ROSTER



00

**DONTAVIA WAGGONER**

So. \* Nashville, TN  
6'0 \* Guard



1

**CAMERON SWARTZ**

Jr. \* Marietta, GA  
5'11 \* Guard



2

**KAYLAH IVEY**

So. \* Forestville, MD  
5'8 \* Point Guard



3

**JAELYN BATTS**

Jr. \* South Riding, VA  
6'0 \* Guard/Forward



4

**JOJO LACEY**

So. \* Douglassville, PA  
6'1 \* Guard



5

**MARIA GAKDENG**

Fr. \* Lanham, MD  
6'3 \* Center



10

**MAKAYLA DICKENS**

Sr. \* Virginia Beach, VA  
5'8 \* Guard



11

**AMARIA FIELDS**

Fr. \* Dallas, TX  
5'10 \* Guard



12

**ALLY VANTIMMEREN**

Fr. \* Allendale, MI  
6'2 \* Forward



13

**TAYLOR SOULE**

Sr. \* W. Lebanon, NH  
6'0 \* Forward



14

**MARNELLE GARRAUD**

Sr. \* Lynn, MA  
5'7 \* Point Guard



21

**ANDREA DALEY**

Fr. \* Miami, FL  
6'0 \* Guard



24

**ALLIE PALMIERI**

Fr. \* Trumbull, CT  
5'10 \* Guard



32

**CLARA FORD**

Sr. \* Vienna, VA  
6'3 \* Center



44

**AKUNNA KONKWO**

Jr. \* Alexandria, VA  
6'3 \* Student Assistant



*Eagles*



## Game Notes

# DONTAVIA WAGGONER

Guard-6-0-So.-TR-Nashville, Tenn.-The Ensworth School/NC State

### 2021-22 Season Highlights

- Second on the team in steals per game.
- Recorded a career-high five steals against UNH.
- Played a season-high 19 minutes against the Wildcats.
- Scored a season-high nine points against Syracuse.
- Pulled down a career-best nine rebounds against 'Cuse.
- Averaging 8.0 points, 7.0 rebounds and shooting 50 percent (last 2 games).



GAME-BY-GAME STATS																				
Opponent	Date	GS	MIN	Total		3-Pointers		Free throws		Rebounds				PF	A	TO	BLK	STL	PTS	AVG
				FG-FGA	PCT	3FG-3FGA	PCT	FT-FTA	PCT	OFF	DEF	TOT	AVG							
Harvard	11/09/2021		07:11	0-1	.000	0-1	.000	0-0	.000	0	4	4	4.0	1	0	1	2	0	0.0	
Holy Cross	11/13/2021		15:09	2-3	.667	1-1	1.000	0-0	.000	1	0	1	2.5	1	0	0	0	1	5	2.5
at Boston U.	11/17/2021		10:31	2-3	.667	0-1	.000	0-0	.000	1	3	4	3.0	1	0	2	0	0	4	3.0
at Providence	11/20/2021		10:40	1-4	.250	0-0	.000	0-0	.000	0	1	1	2.5	0	0	0	0	2	2	2.8
Northeastern	11/24/2021		07:44	0-0	.000	0-0	.000	0-0	.000	0	2	2	2.4	0	0	0	0	0	0	2.2
Albany (NY)	11/28/2021		12:06	0-1	.000	0-0	.000	0-0	.000	0	1	1	2.2	2	1	2	0	2	0	1.8
at VCU	12/05/2021		04:21	1-1	1.000	0-0	.000	0-0	.000	0	1	1	2.0	0	0	0	0	2	2	1.9
at Massachusetts	12/08/2021		06:43	1-3	.333	0-0	.000	0-0	.000	0	0	0	1.8	0	0	0	0	0	2	1.9
Sacred Heart	12/21/2021		06:50	0-1	.000	0-0	.000	1-2	.500	0	0	0	1.6	1	0	0	0	0	1	1.8
at Louisville	12/30/2021		03:55	0-0	.000	0-0	.000	0-0	.000	0	0	0	1.4	0	0	0	0	0	0	1.6
New Hampshire	01/01/2022		19:11	3-9	.333	0-0	.000	1-4	.250	4	1	5	1.7	2	1	0	0	5	7	2.1
Syracuse	01/06/2022		12:56	4-5	.800	0-0	.000	1-3	.333	1	8	9	2.3	0	0	3	0	0	9	2.7
<b>Totals</b>			<b>0 117:17</b>	<b>14-31</b>	<b>.452</b>	<b>1-3</b>	<b>.333</b>	<b>3-9</b>	<b>.333</b>	<b>7</b>	<b>21</b>	<b>28</b>	<b>2.3</b>	<b>8</b>	<b>2</b>	<b>8</b>	<b>1</b>	<b>14</b>	<b>32</b>	<b>2.7</b>

### Player Averages

Games Played	Minutes/game	Points/game	FG Pct	3FG Pct	FT Pct	Rebounds/game	Assists/game	Turnovers/game	Assist/Turnover ratio	Steals/game	Blocks/game
12	9.8	2.7	45.2	33.3	33.3	2.3	0.2	0.7	0.3	1.2	0.1

## WAGGONER'S SEASON/CAREER GAME HIGHS

Minutes Played  
Season: 19 vs. New Hampshire (1/1/22)  
Career: 24 vs. Coastal Carolina (12/6/20)^

Free Throws Made  
Season: 1 (3x), last vs. Syracuse (1/6/22)  
Career: 2 vs. Coastal Carolina (12/6/20)^

Blocks  
Season: 1 vs. Harvard (11/9/21)  
Career: 1 (3x), last vs. Harvard (11/9/21)

Points  
Season: 9 vs. Syracuse (1/6/22)  
Career: 16 vs. Coastal Carolina (12/6/20)^

Rebounds  
Season: 9 vs. Syracuse (1/6/22)  
Career: Same

Double-Figure Scoring  
Season: N/A  
Career: 1

Field Goals Made  
Season: 4 vs. Syracuse (1/6/22)  
Career: 5 vs. Coastal Carolina (12/6/20)^

Assists  
Season: 1 (2x), last vs. New Hampshire (1/1/22)  
Career: 3 vs. Coastal Carolina (12/6/20)^

Double-Figure Rebounding  
Season: N/A  
Career: Same

3-Point Field Goals Made  
Season: 1 vs. Holy Cross (11/13/21)  
Career: 1 (3x), last vs. Holy Cross (11/13/21)

Steals  
Season: 5 vs. New Hampshire (1/1/22)  
Career: Same

Double-Doubles  
Season: N/A  
Career: Same

^ - Highs from NC State

## CAREER STATISTICS

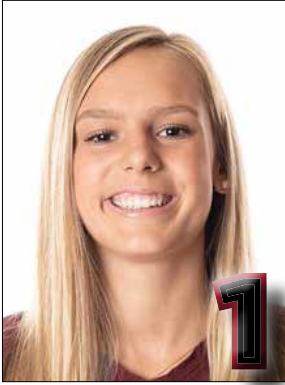
		Field Goals		3-Point		F-Throws		Rebounds				Scoring								
SEASON	TEAM	GP-GS	MIN/AVG	FG-FGA	FG%	3FG-3FGA	3FG%	FT-FTA	FT%	OFF	DEF	TOT	AVG	PF-FO	A	TO	BLK	STL	PTS	AVG
2020-21	NCSU	16-0	118/7.4	14-34	.412	2-8	.250	4-11	.364	7	10	17	1.1	10-0	4	9	2	10	34	2.1
2021-22	BC	12-0	117/9.8	14-31	.452	1-3	.333	3-9	.333	7	21	28	2.3	8-0	2	8	1	14	32	2.7
<b>TOTAL FOR BC</b>		<b>12-0</b>	<b>117/9.8</b>	<b>14-31</b>	<b>.452</b>	<b>1-3</b>	<b>.333</b>	<b>3-9</b>	<b>.333</b>	<b>7</b>	<b>21</b>	<b>28</b>	<b>2.3</b>	<b>8-0</b>	<b>2</b>	<b>8</b>	<b>1</b>	<b>14</b>	<b>32</b>	<b>2.7</b>
<b>TOTAL</b>		<b>28-0</b>	<b>236/8.4</b>	<b>28-65</b>	<b>.431</b>	<b>3-11</b>	<b>.273</b>	<b>7-20</b>	<b>.350</b>	<b>14</b>	<b>31</b>	<b>45</b>	<b>1.6</b>	<b>18-0</b>	<b>6</b>	<b>17</b>	<b>3</b>	<b>24</b>	<b>66</b>	<b>2.4</b>



## Women's Basketball

# CAMERON SWARTZ

Guard-5-11-Sr.-3L-Marietta, Ga.-Fellowship Christian



### 2021-22 Season Highlights

- Is second on the team in scoring.
- Fired in a season-high 29 points against Penn State.
- Shooting a team-high 80.6 percent from the free-throw line.
- Has eights games in double figures.
- Scored in double figures in six of the past eight contests.



### GAME-BY-GAME STATS

Opponent	Date	GS	MIN	Total			3-Pointers			Free throws		Rebounds				PF	A	TO	BLK	STL	PTS	AVG
				FG-FGA	PCT	3FG-3FGA	PCT	FT-FTA	PCT	OFF	DEF	TOT	AVG									
Harvard	11/09/2021	*	24:09	4-9	.444	2-5	.400	0-0	.000	0	2	2	2.0	0	1	2	1	0	10	10.0		
Holy Cross	11/13/2021	*	22:39	3-8	.375	1-4	.250	1-1	1.000	0	3	3	2.5	1	0	5	0	0	8	9.0		
at Boston U.	11/17/2021	*	27:34	1-8	.125	1-3	.333	0-0	.000	0	3	3	2.7	4	2	5	1	3	3	7.0		
at Providence	11/20/2021	*	30:10	5-9	.556	1-4	.250	4-4	1.000	0	5	5	3.3	2	1	4	0	0	15	9.0		
Northeastern	11/24/2021	*	21:02	1-7	.143	0-4	.000	2-3	.667	1	4	5	3.6	1	2	5	0	1	4	8.0		
Albany (NY)	11/28/2021	*	25:23	1-7	.143	0-3	.000	5-6	.833	0	3	3	3.5	1	3	0	0	2	7	7.8		
Penn St.	12/02/2021	*	32:57	11-24	.458	2-7	.286	5-6	.833	0	4	4	3.6	0	2	5	0	2	29	10.9		
at VCU	12/05/2021	*	30:04	2-7	.286	0-1	.000	2-2	1.000	1	2	3	3.5	3	2	3	0	1	6	10.3		
at Massachusetts	12/08/2021	*	37:11	8-19	.421	3-8	.375	1-2	.500	1	2	3	3.4	3	1	5	0	3	20	11.3		
North Carolina	12/19/2021	*	26:16	8-13	.615	3-4	.750	1-2	.500	1	4	5	3.6	4	2	2	0	0	20	12.2		
Sacred Heart	12/21/2021	*	21:30	5-6	.833	0-1	.000	2-2	1.000	0	3	3	3.5	2	1	1	0	1	12	12.2		
at Louisville	12/30/2021	*	32:02	1-11	.091	0-3	.000	6-8	.750	0	4	4	3.6	2	1	6	0	0	8	11.8		
New Hampshire	01/01/2022	*	21:34	5-11	.455	2-4	.500	0-0	.000	1	3	4	3.6	1	5	3	0	1	12	11.8		
Syracuse	01/06/2022	*	25:05	4-8	.500	3-6	.500	0-0	.000	0	5	5	3.7	3	4	3	0	0	11	11.8		
<b>Totals</b>			<b>14</b>	<b>377:36</b>	<b>.401</b>	<b>18-57</b>	<b>.316</b>	<b>29-36</b>	<b>.806</b>	<b>5</b>	<b>47</b>	<b>52</b>	<b>3.7</b>	<b>27</b>	<b>27</b>	<b>49</b>	<b>2</b>	<b>14</b>	<b>165</b>	<b>11.8</b>		

### Player Averages

Games Played	Minutes/game	Points/game	FG Pct	3FG Pct	FT Pct	Rebounds/game	Assists/game	Turnovers/game	Assist/Turnover ratio	Steals/game	Blocks/game
14	27.0	11.8	40.1	31.6	80.6	3.7	1.9	3.5	0.6	1.0	0.1

### SWARTZ'S SEASON/CAREER GAME HIGHS

Minutes Played Season: 37 at UMass (12/8/21) Career: Same	Free Throws Made Season: 5 (2x), last vs. Penn State (12/2/21) Career: 15 vs. Pitt (3/3/21)	Blocks Season: 1 vs. Harvard (11/9/21) Career: 2 vs. New Hampshire (11/25/20)
Points Season: 29 vs. Penn State (12/2/21) Career: 33 vs. Pitt (3/3/21)	Rebounds Season: 5 (4x), last vs. Syracuse (1/6/22) Career: 9 at Louisville (1/4/21)	Double-Figure Scoring Season: 8 Career: 35
Field Goals Made Season: 11 vs. Penn State (12/2/21) Career: 11 (2x), last vs. Penn State (12/2/21)	Assists Season: 5 vs. New Hampshire (1/1/22) Career: 8 vs. Delaware State (12/20/19)	Double-Figure Rebounding Season: N/A Career: Same
3-Point Field Goals Made Season: 3 (2x), last vs. No. 25 North Carolina (12/19/2021) Career: 4 (2x), last Pitt (3/3/21)	Steals Season: 3 (2x), last at UMass (12/8/21) Career: 4 vs. Tulane (11/28/19)	Double-Doubles Season: N/A Career: Same

### CAREER STATISTICS

SEASON	TEAM	GP-GS	MIN/AVG	Field Goals		3-Point		F-Throws		Rebounds				Scoring						
				FG-FGA	FG%	3FG-3FGA	3FG%	FT-FTA	FT%	OFF	DEF	TOT	AVG	PF-FO	A	TO	BLK	STL	PTS	AVG
2019-20	BC	30-19	709/23.6	94-261	.360	35-118	.297	48-70	.686	22	74	96	3.2	51-1	56	76	4	29	271	9.0
2020-21	BC	19-19	575/30.3	87-232	.375	30-106	.283	50-61	.820	31	61	92	4.8	44-1	27	37	5	23	254	13.4
2021-22	BC	14-14	378/27.0	59-147	.401	18-57	.316	29-36	.806	5	47	52	3.7	27-0	27	49	2	14	165	11.8
<b>TOTAL</b>		<b>63-52</b>	<b>1662/26.4</b>	<b>240-640</b>	<b>.375</b>	<b>83-281</b>	<b>.295</b>	<b>127-167</b>	<b>.760</b>	<b>58</b>	<b>182</b>	<b>240</b>	<b>3.8</b>	<b>122-2</b>	<b>110</b>	<b>162</b>	<b>11</b>	<b>66</b>	<b>690</b>	<b>11.0</b>

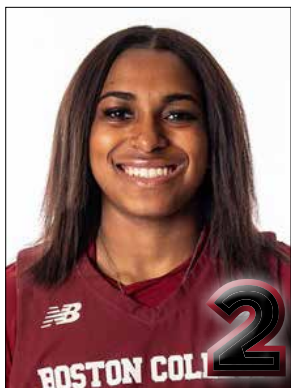




## Game Notes

# KAYLAH IVEY

Guard-5-8-So.-3L-Forestville, Md.-Riverdale Baptist School



### 2021-22 Season Highlights

- Dished out a career-high seven assists in the season opener against Harvard and New Hampshire.
- Is second on the team averaging 2.8 apg.
- Tallied multiple assists in nine of 13 appearances.
- Earned a season-high three steals against Holy Cross.
- Scored a season-best six points against New Hampshire.



## GAME-BY-GAME STATS

Opponent	Date	GS	MIN	Total		3-Pointers		Free throws		Rebounds				PF	A	TO	BLK	STL	PTS	AVG
				FG-FGA	PCT	3FG-3FGA	PCT	FT-FTA	PCT	OFF	DEF	TOT	AVG							
Harvard	11/09/2021		20:14	0-2	.000	0-1	.000	4-4	1.000	1	1	2	2.0	0	7	2	0	1	4	4.0
Holy Cross	11/13/2021		22:28	2-6	.333	0-1	.000	0-2	.000	1	3	4	3.0	1	4	4	0	3	4	4.0
at Boston U.	11/17/2021		18:09	0-3	.000	0-0	.000	0-0	.000	0	1	1	2.3	2	2	1	0	1	0	2.7
at Providence	11/20/2021		11:30	0-1	.000	0-0	.000	0-0	.000	0	2	2	2.3	0	3	0	0	0	0	2.0
Northeastern	11/24/2021		09:08	0-3	.000	0-2	.000	0-0	.000	0	1	1	2.0	0	2	1	0	0	0	1.6
Albany (NY)	11/28/2021		08:22	0-1	.000	0-1	.000	1-2	.500	0	0	0	1.7	1	1	1	0	0	1	1.5
Penn St.	12/02/2021		17:49	1-2	.500	1-2	.500	0-0	.000	0	1	1	1.6	0	2	1	0	1	3	1.7
at VCU	12/05/2021		14:15	0-2	.000	0-1	.000	0-0	.000	0	0	0	1.4	0	1	2	0	1	0	1.5
North Carolina	12/19/2021		08:38	1-3	.333	0-1	.000	0-0	.000	1	1	2	1.4	1	0	1	0	0	2	1.6
Sacred Heart	12/21/2021		19:21	2-5	.400	1-2	.500	0-0	.000	1	2	3	1.6	2	5	3	0	0	5	1.9
at Louisville	12/30/2021		10:50	0-1	.000	0-1	.000	0-0	.000	1	1	2	1.6	1	2	1	0	0	0	1.7
New Hampshire	01/01/2022		26:13	2-6	.333	0-3	.000	2-2	1.000	0	1	1	1.6	0	7	2	0	0	6	2.1
Syracuse	01/06/2022		14:11	0-2	.000	0-1	.000	0-0	.000	0	1	1	1.5	2	0	3	0	1	0	1.9
<b>Totals</b>		<b>0</b>	<b>201:08</b>	<b>8-37</b>	<b>.216</b>	<b>2-16</b>	<b>.125</b>	<b>7-10</b>	<b>.700</b>	<b>5</b>	<b>15</b>	<b>20</b>	<b>1.5</b>	<b>10</b>	<b>36</b>	<b>22</b>	<b>0</b>	<b>8</b>	<b>25</b>	<b>1.9</b>

### Player Averages

Games Played	Minutes/game	Points/game	FG Pct	3FG Pct	FT Pct	Rebounds/game	Assists/game	Turnovers/game	Assist/Turnover ratio	Steals/game	Blocks/game
13	15.5	1.9	21.6	12.5	70.0	1.5	2.8	1.7	1.6	0.6	0.0

## IVEY'S SEASON/CAREER GAME HIGHS

### Minutes Played

Season: 26 vs. New Hampshire (1/1/22)  
 Career: 28 at Syracuse (2/25/21)

### Free Throws Made

Season: 4 vs. Harvard (11/9/21)  
 Career: 5 vs. UMass Lowell (12/6/20)

### Blocks

Season: N/A  
 Career: Same

### Points

Season: 6 vs. New Hampshire (1/1/22)  
 Career: 23 vs. UMass Lowell (12/6/20)

### Rebounds

Season: 4 vs. Holy Cross (11/13/21)  
 Career: 5 vs. Notre Dame (1/7/21)

### Double-Figure Scoring

Season: N/A  
 Career: 1

### Field Goals Made

Season: 2 (3x), last vs. New Hampshire (1/1/22)  
 Career: 7 vs. UMass Lowell (12/6/20)

### Assists

Season: 7 (2x), last vs. New Hampshire (1/1/22)  
 Career: Same

### Double-Figure Rebounding

Season: N/A  
 Career: Same

### 3-Point Field Goals Made

Season: 1 (2x), last vs. Sacred Heart (12/21/21)  
 Career: 4 vs. UMass Lowell (12/6/20)

### Steals

Season: 3 vs. Holy Cross (11/13/21)  
 Career: 5 vs. New Hampshire (11/25/20)

### Double-Doubles

Season: N/A  
 Career: Same

## CAREER STATISTICS

SEASON	TEAM	GP-GS	MIN/AVG	Field Goals		3-Point		F-Throws		Rebounds				Scoring						
				FG-FGA	FG%	3FG-3FGA	3FG%	FT-FTA	FT%	OFF	DEF	TOT	AVG	PF	FO	A	TO	BLK	STL	PTS
2020-21	BC	18-0	333/18.5	23-85	.271	9-42	.214	9-9	1.000	5	23	28	1.6	25-0	37	27	0	24	64	3.6
2021-22	BC	13-0	201/15.5	8-37	.216	2-16	.125	7-10	.700	5	15	20	1.5	10-0	36	22	0	8	25	1.9
<b>TOTAL</b>		<b>31-0</b>	<b>534/17.2</b>	<b>31-122</b>	<b>.254</b>	<b>11-58</b>	<b>.190</b>	<b>16-19</b>	<b>.842</b>	<b>10</b>	<b>38</b>	<b>48</b>	<b>1.5</b>	<b>35-0</b>	<b>73</b>	<b>49</b>	<b>0</b>	<b>32</b>	<b>89</b>	<b>2.9</b>



## Women's Basketball

# JAELYN BATTS

Guard/Forward-6-0-Jr.-2L-South Riding, Va.- Freedom HS



### 2021-22 Season Highlights

- Started in the last 11 games.
- Put forth career highs in pts and rebs. against Penn State
- Earned her first-career double-double against the Nittany Lions.
- Is third on the team in rebounds per game.
- Only player on the team with a double-double.
- Dished out a personal-high eight assists against UMass.



### GAME-BY-GAME STATS

Opponent	Date	GS	MIN	Total		3-Pointers		Free throws		Rebounds				PF	A	TO	BLK	STL	PTS	AVG	
				FG-FGA	PCT	3FG-3FGA	PCT	FT-FTA	PCT	OFF	DEF	TOT	AVG								
Harvard	11/09/2021		08:37	2-3	.667	0-0	.000	2-2	1.000	0	3	3	3.0	0	1	0	2	0	6	6.0	
Holy Cross	11/13/2021		02:48	0-0	.000	0-0	.000	0-0	.000	0	0	0	1.5	1	0	0	0	0	0	3.0	
at Boston U.	11/17/2021		08:13	0-1	.000	0-0	.000	0-0	.000	1	1	2	1.7	5	2	1	0	0	2	2.0	
at Providence	11/20/2021	*	16:54	1-4	.250	0-0	.000	4-5	.800	1	4	5	2.5	4	2	1	2	1	6	3.0	
Northeastern	11/24/2021	*	24:47	2-5	.400	0-0	.000	0-0	.000	2	3	5	3.0	3	1	1	0	1	4	3.2	
Albany (NY)	11/28/2021	*	14:28	1-2	.500	0-0	.000	0-0	.000	0	1	1	2.7	1	0	1	0	0	2	3.0	
Penn St.	12/02/2021	*	27:20	7-8	.875	0-0	.000	2-2	1.000	6	6	12	4.0	1	5	4	0	2	16	4.9	
at VCU	12/05/2021	*	28:00	2-3	.667	0-0	.000	3-4	.750	4	1	5	4.1	5	4	2	1	3	7	5.1	
at Massachusetts	12/08/2021	*	33:03	1-4	.250	0-0	.000	1-2	.500	1	3	4	4.1	2	8	2	3	3	3	4.9	
North Carolina	12/19/2021	*	31:52	3-6	.500	0-0	.000	0-0	.000	1	2	3	4.0	5	2	7	0	0	6	5.0	
Sacred Heart	12/21/2021	*	16:08	1-2	.500	0-0	.000	0-0	.000	0	2	2	3.8	1	1	1	1	0	2	4.7	
at Louisville	12/30/2021	*	12:19	1-2	.500	0-0	.000	0-0	.000	1	2	3	3.8	1	0	3	0	1	2	4.5	
New Hampshire	01/01/2022	*	13:47	1-5	.200	0-0	.000	1-1	1.000	1	2	3	3.7	0	1	0	0	2	3	4.4	
Syracuse	01/06/2022	*	09:17	0-2	.000	0-0	.000	0-0	.000	1	2	3	3.6	2	3	1	0	0	0	4.1	
<b>Totals</b>			<b>11</b>	<b>247:33</b>	<b>22-47</b>	<b>.468</b>	<b>0-0</b>	<b>.000</b>	<b>13-16</b>	<b>.813</b>	<b>19</b>	<b>32</b>	<b>51</b>	<b>3.6</b>	<b>31</b>	<b>30</b>	<b>24</b>	<b>9</b>	<b>13</b>	<b>57</b>	<b>4.1</b>

### Player Averages

Games Played	Minutes/game	Points/game	FG Pct	3FG Pct	FT Pct	Rebounds/game	Assists/game	Turnovers/game	Assist/Turnover ratio	Steals/game	Blocks/game
14	17.7	4.1	46.8	0.0	81.3	3.6	2.1	1.7	1.3	0.9	0.6

### BATTS' SEASON/CAREER GAME HIGHS

Minutes Played  
Season: 33 at UMass (12/8/21)  
Career: Same

Free Throws Made  
Season: 4 at Providence (11/20/21)  
Career: Same

Blocks  
Season: 3 at UMass (12/8/21)  
Career: Same

Points  
Season: 16 vs. Penn State (12/2/21)  
Career: Same

Rebounds  
Season: 12 vs. Penn State (12/2/21)  
Career: Same

Double-Figure Scoring  
Season: 1  
Career: 4

Field Goals Made  
Season: 7 vs. Penn State (12/2/21)  
Career: 7 (2x), last vs. Penn State (12/2/21)

Assists  
Season: 8 at UMass (12/8/21)  
Career: Same

Double-Figure Rebounding  
Season: 1  
Career: Same

3-Point Field Goals Made  
Season: N/A  
Career: Same

Steals  
Season: 3 (2x), last at UMass (12/8/21)  
Career: 5 vs. UMass Lowell (12/6/20)

Double-Doubles  
Season: N/A  
Career: Same

### CAREER STATISTICS

SEASON	TEAM	GP-GS	MIN/AVG	Field Goals		3-Point		F-Throws		Rebounds				Scoring						
				FG-FGA	FG%	3FG-3FGA	3FG%	FT-FTA	FT%	OFF	DEF	TOT	AVG	PF-FO	A	TO	BLK	STL	PTS	AVG
2019-20	BC	31-7	404/13.0	35-74	.473	0-0	.000	6-20	.300	27	33	60	1.9	64-3	14	24	10	10	76	2.5
2020-21	BC	19-1	376/19.8	40-101	.396	0-0	.000	11-18	.611	24	30	54	2.8	54-3	23	27	6	19	91	4.8
2021-22	BC	14-11	248/17.7	22-47	.468	0-0	.000	13-16	.813	19	32	51	3.6	31-3	30	24	9	13	57	4.1
<b>TOTAL</b>		<b>64-19</b>	<b>1028/16.1</b>	<b>97-222</b>	<b>.437</b>	<b>0-0</b>	<b>.000</b>	<b>30-54</b>	<b>.556</b>	<b>70</b>	<b>95</b>	<b>165</b>	<b>2.6</b>	<b>149-9</b>	<b>67</b>	<b>75</b>	<b>25</b>	<b>42</b>	<b>224</b>	<b>3.5</b>



## Game Notes

# JOJO LACEY

Guard/Forward-6-1-So.-1L-Douglassville, Pa.- Westtown High School



### 2021-22 Season Highlights

- Scored five points off the bench against Harvard while pulling down three boards.
- Also scored five points with a pair of boards against Holy Cross.
- Has hit a 3-pointer in four games,
- Has played in 11 games this season.



### GAME-BY-GAME STATS

Opponent	Date	GS	MIN	Total		3-Pointers		Free throws		Rebounds				PF	A	TO	BLK	STL	PTS	AVG
				FG-FGA	PCT	3FG-3FGA	PCT	FT-FTA	PCT	OFF	DEF	TOT	AVG							
Harvard	11/09/2021		10:55	2-4	.500	1-2	.500	0-0	.000	3	0	3	3.0	0	0	0	0	2	5	5.0
Holy Cross	11/13/2021		05:54	1-3	.333	1-3	.333	2-2	1.000	1	1	2	2.5	0	0	0	0	0	5	5.0
at Boston U.	11/17/2021		03:32	1-2	.500	1-2	.500	0-0	.000	0	0	0	1.7	1	0	0	0	0	3	4.3
Northeastern	11/24/2021		04:02	0-0	.000	0-0	.000	0-0	.000	0	1	1	1.5	0	0	0	0	0	0	3.3
Albany (NY)	11/28/2021		00:47	0-0	.000	0-0	.000	0-0	.000	0	0	0	1.2	0	0	0	0	0	0	2.6
at VCU	12/05/2021		02:27	0-0	.000	0-0	.000	0-0	.000	0	0	0	1.0	0	0	0	0	0	0	2.2
North Carolina	12/19/2021		11:24	0-3	.000	0-2	.000	2-2	1.000	0	1	1	1.0	1	2	2	0	1	2	2.1
Sacred Heart	12/21/2021		20:08	2-4	.500	0-2	.000	0-0	.000	0	1	1	1.0	2	1	0	1	0	4	2.4
at Louisville	12/30/2021		17:15	1-6	.167	1-5	.200	1-2	.500	0	3	3	1.2	1	0	0	0	1	4	2.6
New Hampshire	01/01/2022		16:25	0-1	.000	0-1	.000	0-0	.000	0	1	1	1.2	2	1	0	0	1	0	2.3
Syracuse	01/06/2022		09:28	1-2	.500	0-0	.000	0-0	.000	0	0	0	1.1	1	0	0	0	0	2	2.3
<b>Totals</b>		<b>0</b>	<b>102:17</b>	<b>8-25</b>	<b>.320</b>	<b>4-17</b>	<b>.235</b>	<b>5-6</b>	<b>.833</b>	<b>4</b>	<b>8</b>	<b>12</b>	<b>1.1</b>	<b>8</b>	<b>4</b>	<b>2</b>	<b>1</b>	<b>5</b>	<b>25</b>	<b>2.3</b>

### Player Averages

Games Played	Minutes/game	Points/game	FG Pct	3FG Pct	FT Pct	Rebounds/game	Assists/game	Turnovers/game	Assist/Turnover ratio	Steals/game	Blocks/game
11	9.3	2.3	32.0	23.5	83.3	1.1	0.4	0.2	2.0	0.5	0.1

### LACEY'S SEASON/CAREER GAME HIGHS

Minutes Played  
Season: 20 vs. Sacred Heart (12/21/21)  
Career: Same

Free Throws Made  
Season: 2 (2x), last vs. No. 25 North Carolina (12/19/21)  
Career: Same

Blocks  
Season: N/A  
Career: Same

Points  
Season: 5 (2x), last vs. Holy Cross (11/13/21)  
Career: Same

Rebounds  
Season: 3 (2x), last at No. 2/3/ Louisville (12/30/21)  
Career: 3 (3x), last at No. 2/3/ Louisville (12/30/21)

Double-Figure Scoring  
Season: N/A  
Career: Same

Field Goals Made  
Season: 2 (2x), last vs. Sacred Heart (12/21/21)  
Career: Same

Assists  
Season: 2 vs. No. 25 North Carolina (12/19/21)  
Career: Same

Double-Figure Rebounding  
Season: N/A  
Career: Same

3-Point Field Goals Made  
Season: 1 (4x), last at No. 2/3/ Louisville (12/30/21)  
Career: 1 (5x), last at No. 2/3 Louisville (12/30/21)

Steals  
Season: 2 vs. Harvard (11/9/21)  
Career: Same

Double-Doubles  
Season: N/A  
Career: Same

### CAREER STATISTICS

SEASON	TEAM	GP-GS	MIN/AVG	Field Goals		3-Point		F-Throws		Rebounds				Scoring						
				FG-FGA	FG%	3FG-3FGA	3FG%	FT-FTA	FT%	OFF	DEF	TOT	AVG	PF	FO	A	TO	BLK	STL	PTS
2020-21	BC	7-0	48/6.8	3-13	.231	1-10	.100	0-0	.000	3	3	6	0.9	7-1	1	4	0	2	7	1.0
2021-22	BC	11-0	102/9.3	8-25	.320	4-17	.235	5-6	.833	4	8	12	1.1	8-0	4	2	1	5	25	2.3
<b>TOTAL</b>		<b>18-0</b>	<b>150/8.3</b>	<b>11-38</b>	<b>.289</b>	<b>5-27</b>	<b>.185</b>	<b>5-6</b>	<b>.833</b>	<b>7</b>	<b>11</b>	<b>18</b>	<b>1.0</b>	<b>15-1</b>	<b>5</b>	<b>6</b>	<b>1</b>	<b>7</b>	<b>32</b>	<b>1.8</b>



## Women's Basketball

# MARIA GAKDENG

Forward/Center-6-3-Fr.-HS-Lanham, Md.-New Hope Academy



### 2021-22 Season Highlights

- Scored a career-high 21 points on 9-of-12 shooting from the field.
- Grabbed a personal-best nine rebounds in four games.
- Scored in double figures in six games this season.
- Leads the team in blocked shots, rebounding and field goal percentage.
- Has six games with two or more blocks.
- Dished out a career-high four assists against UNC and Sacred Heart.
- Named ACC Freshman of the Week (12/27-1/3)



### GAME-BY-GAME STATS

Opponent	Date	GS	MIN	Total		3-Pointers		Free throws		Rebounds				PF	A	TO	BLK	STL	PTS	AVG	
				FG-FGA	PCT	3FG-3FGA	PCT	FT-FTA	PCT	OFF	DEF	TOT	AVG								
Harvard	11/09/2021	*	19:46	3-9	.333	0-0	.000	0-0	.000	0	2	2	2.0	4	2	2	1	0	6	6.0	
Holy Cross	11/13/2021	*	25:29	2-8	.250	0-0	.000	1-4	.250	3	2	5	3.5	3	1	4	3	1	5	5.5	
at Boston U.	11/17/2021	*	23:01	3-6	.500	0-0	.000	0-2	.000	3	1	4	3.7	0	1	2	0	1	6	5.7	
at Providence	11/20/2021	*	25:56	7-10	.700	0-0	.000	1-2	.500	2	3	5	4.0	2	2	1	1	0	15	8.0	
Northeastern	11/24/2021	*	28:21	5-6	.833	0-0	.000	1-1	1.000	3	6	9	5.0	2	2	1	3	2	11	8.6	
Albany (NY)	11/28/2021	*	14:47	3-4	.750	0-0	.000	0-1	.000	0	0	0	4.2	2	0	1	1	1	6	8.2	
Penn St.	12/02/2021	*	17:34	3-4	.750	0-0	.000	0-0	.000	3	4	7	4.6	1	0	1	2	1	6	7.9	
at VCU	12/05/2021	*	18:09	2-3	.667	0-0	.000	0-0	.000	0	2	2	4.3	3	0	5	2	0	4	7.4	
at Massachusetts	12/08/2021	*	26:20	4-6	.667	0-0	.000	0-0	.000	2	5	7	4.6	1	1	0	1	0	8	7.4	
North Carolina	12/19/2021	*	25:09	5-7	.714	0-0	.000	1-2	.500	5	4	9	5.0	5	4	3	1	0	11	7.8	
Sacred Heart	12/21/2021	*	20:48	7-7	1.000	0-0	.000	3-3	1.000	0	6	6	5.1	1	4	3	3	0	17	8.6	
at Louisville	12/30/2021	*	30:06	4-8	.500	0-0	.000	0-4	.000	3	6	9	5.4	4	0	2	2	1	8	8.6	
New Hampshire	01/01/2022	*	15:16	5-8	.625	0-0	.000	0-1	.000	3	3	6	5.5	1	0	1	1	0	10	8.7	
Syracuse	01/06/2022	*	19:09	9-12	.750	0-0	.000	3-3	1.000	4	5	9	5.7	3	0	1	0	0	21	9.6	
<b>Totals</b>			<b>14</b>	<b>309:49</b>	<b>62-98</b>	<b>.633</b>	<b>0-0</b>	<b>.000</b>	<b>10-23</b>	<b>.435</b>	<b>31</b>	<b>49</b>	<b>80</b>	<b>5.7</b>	<b>32</b>	<b>17</b>	<b>27</b>	<b>21</b>	<b>7</b>	<b>134</b>	<b>9.6</b>

### Player Averages

Games Played	Minutes/game	Points/game	FG Pct	3FG Pct	FT Pct	Rebounds/game	Assists/game	Turnovers/game	Assist/Turnover ratio	Steals/game	Blocks/game
14	22.1	9.6	63.3	0.0	43.5	5.7	1.2	1.9	0.6	0.5	1.5

### GAKDENG'S SEASON/CAREER GAME HIGHS

Minutes Played  
Season: 30 at No. 2/3 Louisville (12/30/21)  
Career: Same

Free Throws Made  
Season: 3 (2x), last vs. Syracuse (1/6/22)  
Career: Same

Blocks  
Season: 3 (3x), last vs. Sacred Heart  
Career: Same

Points  
Season: 21 vs. Syracuse (1/6/22)  
Career: Same

Rebounds  
Season: 9 (4x), last vs. Syracuse (1/6/22)  
Career: Same

Double-Figure Scoring  
Season: 6  
Career: Same

Field Goals Made  
Season: 9 vs. Syracuse (1/6/22)  
Career: Same

Assists  
Season: 4 (2x), last vs. Sacred Heart (12/21/21)  
Career: Same

Double-Figure Rebounding  
Season: N/A  
Career: Same

3-Point Field Goals Made  
Season: N/A  
Career: Same

Steals  
Season: 2 vs. Northeastern (11/24/21)  
Career: Same

Double-Doubles  
Season: N/A  
Career: Same

### CAREER STATISTICS

SEASON	TEAM	GP-GS	MIN/AVG	Field Goals		3-Point		F-Throws		Rebounds				Scoring						
				FG-FGA	FG%	3FG-3FGA	3FG%	FT-FTA	FT%	OFF	DEF	TOT	AVG	PF-FO	A	TO	BLK	STL	PTS	AVG
2021-22	BC	14-14	310/22.1	62-98	.633	0-0	.000	10-23	.435	31	49	80	5.7	32-1	17	27	21	7	134	9.6
<b>TOTAL</b>	<b>14-14</b>	<b>310/22.1</b>	<b>62-98</b>	<b>.633</b>	<b>0-0</b>	<b>.000</b>	<b>10-23</b>	<b>.435</b>	<b>31</b>	<b>49</b>	<b>80</b>	<b>5.7</b>	<b>32-1</b>	<b>17</b>	<b>27</b>	<b>21</b>	<b>7</b>	<b>134</b>	<b>9.6</b>	



## Game Notes

# MAKAYLA DICKENS

Guard-5-8-Sr.-3L-Virginia Bech, Va.-Princess Anne



### 2021-22 Season Highlights

- Scored a season-high 21 points against Albany.
- Second on the team in 3-pointers, third on the team in assists and fourth third on the team in scoring.
- Scored in double figures in six games.
- Dished out a season-high seven assists against Syracuse.



### GAME-BY-GAME STATS

Opponent	Date	GS	MIN	Total		3-Pointers		Free throws		Rebounds				PF	A	TO	BLK	STL	PTS	AVG	
				FG-FGA	PCT	3FG-3FGA	PCT	FT-FTA	PCT	OFF	DEF	TOT	AVG								
Harvard	11/09/2021		19:35	2-5	.400	1-4	.250	4-4	1.000	3	6	9	9.0	0	3	1	1	0	9	9.0	
Holy Cross	11/13/2021		14:29	2-5	.400	1-4	.250	1-1	1.000	1	0	1	5.0	1	3	3	0	2	6	7.5	
at Boston U.	11/17/2021		18:18	3-8	.375	1-4	.250	0-1	.000	2	0	2	4.0	0	1	0	0	0	7	7.3	
at Providence	11/20/2021		28:23	4-11	.364	3-7	.429	3-4	.750	0	4	4	4.0	0	3	1	0	1	14	9.0	
Northeastern	11/24/2021		24:59	4-9	.444	2-6	.333	0-0	.000	1	1	2	3.6	1	2	2	0	2	10	9.2	
Albany (NY)	11/28/2021		31:20	8-13	.615	3-6	.500	2-3	.667	0	5	5	3.8	2	4	1	0	2	21	11.2	
Penn St.	12/02/2021		21:44	1-9	.111	1-7	.143	1-2	.500	2	2	4	3.9	0	4	1	0	0	4	10.1	
at VCU	12/05/2021		23:50	5-11	.455	3-7	.429	2-2	1.000	0	4	4	3.9	3	1	4	0	1	15	10.8	
at Massachusetts	12/08/2021		22:45	2-4	.500	2-4	.500	0-0	.000	0	2	2	3.7	3	3	3	0	0	6	10.2	
North Carolina	12/19/2021		23:02	1-3	.333	0-1	.000	0-0	.000	0	3	3	3.6	3	2	6	0	1	2	9.4	
Sacred Heart	12/21/2021		09:38	1-2	.500	0-1	.000	4-5	.800	0	3	3	3.5	0	0	0	0	0	6	9.1	
at Louisville	12/30/2021		20:42	3-7	.429	0-2	.000	2-2	1.000	0	0	0	3.3	1	1	2	0	0	8	9.0	
New Hampshire	01/01/2022		18:08	5-7	.714	3-5	.600	0-0	.000	1	0	1	3.1	3	2	1	0	0	13	9.3	
Syracuse	01/06/2022		25:14	6-10	.600	3-6	.500	0-1	.000	0	1	1	2.9	0	7	3	0	1	15	9.7	
<b>Totals</b>			<b>0</b>	<b>302:06</b>	<b>47-104</b>	<b>.452</b>	<b>23-64</b>	<b>.359</b>	<b>19-25</b>	<b>.760</b>	<b>10</b>	<b>31</b>	<b>41</b>	<b>2.9</b>	<b>17</b>	<b>36</b>	<b>28</b>	<b>1</b>	<b>10</b>	<b>136</b>	<b>9.7</b>

### Player Averages

Games Played	Minutes/game	Points/game	FG Pct	3FG Pct	FT Pct	Rebounds/game	Assists/game	Turnovers/game	Assist/Turnover ratio	Steals/game	Blocks/game
14	21.6	9.7	45.2	35.9	76.0	2.9	2.6	2.0	1.3	0.7	0.1

### DICKENS' SEASON/CAREER GAME HIGHS

#### Minutes Played

Season: 31 vs. Albany (11/28/21)  
Career: 50 vs. Duke (1/31/19)

#### Free Throws Made

Season: 4 vs. Harvard (11/9/21)  
Career: 6 (4x), last vs. Clemson (3/5/20)

#### Blocks

Season: 1 vs. Harvard (11/9/21)  
Career: 1 (6x), last Harvard (11/9/21)

#### Points

Season: 21 vs. Albany (11/28/21)  
Career: 26 at Pitt (1/5/20)

#### Rebounds

Season: 9 vs. Harvard (11/9/21)  
Career: 16 at Wake Forest (1/10/19)

#### Double-Figure Scoring

Season: 6  
Career: 55

#### Field Goals Made

Season: 8 vs. Albany (11/28/21)  
Career: 11 at Pitt (1/5/20)

#### Assists

Season: 7 vs. Syracuse (1/6/22)  
Career: 9 at Syracuse (3/1/20)

#### Double-Figure Rebounding

Season: N/A  
Career: 4

#### 3-Point Field Goals Made

Season: 3 (4x), last vs. Syracuse (1/6/22)  
Career: 7 (2x), last at Virginia (2/7/19)

#### Steals

Season: 2 (2x), last vs. Albany (11/28/21)  
Career: 4 (2x), last vs. Syracuse (3/3/19)

#### Double-Doubles

Season: N/A  
Career: 4

### CAREER STATISTICS

		Field Goals		3-Point		F-Throws		Rebounds				Scoring								
SEASON	TEAM	GP-GS	MIN/AVG	FG-FGA	FG%	3FG-3FGA	3FG%	FT-FTA	FT%	OFF	DEF	TOT	AVG	PF-FO	A	TO	BLK	STL	PTS	AVG
2018-19	BC	30-18	861/28.7	123-334	.368	62-173	.358	47-66	.712	37	121	158	5.3	73-0	116	132	1	35	355	11.8
2019-20	BC	32-26	917/28.7	108-308	.351	62-176	.352	56-70	.800	30	112	142	4.4	72-0	121	94	2	31	334	10.4
2020-21	BC	19-19	584/30.8	87-214	.407	54-120	.450	11-14	.786	19	56	75	3.9	49-3	44	55	2	18	239	12.6
2021-22	BC	14-0	302/21.6	47-104	.452	23-64	.359	19-25	.760	10	31	41	2.9	17-0	36	28	1	10	136	9.7
<b>TOTAL</b>		<b>95-63</b>	<b>2665/28.1</b>	<b>365-960</b>	<b>.380</b>	<b>201-533</b>	<b>.377</b>	<b>133-175</b>	<b>.760</b>	<b>96</b>	<b>320</b>	<b>416</b>	<b>4.4</b>	<b>211-3</b>	<b>317</b>	<b>309</b>	<b>6</b>	<b>94</b>	<b>1064</b>	<b>11.2</b>



## Women's Basketball

# ALLY VANTIMMEREN

Forward-6-2-Fr.-1L-Allendale, Mich.-Jenison



### 2021-22 Season Highlights

- Was a team-high plus-29 in the Harvard win in 25 minutes.
- Scored a season-high 15 points against Albany.
- Third on the team in field goal percentage (.540) with at least 50 attempts.
- Scored in double figures in two games this season.



### GAME-BY-GAME STATS

Opponent	Date	GS	MIN	Total		3-Pointers		Free throws		Rebounds				PF	A	TO	BLK	STL	PTS	AVG
				FG-FGA	PCT	3FG-3FGA	PCT	FT-FTA	PCT	OFF	DEF	TOT	AVG							
Harvard	11/09/2021	*	24:42	3-7	.429	0-0	.000	0-1	.000	2	2	4	4.0	4	1	0	0	2	6	6.0
Holy Cross	11/13/2021	*	14:12	3-5	.600	2-2	1.000	2-2	1.000	1	4	5	4.5	4	0	4	0	0	10	8.0
at Boston U.	11/17/2021	*	20:15	3-6	.500	0-2	.000	0-0	.000	0	2	2	3.7	1	1	1	1	0	6	7.3
at Providence	11/20/2021		06:36	2-3	.667	1-1	1.000	0-0	.000	0	1	1	3.0	3	0	2	2	0	5	6.8
Northeastern	11/24/2021		08:06	0-3	.000	0-2	.000	0-0	.000	1	2	3	3.0	0	0	0	0	0	0	5.4
Albany (NY)	11/28/2021		20:28	7-8	.875	1-2	.500	0-0	.000	3	0	3	3.0	3	0	2	0	2	15	7.0
Penn St.	12/02/2021		21:49	4-9	.444	0-0	.000	0-0	.000	4	1	5	3.3	2	2	0	0	2	8	7.1
at VCU	12/05/2021		05:16	1-2	.500	0-1	.000	1-2	.500	0	2	2	3.1	3	0	1	0	1	3	6.6
at Massachusetts	12/08/2021		05:15	1-2	.500	0-0	.000	0-0	.000	1	1	2	3.0	3	0	1	0	0	2	6.1
North Carolina	12/19/2021		15:37	0-2	.000	0-2	.000	2-2	1.000	0	3	3	3.0	2	1	1	1	0	2	5.7
Sacred Heart	12/21/2021		16:20	4-6	.667	0-1	.000	0-2	.000	4	3	7	3.4	2	2	2	0	0	8	5.9
at Louisville	12/30/2021		11:57	2-2	1.000	0-0	.000	0-0	.000	0	1	1	3.2	4	0	0	0	0	4	5.8
New Hampshire	01/01/2022		18:38	4-8	.500	0-2	.000	0-0	.000	1	3	4	3.2	2	1	0	1	2	8	5.9
Syracuse	01/06/2022		16:39	2-3	.667	0-0	.000	0-0	.000	1	3	4	3.3	4	1	2	1	0	4	5.8
<b>Totals</b>		<b>3</b>	<b>205:51</b>	<b>36-66</b>	<b>.545</b>	<b>4-15</b>	<b>.267</b>	<b>5-9</b>	<b>.556</b>	<b>18</b>	<b>28</b>	<b>46</b>	<b>3.3</b>	<b>37</b>	<b>9</b>	<b>16</b>	<b>6</b>	<b>9</b>	<b>81</b>	<b>5.8</b>

### Player Averages

Games Played	Minutes/game	Points/game	FG Pct	3FG Pct	FT Pct	Rebounds/game	Assists/game	Turnovers/game	Assist/Turnover ratio	Steals/game	Blocks/game
14	14.7	5.8	54.5	26.7	55.6	3.3	0.6	1.1	0.6	0.6	0.4

### VANTIMMEREN'S SEASON/CAREER GAME HIGHS

#### Minutes Played

Season: 25 vs. Harvard (11/9/21)  
Career: 29 at Louisville (1/14/21)

#### Free Throws Made

Season: 2 (2x), last vs. No. 25 North Carolina (12/19/21)  
Career: 3 vs. Syracuse (3/4/21)

#### Blocks

Season: 2 at Providence (11/20/21)  
Career: 3 vs. Notre Dame (1/17/21)

#### Points

Season: 15 vs. Albany (11/28/21)  
Career: 17 at Louisville (1/14/21)

#### Rebounds

Season: 7 vs. Sacred Heart (12/21/21)  
Career: 7 (3x), last vs. Sacred Heart (12/21/21)

#### Double-Figure Scoring

Season: 2  
Career: 4

#### Field Goals Made

Season: 7 vs. Albany (11/28/21)  
Career: 7 (2x), last vs. Albany (11/28/21)

#### Assists

Season: 2 (4x), last vs. New Hampshire (1/1/22)  
Career: 2 (3x), last vs. Sacred Heart (12/21/21)

#### Double-Figure Rebounding

Season: N/A  
Career: Same

#### 3-Point Field Goals Made

Season: 2 vs. Holy Cross (11/13/21)  
Career: 3 at Louisville (1/14/21)

#### Steals

Season: 2 (3x), last vs. Penn State (12/02/21)  
Career: 2 (6x), last vs. Penn State (12/02/21)

#### Double-Doubles

Season: N/A  
Career: Same

### CAREER STATISTICS

		Field Goals		3-Point		F-Throws		Rebounds				Scoring								
SEASON	TEAM	GP-GS	MIN/AVG	FG-FGA	FG%	3FG-3FGA	3FG%	FT-FTA	FT%	OFF	DEF	TOT	AVG	PF-FO	A	TO	BLK	STL	PTS	AVG
2020-21	BC	10-1	209/20.9	24-68	.353	8-24	.333	3-8	.375	18	30	48	4.8	32-2	6	22	7	9	59	5.9
2021-22	BC	14-3	206/14.7	36-66	.545	4-15	.267	5-9	.556	18	28	46	3.3	37-0	9	16	6	9	81	5.8
<b>TOTAL</b>		<b>24-4</b>	<b>415/17.3</b>	<b>60-134</b>	<b>.448</b>	<b>12-39</b>	<b>.308</b>	<b>8-17</b>	<b>.471</b>	<b>36</b>	<b>58</b>	<b>94</b>	<b>3.9</b>	<b>69-2</b>	<b>15</b>	<b>38</b>	<b>13</b>	<b>18</b>	<b>140</b>	<b>5.8</b>



### Game Notes

# TAYLOR SOULE

Forward-5-11-Sr.-3L-W. Lebanon, N.H.-Kimball Union Academy



#### 2021-22 Season Highlights

- Poured in a season-high 25 points on 11-17 shooting at BU.
- Became the 26th member of the 500-rebound club.
- Has scored at least 20 points in five games.
- Leads the team in scoring.
- Her 15.7 points per game is a career-high.
- Grabbed a season-high eight rebounds at VCU.



### GAME-BY-GAME STATS

Opponent	Date	GS	MIN	Total		3-Pointers		Free throws		Rebounds				PF	A	TO	BLK	STL	PTS	AVG	
				FG-FGA	PCT	3FG-3FGA	PCT	FT-FTA	PCT	OFF	DEF	TOT	AVG								
Harvard	11/09/2021	*	20:45	8-10	.800	0-0	.000	3-3	1.000	1	1	2	2.0	4	3	2	0	2	19	19.0	
Holy Cross	11/13/2021	*	26:52	9-11	.818	1-1	1.000	2-3	.667	4	1	5	3.5	2	3	2	0	1	21	20.0	
at Boston U.	11/17/2021	*	29:33	11-17	.647	0-1	.000	3-3	1.000	4	1	5	4.0	5	2	1	0	0	25	21.7	
at Providence	11/20/2021	*	35:14	4-9	.444	0-0	.000	3-5	.600	3	0	3	3.8	2	1	5	2	0	11	19.0	
Northeastern	11/24/2021	*	34:04	8-11	.727	0-0	.000	5-8	.625	2	3	5	4.0	3	1	2	0	0	21	19.4	
Albany (NY)	11/28/2021	*	31:39	6-11	.545	0-0	.000	5-6	.833	4	2	6	4.3	1	3	3	0	0	17	19.0	
Penn St.	12/02/2021	*	29:52	0-7	.000	0-0	.000	4-4	1.000	1	4	5	4.4	1	5	2	0	2	4	16.9	
at VCU	12/05/2021	*	38:22	6-11	.545	0-1	.000	8-9	.889	4	4	8	4.9	3	1	8	0	1	20	17.3	
at Massachusetts	12/08/2021	*	37:12	7-15	.467	0-0	.000	5-9	.556	1	3	4	4.8	4	0	0	1	1	19	17.4	
North Carolina	12/19/2021	*	23:20	2-5	.400	0-0	.000	2-2	1.000	2	2	4	4.7	3	0	1	0	1	6	16.3	
Sacred Heart	12/21/2021	*	22:02	8-9	.889	0-0	.000	6-6	1.000	0	2	2	4.5	1	0	0	0	1	22	16.8	
at Louisville	12/30/2021	*	31:33	4-7	.571	0-0	.000	4-10	.400	4	1	5	4.5	1	2	2	0	0	12	16.4	
New Hampshire	01/01/2022	*	19:44	7-7	1.000	0-0	.000	1-2	.500	5	1	6	4.6	0	4	0	0	2	15	16.3	
Syracuse	01/06/2022	*	31:00	4-9	.444	0-0	.000	1-2	.500	2	3	5	4.6	2	5	4	0	2	9	15.8	
<b>Totals</b>			<b>14</b>	<b>411:13</b>	<b>84-139</b>	<b>.604</b>	<b>1-3</b>	<b>.333</b>	<b>52-72</b>	<b>.722</b>	<b>37</b>	<b>28</b>	<b>65</b>	<b>4.6</b>	<b>32</b>	<b>30</b>	<b>32</b>	<b>3</b>	<b>13</b>	<b>221</b>	<b>15.8</b>

#### Player Averages

Games Played	Minutes/game	Points/game	FG Pct	3FG Pct	FT Pct	Rebounds/game	Assists/game	Turnovers/game	Assist/Turnover ratio	Steals/game	Blocks/game
14	29.4	15.8	60.4	33.3	72.2	4.6	2.1	2.3	0.9	0.9	0.2

### SOULE'S SEASON/CAREER GAME HIGHS

Minutes Played  
Season: 38 at VCU (12/5/21)  
Career: 40 vs. Syracuse (12/20/20)

Free Throws Made  
Season: 8 at VCU (12/5/21)  
Career: 13 vs. UMass (11/29/20)

Blocks  
Season: 2 at Providence (11/20/21)  
Career: 4 vs. Delaware State (12/20/19)

Points  
Season: 25 at Boston University (11/17/21)  
Career: 29 (2x) last vs. UMass (11/29/20)

Rebounds  
Season: 8 at VCU (12/5/21)  
Career: 16 vs. Delaware State (12/20/19)

Double-Figure Scoring  
Season: 11  
Career: 56

Field Goals Made  
Season: 11 at Boston University (11/17/21)  
Career: 11 (2x), last at Boston University (11/17/21)

Assists  
Season: 5 (2x), last vs. Syracuse (1/6/22)  
Career: 5 (3x), last vs. Syracuse (1/6/22)

Double-Figure Rebounding  
Season: N/A  
Career: 17

3-Point Field Goals Made  
Season: 1 vs. Holy Cross (11/13/21)  
Career: 1 (2x), last vs. Holy Cross (11/13/21)

Steals  
Season: 2 (2x), last vs. Penn State (12/2/21)  
Career: 5 vs. Notre Dame (2/13/20)

Double-Doubles  
Season: N/A  
Career: 14

### CAREER STATISTICS

SEASON	TEAM	GP-GS	MIN/AVG	FG-FGA	FG%	3FG-3FGA	3FG%	FT-FTA	FT%	OFF	DEF	TOT	AVG	PF-FO	A	TO	BLK	STL	PTS	AVG
2018-19	BC	29-20	634/21.9	84-156	.538	0-1	.000	61-99	.616	60	53	113	3.9	84-0	39	56	11	24	229	7.9
2019-20	BC	32-30	877/27.4	163-302	.540	0-5	.000	139-193	.720	97	148	245	7.7	92-3	42	66	14	38	465	14.5
2020-21	BC	19-19	597/31.4	111-258	.430	1-7	.143	76-101	.752	68	65	133	7.0	57-2	32	36	5	24	299	15.7
2021-22	BC	14-14	411/29.4	84-139	.604	1-3	.333	52-72	.722	37	28	65	4.6	32-1	30	32	3	13	221	15.8
<b>TOTAL</b>		<b>94-83</b>	<b>2520/26.8</b>	<b>442-855</b>	<b>.517</b>	<b>2-16</b>	<b>.125</b>	<b>328-465</b>	<b>.705</b>	<b>262</b>	<b>294</b>	<b>556</b>	<b>5.9</b>	<b>265-6</b>	<b>143</b>	<b>190</b>	<b>33</b>	<b>99</b>	<b>1214</b>	<b>12.9</b>



## Women's Basketball

# MARNELLE GARRAUD

Guard-5-7-Sr.-3L-Lynn, Mass.-Nobles & Greenough School



### 2021-22 Season Highlights

- First on the team in assists and steals.
- Dished out a season-high nine assists against Holy Cross and SHU.
- Tied a personal high with six steals against BU.
- Poured in a season-high 20 points against North Carolina.
- Scored in double figures in six games.



### GAME-BY-GAME STATS

Opponent	Date	GS	MIN	Total		3-Pointers		Free throws		Rebounds				PF	A	TO	BLK	STL	PTS	AVG
				FG-FGA	PCT	3FG-3FGA	PCT	FT-FTA	PCT	OFF	DEF	TOT	AVG							
Harvard	11/09/2021	*	27:55	5-9	.556	2-5	.400	1-2	.500	0	4	4	4.0	3	4	1	1	1	13	13.0
Holy Cross	11/13/2021	*	25:12	1-5	.200	1-5	.200	0-0	.000	0	3	3	3.5	2	9	1	2	5	3	8.0
at Boston U.	11/17/2021	*	29:38	3-8	.375	1-5	.200	2-2	1.000	0	5	5	4.0	1	1	3	0	6	9	8.3
at Providence	11/20/2021	*	27:40	5-10	.500	4-6	.667	3-4	.750	2	3	5	4.3	2	6	1	0	2	17	10.5
Northeastern	11/24/2021	*	34:14	2-8	.250	1-7	.143	0-0	.000	1	5	6	4.6	1	3	4	0	1	5	9.4
Albany (NY)	11/28/2021	*	31:38	1-3	.333	1-3	.333	3-4	.750	0	2	2	4.2	0	7	3	1	3	6	8.8
Penn St.	12/02/2021	*	30:18	5-8	.625	4-7	.571	2-2	1.000	0	2	2	3.9	3	2	3	0	2	16	9.9
at VCU	12/05/2021	*	25:01	3-4	.750	2-3	.667	0-0	.000	0	1	1	3.5	3	2	5	0	2	8	9.6
at Massachusetts	12/08/2021	*	23:21	0-6	.000	0-4	.000	2-4	.500	2	4	6	3.8	4	2	2	0	1	2	8.8
North Carolina	12/19/2021	*	32:08	7-13	.538	4-7	.571	2-2	1.000	1	3	4	3.8	5	6	5	1	2	20	9.9
Sacred Heart	12/21/2021	*	22:53	3-6	.500	1-4	.250	3-4	.750	0	2	2	3.6	0	9	0	0	4	10	9.9
at Louisville	12/30/2021	*	27:51	1-4	.250	1-4	.250	0-0	.000	0	5	5	3.8	1	1	5	0	1	3	9.3
New Hampshire	01/01/2022	*	16:35	3-9	.333	3-7	.429	0-0	.000	0	1	1	3.5	2	1	1	0	2	9	9.3
Syracuse	01/06/2022	*	27:20	6-10	.600	5-9	.556	0-0	.000	0	4	4	3.6	2	3	4	1	2	17	9.9
<b>Totals</b>			<b>14</b>	<b>381:44</b>	<b>.437</b>	<b>45-103</b>	<b>.395</b>	<b>30-76</b>	<b>.750</b>	<b>6</b>	<b>44</b>	<b>50</b>	<b>3.6</b>	<b>29</b>	<b>56</b>	<b>38</b>	<b>6</b>	<b>34</b>	<b>138</b>	<b>9.9</b>

### Player Averages

Games Played	Minutes/game	Points/game	FG Pct	3FG Pct	FT Pct	Rebounds/game	Assists/game	Turnovers/game	Assist/Turnover ratio	Steals/game	Blocks/game
14	27.3	9.9	43.7	39.5	75.0	3.6	4.0	2.7	1.5	2.4	0.4

### GARRAUD'S SEASON/CAREER GAME HIGHS

#### Minutes Played

Season: 34 vs. Northeastern (11/24/21)  
Career: 42 vs. UMass (11/29/20)

#### Free Throws Made

Season: 3 (3x), last vs. Sacred Heart (12/21/21)  
Career: 8 vs. Rider (11/25/18)

#### Blocks

Season: 2 vs. Holy Cross (11/13/21)  
Career: 3 at Virginia Tech (1/23/20)

#### Points

Season: 20 vs. No. 25 North Carolina (12/19/21)  
Career: 28 vs. Rider (11/25/18)

#### Rebounds

Season: 6 (2x), last at UMass (12/8/21)  
Career: 8 (2x), last vs. Dartmouth (12/29/18)

#### Double-Figure Scoring

Season: 6  
Career: 38

#### Field Goals Made

Season: 7 vs. No. 25 North Carolina (12/19/21)  
Career: 8 vs. Rider (11/25/18)

#### Assists

Season: 9 (2x), last vs. Sacred Heart (12/21/21)  
Career: 10 vs. VCU (11/24/19)

#### Double-Figure Rebounding

Season: N/A  
Career: Same

#### 3-Point Field Goals Made

Season: 5 vs. Syracuse (1/6/22)  
Career: 6 at Notre Dame (1/17/21)

#### Steals

Season: 6 at Boston University (11/17/21)  
Career: 6 (2x), last at Boston University (11/17/21)

#### Double-Doubles

Season: N/A  
Career: 1 (in points and assists)

### CAREER STATISTICS

SEASON	TEAM	GP-GS	MIN/AVG	Field Goals		3-Point		F-Throws		Rebounds				Scoring						
				FG-FGA	FG%	3FG-3FGA	3FG%	FT-FTA	FT%	OFF	DEF	TOT	AVG	PF-FO	A	TO	BLK	STL	PTS	AVG
2018-19	BC	30-22	720/24.0	83-230	.361	38-123	.309	39-49	.796	42	59	101	3.4	85-0	73	80	2	49	243	8.1
2019-20	BC	32-28	985/30.8	107-262	.408	56-147	.381	42-56	.750	13	82	95	3.0	86-4	119	93	10	62	312	9.8
2020-21	BC	19-19	588/31.0	47-143	.329	28-92	.304	16-16	1.000	12	35	47	2.5	53-1	58	56	7	39	138	7.3
2021-22	BC	14-14	382/27.3	45-103	.437	30-76	.395	18-24	.750	6	44	50	3.6	29-1	56	38	6	34	138	9.9
<b>TOTAL</b>		<b>95-83</b>	<b>2675/28.2</b>	<b>282-738</b>	<b>.382</b>	<b>152-438</b>	<b>.347</b>	<b>115-145</b>	<b>.793</b>	<b>73</b>	<b>220</b>	<b>293</b>	<b>3.1</b>	<b>253-6</b>	<b>306</b>	<b>267</b>	<b>25</b>	<b>184</b>	<b>831</b>	<b>8.7</b>





## Game Notes

# ANDREA DALEY

Guard-6-0-Fr.-HS-Miami, Fla.-Miami Country Day



### 2021-22 Season Highlights

- Scored four points in the first two games of the season.
- Has scored in four of six appearances.
- Blocked three shots and recorded three steals in a win over Holy Cross.
- Grabbed a personal-high four rebounds against Sacred Heart.



### GAME-BY-GAME STATS

Opponent	Date	GS	MIN	Total		3-Pointers		Free throws		Rebounds				PF	A	TO	BLK	STL	PTS	AVG
				FG-FGA	PCT	3FG-3FGA	PCT	FT-FTA	PCT	OFF	DEF	TOT	AVG							
Harvard	11/09/2021		05:38	2-2	1.000	0-0	.000	0-0	.000	0	2	2	2.0	1	0	0	0	0	4	4.0
Holy Cross	11/13/2021		15:58	2-4	.500	0-1	.000	0-0	.000	2	1	3	2.5	0	0	1	3	3	4	4.0
at Boston U.	11/17/2021		10:09	1-2	.500	0-0	.000	0-0	.000	1	1	2	2.3	1	0	0	0	0	2	3.3
Albany (NY)	11/28/2021		04:17	1-1	1.000	0-0	.000	0-0	.000	0	0	0	1.8	0	0	1	0	0	2	3.0
Sacred Heart	12/21/2021		14:30	0-0	.000	0-0	.000	0-0	.000	0	4	4	2.2	1	1	2	0	1	0	2.4
Syracuse	01/06/2022		02:25	0-1	.000	0-0	.000	0-2	.000	0	0	0	1.8	0	0	0	0	0	0	2.0
<b>Totals</b>		<b>0</b>	<b>52:58</b>	<b>6-10</b>	<b>.600</b>	<b>0-1</b>	<b>.000</b>	<b>0-2</b>	<b>.000</b>	<b>3</b>	<b>8</b>	<b>11</b>	<b>1.8</b>	<b>3</b>	<b>1</b>	<b>4</b>	<b>3</b>	<b>4</b>	<b>12</b>	<b>2.0</b>

### Player Averages

Games Played	Minutes/game	Points/game	FG Pct	3FG Pct	FT Pct	Rebounds/game	Assists/game	Turnovers/game	Assist/Turnover ratio	Steals/game	Blocks/game
6	8.8	2.0	60.0	0.0	0.0	1.8	0.2	0.7	0.3	0.7	0.5

### DALEY'S SEASON/CAREER GAME HIGHS

Minutes Played  
Season: 16 vs. Holy Cross (11/13/21)  
Career: Same

Free Throws Made  
Season: N/A  
Career: Same

Blocks  
Season: 3 vs. Holy Cross (11/13/21)  
Career: Same

Points  
Season: 4 (2x), last vs. Holy Cross (11/13/21)  
Career: Same

Rebounds  
Season: 4 vs. Sacred Heart (12/21/21)  
Career: Same

Double-Figure Scoring  
Season: N/A  
Career: Same

Field Goals Made  
Season: 2 (2x), last vs. Holy Cross (11/13/21)  
Career: Same

Assists  
Season: 1 vs. Sacred Heart (12/21/21)  
Career: Same

Double-Figure Rebounding  
Season: N/A  
Career: Same

3-Point Field Goals Made  
Season: N/A  
Career: Same

Steals  
Season: 3 vs. Holy Cross (11/13/21)  
Career: Same

Double-Doubles  
Season: N/A  
Career: Same

A -

### CAREER STATISTICS

SEASON	TEAM	GP-GS	MIN/AVG	Field Goals		3-Point		F-Throws		Rebounds				Scoring						
				FG-FGA	FG%	3FG-3FGA	3FG%	FT-FTA	FT%	OFF	DEF	TOT	AVG	PF-FO	A	TO	BLK	STL	PTS	AVG
2021-22	BC	6-0	53/8.8	6-10	.600	0-1	.000	0-2	.000	3	8	11	1.8	3-0	1	4	3	4	12	2.0
<b>TOTAL</b>		<b>6-0</b>	<b>53/8.8</b>	<b>6-10</b>	<b>.600</b>	<b>0-1</b>	<b>.000</b>	<b>0-2</b>	<b>.000</b>	<b>3</b>	<b>8</b>	<b>11</b>	<b>1.8</b>	<b>3-0</b>	<b>1</b>	<b>4</b>	<b>3</b>	<b>4</b>	<b>12</b>	<b>2.0</b>



## Women's Basketball

# CLARA FORD

Center-6-3-Sr.-3L-Vienna, Va.-George C. Marshall



### 2021-22 Season Highlights

- Played a season-high 10 minutes against VCU.
- Scored a season-high 10 points against Sacred Heart.
- Grabbed a season-best five rebounds vs. the Pioneers.
- Her two assists are a season best.



### GAME-BY-GAME STATS

Opponent	Date	GS	MIN	Total		3-Pointers		Free throws		Rebounds				PF	A	TO	BLK	STL	PTS	AVG
				FG-FGA	PCT	3FG-3FGA	PCT	FT-FTA	PCT	OFF	DEF	TOT	AVG							
Harvard	11/09/2021		05:30	1-3	.333	0-0	.000	0-0	.000	1	0	1	1.0	1	0	2	0	0	2	2.0
Holy Cross	11/13/2021		05:50	2-3	.667	0-0	.000	0-1	.000	1	0	1	1.0	3	2	1	0	0	4	3.0
at Boston U.	11/17/2021		01:07	0-0	.000	0-0	.000	0-0	.000	0	0	0	0.0	0	0	0	0	0	0	2.0
at Providence	11/20/2021		06:57	0-1	.000	0-0	.000	0-0	.000	0	3	3	1.3	0	0	0	0	0	0	1.5
Northeastern	11/24/2021		03:33	1-1	1.000	0-0	.000	0-0	.000	0	1	1	1.2	0	0	0	0	0	2	1.6
Albany (NY)	11/28/2021		04:45	0-2	.000	0-0	.000	0-0	.000	1	0	1	1.2	0	0	1	0	0	0	1.3
Penn St.	12/02/2021		00:37	0-0	.000	0-0	.000	0-0	.000	0	0	0	1.0	1	0	0	0	0	0	1.1
at VCU	12/05/2021		10:15	0-0	.000	0-0	.000	0-0	.000	1	1	2	1.1	0	0	0	0	0	0	1.0
at Massachusetts	12/08/2021		08:11	2-2	1.000	0-0	.000	0-0	.000	1	1	2	1.2	1	1	1	0	0	4	1.3
North Carolina	12/19/2021		02:34	1-2	.500	0-0	.000	0-1	.000	0	0	0	1.1	0	0	0	0	0	2	1.4
Sacred Heart	12/21/2021		09:52	3-4	.750	0-0	.000	4-5	.800	2	3	5	1.5	1	0	3	0	0	10	2.2
at Louisville	12/30/2021		01:31	0-0	.000	0-0	.000	0-0	.000	0	0	0	1.3	0	0	0	0	0	0	2.0
New Hampshire	01/01/2022		14:29	2-4	.500	0-0	.000	1-2	.500	1	1	2	1.4	2	1	2	0	0	5	2.2
Syracuse	01/06/2022		07:16	2-2	1.000	0-0	.000	3-4	.750	1	1	2	1.4	0	0	0	0	0	7	2.6
<b>Totals</b>		<b>0</b>	<b>82:25</b>	<b>14-24</b>	<b>.583</b>	<b>0-0</b>	<b>.000</b>	<b>8-13</b>	<b>.615</b>	<b>9</b>	<b>11</b>	<b>20</b>	<b>1.4</b>	<b>9</b>	<b>4</b>	<b>10</b>	<b>0</b>	<b>0</b>	<b>36</b>	<b>2.6</b>

### Player Averages

Games Played	Minutes/ game	Points/ game	FG Pct	3FG Pct	FT Pct	Rebounds/ game	Assists/ game	Turnovers/ game	Assist/Turnover ratio	Steals/ game	Blocks/ game
14	5.9	2.6	58.3	0.0	61.5	1.4	0.3	0.7	0.4	0.0	0.0

### FORD'S SEASON/CAREER GAME HIGHS

Minutes Played  
Season: 14 vs. New Hampshire (1/1/22)  
Career: 33 vs. UMass (11/29/20)

Free Throws Made  
Season: 4 vs. Sacred Heart (12/21/21)  
Career: 9 vs. Syracuse (12/20/20)

Blocks  
Season: N/A  
Career: 2 vs. UMass Lowell (11/5/19)

Points  
Season: 10 vs. Sacred Heart (12/21/21)  
Career: 19 vs. Syracuse (12/20/20)

Rebounds  
Season: 5 vs. Sacred Heart (12/21/21)  
Career: 16 vs. UMass (11/29/20)

Double-Figure Scoring  
Season: 1  
Career: 6

Field Goals Made  
Season: 3 vs. Sacred Heart (12/21/21)  
Career: 10 vs. Bryant (12/6/18)

Assists  
Season: 2 vs. Holy Cross (11/13/21)  
Career: 3 vs. Louisville (2/4/21)

Double-Figure Rebounding  
Season: N/A  
Career: 3

3-Point Field Goals Made  
Season: N/A  
Career: Same

Steals  
Season: N/A  
Career: 3 vs. Bryant (12/6/18)

Double-Doubles  
Season: N/A  
Career: 2

### CAREER STATISTICS

		Field Goals		3-Point		F-Throws		Rebounds				Scoring								
SEASON	TEAM	GP-GS	MIN/AVG	FG-FGA	FG%	3FG-3FGA	3FG%	FT-FTA	FT%	OFF	DEF	TOT	AVG	PF-FO	A	TO	BLK	STL	PTS	AVG
2018-19	BC	22-0	136/6.2	22-48	.458	0-0	.000	7-14	.500	22	22	44	2.0	14-0	1	13	1	6	51	2.3
2019-20	BC	20-0	69/3.4	5-17	.294	0-0	.000	11-18	.611	10	17	27	1.4	12-0	1	6	3	2	21	1.1
2020-21	BC	19-17	335/17.6	35-79	.443	0-1	.000	25-32	.781	50	56	106	5.6	32-1	10	24	4	6	95	5.0
2021-22	BC	14-0	82/5.9	14-24	.583	0-0	.000	8-13	.615	9	11	20	1.4	9-0	4	10	0	0	36	2.6
<b>TOTAL</b>		<b>75-17</b>	<b>622/8.3</b>	<b>76-168</b>	<b>.452</b>	<b>0-1</b>	<b>.000</b>	<b>51-77</b>	<b>.662</b>	<b>91</b>	<b>106</b>	<b>197</b>	<b>2.6</b>	<b>67-1</b>	<b>16</b>	<b>53</b>	<b>8</b>	<b>14</b>	<b>203</b>	<b>2.7</b>