



Officials: Denise Brooks, John Capolino, Dan Outlaw

North Florida - 72

Record: 4-2

NO.	Name	F	Min	FG			3P			FT			Rebounds			Fouls		TP	AS	TO	ST	Blocks		+/-
				M-A	M-A	M-A	OR	DR	TOT	PF	FD	BS	BA											
11	Jazz Bond	F	35:13	9-16	3-8	2-2	1	3	4	2	3	23	1	3	1	3	1	4	0	-7				
40	Emma Broermann	F	14:33	1-3	0-0	0-0	0	2	2	3	1	2	0	1	0	1	0	1	0	-4				
0	Jaida Bond	G	22:20	2-8	1-4	0-1	1	4	5	3	2	5	2	3	0	0	1	3						
3	Tiffany Tolbert	G	19:27	3-5	1-1	0-0	0	0	0	2	2	7	2	4	0	0	0	-2						
13	Rhetta Moore	G	36:51	12-16	5-7	0-0	0	1	1	2	2	29	3	2	1	0	0	-17						
22	Ally Knights		22:18	1-2	1-2	0-0	0	1	1	1	0	3	2	1	2	0	0	-11						
1	Nubia Benedith		23:09	1-3	1-3	0-0	0	0	0	3	2	3	1	0	0	0	0	-12						
4	Erin Jones		09:00	0-1	0-1	0-0	0	2	2	0	1	0	0	0	0	0	0	-4						
24	Tatiana Thompson		16:10	0-2	0-1	0-0	2	2	4	4	1	0	1	0	0	0	1	-3						
23	Summah Evans		00:59	0-1	0-0	0-0	0	0	0	1	0	0	0	0	0	0	0	-3						
Team							0	3	3			0		1										
<b>Totals</b>				29-57	12-27	2-3	4	18	22	21	14	72	12	15	4	5	2	-12						

Technical Fouls::NONE

Shooting By Period		
1st FG%	5-14	35.7%
3PT%	4-7	57.1%
FT%	0-0	0%
2nd FG%	9-15	60.0%
3PT%	4-8	50.0%
FT%	0-1	0%
3rd FG%	9-14	64.3%
3PT%	4-6	66.7%
FT%	0-0	0%
4th FG%	6-14	42.9%
3PT%	0-6	0.0%
FT%	2-2	100%
GM FG%	29-57	50.9%
3PT%	12-27	44.4%
FT%	2-3	66.7%

Dead Ball Rebounds: 0, 0

Clemson - 84

Record: 3-2

NO.	Name	F	Min	FG			3P			FT			Rebounds			Fouls		TP	AS	TO	ST	Blocks		+/-
				M-A	M-A	M-A	OR	DR	TOT	PF	FD	BS	BA											
5	Amari Robinson	F	27:08	6-10	1-3	1-2	2	3	5	1	1	14	3	1	1	0	1	11						
40	Latrese Saine	F	16:55	2-2	0-0	0-0	1	1	2	1	0	4	0	2	1	1	0	9						
00	Delicia Washington	G	26:52	10-18	0-0	3-4	4	7	11	3	7	23	3	3	5	0	2	9						
10	Gabby Elliott	G	33:34	6-11	2-4	2-4	0	2	2	2	2	16	2	1	0	0	1	17						
23	Kiara Lewis	G	34:07	4-10	0-1	6-8	1	2	3	3	6	14	5	1	0	0	0	5						
1	Eno Inyang		15:42	1-3	0-0	2-2	2	2	4	2	1	4	0	1	0	1	1	-2						
2	Daisha Bradford		21:09	3-6	1-1	2-2	2	4	6	1	1	9	2	2	0	0	0	2						
4	Weronika Hipp		04:00	0-1	0-1	0-0	0	0	0	0	0	0	0	0	0	0	0	1						
12	Hannah Hank		16:08	0-1	0-1	0-0	2	1	3	1	3	0	1	0	0	0	0	3						
30	Madi Ott		01:31	0-1	0-1	0-0	0	0	0	0	0	0	0	0	0	0	0	2						
3	MaKayla Elmore		02:54	0-0	0-0	0-0	0	0	0	0	0	0	0	0	0	0	0	3						
Team							1	3	4			0		0										
<b>Totals</b>				32-63	4-12	16-22	15	25	40	14	21	84	16	11	7	2	5	12						

Technical Fouls::NONE

Shooting By Period		
1st FG%	6-14	42.9%
3PT%	2-5	40.0%
FT%	3-6	50%
2nd FG%	8-20	40.0%
3PT%	1-3	33.3%
FT%	3-3	100%
3rd FG%	9-14	64.3%
3PT%	0-0	0.0%
FT%	1-3	33.3%
4th FG%	9-15	60.0%
3PT%	1-4	25.0%
FT%	9-10	90%
GM FG%	32-63	50.8%
3PT%	4-12	33.3%
FT%	16-22	72.7%

Dead Ball Rebounds: 4, 0

	UNF	CLE
Biggest lead	7 (2 <sup>nd</sup> 4:22)	12 (4 <sup>th</sup> 0:21)
Best Scoring Run	8 (3 <sup>rd</sup> 0:05)	8 (2 <sup>nd</sup> 2:13)
Lead Changes	14	
Times Tied	9	
Time with Lead	12:14	23:18

	UNF	CLE
Points from		
Turnovers	15	18
Paint	32	46
Second Chance	5	18
Fast Breaks	15	12
Bench	6	13

	Period by Period Scoring				
	1st	2nd	3rd	4th	TOT
UNF	14	22	22	14	72
CLE	17	20	19	28	84



**North Florida at Clemson**

11/24/21 Littlejohn Coliseum, Clemson  
2021-22 Women's Basketball

Officials: Denise Brooks, John Capolino, Dan Outlaw

**Period 1**

**Quarter Starters:**

<b>CLE</b>	00 Washington D	5 Robinson A	10 Elliott G	23 Lewis K	40 Saine L
<b>UNF</b>	0 Bond J	3 Tolbert T	11 Bond J	13 Moore R	40 Broermann E

Game Time	CLE	Score	Diff	UNF
10:00	40 SAINE L jumpball won			11 BOND J jumpball lost
09:51	40 SAINE L foul offensive (1 - 1)			40 BROERMANN E foul drawn (1)
09:51	40 SAINE L turnover offensive (1)			
09:29				3 TOLBERT T turnover bad pass (1)
09:09	23 LEWIS K 2pt FG from turnover outside the paint, jump shot missed			
09:07	00 WASHINGTON D offensive rebound (1)			
09:03	00 WASHINGTON D 2pt FG from turnover second chance in the paint, jump shot made (2)	<b>2-0</b>	<b>2</b>	
08:54	00 WASHINGTON D steal (1)			3 TOLBERT T turnover lost ball (2)
08:46	00 WASHINGTON D 2pt FG from turnover in the paint, layup missed			
08:44				13 MOORE R defensive rebound (1)
08:34				0 BOND J 2pt FG in the paint, layup blocked
08:34	40 SAINE L block (1)			
08:34	defensive rebound (2)			
08:34	00 WASHINGTON D substitution out			
08:34	40 SAINE L substitution out			
08:34	1 INYANG E substitution in			
08:34	2 BRADFORD D substitution in			
08:13	10 ELLIOTT G 2pt FG outside the paint, jump shot blocked			
08:13				11 BOND J block (1)
08:09				0 BOND J defensive rebound (1)
08:05				11 BOND J turnover travel (1)
07:53	2 BRADFORD D turnover travel (1)			
07:53	10 ELLIOTT G substitution out			
07:53	00 WASHINGTON D substitution in			
07:53	5 ROBINSON A substitution out			
07:53	23 LEWIS K substitution out			
07:53	4 HIPPO W substitution in			
07:53	12 HANK H substitution in			
07:44				40 BROERMANN E 2pt FG from turnover in the paint, layup missed
07:41	1 INYANG E defensive rebound (1)			
07:28	4 HIPPO W 3pt FG , jump shot missed			
07:25				40 BROERMANN E defensive rebound (1)
07:23		<b>2-3</b>	<b>-1</b>	11 BOND J 3pt FG fast break, jump shot made (3)
07:23				13 MOORE R assist (1)
07:21	Timeout 30 Sec			
07:21	4 HIPPO W substitution out			
07:21	30 OTT M substitution in			
07:21				3 TOLBERT T substitution out
07:21				22 KNIGHTS A substitution in
07:01	12 HANK H 3pt FG , jump shot missed			



**North Florida at Clemson**

11/24/21 Littlejohn Coliseum, Clemson  
2021-22 Women's Basketball

**Game Time:** 1:00 PM  
**Game Duration:** 1:59  
**Attendance:** 423

**Officials:** Denise Brooks, John Capolino, Dan Outlaw

Game Time	CLE	Score	Diff	UNF
06:59	1 INYANG E offensive rebound (2)			
06:59	1 INYANG E foul drawn (1)			40 BROERMANN E foul shooting (1 - 1)
06:59	1 INYANG E free throw 1 - 2 made (1)	<b>3-3</b>	<b>0</b>	
06:59	1 INYANG E free throw 2 - 2 made (2)	<b>4-3</b>	<b>1</b>	
06:40				0 BOND J 3pt FG , jump shot missed
06:37	12 HANK H defensive rebound (1)			
06:22	00 WASHINGTON D 2pt FG outside the paint, jump shot missed			
06:20				defensive rebound (4)
06:19				40 BROERMANN E substitution out
06:19				1 BENEDETH N substitution in
06:06	12 HANK H foul drawn (1)			0 BOND J foul offensive (1 - 2)
06:06				0 BOND J turnover offensive (1)
06:06				0 BOND J substitution out
06:06				4 JONES E substitution in
05:53	30 OTT M 3pt FG from turnover, jump shot missed			
05:51				defensive rebound (5)
05:50	00 WASHINGTON D substitution out			
05:50	30 OTT M substitution out			
05:50	10 ELLIOTT G substitution in			
05:50	23 LEWIS K substitution in			
05:44	12 HANK H foul personal (1 - 2)			4 JONES E foul drawn (1)
05:21				11 BOND J 3pt FG , jump shot missed
05:18	23 LEWIS K defensive rebound (1)			
05:15	10 ELLIOTT G foul offensive (1 - 3)			13 MOORE R foul drawn (1)
05:15	10 ELLIOTT G turnover offensive (1)			
05:15	1 INYANG E substitution out			
05:15	12 HANK H substitution out			
05:15	5 ROBINSON A substitution in			
05:15	40 SAINE L substitution in			
04:47		<b>4-6</b>	<b>-2</b>	13 MOORE R 3pt FG from turnover, jump shot made (3)
04:47				1 BENEDETH N assist (1)
04:28	10 ELLIOTT G 2pt FG outside the paint, jump shot made (2)	<b>6-6</b>	<b>0</b>	
04:14				11 BOND J 2pt FG outside the paint, jump shot missed
04:12	10 ELLIOTT G defensive rebound (1)			
04:00	5 ROBINSON A turnover bad pass (1)			22 KNIGHTS A steal (1)
03:53		<b>6-9</b>	<b>-3</b>	13 MOORE R 3pt FG fast break from turnover, jump shot made (6)
03:53				22 KNIGHTS A assist (1)
03:36	10 ELLIOTT G 2pt FG outside the paint, jump shot missed			
03:34	40 SAINE L offensive rebound (1)			
03:24	10 ELLIOTT G 3pt FG second chance, jump shot made (5)	<b>9-9</b>	<b>0</b>	
03:24	23 LEWIS K assist (1)			
03:04		<b>9-11</b>	<b>-2</b>	11 BOND J 2pt FG in the paint, layup made (5)
02:53	5 ROBINSON A 3pt FG , jump shot made (3)	<b>12-11</b>	<b>1</b>	
02:53	2 BRADFORD D assist (1)			
02:31				11 BOND J 3pt FG , jump shot missed
02:29	23 LEWIS K defensive rebound (2)			
02:25	10 ELLIOTT G foul drawn (1)			11 BOND J foul shooting (1 - 3)
02:25	2 BRADFORD D substitution out			



**North Florida at Clemson**

11/24/21 Littlejohn Coliseum, Clemson  
2021-22 Women's Basketball

Game Time: 1:00 PM

Game Duration: 1:59

Attendance: 423

Officials: Denise Brooks, John Capolino, Dan Outlaw

Game Time	CLE	Score	Diff	UNF
02:25	5 ROBINSON A substitution out			
02:25	40 SAINÉ L substitution out			
02:25	00 WASHINGTON D substitution in			
02:25	1 INYANG E substitution in			
02:25	3 ELMORE M substitution in			
02:25	10 ELLIOTT G free throw fast break 1 - 2 missed			
02:25	offensive dead ball rebound (1)			
02:25				11 BOND J substitution out
02:25				24 THOMPSON T substitution in
02:23	10 ELLIOTT G free throw fast break 2 - 2 missed			
02:12				4 JONES E defensive rebound (1)
02:12				22 KNIGHTS A turnover travel (1)
02:12				22 KNIGHTS A substitution out
02:12				3 TOLBERT T substitution in
01:45	23 LEWIS K 2pt FG from turnover in the paint, layup made (2)	<b>14-11</b>	<b>3</b>	
01:19				3 TOLBERT T 2pt FG in the paint, layup missed
01:16				24 THOMPSON T offensive rebound (1)
01:16				24 THOMPSON T 2pt FG second chance in the paint, layup blocked
01:16	1 INYANG E block (1)			
01:11				24 THOMPSON T offensive rebound (2)
01:10		<b>14-14</b>	<b>0</b>	1 BENEDITH N 3pt FG second chance, jump shot made (3)
00:58	00 WASHINGTON D foul drawn (1)			1 BENEDITH N foul personal (1 - 4)
00:58				1 BENEDITH N substitution out
00:58				23 EVANS S substitution in
00:56	23 LEWIS K foul drawn (1)			23 EVANS S foul shooting (1 - 5)
00:56	23 LEWIS K free throw 1 - 2 missed			
00:56	offensive dead ball rebound (2)			
00:56	23 LEWIS K free throw 2 - 2 made (3)	<b>15-14</b>	<b>1</b>	
00:56	1 INYANG E substitution out			
00:56	40 SAINÉ L substitution in			
00:36	00 WASHINGTON D steal (2)			3 TOLBERT T turnover bad pass (3)
00:31	23 LEWIS K 2pt FG fast break from turnover in the paint, layup made (5)	<b>17-14</b>	<b>3</b>	
00:31	00 WASHINGTON D assist (1)			
00:03				23 EVANS S 2pt FG in the paint, jump shot missed
00:00	00 WASHINGTON D defensive rebound (2)			
<b>END OF PERIOD</b>				
<b>CLE 17-14 UNF</b>				



**North Florida at Clemson**

11/24/21 Littlejohn Coliseum, Clemson  
2021-22 Women's Basketball

Game Time: 1:00 PM  
Game Duration: 1:59  
Attendance: 423

Officials: Denise Brooks, John Capolino, Dan Outlaw

**North Florida - 14**

NO.	Name	F	Min	FG			Rebounds			Fouls		TP	AS	TO	ST	Blocks		+/-
				M-A	3P	FT	OR	DR	TOT	PF	FD					BS	BA	
11	Jazz Bond	F	07:35	2-5	1-3	0-0	0	0	0	1	0	5	0	1	0	1	0	-1
40	Emma Broermann	F	03:41	0-1	0-0	0-0	0	1	1	1	1	0	0	0	0	0	0	-1
0	Jaida Bond	G	03:54	0-2	0-1	0-0	0	1	1	1	0	0	0	1	0	0	1	-1
3	Tiffany Tolbert	G	04:51	0-1	0-0	0-0	0	0	0	0	0	0	0	3	0	0	0	-1
13	Rhetta Moore	G	10:00	2-2	2-2	0-0	0	1	1	0	1	6	1	0	0	0	0	-3
22	Ally Knights		05:09	0-0	0-0	0-0	0	0	0	0	0	0	1	1	1	0	0	-2
1	Nubia Benedith		05:20	1-1	1-1	0-0	0	0	0	1	0	3	1	0	0	0	0	1
4	Erin Jones		06:06	0-0	0-0	0-0	0	1	1	0	1	0	0	0	0	0	0	-2
24	Tatiana Thompson		02:25	0-1	0-0	0-0	2	0	2	0	0	0	0	0	0	0	1	-2
23	Summah Evans		00:59	0-1	0-0	0-0	0	0	0	1	0	0	0	0	0	0	0	-3
Team							0	2	2			0		0				
<b>Totals</b>				5-14	4-7	0-0	2	6	8	5	3	14	3	6	1	1	2	-3

Shooting By Period		
1st FG%	5-14	35.7%
3PT%	4-7	57.1%
FT%	0-0	0%
GM FG%	5-14	35.7%
3PT%	4-7	57.1%
FT%	0-0	0.0%

Dead Ball Rebounds: 0, 0

Technical Fouls::NONE

**Clemson - 17**

NO.	Name	F	Min	FG			Rebounds			Fouls		TP	AS	TO	ST	Blocks		+/-
				M-A	3P	FT	OR	DR	TOT	PF	FD					BS	BA	
5	Amari Robinson	F	04:57	1-1	1-1	0-0	0	0	0	0	0	3	0	1	0	0	0	2
40	Latrese Saine	F	05:12	0-0	0-0	0-0	1	0	1	1	0	0	0	1	0	1	0	4
00	Delicia Washington	G	05:54	1-3	0-0	0-0	1	1	2	0	1	2	1	0	2	0	0	3
10	Gabby Elliott	G	07:57	2-4	1-1	0-2	0	1	1	1	1	5	0	1	0	0	1	4
23	Kiara Lewis	G	07:57	2-3	0-0	1-2	0	2	2	0	1	5	1	0	0	0	0	4
1	Eno Inyang		04:48	0-0	0-0	2-2	1	1	2	0	1	2	0	0	0	1	0	-1
2	Daisha Bradford		06:09	0-0	0-0	0-0	0	0	0	0	0	0	1	1	0	0	0	-1
4	Weronika Hipp		00:32	0-1	0-1	0-0	0	0	0	0	0	0	0	0	0	0	0	-3
12	Hannah Hank		02:38	0-1	0-1	0-0	0	1	1	1	1	0	0	0	0	0	0	-1
30	Madi Ott		01:31	0-1	0-1	0-0	0	0	0	0	0	0	0	0	0	0	0	2
3	MaKayla Elmore		02:25	0-0	0-0	0-0	0	0	0	0	0	0	0	0	0	0	0	2
Team							0	1	1			0		0				
<b>Totals</b>				6-14	2-5	3-6	3	7	10	3	5	17	3	4	2	2	1	3

Shooting By Period		
1st FG%	6-14	42.9%
3PT%	2-5	40.0%
FT%	3-6	50%
GM FG%	6-14	42.9%
3PT%	2-5	40.0%
FT%	3-6	50.0%

Dead Ball Rebounds: 2, 0

Technical Fouls::NONE

	UNF	CLE
Biggest lead	3 (1 <sup>st</sup> 3:53)	3 (1 <sup>st</sup> 1:45)
Best Scoring Run	3 (1 <sup>st</sup> 7:23)	5 (1 <sup>st</sup> 1:45)
Lead Changes	4	
Times Tied	4	
Time with Lead	01:23	06:31

Points from	UNF	CLE
Turnovers	6	6
Paint	2	6
Second Chance	3	7
Fast Breaks	6	2
Bench	3	2

	Period by Period Scoring				
	1st	2nd	3rd	4th	TOT
UNF	14	22	22	14	72
CLE	17	20	19	28	84



**North Florida at Clemson**

11/24/21 Littlejohn Coliseum, Clemson  
2021-22 Women's Basketball

Officials: Denise Brooks, John Capolino, Dan Outlaw

**Period 2**

**Quarter Starters:**

<b>CLE</b>	00 Washington D	2 Bradford D	3 Elmore M	23 Lewis K	40 Saine L
<b>UNF</b>	0 Bond J	3 Tolbert T	11 Bond J	13 Moore R	40 Broermann E

Game Time	CLE	Score	Diff	UNF
10:00	10 ELLIOTT G substitution out			
10:00	2 BRADFORD D substitution in			
10:00				4 JONES E substitution out
10:00				23 EVANS S substitution out
10:00				24 THOMPSON T substitution out
10:00				0 BOND J substitution in
10:00				11 BOND J substitution in
10:00				40 BROERMANN E substitution in
09:47		<b>17-16</b>	<b>1</b>	13 MOORE R 2pt FG in the paint, layup made (8)
09:31	00 WASHINGTON D 2pt FG outside the paint, jump shot made (4)	<b>19-16</b>	<b>3</b>	
09:31	00 WASHINGTON D foul drawn (2)			40 BROERMANN E foul shooting (2 - 1)
09:31				3 TOLBERT T substitution out
09:31				40 BROERMANN E substitution out
09:31				22 KNIGHTS A substitution in
09:31				24 THOMPSON T substitution in
09:31	00 WASHINGTON D free throw 1 - 1 made (5)	<b>20-16</b>	<b>4</b>	
09:31	3 ELMORE M substitution out			
09:31	12 HANK H substitution in			
09:14		<b>20-19</b>	<b>1</b>	0 BOND J 3pt FG , jump shot made (3)
09:14				11 BOND J assist (1)
09:03	00 WASHINGTON D 2pt FG outside the paint, jump shot made (7)	<b>22-19</b>	<b>3</b>	
08:44				11 BOND J turnover travel (2)
08:17	23 LEWIS K 2pt FG from turnover in the paint, layup missed			
08:13				11 BOND J defensive rebound (1)
08:08				0 BOND J 3pt FG , jump shot missed
08:04				11 BOND J offensive rebound (2)
08:03		<b>22-21</b>	<b>1</b>	11 BOND J 2pt FG second chance in the paint, jump shot made (7)
07:42	23 LEWIS K 3pt FG , jump shot missed			
07:40				0 BOND J defensive rebound (2)
07:36		<b>22-24</b>	<b>-2</b>	11 BOND J 3pt FG fast break, jump shot made (10)
07:36				0 BOND J assist (1)
07:33	Timeout 30 Sec			
07:33	2 BRADFORD D substitution out			
07:33	40 SAINE L substitution out			
07:33	1 INYANG E substitution in			
07:33	10 ELLIOTT G substitution in			
07:20	1 INYANG E 2pt FG in the paint, layup made (4)	<b>24-24</b>	<b>0</b>	
07:20	23 LEWIS K assist (2)			
06:56				13 MOORE R 3pt FG , jump shot missed
06:54	1 INYANG E defensive rebound (3)			
06:38	00 WASHINGTON D 2pt FG outside the paint, jump shot missed			



**North Florida at Clemson**

11/24/21 Littlejohn Coliseum, Clemson  
2021-22 Women's Basketball

**Game Time:** 1:00 PM  
**Game Duration:** 1:59  
**Attendance:** 423

**Officials:** Denise Brooks, John Capolino, Dan Outlaw

Game Time	CLE	Score	Diff	UNF
06:36				0 BOND J defensive rebound (3)
06:30	1 INYANG E foul personal (1 - 1)			24 THOMPSON T foul drawn (1)
06:30	12 HANK H substitution out			
06:30	5 ROBINSON A substitution in			
06:30				13 MOORE R substitution out
06:30				1 BENEDITH N substitution in
06:20				0 BOND J substitution out
06:20				13 MOORE R substitution in
06:15		<b>24-26</b>	<b>-2</b>	11 BOND J 2pt FG in the paint, layup made (12)
05:42	23 LEWIS K 2pt FG in the paint, jump shot missed			
05:41				defensive rebound (13)
05:42	1 INYANG E substitution out			
05:42	40 SAINÉ L substitution in			
05:42				13 MOORE R substitution out
05:42				0 BOND J substitution in
05:25		<b>24-28</b>	<b>-4</b>	0 BOND J 2pt FG in the paint, layup made (5)
05:25	00 WASHINGTON D foul shooting (1 - 2)			0 BOND J foul drawn (1)
05:25				0 BOND J free throw 1 - 1 missed
05:25	40 SAINÉ L defensive rebound (2)			
05:13	00 WASHINGTON D foul drawn (3)			0 BOND J foul personal (2 - 2)
05:13				0 BOND J substitution out
05:13				3 TOLBERT T substitution in
04:57	5 ROBINSON A 3pt FG , jump shot missed			
04:55	23 LEWIS K offensive rebound (3)			
04:53	23 LEWIS K 2pt FG second chance in the paint, layup missed			
04:52	00 WASHINGTON D offensive rebound (3)			
04:38	00 WASHINGTON D 2pt FG second chance outside the paint, jump shot missed			
04:36				24 THOMPSON T defensive rebound (3)
04:22		<b>24-31</b>	<b>-7</b>	11 BOND J 3pt FG , jump shot made (15)
04:22				24 THOMPSON T assist (1)
03:54	23 LEWIS K foul drawn (2)			24 THOMPSON T foul personal (1 - 3)
03:50	23 LEWIS K substitution out			
03:50	2 BRADFORD D substitution in			
03:50				24 THOMPSON T substitution out
03:50				13 MOORE R substitution in
03:47	5 ROBINSON A 2pt FG in the paint, layup made (5)	<b>26-31</b>	<b>-5</b>	
03:47	10 ELLIOTT G assist (1)			
03:35	5 ROBINSON A steal (1)			3 TOLBERT T turnover lost ball (4)
03:32	00 WASHINGTON D 2pt FG fast break from turnover in the paint, layup made (9)	<b>28-31</b>	<b>-3</b>	
03:32	5 ROBINSON A assist (1)			
03:28	00 WASHINGTON D foul personal (2 - 3)			1 BENEDITH N foul drawn (1)
03:28	00 WASHINGTON D substitution out			
03:28	4 HIPP W substitution in			
03:28				3 TOLBERT T substitution out
03:28				4 JONES E substitution in
03:04				13 MOORE R 2pt FG outside the paint, jump shot missed
03:02	2 BRADFORD D defensive rebound (1)			
02:55	2 BRADFORD D 2pt FG outside the paint, jump shot missed			



**North Florida at Clemson**

11/24/21 Littlejohn Coliseum, Clemson  
2021-22 Women's Basketball

**Game Time:** 1:00 PM

**Game Duration:** 1:59

**Attendance:** 423

**Officials:** Denise Brooks, John Capolino, Dan Outlaw

Game Time	CLE	Score	Diff	UNF
02:54	2 BRADFORD D offensive rebound (2)			
02:47	10 ELLIOTT G 2pt FG second chance in the paint, layup missed			
02:44	5 ROBINSON A offensive rebound (1)			
02:43	5 ROBINSON A 2pt FG second chance in the paint, layup made (7)	<b>30-31</b>	<b>-1</b>	
02:26				11 BOND J 2pt FG in the paint, layup missed
02:24	5 ROBINSON A defensive rebound (2)			
02:13	40 SAINE L 2pt FG in the paint, layup made (2)	<b>32-31</b>	<b>1</b>	
02:13	5 ROBINSON A assist (2)			
01:58		<b>32-34</b>	<b>-2</b>	22 KNIGHTS A 3pt FG , jump shot made (3)
01:58				13 MOORE R assist (2)
01:56				Timeout 30 Sec
01:56	40 SAINE L substitution out			
01:56	1 INYANG E substitution in			
01:56				11 BOND J substitution out
01:56				24 THOMPSON T substitution in
01:40	2 BRADFORD D 3pt FG , jump shot made (3)	<b>35-34</b>	<b>1</b>	
01:40	10 ELLIOTT G assist (2)			
01:26				4 JONES E 3pt FG , jump shot missed
01:25	2 BRADFORD D defensive rebound (3)			
01:01	5 ROBINSON A 2pt FG in the paint, jump shot missed			
00:58				4 JONES E defensive rebound (2)
00:51	10 ELLIOTT G foul personal (2 - 4)			13 MOORE R foul drawn (2)
00:51		<b>35-36</b>	<b>-1</b>	13 MOORE R 2pt FG in the paint, layup made (10)
00:33	2 BRADFORD D 2pt FG in the paint, layup missed			
00:33	2 BRADFORD D offensive rebound (4)			
00:33	2 BRADFORD D foul drawn (1)			24 THOMPSON T foul shooting (2 - 4)
00:33				4 JONES E substitution out
00:33				22 KNIGHTS A substitution out
00:33				3 TOLBERT T substitution in
00:33				11 BOND J substitution in
00:27	2 BRADFORD D free throw 1 - 2 made (4)	<b>36-36</b>	<b>0</b>	
00:27	2 BRADFORD D free throw 2 - 2 made (5)	<b>37-36</b>	<b>1</b>	
00:27	1 INYANG E substitution out			
00:27	12 HANK H substitution in			
00:15				1 BENEDITH N 3pt FG , jump shot missed
00:11	5 ROBINSON A defensive rebound (3)			
00:01	2 BRADFORD D 2pt FG in the paint, layup missed			
00:00				24 THOMPSON T defensive rebound (4)
<b>END OF PERIOD</b>				
<b>CLE 37-36 UNF</b>				





**North Florida at Clemson**

11/24/21 Littlejohn Coliseum, Clemson  
2021-22 Women's Basketball

Game Time: 1:00 PM  
Game Duration: 1:59  
Attendance: 423

Officials: Denise Brooks, John Capolino, Dan Outlaw

**North Florida - 22**

NO.	Name	F	Min	FG			Rebounds			Fouls		TP	AS	TO	ST	Blocks		+/-	
				M-A	3P	FT	OR	DR	TOT	PF	FD					BS	BA		
11	Jazz Bond	F	08:38	4-5	2-2	0-0	1	1	2	0	0	10	1	1	0	0	0	3	
40	Emma Broermann	F	00:29	0-0	0-0	0-0	0	0	0	1	0	0	0	0	0	0	0	0	
0	Jaida Bond	G	04:09	2-3	1-2	0-1	0	2	2	1	1	5	1	0	0	0	0	5	
3	Tiffany Tolbert	G	02:48	0-0	0-0	0-0	0	0	0	0	0	0	0	1	0	0	0	-3	
13	Rhetta Moore	G	07:58	2-4	0-1	0-0	0	0	0	0	1	4	1	0	0	0	0	-3	
23	Summah Evans		00:00	0-0	0-0	0-0	0	0	0	0	0	0	0	0	0	0	0	0	
22	Ally Knights		08:57	1-1	1-1	0-0	0	0	0	0	0	3	0	0	0	0	0	4	
24	Tatiana Thompson		07:37	0-0	0-0	0-0	0	2	2	2	1	0	1	0	0	0	0	7	
1	Nubia Benedith		06:30	0-1	0-1	0-0	0	0	0	0	1	0	0	0	0	0	0	-1	
4	Erin Jones		02:54	0-1	0-1	0-0	0	1	1	0	0	0	0	0	0	0	0	-2	
Team							0	1	1			0		0					
<b>Totals</b>				9-15	4-8	0-1	1	7	8	4	4	22	4	2	0	0	0	0	2

Shooting By Period		
2 <sup>nd</sup> FG%	9-15	60.0%
3PT%	4-8	50.0%
FT%	0-1	0%
GM FG%	9-15	60.0%
3PT%	4-8	50.0%
FT%	0-1	0.0%

Dead Ball Rebounds: 0, 0

Technical Fouls::NONE

**Clemson - 20**

NO.	Name	F	Min	FG			Rebounds			Fouls		TP	AS	TO	ST	Blocks		+/-	
				M-A	3P	FT	OR	DR	TOT	PF	FD					BS	BA		
5	Amari Robinson	F	06:30	2-4	0-1	0-0	1	2	3	0	0	4	2	0	1	0	0	1	
40	Latrese Saine	F	06:13	1-1	0-0	0-0	0	1	1	0	0	2	0	0	0	0	0	-5	
00	Delicia Washington	G	06:32	3-5	0-0	1-1	1	0	1	2	2	7	0	0	0	0	0	-6	
10	Gabby Elliott	G	07:33	0-1	0-0	0-0	0	0	0	1	0	0	2	0	0	0	0	3	
23	Kiara Lewis	G	06:10	0-4	0-1	0-0	1	0	1	0	1	0	1	0	0	0	0	-10	
3	MaKayla Elmore		00:29	0-0	0-0	0-0	0	0	0	0	0	0	0	0	0	0	0	1	
2	Daisha Bradford		06:17	1-4	1-1	2-2	2	2	4	0	1	5	0	0	0	0	0	3	
12	Hannah Hank		03:28	0-0	0-0	0-0	0	0	0	0	0	0	0	0	0	0	0	-4	
1	Eno Inyang		03:20	1-1	0-0	0-0	0	1	1	1	0	2	0	0	0	0	0	3	
4	Weronika Hipp		03:28	0-0	0-0	0-0	0	0	0	0	0	0	0	0	0	0	0	4	
Team							0	0	0			0		0					
<b>Totals</b>				8-20	1-3	3-3	5	6	11	4	4	20	5	0	1	0	0	0	-2

Shooting By Period		
2 <sup>nd</sup> FG%	8-20	40.0%
3PT%	1-3	33.3%
FT%	3-3	100%
GM FG%	8-20	40.0%
3PT%	1-3	33.3%
FT%	3-3	100.0%

Dead Ball Rebounds: 0, 0

Technical Fouls::NONE

	UNF	CLE
Biggest lead	7 (2 <sup>nd</sup> 4:22)	4 (2 <sup>nd</sup> 9:31)
Best Scoring Run	7(2 <sup>nd</sup> 4:22)	8(2 <sup>nd</sup> 2:13)
Lead Changes	6	
Times Tied	2	
Time with Lead	05:00	03:42

Points from	UNF	CLE
Turnovers	0	2
Paint	10	10
Second Chance	2	4
Fast Breaks	3	2
Bench	3	7

	Period by Period Scoring				
	1st	2nd	3rd	4th	TOT
UNF	14	22	22	14	72
CLE	17	20	19	28	84



**North Florida at Clemson**

11/24/21 Littlejohn Coliseum, Clemson  
2021-22 Women's Basketball

Game Time: 1:00 PM  
Game Duration: 1:59  
Attendance: 423

Officials: Denise Brooks, John Capolino, Dan Outlaw

**North Florida - 36**

NO.	Name	F	Min	FG			Rebounds			Fouls		TP	AS	TO	ST	Blocks		+/-
				M-A	M-A	M-A	OR	DR	TOT	PF	FD					BS	BA	
11	Jazz Bond	F	16:13	6-10	3-5	0-0	1	1	2	1	0	15	1	2	0	1	0	2
40	Emma Broermann	F	04:10	0-1	0-0	0-0	0	1	1	2	1	0	0	0	0	0	0	-1
0	Jaida Bond	G	08:03	2-5	1-3	0-1	0	3	3	2	1	5	1	1	0	0	1	4
3	Tiffany Tolbert	G	07:39	0-1	0-0	0-0	0	0	0	0	0	0	0	4	0	0	0	-4
13	Rhetta Moore	G	17:58	4-6	2-3	0-0	0	1	1	0	2	10	2	0	0	0	0	-6
22	Ally Knights		14:06	1-1	1-1	0-0	0	0	0	0	0	3	1	1	1	0	0	2
1	Nubia Benedith		11:50	1-2	1-2	0-0	0	0	0	1	1	3	1	0	0	0	0	0
4	Erin Jones		09:00	0-1	0-1	0-0	0	2	2	0	1	0	0	0	0	0	0	-4
24	Tatiana Thompson		10:02	0-1	0-0	0-0	2	2	4	2	1	0	1	0	0	0	1	5
23	Summah Evans		00:59	0-1	0-0	0-0	0	0	0	1	0	0	0	0	0	0	0	-3
Team							0	3	3			0		0				
<b>Totals</b>				14-29	8-15	0-1	3	13	16	9	7	36	7	8	1	1	2	-1

Shooting By Period		
1 <sup>st</sup> FG%	5-14	35.7%
3PT%	4-7	57.1%
FT%	0-0	0%
2 <sup>nd</sup> FG%	9-15	60.0%
3PT%	4-8	50.0%
FT%	0-1	0%
GM FG%	14-29	48.3%
3PT%	8-15	53.3%
FT%	0-1	0.0%

Dead Ball Rebounds: 0, 0

Technical Fouls::NONE

**Clemson - 37**

NO.	Name	F	Min	FG			Rebounds			Fouls		TP	AS	TO	ST	Blocks		+/-
				M-A	M-A	M-A	OR	DR	TOT	PF	FD					BS	BA	
5	Amari Robinson	F	11:27	3-5	1-2	0-0	1	2	3	0	0	7	2	1	1	0	0	3
40	Latrese Saine	F	11:25	1-1	0-0	0-0	1	1	2	1	0	2	0	1	0	1	0	-1
00	Delicia Washington	G	12:26	4-8	0-0	1-1	2	1	3	2	3	9	1	0	2	0	0	-3
10	Gabby Elliott	G	15:30	2-5	1-1	0-2	0	1	1	2	1	5	2	1	0	0	1	7
23	Kiara Lewis	G	14:07	2-7	0-1	1-2	1	2	3	0	2	5	2	0	0	0	0	-6
1	Eno Inyang		08:08	1-1	0-0	2-2	1	2	3	1	1	4	0	0	0	1	0	2
2	Daisha Bradford		12:26	1-4	1-1	2-2	2	2	4	0	1	5	1	1	0	0	0	2
4	Weronika Hipp		04:00	0-1	0-1	0-0	0	0	0	0	0	0	0	0	0	0	0	1
12	Hannah Hank		06:06	0-1	0-1	0-0	0	1	1	1	1	0	0	0	0	0	0	-5
30	Madi Ott		01:31	0-1	0-1	0-0	0	0	0	0	0	0	0	0	0	0	0	2
3	MaKayla Elmore		02:54	0-0	0-0	0-0	0	0	0	0	0	0	0	0	0	0	0	3
Team							0	1	1			0		0				
<b>Totals</b>				14-34	3-8	6-9	8	13	21	7	9	37	8	4	3	2	1	1

Shooting By Period		
1 <sup>st</sup> FG%	6-14	42.9%
3PT%	2-5	40.0%
FT%	3-6	50%
2 <sup>nd</sup> FG%	8-20	40.0%
3PT%	1-3	33.3%
FT%	3-3	100%
GM FG%	14-34	41.2%
3PT%	3-8	37.5%
FT%	6-9	66.7%

Dead Ball Rebounds: 2, 0

Technical Fouls::NONE

	UNF	CLE
Biggest lead	7 (2 <sup>nd</sup> 4:22)	4 (2 <sup>nd</sup> 9:31)
Best Scoring Run	7(2 <sup>nd</sup> 4:22)	8(2 <sup>nd</sup> 2:13)
Lead Changes	10	
Times Tied	6	
Time with Lead	06:23	10:26

Points from	UNF	CLE
Turnovers	6	8
Paint	12	16
Second Chance	5	11
Fast Breaks	9	4
Bench	6	9

	Period by Period Scoring				
	1st	2nd	3rd	4th	TOT
UNF	14	22	22	14	72
CLE	17	20	19	28	84



**North Florida at Clemson**

11/24/21 Littlejohn Coliseum, Clemson  
2021-22 Women's Basketball

Game Time: 1:00 PM

Game Duration: 1:59

Attendance: 423

Officials: Denise Brooks, John Capolino, Dan Outlaw

**Period 3**

**Quarter Starters:**

<b>CLE</b>	5 Robinson A	10 Elliott G	00 Washington D	23 Lewis K	1 Inyang E
<b>UNF</b>	3 Tolbert T	11 Bond J	13 Moore R	0 Bond J	40 Broermann E

Game Time	CLE	Score	Diff	UNF
10:00	2 BRADFORD D substitution out			
10:00	4 HIPPIE W substitution out			
10:00	12 HANK H substitution out			
10:00	00 WASHINGTON D substitution in			
10:00	23 LEWIS K substitution in			
10:00	1 INYANG E substitution in			
10:00				1 BENEDITH N substitution out
10:00				24 THOMPSON T substitution out
10:00				0 BOND J substitution in
10:00				40 BROERMANN E substitution in
09:47	00 WASHINGTON D foul drawn (4)			3 TOLBERT T foul personal (1 - 1)
09:30	00 WASHINGTON D 2pt FG outside the paint, jump shot missed			
09:27				40 BROERMANN E defensive rebound (2)
09:12		<b>37-39</b>	<b>-2</b>	3 TOLBERT T 3pt FG , jump shot made (3)
09:12				0 BOND J assist (2)
08:57	1 INYANG E 2pt FG in the paint, layup blocked			
08:57				11 BOND J block (2)
08:57	offensive rebound (22)			
08:54	23 LEWIS K turnover lost ball (1)			13 MOORE R steal (1)
08:48		<b>37-41</b>	<b>-4</b>	11 BOND J 2pt FG fast break from turnover in the paint, layup made (17)
08:48				13 MOORE R assist (3)
08:23	23 LEWIS K 2pt FG in the paint, layup made (7)	<b>39-41</b>	<b>-2</b>	
08:00				11 BOND J 3pt FG , jump shot missed
07:58	00 WASHINGTON D defensive rebound (4)			
07:51	00 WASHINGTON D 2pt FG in the paint, jump shot blocked			
07:51				11 BOND J block (3)
07:48				11 BOND J defensive rebound (3)
07:44		<b>39-44</b>	<b>-5</b>	13 MOORE R 3pt FG , jump shot made (13)
07:20	00 WASHINGTON D 2pt FG in the paint, layup made (11)	<b>41-44</b>	<b>-3</b>	
06:54				0 BOND J 2pt FG in the paint, layup missed
06:52				0 BOND J offensive rebound (4)
06:49				40 BROERMANN E turnover 3 seconds (1)
06:49	10 ELLIOTT G substitution out			
06:49	1 INYANG E substitution out			
06:49	2 BRADFORD D substitution in			
06:49	12 HANK H substitution in			
06:34	23 LEWIS K 2pt FG from turnover in the paint, jump shot made (9)	<b>43-44</b>	<b>-1</b>	
06:15		<b>43-46</b>	<b>-3</b>	13 MOORE R 2pt FG in the paint, layup made (15)
05:57	00 WASHINGTON D 2pt FG outside the paint, jump shot missed			
05:55	5 ROBINSON A offensive rebound (4)			
05:55	5 ROBINSON A foul drawn (1)			40 BROERMANN E foul shooting (3 - 2)
05:54				3 TOLBERT T substitution out



**North Florida at Clemson**

11/24/21 Littlejohn Coliseum, Clemson  
2021-22 Women's Basketball

Game Time: 1:00 PM

Game Duration: 1:59

Attendance: 423

Officials: Denise Brooks, John Capolino, Dan Outlaw

Game Time	CLE	Score	Diff	UNF
05:54				40 BROERMANN E substitution out
05:54				22 KNIGHTS A substitution in
05:54				24 THOMPSON T substitution in
05:54	5 ROBINSON A free throw 1 - 2 missed			
05:54	offensive dead ball rebound (3)			
05:54	5 ROBINSON A free throw 2 - 2 made (8)	<b>44-46</b>	<b>-2</b>	
05:34	5 ROBINSON A foul personal (1 - 1)			11 BOND J foul drawn (1)
05:30		<b>44-48</b>	<b>-4</b>	11 BOND J 2pt FG in the paint, layup made (19)
05:18	5 ROBINSON A 2pt FG in the paint, layup made (10)	<b>46-48</b>	<b>-2</b>	
05:18	00 WASHINGTON D assist (2)			
05:00				0 BOND J 2pt FG outside the paint, jump shot missed
04:55	00 WASHINGTON D defensive rebound (5)			
04:53	jump ball situation			
04:53	00 WASHINGTON D turnover lost ball (1)			22 KNIGHTS A steal (2)
04:53	Timeout media			
04:53	5 ROBINSON A substitution out			
04:53	10 ELLIOTT G substitution in			
04:39				13 MOORE R 3pt FG from turnover, jump shot missed
04:36	00 WASHINGTON D defensive rebound (6)			
04:24	10 ELLIOTT G 2pt FG in the paint, layup made (7)	<b>48-48</b>	<b>0</b>	
04:17		<b>48-50</b>	<b>-2</b>	13 MOORE R 2pt FG fast break outside the paint, jump shot made (17)
03:51	12 HANK H foul drawn (2)			24 THOMPSON T foul personal (3 - 3)
03:51	2 BRADFORD D substitution out			
03:51	40 SAINE L substitution in			
03:51				24 THOMPSON T substitution out
03:51				1 BENEDETH N substitution in
03:49	00 WASHINGTON D 2pt FG in the paint, layup made (13)	<b>50-50</b>	<b>0</b>	
03:49	23 LEWIS K assist (3)			
03:27	23 LEWIS K foul personal (1 - 2)			0 BOND J foul drawn (2)
03:24				0 BOND J turnover bad pass (2)
03:09	10 ELLIOTT G 2pt FG from turnover outside the paint, jump shot made (9)	<b>52-50</b>	<b>2</b>	
02:46	00 WASHINGTON D steal (3)			13 MOORE R turnover bad pass (1)
02:43	00 WASHINGTON D 2pt FG fast break from turnover in the paint, layup made (15)	<b>54-50</b>	<b>4</b>	
02:43	00 WASHINGTON D foul drawn (5)			1 BENEDETH N foul shooting (2 - 4)
02:43	00 WASHINGTON D free throw fast break 1 - 1 missed			
02:40				11 BOND J defensive rebound (4)
02:29	00 WASHINGTON D foul personal (3 - 3)			11 BOND J foul drawn (2)
02:26	00 WASHINGTON D substitution out			
02:26	2 BRADFORD D substitution in			
02:26				22 KNIGHTS A substitution out
02:26				3 TOLBERT T substitution in
02:11				13 MOORE R 2pt FG outside the paint, jump shot missed
02:09	2 BRADFORD D defensive rebound (5)			
02:03	40 SAINE L 2pt FG in the paint, layup made (4)	<b>56-50</b>	<b>6</b>	
02:03	2 BRADFORD D assist (2)			
01:49		<b>56-53</b>	<b>3</b>	13 MOORE R 3pt FG , jump shot made (20)
01:49				3 TOLBERT T assist (1)



### North Florida at Clemson

11/24/21 Littlejohn Coliseum, Clemson  
2021-22 Women's Basketball

Game Time: 1:00 PM

Game Duration: 1:59

Attendance: 423

Officials: Denise Brooks, John Capolino, Dan Outlaw

Game Time	CLE	Score	Diff	UNF
01:18	40 SAIN E L substitution out			
01:18	1 INYANG E substitution in			
01:15	2 BRADFORD D foul offensive (1 - 4)			3 TOLBERT T foul drawn (1)
01:15	2 BRADFORD D turnover offensive (2)			
00:48		<b>56-55</b>	<b>1</b>	13 MOORE R 2pt FG from turnover in the paint, layup made (22)
00:34	1 INYANG E 2pt FG in the paint, layup missed			
00:32	1 INYANG E offensive rebound (4)			
00:34	1 INYANG E foul offensive (2 - 5)			3 TOLBERT T foul drawn (2)
00:34	1 INYANG E turnover offensive (1)			
00:34	1 INYANG E substitution out			
00:34	5 ROBINSON A substitution in			
00:05		<b>56-58</b>	<b>-2</b>	13 MOORE R 3pt FG from turnover, jump shot made (25)
00:05				3 TOLBERT T assist (2)
<b>END OF PERIOD</b>				
<b>CLE 56-58 UNF</b>				



**North Florida at Clemson**

11/24/21 Littlejohn Coliseum, Clemson  
2021-22 Women's Basketball

Game Time: 1:00 PM  
Game Duration: 1:59  
Attendance: 423

Officials: Denise Brooks, John Capolino, Dan Outlaw

**North Florida - 22**

NO.	Name	F	Min	FG			Rebounds			Fouls		TP	AS	TO	ST	Blocks		+/-
				M-A	3P	FT	OR	DR	TOT	PF	FD					BS	BA	
11	Jazz Bond	F	10:00	2-3	0-1	0-0	0	2	2	0	2	4	0	0	0	2	0	3
40	Emma Broermann	F	04:06	0-0	0-0	0-0	0	1	1	1	0	0	0	1	0	0	4	
0	Jaida Bond	G	10:00	0-2	0-0	0-0	1	0	1	0	1	0	1	1	0	0	3	
3	Tiffany Tolbert	G	06:32	1-1	1-1	0-0	0	0	0	1	2	3	2	0	0	0	10	
13	Rhett Moore	G	10:00	6-8	3-4	0-0	0	0	0	0	0	15	1	1	1	0	3	
22	Ally Knights		03:28	0-0	0-0	0-0	0	0	0	0	0	0	0	0	1	0	-7	
24	Tatiana Thompson		02:03	0-0	0-0	0-0	0	0	0	1	0	0	0	0	0	0	-1	
1	Nubia Benedith		03:51	0-0	0-0	0-0	0	0	0	1	0	0	0	0	0	0	0	
Team							0	0	0		0		0					
<b>Totals</b>				9-14	4-6	0-0	1	3	4	4	5	22	4	3	2	2	0	3

Shooting By Period		
3rd FG%	9-14	64.3%
3PT%	4-6	66.7%
FT%	0-0	0%
GM FG%	9-14	64.3%
3PT%	4-6	66.7%
FT%	0-0	0.0%

Dead Ball Rebounds: 0, 0

Technical Fouls: NONE

**Clemson - 19**

NO.	Name	F	Min	FG			Rebounds			Fouls		TP	AS	TO	ST	Blocks		+/-
				M-A	3P	FT	OR	DR	TOT	PF	FD					BS	BA	
5	Amari Robinson	F	05:41	1-1	0-0	1-2	1	0	1	1	1	3	0	0	0	0	0	-6
40	Latrese Saine	F	02:33	1-1	0-0	0-0	0	0	0	0	0	2	0	0	0	0	5	
00	Delicia Washington	G	07:34	3-6	0-0	0-1	0	3	3	1	2	6	1	1	1	0	3	
10	Gabby Elliott	G	08:04	2-2	0-0	0-0	0	0	0	0	0	4	0	0	0	0	-4	
23	Kiara Lewis	G	10:00	2-2	0-0	0-0	0	0	0	1	0	4	1	1	0	0	-3	
4	Weronika Hipp		00:00	0-0	0-0	0-0	0	0	0	0	0	0	0	0	0	0	0	
1	Eno Inyang		03:55	0-2	0-0	0-0	1	0	1	1	0	0	0	1	0	0	-6	
2	Daisha Bradford		05:24	0-0	0-0	0-0	0	1	1	1	0	0	1	1	0	0	-5	
12	Hannah Hank		06:49	0-0	0-0	0-0	0	0	0	0	1	0	0	0	0	0	1	
Team							1	0	1		0		0					
<b>Totals</b>				9-14	0-0	1-3	3	4	7	5	4	19	3	4	1	0	2	-3

Shooting By Period		
3rd FG%	9-14	64.3%
3PT%	0-0	0.0%
FT%	1-3	33.3%
GM FG%	9-14	64.3%
3PT%	0-0	0.0%
FT%	1-3	33.3%

Dead Ball Rebounds: 1, 0

Technical Fouls: NONE

	UNF	CLE
Biggest lead	5 (3 <sup>rd</sup> 7:44)	6 (3 <sup>rd</sup> 2:03)
Best Scoring Run	8 (3 <sup>rd</sup> 0:05)	8 (3 <sup>rd</sup> 2:03)
Lead Changes	3	
Times Tied	2	
Time with Lead	05:21	03:22

Points from	UNF	CLE
Turnovers	7	6
Paint	8	16
Second Chance	0	1
Fast Breaks	4	2
Bench	0	0

	Period by Period Scoring				
	1st	2nd	3rd	4th	TOT
UNF	14	22	22	14	72
CLE	17	20	19	28	84



**North Florida at Clemson**

11/24/21 Littlejohn Coliseum, Clemson  
2021-22 Women's Basketball

Game Time: 1:00 PM

Game Duration: 1:59

Attendance: 423

Officials: Denise Brooks, John Capolino, Dan Outlaw

**Period 4**

**Quarter Starters:**

<b>CLE</b>	2 Bradford D	5 Robinson A	10 Elliott G	12 Hank H	23 Lewis K
<b>UNF</b>	1 Benedith N	3 Tolbert T	13 Moore R	24 Thompson T	40 Broermann E

Game Time	CLE	Score	Diff	UNF
10:00				0 BOND J substitution out
10:00				11 BOND J substitution out
10:00				24 THOMPSON T substitution in
10:00				40 BROERMANN E substitution in
09:36	23 LEWIS K 2pt FG outside the paint, jump shot missed			
09:35	12 HANK H offensive rebound (2)			
09:35	12 HANK H foul drawn (3)			3 TOLBERT T foul personal (2 - 1)
09:30	5 ROBINSON A 2pt FG second chance in the paint, jump shot made (12)	<b>58-58</b>	<b>0</b>	
09:30	12 HANK H assist (1)			
09:11				24 THOMPSON T 3pt FG , jump shot missed
09:09	2 BRADFORD D defensive rebound (6)			
09:01	23 LEWIS K foul drawn (3)			24 THOMPSON T foul shooting (4 - 2)
09:00				24 THOMPSON T substitution out
09:00				11 BOND J substitution in
09:00	23 LEWIS K free throw 1 - 2 missed			
09:00	offensive dead ball rebound (4)			
09:00	23 LEWIS K free throw 2 - 2 made (10)	<b>59-58</b>	<b>1</b>	
08:38				3 TOLBERT T 2pt FG outside the paint, jump shot missed
08:36	5 ROBINSON A defensive rebound (5)			
08:31	2 BRADFORD D 2pt FG fast break in the paint, layup made (7)	<b>61-58</b>	<b>3</b>	
08:06		<b>61-60</b>	<b>1</b>	3 TOLBERT T 2pt FG in the paint, layup made (5)
07:51	5 ROBINSON A 2pt FG in the paint, jump shot blocked			
07:51				40 BROERMANN E block (1)
07:47	12 HANK H offensive rebound (3)			
07:38	2 BRADFORD D 2pt FG second chance in the paint, layup made (9)	<b>63-60</b>	<b>3</b>	
07:22				Timeout 30 Sec
07:22	2 BRADFORD D substitution out			
07:22	12 HANK H substitution out			
07:22	00 WASHINGTON D substitution in			
07:22	1 INYANG E substitution in			
07:22				3 TOLBERT T substitution out
07:22				13 MOORE R substitution out
07:22				0 BOND J substitution in
07:22				22 KNIGHTS A substitution in
07:06				turnover shot clock (12)
06:46	10 ELLIOTT G 3pt FG from turnover, jump shot missed			
06:44				22 KNIGHTS A defensive rebound (1)
06:26				0 BOND J 3pt FG , jump shot missed
06:26	defensive rebound (33)			
06:15	00 WASHINGTON D foul drawn (6)			0 BOND J foul personal (3 - 3)
06:15				1 BENEDITH N substitution out
06:15				13 MOORE R substitution in



**North Florida at Clemson**

11/24/21 Littlejohn Coliseum, Clemson  
2021-22 Women's Basketball

**Game Time:** 1:00 PM  
**Game Duration:** 1:59  
**Attendance:** 423

**Officials:** Denise Brooks, John Capolino, Dan Outlaw

Game Time	CLE	Score	Diff	UNF
05:59	00 WASHINGTON D 2pt FG outside the paint, jump shot made (17)	<b>65-60</b>	<b>5</b>	
05:33				40 BROERMANN E 2pt FG outside the paint, jump shot missed
05:31	00 WASHINGTON D defensive rebound (7)			
05:25	00 WASHINGTON D 2pt FG in the paint, layup made (19)	<b>67-60</b>	<b>7</b>	
05:13		<b>67-62</b>	<b>5</b>	40 BROERMANN E 2pt FG in the paint, layup made (2)
05:13				22 KNIGHTS A assist (2)
04:51	5 ROBINSON A 3pt FG , jump shot missed			
04:43				0 BOND J defensive rebound (5)
04:42	00 WASHINGTON D steal (4)			0 BOND J turnover bad pass (3)
04:20	10 ELLIOTT G 3pt FG from turnover, jump shot missed			
04:18	00 WASHINGTON D offensive rebound (8)			
04:05	00 WASHINGTON D 2pt FG from turnover second chance outside the paint, jump shot blocked			
04:05				11 BOND J block (4)
04:02	00 WASHINGTON D offensive rebound (9)			
03:54	5 ROBINSON A 2pt FG from turnover second chance in the paint, jump shot made (14)	<b>69-62</b>	<b>7</b>	
03:54	00 WASHINGTON D assist (3)			
03:51		<b>69-64</b>	<b>5</b>	13 MOORE R 2pt FG fast break in the paint, layup made (27)
03:43	23 LEWIS K foul drawn (4)			22 KNIGHTS A foul personal (1 - 4)
03:43	Timeout media			
03:43	1 INYANG E substitution out			
03:43	40 SAINE L substitution in			
03:43				0 BOND J substitution out
03:43				22 KNIGHTS A substitution out
03:43				40 BROERMANN E substitution out
03:43				1 BENEDETH N substitution in
03:43				3 TOLBERT T substitution in
03:43				24 THOMPSON T substitution in
03:29	10 ELLIOTT G foul drawn (2)			1 BENEDETH N foul shooting (3 - 5)
03:29	10 ELLIOTT G free throw 1 - 2 made (10)	<b>70-64</b>	<b>6</b>	
03:29	10 ELLIOTT G free throw 2 - 2 made (11)	<b>71-64</b>	<b>7</b>	
03:14		<b>71-66</b>	<b>5</b>	3 TOLBERT T 2pt FG in the paint, jump shot made (7)
02:53	00 WASHINGTON D turnover bad pass (2)			
02:30				1 BENEDETH N 3pt FG from turnover, jump shot missed
02:28	00 WASHINGTON D defensive rebound (10)			
02:16	10 ELLIOTT G 3pt FG , jump shot made (14)	<b>74-66</b>	<b>8</b>	
02:16	5 ROBINSON A assist (3)			
02:14				Timeout 30 Sec
01:57	40 SAINE L steal (1)			11 BOND J turnover bad pass (3)
01:52	40 SAINE L turnover bad pass (2)			11 BOND J steal (1)
01:52				11 BOND J 3pt FG from turnover, jump shot missed
01:52	defensive rebound (38)			
01:45	00 WASHINGTON D turnover bad pass (3)			
01:33		<b>74-68</b>	<b>6</b>	13 MOORE R 2pt FG from turnover in the paint, layup made (29)
01:20	10 ELLIOTT G 2pt FG fast break in the paint, layup made (16)	<b>76-68</b>	<b>8</b>	
01:20	23 LEWIS K assist (4)			
01:06	00 WASHINGTON D steal (5)			13 MOORE R turnover lost ball (2)
01:06	23 LEWIS K foul drawn (5)			13 MOORE R foul personal (1 - 6)





**North Florida at Clemson**

11/24/21 Littlejohn Coliseum, Clemson  
2021-22 Women's Basketball

**Game Time:** 1:00 PM

**Game Duration:** 1:59

**Attendance:** 423

**Officials:** Denise Brooks, John Capolino, Dan Outlaw

Game Time	CLE	Score	Diff	UNF
01:05				3 TOLBERT T substitution out
01:05				22 KNIGHTS A substitution in
01:05	23 LEWIS K free throw 1 - 2 made (11)	<b>77-68</b>	<b>9</b>	
01:05	23 LEWIS K free throw 2 - 2 made (12)	<b>78-68</b>	<b>10</b>	
00:51		<b>78-70</b>	<b>8</b>	11 BOND J 2pt FG in the paint, layup made (21)
00:51	Timeout 30 Sec			
00:45	23 LEWIS K foul drawn (6)			13 MOORE R foul personal (2 - 7)
00:45	23 LEWIS K free throw 1 - 2 made (13)	<b>79-70</b>	<b>9</b>	
00:45	23 LEWIS K free throw 2 - 2 made (14)	<b>80-70</b>	<b>10</b>	
00:45	00 WASHINGTON D substitution out			
00:45	40 SAINÉ L substitution out			
00:45	2 BRADFORD D substitution in			
00:45	12 HANK H substitution in			
00:38	23 LEWIS K foul shooting (2 - 1)			11 BOND J foul drawn (3)
00:38	12 HANK H substitution out			
00:38	00 WASHINGTON D substitution in			
00:38				24 THOMPSON T substitution out
00:38				0 BOND J substitution in
00:38		<b>80-71</b>	<b>9</b>	11 BOND J free throw 1 - 2 made (22)
00:38		<b>80-72</b>	<b>8</b>	11 BOND J free throw 2 - 2 made (23)
00:33	00 WASHINGTON D 2pt FG fast break in the paint, layup made (21)	<b>82-72</b>	<b>10</b>	
00:33	23 LEWIS K assist (5)			
00:26	23 LEWIS K foul personal (3 - 2)			1 BENEDETH N foul drawn (2)
00:26	2 BRADFORD D substitution out			
00:26	12 HANK H substitution in			
00:22				22 KNIGHTS A 3pt FG , jump shot missed
00:22	00 WASHINGTON D defensive rebound (11)			
00:21	00 WASHINGTON D foul drawn (7)			11 BOND J foul personal (2 - 8)
00:21	00 WASHINGTON D free throw 1 - 2 made (22)	<b>83-72</b>	<b>11</b>	
00:21	00 WASHINGTON D free throw 2 - 2 made (23)	<b>84-72</b>	<b>12</b>	
00:21	00 WASHINGTON D substitution out			
00:21	2 BRADFORD D substitution in			
00:21				Timeout 60 Sec
00:14				11 BOND J 3pt FG , jump shot missed
00:12	10 ELLIOTT G defensive rebound (2)			
<b>END OF GAME</b>				
<b>CLE 84-72 UNF</b>				



**North Florida at Clemson**

11/24/21 Littlejohn Coliseum, Clemson  
2021-22 Women's Basketball

Game Time: 1:00 PM  
Game Duration: 1:59  
Attendance: 423

Officials: Denise Brooks, John Capolino, Dan Outlaw

**North Florida - 14**

NO.	Name	F	Min	FG		3P		FT		Rebounds			Fouls		TP	AS	TO	ST	Blocks		+/-	
				M-A	M-A	M-A	M-A	OR	DR	TOT	PF	FD	BS	BA								
11	Jazz Bond	F	09:00	1-3	0-2	2-2	0	0	0	1	1	4	0	1	1	1	0	0	0	1	0	-12
40	Emma Broermann	F	06:17	1-2	0-0	0-0	0	0	0	0	0	2	0	0	0	0	0	0	1	0	-7	
0	Jaida Bond	G	04:17	0-1	0-1	0-0	0	1	1	1	0	0	0	0	1	0	0	0	0	0	-4	
3	Tiffany Tolbert	G	05:16	2-3	0-0	0-0	0	0	0	1	0	4	0	0	0	0	0	0	0	0	-8	
13	Rhetta Moore	G	08:53	2-2	0-0	0-0	0	0	0	2	0	4	0	1	0	0	0	0	0	-14		
24	Tatiana Thompson		04:05	0-1	0-1	0-0	0	0	0	1	0	0	0	0	0	0	0	0	0	0	-7	
22	Ally Knights		04:44	0-1	0-1	0-0	0	1	1	1	0	0	0	1	0	0	0	0	0	0	-6	
1	Nubia Benedith		07:28	0-1	0-1	0-0	0	0	0	1	1	0	0	0	0	0	0	0	0	0	-12	
Team										0	0	0				1						
<b>Totals</b>				6-14	0-6	2-2	0	2	2	8	2	14	1	4	1	2	0	0	0	0	-14	

Shooting By Period		
4 <sup>th</sup> FG%	6-14	42.9%
3PT%	0-6	0.0%
FT%	2-2	100%
GM FG%	6-14	42.9%
3PT%	0-6	0.0%
FT%	2-2	100.0%

Dead Ball Rebounds: 0, 0

Technical Fouls::NONE

**Clemson - 28**

NO.	Name	F	Min	FG		3P		FT		Rebounds			Fouls		TP	AS	TO	ST	Blocks		+/-
				M-A	M-A	M-A	M-A	OR	DR	TOT	PF	FD	BS	BA							
5	Amari Robinson	F	10:00	2-4	0-1	0-0	0	1	1	0	0	4	1	0	0	0	0	0	0	1	14
40	Latrese Saine	F	02:57	0-0	0-0	0-0	0	0	0	0	0	0	0	0	1	1	1	0	0	5	
00	Delicia Washington	G	06:52	3-4	0-0	2-2	2	3	5	0	2	8	1	2	2	0	1	9	0	9	
10	Gabby Elliott	G	10:00	2-4	1-3	2-2	0	1	1	0	1	7	0	0	0	0	0	0	0	14	
23	Kiara Lewis	G	10:00	0-1	0-0	5-6	0	0	0	2	4	5	2	0	0	0	0	0	0	14	
1	Eno Inyang		03:39	0-0	0-0	0-0	0	0	0	0	0	0	0	0	0	0	0	0	0	2	
2	Daisha Bradford		03:19	2-2	0-0	0-0	0	1	1	0	0	4	0	0	0	0	0	0	0	5	
12	Hannah Hank		03:13	0-0	0-0	0-0	2	0	2	0	1	0	1	0	0	0	0	0	0	7	
Team										0	2	2				0					
<b>Totals</b>				9-15	1-4	9-10	4	8	12	2	8	28	5	3	3	0	2	14			

Shooting By Period		
4 <sup>th</sup> FG%	9-15	60.0%
3PT%	1-4	25.0%
FT%	9-10	90%
GM FG%	9-15	60.0%
3PT%	1-4	25.0%
FT%	9-10	90.0%

Dead Ball Rebounds: 1, 0

Technical Fouls::NONE

	UNF	CLE
Biggest lead	2 (4 <sup>th</sup> 9:36)	12 (4 <sup>th</sup> 0:21)
Best Scoring Run	2(4 <sup>th</sup> 8:06)	6(4 <sup>th</sup> 5:25)
Lead Changes	1	
Times Tied	1	
Time with Lead	00:06	09:00

Points from	UNF	CLE
Turnovers	2	4
Paint	12	14
Second Chance	0	6
Fast Breaks	2	6
Bench	0	4

	Period by Period Scoring				
	1st	2nd	3rd	4th	TOT
UNF	14	22	22	14	72
CLE	17	20	19	28	84



**North Florida at Clemson**

11/24/21 Littlejohn Coliseum, Clemson  
2021-22 Women's Basketball

Game Time: 1:00 PM  
Game Duration: 1:59  
Attendance: 423

Officials: Denise Brooks, John Capolino, Dan Outlaw

**North Florida - 36**

NO.	Name	F	Min	FG	3P	FT	Rebounds			Fouls		TP	AS	TO	ST	Blocks		+/-
				M-A	M-A	M-A	OR	DR	TOT	PF	FD					BS	BA	
11	Jazz Bond	F	19:00	3-6	0-3	2-2	0	2	2	1	3	8	0	1	1	3	0	-9
40	Emma Broermann	F	10:23	1-2	0-0	0-0	0	1	1	1	0	2	0	1	0	1	0	-3
0	Jaida Bond	G	14:17	0-3	0-1	0-0	1	1	2	1	1	0	1	2	0	0	0	-1
3	Tiffany Tolbert	G	11:48	3-4	1-1	0-0	0	0	0	2	2	7	2	0	0	0	0	2
13	Rhett Moore	G	18:53	8-10	3-4	0-0	0	0	0	2	0	19	1	2	1	0	0	-11
22	Ally Knights		08:12	0-1	0-1	0-0	0	1	1	1	0	0	1	0	1	0	0	-13
24	Tatiana Thompson		06:08	0-1	0-1	0-0	0	0	0	2	0	0	0	0	0	0	0	-8
1	Nubia Benedith		11:19	0-1	0-1	0-0	0	0	0	2	1	0	0	0	0	0	0	-12
Team							0	0	0			0		1				
<b>Totals</b>				15-28	4-12	2-2	1	5	6	12	7	36	5	7	3	4	0	-11

Shooting By Period		
3 <sup>rd</sup> FG%	9-14	64.3%
3PT%	4-6	66.7%
FT%	0-0	0%
4 <sup>th</sup> FG%	6-14	42.9%
3PT%	0-6	0.0%
FT%	2-2	100%
GM FG%	15-28	53.6%
3PT%	4-12	33.3%
FT%	2-2	100.0%

Dead Ball Rebounds: 0, 0

Technical Fouls::NONE

**Clemson - 47**

NO.	Name	F	Min	FG	3P	FT	Rebounds			Fouls		TP	AS	TO	ST	Blocks		+/-
				M-A	M-A	M-A	OR	DR	TOT	PF	FD					BS	BA	
5	Amari Robinson	F	15:41	3-5	0-1	1-2	1	1	2	1	1	7	1	0	0	0	1	8
40	Latrese Saine	F	05:30	1-1	0-0	0-0	0	0	0	0	0	2	0	1	1	0	0	10
00	Delicia Washington	G	14:26	6-10	0-0	2-3	2	6	8	1	4	14	2	3	3	0	2	12
10	Gabby Elliott	G	18:04	4-6	1-3	2-2	0	1	1	0	1	11	0	0	0	0	0	10
23	Kiara Lewis	G	20:00	2-3	0-0	5-6	0	0	0	3	4	9	3	1	0	0	0	11
4	Weronika Hipp		00:00	0-0	0-0	0-0	0	0	0	0	0	0	0	0	0	0	0	0
1	Eno Inyang		07:34	0-2	0-0	0-0	1	0	1	1	0	0	0	1	0	0	1	-4
2	Daisha Bradford		08:43	2-2	0-0	0-0	0	2	2	1	0	4	1	1	0	0	0	0
12	Hannah Hank		10:02	0-0	0-0	0-0	2	0	2	0	2	0	1	0	0	0	0	8
Team							1	2	3			0		0				
<b>Totals</b>				18-29	1-4	10-13	7	12	19	7	12	47	8	7	4	0	4	11

Shooting By Period		
3 <sup>rd</sup> FG%	9-14	64.3%
3PT%	0-0	0.0%
FT%	1-3	33.3%
4 <sup>th</sup> FG%	9-15	60.0%
3PT%	1-4	25.0%
FT%	9-10	90%
GM FG%	18-29	62.1%
3PT%	1-4	25.0%
FT%	10-13	76.9%

Dead Ball Rebounds: 2, 0

Technical Fouls::NONE

	UNF	CLE
Biggest lead	5 (3 <sup>rd</sup> 7:44)	12 (4 <sup>th</sup> 0:21)
Best Scoring Run	8(3 <sup>rd</sup> 0:05)	8(3 <sup>rd</sup> 2:03)
Lead Changes	4	
Times Tied	3	
Time with Lead	05:51	12:22

Points from	UNF	CLE
Turnovers	9	10
Paint	20	30
Second Chance	0	7
Fast Breaks	6	8
Bench	0	4

	Period by Period Scoring				
	1st	2nd	3rd	4th	TOT
UNF	14	22	22	14	72
CLE	17	20	19	28	84



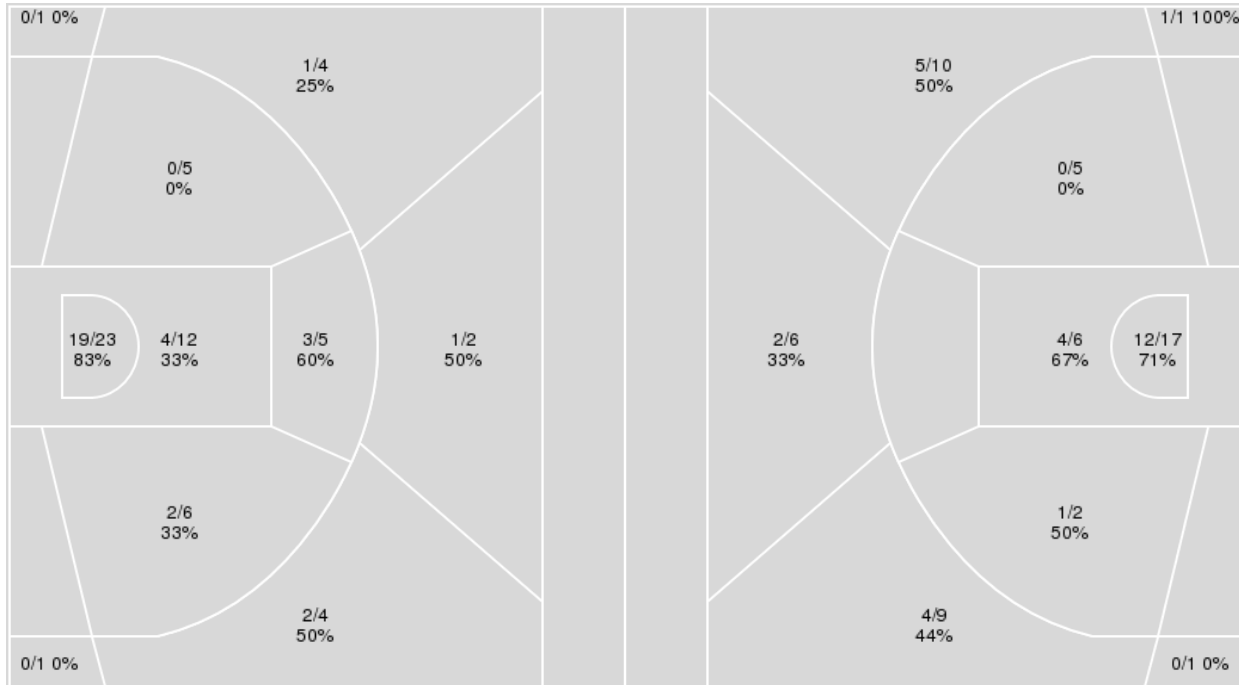
**Officials:** Denise Brooks, John Capolino, Dan Outlaw

{ Players => All; } FG Types => All; Results => All;

{ Players => All; } FG Types => All; Results => All;

**Clemson**

**North Florida**



Clemson	M/A	%
Field Goals	32/63	51
2 Points	28/51	55
3 Points	4/12	33
Free Throws	16/22	73

North Florida	M/A	%
Field Goals	29/57	51
2 Points	17/30	57
3 Points	12/27	44
Free Throws	2/3	67



**North Florida at Clemson**

11/24/21 Littlejohn Coliseum, Clemson  
2021-22 Women's Basketball

**Game Time:** 1:00 PM  
**Game Duration:** 1:59  
**Attendance:** 423

**Officials:** Denise Brooks, John Capolino, Dan Outlaw

**North Florida**

No	Name	Mins		Score		Points Diff		Points per Min		Assists		Rebounds		Steals		Turnovers	
		On	Off	On	Off	On	Off	On	Off	On	Off	On	Off	On	Off	On	Off
0	Jaida Bond	22:20	17:40	43 - 40	29 - 44	3	-15	1.93	1.64	8	4	14	8	2	2	10	5
1	Nubia Benedith	23:09	16:51	41 - 53	31 - 31	-12	0	1.77	1.84	6	6	10	12	2	2	8	7
3	Tiffany Tolbert	19:27	20:33	35 - 37	37 - 47	-2	-10	1.80	1.80	6	6	10	12	2	2	8	7
4	Erin Jones	09:00	31:00	16 - 20	56 - 64	-4	-8	1.78	1.81	3	9	5	17	1	3	2	13
11	Jazz Bond	35:13	04:47	67 - 74	5 - 10	-7	-5	1.90	1.05	12	0	18	4	4	0	13	2
13	Rhett Moore	36:51	03:09	67 - 84	5 - 0	-17	5	1.82	1.59	11	1	20	2	4	0	14	1
22	Ally Knights	22:18	17:42	40 - 51	32 - 33	-11	-1	1.79	1.81	7	5	13	9	2	2	8	7
23	Summah Evans	00:59	39:01	0 - 3	72 - 81	-3	-9	0.00	1.85	0	12	0	22	0	4	1	14
24	Tatiana Thompson	16:10	23:50	30 - 33	42 - 51	-3	-9	1.86	1.76	3	9	11	11	2	2	5	10
40	Emma Broermann	14:33	25:27	21 - 25	51 - 59	-4	-8	1.44	2.00	4	8	9	13	1	3	6	9

**Clemson**

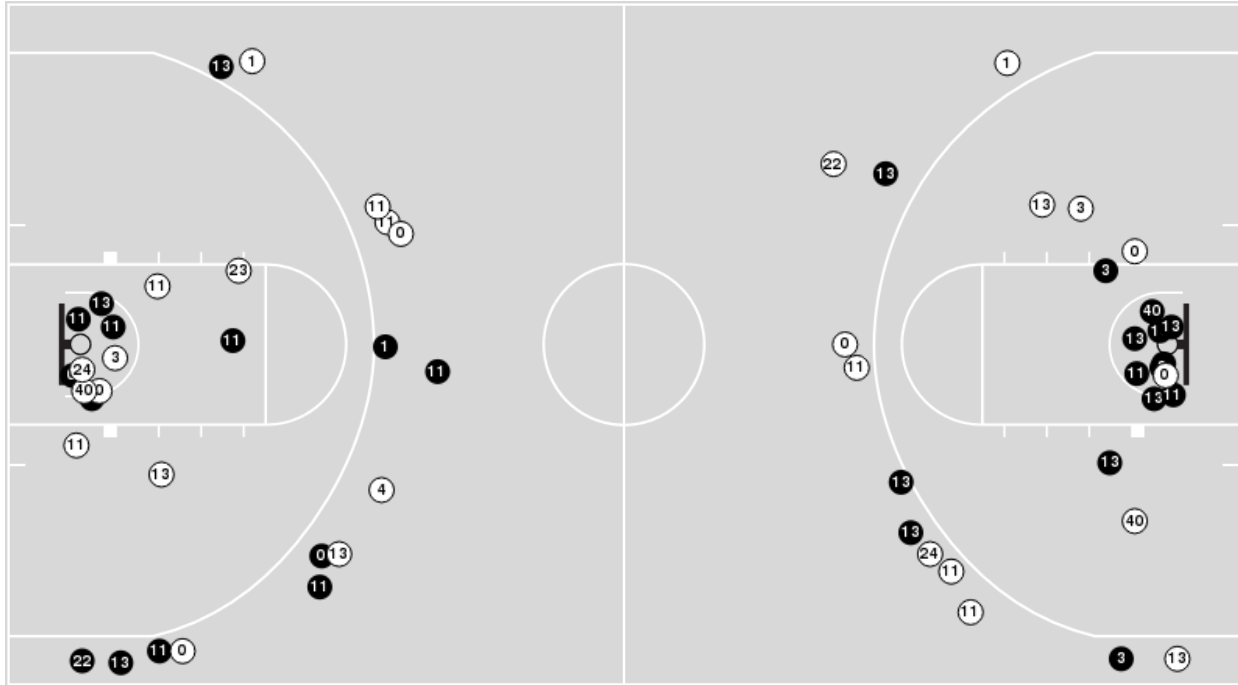
No	Name	Mins		Score		Points Diff		Points per Min		Assists		Rebounds		Steals		Turnovers	
		On	Off	On	Off	On	Off	On	Off	On	Off	On	Off	On	Off	On	Off
00	Delicia Washington	26:52	13:08	58 - 49	26 - 23	9	3	2.16	1.98	10	6	22	18	7	0	6	5
1	Eno Inyang	15:42	24:18	22 - 24	62 - 48	-2	14	1.40	2.55	3	13	14	26	1	6	5	6
2	Daisha Bradford	21:09	18:51	46 - 44	38 - 28	2	10	2.17	2.02	10	6	24	16	1	6	6	5
3	MaKayla Elmore	02:54	37:06	8 - 5	76 - 67	3	9	2.76	2.05	1	15	1	39	1	6	0	11
4	Weronika Hipp	04:00	36:00	9 - 8	75 - 64	1	11	2.25	2.08	2	14	8	32	0	7	0	11
5	Amari Robinson	27:08	12:52	60 - 49	24 - 23	11	1	2.21	1.87	12	4	31	9	5	2	8	3
10	Gabby Elliott	33:34	06:26	72 - 55	12 - 17	17	-5	2.14	1.87	15	1	35	5	7	0	10	1
12	Hannah Hank	16:08	23:52	30 - 27	54 - 45	3	9	1.86	2.26	5	11	17	23	1	6	4	7
23	Kiara Lewis	34:07	05:53	69 - 64	15 - 8	5	7	2.02	2.55	12	4	30	10	6	1	11	0
30	Madi Ott	01:31	38:29	2 - 0	82 - 72	2	10	1.32	2.13	0	16	2	38	0	7	0	11
40	Latrese Saine	16:55	23:05	44 - 35	40 - 37	9	3	2.60	1.73	10	6	16	24	6	1	5	6



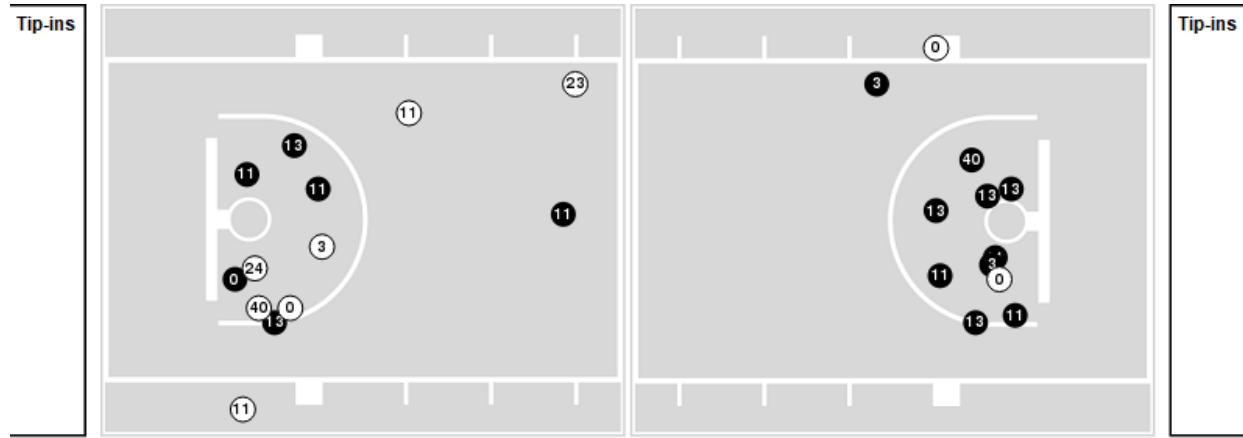
**Officials:** Denise Brooks, John Capolino, Dan Outlaw

Players => AllFG Types=>AllResults=>All  
**North Florida**

**All Field Goals**



**Blow Up Chart**



● Made    ○ Missed    N - Player Number

North Florida	M/A	%
Field Goals	29/57	51
2 Points	17/30	57
3 Points	12/27	44
Free Throws	2/3	67

North Florida	M/A	%
Points in the Paint	32 (16 / 23)	70
Fast Break Points	15 (6/6)	100
Second Chance Points	5 (2/3)	67
Effective FG%	61	

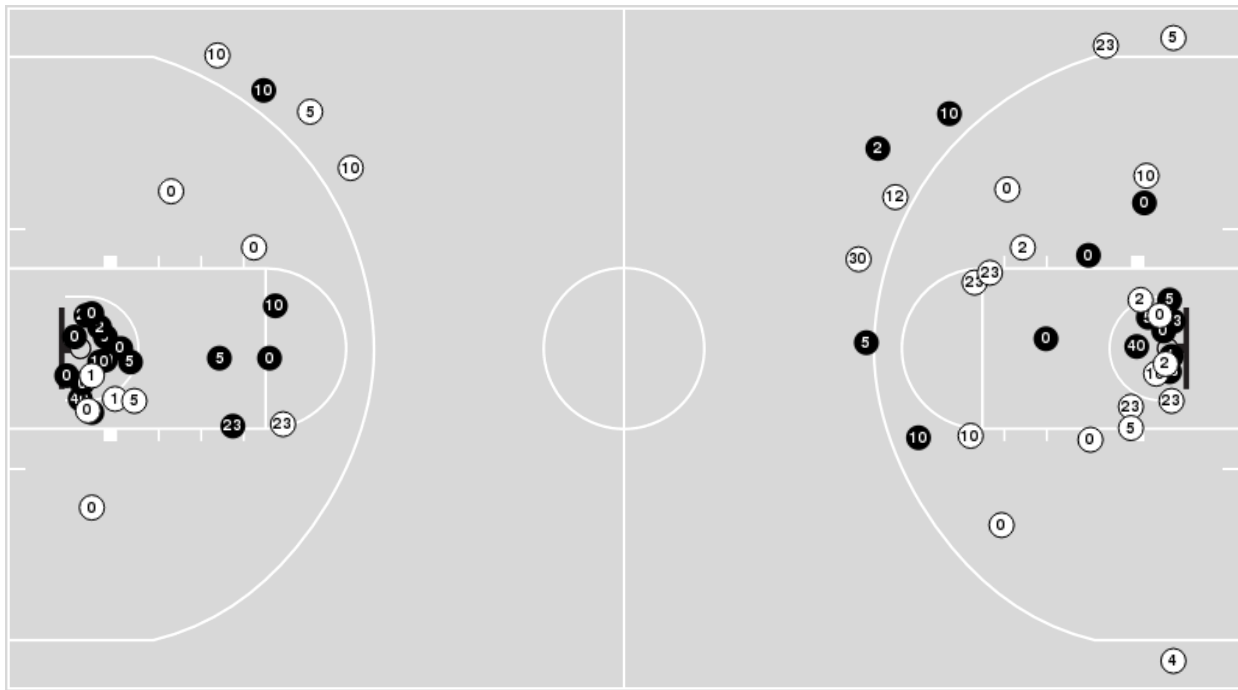


**Officials:** Denise Brooks, John Capolino, Dan Outlaw

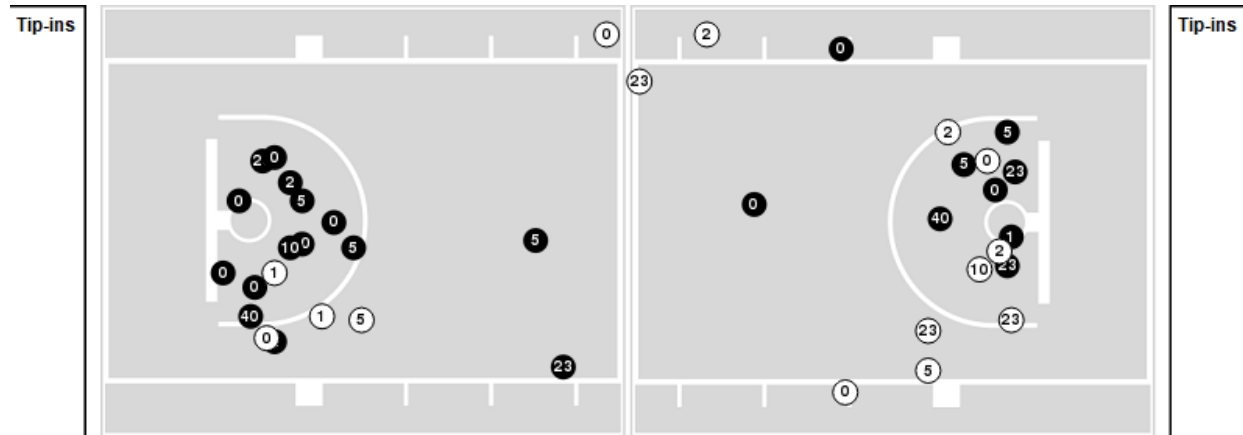
Players => AllFG Types=>AllResults=>All

**Clemson**

**All Field Goals**



**Blow Up Chart**



**N** Made    **O** Missed    N - Player Number

Clemson	M/A	%
Field Goals	32/63	51
2 Points	28/51	55
3 Points	4/12	33
Free Throws	16/22	73

Clemson	M/A	%
Points in the Paint	46 (23 / 35)	66
Fast Break Points	12 (6/9)	67
Second Chance Points	18 (11/16)	69
Effective FG%	54	



**North Florida at Clemson**

11/24/21 Littlejohn Coliseum, Clemson  
2021-22 Women's Basketball

**Game Time:** 1:00 PM  
**Game Duration:** 1:59  
**Attendance:** 423

**Officials:** Denise Brooks, John Capolino, Dan Outlaw

**North Florida**

Lineup	Quarter On	Time On	Quarter Off	Time Off	Time on Court	Score	Score Diff	Reb	Stl	Tov	Ass	PPP
0- Bond J/ 3- Tolbert T/ 11- Bond J/ 13- Moore R/ 40- Broermann E/	1	10:00	1	07:21	02:39	3-2	1	3	0	3	1	0.5000
0- Bond J/ 11- Bond J/ 13- Moore R/ 22- Knights A/ 40- Broermann E/	1	07:21	1	06:19	01:02	0-2	-2	1	0	0	0	0.0000
0- Bond J/ 1- Benedith N/ 11- Bond J/ 13- Moore R/ 22- Knights A/	1	06:19	1	06:06	00:13	0-0	0	0	0	1	0	0.0000
1- Benedith N/ 11- Bond J/ 13- Moore R/ 4- Jones E/ 22- Knights A/	1	06:06	1	02:25	03:41	8-8	0	1	1	0	2	1.3333
1- Benedith N/ 13- Moore R/ 4- Jones E/ 22- Knights A/ 24- Thompson T/	1	02:25	1	02:12	00:13	0-0	0	1	0	1	0	0.0000
1- Benedith N/ 3- Tolbert T/ 13- Moore R/ 4- Jones E/ 24- Thompson T/	1	02:12	1	00:58	01:13	3-2	1	2	0	0	0	3.0000
3- Tolbert T/ 13- Moore R/ 4- Jones E/ 23- Evans S/ 24- Thompson T/	1	00:58	2	10:00	00:59	0-3	-3	0	0	1	0	0.0000
0- Bond J/ 3- Tolbert T/ 11- Bond J/ 13- Moore R/ 40- Broermann E/	2	10:00	2	09:31	00:29	2-2	0	0	0	0	0	2.0000
0- Bond J/ 11- Bond J/ 13- Moore R/ 22- Knights A/ 24- Thompson T/	2	09:31	2	06:30	03:01	8-5	3	4	0	1	2	1.6000
0- Bond J/ 1- Benedith N/ 11- Bond J/ 22- Knights A/ 24- Thompson T/	2	06:30	2	06:20	00:10	0-0	0	0	0	0	0	0.0000
1- Benedith N/ 11- Bond J/ 13- Moore R/ 22- Knights A/ 24- Thompson T/	2	06:20	2	05:42	00:38	2-0	2	1	0	0	0	2.0000
0- Bond J/ 1- Benedith N/ 11- Bond J/ 22- Knights A/ 24- Thompson T/	2	05:42	2	05:13	00:29	2-0	2	0	0	0	0	1.3889
1- Benedith N/ 3- Tolbert T/ 11- Bond J/ 22- Knights A/ 24- Thompson T/	2	05:13	2	03:50	01:23	3-0	3	1	0	0	1	3.0000
1- Benedith N/ 3- Tolbert T/ 11- Bond J/ 13- Moore R/ 22- Knights A/	2	03:50	2	03:28	00:22	0-4	-4	0	0	1	0	0.0000
1- Benedith N/ 11- Bond J/ 13- Moore R/ 4- Jones E/ 22- Knights A/	2	03:28	2	01:56	01:32	3-4	-1	0	0	0	1	1.0000
1- Benedith N/ 13- Moore R/ 4- Jones E/ 22- Knights A/ 24- Thompson T/	2	01:56	2	00:33	01:22	2-3	-1	1	0	0	0	1.0000
1- Benedith N/ 3- Tolbert T/ 11- Bond J/ 13- Moore R/ 24- Thompson T/	2	00:33	3	10:00	00:34	0-2	-2	1	0	0	0	0.0000
0- Bond J/ 3- Tolbert T/ 11- Bond J/ 13- Moore R/ 40- Broermann E/	3	10:00	3	05:54	04:06	10-6	4	3	1	1	2	1.6667
0- Bond J/ 11- Bond J/ 13- Moore R/ 22- Knights A/ 24- Thompson T/	3	05:54	3	03:51	02:03	4-5	-1	0	1	0	0	1.0000
0- Bond J/ 1- Benedith N/ 11- Bond J/ 13- Moore R/ 22- Knights A/	3	03:51	3	02:26	01:25	0-6	-6	1	0	2	0	0.0000
0- Bond J/ 1- Benedith N/ 3- Tolbert T/ 11- Bond J/ 13- Moore R/	3	02:26	4	10:00	02:26	8-2	6	0	0	0	2	2.0000
1- Benedith N/ 3- Tolbert T/ 13- Moore R/ 24- Thompson T/ 40- Broermann E/	4	10:00	4	09:00	01:00	0-2	-2	0	0	0	0	0.0000
1- Benedith N/ 3- Tolbert T/ 11- Bond J/ 13- Moore R/ 40- Broermann E/	4	09:00	4	07:22	01:38	2-5	-3	0	0	0	0	1.0000
0- Bond J/ 1- Benedith N/ 11- Bond J/ 22- Knights A/ 40- Broermann E/	4	07:22	4	06:15	01:07	0-0	0	1	0	1	0	0.0000
0- Bond J/ 11- Bond J/ 13- Moore R/ 22- Knights A/ 40- Broermann E/	4	06:15	4	03:43	02:32	4-6	-2	1	0	1	1	1.0000
1- Benedith N/ 3- Tolbert T/ 11- Bond J/ 13- Moore R/ 24- Thompson T/	4	03:43	4	01:05	02:38	4-7	-3	0	1	2	0	0.6667
1- Benedith N/ 11- Bond J/ 13- Moore R/ 22- Knights A/ 24- Thompson T/	4	01:05	4	00:38	00:27	2-4	-2	0	0	0	0	2.0000
0- Bond J/ 1- Benedith N/ 11- Bond J/ 13- Moore R/ 22- Knights A/	4	00:38	4	00:00	00:38	2-4	-2	0	0	0	0	0.6944





**North Florida at Clemson**

11/24/21 Littlejohn Coliseum, Clemson  
2021-22 Women's Basketball

**Game Time:** 1:00 PM  
**Game Duration:** 1:59  
**Attendance:** 423

**Officials:** Denise Brooks, John Capolino, Dan Outlaw

**Clemson**

Lineup	Quarter On	Time On	Quarter Off	Time Off	Time on Court	Score	Score Diff	Reb	Stl	Tov	Ass	PPP
00- Washington D/ 5- Robinson A/ 10- Elliott G/ 23- Lewis K/ 40- Saine L/	1	10:00	1	08:34	01:26	2-0	2	2	1	1	0	0.6667
1- Inyang E/ 2- Bradford D/ 5- Robinson A/ 10- Elliott G/ 23- Lewis K/	1	08:34	1	07:53	00:41	0-0	0	0	0	1	0	0.0000
00- Washington D/ 1- Inyang E/ 2- Bradford D/ 4- Hipp W/ 12- Hank H/	1	07:53	1	07:21	00:32	0-3	-3	1	0	0	0	0.0000
00- Washington D/ 1- Inyang E/ 2- Bradford D/ 12- Hank H/ 30- Ott M/	1	07:21	1	05:50	01:31	2-0	2	2	0	0	0	0.6944
1- Inyang E/ 2- Bradford D/ 10- Elliott G/ 12- Hank H/ 23- Lewis K/	1	05:50	1	05:15	00:35	0-0	0	1	0	1	0	0.0000
2- Bradford D/ 5- Robinson A/ 10- Elliott G/ 23- Lewis K/ 40- Saine L/	1	05:15	1	02:25	02:50	8-8	0	3	0	1	2	2.0000
00- Washington D/ 1- Inyang E/ 3- Elmore M/ 10- Elliott G/ 23- Lewis K/	1	02:25	1	00:56	01:29	3-3	0	0	0	0	0	1.0870
00- Washington D/ 3- Elmore M/ 10- Elliott G/ 23- Lewis K/ 40- Saine L/	1	00:56	2	10:00	00:56	2-0	2	1	1	0	1	2.0000
00- Washington D/ 2- Bradford D/ 3- Elmore M/ 23- Lewis K/ 40- Saine L/	2	10:00	2	09:31	00:29	3-2	1	0	0	0	0	2.0833
00- Washington D/ 2- Bradford D/ 12- Hank H/ 23- Lewis K/ 40- Saine L/	2	09:31	2	07:33	01:58	2-8	-6	0	0	0	0	0.6667
00- Washington D/ 1- Inyang E/ 10- Elliott G/ 12- Hank H/ 23- Lewis K/	2	07:33	2	06:30	01:03	2-0	2	1	0	0	1	1.0000
00- Washington D/ 1- Inyang E/ 5- Robinson A/ 10- Elliott G/ 23- Lewis K/	2	06:30	2	05:42	00:48	0-2	-2	0	0	0	0	0.0000
00- Washington D/ 5- Robinson A/ 10- Elliott G/ 23- Lewis K/ 40- Saine L/	2	05:42	2	03:50	01:52	0-5	-5	3	0	0	0	0.0000
00- Washington D/ 2- Bradford D/ 5- Robinson A/ 10- Elliott G/ 40- Saine L/	2	03:50	2	03:28	00:22	4-0	4	0	1	0	2	2.0000
2- Bradford D/ 4- Hipp W/ 5- Robinson A/ 10- Elliott G/ 40- Saine L/	2	03:28	2	01:56	01:32	4-3	1	4	0	0	1	2.0000
1- Inyang E/ 2- Bradford D/ 4- Hipp W/ 5- Robinson A/ 10- Elliott G/	2	01:56	2	00:27	01:29	5-2	3	2	0	0	1	1.7361
2- Bradford D/ 4- Hipp W/ 5- Robinson A/ 10- Elliott G/ 12- Hank H/	2	00:27	3	10:00	00:27	0-0	0	1	0	0	0	0.0000
00- Washington D/ 1- Inyang E/ 5- Robinson A/ 10- Elliott G/ 23- Lewis K/	3	10:00	3	06:49	03:11	4-8	-4	2	0	1	0	0.8000
00- Washington D/ 2- Bradford D/ 5- Robinson A/ 12- Hank H/ 23- Lewis K/	3	06:49	3	04:53	01:56	5-4	1	2	0	1	1	1.2887
00- Washington D/ 2- Bradford D/ 10- Elliott G/ 12- Hank H/ 23- Lewis K/	3	04:53	3	03:51	01:02	2-2	0	1	0	0	0	2.0000
00- Washington D/ 10- Elliott G/ 12- Hank H/ 23- Lewis K/ 40- Saine L/	3	03:51	3	02:26	01:25	6-0	6	0	1	0	1	1.7442
2- Bradford D/ 10- Elliott G/ 12- Hank H/ 23- Lewis K/ 40- Saine L/	3	02:26	3	01:18	01:08	2-3	-1	1	0	0	1	2.0000
1- Inyang E/ 2- Bradford D/ 10- Elliott G/ 12- Hank H/ 23- Lewis K/	3	01:18	3	00:34	00:44	0-2	-2	1	0	2	0	0.0000
2- Bradford D/ 5- Robinson A/ 10- Elliott G/ 12- Hank H/ 23- Lewis K/	3	00:34	4	07:22	03:12	7-5	2	4	0	0	1	1.8041
00- Washington D/ 1- Inyang E/ 5- Robinson A/ 10- Elliott G/ 23- Lewis K/	4	07:22	4	03:43	03:39	6-4	2	4	1	0	1	1.2000
00- Washington D/ 5- Robinson A/ 10- Elliott G/ 23- Lewis K/ 40- Saine L/	4	03:43	4	00:45	02:57	11-6	5	2	2	3	2	1.4398
2- Bradford D/ 5- Robinson A/ 10- Elliott G/ 12- Hank H/ 23- Lewis K/	4	00:45	4	00:38	00:08	0-0	0	0	0	0	0	0.0000
00- Washington D/ 2- Bradford D/ 5- Robinson A/ 10- Elliott G/ 23- Lewis K/	4	00:38	4	00:26	00:11	2-2	0	0	0	0	1	2.0000
00- Washington D/ 5- Robinson A/ 10- Elliott G/ 12- Hank H/ 23- Lewis K/	4	00:26	4	00:21	00:05	2-0	2	1	0	0	0	2.2727
2- Bradford D/ 5- Robinson A/ 10- Elliott G/ 12- Hank H/ 23- Lewis K/	4	00:21	4	00:00	00:22	0-0	0	1	0	0	0	0.0000



**North Florida at Clemson**

11/24/21 Littlejohn Coliseum, Clemson  
2021-22 Women's Basketball

**Game Time:** 1:00 PM  
**Game Duration:** 1:59  
**Attendance:** 423

**Officials:** Denise Brooks, John Capolino, Dan Outlaw

**North Florida**

Lineup	Time	Score	Score Diff	Pts/Min	Reb	Stl	Tov	Ass	PPP
0- Bond J/ 3- Tolbert T/ 11- Bond J/ 13- Moore R/ 40- Broermann E/	07:14	15-10	5	2.0737	6	1	4	3	1.1538
1- Benedith N/ 11- Bond J/ 13- Moore R/ 4- Jones E/ 22- Knights A/	05:13	11-12	-1	2.1086	1	1	0	3	1.2222
0- Bond J/ 11- Bond J/ 13- Moore R/ 22- Knights A/ 24- Thompson T/	05:04	12-10	2	2.3684	4	1	1	2	1.3333
0- Bond J/ 11- Bond J/ 13- Moore R/ 22- Knights A/ 40- Broermann E/	03:34	4-8	-4	1.1215	2	0	1	1	0.8000
1- Benedith N/ 3- Tolbert T/ 11- Bond J/ 13- Moore R/ 24- Thompson T/	03:12	4-9	-5	1.2500	1	1	2	0	0.5714
0- Bond J/ 1- Benedith N/ 3- Tolbert T/ 11- Bond J/ 13- Moore R/	02:26	8-2	6	3.2877	0	0	0	2	2.0000
0- Bond J/ 1- Benedith N/ 11- Bond J/ 13- Moore R/ 22- Knights A/	02:16	2-10	-8	0.8824	1	0	3	0	0.3401
1- Benedith N/ 3- Tolbert T/ 11- Bond J/ 13- Moore R/ 40- Broermann E/	01:38	2-5	-3	1.2245	0	0	0	0	1.0000
1- Benedith N/ 13- Moore R/ 4- Jones E/ 22- Knights A/ 24- Thompson T/	01:35	2-3	-1	1.2632	2	0	1	0	0.6667
1- Benedith N/ 3- Tolbert T/ 11- Bond J/ 22- Knights A/ 24- Thompson T/	01:23	3-0	3	2.1687	1	0	0	1	3.0000
1- Benedith N/ 3- Tolbert T/ 13- Moore R/ 4- Jones E/ 24- Thompson T/	01:13	3-2	1	2.4658	2	0	0	0	3.0000
0- Bond J/ 1- Benedith N/ 11- Bond J/ 22- Knights A/ 40- Broermann E/	01:07	0-0	0	0.0000	1	0	1	0	0.0000
1- Benedith N/ 11- Bond J/ 13- Moore R/ 22- Knights A/ 24- Thompson T/	01:05	4-4	0	3.6923	1	0	0	0	2.0000
1- Benedith N/ 3- Tolbert T/ 13- Moore R/ 24- Thompson T/ 40- Broermann E/	01:00	0-2	-2	0.0000	0	0	0	0	0.0000
3- Tolbert T/ 13- Moore R/ 4- Jones E/ 23- Evans S/ 24- Thompson T/	00:59	0-3	-3	0.0000	0	0	1	0	0.0000
0- Bond J/ 1- Benedith N/ 11- Bond J/ 22- Knights A/ 24- Thompson T/	00:39	2-0	2	3.0769	0	0	0	0	1.3889
1- Benedith N/ 3- Tolbert T/ 11- Bond J/ 13- Moore R/ 22- Knights A/	00:22	0-4	-4	0.0000	0	0	1	0	0.0000



**North Florida at Clemson**

11/24/21 Littlejohn Coliseum, Clemson  
2021-22 Women's Basketball

**Game Time:** 1:00 PM  
**Game Duration:** 1:59  
**Attendance:** 423

**Officials:** Denise Brooks, John Capolino, Dan Outlaw

**Clemson**

Lineup	Time	Score	Score Diff	Pts/Min	Reb	Stl	Tov	Ass	PPP
00- Washington D/ 1- Inyang E/ 5- Robinson A/ 10- Elliott G/ 23- Lewis K/	07:38	10-14	-4	1.3100	6	1	1	1	0.9091
00- Washington D/ 5- Robinson A/ 10- Elliott G/ 23- Lewis K/ 40- Saine L/	06:15	13-11	2	2.0800	7	3	4	2	1.1168
2- Bradford D/ 5- Robinson A/ 10- Elliott G/ 12- Hank H/ 23- Lewis K/	03:42	7-5	2	1.8919	5	0	0	1	1.8041
2- Bradford D/ 5- Robinson A/ 10- Elliott G/ 23- Lewis K/ 40- Saine L/	02:50	8-8	0	2.8235	3	0	1	2	2.0000
00- Washington D/ 2- Bradford D/ 12- Hank H/ 23- Lewis K/ 40- Saine L/	01:58	2-8	-6	1.0169	0	0	0	0	0.6667
00- Washington D/ 2- Bradford D/ 5- Robinson A/ 12- Hank H/ 23- Lewis K/	01:56	5-4	1	2.5862	2	0	1	1	1.2887
2- Bradford D/ 4- Hipp W/ 5- Robinson A/ 10- Elliott G/ 40- Saine L/	01:32	4-3	1	2.6087	4	0	0	1	2.0000
00- Washington D/ 1- Inyang E/ 2- Bradford D/ 12- Hank H/ 30- Ott M/	01:31	2-0	2	1.3187	2	0	0	0	0.6944
00- Washington D/ 1- Inyang E/ 3- Elmore M/ 10- Elliott G/ 23- Lewis K/	01:29	3-3	0	2.0225	0	0	0	0	1.0870
1- Inyang E/ 2- Bradford D/ 4- Hipp W/ 5- Robinson A/ 10- Elliott G/	01:29	5-2	3	3.3708	2	0	0	1	1.7361
00- Washington D/ 10- Elliott G/ 12- Hank H/ 23- Lewis K/ 40- Saine L/	01:25	6-0	6	4.2353	0	1	0	1	1.7442
1- Inyang E/ 2- Bradford D/ 10- Elliott G/ 12- Hank H/ 23- Lewis K/	01:19	0-2	-2	0.0000	2	0	3	0	0.0000
2- Bradford D/ 10- Elliott G/ 12- Hank H/ 23- Lewis K/ 40- Saine L/	01:08	2-3	-1	1.7647	1	0	0	1	2.0000
00- Washington D/ 1- Inyang E/ 10- Elliott G/ 12- Hank H/ 23- Lewis K/	01:03	2-0	2	1.9048	1	0	0	1	1.0000
00- Washington D/ 2- Bradford D/ 10- Elliott G/ 12- Hank H/ 23- Lewis K/	01:02	2-2	0	1.9355	1	0	0	0	2.0000
00- Washington D/ 3- Elmore M/ 10- Elliott G/ 23- Lewis K/ 40- Saine L/	00:56	2-0	2	2.1429	1	1	0	1	2.0000
1- Inyang E/ 2- Bradford D/ 5- Robinson A/ 10- Elliott G/ 23- Lewis K/	00:41	0-0	0	0.0000	0	0	1	0	0.0000
00- Washington D/ 1- Inyang E/ 2- Bradford D/ 4- Hipp W/ 12- Hank H/	00:32	0-3	-3	0.0000	1	0	0	0	0.0000
00- Washington D/ 2- Bradford D/ 3- Elmore M/ 23- Lewis K/ 40- Saine L/	00:29	3-2	1	6.2069	0	0	0	0	2.0833
2- Bradford D/ 4- Hipp W/ 5- Robinson A/ 10- Elliott G/ 12- Hank H/	00:27	0-0	0	0.0000	1	0	0	0	0.0000
00- Washington D/ 2- Bradford D/ 5- Robinson A/ 10- Elliott G/ 40- Saine L/	00:22	4-0	4	10.9091	0	1	0	2	2.0000
00- Washington D/ 2- Bradford D/ 5- Robinson A/ 10- Elliott G/ 23- Lewis K/	00:11	2-2	0	10.9091	0	0	0	1	2.0000
00- Washington D/ 5- Robinson A/ 10- Elliott G/ 12- Hank H/ 23- Lewis K/	00:05	2-0	2	24.0000	1	0	0	0	2.2727