



Officials: Ted Valentine, Lee Cassell, Bert Smith

Florida St. - 67

Record: 5-2 (1-1)

NO.	Name	Min	FG			Rebounds			Fouls		TP	AS	TO	ST	Blocks		+/-
			M-A	3P	FT	OR	DR	TOT	PF	FD					BS	BA	
1	RaiQuan Gray	F 21:47	1-8	0-5	0-0	0	3	3	4	0	2	0	4	3	1	0	-9
5	Balsa Koprivica	C 19:34	4-6	0-0	0-1	2	7	9	3	2	8	0	0	1	1	0	-8
2	Anthony Polite	G 26:53	2-7	2-4	1-2	0	3	3	4	3	7	2	3	1	0	0	-6
4	Scottie Barnes	G 21:47	6-10	1-3	1-2	2	2	4	4	1	14	5	3	2	1	0	-4
23	M.J. Walker	G 32:48	4-10	1-6	2-2	1	2	3	1	3	11	3	2	1	0	0	-11
0	RayQuan Evans	20:42	3-4	1-2	2-2	0	2	2	2	4	9	0	2	0	0	0	-5
10	Malik Osborne	24:30	1-5	0-3	0-0	2	6	8	2	1	2	2	1	0	1	1	-4
31	Wyatt Wilkes	14:57	3-5	3-5	0-0	0	2	2	2	0	9	1	0	0	1	0	-4
24	Sardaar Calhoun	10:38	2-6	1-4	0-0	0	0	0	0	0	5	0	0	0	0	0	-5
11	Nathanael Jack	03:47	0-1	0-0	0-0	0	0	0	1	0	0	0	0	0	1	0	4
34	Tanor Ngom	02:37	0-0	0-0	0-0	0	0	0	1	0	0	0	1	0	0	0	2
Team						1	0	1			0		1				
<b>Totals</b>			26-62	9-32	6-9	8	27	35	24	14	67	13	17	8	6	1	-10

Technical Fouls: NONE

Shooting By Period		
1st FG%	12-27	44.4%
3PT%	6-15	40.0%
FT%	4-4	100%
2nd FG%	14-35	40.0%
3PT%	3-17	17.6%
FT%	2-5	40%
GM FG%	26-62	41.9%
3PT%	9-32	28.1%
FT%	6-9	66.7%

Dead Ball Rebounds: 1, 0

Clemson - 77

Record: 7-1 (1-1)

NO.	Name	Min	FG			Rebounds			Fouls		TP	AS	TO	ST	Blocks		+/-
			M-A	3P	FT	OR	DR	TOT	PF	FD					BS	BA	
1	Jonathan Baehre	F 24:19	2-7	0-2	4-7	4	3	7	0	5	8	0	2	1	1	0	7
25	Aamir Simms	F 27:58	2-5	0-1	4-5	3	8	11	2	4	8	3	3	0	0	0	10
0	Clyde Trapp	G 23:33	4-10	1-3	6-8	1	5	6	1	6	15	0	1	3	0	1	0
2	Al-Amir Dawes	G 24:40	4-8	3-6	0-0	0	2	2	2	0	11	1	3	0	0	1	8
15	John Newman III	G 23:15	2-7	0-1	2-2	2	5	7	2	1	6	4	3	1	0	2	14
4	Nick Honor	21:40	3-10	2-5	5-7	2	2	4	2	4	13	1	0	1	0	2	7
3	Chase Hunter	21:47	3-8	0-3	2-2	1	1	2	1	2	8	0	0	0	0	0	3
10	Olivier-Maxence Prosper	15:41	1-4	0-1	0-0	0	3	3	1	0	2	1	0	1	0	0	3
12	Alex Hemenway	05:05	1-2	1-2	0-0	0	0	0	1	0	3	0	0	0	0	0	-2
24	PJ Hall	12:02	1-2	0-0	1-2	3	1	4	2	2	3	0	0	0	0	0	0
Team						3	0	3			0		0				
<b>Totals</b>			23-63	7-24	24-33	19	30	49	14	24	77	10	12	7	1	6	10

Technical Fouls: NONE

Shooting By Period		
1st FG%	9-35	25.7%
3PT%	2-15	13.3%
FT%	9-11	81.8%
2nd FG%	14-28	50.0%
3PT%	5-9	55.6%
FT%	15-22	68.2%
GM FG%	23-63	36.5%
3PT%	7-24	29.2%
FT%	24-33	72.7%

Dead Ball Rebounds: 3, 0

	FSU	CLE
Biggest lead	9 (1st 1:41)	12 (2nd 0:43)
Best Scoring Run	6 (1st 1:41)	8 (2nd 16:31)
Lead Changes	16	
Times Tied	8	
Time with Lead	16:48	18:34

	FSU	CLE
Points from		
Turnovers	14	6
Paint	30	26
Second Chance	8	14
Fast Breaks	5	11
Bench	25	29

	Period by Period Scoring		
	1st	2nd	TOT
FSU	34	33	67
CLE	29	48	77



**Period 1**

**Period Starters:**

<b>CLE</b>	0 Trapp C	1 Baehre J	2 Dawes A	15 Newman III J	25 Simms A
<b>FSU</b>	1 Gray R	2 Polite A	4 Barnes S	5 Koprivica B	23 Walker M

Game Time	CLE	Score	Diff	FSU
20:00	1 BAEHRE J jumpball lost			5 KOPRIMCAB jumpball won
19:37	0 TRAPP C steal (1)			1 GRAY R turnover bad pass (1)
19:13	2 DAWES A 3pt FG from turnover, jump shot blocked			
19:13				5 KOPRIMCAB block (1)
19:10	1 BAEHRE J offensive rebound (1)			
19:10	1 BAEHRE J 2pt FG from turnover second chance in the paint, layup missed			
19:10	offensive rebound (2)			
19:04	25 SIMMS A 2pt FG from turnover second chance outside the paint, jump shot missed			
19:01				2 POLITE A defensive rebound (1)
18:56				4 BARNES S turnover bad pass (1)
18:41	1 BAEHRE J turnover lost ball (1)			
18:40				1 GRAY R turnover travel (2)
18:35	1 BAEHRE J 3pt FG from turnover, jump shot missed			
18:31				23 WALKER M defensive rebound (1)
18:28	25 SIMMS A foul drawn (1)			23 WALKER M foul offensive (1 - 1)
18:28				23 WALKER M turnover offensive (1)
18:24	0 TRAPP C 2pt FG fast break from turnover in the paint, dunk, made (2)	<b>2-0</b>	<b>2</b>	
18:24	25 SIMMS A assist (1)			
18:13	15 NEWMAN III J steal (1)			2 POLITE A turnover bad pass (1)
18:05	15 NEWMAN III J 3pt FG from turnover, jump shot missed			
18:01				5 KOPRIMCAB defensive rebound (1)
17:41				1 GRAY R 2pt FG outside the paint, jump shot missed
17:40	15 NEWMAN III J defensive rebound (1)			
17:30	2 DAWES A foul offensive (1 - 1)			2 POLITE A foul drawn (1)
17:30	2 DAWES A turnover offensive (1)			
17:15				4 BARNES S 3pt FG from turnover, jump shot missed
17:11	25 SIMMS A defensive rebound (1)			
17:09	25 SIMMS A turnover lost ball (1)			4 BARNES S steal (1)
17:05				4 BARNES S 2pt FG from turnover in the paint, jump shot missed
17:05	0 TRAPP C defensive rebound (1)			
17:05	0 TRAPP C foul drawn (1)			4 BARNES S foul personal (1 - 2)
16:45	0 TRAPP C 3pt FG, jump shot missed			
16:43				1 GRAY R defensive rebound (1)
16:30				1 GRAY R 3pt FG, jump shot missed
16:27				23 WALKER M offensive rebound (2)
16:25				2 POLITE A turnover travel (2)
16:13	4 HONOR N 2pt FG from turnover in the paint, jump shot missed			
16:11				2 POLITE A defensive rebound (2)
15:51				2 POLITE A 3pt FG, jump shot missed
15:47				10 OSBORNE M offensive rebound (1)



Game Time	CLE	Score	Diff	FSU
15:44				2 POLITE A 2pt FG second chance in the paint, jump shot missed
15:43	25 SIMMS A defensive rebound (2)			
15:36	1 BAEHRE J 2pt FG fast break in the paint, layup made (2)	<b>4-0</b>	<b>4</b>	
15:36	25 SIMMS A assist (2)			
15:06		<b>4-2</b>	<b>2</b>	0 EVANS R 2pt FG in the paint, layup made (2)
14:45	4 HONOR N 3pt FG , jump shot blocked			
14:45				31 WLKES W block (1)
14:45	4 HONOR N offensive rebound (1)			
14:45	jump ball situation			
14:45	Timeout media			
14:34	3 HUNTER C 2pt FG second chance in the paint, jump shot made (2)	<b>6-2</b>	<b>4</b>	
14:11		<b>6-5</b>	<b>1</b>	24 CALHOUN S 3pt FG , jump shot made (3)
14:11				23 WALKER M assist (1)
13:47	3 HUNTER C 3pt FG , jump shot missed			
13:46				10 OSBORNE M defensive rebound (2)
13:46	25 SIMMS A foul personal (1 - 2)			10 OSBORNE M foul drawn (1)
13:42		<b>6-7</b>	<b>-1</b>	23 WALKER M 2pt FG fast break in the paint, dunk, made (2)
13:42				31 WLKES W assist (1)
13:20	24 HALL P 2pt FG in the paint, jump shot missed			
13:20	offensive rebound (8)			
13:15	3 HUNTER C foul drawn (1)			10 OSBORNE M foul shooting (1 - 3)
13:15	3 HUNTER C free throw 1 - 2 made (3)	<b>7-7</b>	<b>0</b>	
13:15	3 HUNTER C free throw 2 - 2 made (4)	<b>8-7</b>	<b>1</b>	
12:58				24 CALHOUN S 3pt FG , jump shot missed
12:55	4 HONOR N defensive rebound (2)			
12:50	3 HUNTER C 2pt FG in the paint, layup missed			
12:45	24 HALL P offensive rebound (1)			
12:45	24 HALL P 2pt FG second chance in the paint, layup made (2)	<b>10-7</b>	<b>3</b>	
12:24		<b>10-10</b>	<b>0</b>	31 WLKES W 3pt FG , jump shot made (3)
12:24				10 OSBORNE M assist (1)
12:11	10 PROSPER O 2pt FG in the paint, layup missed			
12:09	4 HONOR N offensive rebound (3)			
12:10	4 HONOR N 2pt FG second chance in the paint, layup missed			
12:10	24 HALL P offensive rebound (2)			
12:09	24 HALL P foul drawn (1)			31 WLKES W foul shooting (1 - 4)
12:09	24 HALL P free throw 1 - 2 made (3)	<b>11-10</b>	<b>1</b>	
12:09	24 HALL P free throw 2 - 2 missed			
12:07				1 GRAY R defensive rebound (2)
11:47				10 OSBORNE M 3pt FG , jump shot missed
11:45	15 NEWMAN III J defensive rebound (2)			
11:26	15 NEWMAN III J 2pt FG in the paint, layup blocked			
11:26				11 JACK N block (1)
11:23				1 GRAY R defensive rebound (3)
11:19		<b>11-12</b>	<b>-1</b>	4 BARNES S 2pt FG in the paint, jump shot made (2)
11:00	15 NEWMAN III J 2pt FG outside the paint, jump shot missed			
10:58				2 POLITE A defensive rebound (3)
10:42				1 GRAY R 3pt FG , jump shot missed
10:39				10 OSBORNE M offensive rebound (3)
10:28	24 HALL P foul drawn (2)			1 GRAY R foul offensive (1 - 5)



Game Time	CLE	Score	Diff	FSU
10:28				1 GRAY R turnover offensive (3)
10:28	Timeout media			
09:59	2 DAWES A 3pt FG from turnover, jump shot missed			
09:57				5 KOPRIMCAB defensive rebound (2)
09:53	0 TRAPP C steal (2)			4 BARNES S turnover bad pass (2)
09:48	0 TRAPP C 2pt FG from turnover in the paint, layup missed			
09:44				5 KOPRIMCAB defensive rebound (3)
09:33	24 HALL P foul personal (1 - 3)			5 KOPRIMCAB foul drawn (1)
09:26		<b>11-14</b>	<b>-3</b>	1 GRAY R 2pt FG outside the paint, jump shot made (2)
09:26				4 BARNES S assist (1)
09:11	0 TRAPP C foul drawn (2)			11 JACK N foul personal (1 - 6)
09:01	0 TRAPP C 3pt FG , jump shot made (5)	<b>14-14</b>	<b>0</b>	
08:43				11 JACK N 2pt FG in the paint, jump shot missed
08:41	0 TRAPP C defensive rebound (2)			
08:34	0 TRAPP C 2pt FG in the paint, layup missed			
08:32				5 KOPRIMCAB defensive rebound (4)
08:22		<b>14-17</b>	<b>-3</b>	4 BARNES S 3pt FG , jump shot made (5)
08:22				2 POLITE A assist (1)
08:16	1 BAEHRE J turnover lost ball (2)			1 GRAY R steal (1)
08:05				23 WALKER M 3pt FG from turnover, jump shot missed
08:03	3 HUNTER C defensive rebound (1)			
07:43	25 SIMMS A foul drawn (2)			1 GRAY R foul personal (2 - 7)
07:43	Timeout media			
07:43	25 SIMMS A 1&1 free throw 1 made (1)	<b>15-17</b>	<b>-2</b>	
07:43	25 SIMMS A 1&1 free throw 2 made (2)	<b>16-17</b>	<b>-1</b>	
07:32				4 BARNES S 2pt FG in the paint, layup missed
07:30				5 KOPRIMCAB offensive rebound (5)
07:29		<b>16-19</b>	<b>-3</b>	5 KOPRIMCAB 2pt FG second chance in the paint, layup made (2)
07:07	3 HUNTER C 3pt FG , jump shot missed			
07:05				31 WILKES W defensive rebound (1)
06:57				4 BARNES S 3pt FG , jump shot missed
06:54	25 SIMMS A defensive rebound (3)			
06:54	25 SIMMS A foul drawn (3)			5 KOPRIMCAB foul personal (1 - 8)
06:54	25 SIMMS A 1&1 free throw 1 missed			
06:53				31 WILKES W defensive rebound (2)
06:45				5 KOPRIMCAB 2pt FG in the paint, jump shot missed
06:45	25 SIMMS A defensive rebound (4)			
06:45	25 SIMMS A foul drawn (4)			5 KOPRIMCAB foul personal (2 - 9)
06:45	25 SIMMS A 1&1 free throw 1 made (3)	<b>17-19</b>	<b>-2</b>	
06:45	25 SIMMS A 1&1 free throw 2 made (4)	<b>18-19</b>	<b>-1</b>	
06:35		<b>18-21</b>	<b>-3</b>	0 EVANS R 2pt FG in the paint, layup made (4)
06:35				4 BARNES S assist (2)
06:11	12 HEMENWAY A 3pt FG , jump shot made (3)	<b>21-21</b>	<b>0</b>	
06:11	25 SIMMS A assist (3)			
05:50	3 HUNTER C foul shooting (1 - 4)			23 WALKER M foul drawn (1)
05:50		<b>21-22</b>	<b>-1</b>	23 WALKER M free throw 1 - 2 made (3)
05:50		<b>21-23</b>	<b>-2</b>	23 WALKER M free throw 2 - 2 made (4)
05:28	2 DAWES A 3pt FG , jump shot missed			
05:26				4 BARNES S defensive rebound (1)
05:14		<b>21-26</b>	<b>-5</b>	31 WILKES W 3pt FG , jump shot made (6)



Official Basketball Play by Play - First Half  
**Florida St. at Clemson**  
 12/29/20 Littlejohn Coliseum, Clemson  
 2020-21 Clemson Men's Basketball

Game Time: 7:00 PM  
 Game Duration: 2:11  
 Attendance: 1,876

Officials: Ted Valentine, Lee Cassell, Bert Smith

Game Time	CLE	Score	Diff	FSU
05:14				4 BARNES S assist (3)
05:00	10 PROSPER O 3pt FG , jump shot missed			
04:58	25 SIMMS A offensive rebound (5)			
04:56	12 HEMENWAY A 3pt FG second chance, jump shot missed			
04:54	3 HUNTER C offensive rebound (2)			
04:33	3 HUNTER C 2pt FG second chance in the paint, layup made (6)	<b>23-26</b>	<b>-3</b>	
04:25	12 HEMENWAY A foul shooting (1 - 5)			0 EVANS R foul drawn (1)
04:25		<b>23-27</b>	<b>-4</b>	0 EVANS R free throw 1 - 2 made (5)
04:25		<b>23-28</b>	<b>-5</b>	0 EVANS R free throw 2 - 2 made (6)
04:09	10 PROSPER O 2pt FG outside the paint, jump shot made (2)	<b>25-28</b>	<b>-3</b>	
03:39		<b>25-31</b>	<b>-6</b>	0 EVANS R 3pt FG , jump shot made (9)
03:39				2 POLITE A assist (2)
03:23	Timeout 30 Sec			
02:57	3 HUNTER C 3pt FG , jump shot missed			
02:55				10 OSBORNE M defensive rebound (4)
02:41	3 HUNTER C foul drawn (2)			34 NGOMT foul offensive (1 - 10)
02:41				34 NGOMT turnover offensive (1)
02:17	4 HONOR N 2pt FG from turnover in the paint, layup missed			
02:12	25 SIMMS A offensive rebound (6)			
02:09	0 TRAPP C 2pt FG from turnover second chance in the paint, layup missed			
02:06				10 OSBORNE M defensive rebound (5)
01:48	4 HONOR N foul personal (1 - 6)			0 EVANS R foul drawn (2)
01:41		<b>25-34</b>	<b>-9</b>	23 WALKER M 3pt FG , jump shot made (7)
01:41				4 BARNES S assist (4)
01:25	1 BAEHRE J 2pt FG in the paint, jump shot made (4)	<b>27-34</b>	<b>-7</b>	
01:08				4 BARNES S turnover travel (3)
00:47	1 BAEHRE J 3pt FG from turnover, jump shot missed			
00:43				10 OSBORNE M defensive rebound (6)
00:37				23 WALKER M 3pt FG , jump shot missed
00:35	25 SIMMS A defensive rebound (7)			
00:31	0 TRAPP C foul drawn (3)			4 BARNES S foul personal (2 - 11)
00:31	0 TRAPP C free throw 1 - 2 made (6)	<b>28-34</b>	<b>-6</b>	
00:31	0 TRAPP C free throw 2 - 2 made (7)	<b>29-34</b>	<b>-5</b>	
00:31				Timeout 30 Sec
00:00				turnover shot clock (11)
<b>END OF PERIOD</b>				
<b>CLE 29-34 FSU</b>				





Officials: Ted Valentine, Lee Cassell, Bert Smith

Florida St. - 34

NO.	Name	Min	FG			Rebounds			Fouls		TP	AS	TO	ST	Blocks		+/-
			M-A	M-A	M-A	OR	DR	TOT	PF	FD					BS	BA	
1	RaiQuan Gray	F 08:01	1-4	0-2	0-0	0	3	3	2	0	2	0	3	1	0	0	2
5	Balsa Koprivica	C 07:18	1-2	0-0	0-0	1	4	5	2	1	2	0	0	0	1	0	0
2	Anthony Polite	G 14:55	0-2	0-1	0-0	0	3	3	0	1	0	2	2	0	0	0	3
4	Scottie Barnes	G 11:56	2-6	1-3	0-0	0	1	1	2	0	5	4	3	1	0	0	3
23	M.J. Walker	G 16:13	2-4	1-3	2-2	1	1	2	1	1	7	1	1	0	0	0	1
0	RayQuan Evans	10:33	3-3	1-1	2-2	0	0	0	0	2	9	0	0	0	0	0	3
10	Malik Osborne	12:42	0-1	0-1	0-0	2	4	6	1	1	0	1	0	0	0	0	5
31	Wyatt Wilkes	09:22	2-2	2-2	0-0	0	2	2	1	0	6	1	0	0	1	0	1
24	Sardaar Calhoun	02:36	1-2	1-2	0-0	0	0	0	0	0	3	0	0	0	0	0	1
11	Nathanael Jack	03:47	0-1	0-0	0-0	0	0	0	1	0	0	0	0	0	1	0	4
34	Tanor Ngom	02:37	0-0	0-0	0-0	0	0	0	1	0	0	0	1	0	0	0	2
Team						0	0	0			0		1				
<b>Totals</b>			12-27	6-15	4-4	4	18	22	11	6	34	9	11	2	3	0	5

Shooting By Period		
1st FG%	12-27	44.4%
3PT%	6-15	40.0%
FT%	4-4	100%
GM FG%	12-27	44.4%
3PT%	6-15	40.0%
FT%	4-4	100.0%

Dead Ball Rebounds: 0, 0

Technical Fouls: NONE

Clemson - 29

NO.	Name	Min	FG			Rebounds			Fouls		TP	AS	TO	ST	Blocks		+/-
			M-A	M-A	M-A	OR	DR	TOT	PF	FD					BS	BA	
1	Jonathan Baehre	F 13:04	2-5	0-2	0-0	1	0	1	0	0	4	0	2	0	0	0	-1
25	Aamir Simms	F 14:36	0-1	0-0	4-5	2	5	7	1	4	4	3	1	0	0	0	-1
0	Clyde Trapp	G 13:27	2-6	1-2	2-2	0	2	2	0	3	7	0	0	2	0	0	-3
2	Al-Amir Dawes	G 10:46	0-3	0-3	0-0	0	0	0	1	0	0	0	1	0	0	1	-2
15	John Newman III	G 08:41	0-3	0-1	0-0	0	2	2	0	0	0	0	0	1	0	1	-1
4	Nick Honor	09:14	0-4	0-1	0-0	2	1	3	1	0	0	0	0	0	0	1	-3
3	Chase Hunter	12:47	2-6	0-3	2-2	1	1	2	1	2	6	0	0	0	0	0	-4
10	Olivier-Maxence Prosper	06:56	1-3	0-1	0-0	0	0	0	0	0	2	0	0	0	0	0	-4
12	Alex Hemenway	05:05	1-2	1-2	0-0	0	0	0	1	0	3	0	0	0	0	0	-2
24	PJ Hall	05:24	1-2	0-0	1-2	2	0	2	1	2	3	0	0	0	0	0	-4
Team						2	0	2			0		0				
<b>Totals</b>			9-35	2-15	9-11	10	11	21	6	11	29	3	4	3	0	3	-5

Shooting By Period		
1st FG%	9-35	25.7%
3PT%	2-15	13.3%
FT%	9-11	81.8%
GM FG%	9-35	25.7%
3PT%	2-15	13.3%
FT%	9-11	81.8%

Dead Ball Rebounds: 0, 0

Technical Fouls: NONE

	FSU	CLE
Biggest lead	9 (1st 1:41)	4 (1st 15:36)
Best Scoring Run	6 (1st 1:41)	4 (1st 15:36)
Lead Changes	3	
Times Tied	4	
Time with Lead	10:46	06:23

Points from	FSU	CLE
Turnovers	0	2
Paint	10	12
Second Chance	2	9
Fast Breaks	2	4
Bench	18	14

	Period by Period Scoring		
	1st	2nd	TOT
FSU	34	33	67
CLE	29	48	77



**Period 2**

**Period Starters:**

<b>CLE</b>	0 Trapp C	1 Baehre J	2 Dawes A	15 Newman III J	25 Simms A
<b>FSU</b>	1 Gray R	2 Polite A	4 Barnes S	5 Koprivica B	23 Walker M

Game Time	CLE	Score	Diff	FSU
19:49				2 POLITE A 2pt FG in the paint, jump shot missed
19:47	25 SIMMS A defensive rebound (8)			
19:32	25 SIMMS A 2pt FG in the paint, hook shot missed			
19:28				4 BARNES S defensive rebound (2)
19:25		<b>29-36</b>	<b>-7</b>	5 KOPRIVICA B 2pt FG in the paint, dunk, made (4)
19:25				4 BARNES S assist (5)
19:05	2 DAWES A 3pt FG, jump shot made (3)	<b>32-36</b>	<b>-4</b>	
19:05	15 NEWMAN III J assist (1)			
18:57				2 POLITE A turnover out of bounds (3)
18:33	2 DAWES A 2pt FG from turnover in the paint, layup missed			
18:33	0 TRAPP C offensive rebound (3)			
18:33	0 TRAPP C foul drawn (4)			2 POLITE A foul shooting (1 - 1)
18:33	0 TRAPP C free throw 1 - 2 made (8)	<b>33-36</b>	<b>-3</b>	
18:33	0 TRAPP C free throw 2 - 2 missed			
18:33	1 BAEHRE J offensive rebound (2)			
18:27	0 TRAPP C 3pt FG second chance, jump shot missed			
18:27	1 BAEHRE J offensive rebound (3)			
18:26	1 BAEHRE J foul drawn (1)			1 GRAY R foul personal (3 - 2)
18:19	0 TRAPP C 2pt FG in the paint, layup made (10)	<b>35-36</b>	<b>-1</b>	
17:48	0 TRAPP C foul personal (1 - 1)			0 EVANS R foul drawn (3)
17:37				10 OSBORNE M 2pt FG in the paint, layup blocked
17:37	1 BAEHRE J block (1)			
17:34	15 NEWMAN III J defensive rebound (3)			
17:26	0 TRAPP C 2pt FG in the paint, dunk, blocked			
17:26				10 OSBORNE M block (1)
17:26	offensive rebound (27)			
17:23	1 BAEHRE J 2pt FG second chance in the paint, jump shot missed			
17:21	1 BAEHRE J offensive rebound (4)			
17:20	1 BAEHRE J 2pt FG second chance in the paint, jump shot missed			
17:16				10 OSBORNE M defensive rebound (7)
17:04	2 DAWES A foul personal (2 - 2)			23 WALKER M foul drawn (2)
17:02				23 WALKER M turnover out of bounds (2)
17:02				Timeout 30 Sec
16:48	0 TRAPP C turnover bad pass (1)			5 KOPRIVICA B steal (1)
16:43	10 PROSPER O steal (1)			10 OSBORNE M turnover bad pass (1)
16:31	2 DAWES A 2pt FG from turnover in the paint, jump shot made (5)	<b>37-36</b>	<b>1</b>	
16:14				10 OSBORNE M 3pt FG, jump shot missed
16:11				5 KOPRIVICA B offensive rebound (6)
16:11		<b>37-38</b>	<b>-1</b>	5 KOPRIVICA B 2pt FG second chance in the paint, layup made (6)
16:11	10 PROSPER O foul shooting (1 - 3)			5 KOPRIVICA B foul drawn (2)
16:11				5 KOPRIVICA B free throw 1 - 1 missed
16:10	25 SIMMS A defensive rebound (9)			







**Florida St. at Clemson**

12/29/20 Littlejohn Coliseum, Clemson  
2020-21 Clemson Men's Basketball

Officials: Ted Valentine, Lee Cassell, Bert Smith

Game Time	CLE	Score	Diff	FSU
15:59	25 SIMMS A foul offensive (2 - 4)			2 POLITE A foul drawn (2)
15:59	25 SIMMS A turnover offensive (2)			
15:43		<b>37-40</b>	<b>-3</b>	10 OSBORNE M2pt FG from turnover in the paint, dunk, made (2)
15:43				23 WALKER Massist (2)
15:20	15 NEWMAN III J foul drawn (1)			2 POLITE A foul shooting (2 - 3)
15:20	15 NEWMAN III J free throw 1 - 2 made (1)	<b>38-40</b>	<b>-2</b>	
15:20	15 NEWMAN III J free throw 2 - 2 made (2)	<b>39-40</b>	<b>-1</b>	
15:02				5 KOPRIMCAB 2pt FG in the paint, layup missed
15:00	25 SIMMS A defensive rebound (10)			
14:48	2 DAWES A3pt FG , jump shot made (8)	<b>42-40</b>	<b>2</b>	
14:29		<b>42-43</b>	<b>-1</b>	2 POLITE A3pt FG , jump shot made (3)
14:29				10 OSBORNE Massist (2)
14:06	15 NEWMAN III J 2pt FG in the paint, layup blocked			
14:06				4 BARNES S block (1)
14:02	15 NEWMAN III J offensive rebound (4)			
14:01	15 NEWMAN III J 2pt FG second chance in the paint, layup made (4)	<b>44-43</b>	<b>1</b>	
13:42				1 GRAY R 3pt FG , jump shot missed
13:40				4 BARNES S offensive rebound (3)
13:38		<b>44-45</b>	<b>-1</b>	4 BARNES S 2pt FG second chance in the paint, layup made (7)
13:28	25 SIMMS A2pt FG fast break in the paint, layup made (6)	<b>46-45</b>	<b>1</b>	
13:28	15 NEWMAN III J assist (2)			
13:13				10 OSBORNE M3pt FG , jump shot missed
13:11	10 PROSPER O defensive rebound (1)			
13:03	15 NEWMAN III J 2pt FG in the paint, layup missed			
13:01	15 NEWMAN III J offensive rebound (5)			
12:58	15 NEWMAN III J foul offensive (1 - 5)			23 WALKER M foul drawn (3)
12:58	15 NEWMAN III J turnover offensive (1)			
12:36		<b>46-47</b>	<b>-1</b>	23 WALKER M2pt FG from turnover outside the paint, jump shot made (9)
12:26	0 TRAPP C foul drawn (5)			4 BARNES S foul shooting (3 - 4)
12:26	0 TRAPP C free throw 1 - 2 made (11)	<b>47-47</b>	<b>0</b>	
12:26	0 TRAPP C free throw 2 - 2 missed			
12:25				5 KOPRIMCAB defensive rebound (7)
12:14				1 GRAY R 3pt FG , jump shot missed
12:10	0 TRAPP C defensive rebound (4)			
11:55	4 HONOR N foul drawn (1)			4 BARNES S foul shooting (4 - 5)
11:55	Timeout media			
11:55	4 HONOR N free throw 1 - 2 missed			
11:55	offensive dead ball rebound (1)			
11:55	4 HONOR N free throw 2 - 2 made (1)	<b>48-47</b>	<b>1</b>	
11:32		<b>48-49</b>	<b>-1</b>	24 CALHOUN S 2pt FG in the paint, jump shot made (5)
11:19	1 BAEHRE J foul drawn (2)			31 WLKES W foul shooting (2 - 6)
11:19	1 BAEHRE J free throw 1 - 2 made (5)	<b>49-49</b>	<b>0</b>	
11:19	1 BAEHRE J free throw 2 - 2 made (6)	<b>50-49</b>	<b>1</b>	
11:02				24 CALHOUN S 2pt FG in the paint, jump shot missed
10:53	1 BAEHRE J defensive rebound (5)			
10:38	4 HONOR N 3pt FG , jump shot missed			
10:36				23 WALKER M defensive rebound (3)
10:33		<b>50-52</b>	<b>-2</b>	31 WLKES W 3pt FG , jump shot made (9)







**Florida St. at Clemson**

12/29/20 Littlejohn Coliseum, Clemson  
2020-21 Clemson Men's Basketball

Officials: Ted Valentine, Lee Cassell, Bert Smith

Game Time	CLE	Score	Diff	FSU
10:24	3 HUNTER C 2pt FG outside the paint, jump shot made (8)	<b>52-52</b>	<b>0</b>	
10:06				31 WLKES W 3pt FG , jump shot missed
10:05				offensive rebound (29)
09:57				23 WALKER M 3pt FG second chance, jump shot missed
09:56	1 BAEHRE J defensive rebound (6)			
09:57	1 BAEHRE J foul drawn (3)			5 KOPRIMCAB foul personal (3 - 7)
09:57	1 BAEHRE J 1&1 free throw 1 made (7)	<b>53-52</b>	<b>1</b>	
09:57	1 BAEHRE J 1&1 free throw 2 made (8)	<b>54-52</b>	<b>2</b>	
09:45	1 BAEHRE J steal (1)			0 EVANS R turnover lost ball (1)
09:45	1 BAEHRE J foul drawn (4)			0 EVANS R foul personal (1 - 8)
09:45	1 BAEHRE J 1&1 free throw 1 missed			
09:44				5 KOPRIMCAB defensive rebound (8)
09:30				24 CALHOUN S 3pt FG , jump shot missed
09:27	24 HALL P defensive rebound (3)			
09:21	4 HONOR N 3pt FG , jump shot missed			
09:19	24 HALL P offensive rebound (4)			
09:03	4 HONOR N 2pt FG second chance in the paint, jump shot blocked			
09:03				1 GRAY R block (1)
08:58				5 KOPRIMCAB defensive rebound (9)
08:39				31 WLKES W 3pt FG , jump shot missed
08:37	15 NEWMAN III J defensive rebound (6)			
08:32	3 HUNTER C 2pt FG in the paint, jump shot missed			
08:32				0 EVANS R defensive rebound (1)
08:32	24 HALL P foul personal (2 - 6)			0 EVANS R foul drawn (4)
08:18				1 GRAY R 2pt FG outside the paint, jump shot missed
08:16	10 PROSPER O defensive rebound (2)			
08:06	15 NEWMAN III J turnover bad pass (2)			1 GRAY R steal (2)
07:50		<b>54-54</b>	<b>0</b>	5 KOPRIMCAB 2pt FG from turnover in the paint, hook shot made (8)
07:33	10 PROSPER O 2pt FG in the paint, layup missed			
07:30				0 EVANS R defensive rebound (2)
07:10				0 EVANS R 3pt FG , jump shot missed
07:07	15 NEWMAN III J defensive rebound (7)			
07:01	4 HONOR N 3pt FG , jump shot made (4)	<b>57-54</b>	<b>3</b>	
07:01	15 NEWMAN III J assist (3)			
06:35				24 CALHOUN S 3pt FG , jump shot missed
06:33	10 PROSPER O defensive rebound (3)			
06:28	15 NEWMAN III J 2pt FG fast break in the paint, layup made (6)	<b>59-54</b>	<b>5</b>	
06:28	10 PROSPER O assist (1)			
06:22	4 HONOR N steal (1)			0 EVANS R turnover lost ball (2)
06:20	4 HONOR N foul drawn (2)			0 EVANS R foul shooting (2 - 9)
06:20				Timeout 30 Sec
06:20	4 HONOR N free throw fast break 1 - 2 missed			
06:20	offensive dead ball rebound (2)			
06:20	4 HONOR N free throw fast break 2 - 2 made (5)	<b>60-54</b>	<b>6</b>	
06:06	4 HONOR N foul shooting (2 - 7)			2 POLITE A foul drawn (3)
06:06				2 POLITE A free throw 1 - 2 missed
06:06				offensive dead ball rebound (1)
06:06		<b>60-55</b>	<b>5</b>	2 POLITE A free throw 2 - 2 made (4)
05:59	4 HONOR N 2pt FG fast break in the paint, layup made (7)	<b>62-55</b>	<b>7</b>	





**Florida St. at Clemson**

12/29/20 Littlejohn Coliseum, Clemson  
2020-21 Clemson Men's Basketball

Officials: Ted Valentine, Lee Cassell, Bert Smith

Game Time	CLE	Score	Diff	FSU
05:59	4 HONOR N foul drawn (3)			10 OSBORNE M foul shooting (2 - 10)
05:59	4 HONOR N free throw 1 - 1 made (8)	<b>63-55</b>	<b>8</b>	
05:39		<b>63-57</b>	<b>6</b>	4 BARNES S 2pt FG in the paint, layup made (9)
05:11	2 DAWES A 3pt FG , jump shot made (11)	<b>66-57</b>	<b>9</b>	
05:11	15 NEWMAN III J assist (4)			
04:32				2 POLITE A 2pt FG in the paint, layup missed
04:30	2 DAWES A defensive rebound (1)			
04:28	2 DAWES A turnover lost ball (2)			2 POLITE A steal (1)
04:25	15 NEWMAN III J foul shooting (2 - 8)			4 BARNES S foul drawn (1)
04:25		<b>66-58</b>	<b>8</b>	4 BARNES S free throw fast break 1 - 2 made (10)
04:25				4 BARNES S free throw fast break 2 - 2 missed
04:23				4 BARNES S offensive rebound (4)
04:21		<b>66-60</b>	<b>6</b>	4 BARNES S 2pt FG second chance in the paint, layup made (12)
03:55	25 SIMMS A 3pt FG , jump shot missed			
03:52	25 SIMMS A offensive rebound (11)			
03:51	25 SIMMS A 2pt FG second chance in the paint, layup made (8)	<b>68-60</b>	<b>8</b>	
03:32				23 WALKER M 2pt FG outside the paint, jump shot missed
03:26	4 HONOR N defensive rebound (4)			
03:15	15 NEWMAN III J turnover bad pass (3)			4 BARNES S steal (2)
03:10		<b>68-62</b>	<b>6</b>	4 BARNES S 2pt FG fast break from turnover in the paint, jump shot made (14)
02:39	4 HONOR N 3pt FG , jump shot made (11)	<b>71-62</b>	<b>9</b>	
02:39	2 DAWES A assist (1)			
02:25				23 WALKER M 3pt FG , jump shot missed
02:24	1 BAEHRE J defensive rebound (7)			
02:25	1 BAEHRE J foul drawn (5)			1 GRAY R foul personal (4 - 11)
02:25	Timeout media			
02:25	1 BAEHRE J free throw 1 - 2 missed			
02:25	offensive dead ball rebound (3)			
02:25	1 BAEHRE J free throw 2 - 2 missed			
02:23				10 OSBORNE M defensive rebound (8)
02:17	0 TRAPP C steal (3)			1 GRAY R turnover bad pass (4)
01:51	25 SIMMS A turnover lost ball (3)			1 GRAY R steal (3)
01:44		<b>71-65</b>	<b>6</b>	2 POLITE A 3pt FG from turnover, jump shot made (7)
01:44				23 WALKER M assist (3)
01:44				Timeout 60 Sec
01:16	0 TRAPP C 2pt FG outside the paint, jump shot made (13)	<b>73-65</b>	<b>8</b>	
01:16	4 HONOR N assist (1)			
01:05				23 WALKER M 3pt FG , jump shot missed
01:02	0 TRAPP C defensive rebound (5)			
00:55	4 HONOR N foul drawn (4)			2 POLITE A foul personal (3 - 12)
00:55	4 HONOR N free throw 1 - 2 made (12)	<b>74-65</b>	<b>9</b>	
00:55	4 HONOR N free throw 2 - 2 made (13)	<b>75-65</b>	<b>10</b>	
00:45				1 GRAY R 3pt FG , jump shot missed
00:42	0 TRAPP C defensive rebound (6)			
00:43	0 TRAPP C foul drawn (6)			2 POLITE A foul personal (4 - 13)
00:43	0 TRAPP C free throw 1 - 2 made (14)	<b>76-65</b>	<b>11</b>	
00:43	0 TRAPP C free throw 2 - 2 made (15)	<b>77-65</b>	<b>12</b>	
00:25				2 POLITE A 3pt FG , jump shot missed
00:23	2 DAWES A defensive rebound (2)			





Official Basketball Play by Play - Second Half

**Florida St. at Clemson**

12/29/20 Littlejohn Coliseum, Clemson  
2020-21 Clemson Men's Basketball

**Game Time:** 7:00 PM

**Game Duration:** 2:11

**Attendance:** 1,876

**Officials:** Ted Valentine, Lee Cassell, Bert Smith

Game Time	CLE	Score	Diff	FSU
00:20	2 DAWES A turnover bad pass (3)			23 WALKER M steal (1)
00:11		77-67	10	23 WALKER M 2pt FG from turnover in the paint, jump shot made (11)
<b>END OF GAME</b>				
<b>CLE 77-67 FSU</b>				



**Florida St. at Clemson**

12/29/20 Littlejohn Coliseum, Clemson  
2020-21 Clemson Men's Basketball

Officials: Ted Valentine, Lee Cassell, Bert Smith

**Florida St. - 33**

NO.	Name	Min	FG			Rebounds			Fouls		TP	AS	TO	ST	Blocks		+/-
			M-A	3P	FT	OR	DR	TOT	PF	FD					BS	BA	
1	RaiQuan Gray	F 13:46	0-4	0-3	0-0	0	0	0	2	0	0	0	1	2	1	0	-11
5	Balsa Koprivica	C 12:16	3-4	0-0	0-1	1	3	4	1	1	6	0	0	1	0	0	-8
2	Anthony Polite	G 11:58	2-5	2-3	1-2	0	0	0	4	2	7	0	1	1	0	0	-9
4	Scottie Barnes	G 09:51	4-4	0-0	1-2	2	1	3	2	1	9	1	0	1	1	0	-7
23	M.J. Walker	G 16:35	2-6	0-3	0-0	0	1	1	0	2	4	2	1	1	0	0	-12
0	RayQuan Evans	10:09	0-1	0-1	0-0	0	2	2	2	2	0	0	2	0	0	0	-8
10	Malik Osborne	11:48	1-4	0-2	0-0	0	2	2	1	0	2	1	1	0	1	1	-9
24	Sardaar Calhoun	08:02	1-4	0-2	0-0	0	0	0	0	0	2	0	0	0	0	0	-6
31	Wyatt Wilkes	05:35	1-3	1-3	0-0	0	0	0	1	0	3	0	0	0	0	0	-5
Team						1	0	1			0		0				
<b>Totals</b>			14-35	3-17	2-5	4	9	13	13	8	33	4	6	6	3	1	-15

Shooting By Period		
2 <sup>nd</sup> FG%	14-35	40.0%
3PT%	3-17	17.6%
FT%	2-5	40%
GM FG%	14-35	40.0%
3PT%	3-17	17.6%
FT%	2-5	40.0%

Dead Ball Rebounds: 1, 0

Technical Fouls: NONE

**Clemson - 48**

NO.	Name	Min	FG			Rebounds			Fouls		TP	AS	TO	ST	Blocks		+/-
			M-A	3P	FT	OR	DR	TOT	PF	FD					BS	BA	
1	Jonathan Baehre	F 11:15	0-2	0-0	4-7	3	3	6	0	5	4	0	0	1	1	0	8
25	Aamir Simms	F 13:22	2-4	0-1	0-0	1	3	4	1	0	4	0	2	0	0	0	11
0	Clyde Trapp	G 10:06	2-4	0-1	4-6	1	3	4	1	3	8	0	1	1	0	1	3
2	Al-Amir Dawes	G 13:54	4-5	3-3	0-0	0	2	2	1	0	11	1	2	0	0	0	10
15	John Newman III	G 14:34	2-4	0-0	2-2	2	3	5	2	1	6	4	3	0	0	1	15
10	Olivier-Maxence Prosper	08:45	0-1	0-0	0-0	0	3	3	1	0	0	1	0	1	0	0	7
3	Chase Hunter	09:00	1-2	0-0	0-0	0	0	0	0	0	2	0	0	0	0	0	7
24	PJ Hall	06:38	0-0	0-0	0-0	1	1	2	1	0	0	0	0	0	0	0	4
4	Nick Honor	12:26	3-6	2-4	5-7	0	1	1	1	4	13	1	0	1	0	1	10
Team						1	0	1			0		0				
<b>Totals</b>			14-28	5-9	15-22	9	19	28	8	13	48	7	8	4	1	3	15

Shooting By Period		
2 <sup>nd</sup> FG%	14-28	50.0%
3PT%	5-9	55.6%
FT%	15-22	68.2%
GM FG%	14-28	50.0%
3PT%	5-9	55.6%
FT%	15-22	68.2%

Dead Ball Rebounds: 3, 0

Technical Fouls: NONE

	FSU	CLE
Biggest lead	7 (2 <sup>nd</sup> 19:25)	12 (2 <sup>nd</sup> 0:43)
Best Scoring Run	4 (2 <sup>nd</sup> 15:43)	8 (2 <sup>nd</sup> 16:31)
Lead Changes	13	
Times Tied	4	
Time with Lead	05:51	12:11

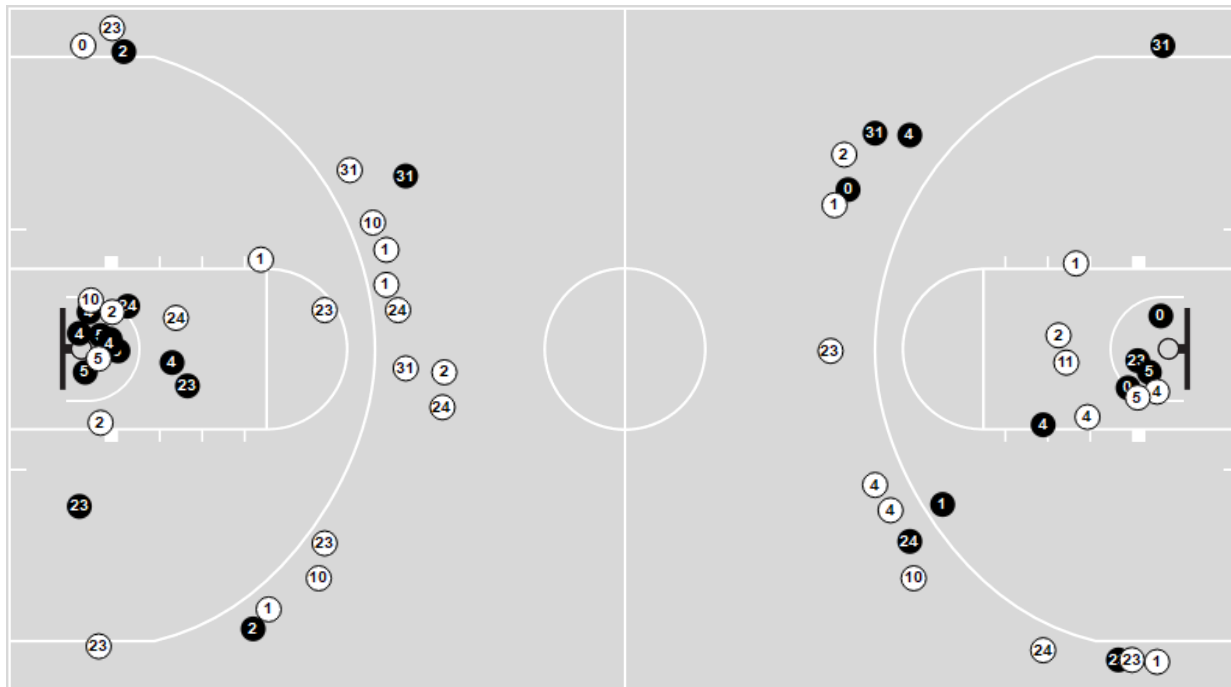
Points from	FSU	CLE
Turnovers	14	4
Paint	20	14
Second Chance	6	5
Fast Breaks	3	7
Bench	7	15

	Period by Period Scoring		
	1st	2nd	TOT
FSU	34	33	67
CLE	29	48	77

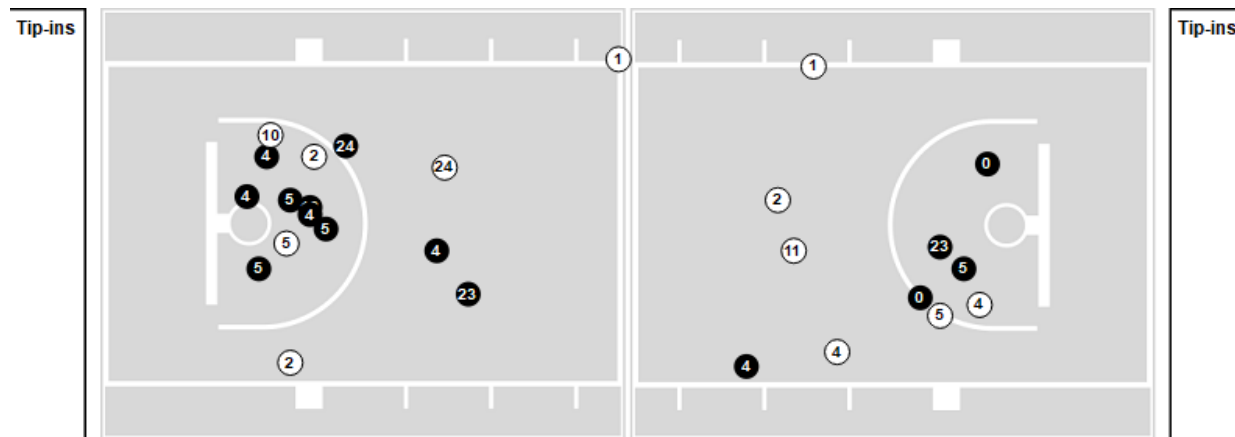


Players => All FG Types => All ; Results => All ;  
**Florida St.**

**All Field Goals**



**Shots in the Paint**



● Made    ○ Missed    N - Player Number

Florida St.	M/A	%
Field Goals	26/62	42
2 Points	17/30	57
3 Points	9/32	28
Free Throws	6/9	67

Florida St.	M/A	%
Points in the Paint	30 (15 / 25)	60
Fast Break Points	5 (3/4)	75
Second Chance Points	8 (4/7)	57
Effective FG%	49	

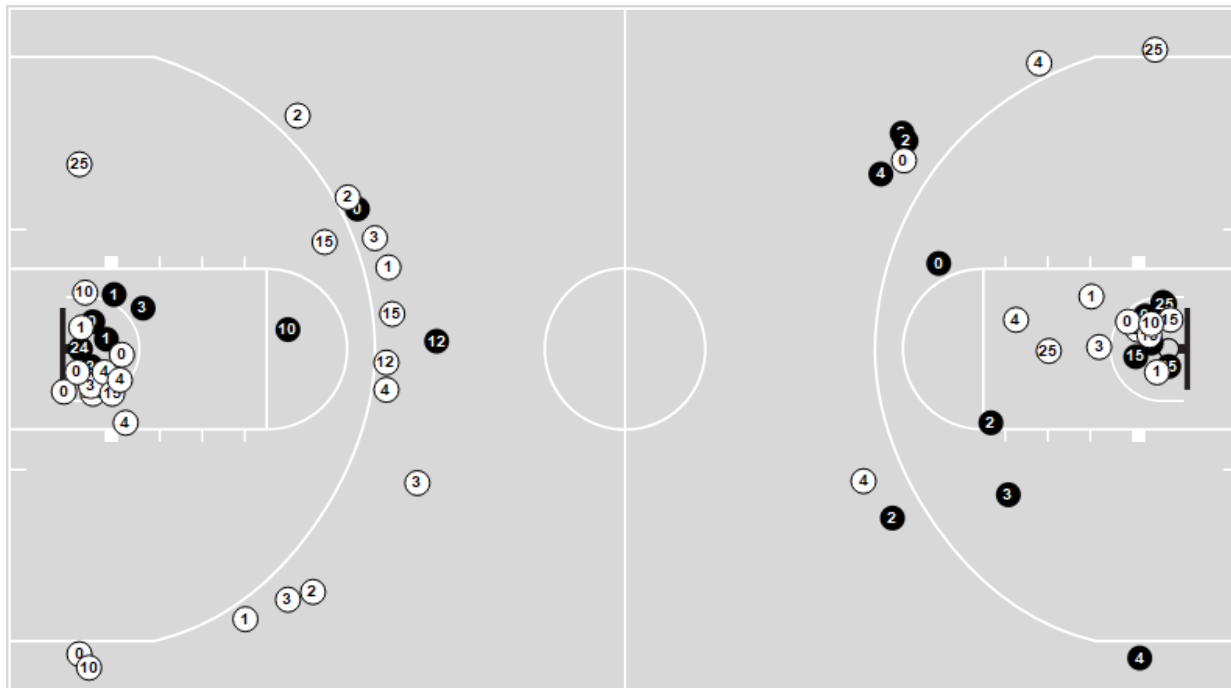


Officials: Ted Valentine, Lee Cassell, Bert Smith

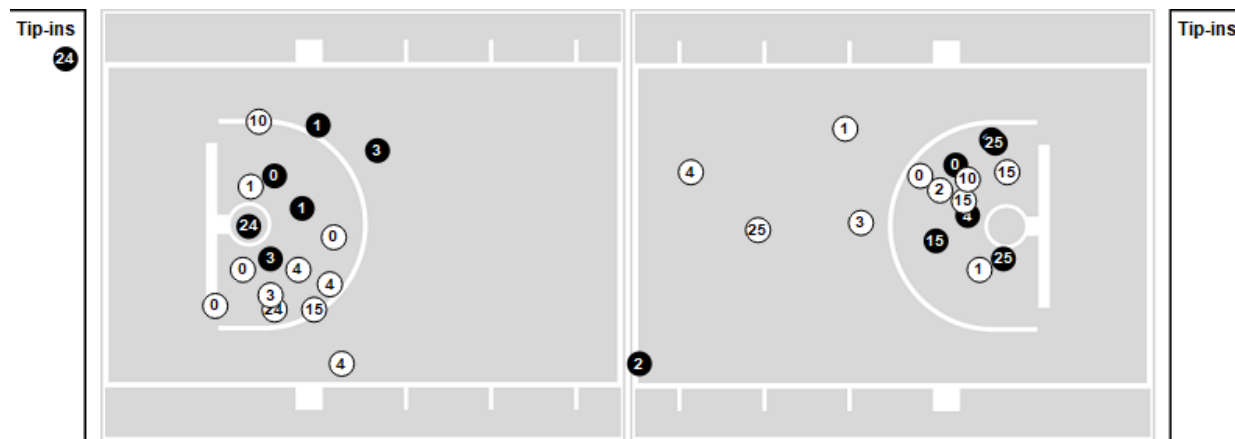
Players => All FG Types => All ; Results => All ;

**Clemson**

**All Field Goals**



**Shots in the Paint**



**N** Made    **N** Missed    **N** - Player Number

Clemson	M/A	%
Field Goals	23/63	37
2 Points	16/39	41
3 Points	7/24	29
Free Throws	24/33	73

Clemson	M/A	%
Points in the Paint	26 (13 / 34)	38
Fast Break Points	11 (6/8)	75
Second Chance Points	14 (9/20)	45
Effective FG%	42	