



Official Basketball Box Score - Final
Louisville at Clemson
 02/15/20 Littlejohn Coliseum, Clemson
 2019-20 Men's Basketball

Game Time: 4:00 PM
 Game Duration: 2:02
 Attendance: 9,146

Officials: Ted Valentine, Tony Henderson, Mark Schnur

Louisville - 62

Record: 21-5 (12-3)

NO.	Name	F	Min	FG			3P			FT			Rebounds			Fouls		TP	AS	TO	ST	Blocks		+/-
				M-A	M-A	M-A	OR	DR	TOT	PF	FD	OR	DR	TOT	BS	BA								
10	Samuell Williamson	F	05:27	0-1	0-0	0-0	0	0	0	0	0	0	0	0	0	0	0	0	0	0	0	1	-9	
24	Dwayne Sutton	F	36:23	7-15	2-5	2-4	3	4	7	4	3	18	0	0	0	0	0	0	0	0	1	0	-9	
23	Steven Enoch	C	17:11	1-3	0-0	1-2	1	4	5	2	1	3	1	1	1	0	0	0	0	0	0	-11		
0	Lamarr Kimble	G	16:37	2-6	0-2	0-0	0	0	0	3	1	4	0	1	0	0	0	0	0	0	0	-14		
2	Darius Perry	G	17:21	2-9	1-3	0-0	1	2	3	0	2	5	0	1	0	0	0	0	0	0	0	-11		
5	Malik Williams		25:08	4-9	0-0	1-2	2	2	4	2	4	9	0	0	0	0	0	0	0	3	3	-6		
33	Jordan Nwora		29:31	1-5	1-5	2-2	2	7	9	4	2	5	1	4	0	0	0	0	0	0	0	-5		
13	David Johnson		25:45	5-13	0-4	2-2	2	4	6	2	1	12	8	0	0	0	0	0	0	0	0	-6		
30	Ryan McMahon		26:37	2-8	2-8	0-0	0	0	0	2	1	6	1	0	2	1	0	2	1	0	0	-4		
Team							3	2	5			0			0									
Totals				24-69	6-27	8-12	14	25	39	19	15	62	11	7	2	2	4						-15	

Technical Fouls: NONE

Shooting By Period		
1 st FG%	5-32	15.6%
3PT%	3-16	18.8%
FT%	1-2	50%
2 nd FG%	19-37	51.4%
3PT%	3-11	27.3%
FT%	7-10	70%
GM FG%	24-69	34.8%
3PT%	6-27	22.2%
FT%	8-12	66.7%

Dead Ball Rebounds: 3, 0

Clemson - 77

Record: 13-12 (7-8)

NO.	Name	F	Min	FG			3P			FT			Rebounds			Fouls		TP	AS	TO	ST	Blocks		+/-
				M-A	M-A	M-A	OR	DR	TOT	PF	FD	OR	DR	TOT	BS	BA								
25	Aamir Simms	F	29:59	4-8	1-1	4-7	0	4	4	3	5	13	6	2	1	0	0	16						
0	Clyde Trapp	G	32:39	3-8	1-4	3-5	0	9	9	3	5	10	2	0	1	1	0	13						
2	Al-Amir Dawes	G	27:24	1-4	1-3	4-4	0	1	1	1	2	7	0	0	1	0	1	14						
13	Tevin Mack	G	32:18	6-9	2-5	0-0	0	5	5	2	0	14	1	1	0	1	0	18						
15	John Newman III	G	38:11	7-9	2-3	7-7	1	5	6	1	5	23	0	0	2	1	0	16						
12	Alex Hemenway		16:33	3-6	2-4	0-0	0	1	1	1	1	8	1	1	0	0	1	5						
21	Khavon Moore		01:49	0-1	0-0	0-0	0	1	1	0	0	0	0	0	0	0	0	-1						
55	Trey Jemison		10:01	1-1	0-0	0-0	0	2	2	1	0	2	0	1	0	0	0	-1						
10	Curran Scott		03:24	0-0	0-0	0-0	0	1	1	1	0	0	0	1	0	0	0	-2						
5	Hunter Tyson		07:42	0-3	0-3	0-0	0	1	1	2	1	0	0	0	0	0	1	0	-3					
Team							1	2	3			0			2									
Totals				25-49	9-23	18-23	2	32	34	15	19	77	10	8	5	4	2	15						

Technical Fouls: NONE

Shooting By Period		
1 st FG%	12-26	46.2%
3PT%	3-10	30.0%
FT%	4-4	100%
2 nd FG%	13-23	56.5%
3PT%	6-13	46.2%
FT%	14-19	73.7%
GM FG%	25-49	51.0%
3PT%	9-23	39.1%
FT%	18-23	78.3%

Dead Ball Rebounds: 2, 0

	LOU	CLE
Biggest lead	1 (1 st 18:53)	21 (2 nd 14:50)
Best Scoring Run	10 (2 nd 11:02)	14 (1 st 13:06)
Lead Changes	4	
Times Tied	0	
Time with Lead	00:40	38:41

	LOU	CLE
Points from		
Turnovers	6	16
Paint	32	22
Second Chance	10	4
Fast Breaks	4	10
Bench	32	10

	Period by Period Scoring		
	1st	2nd	TOT
LOU	14	48	62
CLE	31	46	77





Period 1

Period Starters:

CLE	0 Trapp C	2 Dawes A	13 Mack T	15 Newman III J	25 Simms A
LOU	0 Kimble L	2 Perry D	10 Williamson S	23 Enoch S	24 Sutton D

Game Time	CLE	Score	Diff	LOU
20:00	25 SIMMS A jumpball lost			23 ENOCH S jumpball won
19:38	25 SIMMS A steal (1)			2 PERRY D turnover bad pass (1)
19:21	0 TRAPP C 2pt FG outside the paint, jump shot made (2)	2-0	2	
18:53		2-3	-1	2 PERRY D 3pt FG , jump shot made (3)
18:53				23 ENOCH S assist (1)
18:36	25 SIMMS A 2pt FG outside the paint, jump shot made (2)	4-3	1	
18:20		4-5	-1	24 SUTTON D 2pt FG in the paint, jump shot made (2)
17:57	15 NEWMAN III J 2pt FG in the paint, layup made (2)	6-5	1	
17:46				24 SUTTON D 3pt FG , jump shot missed
17:45	15 NEWMAN III J defensive rebound (1)			
17:45	15 NEWMAN III J foul drawn (1)			23 ENOCH S foul personal (1 - 1)
17:34	15 NEWMAN III J 3pt FG , jump shot made (5)	9-5	4	
17:07	2 DAWES A steal (1)			23 ENOCH S turnover bad pass (1)
16:49	13 MACK T 3pt FG , jump shot made (3)	12-5	7	
16:49	25 SIMMS A assist (1)			
16:35				Timeout 30 Sec
16:14				0 KIMBLE L 3pt FG , jump shot missed
16:11	15 NEWMAN III J defensive rebound (2)			
15:45	25 SIMMS A 2pt FG outside the paint, jump shot missed			
15:43				24 SUTTON D defensive rebound (1)
15:38				0 KIMBLE L 2pt FG in the paint, jump shot missed
15:36	15 NEWMAN III J defensive rebound (3)			
15:21	0 TRAPP C 3pt FG , jump shot missed			
15:19				33 NWORAJ defensive rebound (1)
15:09				2 PERRY D 2pt FG in the paint, layup missed
15:07				5 WILLIAMS M offensive rebound (1)
15:09				5 WILLIAMS M 2pt FG in the paint, layup blocked
15:09	13 MACK T block (1)			
15:08				offensive rebound (4)
15:08	Timeout media			
14:51				5 WILLIAMS M 2pt FG outside the paint, jump shot missed
14:49	25 SIMMS A defensive rebound (1)			
14:35	25 SIMMS A 2pt FG in the paint, made (4)	14-5	9	
14:09				33 NWORAJ 3pt FG , jump shot missed
14:07	13 MACK T defensive rebound (1)			
13:53	13 MACK T 3pt FG , jump shot missed			
13:50				5 WILLIAMS M defensive rebound (2)
13:38	0 TRAPP C steal (1)			33 NWORAJ turnover bad pass (1)
13:34	0 TRAPP C 2pt FG fast break in the paint, layup made (4)	16-5	11	
13:09	15 NEWMAN III J steal (1)			33 NWORAJ turnover bad pass (2)
13:06	15 NEWMAN III J foul drawn (2)			5 WILLIAMS M foul shooting (1 - 2)
13:06	15 NEWMAN III J free throw fast break 1 - 2 made (6)	17-5	12	
13:06	15 NEWMAN III J free throw fast break 2 - 2 made (7)	18-5	13	
12:42				5 WILLIAMS M 2pt FG in the paint, layup missed





Official Basketball Play by Play - First Half
Louisville at Clemson
 02/15/20 Littlejohn Coliseum, Clemson
 2019-20 Men's Basketball

Game Time: 4:00 PM
 Game Duration: 2:02
 Attendance: 9,146

Officials: Ted Valentine, Tony Henderson, Mark Schnur

Game Time	CLE	Score	Diff	LOU
12:39	21 MOORE K defensive rebound (1)			
12:12	21 MOORE K 2pt FG in the paint, jump shot missed			
12:11				defensive rebound (6)
11:57				30 MCMAHON R 3pt FG , jump shot missed
11:56				offensive rebound (7)
11:57	Timeout media			
11:44		18-8	10	24 SUTTON D 3pt FG , jump shot made (5)
11:44				13 JOHNSON D assist (1)
11:28	13 MACK T 2pt FG in the paint, jump shot made (5)	20-8	12	
11:17	10 SCOTT C foul personal (1 - 1)			30 MCMAHON R foul drawn (1)
11:05				30 MCMAHON R 3pt FG , jump shot missed
11:01	5 TYSON H defensive rebound (1)			
10:41	5 TYSON H 3pt FG , jump shot missed			
10:38				13 JOHNSON D defensive rebound (1)
10:31				13 JOHNSON D 3pt FG , jump shot missed
10:28	10 SCOTT C defensive rebound (1)			
10:16	25 SIMMS A foul offensive (1 - 2)			5 WILLIAMS M foul drawn (1)
10:16	25 SIMMS A turnover offensive (1)			
10:01	15 NEWMAN III J steal (2)			33 NWORAJ turnover lost ball (3)
09:58	15 NEWMAN III J foul drawn (3)			33 NWORAJ foul shooting (1 - 3)
09:58	15 NEWMAN III J free throw fast break 1 - 2 made (8)	21-8	13	
09:58	15 NEWMAN III J free throw fast break 2 - 2 made (9)	22-8	14	
09:37				23 ENOCH S 2pt FG outside the paint, jump shot missed
09:34	0 TRAPP C defensive rebound (1)			
09:21	0 TRAPP C 2pt FG outside the paint, jump shot missed			
09:18				2 PERRY D defensive rebound (1)
09:13		22-11	11	24 SUTTON D 3pt FG , jump shot made (8)
09:13				30 MCMAHON R assist (1)
08:46	10 SCOTT C turnover lost ball (1)			30 MCMAHON R steal (1)
08:33				30 MCMAHON R 3pt FG , jump shot missed
08:33	defensive rebound (10)			
08:16	5 TYSON H 3pt FG , jump shot missed			
08:15	offensive rebound (11)			
08:14	12 HEMENWAY A 2pt FG outside the paint, jump shot made (2)	24-11	13	
08:14	0 TRAPP C assist (1)			
07:47				2 PERRY D 2pt FG outside the paint, jump shot missed
07:44	55 JEMISON T defensive rebound (1)			
07:28	5 TYSON H 3pt FG , jump shot missed			
07:24				23 ENOCH S defensive rebound (1)
07:07				10 WILLIAMSON S 2pt FG in the paint, jump shot blocked
07:07	5 TYSON H block (1)			
07:01				24 SUTTON D offensive rebound (2)
07:00				24 SUTTON D 2pt FG outside the paint, jump shot missed
06:55	55 JEMISON T defensive rebound (2)			
06:43	12 HEMENWAY A 2pt FG outside the paint, jump shot missed			
06:40				23 ENOCH S defensive rebound (2)
06:34				2 PERRY D 2pt FG in the paint, layup missed
06:32				23 ENOCH S offensive rebound (3)
06:31	5 TYSON H foul shooting (1 - 3)			23 ENOCH S foul drawn (1)
06:31	Timeout media			
06:31				23 ENOCH S free throw 1 - 2 missed





Official Basketball Play by Play - First Half
Louisville at Clemson
 02/15/20 Littlejohn Coliseum, Clemson
 2019-20 Men's Basketball

Game Time: 4:00 PM
 Game Duration: 2:02
 Attendance: 9,146

Officials: Ted Valentine, Tony Henderson, Mark Schnur

Game Time	CLE	Score	Diff	LOU
06:31				offensive dead ball rebound (1)
06:31		24-12	12	23 ENOCH S free throw 2 - 2 made (1)
06:19	12 HEMENWAY A turnover (1)			
06:07				33 NWORAJ 3pt FG , jump shot missed
06:06				24 SUTTON D offensive rebound (3)
06:06	13 MACK T foul personal (1 - 4)			24 SUTTON D foul drawn (1)
05:55				0 KIMBLE L 2pt FG outside the paint, jump shot missed
05:51	15 NEWMAN III J defensive rebound (4)			
05:40	25 SIMMS A 2pt FG in the paint, jump shot missed			
05:37				24 SUTTON D defensive rebound (4)
05:24	2 DAWES A foul personal (1 - 5)			2 PERRY D foul drawn (1)
05:06				13 JOHNSON D 2pt FG in the paint, jump shot missed
05:01				13 JOHNSON D offensive rebound (2)
04:53				33 NWORAJ 3pt FG , jump shot missed
04:45	25 SIMMS A defensive rebound (2)			
04:24	2 DAWES A 2pt FG in the paint, layup blocked			
04:24				24 SUTTON D block (1)
04:20				24 SUTTON D defensive rebound (5)
04:11				23 ENOCH S 2pt FG in the paint, missed
04:07	0 TRAPP C defensive rebound (2)			
03:46	15 NEWMAN III J 2pt FG in the paint, layup made (11)	26-12	14	
03:14		26-14	12	0 KIMBLE L 2pt FG outside the paint, made (2)
02:57	13 MACK T 3pt FG , jump shot made (8)	29-14	15	
02:57	25 SIMMS A assist (2)			
02:33				13 JOHNSON D 2pt FG in the paint, layup missed
02:30	0 TRAPP C defensive rebound (3)			
02:19	25 SIMMS A foul drawn (1)			33 NWORAJ foul personal (2 - 4)
02:19	Timeout media			
02:09	0 TRAPP C 2pt FG outside the paint, jump shot missed			
02:06				13 JOHNSON D defensive rebound (3)
01:43				0 KIMBLE L 3pt FG , jump shot missed
01:39	25 SIMMS A defensive rebound (3)			
01:39	Timeout 30 Sec			
01:22	13 MACK T 3pt FG , jump shot missed			
01:17				23 ENOCH S defensive rebound (4)
01:04				24 SUTTON D 3pt FG , jump shot missed
01:02	0 TRAPP C defensive rebound (4)			
00:58	13 MACK T 2pt FG fast break in the paint, layup made (10)	31-14	17	
00:58	0 TRAPP C assist (2)			
00:42				13 JOHNSON D 3pt FG , jump shot missed
00:40	2 DAWES A defensive rebound (1)			
00:14	13 MACK T 3pt FG , jump shot missed			
00:12				24 SUTTON D defensive rebound (6)
00:00				24 SUTTON D 3pt FG , jump shot missed
00:00	13 MACK T defensive rebound (2)			
END OF PERIOD				
CLE 31-14 LOU				





Official Basketball Box Score - First Half
Louisville at Clemson
 02/15/20 Littlejohn Coliseum, Clemson
 2019-20 Men's Basketball

Game Time: 4:00 PM
 Game Duration: 2:02
 Attendance: 9,146

Officials: Ted Valentine, Tony Henderson, Mark Schnur

Louisville - 14

NO.	Name	F	Min	FG			Rebounds			Fouls		TP	AS	TO	ST	Blocks		+/-
				M-A	M-A	M-A	OR	DR	TOT	PF	FD					BS	BA	
10	Samuell Williamson	F	05:27	0-1	0-0	0-0	0	0	0	0	0	0	0	0	0	1	1	-9
24	Dwayne Sutton	F	20:00	3-7	2-5	0-0	2	4	6	0	1	8	0	0	0	1	0	-17
23	Steven Enoch	C	13:23	0-2	0-0	1-2	1	3	4	1	1	1	1	1	0	0	-11	
0	Lamarr Kimble	G	09:44	1-5	0-2	0-0	0	0	0	0	0	2	0	0	0	0	-9	
2	Darius Perry	G	09:27	1-4	1-1	0-0	0	1	1	0	1	3	0	1	0	0	-6	
5	Malik Williams		08:56	0-3	0-0	0-0	1	1	2	1	1	0	0	0	0	1	-8	
33	Jordan Nwora		12:14	0-3	0-3	0-0	0	1	1	2	0	0	0	3	0	0	-6	
13	David Johnson		10:33	0-4	0-2	0-0	1	2	3	0	0	0	1	0	0	0	-11	
30	Ryan McMahon		10:16	0-3	0-3	0-0	0	0	0	0	1	0	1	0	1	0	-8	
Team							2	1	3			0		0				
Totals				5-32	3-16	1-2	7	13	20	4	5	14	3	5	1	1	2	-17

Shooting By Period		
1 st FG%	5-32	15.6%
3PT%	3-16	18.8%
FT%	1-2	50%
GM FG%	5-32	15.6%
3PT%	3-16	18.8%
FT%	1-2	50.0%

Dead Ball Rebounds: 1, 0

Technical Fouls: NONE

Clemson - 31

NO.	Name	F	Min	FG			Rebounds			Fouls		TP	AS	TO	ST	Blocks		+/-
				M-A	M-A	M-A	OR	DR	TOT	PF	FD					BS	BA	
25	Aamir Simms	F	15:24	2-4	0-0	0-0	0	3	3	1	1	4	2	1	1	0	0	16
0	Clyde Trapp	G	17:03	2-5	0-1	0-0	0	4	4	0	0	4	2	0	1	0	0	18
2	Al-Amir Dawes	G	13:12	0-1	0-0	0-0	0	1	1	1	0	0	0	0	1	0	1	11
13	Tevin Mack	G	15:14	4-7	2-5	0-0	0	2	2	1	0	10	0	0	0	1	0	16
15	John Newman III	G	18:11	3-3	1-1	4-4	0	4	4	0	3	11	0	0	2	0	0	18
12	Alex Hemenway		06:21	1-2	0-0	0-0	0	0	0	0	0	2	0	1	0	0	0	7
21	Khavon Moore		01:49	0-1	0-0	0-0	0	1	1	0	0	0	0	0	0	0	0	-1
55	Trey Jemison		04:36	0-0	0-0	0-0	0	2	2	0	0	0	0	0	0	0	0	1
10	Curran Scott		03:24	0-0	0-0	0-0	0	1	1	1	0	0	0	1	0	0	0	-2
5	Hunter Tyson		04:46	0-3	0-3	0-0	0	1	1	1	0	0	0	0	0	1	0	1
Team							1	1	2			0		0				
Totals				12-26	3-10	4-4	1	20	21	5	4	31	4	3	5	2	1	17

Shooting By Period		
1 st FG%	12-26	46.2%
3PT%	3-10	30.0%
FT%	4-4	100%
GM FG%	12-26	46.2%
3PT%	3-10	30.0%
FT%	4-4	100.0%

Dead Ball Rebounds: 0, 0

Technical Fouls: NONE

	LOU	CLE
Biggest lead	1 (1 st 18:53)	17 (1 st 0:58)
Best Scoring Run	3 (1 st 18:53)	14 (1 st 13:06)
Lead Changes	4	
Times Tied	0	
Time with Lead	00:40	18:41

Points from	LOU	CLE
Turnovers	0	11
Paint	2	12
Second Chance	4	2
Fast Breaks	0	8
Bench	0	2

	Period by Period Scoring	
	1st	TOT
LOU	14	14
CLE	31	31





Period 2

Period Starters:

CLE	0 Trapp C	2 Dawes A	13 Mack T	15 Newman III J	25 Simms A
LOU	5 Williams M	24 Sutton D	0 Kimble L	2 Perry D	33 Nwora J

Game Time	CLE	Score	Diff	LOU
19:46	2 DAWES A 3pt FG , jump shot missed			
19:44				33 NWORA J defensive rebound (2)
19:38	0 TRAPP C foul personal (1 - 1)			2 PERRY D foul drawn (2)
19:13				2 PERRY D 3pt FG , jump shot missed
19:12				33 NWORA J offensive rebound (3)
19:12	13 MACK T foul personal (2 - 2)			33 NWORA J foul drawn (1)
19:06	25 SIMMS A foul personal (2 - 3)			5 WILLIAMS M foul drawn (2)
19:01				24 SUTTON D 2pt FG in the paint, layup missed
19:00	0 TRAPP C defensive rebound (5)			
19:00	0 TRAPP C foul drawn (1)			24 SUTTON D foul personal (1 - 1)
18:36	25 SIMMS A 2pt FG in the paint, jump shot made (6)	33-14	19	
18:30	25 SIMMS A foul personal (3 - 4)			5 WILLIAMS M foul drawn (3)
18:22		33-16	17	2 PERRY D 2pt FG in the paint, layup made (5)
18:04	55 JEMISON T turnover travel (1)			
17:58	0 TRAPP C foul personal (2 - 5)			0 KIMBLE L foul drawn (1)
17:45				0 KIMBLE L turnover bad pass (1)
17:26	55 JEMISON T 2pt FG in the paint, layup made (2)	35-16	19	
16:53				24 SUTTON D 2pt FG in the paint, jump shot missed
16:50				33 NWORA J offensive rebound (4)
16:48				24 SUTTON D 2pt FG in the paint, layup missed
16:45	15 NEWMAN III J defensive rebound (5)			
16:26	15 NEWMAN III J 2pt FG outside the paint, jump shot missed			
16:24				2 PERRY D defensive rebound (2)
16:22				2 PERRY D 2pt FG in the paint, layup missed
16:21	0 TRAPP C defensive rebound (6)			
16:21	0 TRAPP C foul drawn (2)			24 SUTTON D foul personal (2 - 2)
16:04	2 DAWES A 3pt FG , jump shot missed			
16:01				33 NWORA J defensive rebound (5)
15:58		35-18	17	0 KIMBLE L 2pt FG in the paint, jump shot made (4)
15:31	0 TRAPP C 3pt FG , jump shot made (7)	38-18	20	
15:31	13 MACK T assist (1)			
15:12	55 JEMISON T foul shooting (1 - 6)			5 WILLIAMS M foul drawn (4)
15:12	Timeout media			
15:12		38-19	19	5 WILLIAMS M free throw 1 - 2 made (1)
15:12				5 WILLIAMS M free throw 2 - 2 missed
15:11	0 TRAPP C defensive rebound (7)			
14:50	15 NEWMAN III J foul drawn (4)			30 MCMAHON R foul shooting (1 - 3)
14:50	15 NEWMAN III J free throw 1 - 2 made (12)	39-19	20	
14:50	15 NEWMAN III J free throw 2 - 2 made (13)	40-19	21	
14:36		40-21	19	24 SUTTON D 2pt FG in the paint, layup made (10)
14:09	13 MACK T 2pt FG outside the paint, jump shot made (12)	42-21	21	
13:52		42-23	19	5 WILLIAMS M 2pt FG in the paint, layup made (3)
13:52				13 JOHNSON D assist (2)
13:25	0 TRAPP C 3pt FG , jump shot missed			





Official Basketball Play by Play - Second Half
Louisville at Clemson
 02/15/20 Littlejohn Coliseum, Clemson
 2019-20 Men's Basketball

Game Time: 4:00 PM
Game Duration: 2:02
Attendance: 9,146

Officials: Ted Valentine, Tony Henderson, Mark Schnur

Game Time	CLE	Score	Diff	LOU
13:25				defensive rebound (26)
13:12		42-25	17	5 WILLIAMS M2pt FG in the paint, layup made (5)
13:12				13 JOHNSON D assist (3)
13:05	Timeout 30 Sec			
12:39	12 HEMENWAY A3pt FG , jump shot missed			
12:37				13 JOHNSON D defensive rebound (4)
12:34		42-27	15	24 SUTTON D 2pt FG fast break in the paint, layup made (12)
12:34				13 JOHNSON D assist (4)
12:07	5 TYSON H foul drawn (1)			24 SUTTON D foul personal (3 - 4)
11:50	Timeout media			
11:46	turnover shot clock (5)			
11:31		42-29	13	13 JOHNSON D 2pt FG in the paint, layup made (2)
11:07	0 TRAPP C 3pt FG , jump shot missed			
11:05				23 ENOCH S defensive rebound (5)
11:02		42-31	11	23 ENOCH S 2pt FG in the paint, layup made (3)
10:38	25 SIMMS A2pt FG in the paint, jump shot missed			
10:34	15 NEWMAN III J offensive rebound (6)			
10:34	15 NEWMAN III J 2pt FG in the paint, layup made (15)	44-31	13	
10:15				30 MCMAHON R 3pt FG , jump shot missed
10:13				24 SUTTON D offensive rebound (7)
10:09	5 TYSON H foul shooting (2 - 7)			24 SUTTON D foul drawn (2)
10:09				24 SUTTON D free throw 1 - 2 missed
10:09				offensive dead ball rebound (2)
10:09		44-32	12	24 SUTTON D free throw 2 - 2 made (13)
09:51	25 SIMMS A turnover lost ball (2)			30 MCMAHON R steal (2)
09:48		44-34	10	24 SUTTON D 2pt FG in the paint, layup made (15)
09:21	13 MACK T 2pt FG outside the paint, jump shot made (14)	46-34	12	
08:59				24 SUTTON D 2pt FG in the paint, layup missed
08:57	defensive rebound (27)			
08:40	25 SIMMS A3pt FG , jump shot made (9)	49-34	15	
08:40	12 HEMENWAY Aassist (1)			
08:24				33 NWORAJ 3pt FG , jump shot missed
08:19	13 MACK T defensive rebound (3)			
08:19	12 HEMENWAY A foul drawn (1)			23 ENOCH S foul personal (2 - 5)
08:09	15 NEWMAN III J 3pt FG , jump shot made (18)	52-34	18	
07:54		52-36	16	5 WILLIAMS M2pt FG in the paint, layup made (7)
07:54				13 JOHNSON D assist (5)
07:33	25 SIMMS A2pt FG in the paint, layup missed			
07:29				33 NWORAJ defensive rebound (6)
07:16				2 PERRY D 3pt FG , jump shot missed
07:14	13 MACK T defensive rebound (4)			
06:55	12 HEMENWAY A3pt FG , jump shot made (5)	55-36	19	
06:55	25 SIMMS Aassist (3)			
06:47				Timeout 30 Sec
06:37		55-39	16	30 MCMAHON R 3pt FG , jump shot made (3)
06:37				13 JOHNSON D assist (6)
06:04	15 NEWMAN III J 3pt FG , jump shot missed			
06:01				5 WILLIAMS M defensive rebound (3)
05:51				13 JOHNSON D 3pt FG , jump shot missed
05:49				5 WILLIAMS M offensive rebound (4)
05:45	15 NEWMAN III J foul shooting (1 - 8)			24 SUTTON D foul drawn (3)





Official Basketball Play by Play - Second Half
Louisville at Clemson
 02/15/20 Littlejohn Coliseum, Clemson
 2019-20 Men's Basketball

Game Time: 4:00 PM
 Game Duration: 2:02
 Attendance: 9,146

Officials: Ted Valentine, Tony Henderson, Mark Schnur

Game Time	CLE	Score	Diff	LOU
05:45				24 SUTTON D free throw 1 - 2 missed
05:45				offensive dead ball rebound (3)
05:45		55-40	15	24 SUTTON D free throw 2 - 2 made (16)
05:23	13 MACK T turnover lost ball (1)			
05:06				13 JOHNSON D 2pt FG in the paint, layup missed
05:06				offensive rebound (33)
05:03		55-42	13	24 SUTTON D 2pt FG in the paint, layup made (18)
05:03				13 JOHNSON D assist (7)
04:48	12 HEMENWAY A 3pt FG , jump shot made (8)	58-42	16	
04:48	25 SIMMS A assist (4)			
04:32				2 PERRY D 2pt FG in the paint, layup missed
04:28				2 PERRY D offensive rebound (3)
04:22				30 MCMAHON R 3pt FG , jump shot missed
04:20	0 TRAPP C defensive rebound (8)			
04:05	15 NEWMAN III J 2pt FG in the paint, layup made (20)	60-42	18	
04:05	15 NEWMAN III J foul drawn (5)			24 SUTTON D foul shooting (4 - 6)
04:05	15 NEWMAN III J free throw 1 - 1 made (21)	61-42	19	
03:58		61-45	16	30 MCMAHON R 3pt FG , jump shot made (6)
03:58				33 NWORAJ assist (1)
03:56				Timeout 30 Sec
03:31	12 HEMENWAY A 3pt FG , jump shot blocked			
03:31				30 MCMAHON R block (1)
03:27				33 NWORAJ defensive rebound (7)
03:29	12 HEMENWAY A foul personal (1 - 9)			33 NWORAJ foul drawn (2)
03:29		61-46	15	33 NWORAJ 1&1 free throw 1 made (1)
03:29		61-47	14	33 NWORAJ 1&1 free throw 2 made (2)
03:18	0 TRAPP C foul drawn (3)			13 JOHNSON D foul personal (1 - 7)
03:18	0 TRAPP C 1&1 free throw 1 missed			
03:14				13 JOHNSON D defensive rebound (5)
03:09				5 WILLIAMS M 2pt FG in the paint, layup blocked
03:09	0 TRAPP C block (1)			
03:05	12 HEMENWAY A defensive rebound (1)			
02:53	25 SIMMS A foul drawn (2)			5 WILLIAMS M foul personal (2 - 8)
02:53	25 SIMMS A 1&1 free throw 1 made (10)	62-47	15	
02:53	25 SIMMS A 1&1 free throw 2 made (11)	63-47	16	
02:44		63-49	14	13 JOHNSON D 2pt FG outside the paint, jump shot made (4)
02:34	25 SIMMS A foul drawn (3)			13 JOHNSON D foul personal (2 - 9)
02:34	25 SIMMS A 1&1 free throw 1 missed			
02:30				33 NWORAJ defensive rebound (8)
02:26		63-51	12	13 JOHNSON D 2pt FG in the paint, layup made (6)
02:24				Timeout 60 Sec
02:21	0 TRAPP C foul drawn (4)			0 KIMBLE L foul personal (1 - 10)
02:21	0 TRAPP C free throw 1 - 2 missed			
02:21	offensive dead ball rebound (1)			
02:21	0 TRAPP C free throw 2 - 2 made (8)	64-51	13	
02:14				30 MCMAHON R 3pt FG , jump shot missed
02:11	25 SIMMS A defensive rebound (4)			
02:08	25 SIMMS A foul drawn (4)			33 NWORAJ foul personal (3 - 11)
02:08	25 SIMMS A free throw 1 - 2 missed			
02:08	offensive dead ball rebound (2)			





Official Basketball Play by Play - Second Half
Louisville at Clemson
 02/15/20 Littlejohn Coliseum, Clemson
 2019-20 Men's Basketball

Game Time: 4:00 PM
 Game Duration: 2:02
 Attendance: 9,146

Officials: Ted Valentine, Tony Henderson, Mark Schnur

Game Time	CLE	Score	Diff	LOU
02:08	25 SIMMS A free throw 2 - 2 made (12)	65-51	14	
02:02	0 TRAPP C foul personal (3 - 10)			13 JOHNSON D foul drawn (1)
02:02		65-52	13	13 JOHNSON D free throw 1 - 2 made (7)
02:02		65-53	12	13 JOHNSON D free throw 2 - 2 made (8)
02:01	2 DAWES A foul drawn (1)			30 MCMAHON R foul personal (2 - 12)
02:01	2 DAWES A free throw 1 - 2 made (1)	66-53	13	
02:01	2 DAWES A free throw 2 - 2 made (2)	67-53	14	
01:52		67-56	11	33 NWORAJ 3pt FG , jump shot made (5)
01:52				13 JOHNSON D assist (8)
01:48	2 DAWES A foul drawn (2)			33 NWORAJ foul personal (4 - 13)
01:48	2 DAWES A free throw 1 - 2 made (3)	68-56	12	
01:48	2 DAWES A free throw 2 - 2 made (4)	69-56	13	
01:42				5 WILLIAMS M2pt FG in the paint, layup blocked
01:42	15 NEWMAN III J block (1)			
01:38				13 JOHNSON D offensive rebound (6)
01:38		69-58	11	13 JOHNSON D 2pt FG in the paint, dunk, made (10)
01:36	0 TRAPP C foul drawn (5)			0 KIMBLE L foul personal (2 - 14)
01:36	0 TRAPP C free throw 1 - 2 made (9)	70-58	12	
01:36	0 TRAPP C free throw 2 - 2 made (10)	71-58	13	
01:31		71-60	11	13 JOHNSON D 2pt FG in the paint, layup made (12)
01:24	15 NEWMAN III J 2pt FG fast break in the paint, dunk, made (23)	73-60	13	
01:24	25 SIMMS A assist (5)			
01:24	Timeout 30 Sec			
01:14		73-62	11	5 WILLIAMS M2pt FG in the paint, layup made (9)
01:11	25 SIMMS A foul drawn (5)			0 KIMBLE L foul personal (3 - 15)
01:11	25 SIMMS A free throw 1 - 2 made (13)	74-62	12	
01:10	25 SIMMS A free throw 2 - 2 missed			
01:08				33 NWORAJ defensive rebound (9)
01:08				33 NWORAJ turnover lost ball (4)
00:48	2 DAWES A 3pt FG , jump shot made (7)	77-62	15	
00:48	25 SIMMS A assist (6)			
00:41				13 JOHNSON D 2pt FG in the paint, layup missed
00:36	13 MACK T defensive rebound (5)			
00:10	turnover shot clock (8)			
00:06				13 JOHNSON D 3pt FG , jump shot missed
00:00	0 TRAPP C defensive rebound (9)			
END OF GAME				
CLE 77-62 LOU				





Louisville at Clemson

02/15/20 Littlejohn Coliseum, Clemson
2019-20 Men's Basketball

Officials: Ted Valentine, Tony Henderson, Mark Schnur

Louisville - 48

NO.	Name	Min	FG			Rebounds			Fouls		TP	AS	TO	ST	Blocks		+/-
			M-A	3P	M-A	M-A	OR	DR	TOT	PF					FD	BS	
10	Samuell Williamson	F 00:00															
24	Dwayne Sutton	F 16:23	4-8	0-0	2-4	1	0	1	4	2	10	0	0	0	0	0	8
23	Steven Enoch	C 03:48	1-1	0-0	0-0	0	1	1	1	0	2	0	0	0	0	0	0
0	Lamarr Kimble	G 06:53	1-1	0-0	0-0	0	0	0	3	1	2	0	1	0	0	0	-5
2	Darius Perry	G 07:54	1-5	0-2	0-0	1	1	2	0	1	2	0	0	0	0	0	-5
33	Jordan Nwora	17:17	1-2	1-2	2-2	2	6	8	2	2	5	1	1	0	0	0	1
30	Ryan McMahon	16:21	2-5	2-5	0-0	0	0	0	2	0	6	0	0	1	1	0	4
13	David Johnson	15:12	5-9	0-2	2-2	1	2	3	2	1	12	7	0	0	0	0	5
5	Malik Williams	16:12	4-6	0-0	1-2	1	1	2	1	3	9	0	0	0	0	2	2
Team						1	1	2			0		0				
Totals			19-37	3-11	7-10	7	12	19	15	10	48	8	2	1	1	2	2

Shooting By Period		
2 nd FG%	19-37	51.4%
3PT%	3-11	27.3%
FT%	7-10	70%
GM FG%	19-37	51.4%
3PT%	3-11	27.3%
FT%	7-10	70.0%

Dead Ball Rebounds: 2, 0

Technical Fouls: NONE

Clemson - 46

NO.	Name	Min	FG			Rebounds			Fouls		TP	AS	TO	ST	Blocks		+/-
			M-A	3P	M-A	M-A	OR	DR	TOT	PF					FD	BS	
25	Aamir Simms	F 14:35	2-4	1-1	4-7	0	1	1	2	4	9	4	1	0	0	0	0
0	Clyde Trapp	G 15:36	1-3	1-3	3-5	0	5	5	3	5	6	0	0	0	1	0	-5
2	Al-Amir Dawes	G 14:12	1-3	1-3	4-4	0	0	0	0	2	7	0	0	0	0	0	3
13	Tevin Mack	G 17:04	2-2	0-0	0-0	0	3	3	1	0	4	1	1	0	0	0	2
15	John Newman III	G 20:00	4-6	1-2	3-3	1	1	2	1	2	12	0	0	0	1	0	-2
55	Trey Jemison	05:25	1-1	0-0	0-0	0	0	0	1	0	2	0	1	0	0	0	-2
5	Hunter Tyson	02:56	0-0	0-0	0-0	0	0	0	1	1	0	0	0	0	0	0	-4
12	Alex Hemenway	10:12	2-4	2-4	0-0	0	1	1	1	1	6	1	0	0	0	1	-2
Team						0	1	1			0		2				
Totals			13-23	6-13	14-19	1	12	13	10	15	46	6	5	0	2	1	-2

Shooting By Period		
2 nd FG%	13-23	56.5%
3PT%	6-13	46.2%
FT%	14-19	73.7%
GM FG%	13-23	56.5%
3PT%	6-13	46.2%
FT%	14-19	73.7%

Dead Ball Rebounds: 2, 0

Technical Fouls: NONE

	LOU	CLE
Biggest lead	0 (1 st 20:00)	21 (2 nd 14:50)
Best Scoring Run	10 (2 nd 11:02)	8 (2 nd 8:09)
Lead Changes	0	
Times Tied	0	
Time with Lead	00:00	19:46

Points from	LOU	CLE
Turnovers	6	5
Paint	30	10
Second Chance	6	2
Fast Breaks	4	2
Bench	32	8

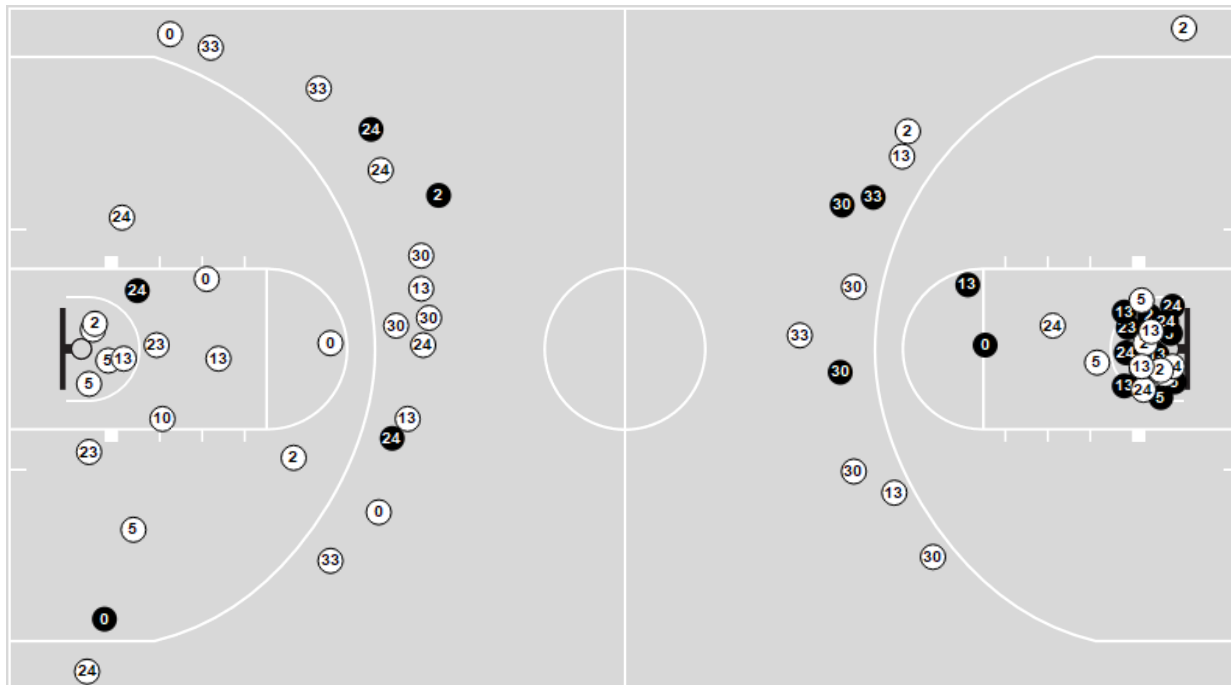
Period by Period Scoring		
	2 nd	TOT
LOU	48	48
CLE	46	46



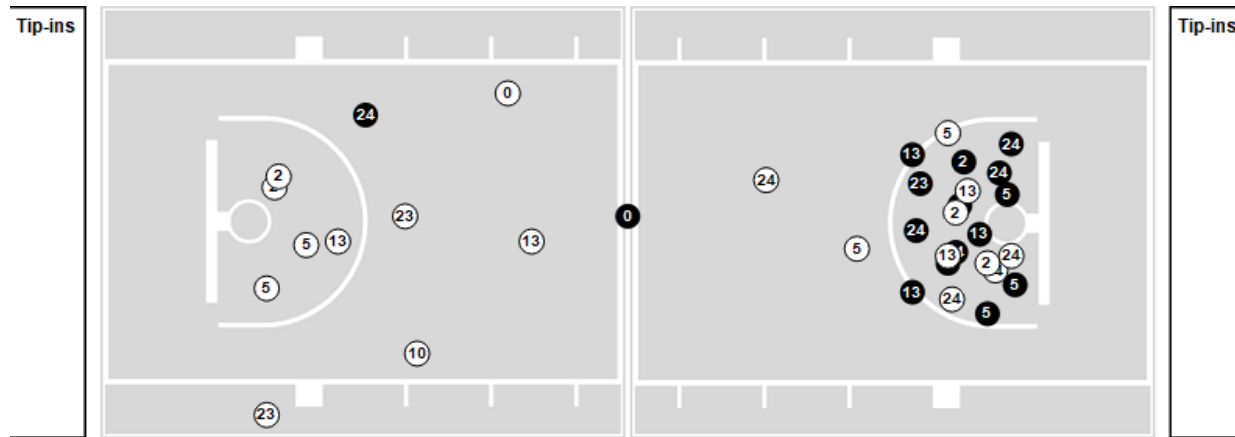
Players => All FG Types => All ; Results => All ;

Louisville

All Field Goals



Shots in the Paint



● Made ○ Missed N - Player Number

Louisville	MA	%
Field Goals	24/69	35
2 Points	18/42	43
3 Points	6/27	22
Free Throws	8/12	67

Louisville	MA	%
Points in the Paint	32 (16 / 35)	46
Fast Break Points	4 (3/3)	100
Second Chance Points	10 (6/16)	38
Effective FG%	39	

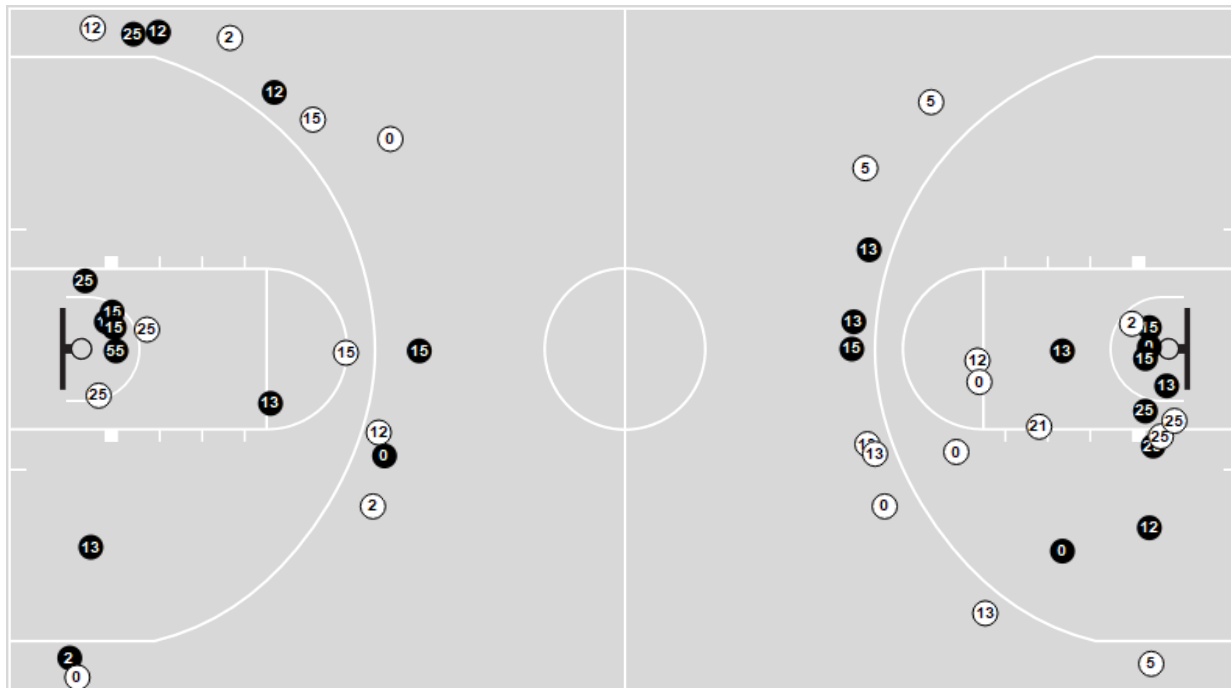


Officials: Ted Valentine, Tony Henderson, Mark Schnur

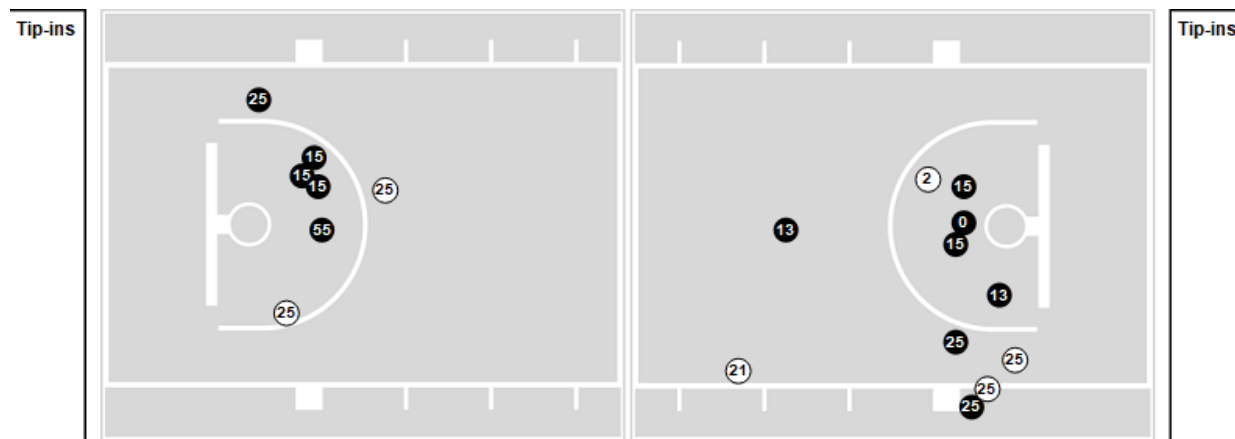
Players => All FG Types => All ; Results => All ;

Clemson

All Field Goals



Shots in the Paint



N Made **(N)** Missed **N** - Player Number

Clemson	M/A	%
Field Goals	25/49	51
2 Points	16/26	62
3 Points	9/23	39
Free Throws	18/23	78

Clemson	M/A	%
Points in the Paint	22 (11 / 16)	69
Fast Break Points	10 (7/7)	100
Second Chance Points	4 (2/2)	100
Effective FG%	60	

